

TULIP COTTAGE

Melissa MORTENSON



AVAILABLE FEBRUARY 2024 | R-3
LAST CALL - SEPTEMBER 1, 2023



White Main



Green Flower Fields



Grass Cows and Bunnies



White Vines



Green Flower Dots



White Tulip Stripes



Pink Flower Toss



Rose Stitches



Redwood Sparkler



Raspberry Sparkler



Celery Sparkler



Riley Green Sparkler



C14260-NAVY



Navy Main



C14261-SKY



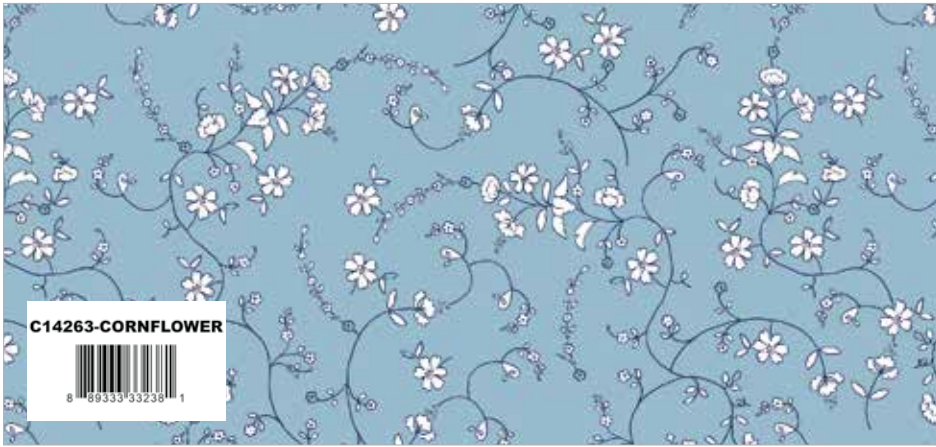
Sky Flower Fields



C14262-SKY



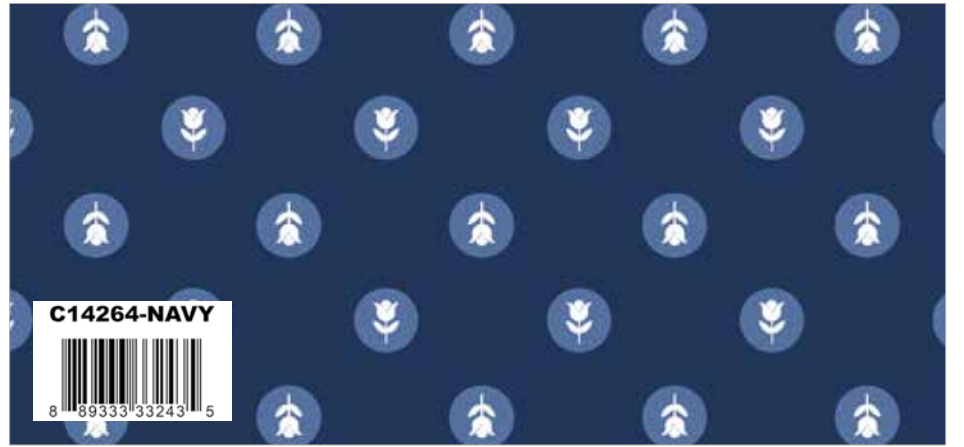
Sky Cows and Bunnies



C14263-CORNFLOWER



Cornflower Vines



C14264-NAVY



Navy Flower Dots



C14265-BLUE



Blue Tulip Stripes



C14266-SKY



Sky Flower Toss



C14267-NAVY



Navy Stitches



SC650-NAVY



Navy Sparkler



SC650-DKDENIM



Dark Denim Sparkler



SC650-LAKEBLUE



Lake Blue Sparkler



SC650-BOYBLUE



Boy Blue Sparkler



C14260-PINK



Pink Main



C14261-PINK



Pink Flower Fields



C14262-PINK



Pink Cows and Bunnies



C14263-PINK



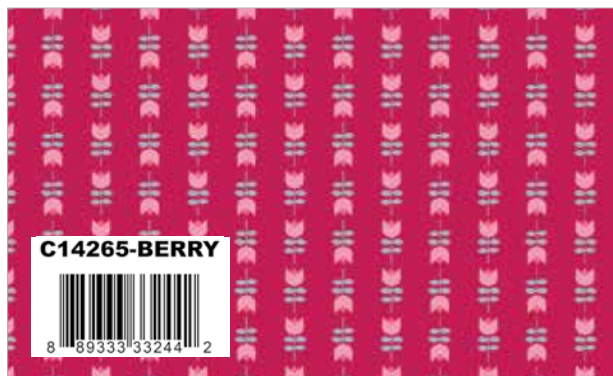
Pink Vines



C14264-HOT PINK



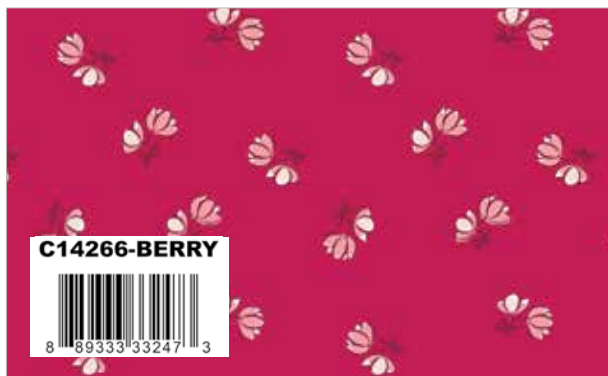
Hot Pink Flower Dots



C14265-BERRY



Berry Tulip Stripes



C14266-BERRY



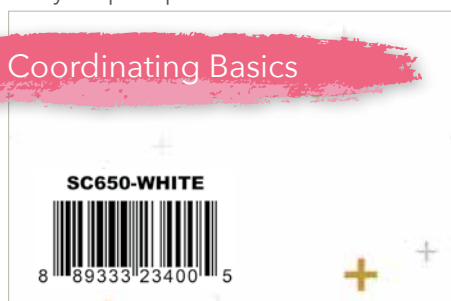
Berry Flower Toss



C14267-GREEN



Green Stitches



SC650-WHITE



White Sparkler



SC650-CLOVER



Clover Sparkler



SC650-BEEHIVE



Beehive Sparkler



SC650-BABYPINK



Baby Pink Sparkler

Breezy Bunting Quilt by Melissa Mortenson



Rolie Polie
Friendly

Fabric Requirements

- (1) RP-14260-40 Tulip Cottage Rolie Polie
- 3/4 Yard C14265 Blue Tulip Stripes (Binding)
- 1/4 Yard C14266 Sky Flower Toss
- 2 1/2 Yards SC650 White Sparkler
- Backing: 1 3/4 Yards *WB640 Navy Dapple Dot



Pre-order the
P115-BREEZYBUNTING
Quilt Pattern



Quilt Size 56" x 84"

*Wide Back measurement is shown using the best use of fabric and may not be intended for directional Wide Back fabric.

Potholder Parade by Melissa Mortenson



Fabric Requirements

- (1) SHD14268 Tulip Cottage Home Dec Panel

Oh Happy Day Pot Holder:

- 1/4 Yard C14262 Pink Cows and Bunnies
- 1/4 Yard C14261 Sky Flower Fields
- 1/4 Yard C14267 Green Stitches

Be Happy Pot Holder:

- 1/4 Yard C14264 Green Flower Dots
- 1/4 Yard C14265 Blue Tulip Stripes
- 1/4 Yard C14260 White Main



Pre-order the
P115-POTHOLDERPARADE
Quilt Pattern



* **Approximate** fabric requirements are listed to aid in estimating the amount of yardage to order and are subject to change. The projects portrayed are virtual images. The look of the projects may differ when using actual fabric. The quilt virtual shown on this page may be different than the image shown on the pattern cover.

Gathered Precuts and Tailored Tulip Quilts by Melissa Mortenson



Quilt Size 47½" x 67½"

10" Stacker
Friendly

Fabric Requirements

- (1) SHD14268 Tulip Cottage Home Dec Panel
- (1) 10-14260-42 Tulip Cottage 10-Inch Stacker
- 1/2 Yard C14267 Navy Stitches (Binding)
- Backing: 1 1/2 Yards *WB605 Nighttime Shabby

Free Pattern download will be available at:
www.polkadotchair.com/tulip-cottage

*Wide Back measurement is shown using the best use of fabric and may not be intended for directional Wide Back fabric.



Quilt Size 58" x 74"

10" Stacker
Friendly

Fabric Requirements

- (1) 10-14260-42 Tulip Cottage 10-Inch Stacker
- 3 3/4 Yards SC650 Dark Denim or Beach Sparkler
- 1/2 Yard C14267 Green Stitches
- 1/2 Yard C14267 Navy Stitches (Binding)
- Backing: 1 3/4 Yards *WB6422 Aqua Bee Backings Plaid



Pre-order the
P115-TAILOREDTULIPS
Quilt Pattern

*Wide Back measurement is shown using the best use of fabric and may not be intended for directional Wide Back fabric.

Reading Pillow by Melissa Mortenson



Fabric Requirements

- (1) SHD14268 Tulip Cottage Home Dec Panel (Pocket)
- 1/2 Yard C14261 Sky Flower Fields (Pillow front and back)
- 1/2 Yard C14263 Cornflower Vines
(Pocket lining and sides of pocket front piece)
- (1) Package Pre-made Piping (Optional)

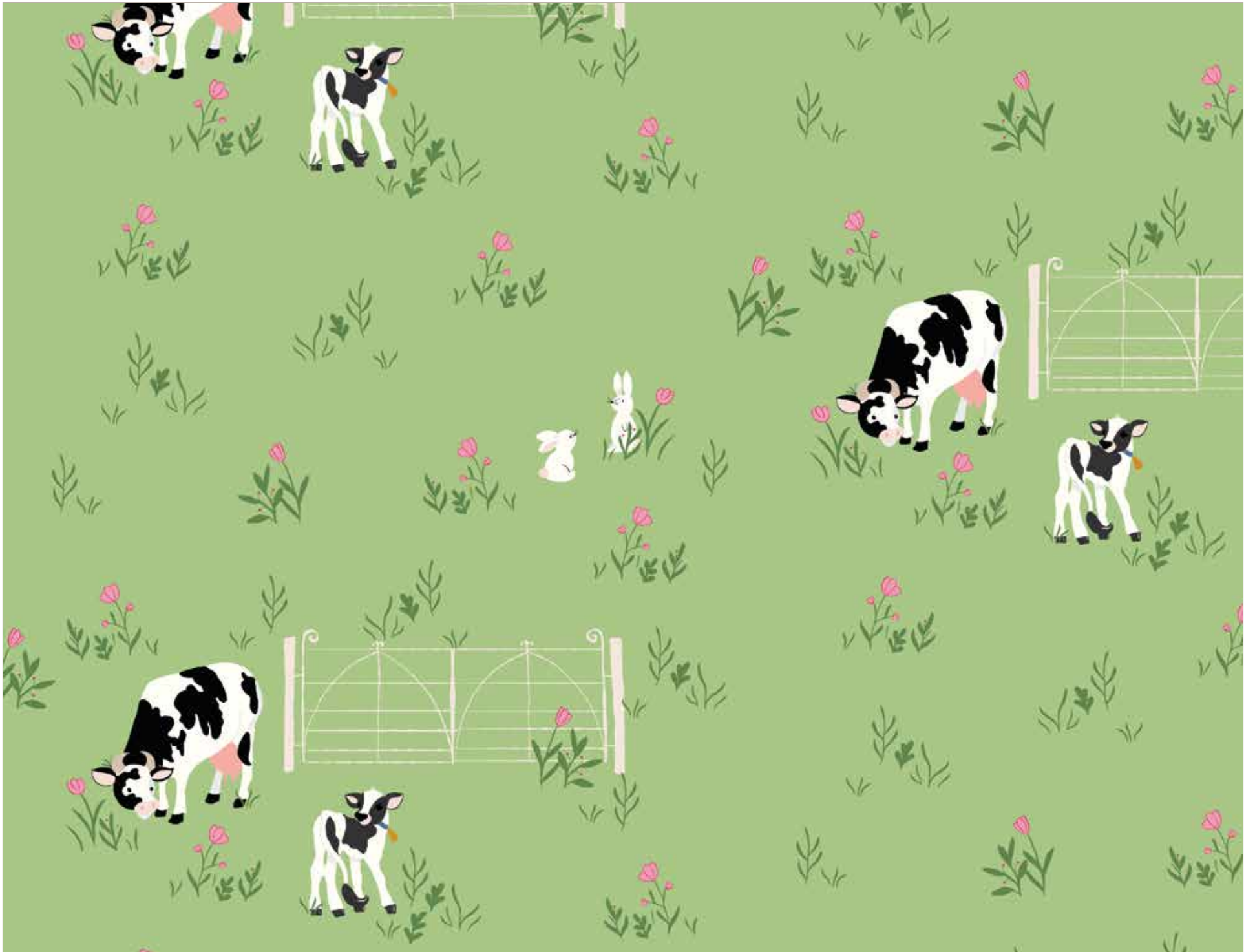
Pre-order the
P115-READING
Quilt Pattern



* **Approximate** fabric requirements are listed to aid in estimating the amount of yardage to order and are subject to change.
The projects portrayed are virtual images. The look of the projects may differ when using actual fabric.
The quilt virtual shown on this page may be different than the image shown on the pattern cover.



C14261 Pink Flower Fields



C14262 Grass Cows and Bunnies



C14260 White Main

Shown as Repeat 44" x 36"



About the Line

My husband used to live in the Netherlands, and we've been lucky enough to visit several times in recent years. On our last trip, we were riding the train thru the Dutch countryside when I looked out the window and saw the most idyllic farm. A bright white farmhouse with green shutters and roof and a speckling of black and white cows grazing in the pasture.

With that beautiful farm in my mind, I began sketching this fabric collection. Along with the farm, I drew inspiration from our collection of antique Delft tiles and, of course, the famous Dutch Tulip fields. I also threw in a few personal touches, such as my husband's vintage Land Rover, our family dog, and cows from my in-law's farm here in Kentucky.

Melissa Mortenson
@polkadotchair

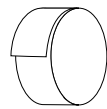
Precuts



FFYD-14260



Flat Fold Bundle
25 Yards



RP-14260-40



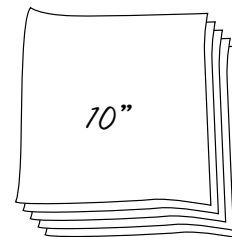
Rolie Polie
40 Pieces



5-14260-42



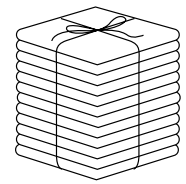
5-Inch Stacker
42 Pieces



10-14260-42



10-Inch Stacker
42 Pieces



FQ-14260-24



Fat Quarter Bundle
24 Pieces

Pre-Order Only

ADD ANY LAMINATE WITH 100 YARDS MINIMUM PANEL IS INCLUDED IN CASE PACKS



1YD-14260N-8



Navy - 1-Yard Bundle
8 Pieces



1YD-14260P-8



Pink - 1-Yard Bundle
8 Pieces



1YD-14260W-8



White - 1-Yard Bundle
8 Pieces

CP10-14260-25



10-Yard Case Pack

CP15-14260-25



15-Yard Case Pack

Available February 2024 Last Call September 1, 2023

100% FINE COTTON 43/44" WIDE • MACHINE WASH COLD • NO CHLORINE BLEACH • TUMBLE DRY LOW • REMOVE PROMPTLY

RILEY BLAKE DESIGNS • 9646 SOUTH 500 WEST, SANDY, UTAH 84070 • TOLL FREE 1.888.768.8454 • TEL 801.816.0540 • WWW.RILEYBLAKEDESIGNS.COM

NOT INTENDED FOR CHILDREN'S SLEEPWEAR

©2023 RILEY BLAKE DESIGNS AND MELISSA MORTENSON

MADE IN KOREA