

DAYBREAK ON THE PRAIRIE
COTTAGE CORE APRON ROSE


Riley Blake
DESIGNS®



32" x 37"

Daybreak on the Prairie
by Modern Prairie

 = Intermediate

03/01/2026

DAYBREAK ON THE PRAIRIE COTTAGE CORE APRON ROSE

FINISHED APRON SIZE 32" x 37"

Please read all instructions before beginning this project.

Panel designed by Modern Prairie.

GENERAL INSTRUCTIONS

Please check www.rileyblakedesigns.com/pattern-updates or scan the QR Code for any updates before starting this project.

This pattern requires a basic knowledge of sewing techniques and terminology. The diagrams portrayed are virtual images. The layout and look of your project may differ when using actual fabric. It is not recommended to prewash fabric before cutting and assembling.



RSO = Right Sides Out

RST = Right Sides Together

FABRIC REQUIREMENTS

Fabric is from the Daybreak on the Prairie collection.

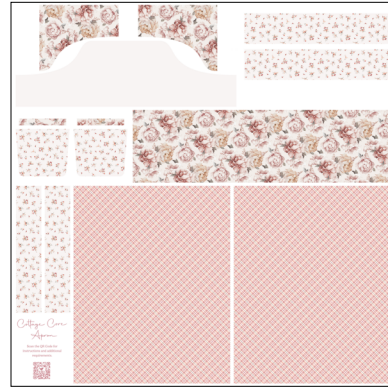
(1) PD17690-ROSE Daybreak Cottage Core Apron Panel

OTHER SUPPLIES

Basic Sewing Supplies

CUTTING INSTRUCTIONS

When cutting fabric, use a straight edge ruler and rotary cutter to cut pieces with straight edges, and scissors to cut the other pieces. Measurements include $\frac{1}{4}$ " seam allowance. Label, allocate, and organize all cuts as noted.



Rose Daybreak Cottage Core Apron Panel

Carefully cut out each of the panel pieces along the printed motifs and organize as follows (listed in order as shown on the panel from left to right and top to bottom):

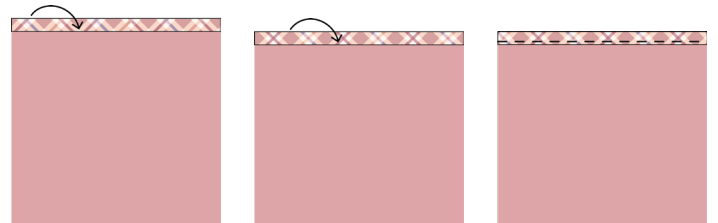
- (2) Apron Bodice pieces
- (1) Apron Bodice Lining piece
- (2) Neck Strap pieces
- (2) Pocket Accent pieces
- (2) Pocket pieces
- (1) Apron Center piece
- (2) Waist Strap pieces
- (2) Apron Side pieces

SEWING TECHNIQUES

Sew all seams RST and with a $\frac{1}{4}$ " seam allowance unless stated otherwise. Refer to the diagrams for placement of the fabrics. Press seams as desired unless stated otherwise. Please refer to the following general sewing technique as this method is referenced throughout the pattern.

HEMMING METHOD

Fold (1) edge of the fabric under $\frac{1}{4}$ " with wrong sides together. Press. Fold the same edge under $\frac{1}{4}$ " again to enclose the raw edge within the fold. Press. Topstitch along the open edge to complete the hem.



DAYBREAK ON THE PRAIRIE COTTAGE CORE APRON ROSE

PREPARE STRAPS AND POCKETS

1. Fold (1) Neck Strap piece in half lengthwise with RST. Sew along the long edge and one short edge, backstitching at the beginning and end. Turn the unit RSO and press. Repeat to make a second Neck Strap.



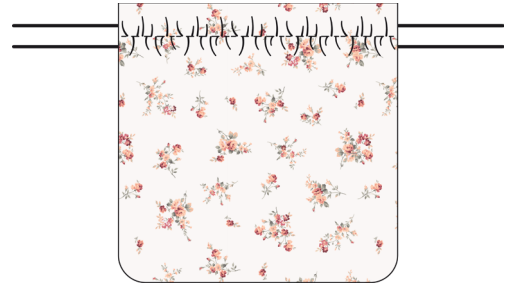
2. Fold (1) Waist Strap piece in half lengthwise with RST. Sew along the long edge and one short edge, backstitching at the beginning and end. Turn the unit RSO and press. Repeat to make a second Waist Strap.



3. Using a basting stitch or long stitch length on your sewing machine, sew (2) rows of stitches along the top straight edge of (1) Pocket piece approximately $\frac{1}{4}$ " from the top edge and $\frac{1}{8}$ " apart. Start and stop the stitches $\frac{1}{2}$ " from the sides and leave long thread tails at the start and end of each stitching line.



4. Pull the bobbin thread tails to form gathers in the fabric. The top edge should measure 7" wide (or the same size as the Pocket Accent piece). Even out the gathers as needed and tie knots in the thread ends close to the fabric to prevent the gathers from coming undone. Trim excess thread.



5. Sew (1) Pocket Accent piece to the top edge of the Pocket piece as shown below. Remove any visible basting stitches.



6. Use the hemming method to hem each edge of the Step 5 unit to make (1) Pocket.

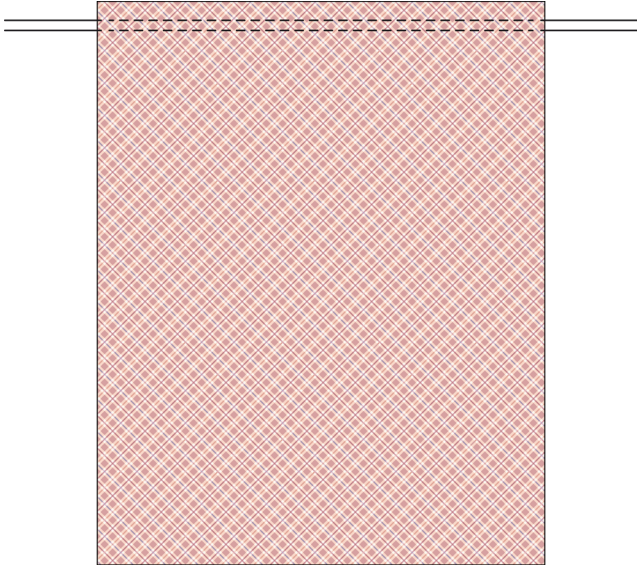


7. Repeat steps 3-6 to make a second Pocket.

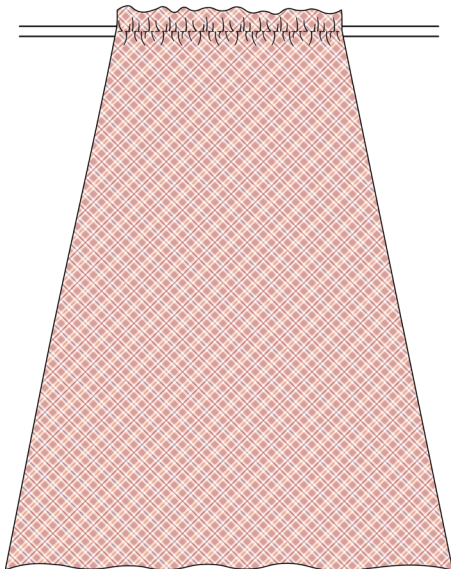
DAYBREAK ON THE PRAIRIE COTTAGE CORE APRON ROSE

ASSEMBLE AND FINISH THE APRON

- Using a basting stitch or long stitch length on your sewing machine, sew (2) rows of stitches along the top short edge of (1) Apron Side piece approximately $\frac{1}{4}$ " from the top edge and $\frac{1}{8}$ " apart. Start and stop the stitches $\frac{1}{2}$ " from the sides and leave long thread tails at the start and end of each stitching line.

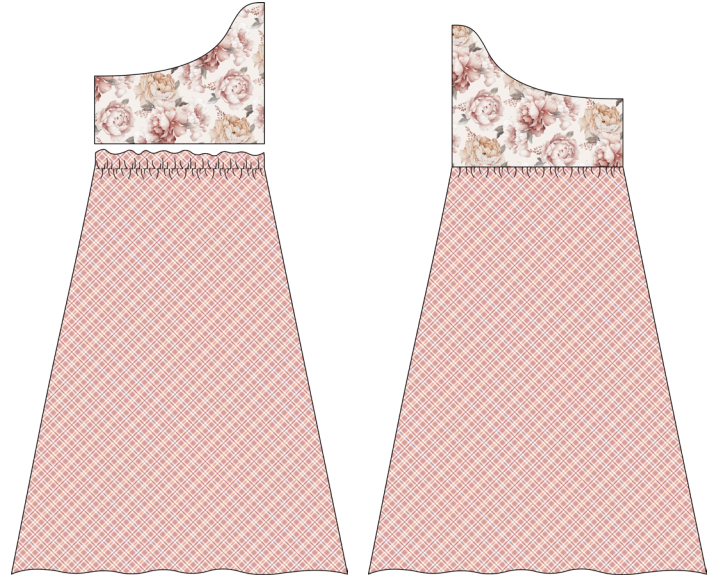


- Pull the bobbin thread tails to form gathers in the fabric. The top edge should measure $11 \frac{3}{4}$ " wide (or the same size as the Apron Bodice piece). Even out the gathers as needed and tie knots in the thread ends close to the fabric to prevent the gathers from coming undone. Trim excess thread.



- Repeat steps 8-9 to make a second ruffled Apron Side piece.

- Sew (1) Apron Bodice piece to the top edge of (1) Apron Side piece as shown below to make (1) Left Side Unit. Repeat to make (1) Right Side Unit. Remove any visible basting stitches. Optional: Zigzag or serge the exposed seams.



- Sew (1) Left Side Unit, (1) Apron Center piece, and (1) Right Side Unit together as shown below to make (1) Apron Unit. Optional: Zigzag or serge the exposed seams.



DAYBREAK ON THE PRAIRIE COTTAGE CORE APRON ROSE

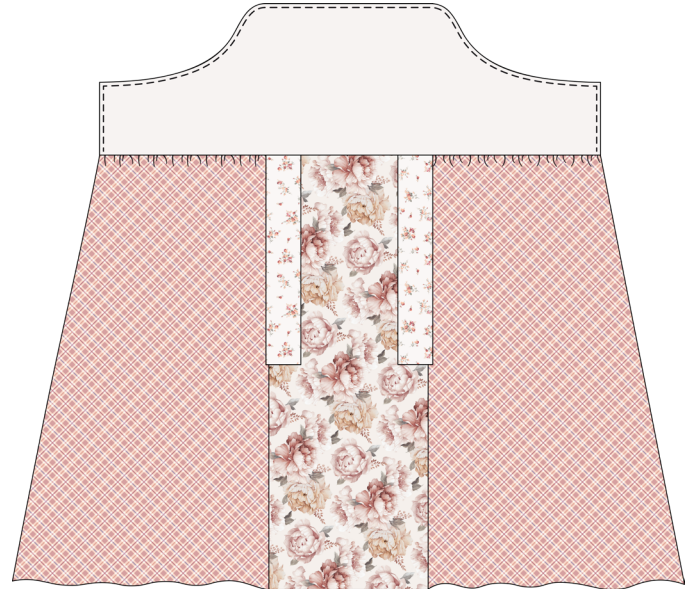
13. Use the hemming method to hem each side and bottom edge of the Apron Unit.



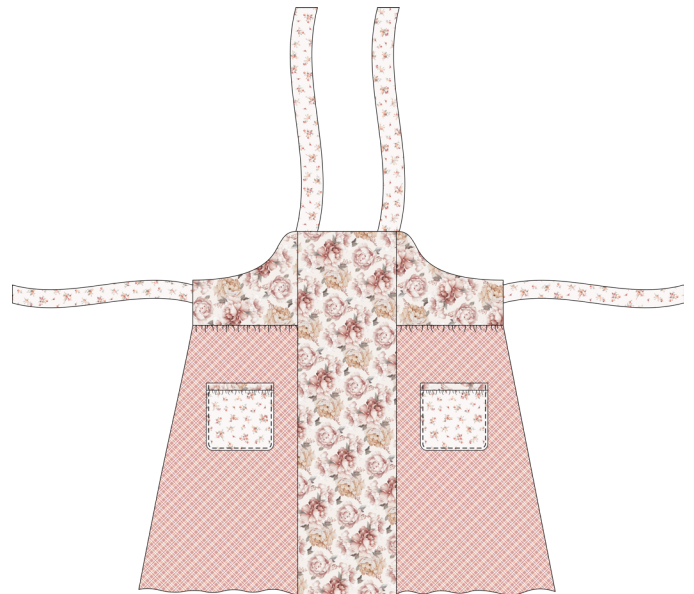
14. Position (1) Neck Strap along the top edge 1" from the left side with raw edges aligned as shown below. Repeat to add (1) Neck Strap along the top edge 1" from the right side. Baste along the raw edges using an $\frac{1}{8}$ " seam to secure the Neck Straps.
15. Position (1) Waist Strap along the left edge $\frac{1}{2}$ " from the top with raw edges aligned. Repeat to add (1) Waist Strap along the right edge $\frac{1}{2}$ " from the top. Baste along the raw edges using an $\frac{1}{8}$ " seam to secure the Waist Straps.



16. Use the hemming method to hem the bottom edge of (1) Apron Bodice Lining or cut the bottom edge with pinking shears to avoid fraying. Position (1) Apron Bodice Lining RST along the top of the Apron Unit as shown below. Sew along the side and top edges, backstitching at the beginning and end, making sure not to catch the loose ends of the Neck and Waist Straps inside the seams.



17. Turn (1) Apron Bodice RSO, flipping the Lining piece to the back of the Apron Unit. Press. Place (1) Pocket on each Apron Side piece, positioning the pockets 2 $\frac{1}{2}$ " away from the center section and 6" down from the bodice seam. Stitch along the sides and bottom of each pocket, backstitching at the beginning and end to complete the apron.



Enjoy and share your apron using the hashtags: [#daybreakontheprairiefabric](#), [#daybreakontheprairiecottagecoreapron](#), [#rileyblakedesigns](#), and [#iloverileyblake](#).