

# ROSE TEA COSY PANEL

  
**Riley Blake**  
DESIGNS®



approximately 10" x 10" (adjustable)



by Modern Prairie



# ROSE TEA COSY PANEL

**FINISHED TEA COSY SIZE** approximately 10" x 10" (adjustable)

Please read all instructions before beginning this project.

Panel designed by Modern Prairie.

## GENERAL INSTRUCTIONS

Please check [www.rileyblakedesigns.com/pattern-updates](http://www.rileyblakedesigns.com/pattern-updates) or scan the QR Code for any updates before starting this project.

This pattern requires a basic knowledge of sewing techniques and terminology. The diagrams portrayed are virtual images. The layout and look of your project may differ when using actual fabric. It is not recommended to prewash fabric before cutting and assembling.



RSO = Right Sides Out

RST = Right Sides Together

WST = Wrong Sides Together

## FABRIC REQUIREMENTS

Fabric is from the Daybreak on the Prairie collection.

(1) PD17691-ROSE Tea Cosy Panel

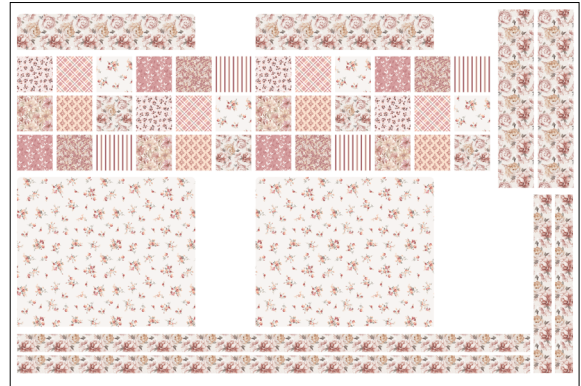
## OTHER SUPPLIES

Basic Sewing Supplies

Fusible Interfacing (optional)

## CUTTING INSTRUCTIONS

When cutting fabric, use a straight edge ruler and rotary cutter. Measurements include ¼" seam allowance. Label, allocate, and organize all cuts as noted.



### Rose Tea Cosy Panel

Carefully cut out each of the panel pieces along the printed motifs and organize as follows (listed in order as shown on the panel from left to right and top to bottom):

- (2) Cosy Top pieces
- (36) Cosy Body pieces
- (2) Cosy Bottom pieces
- (2) Cosy Lining pieces
- (2) Channel pieces (short)
- (2) Drawstring pieces (long)

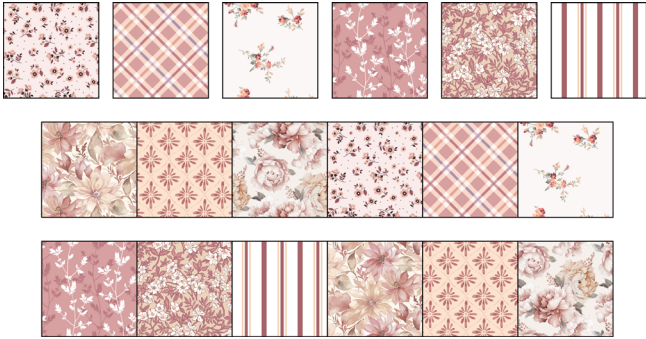
## SEWING TECHNIQUES

Sew all seams RST and with a ¼" seam allowance unless stated otherwise. Refer to the diagrams for placement of the fabrics. Press seams as desired unless stated otherwise.

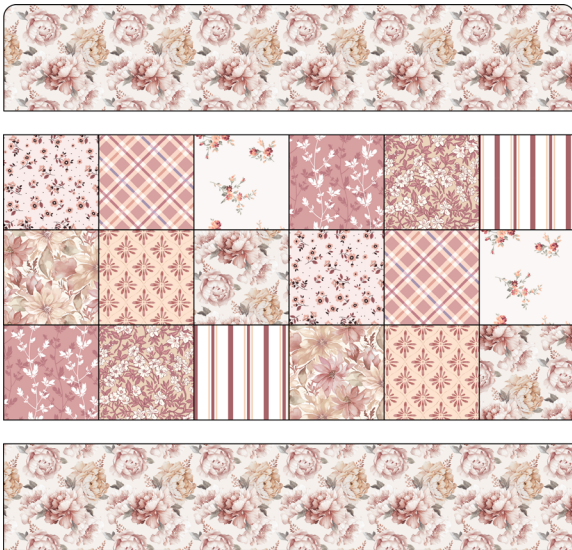
# ROSE TEA COSY PANEL

## ASSEMBLE THE TEA COSY

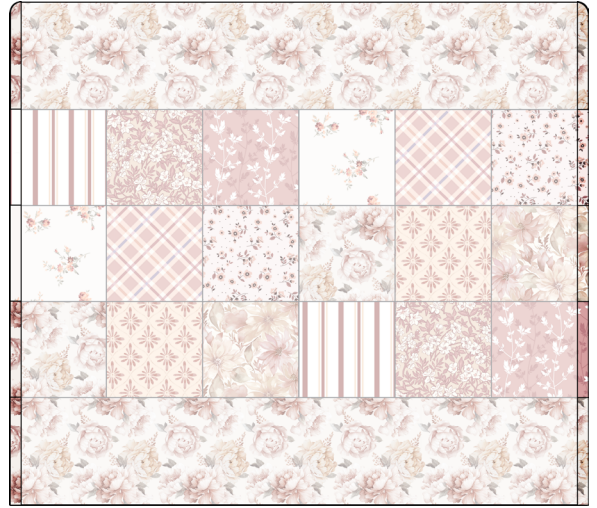
1. Arrange (18) Cosy Body pieces into (3) rows of (6) squares as shown below. Sew the pieces together into rows. Next, sew the rows together to make (1) Cosy Center piece.



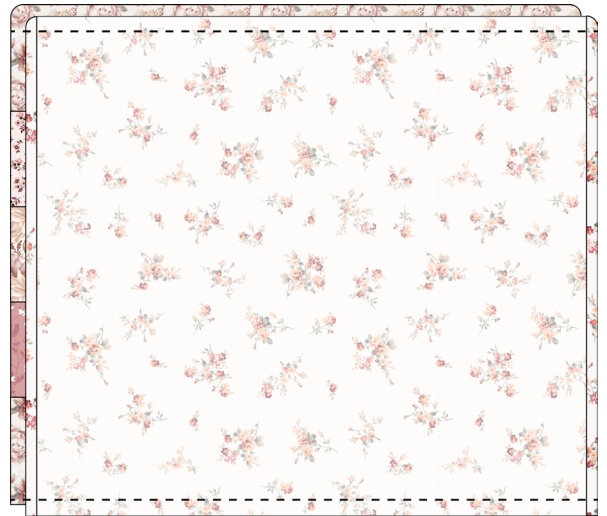
2. Sew (1) Cosy Top piece, (1) Cosy Center piece, and (1) Cosy Bottom piece together as shown below to make (1) Outer Cosy Unit.



3. Turn the side edges of (1) Outer Cosy Unit under  $\frac{1}{4}$ " with WST. Press. Repeat with (1) Cosy Lining piece.

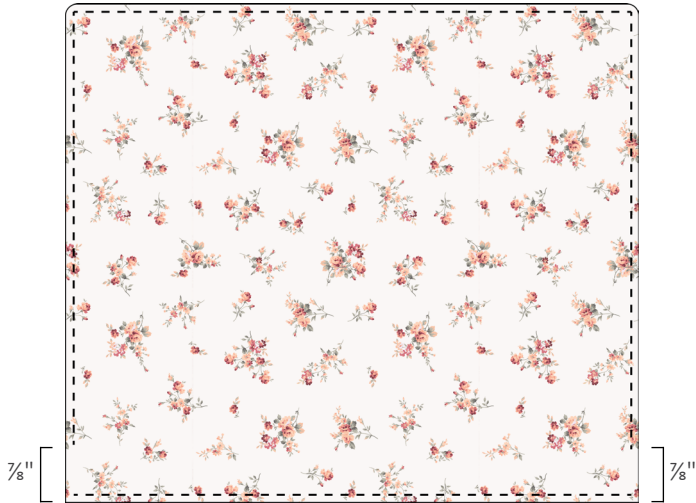


4. Layer (1) Cosy Lining piece on (1) Outer Cosy Unit with RST. Sew along the top and the bottom using a  $\frac{1}{4}$ " seam. Press seams open to make (1) Cosy Unit.

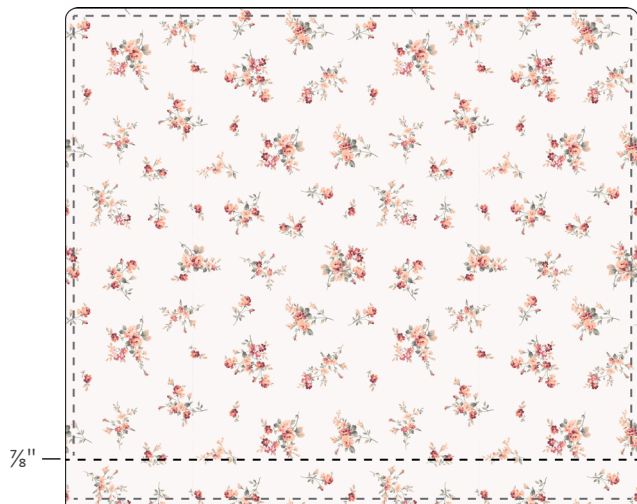


## ROSE TEA COSY PANEL

5. Turn (1) Cosy Unit RSO (the lining side is shown so stitching lines are easier to see). Topstitch  $\frac{7}{8}$ " around the unit, sewing the side edges closed in the process, and leaving a  $\frac{7}{8}$ " opening along each bottom side edge as shown below. Backstitch at the beginning and end of each stitching line.



6. Measure and mark a horizontal line  $\frac{7}{8}$ " from the bottom edge of the Cosy Unit. Sew along the marked line, backstitching at the beginning and end, to form a channel for a drawstring.



7. Turn each short end of (1) Channel piece under  $\frac{1}{4}$ " with WST. Press. Topstitch along each folded edge.



8. Turn each long end of the Step 7 Channel piece under  $\frac{1}{4}$ " with WST. Press.



9. Arrange (1) Step 8 Channel piece wrong side down on the lining side of (1) Cosy Unit, positioning the Channel piece 1" from the top edge as shown below. Topstitch  $\frac{1}{8}$ " along the top and bottom of the Channel piece to form a channel for a drawstring.



10. Repeat steps 1-9 to make a second Cosy Unit.

## ROSE TEA COSY PANEL

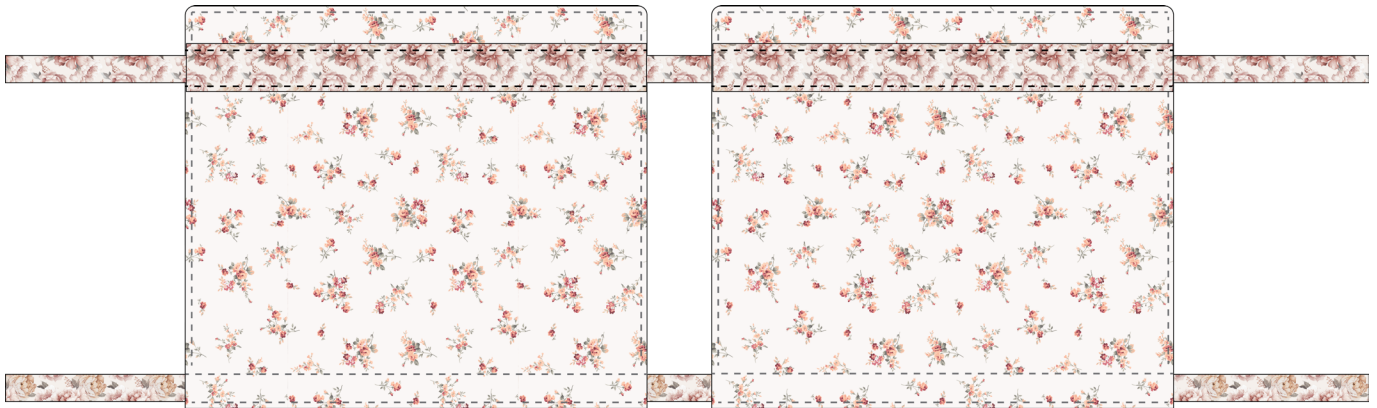
11. If desired, fuse interfacing to the wrong side of (1) Drawstring piece. Fold (1) Drawstring piece in half lengthwise with RST. Sew along the long edge and one short edge, backstitching at the beginning and end.



12. Turn the Drawstring unit RSO. Turn the open short edge under ¼" with WST. Topstitch ⅛" around the unit, sewing the short edge closed in the process.



13. Repeat steps 11-12 to make a second drawstring.
14. Lay (2) Cosy Units side by side with the lining sides facing up as shown below. Thread (1) drawstring through the top channels of both units. Next, thread (1) drawstring through the bottom channels of both units.



15. Wrap the finished Tea Cosy around a teapot with the loose drawstring ends facing the handle. Pull the drawstring ends tight around the teapot and tie into bows. If desired, once the Tea Cosy is in position around the teapot, pin the bottom drawstring in place. Remove the Tea Cosy from the teapot. Then sew the bottom channel openings closed, holding the drawstring in place.



Enjoy and share your Tea Cosy using the hashtags: [#daybreakontheprairiefabric](#), [#teacosypanel](#), [#rileyblakedesigns](#), and [#iloverileyblake](#).