

# WINTER CHEER PANEL QUILT

Riley Blake  
DESIGNS



59 1/2" x 59 1/2"



= Confident Beginner

07/01/2026

# WINTER CHEER PANEL QUILT

**FINISHED QUILT SIZE 59 ½" × 59 ½"**

Please read all instructions before beginning this project.  
Yardage calculated using a 42" usable width of fabric.

Pattern designed by The RBD Designers.

## GENERAL INSTRUCTIONS

Please check [www.rileyblakedesigns.com/pattern-updates](http://www.rileyblakedesigns.com/pattern-updates) or scan the QR Code for any updates before starting this project.

This pattern requires a basic knowledge of quilting techniques and terminology. The quilt and block diagrams portrayed are virtual images. The layout and look of your project may differ when using actual fabric. It is not recommended to prewash fabric before cutting and assembling.



Always verify your panel size before beginning. If your panel measurements differ from those given in the pattern, trim to the desired size or use coping strips to alter the size of your panel. If coping strips are needed, add oversized, coordinating strips of fabric to the necessary edges of the panel, then trim to the size specified in the pattern.

WOF = Width of Fabric  
RST = Right Sides Together  
SNF = Stitch and Flip

## FABRIC REQUIREMENTS

Fabric is from the A Perfect Winter collection unless stated otherwise.

(1) P17997-PANEL Winter Cheer Panel

### Additional Fabrics:

⅓ yard C17993-RED Text  
½ yard C17994-BLUE Cocoa  
1 yard C17990-NAVY Main  
1 ¼ yards C705-AQUA Pin Dot  
1 ⅝ yards C17996-BLUE Plaid (includes binding)

## OTHER SUPPLIES

Basic Sewing Supplies  
1 ⅝ yards WB660-RED Swiss Dot On White (wide back backing)  
Batting

## CUTTING INSTRUCTIONS

When cutting fabrics, use a straight edge ruler and rotary cutter. Measurements include ¼" seam allowance. Label, allocate, and organize all cuts as noted.



### Winter Cheer Panel

Fussy cut (4) 16 ½" × 16 ½" Panel squares, centered over the motifs.\*

\*Note: If the panel motifs do not reach the edges of the required cuts, add coping strips first and then trim to the required sizes.



### Red Text\*

Cut (2) 4 ½" × WOF strips. Subcut:  
(20) 2 ½" × 4 ½" rectangles. Label as A.

\*Please note this is a directional fabric. Cutting for this fabric is listed width × height.



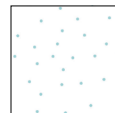
### Blue Cocoa

Cut (1) 4 ½" × WOF strip. Subcut:  
(5) 4 ½" × 4 ½" squares. Label as B.  
Cut (4) 2 ½" × WOF strips. Subcut:  
(4) 2 ½" × 27" rectangles. Label as C.



### Navy Main

Cut (6) 5" × WOF strips. Piece together end-to-end; subcut:  
(2) 5" × 59 ½" strips. Label as D.  
(2) 5" × 50 ½" strips. Label as E.



### Aqua Pin Dot

Cut (2) 4 ½" × WOF strips. Subcut:  
(2) 4 ½" × 27" rectangles. Label as F.  
Cut (13) 2 ½" × WOF strips. Subcut:  
(4) 2 ½" × 27" rectangles. Label as G.  
(40) 2 ½" × 4 ½" rectangles. Label as H.  
(80) 2 ½" × 2 ½" squares. Label as I.

# WINTER CHEER PANEL QUILT



## Blue Plaid

Cut (11) 2 1/2" x WOF strips. Set (7) aside for binding. From remaining strips, subcut:

(2) 2 1/2" x 27" rectangles. Label as J.

(20) 2 1/2" x 4 1/2" rectangles. Label as K.

Cut (5) 1 1/2" x WOF strips. Piece together end-to-end; subcut:

(2) 1 1/2" x 50 1/2" strips. Label as L.

(2) 1 1/2" x 48 1/2" strips. Label as M.

## SEWING TECHNIQUES

Sew all seams RST and with a 1/4" seam allowance unless stated otherwise. Refer to the Quilt Layout Diagram for placement of the fabrics. Press seams as desired unless stated otherwise. Dimensions listed in steps are unfinished sizes. Please refer to the following general sewing technique as this method is referenced throughout the pattern in its abbreviated form.

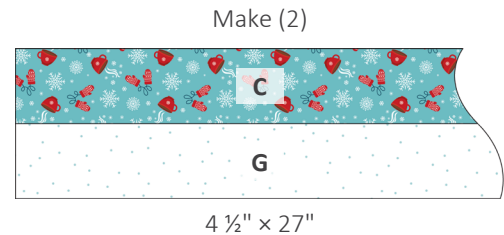
### STITCH AND FLIP METHOD (SNF)

Place (2) pieces RST, matching raw edges in the corner to be replaced. Draw a diagonal line on the wrong side of the smaller piece across the corner. Sew on the drawn line. Trim the seam allowance outside the sewn line to 1/4". Flip the smaller piece away from the larger piece and press, replacing the corner. The size of the larger, original piece does not change.

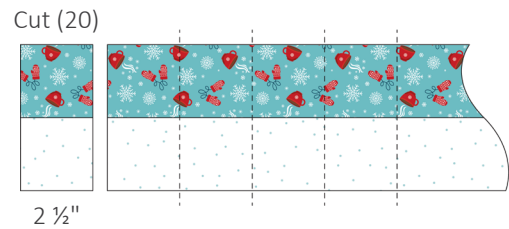


## BLOCK ASSEMBLY

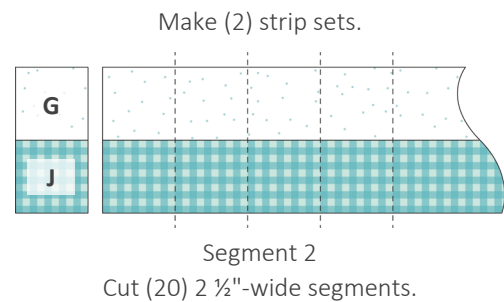
1. Sew together (1) **C**-rectangle and (1) **G**-rectangle as shown below to make (1) strip set. Repeat to make (2) strip sets. Cut the strip sets into (20) total 2 1/2"-wide segments. Label as Segment 1.



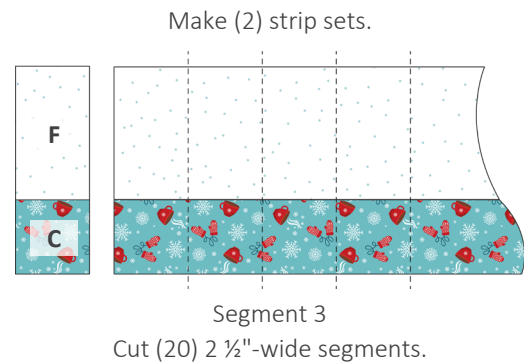
Segment 1



2. Repeat Step 1 using **G**-rectangles and **J**-rectangles to make a total of (20) 2 1/2"-wide segments as shown below. Label as Segment 2.

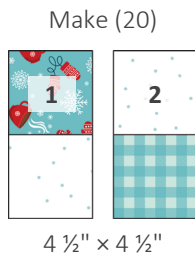


3. Repeat Step 1 using **F**-rectangles and **C**-rectangles to make a total of (20) 2 1/2"-wide segments as shown below. Label as Segment 3.

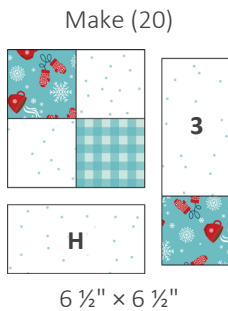


# WINTER CHEER PANEL QUILT

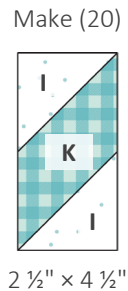
4. Sew (1) Segment 1 and (1) Segment 2 together as shown below to make (1) Four-Patch Unit. Repeat to make (20) total units.



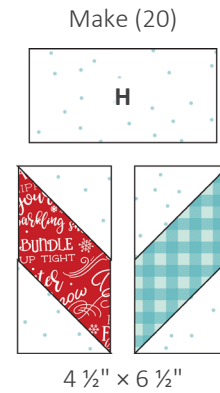
5. Sew (1) H-rectangle to the bottom of (1) Four-Patch Unit as shown below. Next, sew (1) Segment 3 to the right side to make (1) Corner Unit. Repeat to make (20) total units.



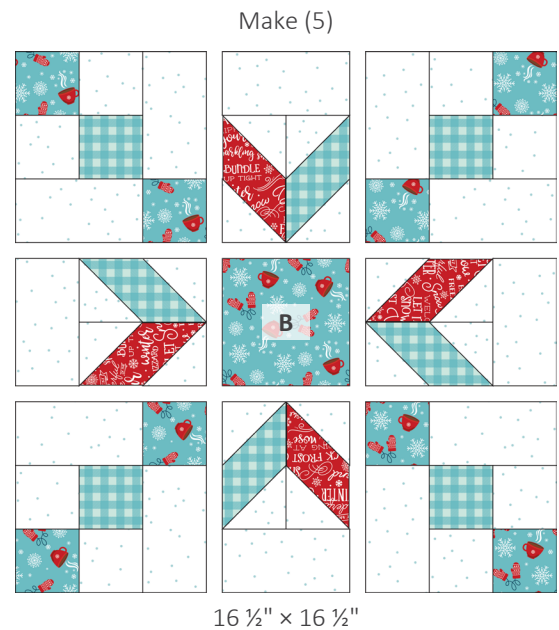
6. Gather the required pieces and use the SNF method to make the units shown below, referencing the diagrams for quantity, proper placement, and orientation.



7. Sew (1) A/I SNF unit and (1) I/K SNF unit together as shown below. Next, sew (1) H-rectangle to the top to make (1) Side Unit. Repeat to make (20) total units.



8. Arrange (4) Corner Units, (4) Side Units, and (1) B-square as shown below. Sew the units and square together into rows. Next, sew the rows together to make (1) Star Block. Repeat to make (5) total blocks.



# WINTER CHEER PANEL QUILT

## QUILT ASSEMBLY

9. Arrange (5) Star Blocks and (4) Panel squares as shown below. Sew the blocks and squares together into rows. Next, sew the rows together to make the quilt center.



48 ½" × 48 ½"

10. Sew (1) **M**-strip to each side of the quilt center as shown in the Quilt Layout Diagram, above right. Next, sew (1) **L**-strip to the top and bottom. In the same manner, sew **E**-strips to the sides and **D**-strips to the top and bottom to complete the quilt top.

## QUILT LAYOUT DIAGRAM



59 ½" × 59 ½"

## FINISHING INSTRUCTIONS

11. Layer the quilt top, batting, and backing. Baste the quilt layers together and quilt as desired. Sew the Blue Plaid binding strips together end-to-end. Then bind the trimmed, finished quilt using your favorite binding method.

Enjoy and share your quilt using the hashtags: [#aperfectwinterfabric](#), [#wintercheerpanelquilt](#), [#rileyblakedesigns](#), and [#iloverileyblake](#).