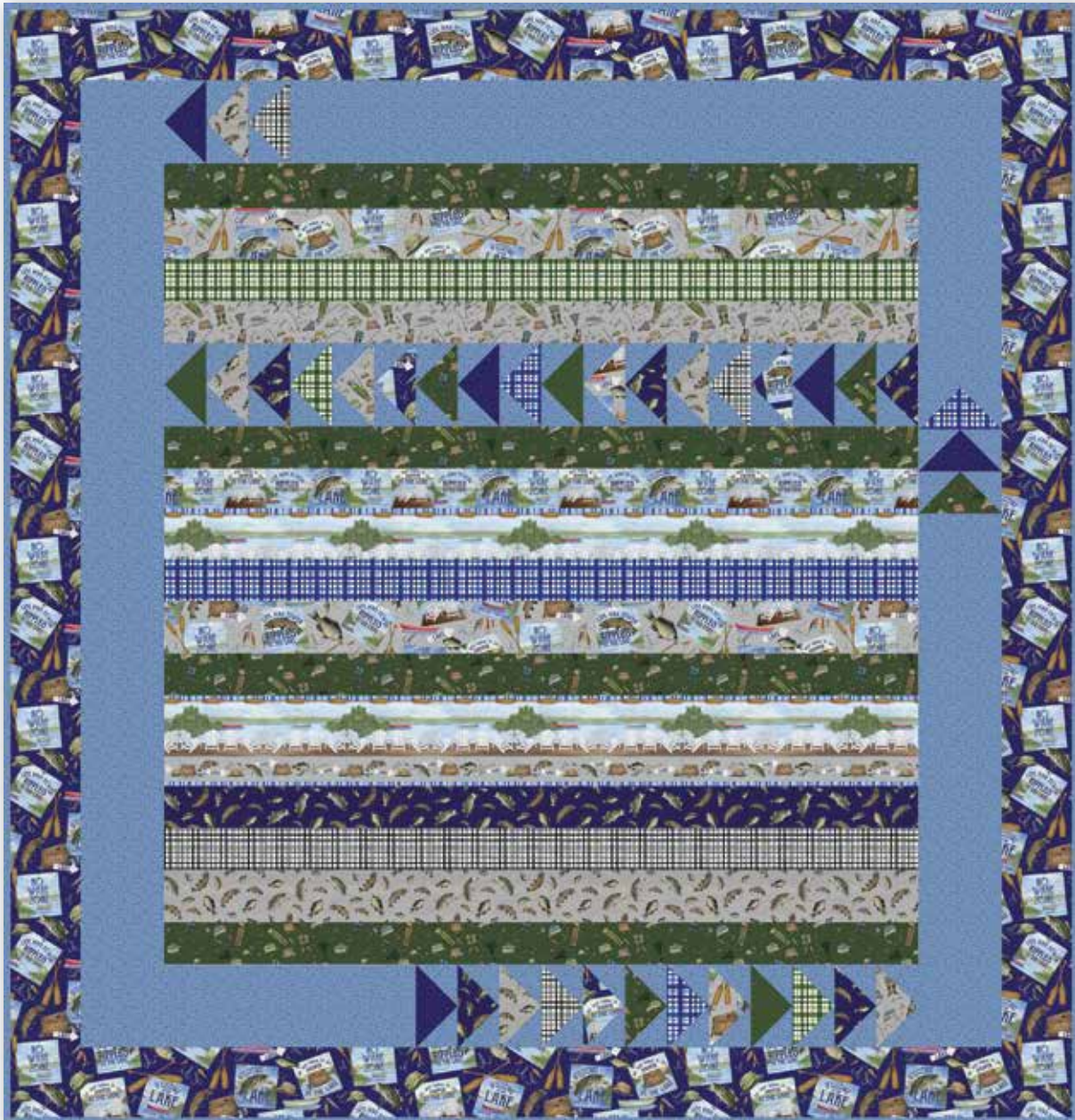


SHIPS GO SAILING


Riley Blake
DESIGNS



SHIPS GO SAILING

FINISHED QUILT SIZE 76" x 79¼"

Measurements include ¼" seam allowance.

Sew with right sides together unless otherwise stated.

Please check our website www.rileyblakedesigns.com for any revisions before starting this project. This pattern requires a basic knowledge of quilting technique and terminology. The quilt and block diagrams portrayed are virtual images. The layout and look of your project may differ when using actual fabric.

FABRIC REQUIREMENTS

½ Yard C10550 Gray Main
1½ Yards C10550 Navy Main
½ Yard C10551 Gray Gear
¾ Yard C10551 Hunter Gear
¾ Yard C10552 Gray Fish
½ Yard C10552 Navy Fish
½ Yard C10553 Blue Plaid
½ Yard C10553 Gray Plaid
½ Yard C10553 Hunter Plaid
2⅞ Yards C10554 Blue Dots*
¼ Yard C10554 Hunter Dots
¼ Yard C10554 Navy Dots
1⅞ Yards C10555 Border Stripe
*Includes Binding

CUTTING REQUIREMENTS

Please read instructions first before cutting. Seam allowances vary so measure through the center of the quilt before cutting border pieces.

Gray Main

Cut 3 strips 4¼" x WOF. Sew the strips together and cut
2 rectangles 4¼" x 54½".
Cut 1 strip 3½" x WOF. Cut the strip into 2 rectangles
3½" x 6½".

Navy Main

Cut 1 strip 3½" x WOF. Cut the strip into 3 rectangles 3½" x 6½".
Cut 8 strips 5½" x WOF for Border 2.

Gray Gear

Cut 2 strips 3½" x WOF. Sew the strips together and cut
1 rectangle 3½" x 54½" and 2 rectangles 3½" x 6½".

Hunter Gear

Cut 6 strips 3½" x WOF. Sew the strips together and cut
4 rectangles 3½" x 54½".
Cut 1 strip 3½" x WOF. Cut the strip into 4 rectangles 3½" x 6½".

Gray Fish

Cut 2 strips 4¼" x WOF. Sew the strips together and cut
1 rectangle 4¼" x 54½".
Cut 1 strip 3½" x WOF. Cut the strip into 4 rectangles 3½" x 6½".

Navy Fish

Cut 2 strips 3½" x WOF. Sew the strips together and cut
1 rectangle 3½" x 54½".
Cut 1 strip 3½" x WOF. Cut the strip into 5 rectangles 3½" x 6½".

Blue Plaid

Cut 2 strips 3½" x WOF. Sew the strips together and cut
1 rectangle 3½" x 54½" and 3 rectangles 3½" x 6½".

Gray Plaid

Cut 2 strips 3½" x WOF. Sew the strips together and cut
1 rectangle 3½" x 54½" and 3 rectangles 3½" x 6½".

Hunter Plaid

Cut 2 strips 3½" x WOF. Sew the strips together and cut
1 rectangle 3½" x 54½" and 2 rectangles 3½" x 6½".

Blue Dots

Cut 8 strips 2½" x WOF for Binding.
Cut 4 strips 6½" x **remaining length of fabric** (parallel to the selvedge) for Border 1 pieces.
Cut 4 strips 3½" x **remaining length of fabric**. Cut the strip into 72 squares 3½" x 3½".

Hunter Dots

Cut 1 strip 3½" x WOF. Cut the strip into 3 rectangles 3½" x 6½".

Navy Dots

Cut 1 strip 3½" x WOF. Cut the strip into 5 rectangles 3½" x 6½".

Border Stripe

Cut 2 strips 7" x 54½" from length of fabric.

QUILT ASSEMBLY

Refer to quilt photo for placement of fabrics and strips.

Flying Geese Row

Draw a diagonal line from corner to corner on the wrong side of 2 blue dots 3½" squares. Place a 3½" square on top of an assorted print 3½" x 6½" rectangle and sew on the line. Leave a ¼" seam allowance and trim excess. Press. Repeat on the other side. This will make 1 Flying Geese Unit. Repeat to make 36 Flying Geese Units. Sew 18 Flying Geese Units together to create the Flying Geese Row.



Flying Geese Unit

SHIPS GO SAILING

Quilt Center Assembly

Referring to quilt photo for row placement, sew the assorted print 54½" strips and the Flying Geese Row together to complete the quilt center.

Borders

Seam allowances vary so measure through the center of the quilt before cutting border pieces. Sew border strips together end to end if necessary to get the length needed. Sew side borders first.

Border 1

Side borders should be 57¾". Top and bottom borders should be 66½". Border pieces will be subcut from the 4 blue dots border strips that were cut 6½" x the length of the fabric.

Sew 3 Flying Geese Units together for the right side border. Sew a blue dots 6½" x 16½" rectangle to the top side of the Flying Geese Units and a blue dots 6½" x 32¾" rectangle to the bottom side of the Flying Geese Units to complete the right side border. Adjust the size of the blue dots rectangles if necessary to fit your quilt center. Sew the border to the right side of the quilt.

Sew a blue dots 6½" x 57¾" strip to the left side of the quilt center.

Sew 3 Flying Geese Units together for the top border. Sew a blue dots 6½" x 6½" square to the left side of the Flying Geese Units and a blue dots 6½" x 51½" rectangle to the right side of the Flying Geese Units to complete the top border. Adjust the size of the blue dots rectangles if necessary to fit your quilt center. Sew the border to the top of the quilt.

Sew 12 Flying Geese Units together for the bottom border. Sew a blue dots 6½" x 24½" rectangle to the left side of the Flying Geese Units and a blue dots 6½" x 6½" square to the right side of the Flying Geese Units to complete the bottom border. Adjust the size of the blue dots rectangles if necessary to fit your quilt center. Sew the border to the bottom of the quilt.

Border 2

Side borders should be 69¾". Top and bottom borders should be 76½".

Finish quilt by layering the quilt top, batting, and back. Bind with the blue dots strips. Have fun with your colors and enjoy the journey of making your quilt.