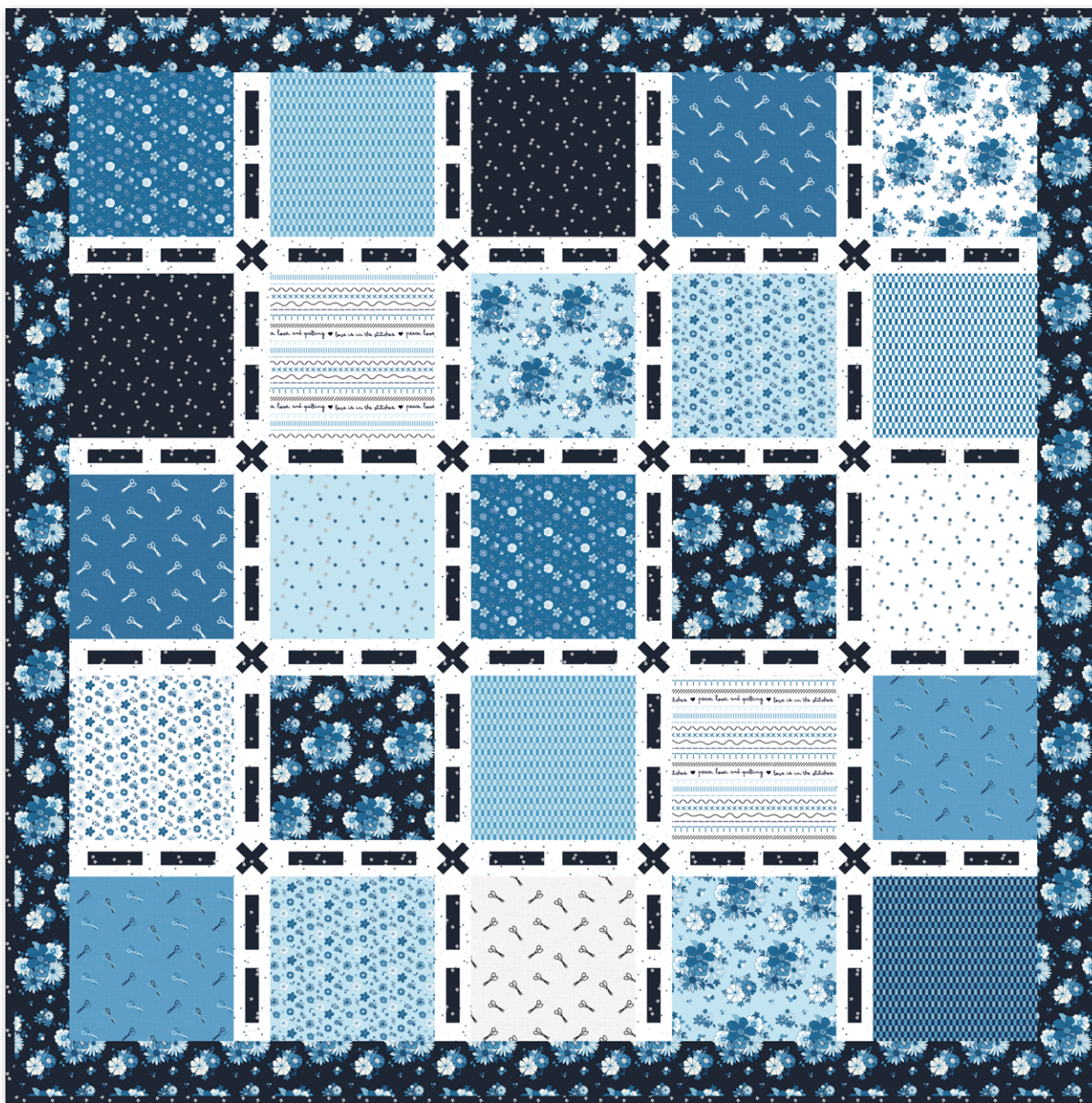


BLUE THREADS

Riley Blake
DESIGNS®



59 1/2" x 59 1/2"

blue blooms and threads
christopher thompson of the tattooed quilter



= Confident Beginner

01/01/2026

BLUE THREADS

FINISHED QUILT SIZE 59 ½" × 59 ½"

Please read all instructions before beginning this project.
Yardage calculated using a 42" usable width of fabric.

Pattern designed by Christopher Thompson.

GENERAL INSTRUCTIONS

Please check www.rileyblakedesigns.com/pattern-updates or scan the QR Code for any revisions before starting this project. This pattern requires a basic knowledge of quilting techniques and terminology. The quilt and block diagrams portrayed are virtual images. The layout and look of your project may differ when using actual fabric. It is not recommended to prewash fabric before cutting and assembling.



WOF = Width of Fabric

RST = Right Sides Together

FABRIC REQUIREMENTS

Fabrics are from the Blue Blooms and Threads collection unless stated otherwise.

(1) 10-17120-42 10" Stacker

Additional Fabrics:

¾ yard C17120-NAVY Main

1 yard C730-BLUECAROLINA Blossom on White

⅞ yard C17124-NAVY Ditsy (includes binding)

OTHER SUPPLIES

Basic Sewing Supplies

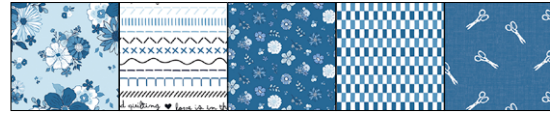
1 ⅞ yards WB640-DENIM Dapple Dot (wide back backing)

Batting

Lori Holt Cute Cuts™ Trim-it™ Ruler 2 ½" × 2 ½" (STTI-5524)
(optional)

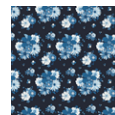
CUTTING INSTRUCTIONS

When cutting fabrics, use a straight edge ruler and rotary cutter. Measurements include ¼" seam allowance. Label, allocate, and organize all cuts as noted.



10" Stacker

Cut (25) 9 ½" × 9 ½" squares. Label as A.

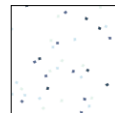


Navy Main

Cut (6) 3 ½" × WOF strips. Piece together end-to-end; subcut:

(2) 3 ½" × 59 ½" strips. Label as B.

(2) 3 ½" × 53 ½" strips. Label as C.



Blue Carolina Blossom on White

Cut (8) 1 ½" × WOF strips. Subcut:

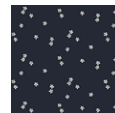
(120) 1 ½" × 2 ½" rectangles. Label as D.

Cut (2) 1 ¼" × WOF strips. Label as E.

Cut (14) 1 ⅞" × WOF strips. Label as F.

Cut (3) 1" × WOF strips. Subcut:

(64) 1" × 1 ½" rectangles. Label as G.



Navy Ditsy

Cut (7) 2 ½" × WOF strips. Set aside for binding.

Cut (7) 1 ¼" × WOF strips. Label as H.

Cut (2) 1" × WOF strips. Set (1) aside and label as I.

From remaining strip, cut:

(16) 1" × 2 ½" rectangles. Label as J.

SEWING TECHNIQUES

Sew all seams RST and with a ¼" seam allowance unless stated otherwise. Refer to the Quilt Layout Diagram for placement of the prints. Press seams as desired unless stated otherwise. Dimensions listed in steps are unfinished sizes.

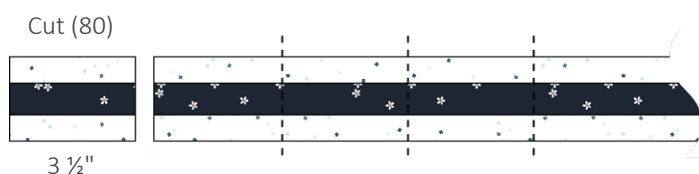
BLUE THREADS

QUILT ASSEMBLY

1. Sew (2) **F**-strips and (1) **H**-strip together as shown below to make (1) strip set. Repeat to make (7) total strip sets.



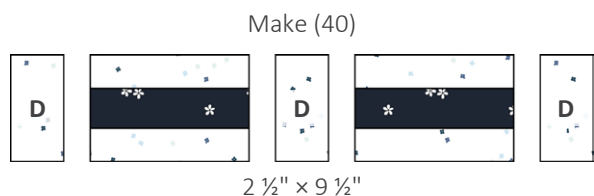
2. Cut the strip sets into (80) $3\frac{1}{2}"$ -wide segments.



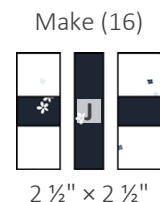
3. Repeat steps 1-2 using **E**-strips and **I**-strip to make (1) strip set. Cut the strip set into (32) $1\frac{1}{4}"$ -wide segments.



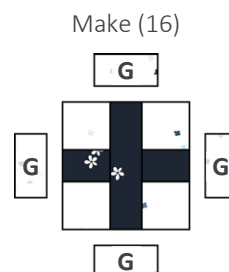
4. Sew (3) **D**-rectangles and (2) F/H segments together as shown below to make (1) Sashing Rectangle Unit. Repeat to make (40) total units.



5. Sew (2) E/I segments and (1) **J**-rectangle together as shown below to make (1) Plus Unit. Repeat to make (16) total units.



6. Sew (1) **G**-rectangle centered along each edge of (1) Plus Unit as shown below. Repeat to make (16) total units.

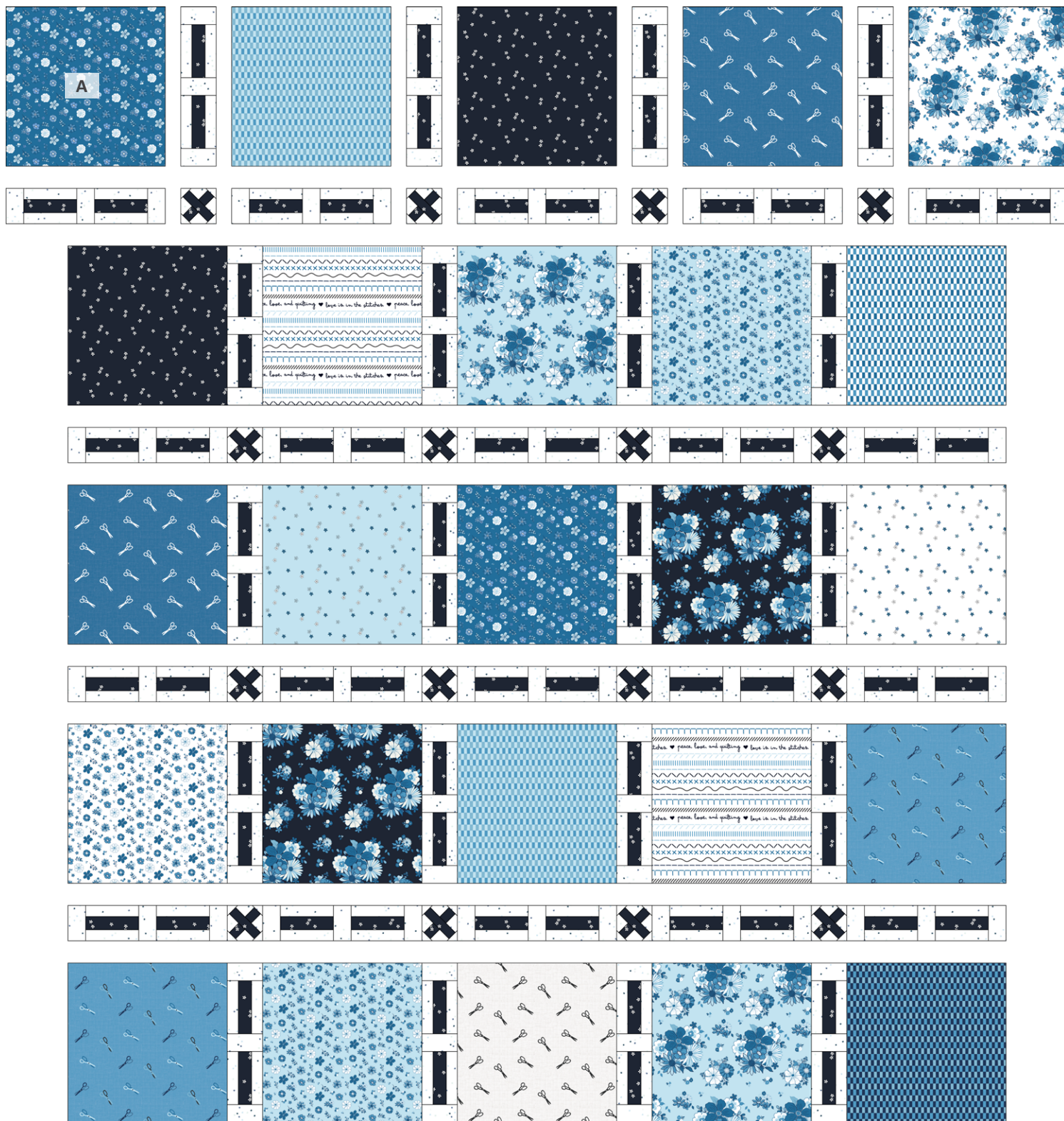


7. Rotate (1) Step 6 unit 45° to form an X. Trim the unit to measure $2\frac{1}{2}" \times 2\frac{1}{2}"$, making sure to trim at least $\frac{1}{4}"$ outside the points of the **I**- and **J**-pieces. Repeat to make (16) total Sashing Square Units.



BLUE THREADS

8. Arrange (25) **A**-squares, (40) Sashing Rectangle Units, and (16) Sashing Square Units as shown below. Sew the squares and units together into rows. Next, sew the rows together to make the quilt center.

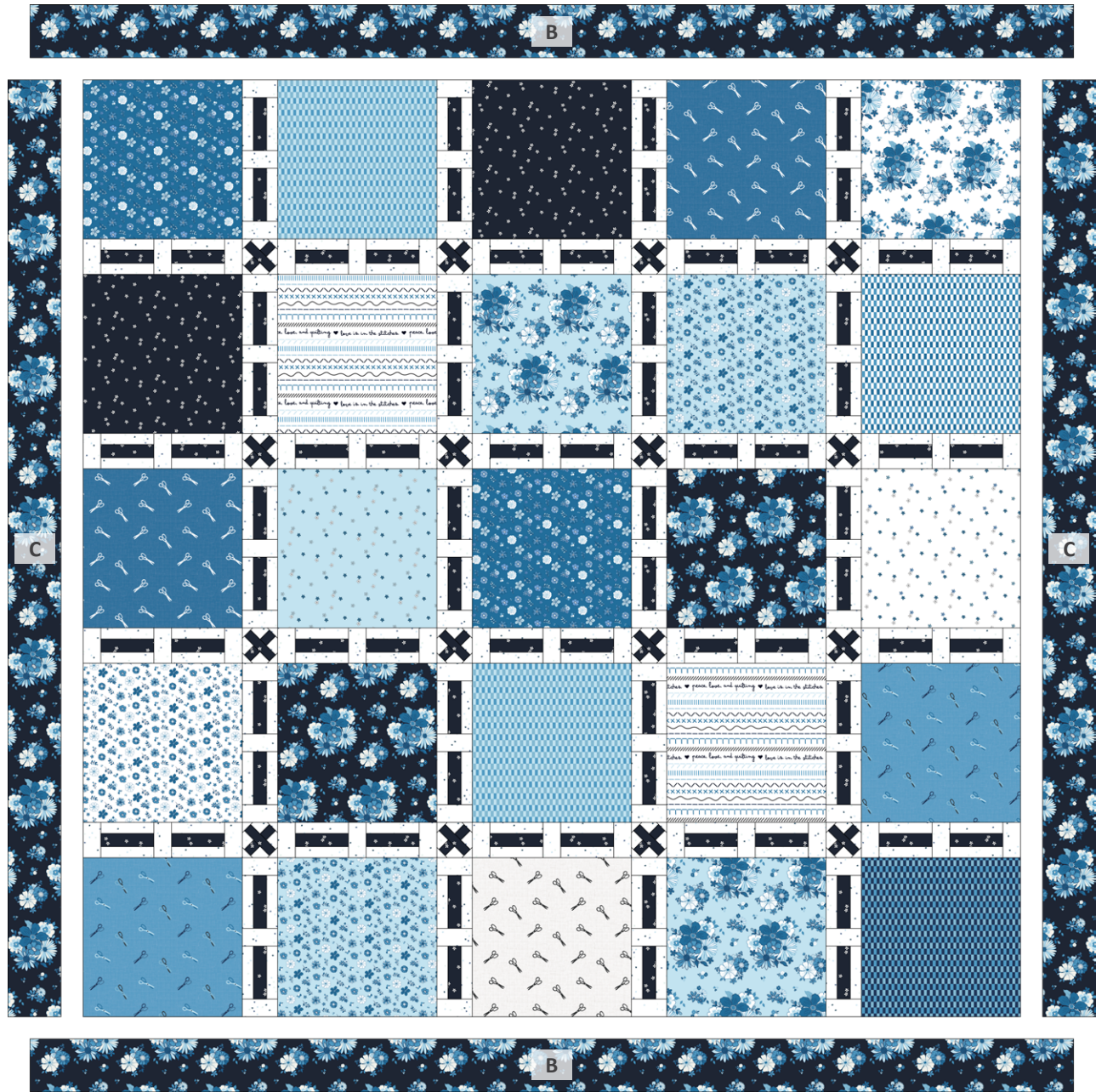


53 ½" × 53 ½"

BLUE THREADS

9. Sew (1) **C**-strip to each side of the quilt center as shown below. Next, sew (1) **B**-strip to the top and bottom to complete the quilt top.

QUILT LAYOUT DIAGRAM



59 1/2" x 59 1/2"

FINISHING INSTRUCTIONS

10. Layer the quilt top, batting, and backing. Baste the quilt layers together and quilt as desired. Sew the Navy Ditsy binding strips together end-to-end. Then bind the trimmed, finished quilt using your favorite binding method.

Enjoy and share your quilt using the hashtags: [#bluebloomsandthreadsfabric](#), [#bluethreadsquilt](#), [#rileyblakedesigns](#), and [#iloverileyblake](#).