

FOLK ART AMERICA

Riley Blake
DESIGNS



BRIGHT STARS

by Teresa Kogut

FOLK ART AMERICA

FINISHED QUILT SIZE 54" × 56"

Measurements include ¼" seam allowance.

Sew with right sides together unless otherwise stated.

Please check our website www.rileyblakedesigns.com for any revisions before starting this project. This pattern requires a basic knowledge of quilting techniques and terminology. The quilt and block diagrams portrayed are virtual images. The layout and look of your project may differ when using actual fabric.

KIT INCLUDES

- 1 Bright Stars 5" Stacker (5-13100-42)
- 1½ yards Burgundy Vases (C13103)
- ½ yard Blue Stripe (C13107) for binding
- 1 yard Natural Stars (C13106)
- ⅞ yard Off-White Linen (LN300)
- ⅓ yard Taupe Quilt Blocks (C13104)
- ⅛ yard each of:
 - Navy Main (C13100)
 - Blue Floral (C13102)
 - Red Floral (C13102)
 - Navy Vases (C13103)
 - Red Quilt Blocks (C13104)
 - Blue Dots (C13105)
- Fat 8th Navy Stars (C13106)

OTHER SUPPLIES

- ⅓ yard lightweight double-sided fusible interfacing
(not included in the kit)

CUTTING REQUIREMENTS

- Please read instructions before cutting fabrics.
- Refer to the quilt photo for the placement of each of the fabrics included in the kit.
- Use a straight edge ruler and rotary cutter to cut your fabrics.
- Label pieces as they are cut.

5" Stacker

Select 13 - 5" squares for appliqué stars.



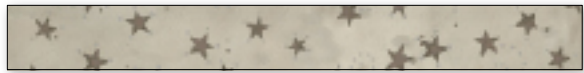
Burgundy Vases

Cut 5 strips 6½" × WOF for outer border.



Blue Stripe

Cut 6 strips 2½" × WOF for binding.



Natural Stars

Cut 2 strips 7½" × WOF; subcut:

1- 7½" × 40½" sashing strip N

2- 7½" × 19½" sashing strips M

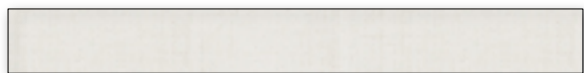
Cut 1 strip 4½" × WOF; subcut:

8- 4½" squares B

Cut 4 strips 2½" × WOF; subcut:

2- 2½" × 42½" strips P

2- 2½" × 40½" strips O



Off-White Linen

Cut 3 strips 2½" × WOF; subcut:

1- 2½" × 18" strip G

8- 2½" × 12" rectangles K

Cut 2 strips 2¼" × WOF; subcut:

8 - 2¼" × 7½" rectangles H

Cut 2 strips 2" × WOF; subcut:

1- 2" × 27" strip G

4- 2" × 12½" rectangles L

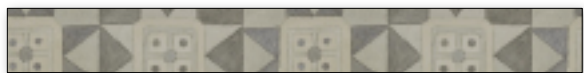
Cut 1 strip 1¾" × WOF; subcut

8- 1¾" × 5" rectangles I

Cut 1 strip 1½" × WOF; subcut:

1- 1½" × 27" strip G

Cut 4 strips 1½" × WOF. D



Taupe Quilt Blocks

Cut 1 strip 3½" × WOF; subcut:

1- 3½" × 18" strip F

Cut 1 strip 3" × WOF; subcut:

1- 3" × 27" strip F

Cut 1 strip 2½" × WOF; subcut:

1- 2½" × 27" strip F

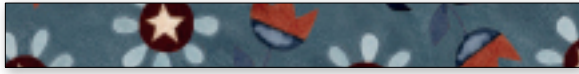


Navy Main

Cut 1 strip 4½" × WOF; subcut:

2- 4½" × 12½" rectangles A

FOLK ART AMERICA



Blue Floral

Cut 1 strip $4\frac{1}{2}$ " \times WOF; subcut:

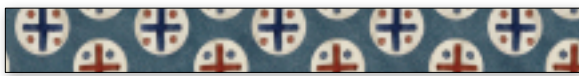
- 2- $4\frac{1}{2}$ " squares C
- 2- 3 " \times 5 " rectangles J



Navy Vases

Cut 1 strip $4\frac{1}{2}$ " \times WOF; subcut:

- 2- $4\frac{1}{2}$ " \times $12\frac{1}{2}$ " rectangles A



Blue Dots

Cut 1 strip $4\frac{1}{2}$ " \times WOF; subcut:

- 2- $4\frac{1}{2}$ " squares C



Navy Stars

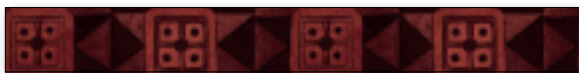
Cut 2 strips 3 " \times 9 "; subcut:

- 2- 3 " \times 5 " rectangles J



Red Floral

- Cut 2 strips $1\frac{1}{2}$ " \times WOF. E



Red Quilt Blocks

- Cut 2 strips $1\frac{1}{2}$ " \times WOF. E

QUILT ASSEMBLY

- Refer to the cutting requirements list, cover image and quilt layout diagram for the placement of prints.
- Organize the pieces alphabetically, since the instructions will call for them in alphabetical order.
- Follow pressing arrows for successful piecing.
- All angled seams are constructed using the Stitch & Flip method. The method is explained next and referenced in the pattern.

Stitch & Flip Method

Place a square right sides together on top of a base square or rectangle, matching raw edges in one corner. Draw a diagonal line on the wrong side of the square across the corner to be replaced.

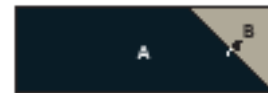
Stitch on the drawn line. Trim off the corner $\frac{1}{4}$ " from the stitched line.

Flip the square away from the base replacing the corner with a triangle. The size of the base has not changed.



House Roof

1. Using the Stitch & Flip method, replace the upper right corner of 4 A rectangles with a B square to make 4 Roof units 1.



Roof unit 1

2. Using the Stitch & Flip method, replace one-half of 4 B squares with a C square to make 4 Half-square triangles.



Half-square triangle

3. Sew a Half-square triangle to the left side of each Roof unit 1 to complete the Roof. Make 4 ($16\frac{1}{2}$ " \times $4\frac{1}{2}$ ").



Roof

House Sides

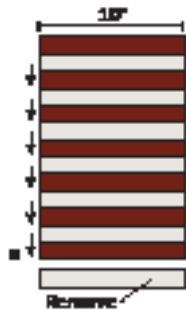
1. Pair a WOF D strip with a WOF E strip. Sew together lengthwise to make a Strip set. Make 4 Strip sets total, 2 from each red print.
2. Crosscut Strip sets into 10"-wide segments. You will need 7 segments in each red print.



Strip set

FOLK ART AMERICA

3. Using matching red prints, sew 7 segments together lengthwise alternating red print and linen throughout as shown (a).



4. Remove the last linen strip from the Strip set. The Strip set now begins and ends with a red strip (a).

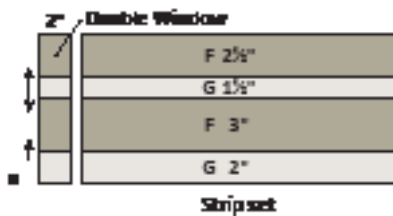
5. Square up one side. Crosscut 2 segments each $4\frac{1}{2}$ " wide to make 2 House side units (b) $4\frac{1}{2}$ " \times $13\frac{1}{2}$ ".



6. Repeat Steps 3–5 using 7 segments of the second red print for a total of 4 House side units.

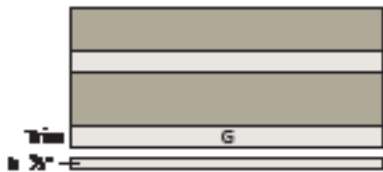
House Windows

1. Sew 27" long F and G strips together lengthwise in a Strip set (a) in the following sequence top to bottom:
 $2\frac{1}{2}$ " F + $1\frac{1}{2}$ " G + 3" F + 2" G

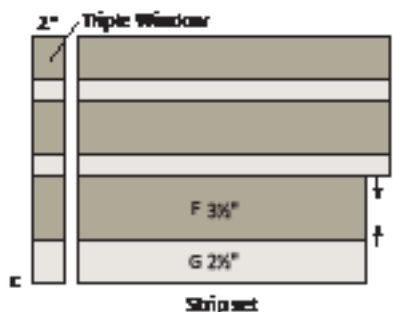


2. Square up one side and crosscut 2" segments to make Double Windows (a) 2 " \times $7\frac{1}{2}$ ". Make 4.

3. Trim $\frac{1}{2}$ " from the last Linen strip G (b).



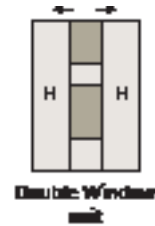
4. Sew the 18" long strips F and G together lengthwise in that order to the freshly trimmed bottom edge of the Strip set (c). They may be shorter than the original strips.



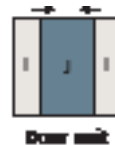
5. Square up one edge and crosscut 2" segments to make Triple Windows (c) 2 " \times 12 ". Make 8.

House Construction

1. Sew an H rectangle to each side of a Double Window to make a Double Window unit ($5\frac{1}{2}$ " \times $7\frac{1}{2}$ "). Make 4.



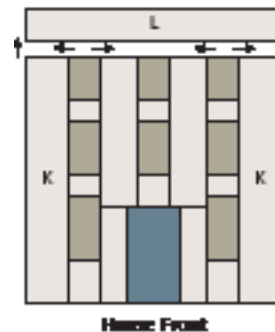
2. Sew an I rectangle to each side of a J rectangle to make a Door unit ($5\frac{1}{2}$ " \times 5 "). Make 4.



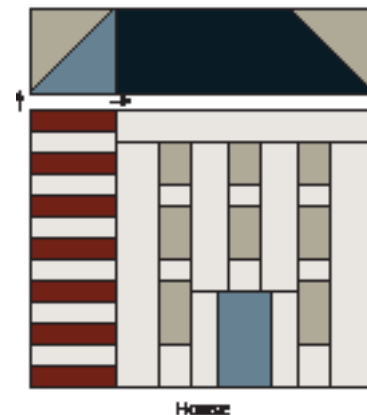
3. Sew a Double Window unit to the top of every Door unit to complete the Center Front ($5\frac{1}{2}$ " \times 12 "). Make 4.



4. Sew a Triple Window to each side of the Center Front. Sew a K rectangle to each Triple Window, and an L rectangle to the top to complete the House Front ($12\frac{1}{2}$ " \times $13\frac{1}{2}$ "). Make 4.



5. Sew a House side unit to the left of each House Front, and a Roof to the top to complete the House ($16\frac{1}{2}$ " \times $17\frac{1}{2}$ "). Make 4.



FOLK ART AMERICA

APPLIQUÉ

- Trace 13 stars and 1 circle on the paper side of the fusible interfacing. Mark the red dashed lines as well. These will help to center the stars on the fabric pieces.
- Rough cut around the drawn shapes leaving about $\frac{1}{4}$ " beyond the traced line.
- Fuse stars to the wrong side of the selected 5" stacker squares; the circle to the wrong side of the remaining Navy Stars fabric.
- Once cool, cut out the shapes on the drawn line.
- Fold the M & N strips in half both lengthwise and widthwise and press to create center creases.
- Position the circle on the center of the N strip, using the dashed lines as guides to line up with the fabric's creases. Fuse the circle into place.
- Position the stars as shown in the quilt diagram, leaving about 2"-3" from all short ends to allow for seam allowances and trimming. Freely turn and adjust the stars to your liking, then fuse into place.
- Machine-stitch around the appliqué pieces using either invisible or coordinating thread and a straight stitch.
- Trim the M strips to $6\frac{1}{2}" \times 17\frac{1}{2}"$; the N strip to $6\frac{1}{2}" \times 38\frac{1}{2}"$.

Quilt Center

Refer to the Quilt Layout Diagram and cover art for placement details.

1. Sew 2 Houses together with an M sashing strip between them to make a House row ($38\frac{1}{2}" \times 17\frac{1}{2}"$). Make 2 rows.
2. Sew the House rows together with an N sashing strip in between ($38\frac{1}{2}" \times 40\frac{1}{2}"$).

Inner Border

1. Sew an O strip to each side of the quilt center.
2. Sew a P strip to the top, another to the bottom of the quilt center ($42\frac{1}{2}" \times 44\frac{1}{2}"$).

Outer Border

1. Sew the $6\frac{1}{2}"$ Burgundy Vases strips together end-to-end. Cut 2 strips $44\frac{1}{2}"$ in length and sew one to each side of the quilt.
2. Cut 2 strips $54\frac{1}{2}"$ in length and sew one to the top, the other to the bottom of the quilt; the quilt now measures $54\frac{1}{2}" \times 56\frac{1}{2}"$.

FINISHING

Finish your quilt by layering the quilt top, batting, and back. Quilt as desired. Bind with $2\frac{1}{2}"$ Blue Stripe strips.

Have fun and enjoy the journey of making your quilt!

FOLK ART AMERICA

Quilt Layout Diagram



FOLK ART AMERICA

