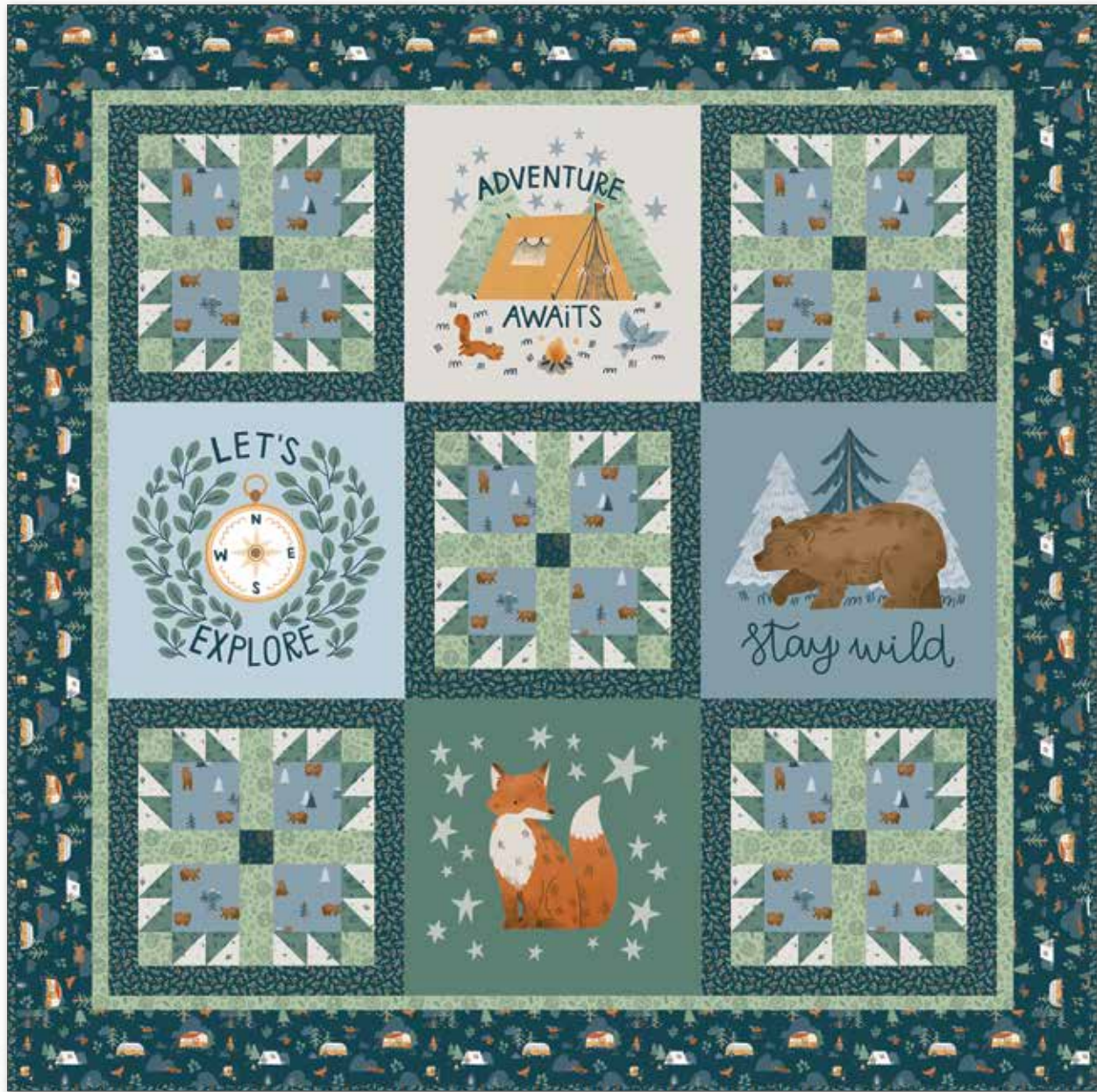


# CAMP WOODLAND PANEL QUILT

  
**Riley Blake**  
DESIGNS



  
CAMP  
woodland  
by NATÁLIA JUAN ABELLÓ



# CAMP WOODLAND PANEL QUILT

## FINISHED QUILT SIZE 63" x 63"

Measurements include  $\frac{1}{4}$ " seam allowance.

Sew with right sides together unless otherwise stated.

Please check our website [www.rileyblakedesigns.com/pattern-updates](http://www.rileyblakedesigns.com/pattern-updates) for any revisions before starting this project.

This pattern requires a basic knowledge of quilting technique and terminology. The quilt and block diagrams portrayed are virtual images. The layout and look of your project may differ when using actual fabric.

## FABRIC REQUIREMENTS

- 1 P10467 Camp Woodland Panel
- 1 Yard C10460 Navy Main
- $\frac{1}{2}$  Yard C10461 Denim Grizzly Bears
- $\frac{1}{3}$  Yard C10463 Pine Life
- $\frac{2}{3}$  Yard C10464 Navy Pinecones
- $\frac{1}{8}$  Yard C10465 Navy Badges
- $\frac{2}{3}$  Yard C10465 Pistachio Badges
- $\frac{1}{3}$  Yard C10466 Off White Trees
- $\frac{1}{2}$  Yard Binding

## CUTTING REQUIREMENTS

Please read instructions first before cutting.

WOF - width of fabric.

### Camp Woodland Panel

Fussy cut 4 squares 18" x 18" centered over the sayings.

### Navy Main

Cut 7 strips  $4\frac{1}{2}$ " x WOF for Border 2.

### Navy Pinecones

Cut 10 strips  $2\frac{1}{4}$ " x WOF.

Sub-cut from strips:

10 -  $2\frac{1}{4}$ " x 18" strips

10 -  $2\frac{1}{4}$ " x  $14\frac{1}{2}$ " strips

### Pine Life

Cut 3 strips 3" x WOF.

Sub-cut from strips:

40 - 3" squares

### Navy Badges

Cut 1 strip  $2\frac{1}{2}$ " x WOF.

Sub-cut from strip:

5 -  $2\frac{1}{2}$ " squares

### Off White Trees

Cut 3 strips 3" x WOF.

Sub-cut from strips:

40 - 3" squares

### Denim Grizzly Bears

Cut 3 strips  $4\frac{1}{2}$ " x WOF.

Sub-cut from strips:

20 -  $4\frac{1}{2}$ " squares

### Pistachio Badges

Cut 5 strips  $2\frac{1}{2}$ " x WOF.

Sub-cut from strips:

20 -  $2\frac{1}{2}$ " x  $6\frac{1}{2}$ " rectangles

20 -  $2\frac{1}{2}$ " squares

Cut 6 strips  $1\frac{1}{2}$ " x WOF for Border 1.

### Binding

Cut 7 strips  $2\frac{1}{4}$ " x WOF for binding.

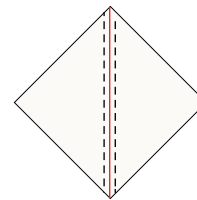
## QUILT ASSEMBLY

Refer to the quilt photo and block diagrams for the placement of prints.

### Bear Paw Block (Make 5)

Draw a diagonal line on the wrong side of the 3" Off White Trees squares.

Place a 3" Off White Trees and Pine Life square right sides together (RST). Sew  $\frac{1}{4}$ " seam on each side of the drawn line. Cut along the drawn line for 2 HSTs. Press the seam towards the dark fabric. Trim the HSTs to  $2\frac{1}{2}$ " x  $2\frac{1}{2}$ ". Repeat to make 80 HSTs.



HST  
Make 80

Sew 2 HSTs together as shown ( $2\frac{1}{2}$ " x  $4\frac{1}{2}$ "). Sew the HST pair to the right of a  $4\frac{1}{2}$ " Denim Grizzly Bears square.



# CAMP WOODLAND PANEL QUILT

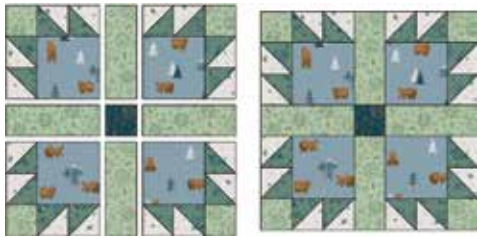
Sew 2 HSTs and a 2½" Pistachio Badges square together. Sew to the top of the 4½" Denim Grizzly Bears square to complete a Unit 1 (6½" x 6½").



Unit 1  
Make 20

Repeat to make 20 Unit 1.

Layout 4 Unit 1, 4 Pistachio Badges 2½" x 6½" rectangles and 1 Navy Badges 2½" square in a 9-patch. Sew the pieces into 3 rows. Press the seams towards the Pistachio Badges rectangles. Sew the rows together to complete 1 Center (14½" x 14½"). Repeat to make 5 Centers.



Center  
Make 5

Sew a 2¼" x 14½" Navy Pinecones strip to each side of a Center. Sew a 2¼" x 18" Navy Pinecones strip to the top and bottom to complete 1 Bear Paw Block (18" x 18"). Repeat to make 5 Bear Paw Blocks.



Bear Paw Block  
Make 5

## Quilt Center

Sew the Adventure Awaits and Fox Panel Block between 2 Bear Claw Blocks to complete 1 Row 1 and 1 Row 3 (18" x 53").

Sew a Bear Paw Block between the Let's Explore and Stay Wild Panel Blocks to make a Row 2 (18" x 53").

Sew Row 2 between Rows 1 and 3 to complete the Quilt Center (53" x 53").

## Borders

Seam allowances vary so measure through the center of the quilt before cutting border pieces. Sew border strips together end to end to get the length needed. Sew side borders first. Press seams towards the borders.

### Border 1

Side borders should be 53". Top and bottom borders should be 55".

### Border 2

Side borders should be 55". Top and bottom borders should be 63".

Finish quilt by layering the quilt top, batting, and back. Bind with your favorite Camp Woodland print. Have fun with your colors and enjoy the journey of making your quilt.