

EASTER BASKETS

Riley Blake
DESIGNS



Easter
EGG
HUNT

by NATÀLIA JUAN ABELLÓ

EASTER BASKETS

FINISHED QUILT SIZE 43½" x 43½"

Measurements include ¼" seam allowance.

Sew with right sides together unless otherwise stated.

Please check our website www.rileyblakedesigns.com/pattern-updates for any revisions before starting this project. This pattern requires a basic knowledge of quilting technique and terminology. The quilt and block diagrams portrayed are virtual images. The layout and look of your project may differ when using actual fabric.

FABRIC REQUIREMENTS

⅝ yard Powder Geo (C10275 Powder)*

½ yard Yellow Carrots (C10272 Yellow)

⅝ yard Mint Main (C10270 Mint)

Fat Quarter each of the following Easter Egg Hunt prints:

Mint Main (C10270 Mint)

Powder Main (C10270 Powder)

Pink Eggs (C10271 Pink)

Mustard Eggs (C10271 Mustard)

Mint Carrots (C10272 Mint)

Powder Carrots (C10272 Powder)

Yellow Carrots (C10272 Yellow)

Coral Bunnies (C10273 Coral)

Mustard Bunnies (C10273 Mustard)

Mint Floral (C10274 Mint)

Pink Floral (C10274 Pink)

Coral Geo (C10275 Coral)

Yellow Geo (C10275 Yellow)

⅞ yard Cloud Solid Confetti Cottons (C120 Cloud)

* Includes binding

CUTTING REQUIREMENTS

Please read instructions first before cutting.

WOF - width of fabric; LOF - length of fabric.

Label pieces as they are cut.

Powder Geo

Cut 8 strips 2" x LOF for Border 2.

Cut 11 strips 2¼" x LOF for Binding.

Yellow Carrots

Cut 1 strip 2" x WOF.

Sub-cut from strip:

(2) 2" x 15½" rectangles (F)

Cut 5 strips 2" x WOF for horizontal sashing and Border 1.

Mint Main

Cut 5 strips 3½" x WOF for Border 3.

Fat Quarters

Keep the pieces, G, H, I and J, cut from each fat quarter, together in basket sets. There is enough fabric to fussy cut the basket base (G).

Select the following fat quarters and cut 2 basket sets from each:



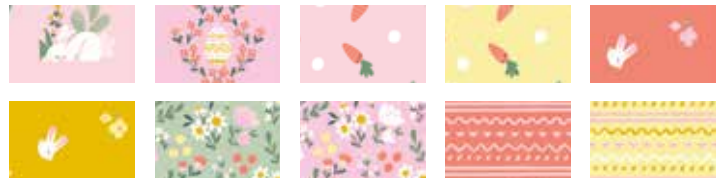
1 - 5⅜" square; cut on one diagonal for 2 triangles (G)

2 - 3¼" squares (H)

2 - 1¼" x 4½" rectangles (I)

2 - 1¼" x 5½" rectangles (J)

Select the following fat quarters and cut 1 basket set from each:



1 - 5⅜" square; cut on one diagonal for 1 triangle (G);
discard the second triangle

1 - 3¼" square (H)

1 - 1¼" x 4½" rectangle (I)

1 - 1¼" x 5½" rectangle (J)

Cloud Solid

Cut 1 strip 3⅞" x WOF.

Sub-cut from strip:

8 - 3⅞" squares; cut on one diagonal for 16 triangles (A)

Cut 2 strips 3¼" x WOF.

Sub-cut from strips:

16 - 3¼" squares (B)

3 - 2¾" squares (C)

Cut 3 strips 2¾" x WOF.

Sub-cut from strips:

45 - 2¾" squares (C)

Cut 4 strips 2" x WOF.

Sub-cut from strips:

4 - 2" x 15½" rectangles (D)

8 - 2" x 7¼" rectangles (E)

EASTER BASKETS

QUILT ASSEMBLY

Refer to the quilt photo for the placement of prints.
Triangle pieces have bias edges. Handle with care.

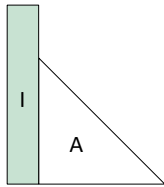
Baskets (Make 16)

Press seams open to reduce bulk.

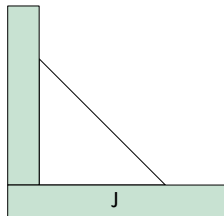
Select the following pieces:

- 1 A triangle
- 1 B square
- 3 C squares
- 1 set of basket pieces G, H, I and J.

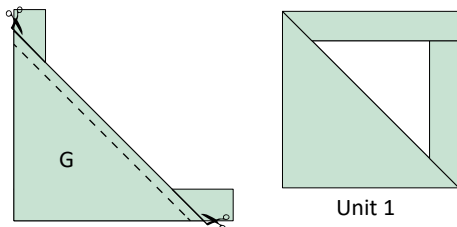
Sew the I rectangle to the left edge of the A triangle, lining up the bottom edges. The I rectangle will be longer than the triangle.



Sew the J rectangle to the bottom edge of the A triangle, lining up the left edge. The J rectangle will be longer than the triangle.

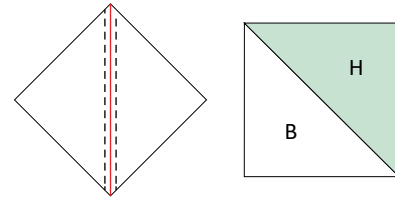


Place the G triangle on top of the A triangle, right sides together (RST), matching the 90° corners. Sew ¼" seam along the long edge of the G triangle. Trim the excess I and J rectangles and press open to make a Unit 1 (5" x 5").

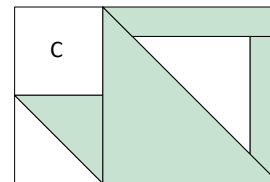


Draw a diagonal line on the wrong side of the B square.

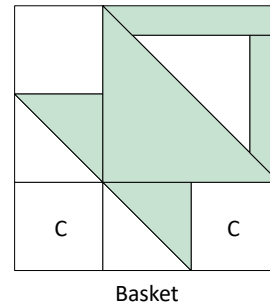
Place the B square and H square RST. Sew ¼" seam on each side of the drawn line. Cut along the drawn line and press open for 2 half square triangles (HSTs). Trim HSTs to 2¾" x 2¾".



Sew 1 C square to the top of 1 HST. Sew to the left edge of Unit 1 (5" x 7¼").



Sew the remaining HST between 2 C squares. Sew to the bottom of Unit 1 to complete 1 Basket (7¼" x 7¼").



Repeat to make 16 Baskets.

EASTER BASKETS

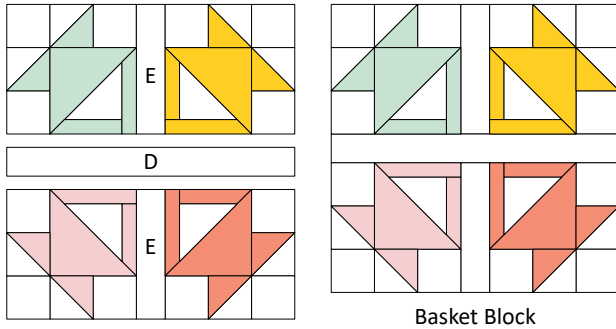
Basket Blocks (Make 4)

Press seams towards the D and E rectangles.

Select the following pieces:

- 4 Baskets
- 1 D rectangle
- 2 E rectangles

Lay out the Baskets and E rectangles into 2 rows. Sew the pieces together. Sew the rows to the top and bottom of the D rectangle to complete 1 Basket Block ($15\frac{1}{2}'' \times 15\frac{1}{2}''$).



Repeat to make 4 Basket Blocks.

Quilt Center

Seam allowances vary so measure through the center of the quilt before cutting horizontal sashing and border pieces. Press seams towards the sashing and borders.

Sew a Basket Block to each side of 1 F rectangle to complete 1 Row ($15\frac{1}{2}'' \times 32''$). Repeat to make 2 Rows.

Sew the Rows to the top and bottom of the Yellow Carrot horizontal sashing (should be $32''$) to complete the Quilt Center ($32'' \times 32''$).

Borders

Sew side borders first.

Border 1

Side borders should be $32''$. Top and bottom borders should be $35''$.

Border 2

Side borders should be $35''$. Top and bottom borders should be $38''$.

Border 3

Side borders should be $38''$. Top and bottom borders should be $44''$.

Finish quilt by layering the quilt top, batting, and back. Bind with Powder Geo strips. Have fun with your colors and enjoy the journey of making your quilt.

Quilt Layout

