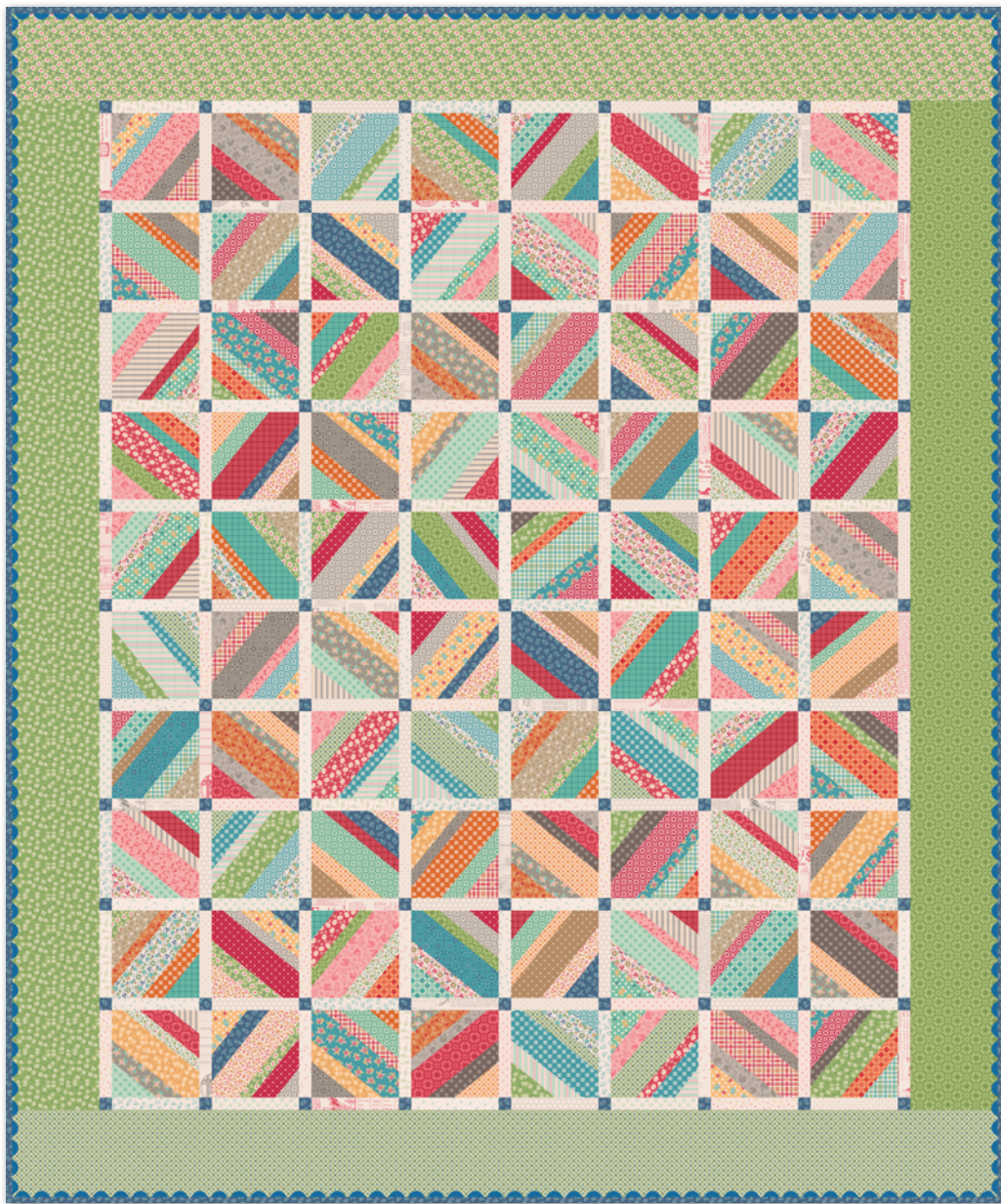


PAPER STRINGS



79 1/2" x 95 1/2"



= Confident Beginner

12/01/2025

PAPER STRINGS

FINISHED QUILT SIZE 79 ½" × 95 ½"

Please read all instructions before beginning this project.

Yardage calculated using a 42" usable width of fabric.

Pattern designed by Lori Holt of Bee in my Bonnet.

GENERAL INSTRUCTIONS

Please check www.rileyblakedesigns.com/pattern-updates or scan the QR Code for any revisions before starting this project.

This pattern requires a basic knowledge of quilting techniques and terminology. The quilt and block diagrams portrayed are virtual images. The layout and look of your project may differ when using actual fabric. It is not recommended to prewash fabric before cutting and assembling.



WOF = Width of Fabric

RST = Right Sides Together

FABRIC REQUIREMENTS

Fabric is from the Farmer's Daughter collection.

(2) 10-17160-42 10" Stackers

¼ Yard of Each:

C17180-RAINDROP Feedsack Background
C17181-RAINDROP Circles Background
C17182-LEAF Seedling Background
C17183-SAGE Clover Background
C17184-THYME Tractors Background
C17185-MAPLE Calico Background
C17186-RUSTIC Chicken Wire Background
C17187-CORAL Baby Chicks Background
C17188-CORAL Cherries Background
C17189-TEAROSE Chicken Tracks Background
C17190-RUSTIC Farm Life Background
C17190-TEAROSE Farm Life Background

½ Yard of Each:

C17163-THYME Bandana
C17165-THYME Bonnet
C17166-THYME Bows
C17174-THYME Sunflower

Additional Fabric:

1 yard C17170-DENIM Vintage (includes binding)

OTHER SUPPLIES

Basic Sewing Supplies

Batting

2 ½ yards WB17199-DENIM Bonnet (wide back backing)

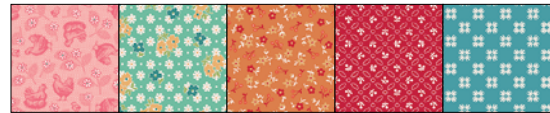
(2) Lori Holt 10" Paper Strings Quilt Paper (ST-46800)

(1) Lori Holt Vintage Trim Large Denim Wooden Spool (STVT-8539)

Lori Holt Cute Cuts™ Trim-it™ Ruler 7 ½" × 7 ½" (STTI-21863)

CUTTING INSTRUCTIONS

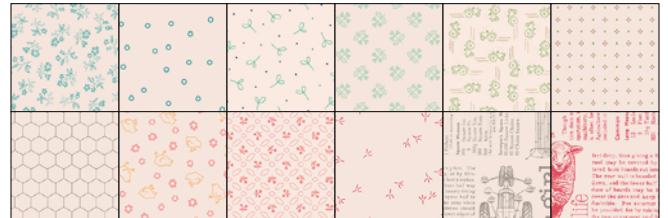
When cutting fabrics, use a straight edge ruler and rotary cutter. Measurements include ¼" seam allowance. Label, allocate, and organize all cuts as noted.



(2) 10" Stackers

Set (80) 10" × 10" squares aside.

Note: The quilt shown uses (84) squares for a larger variety of fabrics, although not all pieces cut from the paper are used in the final quilt.



(12) ¼ Yard Pieces

From each ¼ yard piece, cut (3) 1 ½" × WOF strips. Subcut strips into a total of:

(178) 1 ½" × 7 ½" rectangles. Label as A.



Thyme Bandana and Thyme Bonnet

From each ½ yard piece, cut (2) 7 ½" × WOF strips. Piece together end-to-end; subcut:

(1) 7 ½" × 81 ½" strip. Label as B.

PAPER STRINGS



Thyme Bows and Thyme Sunflower

From each $\frac{1}{2}$ yard piece, cut (2) $7\frac{1}{2}$ " \times WOF strips. Piece together end-to-end; subcut:
(1) $7\frac{1}{2}$ " \times $79\frac{1}{2}$ " strip. Label as C.



Denim Vintage

Cut (9) $2\frac{1}{2}$ " \times WOF strips. Set aside for binding.
Cut (4) $1\frac{1}{2}$ " \times WOF strips. Subcut:
(99) $1\frac{1}{2}$ " \times $1\frac{1}{2}$ " squares. Label as D.

SEWING TECHNIQUES

Sew all seams RST and with a $\frac{1}{4}$ " seam allowance unless stated otherwise. Refer to the Quilt Layout Diagram for placement of the fabrics. Press seams as desired unless stated otherwise. Dimensions listed in steps are unfinished sizes.

BLOCK ASSEMBLY

Follow the instructions included in the 10" Paper Strings Quilt Paper package to make (80) total blocks. Refer to the cover image and Quilt Layout Diagram for fabric combinations and placement of the prints. Square each block using the Lori Holt Cute Cuts™ Trim-it™ Ruler to measure $7\frac{1}{2}$ " \times $7\frac{1}{2}$ ".

Make (80)

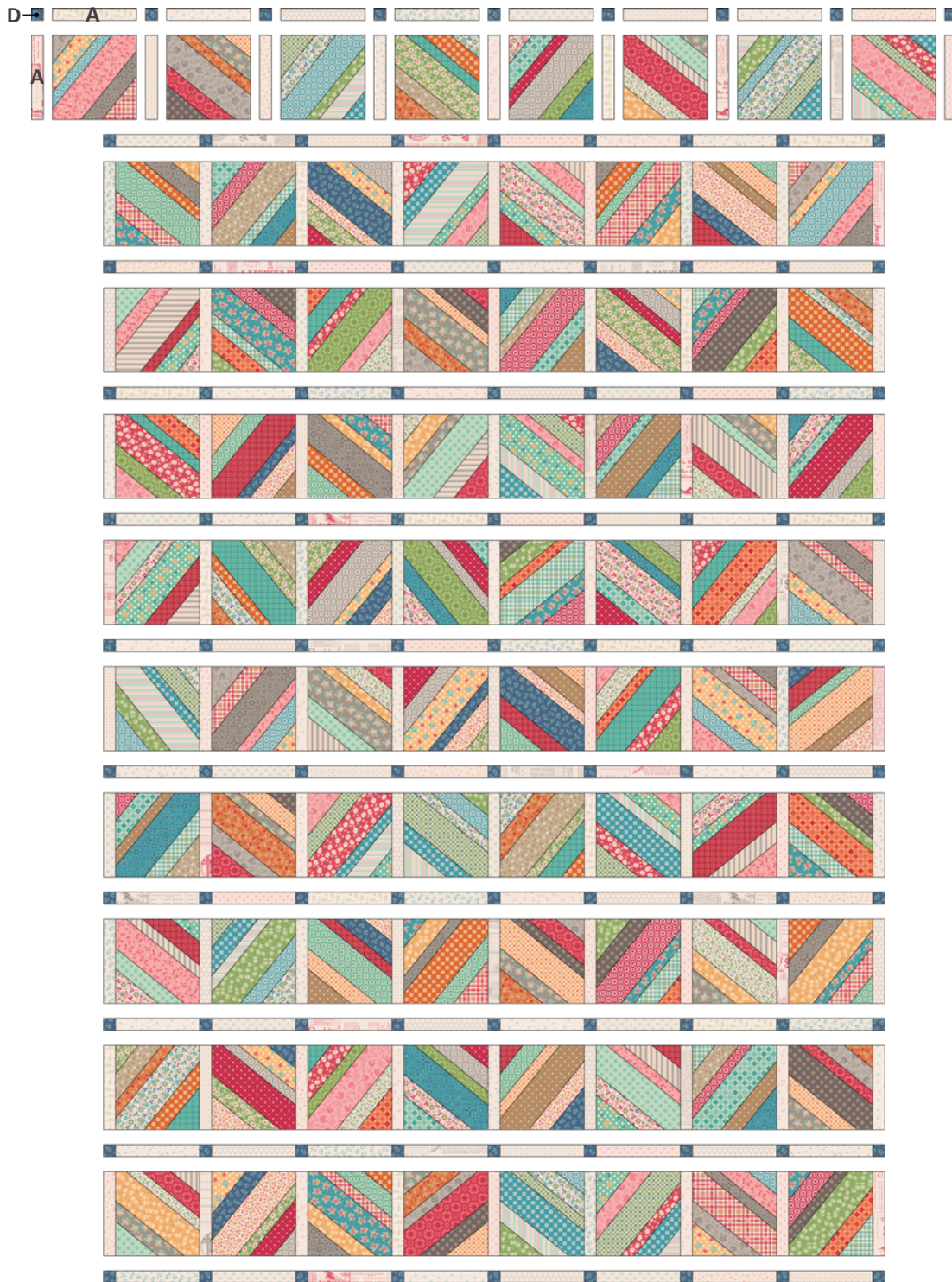


$7\frac{1}{2}$ " \times $7\frac{1}{2}$ "

PAPER STRINGS

QUILT ASSEMBLY

1. Arrange (99) **D**-squares, (178) **A**-rectangles, and (80) blocks as shown below. Turn every other block 90°. Sew the squares, rectangles, and blocks together into rows. Next, sew the rows together to make the quilt center.

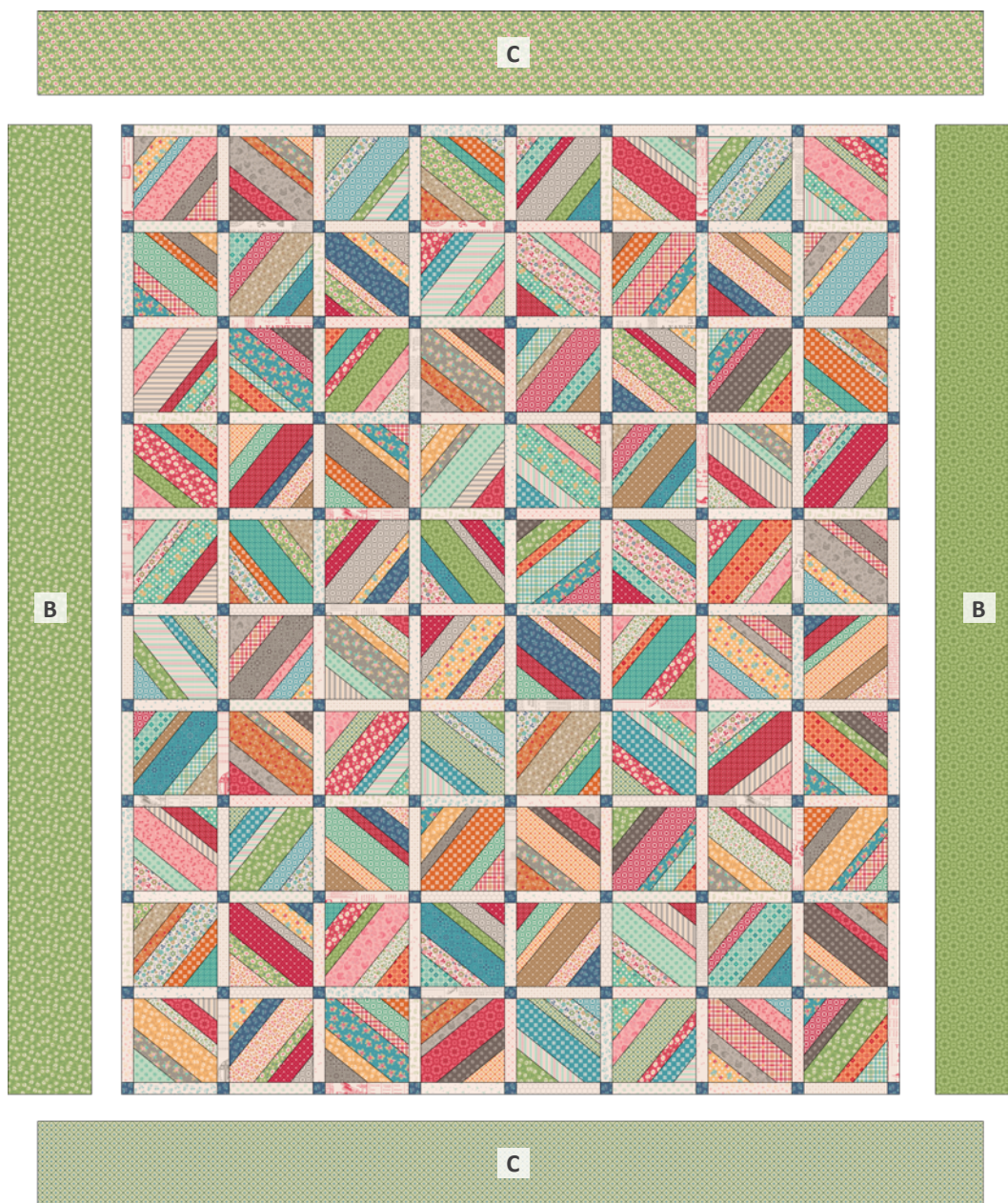


65 1/2" x 81 1/2"

PAPER STRINGS

- Sew (1) **B**-strip to each side of the quilt center as shown below. Next, sew (1) **C**-strip to the top and bottom to complete the quilt top.

QUILT LAYOUT DIAGRAM



79 1/2" x 95 1/2"

FINISHING INSTRUCTIONS

- Layer the quilt top, batting, and backing. Baste the quilt layers together and quilt as desired. Add optional trim and finish with the Denim Vintage binding strips. Note: If using the optional trim, cut (4) pieces of Large Denim Vintage Trim the same length as each side of the quilt. Lay the trim even with the raw edges and baste into place, 1/8" from the raw edge. All of the trim should be on the quilt. Bind using your favorite method. An 1/8" of the trim will show on the top of the quilt after binding.

Enjoy and share your quilt using the hashtags: [#farmersdaughterfabric](#), [#paperstringsquilt](#), [#rileyblakedesigns](#), and [#iloverileyblake](#).