

Farmer's Daughter Quilt Seeds™ Quilt

by Lori Holt of Bee in my Bonnet



Setting Instructions



79 1/2" x 79 1/2"



Farmer's Daughter Quilt Seeds™ Quilt

FINISHED QUILT SIZE 79 ½" × 79 ½"

Please read all instructions before beginning the project.
Yardage is calculated using a 42" usable width of fabric.

WOF = Width of Fabric
RST = Right Sides Together
SNF = Stitch and Flip



Please check www.rileyblakedesigns.com/pattern-updates or scan the QR code for any revisions before starting this project. This pattern requires a basic knowledge of quilting techniques and terminology. The quilt and block diagrams portrayed are virtual images. The layout and look of your project may differ when using actual fabric. It is not recommended to prewash fabric before cutting and assembling.

These instructions are intended to be used in conjunction with all four of Lori Holt's Farmer's Daughter Quilt Seeds™ Patterns, a pattern series featuring four different quilt blocks. Each pattern is a great standalone quilt block, or combine all four to create this quilt or another project of your choosing. Enjoy and share your quilt using the hashtags: [#quiltseeds](#), [#farmersdaughterfabric](#), [#beeinmybonnet](#), [#rileyblakedesigns](#), [#iloverileyblake](#).

FABRIC REQUIREMENTS

Fabric is from the Farmer's Daughter collection.

(1) 5-17160-42 5" Stacker

¼ Yard of Each:

C17168-MILKCAN Clover
C17180-RAINDROP Feedsack Background
C17181-RAINDROP Circles Background
C17182-LEAF Seedling Background
C17183-SAGE Clover Background
C17184-THYME Tractors Background
C17186-RUSTIC Chicken Wire Background
C17187-CORAL Baby Chicks Background
C17188-CORAL Cherries Background
C17189-TEAROSE Chicken Tracks Background

Additional Fabrics:

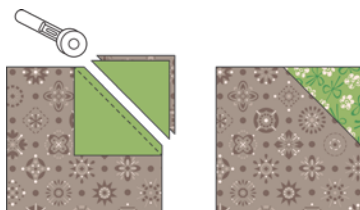
10" square C17185-MAPLE Calico Background
1 ¼ yards C17173-RUSTIC Handmade
1 ¾ yards C17190-RUSTIC Farm Life Background
¾ yard C17178-PEWTER Ticking (binding)

SEWING TECHNIQUES

Sew all seams RST and with a ¼" seam allowance unless stated otherwise. Refer to the Quilt Layout Diagram for placement of the prints. Press seams as desired unless stated otherwise. Dimensions listed in steps are unfinished sizes. Please refer to the following general sewing technique as this method is referenced throughout the pattern in its abbreviated form.

STITCH AND FLIP METHOD (SNF)

Place (2) pieces RST, matching raw edges in the corner to be replaced. Draw a diagonal line on the wrong side of the smaller piece across the corner. Sew on the drawn line. Trim the seam allowance outside the sewn line to ¼". Flip the smaller piece away from the larger piece and press, replacing the corner. The size of the larger, original piece does not change.



ADDITIONAL SUPPLIES

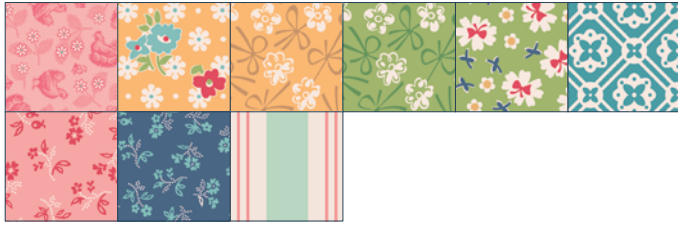
Basic Sewing Supplies
2 ½ yards WB17195-RUSTIC Flower Patch (wide back backing)
Batting
Lori Holt Vintage Trim Large Pebble Wooden Spool (STVT-24573)

Farmer's Daughter Quilt Seeds™ Quilt

CUTTING INSTRUCTIONS

When cutting fabrics, use a straight edge ruler and rotary cutter. Label, allocate, and organize all cuts as noted.

To make the quilt exactly as shown, cut fabrics from the 5" Stacker as shown below.



5" STACKER

From each of (9) 5" squares, cut:

- (3) 2 ½" × 2 ½" squares. Label as A.



5" STACKER

From each of (22) 5" squares, cut:

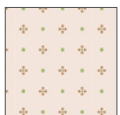
- (2) 2 ½" × 2 ½" squares. Label as A.



5" STACKER

From (1) 5" square, cut:

- (1) 2 ½" × 2 ½" square. Label as A.



MAPLE CALICO BACKGROUND

(C17185-MAPLE)

From (1) 10" square, cut:

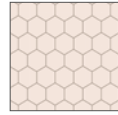
- (4) 2 ½" × 2 ½" squares. Label as B.



MILK CAN CLOVER (C17168-MILKCAN)

Cut (1) 3 ½" × WOF strip. Subcut:

- (9) 3 ½" × 3 ½" squares. Label as C.

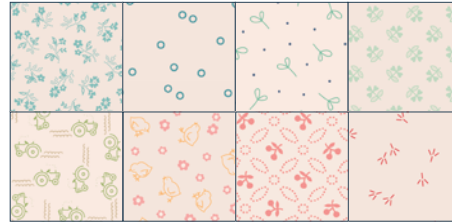


RUSTIC CHICKEN WIRE BACKGROUND

(C17186-RUSTIC)

Cut (1) 2 ½" × WOF strip. Subcut:

- (12) 2 ½" × 3 ½" rectangles. Label as D.



RAINDROP FEEDSACK BACKGROUND

(C17180-RAINDROP), **RAINDROP CIRCLES**

BACKGROUND (C17181-RAINDROP), **LEAF SEEDLING**

BACKGROUND (C17182-LEAF), **SAGE CLOVER**

BACKGROUND (C17183-SAGE), **THYME TRACTORS**

BACKGROUND (C17184-THYME), **CORAL BABY CHICKS**

BACKGROUND (C17187-CORAL), **CORAL CHERRIES**

BACKGROUND (C17188-CORAL), **TEA ROSE CHICKEN**

TRACKS BACKGROUND (C17189-TEAROSE)

From each of (8) ⅓ yard fabrics, cut (1) 2 ½" × WOF strip.

Subcut:

- (1) 2 ½" × 28 ½" rectangle. Label as E.



RUSTIC HANDMADE (C17173-RUSTIC)

Cut (12) 3 ½" × WOF strips. Subcut:

- (12) 3 ½" × 28 ½" rectangles. Label as F.



RUSTIC FARM LIFE BACKGROUND

(C17190-RUSTIC)

Cut (8) 5 ½" × WOF strips. Piece together end-to-end; subcut:

- (2) 5 ½" × 79 ½" strips. Label as G.
- (2) 5 ½" × 69 ½" strips. Label as H.



PEWTER TICKING (C17178-PEWTER)

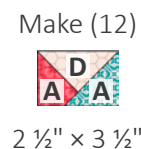
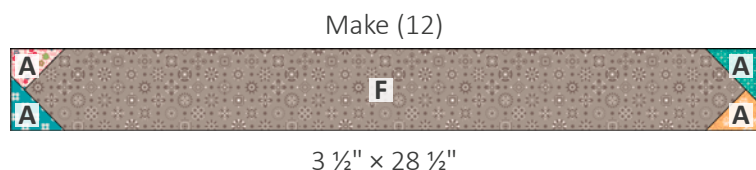
Cut (9) 2 ½" × WOF strips for binding.

Farmer's Daughter Quilt Seeds™ Quilt

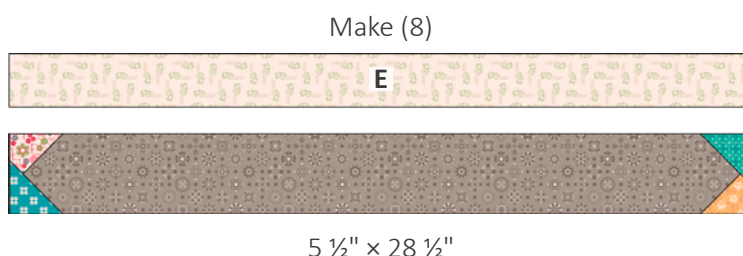
QUILT ASSEMBLY

To make the quilt as shown, use the Quilt Layout Diagram on page 6 for fabric placement of the **A**-squares and **E**-rectangles.

- Gather the required pieces and use the SNF method to make the units shown below, referencing the diagrams for quantity, proper placement, and orientation.



- Sew (1) **E**-rectangle and (1) A/F SNF unit together as shown below to make (1) Long Border Unit. Repeat to make (8) total units.

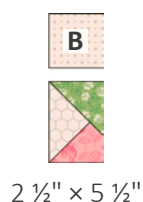


- Sew (1) A/D SNF unit and (1) **C**-square together as shown below to make (1) Short Border Unit. Repeat to make (8) total units.

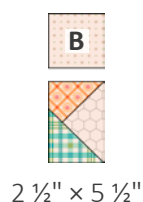


- Sew (1) **B**-square and (1) A/D SNF unit together, rotating SNF units as shown below, to make a total of (2) Left Corner Units and (2) Right Corner Units.

Left Corner Units
Make (2)

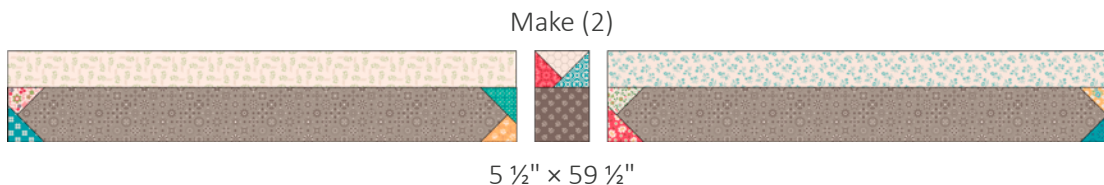


Right Corner Units
Make (2)

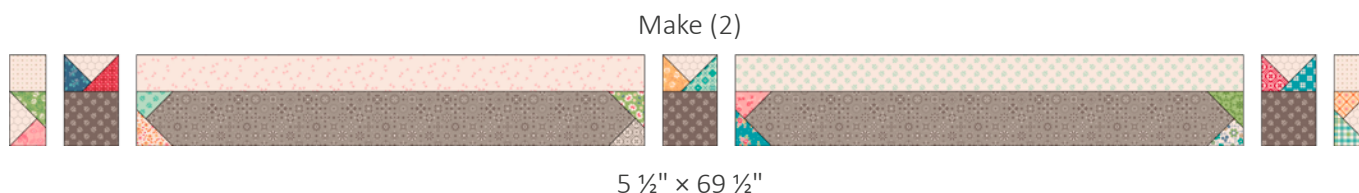


Farmer's Daughter Quilt Seeds™ Quilt

5. Sew (2) Long Border Units and (1) Short Border Unit together as shown below to make (1) Side Border Unit. Repeat to make a second unit.



6. Sew (1) Left Corner Unit, (3) Short Border Units, (2) Long Border Units, and (1) Right Corner Unit together as shown below to make (1) Top Border Unit. Repeat to make (1) Bottom Border Unit.



7. Arrange (4) blocks, (4) A/F SNF units, and (1) C-square as shown below. Sew the blocks, units, and square together into rows. Next, sew the rows together to make the quilt center.



Farmer's Daughter Quilt Seeds™ Quilt

- Sew (1) Side Border Unit to each side of the quilt center as shown below. Next, sew (1) Top/Bottom Border Unit to the top and bottom. Note: The Rustic Handmade print of each border should be sewn to the quilt center. In the same manner, sew **H**-strips to the sides and **G**-strips to the top and bottom to complete the quilt top.

QUILT LAYOUT DIAGRAM



79 1/2" x 79 1/2"

Farmer's Daughter Quilt Seeds™ Quilt

FINISHING INSTRUCTIONS

9. Layer the quilt top, batting, and backing. Baste the quilt layers together and quilt as desired. Add optional trim and finish with the Pewter Ticking binding strips. Note: For optional trim, cut (4) pieces of Large Pebble Vintage Trim the same length as each side of the quilt. Lay the trim even with the raw edges and baste into place, $\frac{1}{8}$ " from the raw edge. All of the trim should be on the quilt. Bind using your favorite method. An $\frac{1}{8}$ " of the trim will show on the top of the quilt after binding.

Enjoy your Quilt Seeds™ Quilt! Share your quilt using the hashtags:
#quiltseeds, #farmersdaughterfabric, #beeinmybonnet, #rileyblakedesigns, #iloverileyblake.



Stay up-to-date on all Lori Holt
happenings and projects:

- 🌐 Visit Lori's Blog at BeInMyBonnetCo.blogspot.com
- 📺 Subscribe to the Lori Holt YouTube channel
- 📷 Follow her on Instagram at [@beelori1](https://www.instagram.com/beelori1)

#quiltseeds, #farmersdaughterfabric, #beeinmybonnet,
#rileyblakedesigns, #iloverileyblake

Farmer's Daughter Quilt Seeds™ by Lori Holt of Bee in my Bonnet

Winter Barn



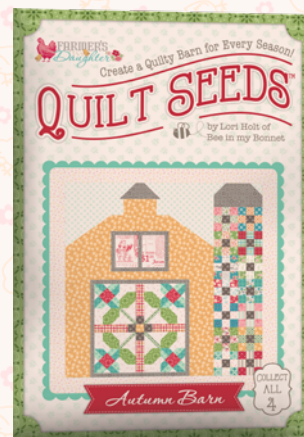
Spring Barn



Summer Barn



Autumn Barn



Farmer's Daughter Quilt Seeds™ Quilt

