

# PIXIE SQUARED

Riley Blake  
DESIGNS®



67" x 78"



= Confident Beginner

03/01/2025

# PIXIE SQUARED

## FINISHED QUILT SIZE 67" × 78"

Please read all instructions before beginning this project.  
Yardage calculated using a 42" usable width of fabric.

Pattern designed by The RBD Designers.

## GENERAL INSTRUCTIONS

Please check [www.rileyblakedesigns.com/pattern-updates](http://www.rileyblakedesigns.com/pattern-updates) or scan the QR Code for any revisions before starting this project. This pattern requires a basic knowledge of quilting techniques and terminology. The quilt and block diagrams portrayed are virtual images. The layout and look of your project may differ when using actual fabric. It is not recommended to prewash fabric before cutting and assembling.



WOF = Width of Fabric  
RST = Right Sides Together

## FABRIC REQUIREMENTS

All fabrics from the Forever Neverland collection unless stated otherwise.

(1) 10-15900-42 10" Stacker

### Additional Fabrics:

1 ½ yards C120-VINTAGEWHITE Confetti Cotton™

1 ¼ yards C15900-PRINCESS Main

¾ yard C15905-PERIWINKLE Pixie Dust (includes binding)



## OTHER SUPPLIES

Basic Sewing Supplies

2 ½ yards WB200-LINEN Shade (wide back backing)

Batting

## CUTTING INSTRUCTIONS

When cutting fabrics, use a straight edge ruler and rotary cutter. Measurements include ¼" seam allowance. Label, allocate, and organize all cuts as noted.



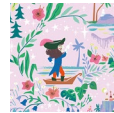
### 10" Stacker

Set (30) 10" × 10" squares aside. Label as A.



### Vintage White Confetti Cotton™

Cut (18) 2" × WOF strips. Subcut:  
(71) 2" × 10" rectangles. Label as B.

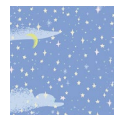


### Princess Main

Cut (7) 5 ½" × WOF strips. Piece together end-to-end; subcut:

(2) 5 ½" × 68" strips. Label as C.

(2) 5 ½" × 67" strips. Label as D.



### Periwinkle Pixie Dust

Cut (8) 2 ½" × WOF strips. Set aside for binding.

Cut (2) 2" × WOF strips. Subcut:

(42) 2" × 2" squares. Label as E.

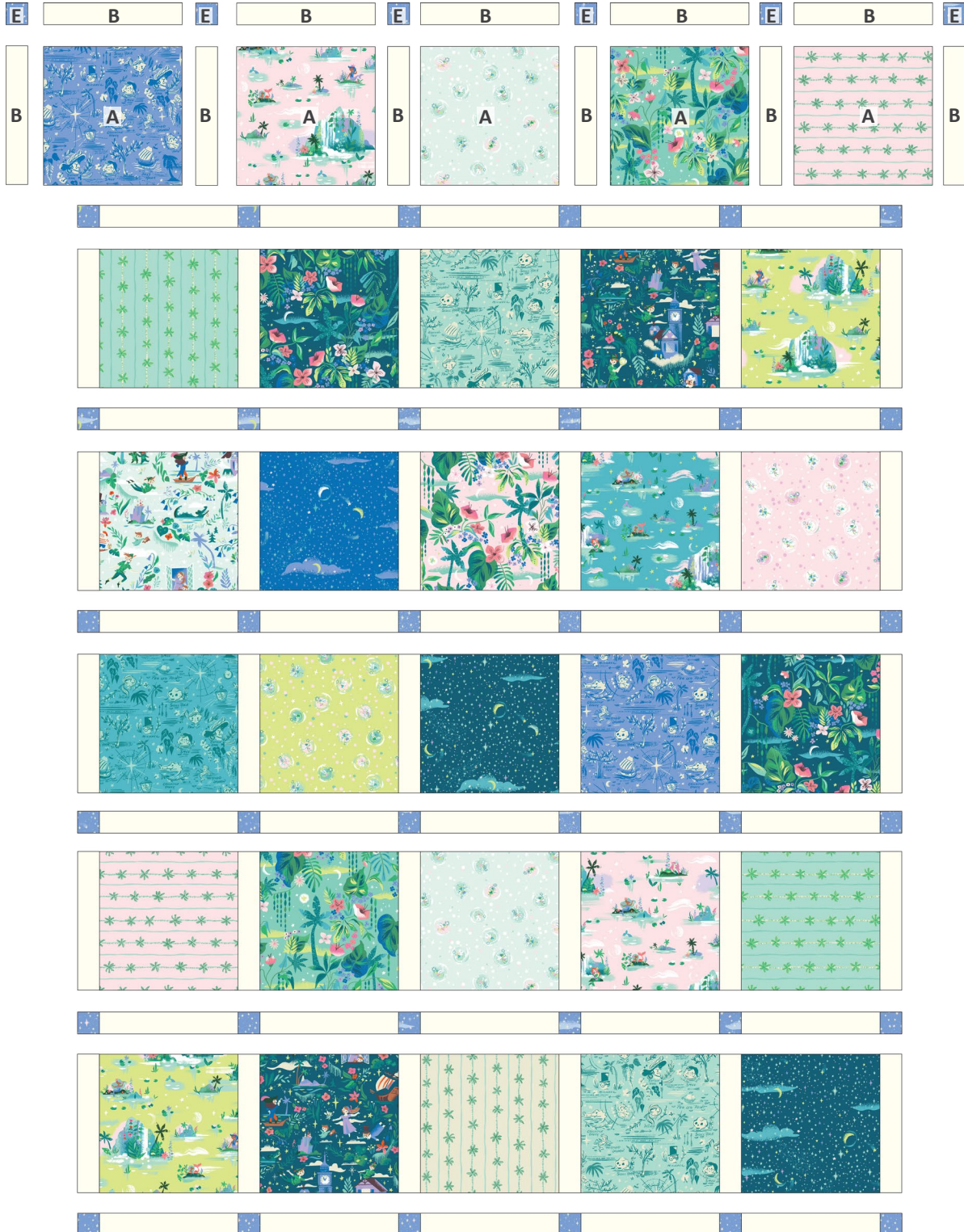
## SEWING TECHNIQUES

Sew all seams RST and with a ¼" seam allowance unless stated otherwise. Refer to the Quilt Layout Diagram for placement of the prints. Press seams as desired unless stated otherwise. Dimensions listed in steps are unfinished sizes.

# PIXIE SQUARED

## QUILT ASSEMBLY

1. Arrange (42) **E**-squares, (71) **B**-rectangles, and (30) **A**-squares as shown below. Sew the pieces together into rows, pressing seams away from the **B**-rectangles. Next, sew the rows together to make the quilt center.

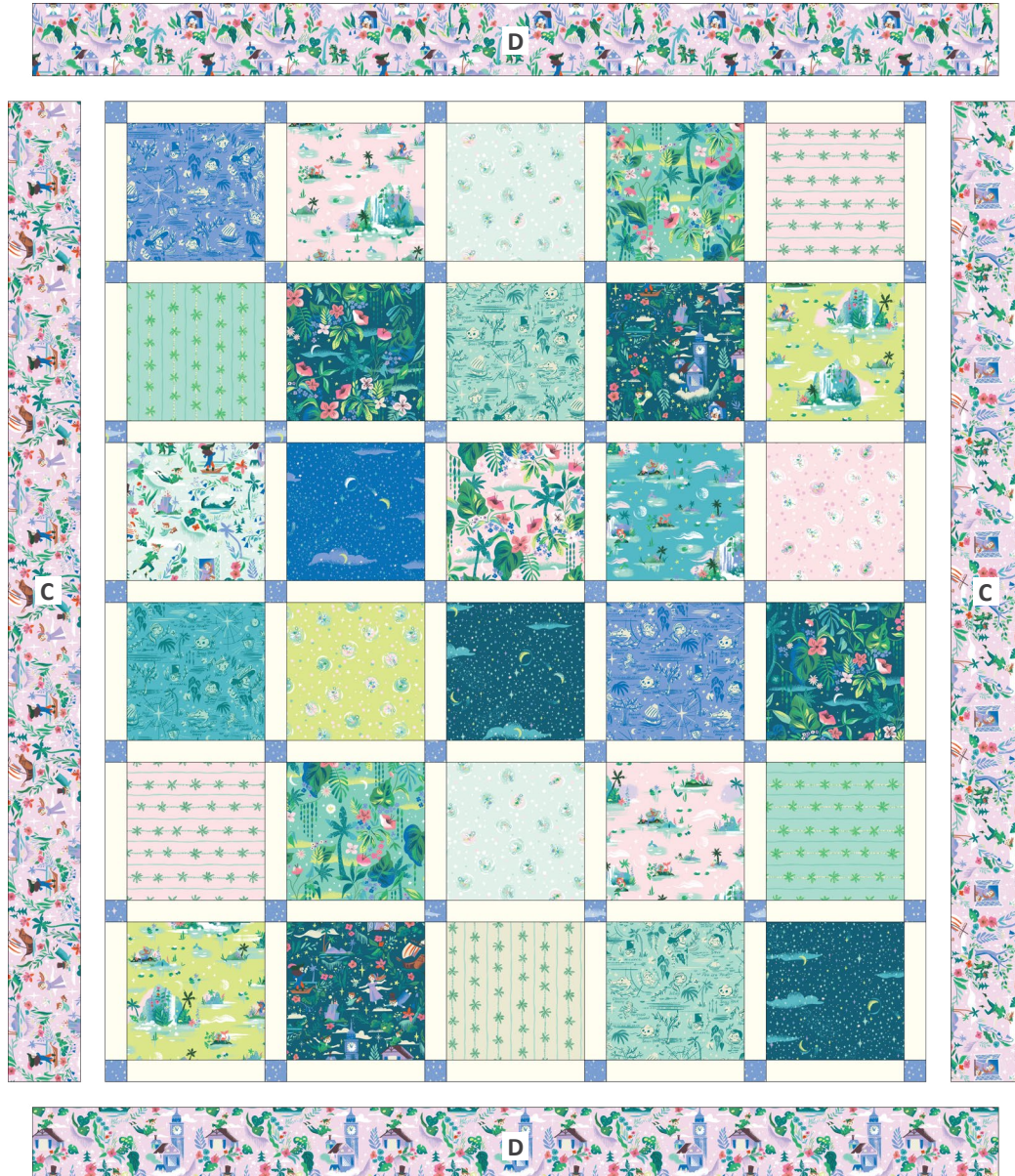


57" x 68"

# PIXIE SQUARED

2. Sew (1) **C**-strip to each side of the quilt center as shown below. Next, sew (1) **D**-strip to the top and bottom to complete the quilt top.

## QUILT LAYOUT DIAGRAM



67" x 78"

## FINISHING INSTRUCTIONS

3. Layer the quilt top, batting, and backing. Baste the quilt layers together and quilt as desired. Sew the Periwinkle Pixie Dust binding strips together end-to-end. Then bind the trimmed, finished quilt using your favorite binding method.

Enjoy and share your quilt using the hashtags: [#foreverneverlandfabric](#), [#pixiesquaredquilt](#), [#rileyblakedesigns](#), and [#iloverileyblake](#).