

GAME NIGHT THROW



The RBD Designers



GAME NIGHT THROW

Finished Quilt Size: 63" x 63"

Measurements include 1/4" seam allowance.

Fabric Needed:

Option 1 (3 Fabrics):

Background: 2 yards

Fabric 1: 1 1/4 yards

Fabric 2: 1 1/4 yards

Option 2 (5 Fabrics):

Background: 2 yards

Fabric 1: 3/4 yard

Fabric 2: 2/3 yard

Fabric 3: 2/3 yard

Fabric 4: 2/3 yard

Cutting Instructions:

Option 1

1. Background

Cut 26 – 2 1/2" strips x width of fabric (WOF).

2. Fabric 1

Cut 7 – 5 1/2" strips x WOF.

3. Fabric 2

Cut 6 – 5 1/2" strips x WOF.

Option 2

1. Background

Cut 26 – 2 1/2" strips x WOF.

2. Fabric 1

Cut 4 – 5 1/2" strips x WOF.

3. Fabric 2

Cut 3 – 5 1/2" strips x WOF.

4. Fabric 3

Cut 3 – 5 1/2" strips x WOF.

5. Fabric 4

Cut 3 – 5 1/2" strips x WOF.

Sewing Instructions:

1. Blocks

Stitch 2 1/2" background fabric strip to both sides of fabric 1 - 5 1/2" strip.

Press to background.

Repeat for all background 2 1/2" strips and 5 1/2" strips.

Cut into the following 9 1/2" segments:

Option 1

Fabric 1: 25

Fabric 2: 24

Option 2:

Fabric 1: 16

Fabric 2: 12

Fabric 3: 12

Fabric 4: 9

2. Construction

Lay out blocks in 7 rows of 7 blocks according to diagram.

Stitch blocks together to make rows.

Press rows in opposite directions.

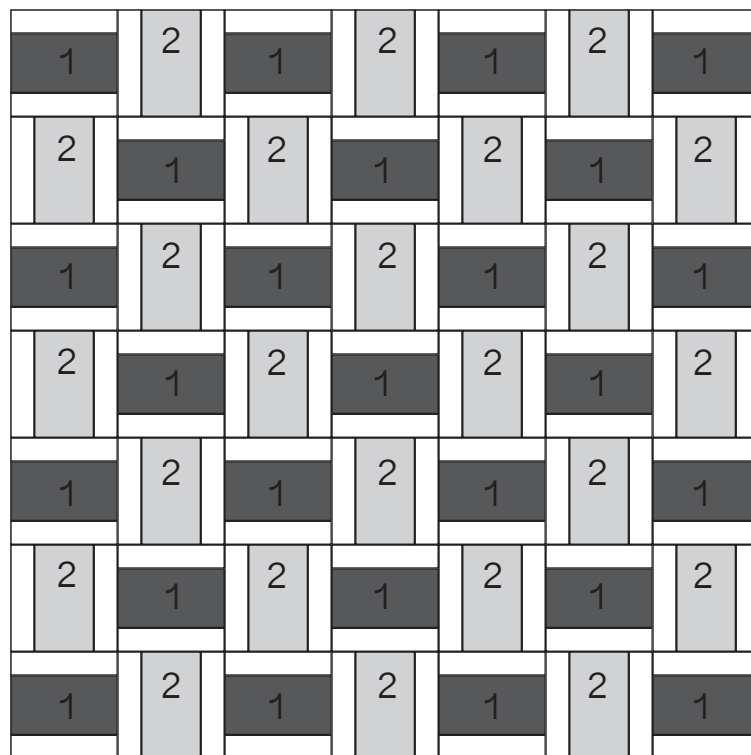
Stitch rows together.

3. School Logo

Add school logo if desired.

4. Quilt and bind.

Option 1 Layout



Option 2 Layout

