

# SUNDOWN IN THE GARDEN



60 1/2" x 72 1/2"

ELEMENTALS

GET IN LINE



10/01/2025



# SUNDOWN IN THE GARDEN

**FINISHED QUILT SIZE 60 ½" × 72 ½"**

Please read all instructions before beginning this project.  
Yardage calculated using a 42" usable width of fabric.

Pattern designed by The RBD Designers.

## GENERAL INSTRUCTIONS

Please check [www.rileyblakedesigns.com/pattern-updates](http://www.rileyblakedesigns.com/pattern-updates) or scan the QR Code for any revisions before starting this project. This pattern requires a basic knowledge of quilting techniques and terminology. The quilt and block diagrams portrayed are virtual images. Due to the hand-crafted nature of batiks, the layout and look of your project may vary from the images. It is not recommended to prewash fabric before cutting and assembling.



WOF = Width of Fabric  
RST = Right Sides Together  
HST = Half Square Triangle  
SNF = Stitch and Flip

## FABRIC REQUIREMENTS

Fabrics are from the Expressions Batiks Get in Line collection unless stated otherwise.

**⅓ Yard of Each:**

BT21300-180 Lavender Blush  
BT21300-184 Lollipop  
BT21300-185 Mountain's Majesty  
BT21300-186 Purple Outburst  
BT21300-187 Masquerade  
BT21300-189 Plum Dressing  
BT21300-242 Salmon Run  
BT21300-243 Coral Fiesta  
BT21300-247 Cinnamon Grove  
BT21300-307 Dark Skies

**Additional Fabrics:**

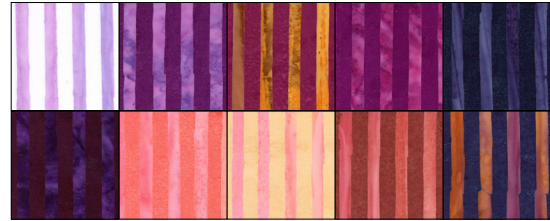
1 yard BT21500-140 Seashell Elementals Color Play Mottled  
1 ⅓ yards BT21900-205 Tulip Time Elementals Twirl & Swirl  
1 ½ yards BT21000-337-15 Soap Bubble Hand-Dyes  
¾ yard BT21300-181 Wisteria Skye (includes binding)

## OTHER SUPPLIES

Basic Sewing Supplies  
2 yards BTWB198 Cloud Hand-Dyes (wide back backing)  
Batting

## CUTTING INSTRUCTIONS

When cutting fabrics, use a straight edge ruler and rotary cutter. Measurements include ¼" seam allowance. Label, allocate, and organize all cuts as noted.



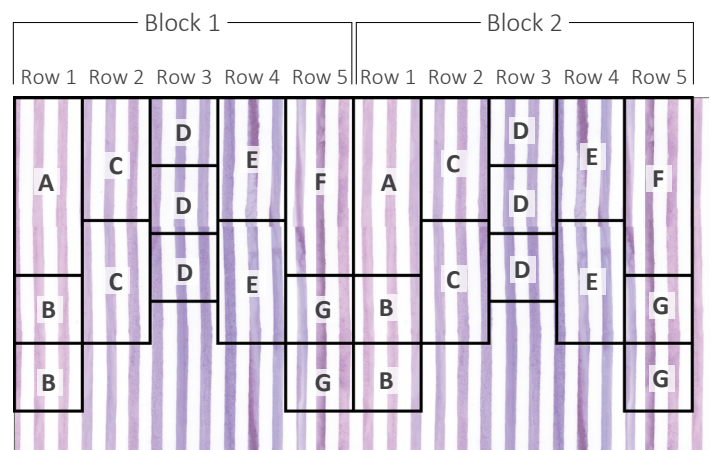
To achieve the overall ombré stripe effect within the blocks of this quilt, fabric must be cut a specific way. Closely follow the cutting guide below for the ⅓ yard pieces.

The fabrics have stripes running vertically with color gradients going horizontally across the WOF. Cut fabrics as shown in the diagram below, paying careful attention to orientation of each piece.

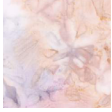
Keep fabrics organized, so the pieces cut within each row stay together for specific placement within the blocks.

**From each ⅓ yard piece, cut (2) sets of:**

- (1) 2 ½" × 6 ½" rectangle. Label as A for Row 1.
- (2) 2 ½" × 2 ½" squares. Label as B for Row 1.
- (2) 2 ½" × 4 ½" rectangles. Label as C for Row 2.
- (3) 2 ½" × 2 ½" squares. Label as D for Row 3.
- (2) 2 ½" × 4 ½" rectangles. Label as E for Row 4.
- (1) 2 ½" × 6 ½" rectangle. Label as F for Row 5.
- (2) 2 ½" × 2 ½" squares. Label as G for Row 5.



# SUNDOWN IN THE GARDEN



## Seashell Elementals Color Play

Cut (13)  $2\frac{1}{2}$ "  $\times$  WOF strips. Subcut:  
(49)  $2\frac{1}{2}$ "  $\times$   $10\frac{1}{2}$ " rectangles. Label as H.



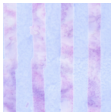
## Tulip Time Elementals Twirl & Swirl

Cut (6)  $5\frac{1}{2}$ "  $\times$  WOF strips. Piece together end-to-end; subcut:  
(2)  $5\frac{1}{2}$ "  $\times$   $62\frac{1}{2}$ " strips. Label as I.  
(2)  $5\frac{1}{2}$ "  $\times$   $60\frac{1}{2}$ " strips. Label as J.



## Soap Bubble Hand-Dyes

Cut (20)  $2\frac{1}{2}$ "  $\times$  WOF strips. Subcut:  
(320)  $2\frac{1}{2}$ "  $\times$   $2\frac{1}{2}$ " squares. Label as K.



## Wisteria Skye

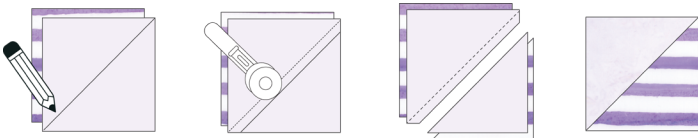
Cut (9)  $2\frac{1}{2}$ "  $\times$  WOF strips. Set (7) aside for binding.  
From remaining (2) strips, subcut:  
(30)  $2\frac{1}{2}$ "  $\times$   $2\frac{1}{2}$ " squares. Label as L.

## SEWING TECHNIQUES

Sew all seams RST and with a  $\frac{1}{4}$ " seam allowance unless stated otherwise. Refer to the Quilt Layout Diagram for placement of the prints. Press seams as desired unless stated otherwise. Dimensions listed in steps are unfinished sizes. Please refer to the following general sewing techniques as these methods are referenced throughout the pattern in their abbreviated form.

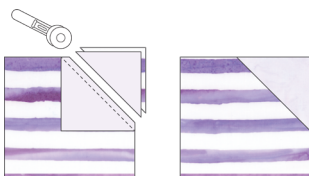
### 1-AT-A-TIME HALF SQUARE TRIANGLE METHOD (HST)

Place (2) squares RST. Draw a diagonal line on the wrong side of (1) square. Sew on the drawn line. Trim the seam allowance outside the sewn line to  $\frac{1}{4}$ ". Press toward the darker fabric.



### STITCH AND FLIP METHOD (SNF)

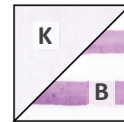
Place (2) pieces RST, matching raw edges in the corner to be replaced. Draw a diagonal line on the wrong side of the smaller piece across the corner. Sew on the drawn line. Trim the seam allowance outside the sewn line to  $\frac{1}{4}$ ". Flip the smaller piece away from the larger piece and press, replacing the corner. The size of the larger, original piece does not change.



## BLOCK ASSEMBLY

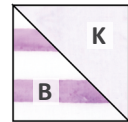
- From one print, gather (1) set of **A-G** pieces. Also gather (16) **K**-squares.
- Use the 1-at-a-time HST method to make the units shown below, referring to the diagrams for quantity, proper placement, and orientation of the stripes.

Make (1)



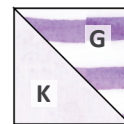
$2\frac{1}{2}$ "  $\times$   $2\frac{1}{2}$ "

Make (1)



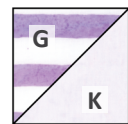
$2\frac{1}{2}$ "  $\times$   $2\frac{1}{2}$ "

Make (1)



$2\frac{1}{2}$ "  $\times$   $2\frac{1}{2}$ "

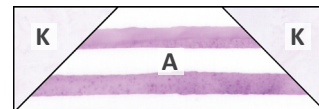
Make (1)



$2\frac{1}{2}$ "  $\times$   $2\frac{1}{2}$ "

- Use the SNF method to make the units shown below, referring to the diagrams for quantity, proper placement, and orientation of the stripes.

Make (1)



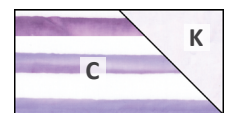
$2\frac{1}{2}$ "  $\times$   $6\frac{1}{2}$ "

Make (1)



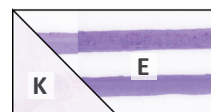
$2\frac{1}{2}$ "  $\times$   $4\frac{1}{2}$ "

Make (1)



$2\frac{1}{2}$ "  $\times$   $4\frac{1}{2}$ "

Make (1)



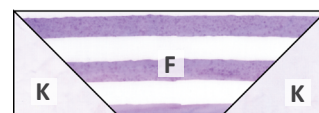
$2\frac{1}{2}$ "  $\times$   $4\frac{1}{2}$ "

Make (1)



$2\frac{1}{2}$ "  $\times$   $4\frac{1}{2}$ "

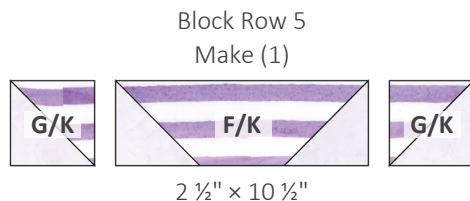
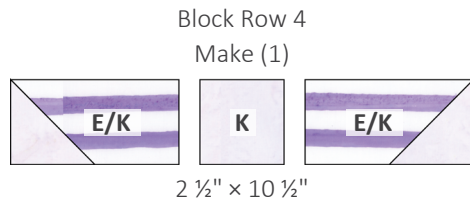
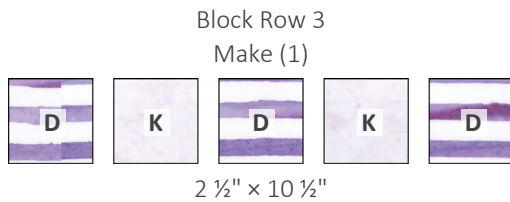
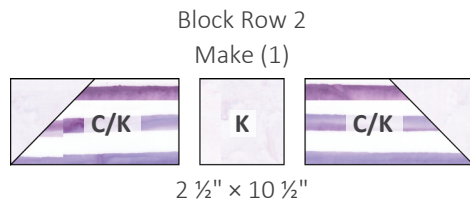
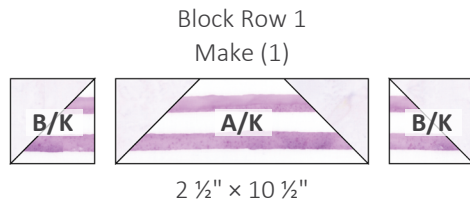
Make (1)



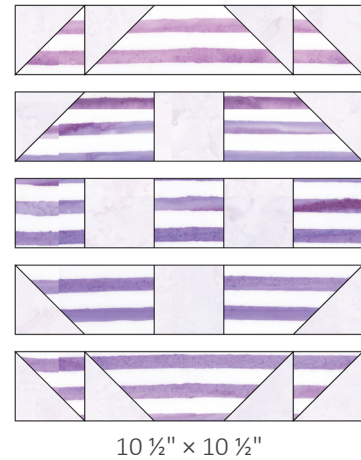
$2\frac{1}{2}$ "  $\times$   $6\frac{1}{2}$ "

# SUNDOWN IN THE GARDEN

4. Gather the required HST units, SNF units, and squares. Sew them together into rows as shown below to make Block Rows 1-5.



5. Sew Block Rows 1-5 together as shown below to make (1) Block.



6. Repeat steps 1-5 to make (20) total blocks.

## QUILT ASSEMBLY

7. Arrange (30) L-squares, (49) H-rectangles, and (20) Blocks as shown below. Arrange blocks from lightest to darkest or as desired. Sew the pieces and blocks together into rows. Next, sew the rows together to make the quilt center.





## SUNDOWN IN THE GARDEN

8. Sew (1) I-strip to each side of the quilt center as shown below. Next, sew (1) J-strip to the top and bottom to complete the quilt top.

### QUILT LAYOUT DIAGRAM



### FINISHING INSTRUCTIONS

9. Layer the quilt top, batting, and backing. Baste the quilt layers together and quilt as desired. Sew the Wisteria Skye binding strips together end-to-end. Then bind the trimmed, finished quilt using your favorite binding method.

Enjoy and share your quilt using the hashtags: [#getinlinefabric](#), [#sundowninthegardenquilt](#), [#rileyblakedesigns](#), and [#iloverileyblake](#).