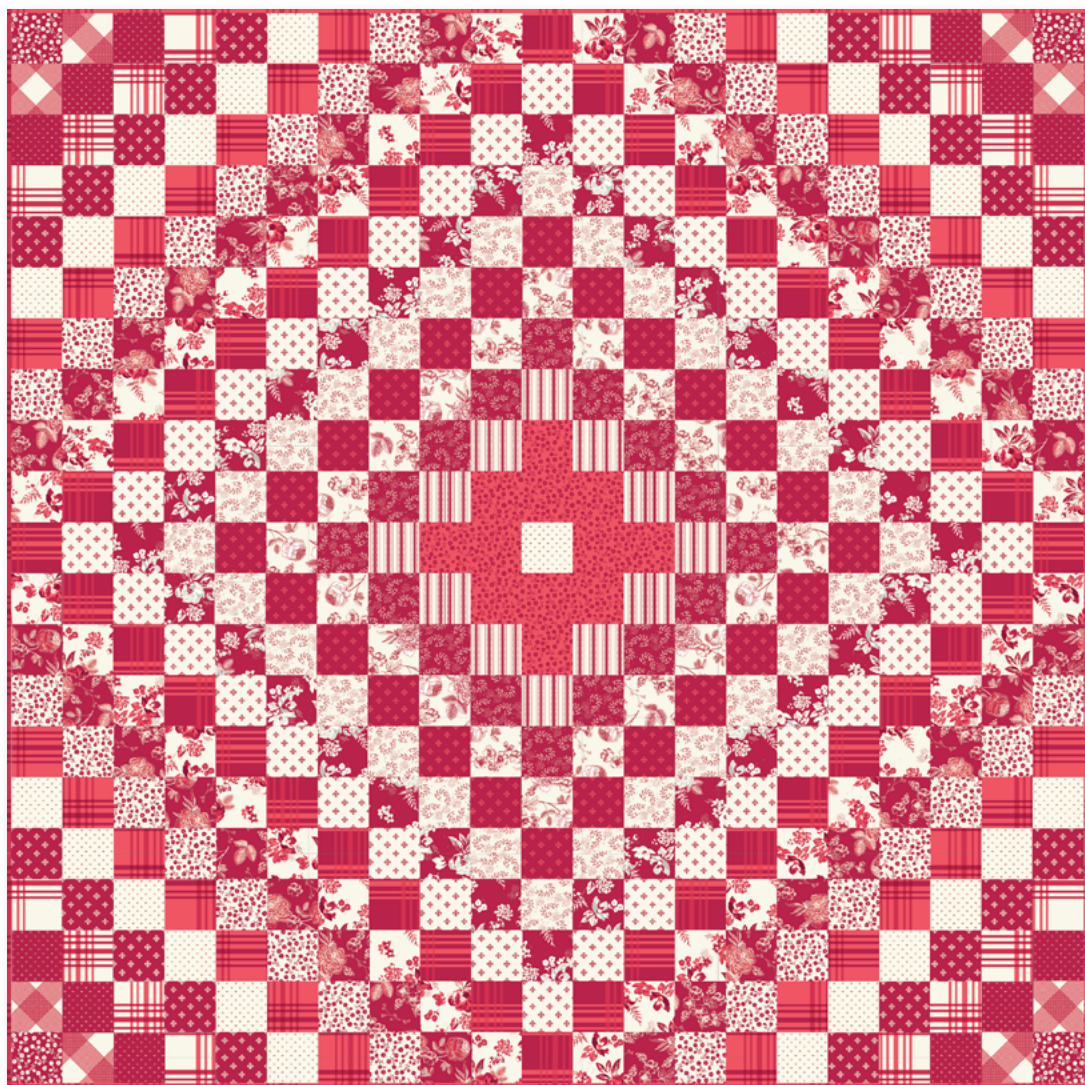


# HEIRLOOM AROUND THE WORLD



63" x 63"



= Beginner

01/01/2024

# HEIRLOOM AROUND THE WORLD

## FINISHED QUILT SIZE 63" × 63"

Please read all instructions before beginning the project.  
Yardage calculated using a 42" usable width of fabric.

Note: Pre-washing fabric may result in shrinkage and possible changes in usable size.

## GENERAL INSTRUCTIONS

Please check our website [www.rileyblakedesigns.com/pattern-updates](http://www.rileyblakedesigns.com/pattern-updates) for any revisions before starting this project. This pattern requires a basic knowledge of quilting techniques and terminology. The projects portrayed are virtual images. The looks of the projects may be different with actual fabric. The project virtual(s) shown may be different than the image shown on the actual cover. Backing yardage is shown using the best use of fabric and may not be intended for directional fabric.

Measurements include 1/4" seam allowance. Sew with RST unless otherwise stated. Refer to the quilt layout diagram for placement of the prints. Press seams as noted in each step for best results. Dimensions listed in steps are unfinished sizes unless stated otherwise.

WOF = Width of Fabric  
RST = Right Sides Together

## FABRIC REQUIREMENTS

All fabrics are from the Heirloom Red collection by My Mind's Eye.

1/8 yard of each

C14346-BERRY Ditsy  
C14343-CREAM Line Plaid

1/4 yard of each

C14347-BERRY Criss Cross  
C14344-CREAM Plaid  
C14342-BERRY Sprigs  
C14348-CREAM Stripe  
C14346-RED Ditsy

3/8 yard of each

C14345-BERRY Fancy Diamonds  
C14347-CREAM Criss Cross  
C14345-RED Fancy Diamonds  
C14341-CREAM Line Floral

1/2 yard of each

C14346-CREAM Ditsy  
C14340-BERRY Main  
C14342-CREAM Sprigs

5/8 yard of each

C14341-BERRY Line Floral  
C14340-CREAM Main  
C14344-RED Plaid  
C14345-CREAM Fancy Diamonds

1 1/8 yards C14344-BERRY Plaid (includes binding)

## OTHER SUPPLIES

2 Yards Wide Back backing fabric (suggested WB645 Beach Dapple Dot Reversed)  
Batting 71" × 71"  
Basic Sewing Supplies

## CUTTING INSTRUCTIONS

Please read all pattern instructions before cutting fabrics. Use a straight edge ruler and rotary cutter to cut your fabrics and label all cuts as noted.



### Berry Ditsy

Cut (1) 3 1/2" × WOF strip; subcut:  
(1) 15" × 3 1/2" strip. Label as A.



### Cream Line Plaid

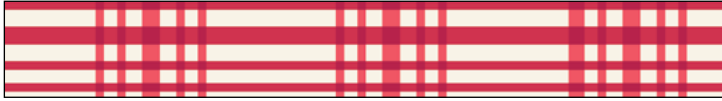
Cut (1) 3 1/2" × WOF strip; subcut:  
(2) 15" × 3 1/2" strips. Label as B.



### Berry Criss Cross

Cut (2) 3 1/2" × WOF strips; subcut:  
(3) 15" × 3 1/2" strips. Label as C.

# HEIRLOOM AROUND THE WORLD



**Cream Plaid**

Cut (2) 3 ½" × WOF strips; subcut:  
(4) 15" × 3 ½" strips. Label as D.



**Berry Fancy Diamonds**

Cut (3) 3 ½" × WOF strips; subcut:  
(5) 15" × 3 ½" strips. Label as E.



**Cream Criss Cross**

Cut (3) 3 ½" × WOF strips; subcut:  
(6) 15" × 3 ½" strips. Label as F.  
(1) 3 ½" × 3 ½" square. Label as U.



**Red Plaid**

Cut (4) 3 ½" × WOF strips; subcut:  
(7) 15" × 3 ½" strips. Label as G.



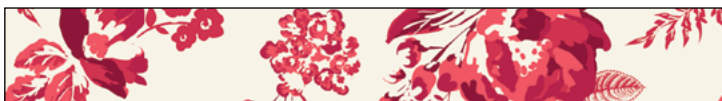
**Cream Ditsy**

Cut (4) 3 ½" × WOF strips; subcut:  
(8) 15" × 3 ½" strips. Label as H.



**Berry Line Floral**

Cut (5) 3 ½" × WOF strips; subcut:  
(9) 15" × 3 ½" strips. Label as I.



**Cream Main**

Cut (5) 3 ½" × WOF strips; subcut:  
(10) 15" × 3 ½" strips. Label as J.



**Berry Plaid**

Cut (5) 3 ½" × WOF strips; subcut:  
(10) 15" × 3 ½" strips. Label as K.  
Cut (7) 2 ½" × WOF strips; set aside for binding.



**Cream Fancy Diamonds**

Cut (5) 3 ½" × WOF strips; subcut:  
(9) 15" × 3 ½" strips. Label as L.



**Berry Main**

Cut (4) 3 ½" × WOF strips; subcut:  
(8) 15" × 3 ½" strips. Label as M.



**Cream Sprigs**

Cut (4) 3 ½" × WOF strips; subcut:  
(7) 15" × 3 ½" strips. Label as N.



**Red Fancy Diamonds**

Cut (3) 3 ½" × WOF strips; subcut:  
(6) 15" × 3 ½" strips. Label as O.



**Cream Line Floral**

Cut (3) 3 ½" × WOF strips; subcut:  
(5) 15" × 3 ½" strips. Label as P.

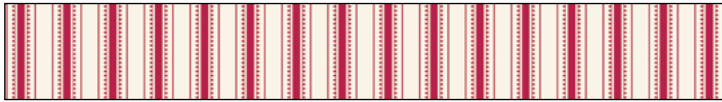


**Berry Sprigs**

Cut (2) 3 ½" × WOF strips; subcut:  
(4) 15" × 3 ½" strips. Label as Q.



# HEIRLOOM AROUND THE WORLD



## Cream Stripe

Cut (2)  $3\frac{1}{2}$ "  $\times$  WOF strips; subcut:

(3)  $15$ "  $\times$   $3\frac{1}{2}$ " strips. Label as R.



## Red Ditsy

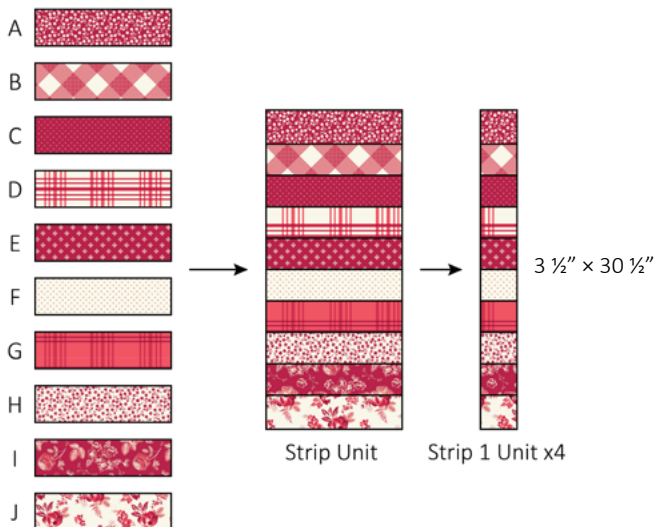
Cut (1)  $6\frac{1}{2}$ "  $\times$  WOF strip; subcut:

(1)  $15$ "  $\times$   $3\frac{1}{2}$ " strip. Label as S.

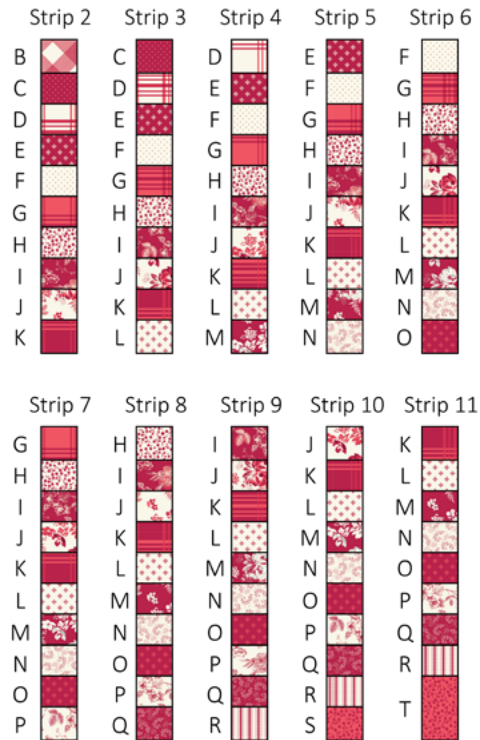
(1)  $15$ "  $\times$   $6\frac{1}{2}$ " strip. Label as T.

## QUILT ASSEMBLY

- Following the diagram below, arrange (1) strip each of piece A, B, C, D, E, F, G, H, I, and J. Using a scant  $\frac{1}{4}$ " seam, sew strips together lengthwise. Press seams to the left.. Strip set should measure  $15$ "  $\times$   $30\frac{1}{2}$ ".
- Subcut the strip set into (4)  $3\frac{1}{2}$ " wide segments, to create the Strip 1 Units.



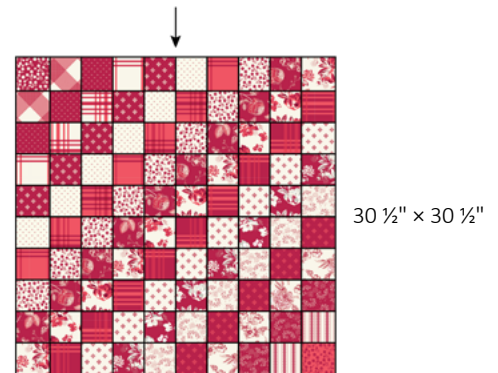
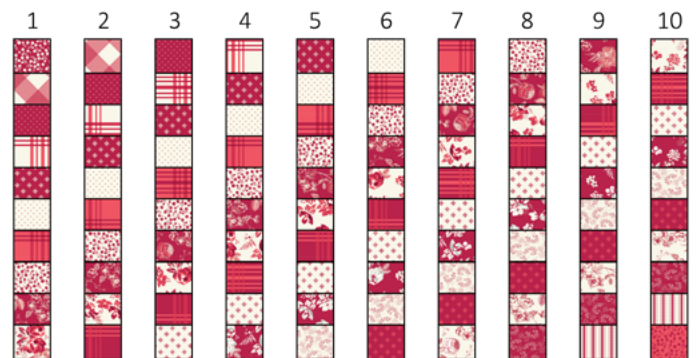
- Repeat step 1 using (1)  $3\frac{1}{2}$ "  $\times$   $15$ " strip of each of the fabrics indicated in the diagram at the top right. *Pay close attention to the order of fabrics in each strip unit.* Press odd numbered row seams to the left. Press even numbered row seams to the right. Press Strip 11 seams open. Each strip set should measure  $15$ "  $\times$   $30\frac{1}{2}$ ".
- Repeat step 2 for each strip set. Make (4) total of each Strip 2-11 Units, as indicated in the diagram at the top right.



x4 for each Strip Unit

- Following the diagram below, from left to right, arrange (1) each of the Strip 1-10 Units. *Note the orientation of each strip unit.* Sew strips together. Press seams open. Corner Unit should measure  $30\frac{1}{2}$ "  $\times$   $30\frac{1}{2}$ ". Repeat to make (4) total Corner Units.

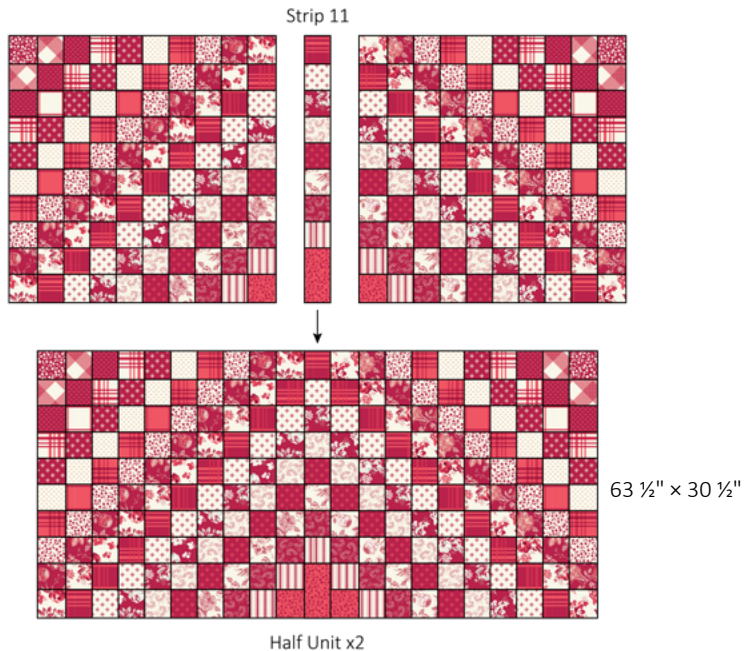
Strips from L to R:



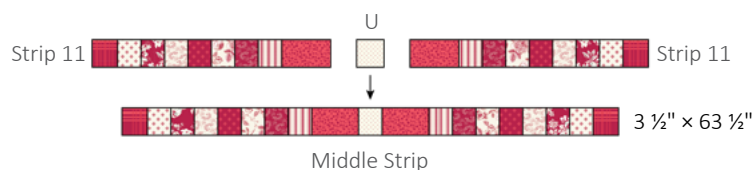
Corner Unit x4

# HEIRLOOM AROUND THE WORLD

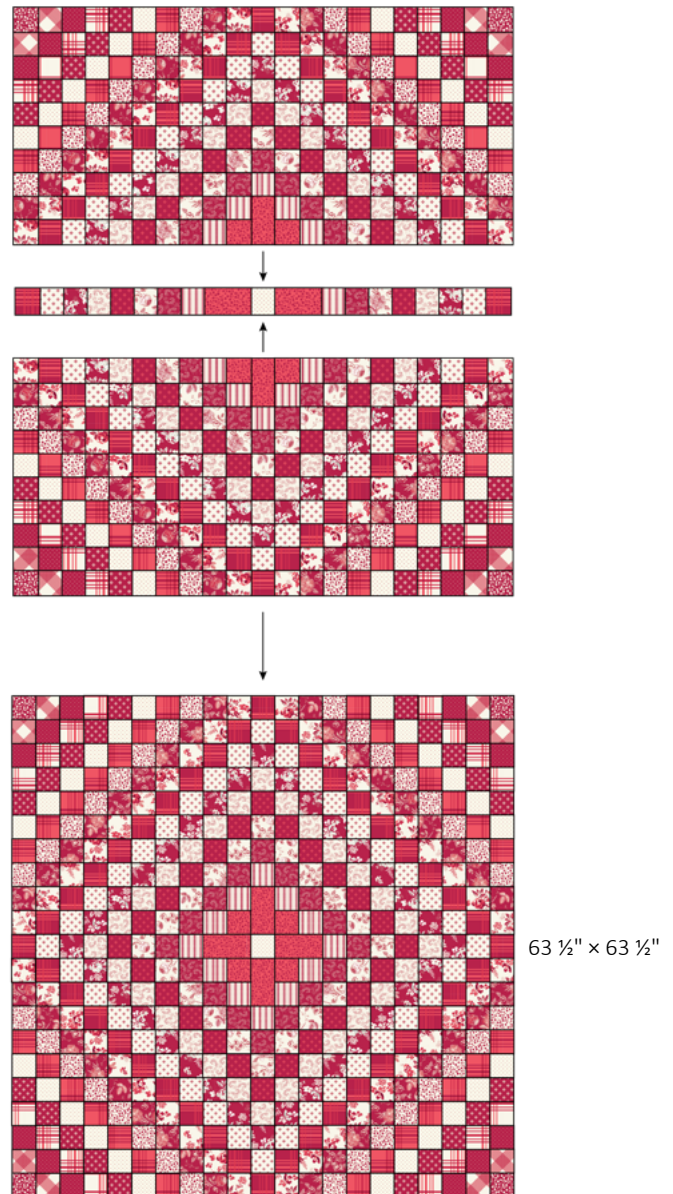
6. Take (2) Corner Units and sew on each long side of (1) Strip 11 Unit. *Note the orientation of each unit.* Press seams open. Half Unit should measure  $30\frac{1}{2}" \times 63\frac{1}{2}"$ . Repeat to make (2) total Half Units.



7. Take (2) Strip 11 Units and sew on each side of (1) U square. *Note the orientation of each unit.* Press seams open. Middle Strip should measure  $3\frac{1}{2}" \times 63\frac{1}{2}"$ .



8. Take (2) Half Units and sew on each side of (1) Middle Strip. *Note the orientation of each Half Unit.* Press seams open. Quilt Top should measure  $63\frac{1}{2}" \times 63\frac{1}{2}"$ .



## FINISHING INSTRUCTIONS

Finish your quilt by layering the quilt top, batting, and backing. Baste quilt layers together and quilt as desired. Sew the Berry Plaid binding strips together end-to-end. Then bind the trimmed, finished quilt using your favorite binding method.

Enjoy and share your quilt using the hashtags [#heirloomredfabric](#), [#heirloomaroundtheworldquilt](#), [#rileyblakedesigns](#), and [#iloverileyblake](#).



# HEIRLOOM AROUND THE WORLD

## QUILT LAYOUT DIAGRAM

63" × 63"

