

Playground


Riley Blake
DESIGNS

October Afternoon



Playground

FINISHED QUILT SIZE 56" x 66"

Finished Block Size 10" x 10"

Measurements include ¼" seam allowance.

Sew with right sides together unless otherwise stated.

Please check our website www.rileyblakedesigns.com for any revisions before starting this project. This pattern requires a basic knowledge of quilting technique and terminology. The quilt and block diagrams portrayed are virtual images. The layout and look of your project may differ when using actual fabric.

FABRIC REQUIREMENTS

1¼ yards (1.1 m) pink main (C3480 Pink)
½ yard (10 cm) teal main (C3480 Teal)
¼ yard (20 cm) pink floral (C3481 Pink)
¼ yard (10 cm) teal floral (C3481 Teal)
¼ yard (10 cm) yellow floral (C3481 Yellow)
¼ yard (10 cm) cream small floral (C3482 Cream)
¼ yard (20 cm) red small floral (C3482 Red)
¼ yard (10 cm) teal small floral (C3482 Teal)
¼ yard (10 cm) blue marbles (C3483 Blue)
¼ yard (10 cm) pink marbles (C3483 Pink)
¼ yard (10 cm) teal hopscotch (C3484 Teal)
¼ yard (10 cm) yellow hopscotch (C3484 Yellow)
¾ yard (60 cm) green geometric (C3485 Green)
¼ yard (10 cm) pink geometric (C3485 Pink)
¼ yard (10 cm) teal geometric (C3485 Teal)
¼ yard (10 cm) blue starburst (C3486 Blue)
¼ yard (10 cm) red starburst (C3486 Red)
¼ yard (10 cm) teal starburst (C3486 Teal)
1½ yards (1 m) vintage white solid (C100-04 Vintage White)
Binding ¾ yard (60 cm)
Backing 3½ yards (3.2 m)

CUTTING REQUIREMENTS

Please read instructions first before cutting. Seam allowances vary so measure through the center of the quilt before cutting border pieces.

Sidewalk Block

Cut rectangles 2½" x 10½" in the corresponding number from the following assorted prints:

3-teal main, 6-pink floral, 3-teal floral, 3-yellow floral
3-cream small floral, 6-red small floral, 3-teal small floral
3-blue marbles, 3-pink marbles, 3-teal hopscotch
3-yellow hopscotch, 6-green geometric, 3-teal geometric
3-pink geometric, 3-blue starburst, 3-red starburst
3-teal starburst, 40-vintage white solid

Border 1

Cut 5 strips 2½" x WOF from green geometric

Border 2

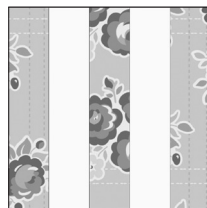
Cut 6 strips 6½" x WOF from pink main

QUILT ASSEMBLY

Refer to quilt photo for placement of fabrics.

Sidewalk Block

Sew 3 assorted print 2½" x 10½" rectangles and 2 vintage white 2½" x 10½" rectangles together to create the Sidewalk Block. Repeat to create 20 Sidewalk Blocks.



Sidewalk Block

Quilt Center Assembly

Refer to quilt photo for placement of Sidewalk Blocks. Lay out blocks in 5 rows of 4 blocks. Sew rows together to complete the center of the quilt.

Borders

Seam allowances vary so measure through the center of the quilt before cutting border pieces. Sew border strips together end to end if necessary to get the length needed. Sew side borders first.

Border 1

Side borders should be 50½". Top and bottom borders should be 44½".

Border 2

Side borders should be 54½". Top and bottom borders should be 56½".

Finish quilt by layering the quilt top, batting, and back. Bind with your favorite Riley Blake fabric from the Sidewalks Collection. Have fun with your colors and enjoy the journey of making your quilt.