

WIDE OPEN SPACES PANEL QUILT


Riley Blake
DESIGNS®



59 1/2" x 65 1/2"


WILD HORSES
BY RBDDesigners

 = Confident Beginner

11/01/2024

WIDE OPEN SPACES PANEL QUILT

FINISHED QUILT SIZE 59 ½" × 65 ½"

Please read all instructions before beginning this project.
Yardage calculated using a 42" usable width of fabric.

GENERAL INSTRUCTIONS

Please check www.rileyblakedesigns.com/pattern-updates for any revisions before starting this project. This pattern requires a basic knowledge of quilting techniques and terminology. The quilt and block diagrams portrayed are virtual images. The layout and look of your project may differ when using actual fabric. It is not recommended to prewash fabric before cutting and assembling.



Always verify your panel size before beginning. If your panel measurements differ from those given in the pattern, trim to the desired size or use coping strips to alter the size of your panel. If coping strips are needed, add oversized, coordinating strips of fabric to the necessary edges of the panel, then trim to the size specified in the pattern.

WOF = Width of Fabric

RST = Right Sides Together

SNF = Stitch and Flip

FABRIC REQUIREMENTS

All fabrics from the Wild Horses collection unless stated otherwise.

- (1) PD15531-OPEN Open Country Panel
- ⅛ yard C15491-CREAM Cowboy
- ⅛ yard C15498-CREAM Circle Stars
- ¼ yard C15493-TEAL Bandana
- ⅜ yard C15491-KHAKI Cowboy
- ½ yard C15494-OCBRE Stripes
- 1 ½ yards C805-STONE POParazzi
- ⅜ yard C15493-BROWN Bandana (includes binding)

OTHER SUPPLIES

- Basic Sewing Supplies
- 1 ⅞ yards WB6420-HONEY Bandana Wide Back Backing
- Batting

CUTTING INSTRUCTIONS

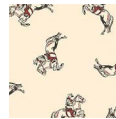
When cutting fabrics, use a straight edge ruler and rotary cutter. Measurements include ¼" seam allowance. Label, allocate, and organize all cuts as noted.



Open Country Panel

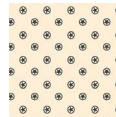
Fussy cut (1) Panel 33 ½" × 41 ½", centered over the motif as shown.*

**Note: If the panel motif does not reach the edge of the required cut, add coping strips first and then trim to the required size once the strips are added.*



Cream Cowboy

Cut (1) 3 ½" × WOF strip; subcut:
(4) 3 ½" × 3 ½" squares. Label as A.



Cream Circle Stars

Cut (1) 3 ½" × WOF strip; subcut:
(4) 3 ½" × 3 ½" squares. Label as B.



Teal Bandana

Cut (2) 2" × WOF strips; subcut:
(32) 2" × 2" squares. Label as C.



Khaki Cowboy

Cut (2) 5 ½" × WOF strips; subcut:
(2) 5 ½" × 41 ½" rectangles. Label as D.



Ochre Stripes

Cut (4) 3 ½" × WOF strips; subcut:
(4) 3 ½" × 19 ½" rectangles. Label as E.
(4) 3 ½" × 16 ½" rectangles. Label as F.



Stone POParazzi

Cut (13) 3 ½" × WOF strips; subcut:
(8) 3 ½" × 19 ½" rectangles. Label as G.
(8) 3 ½" × 16 ½" rectangles. Label as H.
(64) 3 ½" × 3 ½" squares. Label as I.
Cut (2) 2 ½" × WOF strips; subcut:
(2) 2 ½" × 41 ½" rectangles. Label as J.

WIDE OPEN SPACES PANEL QUILT



Brown Bandana

Cut (7) 2 1/2" x WOF strips. Set aside for binding.

Cut (2) 2" x WOF strips; subcut:

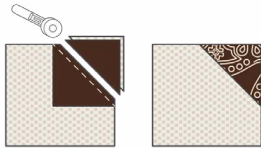
(32) 2" x 2" squares. Label as K.

SEWING TECHNIQUES

Sew all seams RST and with a 1/4" seam allowance unless stated otherwise. Refer to the quilt layout diagram for placement of the prints. Press seams as desired unless stated otherwise. Dimensions listed in steps are unfinished sizes. Please refer to the following general sewing technique as this method is referenced throughout the pattern in its abbreviated form.

STITCH AND FLIP METHOD (SNF)

Place (2) pieces RST, matching raw edges in the corner to be replaced. Draw a diagonal line on the wrong side of the smaller piece across the corner. Stitch on the drawn line. Trim the seam allowance above the sewn line to 1/4". Flip the small piece away from the bottom piece and press, replacing the corner. The size of the larger, original piece does not change.



BLOCK ASSEMBLY

1. Gather the required pieces and use the SNF method to make the units shown below, referencing the diagrams for quantity, proper placement, and orientation.

Make (16)



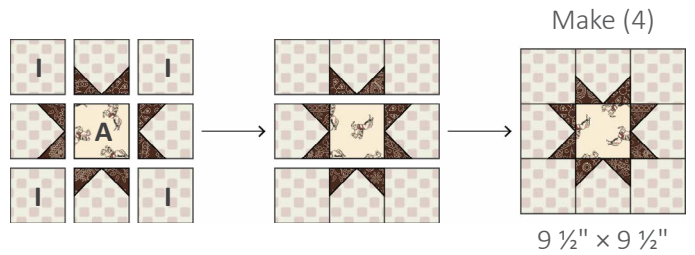
3 1/2" x 3 1/2"

Make (16)

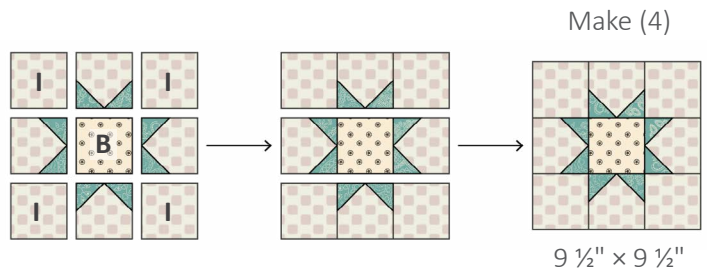


3 1/2" x 3 1/2"

2. Arrange (4) required SNF units, (4) **I**-squares, and (1) **A**-square as shown below. Sew the units and pieces together into rows. Next, sew the rows together to make (1) Brown Star Block. Repeat to make (4) total blocks.

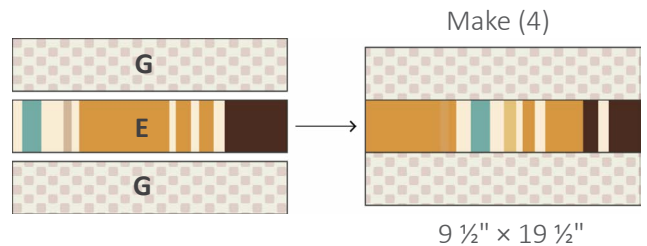


3. Arrange (4) required SNF units, (4) **I**-squares, and (1) **B**-square as shown below. Sew the units and pieces together into rows. Next, sew the rows together to make (1) Teal Star Block. Repeat to make (4) total blocks.

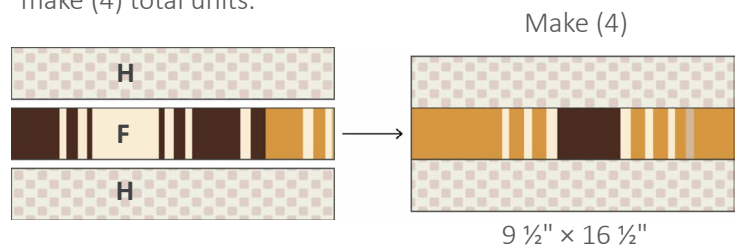


QUILT ASSEMBLY

4. Sew (2) **G**-rectangles and (1) **E**-rectangle together as shown below to make (1) Side Border Unit. Repeat to make (4) total units.

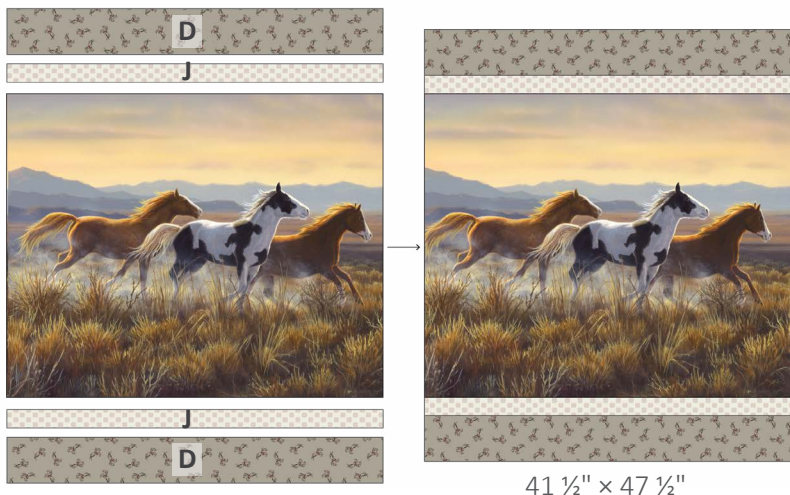


5. Sew (2) **H**-rectangles and (1) **F**-rectangle together as shown below to make (1) Top/Bottom Border Unit. Repeat to make (4) total units.

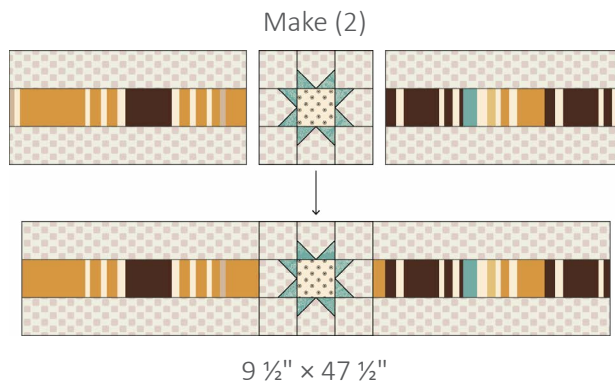


WIDE OPEN SPACES PANEL QUILT

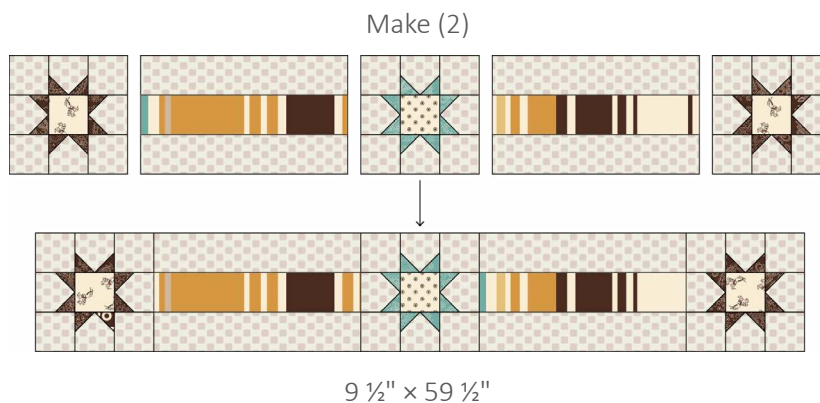
6. Sew (2) **D**-rectangles, (2) **J**-rectangles, and (1) Panel together as shown below to make the quilt center.



7. Sew (2) Side Border Units and (1) Teal Star Block together as shown below to make (1) Side Border. Repeat to make (2) total borders.



8. Sew (2) Brown Star Blocks, (2) Top/Bottom Border Units, and (1) Teal Star Block together as shown below to make (1) Top/Bottom Border. Repeat to make (2) total borders.



WIDE OPEN SPACES PANEL QUILT

9. Sew (1) Side Border to each side of the quilt center. Next, sew (1) Top/Bottom Border to the top and bottom of the quilt center to complete the quilt top.

QUILT LAYOUT DIAGRAM



$59 \frac{1}{2}'' \times 65 \frac{1}{2}''$

FINISHING INSTRUCTIONS

10. Finish your quilt by layering the quilt top, batting, and backing. Baste the quilt layers together and quilt as desired. Sew the Brown Bandana binding strips together end-to-end. Then bind the trimmed, finished quilt using your favorite binding method.

Enjoy and share your quilt using the hashtags [#wildhorsesfabric](#), [#wideopenspacesquilt](#), [#rileyblakedesigns](#), and [#iloverileyblake](#).