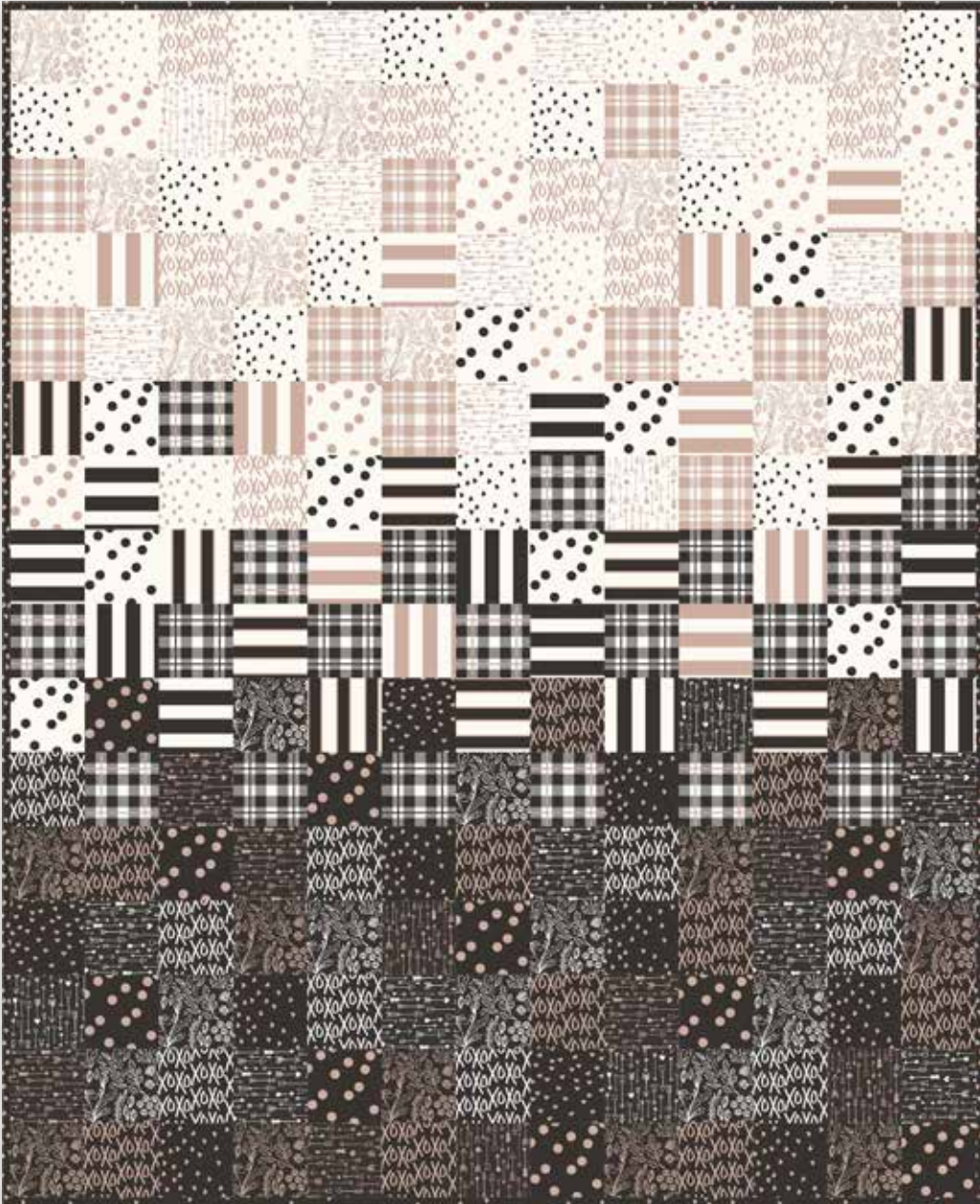




Riley Blake
DESIGNS

SIMPLY SPARKLE



yes, PLEASE
BY JEN ALLYSON *My Mind's Eye*

SIMPLY SPARKLE

FINISHED QUILT SIZE 58½" x 72"

Finished Block Size 4½" x 4½"

Measurements include ¼" seam allowance.

Sew with right sides together unless otherwise stated.

Please check our website www.rileyblakedesigns.com for any revisions before starting this project. This pattern requires a basic knowledge of quilting technique and terminology. The quilt and block diagrams portrayed are virtual images. The layout and look of your project may differ when using actual fabric.

FABRIC REQUIREMENTS

5 Yes, Please 5-Inch Stackers (5-6550-42)

Binding ⅝ yard (60 cm)

QUILT CENTER ASSEMBLY

Lay out the 5" squares in 16 rows of 13 squares (2 squares will not be used). Sew the rows together to complete the center of the quilt.

Finish quilt by layering the quilt top, batting, and back. Bind with your favorite Riley Blake fabric from the Yes, Please Collection. Have fun with your colors and enjoy the journey of making your quilt.