







@gervaisandy

Adel in Autumn will have you craving pumpkin spice any time of year! Warm earthy tones of green, brown, orange and yellow will conjure the falling leaves, pumpkins, acorns and plaids that fill this beautiful collection. And don't miss the lovely floral wide back in three colorways.

Sandy Gervais



Riley Blake
DESIGNS

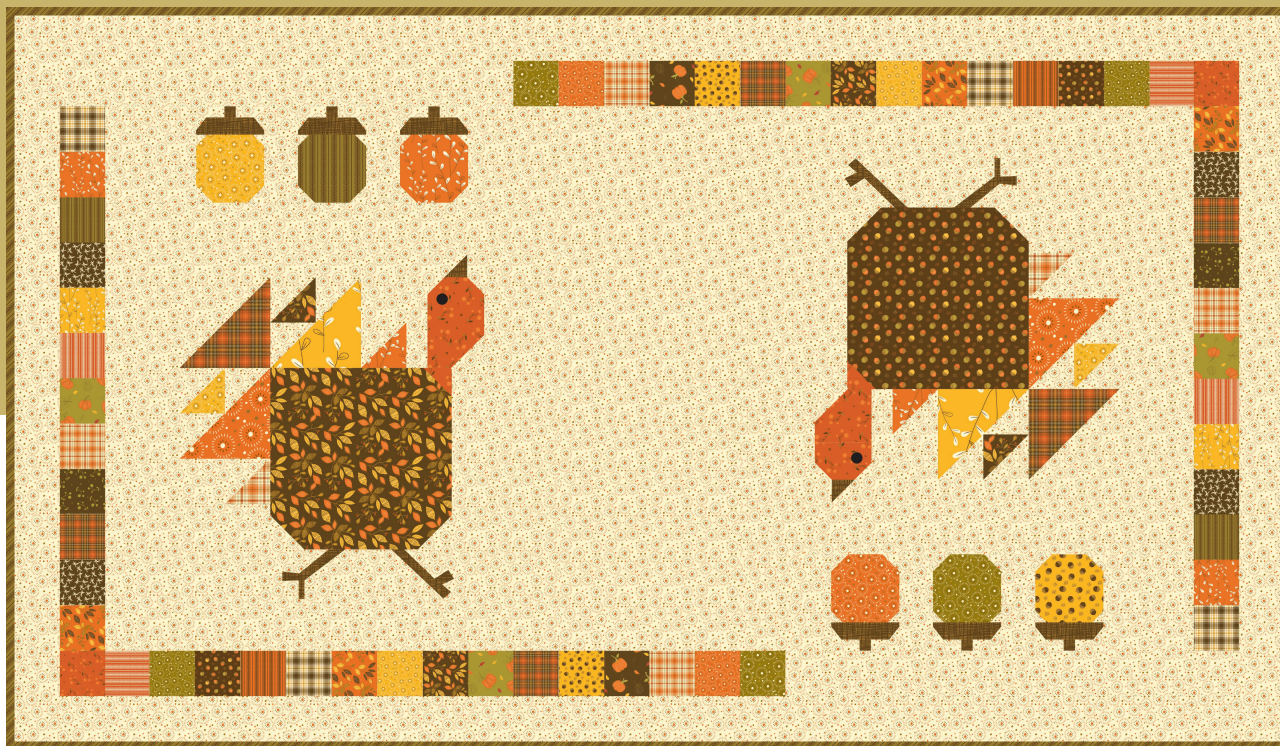


loveliness quilt

by **Sandy Gervais**

Quilt Size: 72" x 72"

Pattern Available at piecesfrommyheart.net



the sky is falling table runner

by **Sandy Gervais**

Quilt Size: 32" x 56"

Pattern Available at piecesfrommyheart.net

oven mitt and pot holder

Free Tutorial Available
at allpeoplequilt.com



wiksten tova top

Pattern Available at textillia.com

potluck pals

Pattern Available at byannie.com





Cream Main
C10820



Chocolate Main
C10820



Olive Main
C10820



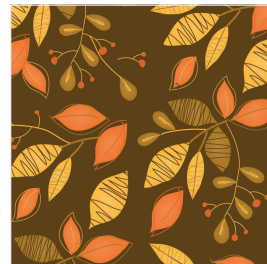
Chocolate Pumpkins
C10821



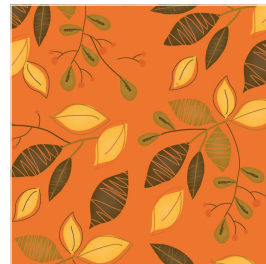
Cream Pumpkins
C10821



Olive Pumpkins
C10821



Chocolate Leaves
C10822



Orange Leaves
C10822



Cream Leaves
C10822



Persimmon Berries
C10823



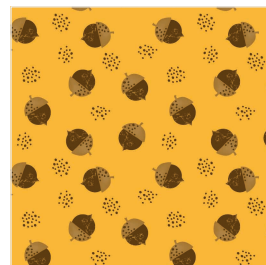
Cream Berries
C10823



Chocolate Berries
C10823



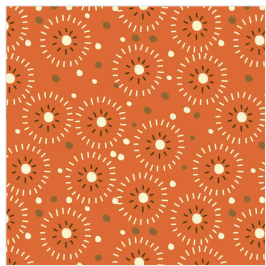
Chocolate Acorns
C10824



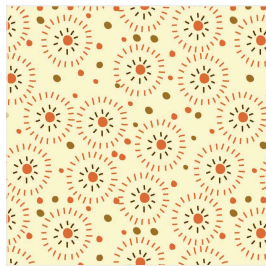
Gold Acorns
C10824



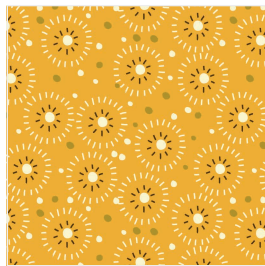
Cream Acorns
C10824



Persimmon Seeds
C10825



Cream Seeds
C10825



Gold Seeds
C10825



Olive Seeds
C10825



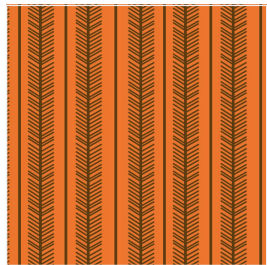
Gold Vines
C10826



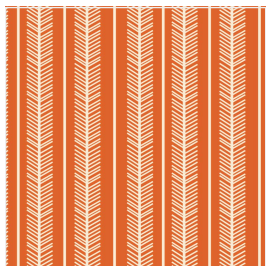
Orange Vines
C10826



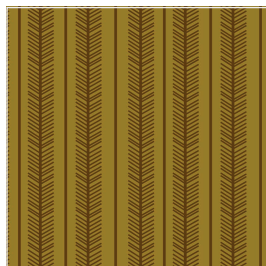
Cream Vines
C10826



Persimmon Stripes
C10827



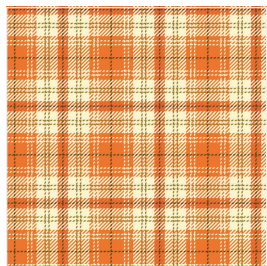
Orange Stripes
C10827



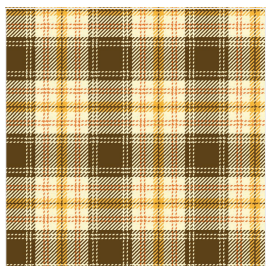
Olive Stripes
C10827



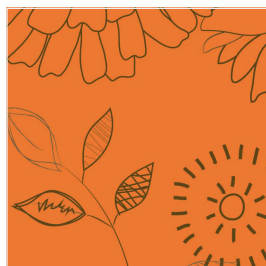
Persimmon Plaid
C10828



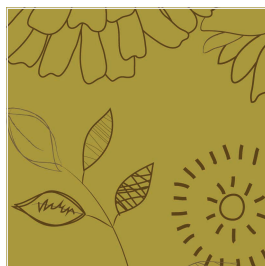
Orange Plaid
C10828



Chocolate Plaid
C10828



Persimmon Wide Back
WB10831

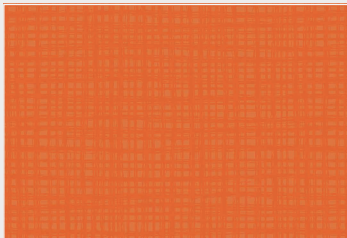


Olive Wide Back
WB10831

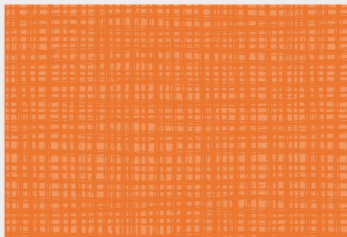


Cream Wide Back
WB10831

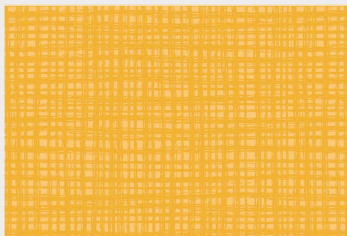
Suggested Coordinates



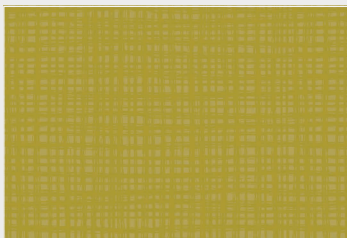
NEW Persimmon Texture | C610-PERSIMMON



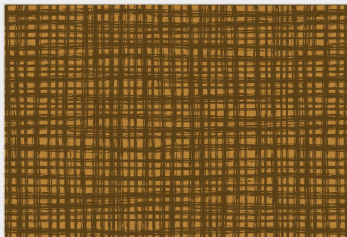
NEW Pumpkin Texture | C610-PUMPKIN



Gold Texture | C610-GOLD



Winter Pear Texture | C610-WINTERPEAR



Chocolate Texture | C610-CHOCOLATE



Vanilla Texture | C610-VANILLA



behind the seams

fall gatherings

by Sandy Gervais

Quilt Size: 74" x 74"

Sew Along: September 2021

Sew along with Jamie Siel (Sew Brainy) as she makes not one, but two versions of Sandy Gervais' (Pieces from my Heart) **Fall Gatherings** quilt. Her first version will be directly from the quilt kit featuring Sandy's collection, **Adel in Autumn**. Jamie puts her own modern spin on the second version with Riley Blake Designs basic, **Confetti Cottons**.

Follow Jamie, @sewbrainy, and visit her blog sewbrainy.com for more information.





Riley Blake Designs • 9646 South 500 West, Sandy, Utah 84070
Toll Free 1.888.768.8454 • Tel 801.816.0540 • Fax 801.816.0542
www.rileyblakedesigns.com
Not intended for children's sleepwear
©2021 Riley Blake Designs and Sandy Gervais