

Day 3: 12 Days of Christmas with RBD

12" x 12" Finished

rileyblakedesigns.com @rileyblakedesigns

FABRIC REQUIREMENTS

C780-TREETOP (*Fabric 1*)

C120-CLOVER (*Fabric 2*)

C120-CLOUD (*Fabric 3*)

C120-TIMBERLINE
(*Fabric 4*)

SUGGESTED NOTIONS

(9) RED 5/8"-DIAMETER
BUTTONS

CUTTING INSTRUCTIONS

Fabric 1:

- A – (4) 5 1/2" x 5 1/2" squares, cutting each in half diagonally twice to make (16) triangles

Fabric 2:

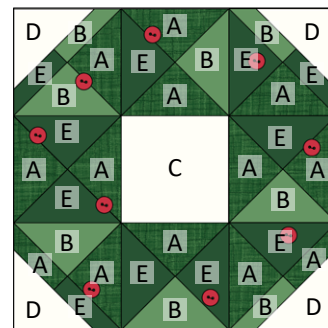
- B – (2) 5 1/2" x 5 1/2" squares, cutting each in half diagonally twice to make (8) triangles

Fabric 3:

- C – (1) 4 1/2" x 4 1/2" square
- D – (4) 3 1/2" x 3 1/2" squares

Fabric 4:

- E – (3) 5 1/2" x 5 1/2" squares, cutting each in half diagonally twice to make (12) triangles



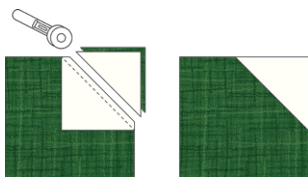
RST = RIGHT SIDES TOGETHER

SNF = STITCH AND FLIP

Sew all seams RST and with a 1/4" seam allowance. Press seams as desired unless stated otherwise. Dimensions listed in steps are unfinished sizes. Refer to the following general sewing technique as this method is referenced throughout the pattern in its abbreviated form.

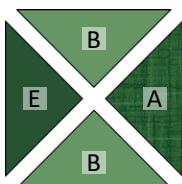
STITCH AND FLIP METHOD INSTRUCTIONS (SNF)

Place (2) pieces RST, matching raw edges in the corner to be replaced. Draw a diagonal line on the wrong side of the smaller piece across the corner. Sew on the drawn line. Trim the seam allowance outside the sewn line to 1/4". Flip the smaller piece away from the larger piece and press, replacing the corner. The size of the larger, original piece does not change.



SEWING INSTRUCTIONS

1. Arrange (1) A-triangle, (2) B-triangles, and (1) E-triangle as shown below. Sew the triangles together into pairs. Next, sew the pairs together to make (1) Hourglass Unit. Trim the unit to measure 4 1/2" x 4 1/2".



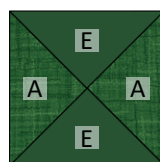
Make (1)



4 1/2" x 4 1/2"

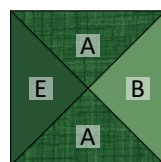
2. Repeat Step 1 to make the Hourglass Units shown below, referencing the diagrams for quantity, proper placement, and orientation. Trim each unit to measure 4 1/2" x 4 1/2". Note: There will be leftover triangles.

Make (1)



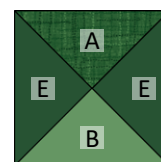
4 1/2" x 4 1/2"

Make (2)



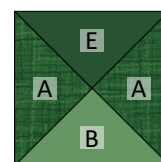
4 1/2" x 4 1/2"

Make (2)



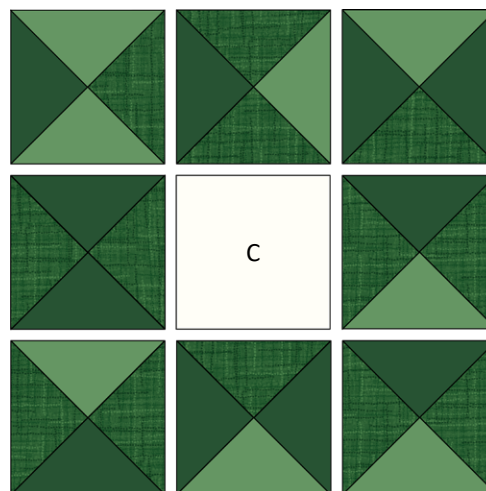
4 1/2" x 4 1/2"

Make (2)



4 1/2" x 4 1/2"

3. Arrange (8) Hourglass Units and (1) C-square as shown below. Sew the units and square together into rows. Next, sew the rows together to make (1) Wreath Unit.



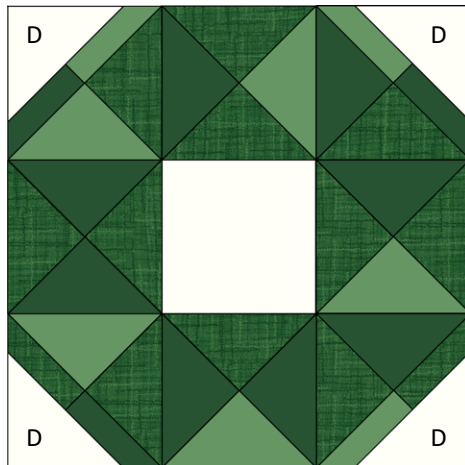
12 1/2" x 12 1/2"

Day 3: 12 Days of Christmas with RBD

12" x 12" Finished

rileyblakedesigns.com @rileyblakedesigns

4. Use the SNF method to sew (1) **D**-square to each corner of the Wreath Unit as shown below to make the Day 3 block. The block should measure 12 ½" x 12 ½" unfinished.



12 ½" x 12 ½"

5. If desired, sew buttons or other embellishments to the Day 3 block as shown, right.

Your block is complete!

