

Home Town Sew Along Guide

by Lori Holt of Bee in my Bonnet

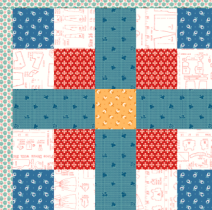
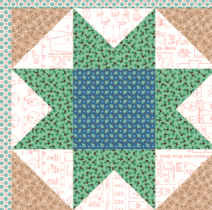
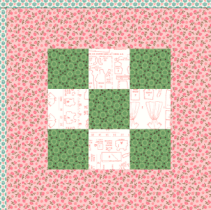
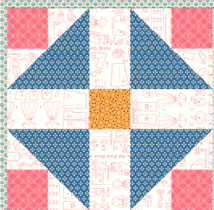


 **Riley Blake**
DESIGNS™



75" x 84"





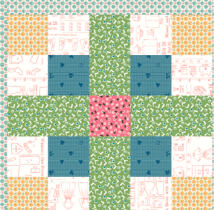
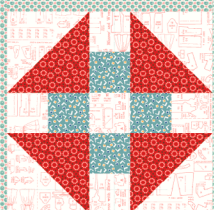
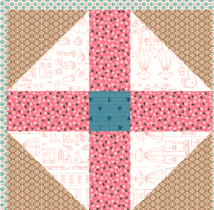
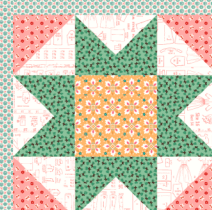
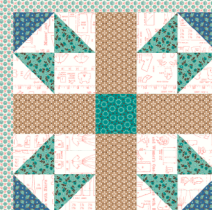
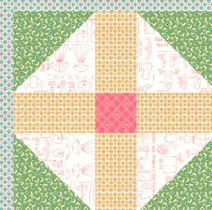
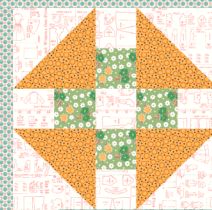


Home Town Schedule

Starting Monday, September 18, 2023

August 28	Bee Prepared!
September 18	Flag House
September 22	Topiary House
September 25	Pineapple House
September 29	Sunflower House
October 2	Bird House
October 6	Tulip House
October 9	Fireworks House
October 13	Beehive House
October 16	Sheep House
October 20	Cherry House
October 23	Tea House
October 27	Strawberry House
October 30	The Big Finish!

www.beeinmybonnetco.blogspot.com



Home Town Sew Along Guide

FINISHED QUILT SIZE 75" x 84"

WOF = Width of Fabric, LOF = Length of Fabric

This guide requires a basic knowledge of quilting techniques and terminology. The quilt and block diagrams portrayed are virtual images. The layout and look of your project may differ when using actual fabric.

The guide is intended to be used in conjunction with Lori Holt's Home Town Sew Along. Join Lori on her blog every Monday and Friday starting September 18, 2023 at [beeinmybonnetco.blogspot.com](https://www.beeinmybonnetco.blogspot.com) for weekly instructions. Visit [Lori's YouTube Channel](#) during Week 1 and don't forget to watch for her Bee Prepared blog post on Monday, August 28, 2023.

*NOTE: All appliqué block backgrounds are cut a little larger than unfinished size to allow for trimming up.

The appliqué portions of the quilt are made using Lori's appliqué method. The link below to the Week 1 video of a previous Sew Along on Lori's YouTube Channel shows her appliqué technique:

<https://www.youtube.com/watch?v=xe7nvV6BHXy>.

FABRIC REQUIREMENTS

2 Yards C13594-HEIRSEAGLASS Bodell (Border)
2 Yards C13598-TEADYE Butterfield (Appliqué Block Background)
1 ½ Yards C13596-HEIRSEAGLASS Crane (Sashing)
1 ⅞ Yards C13599-CORAL Patterns
¾ Yard C13593-TEAL Miller (Binding)

½ Yard of Each:

C13583 -BROWNSUGAR Newman
C13587-LETTUCE Hardman
C13592-LTBASIL Mangum
C13594-TEADYE Bodell

⅔ Yard of Each:

C13593-BASIL Miller
C13594-LETTUCE Bodell
C13598-LETTUCE Butterfield

Fat Quarter of Each:

C13583-HEIRCOTTAGE Newman
C13584-LEAF Eastman
C13586-LETTUCE Sorenson
C13587-HEIRCORAL Hardman
C13588-DENIM Butterfield
C13588-HEIRDAISY Butterfield
C13591-HEIRDAISY Hamilton
C13592-HEIRCOTTAGE Mangum
C13593-HEIRDAISY Miller
C13593-SCHRED Miller
C13594-FROSTING Bodell
C13595-BROWNSUGAR Dansie
C13595-SCHRED Dansie
C13596-HEIRDAISY Crane
C13597-DENIM Freeman
C6405-GRAY Polka Dot Bee Basics



Home Town Sew Along Guide

Fabric Cutting Guide (WOF = Width of Fabric, LOF = Length of Fabric)

Always be mindful when cutting pieces from each fabric in your kit by cutting **LARGEST PIECES FIRST**, as well as any WOF strips for the bias tape makers.

FABRIC REQUIREMENTS (cont'd.)

Fat Eighth of Each:

C13580-SCHRED Parry
C13580-TEAL Parry
C13581-DKALPINE Park
C13581-TEAROSE Park
C13582-HEIRCORAL Bills
C13582-TEADYE Bills
C13584-TEAROSE Eastman
C13585-DENIM Lewis
C13585-TEAROSE Lewis
C13586-HEIRCOTTAGE Sorenson
C13589-LEAF Forman
C13590-LEAF Swasey
C13591-HEIRSEAGLASS Hamilton
C13595-DENIM Dansie
C13595-TEAL Dansie
C13597-TEAL Freeman

Suggested Backing:

2 ½ Yards WB13601-HEIRSEAGLASS Wide Back

NOTIONS/SUPPLIES

10 Yards STVT-2660 Large Sea Glass Vintage Trim
(1) Package ST-4913 Sew-In Interfacing
STT-31079 Home Town Sew Simple Shapes™
STB-6023 Lori Holt Cute Little Buttons ¼"
DMC 611 Floss for Embroidery
TH-LH5080BB45 Lori Holt Bee Happy Aurifil Thread Box
STTI-5527 Lori Holt Cute Cuts™ Trim It™ 5 ½" Square Ruler
STTI-21862 Lori Holt Cute Cuts™ Trim It™ 14 ½" Square Ruler
N039-464-06 ¼" Bias Tape Maker
N039-464-12 ½" Bias Tape Maker
N039-464-18 ¾" Bias Tape Maker
N039-464-25 1" Bias Tape Maker
N039-7803 Point 2 Point Turner
N093-GLUE Sue Daley Designs Appliqué Glue
ST-8644 Lori Holt Appliqué Pretty Pins™
ST-8517 Lori Holt Nifty Needles™
ST-21865 Lori Holt Easy Trace Light Box®
Lori Holt Seams Sew Easy™ Seam Guide
Bee in my Bonnet Design Boards
ST-33034 Lori Holt Busy Bee Pencils

CUTTING INSTRUCTIONS



C13594-HEIRSEAGLASS Bodell (2 Yards)

Cut (7) 7 ½" x WOF strips. Sew together then subcut:

(2) 7 ½" x 70 ½" rectangles for side borders

(2) 7 ½" x 75 ½" rectangles for top/bottom borders

Cut (1) 7 ½" x 8 ½" rectangle use Q-1 for Tulip House

Cut (17) 1 ½" x 1 ½" squares—(8) for Pieced Block #10,

(8) for Pieced Block #23, and (1) Pieced Block #30



C13598-TEADYE Butterfield (2 Yards)

Cut (4) 16" x WOF strips, subcut:

(12) 14" x 16" rectangles for each House

Cut (4) 2 ¼" x 2 ¼" squares for fireworks in Fireworks House;
use Q-36 after piecing

Cut (4) 2" x 2" squares for fireworks in Fireworks House; use
Q-35 after piecing

Cut (4) 1 ½" x 1 ½" squares for fireworks in Fireworks House;
use Q-34 after piecing

Cut (8) 1 ½" x 1 ½" squares for fireworks in Fireworks House;
use Q-33 after piecing



C13596-HEIRSEAGLASS Crane (1 ½ Yards)

Cut (12) 1 ½" x WOF strips. Sew together, then subcut:

(8) 1 ½" x 61 ½" horizontal sashing strips

Cut (15) 1 ½" x WOF strips, subcut:

(15) 1 ½" x 14 ½" vertical sashing strips

(44) 1 ½" x 5 ½" vertical sashing strips

Cut (1) 7 ½" x 8 ½" rectangle use Q-1 for Bird House

Home Town Sew Along Guide



C13599-CORAL Patterns (1 ½ Yards)

Cut (2) 2 ½" x WOF strips; subcut:

(32) 2 ½" x 2 ½" squares—(4) for Pieced Block #9,
(4) for Pieced Block #13, (4) for Pieced Block #22,
and (4) for Pieced Block #38

Cut (1) 2 ½" x WOF strip; subcut:

(16) 2 ½" x 2" rectangles—(4) for Pieced Block #5,
(4) for Pieced Block #20, (4) for Pieced Block #27,
and (4) for Pieced Block #31

Cut (3) 2" x WOF strips; subcut:

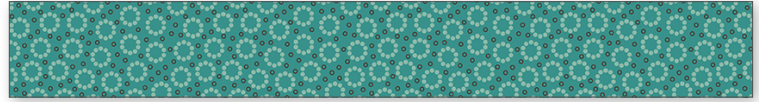
(48) 2" x 2" squares—(4) for Pieced Block #4,
(4) for Pieced Block #5, (4) for Pieced Block #7,
(4) for Pieced Block #12, (4) for Pieced Block #19,
(4) for Pieced Block #20, (4) for Pieced Block #24,
(4) for Pieced Block #26, (4) for Pieced Block #27,
(4) for Pieced Block #31, (4) for Pieced Block #32,
and (4) for Pieced Block #39

Cut (2) 1 ½" x WOF strips; subcut:

(32) 1 ½" x 2 ½" rectangles—(8) for Pieced Block #1,
(8) for Pieced Block #18, (8) for Pieced Block #30,
and (8) for Pieced Block #34

Cut (10) 1 ½" x WOF strips; subcut:

(276) 1 ½" x 1 ½" squares—(4) for Pieced Block #1,
(4) for Pieced Block #2, (16) for Pieced Block #3,
(4) for Pieced Block #4, (8) for Pieced Block #6,
(5) for Pieced Block #7, (12) for Pieced Block #8,
(16) for Pieced Block #10, (8) for Pieced Block #11,
(5) for Pieced Block #12, (16) for Pieced Block #14,
(4) for Pieced Block #15, (12) for Pieced Block #16,
(16) for Pieced Block #17, (4) for Pieced Block #18,
(4) for Pieced Block #19, (16) for Pieced Block #21,
(12) for Pieced Block #23, (5) for Pieced Block #24,
(8) for Pieced Block #25, (4) for Pieced Block #26,
(4) for Pieced Block #28, (16) for Pieced Block #29,
(4) for Pieced Block #30, (4) for Pieced Block #32,
(16) for Pieced Block #33, (4) for Pieced Block #34,
(4) for Pieced Block #35, (12) for Pieced Block #36,
(16) for Pieced Block #37, (5) for Pieced Block #39,
and (8) for Pieced Block #40



C13593-TEAL Miller (¾ Yard)

Cut (9) 2 ½" x WOF strips for binding

Cut (7) 1 ½" x 1 ½" squares—(1) square for Pieced Block #10,
(1) square for Pieced Block #23, and (5) squares for
Pieced Block #35



C13583-BROWNSUGAR Newman (½ Yard)

Cut (1) 1" x 31" strip to make ½" Straight Bias; subcut prepared
bias—(1) 12" strip for Sheep House, (1) 8" strip for
Bird House, and (1) 6" strip for Cherry House

Cut (1) ¾" x WOF strip to make ¾" Straight Bias; subcut
prepared bias—(1) 8" strip for Cherry House,
(1) 8" strip for Sunflower House, (1) 8" strip for
Fireworks House, (1) 6" strip for Bird House, and
(2) 4" strips for Flag House

Cut (2) ¾" x WOF strips to make ¼" Straight Bias; subcut
prepared bias—(1) 32" strip for Topiary House,
(1) 10" strip for Cherry House, (1) 8" strip for
Sheep House, (1) 6" strip for Pineapple House,
(1) 6" strip for Fireworks House, (1) 5" strip for
Sunflower House, and (1) 4" strip for Bird House

Cut (1) 3 ½" x 9 ½" rectangle use Q-11 for roof in
Strawberry House

Cut (1) 3 ½" x 3 ½" square use Q-63 for chimney in Bird House

Cut (1) 3" x 3 ½" rectangle use Q-62 for planter in Flag House

Cut (3) 2 ½" x 5" rectangles use Q-7 for doors in Topiary House,
Bird House, and Pineapple House

Cut (1) 2 ½" x 2 ½" square use Q-47 for sheep's head in
Sheep House

Cut (1) 2 ½" x 2 ½" square for Pieced Block #27

Cut (1) 2" x 3 ½" rectangle use Q-14 for awning in Beehive House

Cut (4) 2" x 2" squares use Q-17 for chimneys in Flag House
and Pineapple House

Cut (2) 2" x 2" squares use Q-33 for flower centers in
Sunflower House

Cut (2) 1 ½" x 3" rectangles for planter bottoms in Topiary
House; use Q-61 after piecing

Cut (4) 1 ½" x 2 ½" rectangles for Pieced Block #16

Cut (4) 1 ½" x 2" rectangles use Q-15 for chimneys in
Topiary House and Sunflower House

Cut (1) 1 ½" x 2" rectangle use Q-53 for bee's head in
Beehive House

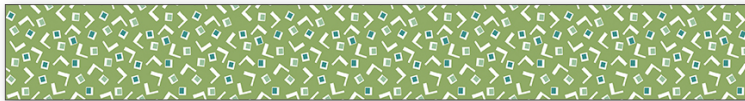
Cut (2) 1" x 3 ½" rectangles for planter bottoms in
Sunflower House; use Q-60 after piecing

Home Town Sew Along Guide



C13587-LETTUCE Hardman (½ Yard)

- Cut (3) 16" x 3 ½" rectangles for grass in Beehive House, Sunflower House, and Sheep House
- Cut (1) 3 ¾" x 6 ½" rectangle use Q-20 for tree in Bird House
- Cut (1) 2 ½" x 3 ¾" rectangle use Q-26 for leaf in Strawberry House
- Cut (2) 2" x 5 ½" rectangles use Q-37 for leaves in Tulip House
- Cut (2) 2" x 3 ½" rectangles use Q-21 for tree in Sheep House
- Cut (2) 2" x 3" rectangles use Q-22 for shrubs in Cherry House
- Cut (1) 2" x 2 ¾" rectangle use Q-27 for leaves in Flag House
- Cut (1) 2" x 2 ¾" rectangle use Q-54 for leaf in Beehive House
- Cut (4) 2" x 2" squares for Pieced Block #19
- Cut (2) 2" x 2" squares use Q-33 for topiaries in Topiary House
- Cut (4) 1 ½" x 2 ½" rectangles use Q-28 for leaves in Sunflower House



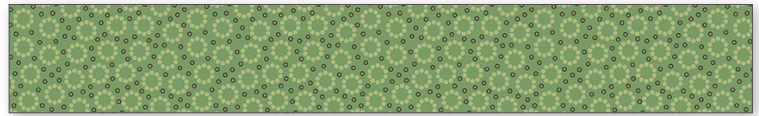
C13592-LTBASIL Mangum (½ Yard)

- Cut (3) 16" x 3 ½" rectangles for grass in Bird House, Fireworks House, and Pineapple House
- Cut (1) 4 ¼" x 6 ½" rectangle use Q-18 for tree in Cherry House
- Cut (4) 2 ½" x 2 ½" squares for Pieced Block #9
- Cut (2) 2 ½" x 2 ½" squares use Q-34 for topiary in Topiary House
- Cut (2) 2" x 5 ½" rectangles use Q-37 for leaves in Tulip House
- Cut (1) 2" x 3 ½" rectangle use Q-21 for tree in Sheep House
- Cut (1) 2" x 3" rectangle use Q-24 for leaf in Strawberry House
- Cut (1) 2" x 2 ¾" rectangle use Q-54 for leaf in Beehive House
- Cut (8) 2" x 2" squares for Pieced Block #31
- Cut (4) 1 ½" x 2 ½" rectangles use Q-28 for leaves in Sunflower House
- Cut (4) 1 ½" x 2 ½" rectangles for Pieced Block #11
- Cut (1) 1 ½" x 2 ½" rectangle use Q-29 for leaf in Pineapple House
- Cut (4) 1 ½" x 1 ½" squares for Pieced Block #36
- Cut (2) 1 ½" x 1 ½" squares use Q-25 for leaves in Tea House



C13594-TEADYE Bodell (½ Yard)

- Cut (1) 1" x 3" strip to make ½" Straight Bias for Bird House
- Cut (1) ¾" x WOF strip to make ⅜" Straight Bias for Cherry House
- Cut (1) ⅝" x 18" strip to make ¼" Straight Bias for Topiary House
- Cut (2) 7" x 9 ½" rectangles use Q-2 for house in Beehive House and Pineapple House
- Cut (1) 3 ½" x 4 ½" rectangle use Q-46 for sheep's body in Sheep House
- Cut (2) 3" x 8 ½" rectangles use Q-9 for roofs in Flag House
- Cut (2) 2 ½" x 3 ½" rectangles for planters in Sunflower House; use Q-60 after piecing
- Cut (1) 2" x 3 ½" rectangle use Q-14 for awning in Bird House
- Cut (4) 2" x 2" squares for Pieced Block #5
- Cut (4) 1 ½" x 3 ½" rectangles for Pieced Block #26
- Cut (2) 1 ½" x 3 ½" rectangles for planters in Sunflower House; use Q-60 for after piecing
- Cut (20) 1 ½" x 1 ½" squares—(8) for Pieced Block #8, (8) for Pieced Block #16, and (4) for Pieced Block #17



C13593-BASIL Miller (⅜ Yard)

- Cut (1) ⅝" x WOF strip to make ¼" Straight Bias; subcut prepared bias—(2) 7" strips for Sunflower House, (2) 6" strips for Tulip House, (1) 5" strip for Pineapple House, (2) 4" strips for Tea House, and (1) 4" strip for Flag House
- Cut (2) ⅝" x 14" strips ON BIAS to make ¼" Curved Bias; subcut prepared bias—(1) 14" strip; (4) 3" strips for Strawberry House
- Cut (1) ⅝" x 7" strip ON BIAS to make ¼" Curved Bias for Beehive House
- Cut (3) 2 ½" x 4 ½" rectangles use Q-23 for shrubs in Bird House, Strawberry House, and Pineapple House
- Cut (1) 2" x 3 ½" rectangle use Q-21 for tree in Sheep House
- Cut (7) 2" x 3" rectangles use Q-22 for shrubs in Tea House, Bird House, Fireworks House, and Sheep House
- Cut (1) 2" x 2 ½" rectangle use Q-30 for pineapple top in Pineapple House
- Cut (5) 2" x 2" squares use Q-31 for strawberry tops in Strawberry House
- Cut (4) 1 ½" x 2 ½" rectangles for Pieced Block #13
- Cut (1) 1 ½" x 2 ½" rectangle use Q-28 for leaf in Cherry House
- Cut (1) 1 ½" x 2 ½" rectangle use Q-29 for leaf in Pineapple House
- Cut (11) 1 ½" x 1 ½" squares—(5) for Pieced Block #2, (1) for Pieced Block #18, (4) for Pieced Block #34, and (1) for Pieced Block #38

Home Town Sew Along Guide



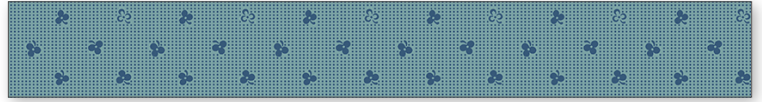
C13594-LETTUCE Bodell (3/8 Yard)

- Cut (3) 16" x 3 1/2" rectangles for grass in Topiary House, Cherry House, and Strawberry House
- Cut (1) 2 1/2" x 4 1/2" rectangle for Q-23 for shrub in Beehive House
- Cut (4) 2 1/2" x 1 1/2" rectangles for Pieced Block #21
- Cut (4) 2 1/4" x 2 1/4" squares for fireworks in Fireworks House; use Q-36 after piecing
- Cut (1) 2" x 2 3/4" rectangle use Q-27 for leaves in Flag House
- Cut (2) 1 1/2" x 5 1/2" rectangles for Pieced Block #28
- Cut (2) 1 1/2" x 3 1/2" rectangles for Pieced Block #28
- Cut (5) 1 1/2" x 2 1/2" rectangles use Q-28 for leaves in Cherry House and for Sunflower House
- Cut (1) 1 1/2" x 2 1/2" rectangle use Q-29 for leaf in Pineapple House
- Cut (5) 1 1/2" x 1 1/2" squares—(1) for Pieced Block #8 and (4) for Pieced Block #37



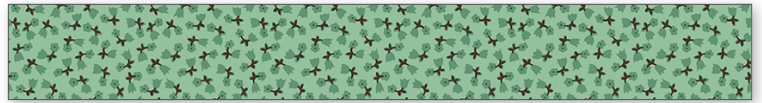
C13598-LETTUCE Butterfield (3/8 Yard)

- Cut (22) 2" x 2 1/2" rectangles use Q-16 for windows—(4) for Flag House, (4) for Fireworks House, (1) for Sunflower House, (4) for Strawberry House, (4) for Sheep House, (1) for Tulip House, and (4) for Pineapple House
- Cut (13) 2" x 2" squares use Q-17 for windows—(4) for Beehive House, (2) for Topiary House, (5) for Bird House, and (2) for Flag House
- Cut (2) 1 3/4" x 2 1/2" rectangles use Q-12 for windows in Sheep House and Pineapple House
- Cut (29) 1 1/2" x 2" rectangles use Q-15 for windows—(3) for Topiary House, (10) for Tea House, (5) for Cherry House, (3) for Fireworks House, (4) for Sunflower House, and (4) for Tulip House



C13583-HEIRCOTTAGE Newman (Fat Quarter)

- Cut (1) 1" x 5" strip to make 1/2" Straight Bias for Tea House
- Cut (1) 3/4" x 9" strip to make 3/8" Straight Bias for Tea House
- Cut (1) 3 1/2" x 9 1/2" rectangle use Q-3 for house in Flag House
- Cut (1) 3 1/2" x 6" rectangle use Q-3 for addition in Flag House
- Cut (1) 3" x 5" rectangle use Q-59 for planter in Strawberry House
- Cut (1) 2 1/2" x 4 1/2" rectangle use Q-50 for bird's body in Bird House
- Cut (2) 2" x 2 1/2" rectangles use Q-16 for chimneys in Sheep House
- Cut (1) 1 3/4" x 2 1/2" rectangle use Q-12 for awning in Strawberry House
- Cut (4) 1 1/2" x 2 1/2" rectangles for Pieced Block #6
- Cut (6) 1 1/2" x 1 1/2" squares—(4) for Pieced Block #11, (1) for Pieced Block #22, and (1) for Pieced Block #36
- Cut (4) 1 1/2" x 1 1/2" squares for fireworks in Fireworks House; use Q-33 after piecing



C13584-LEAF Eastman (Fat Quarter)

- Cut (1) 3 1/2" x 3 1/2" square use Q-63 for chimney in Cherry House
- Cut (4) 2 1/2" x 2 1/2" squares for Pieced Block #39
- Cut (20) 2" x 2" squares—(8) for Pieced Block #5, (8) for Pieced Block #20, and (4) for Pieced Block #27
- Cut (1) 1 3/4" x 2 1/2" rectangle use Q-12 for awning in Cherry House
- Cut (4) 1 1/2" x 1 1/2" squares for Pieced Block #14



C13586-LETTUCE Sorenson (Fat Quarter)

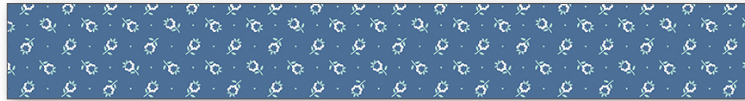
- Cut (3) 16" x 3 1/2" rectangles for grass in Tea House, Flag House, and Tulip House
- Cut (1) 3" x 7" rectangle use Q-19 for tree in Bird House
- Cut (2) 3" x 3" squares use Q-35 for topiaries in Topiary House
- Cut (1) 2" x 3 1/2" rectangle use Q-21 for tree in Sheep House
- Cut (4) 1 1/2" x 1 1/2" squares for Pieced Block #7

Home Town Sew Along Guide



C13587-HEIRCORAL Hardman (Fat Quarter)

- Cut (1) 7 ½" x 8 ½" rectangle use Q-1 for house in Topiary House
- Cut (1) 3 ½" x 3 ½" square use Q-45 for flower in Pineapple House
- Cut (1) 3" x 4" rectangle use Q-43 for flower in Beehive House
- Cut (1) 2 ½" x 5" rectangle use Q-6 for door in Fireworks House
- Cut (1) 2 ½" x 3" rectangle use Q-39 for strawberry in Strawberry House
- Cut (4) 2" x 2" squares for Pieced Block #20
- Cut (1) 2" x 2" square use Q-31 for flower in Tea House
- Cut (8) 1 ½" x 1 ½" squares—(4) for Pieced Block #12 and (4) for Pieced Block #25



C13588-DENIM Butterfield (Fat Quarter)

- Cut (1) 1 ¼" x 5" strip to make ¾" Straight Bias for Pineapple House
- Cut (2) 2 ½" x 6 ½" rectangles use Q-5 (reverse 1) for additions in Tea House
- Cut (1) 2 ½" x 5" rectangle use Q-7 for door in Flag House
- Cut (1) 2" x 3 ½" rectangle use Q-21 for planter base in Pineapple House
- Cut (4) 2" x 2" squares for Pieced Block #26
- Cut (1) 2" x 2" square use Q-56 for flag in Flag House
- Cut (4) 1 ½" x 2 ½" rectangles for Pieced Block #14
- Cut (16) 1 ½" x 1 ½" squares—(4) for Pieced Block #6, (4) for Pieced Block #14, and (8) for Pieced Block #17



C13588-HEIRDAISY Butterfield (Fat Quarter)

- Cut (1) ⅝" x 4" strip to make ¼" Straight Bias for Bird House
- Cut (1) 3 ½" x 9 ½" rectangle use Q-11 (short version) for roof in Cherry House
- Cut (2) 3 ½" x 3 ½" squares use Q-44 for flowers in Sunflower House
- Cut (4) 2 ½" x 2 ½" squares for Pieced Block #18
- Cut (1) 2 ½" x 2 ½" square use Q-34 for sun in Tea House
- Cut (1) 1 ¾" x 2" rectangle use Q-32 for flower center in Flag House
- Cut (4) 1 ½" x 3 ½" rectangles for Pieced Block #32
- Cut (4) 1 ½" x 2 ½" rectangles for Pieced Block #23
- Cut (18) 1 ½" x 1 ½" squares—(4) for Pieced Block #3, (1) for Pieced Block #6, (12) for Pieced Block #29, (1) for Pieced Block #34
- Cut (4) 1 ½" x 1 ½" squares for fireworks in Fireworks House; use Q-34 after piecing
- Cut (1) 1 ½" x 1 ½" square for bird's beak in Bird House; use Q-50 after piecing
- Cut (3) 1" x 3 ½" strips for beehive stripes in Beehive House; use Q-52 after piecing



C13591-HEIRDAISY Hamilton (Fat Quarter)

- Cut (1) 4" x 8" rectangle use Q-4 (reverse) for addition in Cherry House
- Cut (1) 3 ½" x 9 ½" rectangle use Q-11 (short version) for roof in Tulip House
- Cut (1) 2 ½" x 5" rectangle use Q-6 for door in Sunflower House
- Cut (1) 2 ½" x 2 ½" square for Pieced Block #20
- Cut (2) 1 ½" x 5 ½" rectangles for Pieced Block #15
- Cut (6) 1 ½" x 3 ½" rectangles—(4) for Pieced Block #4 and (2) for Pieced Block #15
- Cut (4) 1 ½" x 2 ½" rectangles for Pieced Block #40
- Cut (2) 1" x 3 ½" strips for beehive stripes in Beehive House; use Q-52 after piecing



C13592-HEIRCOTTAGE Mangum (Fat Quarter)

- Cut (1) 7" x 9 ½" rectangle use Q-2 for house in Tea House
- Cut (2) 3 ½" x 3 ½" squares use Q-63 for chimneys in Tea House and Strawberry House
- Cut (1) 2 ½" x 5" rectangle use Q-7 for door in Strawberry House
- Cut (16) 1 ½" x 1 ½" squares—(4) for Pieced Block #24 and (12) for Pieced Block #37

Home Town Sew Along Guide



C13593-HEIRDAISY Miller (Fat Quarter)

- Cut (1) $\frac{5}{8}$ " x 20" strip to make $\frac{1}{4}$ " Straight Bias for Tea House
- Cut (1) $2\frac{3}{4}$ " x $3\frac{1}{2}$ " rectangle use Q-40 for pineapple in Pineapple House
- Cut (1) $2\frac{1}{4}$ " x $4\frac{1}{4}$ " rectangle use Q-41 for moon in Flag House
- Cut (4) $2\frac{1}{2}$ " x $2\frac{1}{2}$ " squares for Pieced Block #7
- Cut (1) 2 " x $2\frac{1}{4}$ " rectangle use Q-54 for bee body in Beehive House
- Cut (8) $1\frac{1}{2}$ " x $1\frac{1}{2}$ " squares—(1) for Pieced Block #1, (1) for Pieced Block #17, (4) for Pieced Block #21, (1) for Pieced Block #25, and (1) for Pieced Block #37
- Cut (3) 1 " x $3\frac{1}{2}$ " strips for beehive stripes in Beehive House; use Q-52 after piecing



C13593-SCHRED Miller (Fat Quarter)

- Cut (2) 4 " x $4\frac{1}{2}$ " rectangles use Q-38 for tulips in Tulip House
- Cut (1) $2\frac{1}{2}$ " x 3 " rectangle use Q-39 for strawberry in Strawberry House
- Cut (4) $2\frac{1}{2}$ " x $2\frac{1}{2}$ " squares for Pieced Block #24
- Cut (1) 2 " x 3 " rectangle use Q-22 for flower in Flag House
- Cut (1) 2 " x 2 " square use Q-33 for cherry in Cherry House
- Cut (25) $1\frac{1}{2}$ " x $1\frac{1}{2}$ " squares—(12) for Pieced Block #3, (1) for Pieced Block #16, (8) for Pieced Block #33, and (4) for Pieced Block #40



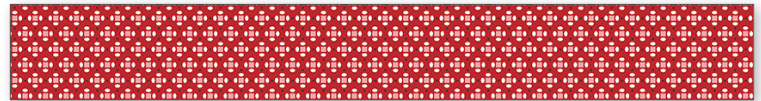
C13594-FROSTING Bodell (Fat Quarter)

- Cut (1) $7\frac{1}{2}$ " x $8\frac{1}{2}$ " rectangle use Q-1 for house in Sunflower House
- Cut (1) $2\frac{1}{2}$ " x 5 " rectangle use Q-7 for door in Sheep House
- Cut (1) $2\frac{1}{2}$ " x $2\frac{1}{2}$ " square for Pieced Block #31
- Cut (1) 2 " x 2 " square use Q-31 for flower in Tea House
- Cut (4) 2 " x 2 " squares for fireworks in Fireworks House; use Q-35 after piecing
- Cut (2) $1\frac{1}{2}$ " x $5\frac{1}{2}$ " rectangles for Pieced Block #2
- Cut (2) $1\frac{1}{2}$ " x $3\frac{1}{2}$ " rectangles for Pieced Block #2
- Cut (8) $1\frac{1}{2}$ " x $1\frac{1}{2}$ " squares—(4) for Pieced Block #18 and (4) for Pieced Block #40



C13595-BROWNSUGAR Dansie (Fat Quarter)

- Cut (1) 7 " x $9\frac{1}{2}$ " rectangle use Q-2 for house in Fireworks House
- Cut (2) 3 " x 4 " rectangles use Q-58 for planters in Tulip House
- Cut (2) 3 " x 3 " squares for planters in Topiary House; use Q-61 after piecing
- Cut (8) $2\frac{1}{2}$ " x $2\frac{1}{2}$ " squares—(4) for Pieced Block #13 and (4) for Pieced Block #22
- Cut (1) $2\frac{1}{2}$ " x $2\frac{1}{2}$ " square use Q-47 for beehive door in Beehive House
- Cut (8) $1\frac{1}{2}$ " x $2\frac{1}{2}$ " rectangles—(4) for Pieced Block #10 and (4) for Pieced Block #38
- Cut (1) $1\frac{1}{2}$ " x $1\frac{1}{2}$ " square for Pieced Block #29



C13595-SCHRED Dansie (Fat Quarter)

- Cut (1) 3 " x $10\frac{1}{2}$ " rectangle use Q-8 for roof in Pineapple House
- Cut (1) 3 " x $3\frac{1}{2}$ " rectangle use Q-57 for flag in Flag House
- Cut (1) $2\frac{1}{2}$ " x 5 " rectangle use Q-7 for door in Cherry House
- Cut (1) $2\frac{1}{2}$ " x 3 " rectangle use Q-39 for strawberry in Strawberry House
- Cut (1) $2\frac{1}{2}$ " x $2\frac{1}{2}$ " square use Q-42 for flower in Beehive House
- Cut (1) 2 " x $3\frac{1}{2}$ " rectangle use Q-14 for awning in Topiary House
- Cut (1) 2 " x 2 " square use Q-33 for cherry in Cherry House
- Cut (4) $1\frac{1}{2}$ " x $3\frac{1}{2}$ " rectangles for Pieced Block #19
- Cut (4) $1\frac{1}{2}$ " x $2\frac{1}{2}$ " rectangles for Pieced Block #36
- Cut (6) $1\frac{1}{2}$ " x $1\frac{1}{2}$ " squares—(4) for Pieced Block #6, (1) for Pieced Block #14, and (1) for Pieced Block #21
- Cut (4) $1\frac{1}{2}$ " x $1\frac{1}{2}$ " squares use Q-33 for fireworks in Fireworks House

Home Town Sew Along Guide



C13596-HEIRDAISY Crane (Fat Quarter)

- Cut (2) 7 ½" x 8 ½" rectangles use Q-1 for houses in Cherry House and Strawberry House
- Cut (2) 2" x 3" rectangles use Q-55 (reverse 1) for bee's wings in Beehive House
- Cut (1) 2" x 2" square use Q-33 for flower center in Pineapple House
- Cut (4) 1 ½" x 2 ½" rectangles for Pieced Block #9
- Cut (17) 1 ½" x 1 ½" squares—(4) for Pieced Block #11, (1) for Pieced Block #13, (4) for Pieced Block #33, (8) for Pieced Block #36
- Cut (3) 1" x 3 ½" strips for beehive stripes in Beehive House; use Q-52 after piecing



C13597-DENIM Freeman (Fat Quarter)

- Cut (1) 9 ½" x 7" rectangle use Q-2 for house in Sheep House
- Cut (1) 2 ½" x 2 ½" square for Pieced Block #5
- Cut (4) 2" x 2" squares for Pieced Block #31
- Cut (1) 1 ¾" x 2 ¾" rectangle use Q-51 for bird's wing in Bird House
- Cut (1) 1 ¾" x 2 ½" rectangle use Q-12 for awning in Tea House
- Cut (17) 1 ½" x 1 ½" squares—(4) for Pieced Block #10, (4) for Pieced Block #23, (5) for Pieced Block #28, and (4) for Pieced Block #39
- Cut (1) 1" x 3 ½" rectangle for teacup rim in Tea House; use Q-48 after piecing



C6405-GRAY Polka Dot Bee Basics (Fat Quarter)

- Cut (2) 1 ⅞" x WOF strips to make 1" Straight Bias; subcut prepared bias—(1) 5" strip for Topiary House, (1) 5" strip for Tea House, (1) 5" strip for Bird House, (1) 5" strip for Cherry House, (1) 5" strip for Fireworks House, (1) 5" strip for Sunflower House, (1) 5" strip for Strawberry House, (1) 5" strip for Sheep House, and (1) 5" strip for Pineapple House
- Cut (1) ⅝" x 14" strip to make ¼" Straight Bias for Flag House
- Cut (3) 2" x 4" rectangles use Q-13 for front porch in Beehive House, Flag House, and Tulip House



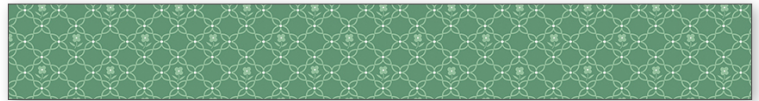
C13580-SCHRED Parry (Fat Eighth)

- Cut (1) 3 ½" x 8 ½" rectangle use Q-10 for roof in Topiary House
- Cut (1) 2 ½" x 3" rectangle use Q-39 for strawberry in Strawberry House



C13580-TEAL Parry (Fat Eighth)

- Cut (1) 3" x 10 ½" rectangle use Q-8 for roof in Fireworks House



C13581-DKALPINE Park (Fat Eighth)

- Cut (1) 3 ½" x 3 ½" square use Q-63 for chimney in Beehive House
- Cut (1) 2 ½" x 5" rectangle use Q-7 for door in Beehive House
- Cut (4) 1 ½" x 2 ½" rectangles for Pieced Block #25
- Cut (5) 1 ½" x 1 ½" squares—(4) for Pieced Block #29 and (1) for Pieced Block #40



C13581-TEAROSE Park (Fat Eighth)

- Cut (1) ⅝" x 7" strip ON BIAS to make ¼" Curved Bias for Tea House
- Cut (1) 3 ½" x 9 ½" rectangle use Q-3 for house in Sunflower House
- Cut (1) 2 ½" x 3 ½" rectangle for teacup in Tea House; use Q-48 after piecing
- Cut (5) 1 ½" x 1 ½" squares—(4) for Pieced Block #1 and (1) for Pieced Block #9



C13582-HEIRCORAL Bills (Fat Eighth)

- Cut (8) 2" x 2" squares for Pieced Block #27
- Cut (4) 1 ½" x 1 ½" squares for Pieced Block #16

Home Town Sew Along Guide



C13582-TEADYE Bills (Fat Eighth)

Cut (1) 3" x 8 ½" rectangle use Q-9 for roof in Bird House
Cut (2) 2" x 2" squares use Q-17 for chimneys in Fireworks House
Cut (2) 1 ½" x 5 ½" rectangles for Pieced Block #35
Cut (2) 1 ½" x 3 ½" rectangles for Pieced Block #35



C13584-TEAROSE Eastman (Fat Eighth)

Cut (1) 1" x 9" strip to make ½" Straight Bias for Sheep House
Cut (1) 2 ½" x 5" rectangle use Q-7 for door in Tea House
Cut (1) 2 ½" x 3" rectangle use Q-39 for strawberry in Strawberry House
Cut (4) 2 ½" x 2 ½" squares for Pieced Block #38
Cut (4) 2" x 2" squares for Pieced Block #4
Cut (8) 1 ½" x 2 ½" rectangles—(4) for Pieced Block #8 and (4) for Pieced Block #22
Cut (5) 1 ½" x 1 ½" squares—(1) for Pieced Block #11 and (4) for Pieced Block #30



C13585-DENIM Lewis (Fat Eighth)

Cut (1) 3" x 10 ½" rectangle use Q-8 for roof in Tea House
Cut (8) 2 ½" x 2 ½" squares—(4) for Pieced Block #12 and (4) for Pieced Block #30



C13585-TEAROSE Lewis (Fat Eighth)

Cut (1) 3 ½" x 8 ½" rectangle use Q-10 for roof in Sunflower House
Cut (4) 2 ½" x 2 ½" squares for Pieced Block #34



C13586-HEIRCOTTAGE Sorenson (Fat Eighth)

Cut (1) 3" x 10 ½" rectangle use Q-8 for roof in Sheep House



C13589-LEAF Forman (Fat Eighth)

Cut (1) 1 ½" x 2" rectangle use Q-49 for teabag label in Tea House



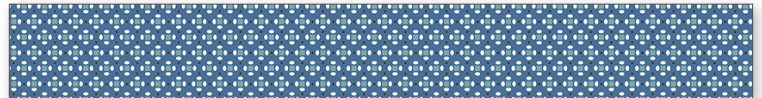
C13590-LEAF Swasey (Fat Eighth)

Cut (1) 3" x 10 ½" rectangle use Q-8 for roof in Beehive House
Cut (4) 1 ½" x 2 ½" rectangles for Pieced Block #17



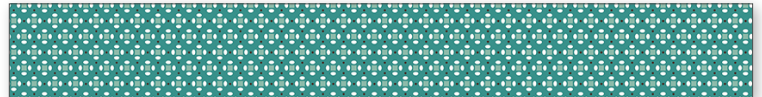
C13591-HEIRSEAGLASS Hamilton (Fat Eighth)

Cut (1) 4" x 8" rectangle use Q-4 for addition in Bird House
Cut (4) 1 ½" x 2 ½" rectangles for Pieced Block #33



C13595-DENIM Dansie (Fat Eighth)

Cut (1) 7 ½" x 8 ½" rectangle use Q-1 for Flag House
Cut (4) 2 ½" x 2 ½" squares for Pieced Block #1
Cut (1) 2" x 3 ½" rectangle use Q-14 for planter in Pineapple House
Cut (4) 1 ½" x 1 ½" squares for Pieced Block #25



C13595-TEAL Dansie (Fat Eighth)

Cut (14) 1 ½" x 1 ½" squares—(5) for Pieced Block #15, (8) for Pieced Block #21, and (1) for Pieced Block #33

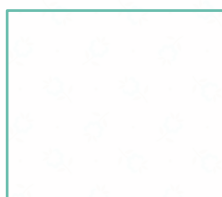


C13597-TEAL Freeman (Fat Eighth)

Cut (2) 2 ½" x 6 ½" rectangles use Q-5 (reverse 1) for additions in Fireworks House
Cut (1) 2 ½" x 5" rectangle use Q-7 for door in Tulip House
Cut (4) 2" x 2" squares for Pieced Block #32
Cut (2) 1 ½" x 2" rectangles use Q-15 for chimneys in Tulip House
Cut (5) 1 ½" x 1 ½" squares—(1) for Pieced Block #3 and (4) for Pieced Block #8

Cutting Guide for Home Town Sew Simple Shapes

Use when cutting sew-in interfacing
for the Home Town Sew Along



Q-1
7 ½" x 8 ½"
Cut 7



Q-2
7" x 9 ½"
Cut 5



Q-3
3 ½" x 9 ½"
Cut 2- 3 ½" x 9 ½"
Cut 1- 3 ½" x 6"



Q-4
4" x 8"
Cut 2



Q-5
2 ½" x 6 ½"
Cut 4



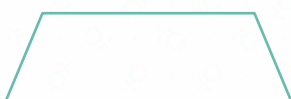
Q-6
2 ½" x 5"
Cut 2



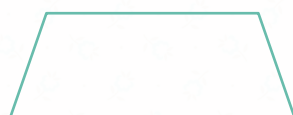
Q-7
2 ½" x 5"
Cut 10



Q-8
3" x 10 ½"
Cut 5



Q-9
3" x 8 ½"
Cut 3



Q-10
3 ½" x 8 ½"
Cut 2



Q-11
3 ½" x 9 ½"
Cut 3



Q-12
1 ¾" x 2 ½"
Cut 5



Q-13
2" x 4"
Cut 3



Q-14
2" x 3 ½"
Cut 4



Q-15
1 ½" x 2"
Cut 35



Q-16
2" x 2 ½"
Cut 24

Cutting Guide for Home Town Sew Simple Shapes

Use when cutting sew-in interfacing
for the Home Town Sew Along



Q-17
2" x 2"
Cut 19



Q-18
4 1/4" x 6 1/2"
Cut 1



Q-19
3" x 7"
Cut 1



Q-20
3 3/4" x 6 1/2"
Cut 1



Q-21
2" x 3 1/2"
Cut 6



Q-22
2" x 3"
Cut 10



Q-23
2 1/2" x 4 1/2"
Cut 4



Q-24
2" x 3"
Cut 1



Q-25
1 1/2" x 1 1/2"
Cut 2



Q-26
2 1/2" x 3 3/4"
Cut 1



Q-27
2" x 2 3/4"
Cut 2



Q-28
1 1/2" x 2 1/2"
Cut 14



Q-29
1 1/2" x 2 1/2"
Cut 3



Q-30
2" x 2 1/2"
Cut 1



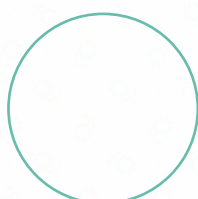
Q-31
2" x 2"
Cut 7



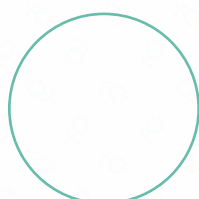
Q-32
1 3/4" x 2"
Cut 1

Cutting Guide for Home Town Sew Simple Shapes

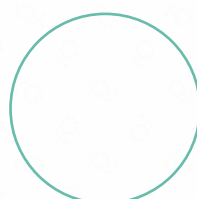
Use when cutting sew-in interfacing
for the Home Town Sew Along



Q-33
2" x 2"
Cut 9



Q-34
2 ½" x 2 ½"
Cut 4



Q-35
3" x 3"
Cut 3



Q-36
3 ½" x 3 ½"
Cut 1



Q-37
2" x 5 ½"
Cut 4



Q-38
4" x 4 ½"
Cut 2



Q-39
2 ½" x 3"
Cut 5



Q-40
2 ¾" x 3 ½"
Cut 1



Q-41
2 ¼" x 4 ¼"
Cut 1



Q-42
2 ½" x 2 ½"
Cut 1



Q-43
3" x 4"
Cut 1



Q-44
3 ½" x 3 ½"
Cut 2



Q-45
3 ½" x 3 ½"
Cut 1



Q-46
3 ½" x 4 ½"
Cut 1



Q-47
2 ½" x 2 ½"
Cut 2



Q-48
2 ½" x 4 ½"
Cut 1

Cutting Guide for Home Town Sew Simple Shapes

Use when cutting sew-in interfacing
for the Home Town Sew Along



Q-49
1 ½" x 2"
Cut 1



Q-50
2 ½" x 4 ½"
Cut 1



Q-51
1 ¾" x 2 ¾"
Cut 1



Q-52
3 ½" x 6"
Cut 1



Q-53
1 ½" x 2"
Cut 1



Q-54
2" x 2 ¾"
Cut 3



Q-55
2" x 3"
Cut 2



Q-56
2" x 2"
Cut 1



Q-57
3" x 3 ½"
Cut 1



Q-58
3" x 4"
Cut 2



Q-59
3" x 5"
Cut 1



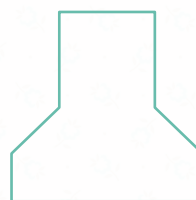
Q-60
3 ½" x 3 ¾"
Cut 2



Q-61
3" x 3 ¾"
Cut 2



Q-62
3" x 3 ½"
Cut 1



Q-63
3 ½" x 3 ½"
Cut 5

Strip Cutting Guide for Bias Tape Makers

For ¼"
Bias Tape Maker

...
Cut
⅝" Wide

For ½"
Bias Tape Maker

...
Cut
1" Wide

For ¾"
Bias Tape Maker

...
Cut
1 ¼" Wide

For 1"
Bias Tape Maker

...
Cut
1 ⅞" Wide

DMC Embroidery Floss

DMC 611 Floss

Bee's Antennas
Tea Bag String
Bird's Eye

*When sewing on buttons, use matching embroidery floss from your stash or matching thread.

Stay up-to-date on all Lori Holt
happenings and projects:

 Visit Lori's Blog at BeelInMyBonnetCo.blogspot.com

 Subscribe to the Lori Holt YouTube channel

 Follow her on Instagram at @beelori1

Share your quilt using hashtags #hometownfabric,
#hometownsewalong, #rileyblakedesigns, and #iloverileyblake

Home Town Sew Along Guide



Sewing Blocks Together and Adding Borders:

The center of this quilt is arranged in rows of like-sized blocks separated by sashing strips.

A 1 ½" x 5 ½" vertical sashing strip is placed between the pieced blocks and on each end of the rows of pieced blocks.

A 1 ½" x 14 ½" vertical sashing strip is placed between the appliquéd blocks and on each end of the rows of appliquéd blocks.

The rows of blocks are separated by a 1 ½" x 61 ½" horizontal sashing strip.

A 1 ½" x 61 ½" horizontal sashing strip is placed at the top and bottom of the quilt center as well.

On the following page you will see a border layout diagram.

Add the Side Borders first, then the Top and Bottom Borders.

Quilt as desired and finish with Sea Glass Large Vintage Trim™ and Binding.

Enjoy your Home Town Quilt!!

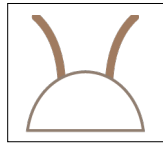
Home Town Sew Along Guide



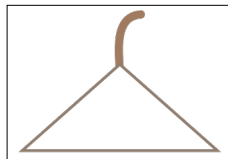
Home Town Sew Along Guide

Embroidery and Trim Guide

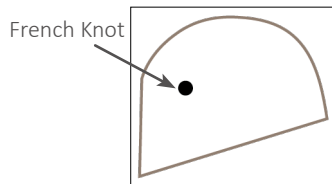
*Lori used 3 strands of floss and a backstitch to embroider.



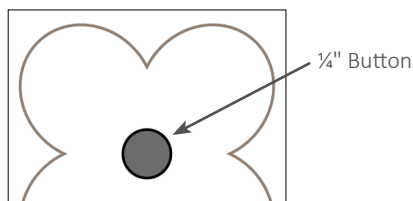
Bee Antennas



Teabag String



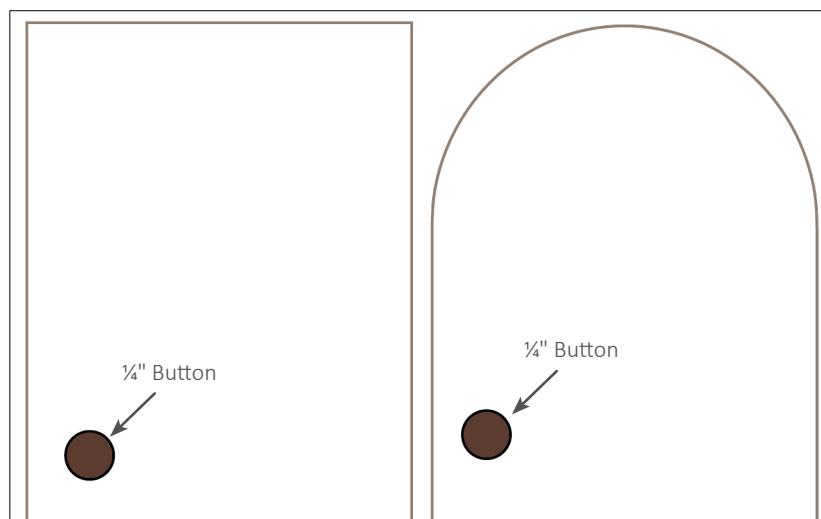
Bird's Eye



Flower Centers

This should
measure
1 inch.

*Tape these patterns onto Lori's Easy Trace™ Light Box. Trace lines directly onto fabric with a mechanical pencil. Your embroidery will cover the pencil lines!



Doorknobs

