



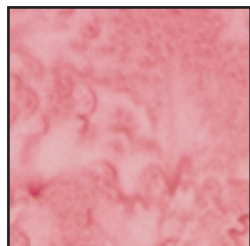
RBD Block Challenge

Fabric Requirements

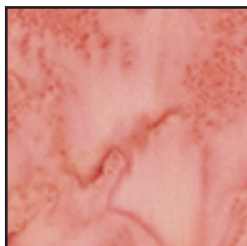
Below is the list of [Expressions Hand-Dyes](#) and the yardage we used to make the quilt. Pick your favorite basic or collection to make your own.



BTCB210 Snow White
2 1/2 Yds



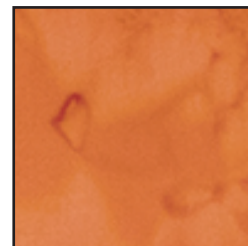
BTHH128 Salmon
1/3 Yd



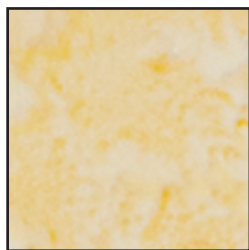
BTHH130 Coral
1/4 Yd



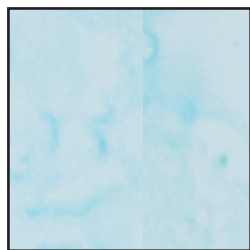
BTHH117 Pink 2
1/4 Yd



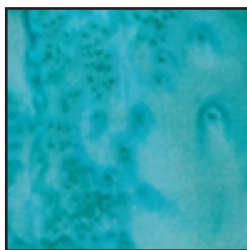
BTHH133 Mandarin
1/4 Yd



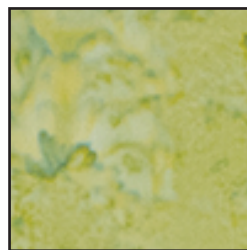
BTHH142 Dijon
1/3 Yd



BTHH158 Pale Turquoise
1/4 Yd



BTHH168 Light Teal
3/4 Yd
(Includes Binding)

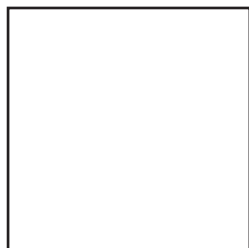


BTHH151 Sage
1/4 Yd

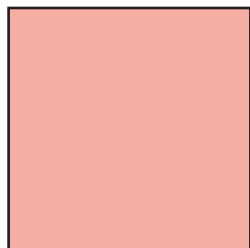


BTHH153 Lemongrass
1/4 Yd

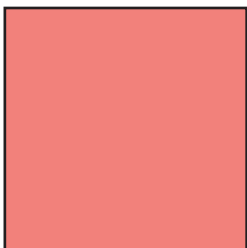
Alternative version in Confetti Cotton Solids



C120 Riley White
2 1/2 Yds



C120 Apricot Blush
1/3 Yd



C120 Lipstick
1/4 Yd

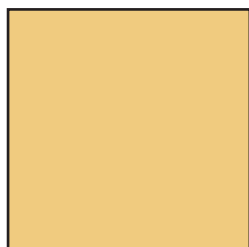
*C120 Riley Coral



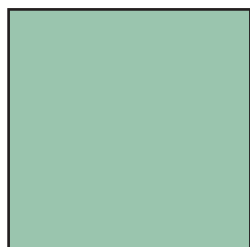
C120 Jazzberry
1/4 Yd



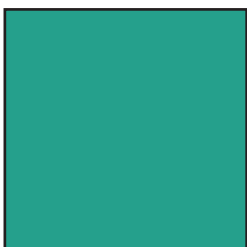
C120 Rouge
1/4 Yd



C120 Honey
1/3 Yd



C120 Seafoam
1/4 Yd



C120 Rain Forest
3/4 Yd
(Includes Binding)



C120 Lettuce
1/4 Yd



C120 Basil
1/4 Yd



RBD Block Challenge

Block Cutting Requirements

Below are the cutting requirements for each quilt block. We're using [Expressions Hand-Dyes](#) to make our blocks. Each designer will be choosing their own fabrics, so every version, including yours will be unique and awesome!

Block 1

BTCB210 Snow White:
(2) 3" squares
(8) 2½" x 3½" squares
BTHH128 Salmon:
(8) 2½" squares
BTHH168 Light Teal:
(2) 3" squares
BTHH130 Coral &
BTHH133 Mandarin:
(2) 2" squares
BTHH117 Pink 2,
BTHH142 Dijon, BTHH158
Pale Turquoise, & BTHH152
Lemongrass:
(3) 2" squares

Block 2

BTCB210 Snow White:
(8) 2" squares
(14) 2½" squares
(4) 1½" x 5" rectangles
BTHH128 Salmon:
(4) 2½" squares
BTHH117 Pink 2:
(4) 2½" squares
BTHH133 Mandarin:
(2) 2½" squares
BTHH142 Dijon:
(1) 1½" square
BTHH158 Pale Turquoise:
(4) 2½" squares

Block 3

BTCB210 Snow White:
(8) 2" squares
(4) 2½" squares
(2) 2" x 7½" rectangles
BTHH130 Coral:
(4) 2½" squares
BTHH133 Mandarin:
(2) 2½" squares
BTHH158 Pale Turquoise:
(2) 2½" squares
BTHH168 Light Teal:
(2) 2" x 10½" rectangles
BTHH151 Sage:
(2) 1" x 7½" rectangles
BTHH153 Lemongrass:
(2) 1" x 6½" rectangles

Block 4

BTCB210 Snow White:
(3) 2½" squares
(10) 1½" squares
(2) 1" x 2½" rectangles
(4) 2" x 5" rectangles
(1) 1" x 9½" rectangle
(2) 1" x 5½" rectangles
BTHH133 Mandarin:
(6) 2" squares
(1) 1½" x 9½" rectangle
BTHH142 Dijon:
(3) 2½" squares
(1) 1" x 9½" rectangle
BTHH151 Sage:
(2) 1½" x 4½" rectangles
BTHH153 Lemongrass:
(2) 1½" x 4½" rectangles
(1) 2" x 9½" rectangle
(1) 1½" x 5½" rectangle

Block 5

BTCB210 Snow White:
(4) 3" squares
(4) 1½" x 6½" rectangles
(4) 2½" squares
BTHH128 Salmon:
(2) 3" squares
BTHH133 Mandarin:
(1) 2½" square
BTHH168 Light Teal:
(2) 3" squares
(4) 1½" x 6½" rectangles

Block 6

BTCB210 Snow White:
(8) 3" squares
BTHH130 Coral:
(4) 3" squares
BTHH117 Pink 2:
(4) 3" squares
BTHH158 Pale Turquoise:
(4) 2½" x 4½" rectangles
BTHH168 Light Teal:
(1) 2½" square

Block 7

BTCB210 Snow White:
(8) 2" squares
BTHH128 Salmon:
(4) 2" squares
BTHH130 Coral:
(4) 2" x 4½" rectangles
BTHH117 Pink 2:
(2) 3" squares
BTHH142 Dijon:
(4) 3½" squares
BTHH158 Pale Turquoise:
(2) 3" squares
BTHH151 Sage:
(4) 2" x 4½" rectangles
BTHH153 Lemongrass:
(4) 2" squares

Block 8

BTCB210 Snow White:
(2) 3½" squares
(4) 3" x 5½" rectangles
BTHH128 Salmon:
(4) 3" squares
BTHH117 Pink 2:
(4) 3" squares
BTHH141 Dijon:
(1) 3½" square
BTHH158 Pale Turquoise:
(1) 3½" square
BTHH151 Sage:
(2) 3" squares
BTHH153 Lemongrass:
(2) 3" squares

Block 9

BTCB210 Snow White:
(4) 2¾" squares
(4) 3¼" squares
(4) 1½" x 2¾" rectangles
BTHH128 Salmon:
(2) 3¼" squares
BTHH133 Mandarin:
(4) 3¼" squares
BTHH158 Pale Turquoise:
(4) 1½" x 2¾" rectangles
(1) 1½" square
BTHH151 Sage:
(2) 3¼" squares

Block 10

BTCB210 Snow White:
(3) 2½" x 4½" rectangles
(6) 2½" squares
BTHH128 Salmon:
(6) 2½" squares
BTHH133 Mandarin:
(3) 2½" x 4½" rectangles
BTHH142 Dijon:
(3) 2½" x 4½" rectangles
BTHH158 Pale Turquoise:
(6) 2½" squares
BTHH168 Light Teal:
(1) 2½" square
BTHH151 Sage:
(6) 2½" squares
BTHH152 Lemongrass:
(3) 2½" x 4½" rectangles

Block 11

BTCB210 Snow White:
(16) 1¾" squares
(4) 1¾" x 3" rectangles
(4) 3½" squares
(4) 2¼" squares
BTHH130 Coral:
(2) 1¾" squares
(1) 3½" square
(1) 2¼" square
BTHH133 Mandarin,
BTHH158 Pale Turquoise &
BTHH153 Lemongrass:
(2) 1¾" squares
(1) 3½" square
(1) 2¼" square

Block 12

BTCB210 Snow White:
(2) 3" squares
(8) 2½" squares
BTHH130 Coral:
(4) 2½" squares
BTHH133 Mandarin:
(2) 3" squares
BTHH168 Light Teal:
(1) 2½" square
(2) 3" squares
BTHH151 Sage:
(2) 3" squares
(4) 2½" x 6½" rectangles

Block 13

BTCB210 Snow White:
(8) 3" squares
(9) 2½" squares
BTHH130 Coral:
(2) 3" squares
BTHH117 Pink 2:
(2) 2½" x 6½" rectangles
(2) 2½" squares
BTHH158 Pale Turquoise:
(2) 3" squares
BTHH168 Light Teal:
(2) 3" squares
BTHH153 Lemongrass:
(2) 3" squares

Block 14

BTCB210 Snow White:
(8) 3" squares
(4) 3" x 5½" rectangles
BTHH128 Salmon:
(1) 1½" x 14" strip
BTHH130 Coral:
(1) 1½" x 14" strip
BTHH133 Mandarin:
(1) 1½" x 14" strip
BTHH142 Dijon:
(1) 1½" x 14" strip
BTHH168 Light Teal:
(1) 1½" x 14" strip

Block 15

BTCB210 Snow White:
(12) 2½" squares
BTHH117 Pink 2:
(5) 2½" squares
BTHH142 Dijon:
(4) 2½" x 6½" rectangles
BTHH168 Light Teal:
(4) 2½" squares

Block 16

BTCB210 Snow White:
(4) 2½" squares
(4) 1½" x 3½" rectangles
(4) 1½" x 4½" rectangles
BTHH130 Coral:
(5) 1½" x 2½" rectangles
(1) 1½" x 3½" rectangle
BTHH117 Pink 2:
(1) 1½" x 2½" rectangle
(1) 1½" x 3½" rectangle
(1) 2½" square
BTHH158 Pale Turquoise:
(5) 1½" x 2½" rectangles
(1) 1½" x 3½" rectangle
BTHH168 Light Teal:
(5) 1½" x 2½" rectangles
(1) 1½" x 3½" rectangles
BTHH151 Sage:
(4) 1½" x 2½" rectangles

Finishing

BTCB210 Snow White:
(4) 10½" x WOF strips
Subcut the following in order:
(3) 10½" x 30½" strips
(2) 10½" x 20½" strips
(1) 10½" square
BTHH168 Light Teal:
(6) 2¼" x WOF strips
for binding



RBD Block Challenge

Block Cutting Requirements

If you are using our basic, [Confetti Cotton Solids](#) to make your blocks, the cutting requirements are featured below. Each designer will be choosing their own fabrics, so every version, including yours will be unique and awesome!

Block 1

C120 Riley White:
(2) 3" squares
(8) 2½" x 3½" squares
C120 Apricot Blush:
(8) 2½" squares
C120 Rain Forest:
(2) 3" squares
C120 Lipstick & C120 Rouge:
(2) 2" squares
C120 Jazzberry,
C120 Honey, C120 Seafoam,
& C120 Basil
(3) 2" squares

Block 2

C120 Riley White:
(8) 2" squares
(14) 2½" squares
(4) 1½" x 5" rectangles
C120 Apricot Blush:
(4) 2½" squares
C120 Jazzberry:
(4) 2½" squares
C120 Rouge:
(2) 2½" squares
C120 Honey:
(1) 1½" square
C120 Seafoam:
(4) 2½" squares

Block 3

C120 Riley White:
(8) 2" squares
(4) 2½" squares
(2) 2" x 7½" rectangles
C120 Lipstick:
(4) 2½" squares
C120 Rouge:
(2) 2½" squares
C120 Seafoam:
(2) 2½" squares
C120 Rain Forest:
(2) 2" x 10½" rectangles
C120 Lettuce:
(2) 1" x 7½" rectangles
C120 Basil:
(2) 1" x 6½" rectangles

Block 4

C120 Riley White:
(3) 2½" squares
(10) 1½" squares
(2) 1" x 2½" rectangles
(4) 2" x 5" rectangles
(1) 1" x 9½" rectangle
(2) 1" x 5½" rectangles
C120 Rouge:
(6) 2" squares
(1) 1½" x 9½" rectangle
C120 Honey:
(3) 2½" squares
(1) 1" x 9½" rectangle
C120 Lettuce:
(2) 1½" x 4½" rectangles
C120 Basil:
(2) 1½" x 4½" rectangles
(1) 2" x 9½" rectangle
(1) 1½" x 5½" rectangle

Block 5

C120 Riley White:
(4) 3" squares
(4) 1½" x 6½" rectangles
(4) 2½" squares
C120 Apricot Blush:
(2) 3" squares
C120 Rouge:
(1) 2½" square
C120 Rain Forest:
(2) 3" squares
(4) 1½" x 6½" rectangles

Block 6

C120 Riley White:
(8) 3" squares
C120 Lipstick:
(4) 3" squares
C120 Jazzberry:
(4) 3" squares
C120 Seafoam:
(4) 2½" x 4½" rectangles
C120 Rain Forest:
(1) 2½" square

Block 7

C120 Riley White:
(8) 2" squares
C120 Apricot Blush:
(4) 2" squares
C120 Lipstick:
(4) 2" x 4½" rectangles
C120 Jazzberry:
(2) 3" squares
C120 Honey:
(4) 3½" squares
C120 Seafoam:
(2) 3" squares
C120 Lettuce:
(4) 2" x 4½" rectangles
C120 Basil:
(4) 2" squares

Block 8

C120 Riley White:
(2) 3½" squares
(4) 3" x 5½" rectangles
C120 Apricot Blush:
(4) 3" squares
C120 Jazzberry:
(4) 3" squares
C120 Honey:
(1) 3½" square
C120 Seafoam:
(1) 3½" square
C120 Lettuce:
(2) 3" squares
C120 Basil:
(2) 3" squares

Block 9

C120 Riley White:
(4) 2¾" squares
(4) 3¼" squares
(4) 1½" x 2¾" rectangles
C120 Apricot Blush:
(2) 3¼" squares
C120 Rouge:
(4) 3¼" squares
C120 Seafoam:
(4) 1½" x 2¾" rectangles
(1) 1½" square
C120 Lettuce:
(2) 3¼" squares

Block 10

C120 Riley White:
(3) 2½" x 4½" rectangles
(6) 2½" squares
C120 Apricot Blush:
(6) 2½" squares
C120 Rouge:
(3) 2½" x 4½" rectangles
C120 Honey:
(3) 2½" x 4½" rectangles
C120 Seafoam:
(6) 2½" squares
C120 Rain Forest:
(1) 2½" square
C120 Lettuce:
(6) 2½" squares
C120 Basil:
(3) 2½" x 4½" rectangles

Block 11

C120 Riley White:
(16) 1¾" squares
(4) 1¾" x 3" rectangles
(4) 3½" squares
(4) 2¼" squares
C120 Lipstick:
(2) 1¾" squares
(1) 3½" square
(1) 2¼" square
C120 Rouge, C120 Seafoam,
C120 Basil:
(2) 1¾" squares
(1) 3½" square
(1) 2¼" square

Block 12

C120 Riley White:
(2) 3" squares
(8) 2½" squares
C120 Lipstick:
(4) 2½" squares
C120 Rouge:
(3) 3" squares
C120 Rain Forest:
(1) 2½" square
(2) 3" squares
C120 Lettuce:
(2) 3" squares
(4) 2½" x 6½" rectangles

Block 13

C120 Riley White:
(8) 3" squares
(9) 2½" squares
C120 Lipstick:
(2) 3" squares
C120 Jazzberry:
(2) 2½" x 6½" rectangles
(2) 2½" squares
C120 Seafoam:
(2) 3" squares
C120 Rain Forest:
(2) 3" squares
C120 Basil:
(2) 3" squares

Block 14

C120 Riley White:
(8) 3" squares
(4) 3" x 5½" rectangles
C120 Apricot Blush:
(1) 1½" x 14" strip
C120 Lipstick:
(1) 1½" x 14" strip
C120 Rouge:
(1) 1½" x 14" strip
C120 Honey:
(1) 1½" x 14" strip
C120 Rain Forest:
(1) 1½" x 14" strip

Block 15

C120 Riley White:
(12) 2½" squares
C120 Jazzberry:
(5) 2½" squares
C120 Honey:
(4) 2½" x 6½" rectangles
C120 Rain Forest:
(4) 2½" squares

Block 16

C120 Riley White:
(4) 2½" squares
(4) 1½" x 3½" rectangles
(4) 1½" x 4½" rectangles
C120 Lipstick:
(5) 1½" x 2½" rectangles
(1) 1½" x 3½" rectangle
C120 Jazzberry:
(1) 1½" x 2½" rectangle
(1) 1½" x 3½" rectangle
(1) 2½" square
C120 Seafoam:
(5) 1½" x 2½" rectangles
(1) 1½" x 3½" rectangle
C120 Rain Forest:
(5) 1½" x 2½" rectangles
(1) 1½" x 3½" rectangles
C120 Lettuce:
(4) 1½" x 2½" rectangles

Finishing

C120 Riley White:
(4) 10½" x WOF strips
Subcut the following in order:
(3) 10½" x 30½" strips
(2) 10½" x 20½" strips
(1) 10½" square
C120 Rain Forest:
(6) 2¼" x WOF strips
for binding