

SWEET & SPIFFY

SKU GUIDE

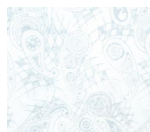
Splatter

Batiks by Riley Blake Designs

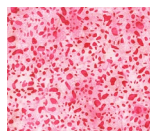
Bold graphic designs paired with favorite saturated color combinations!



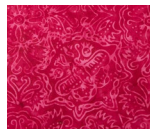
Sweet & Spiffy by Wendy Sheppard
Finished quilt size: 72 ½" × 72 ½"
#KTB1021



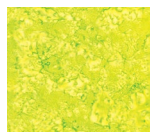
PHLOOF
BT23392-123
4 YARDS
BACKGROUND



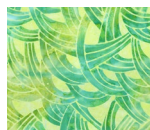
WATERMELON
BT21800-194
¾ YARD
FABRIC A



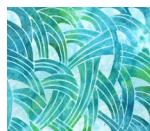
PUNCH
BT21700-198
¾ YARD
FABRIC B



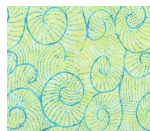
KIWI
BT21000-311
¾ YARD
FABRIC 1



SPRING PEAR
BT23391-326
¾ YARD
FABRIC 2



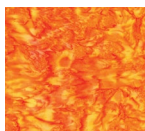
POOL PARTY
BT23391-282
½ YARD
FABRIC 3



WINTER MINT
BT23393-280
¾ YARD
FABRIC 4



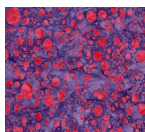
CANARY
BT21000-252
¾ YARD
FABRIC 5



TANGERINE
BT21000-235
¾ YARD
FABRIC 6



CORAL FIESTA
BT23392-243
¾ YARD
FABRIC 7



SPLASH OF GRENADINE
BT23394-183
¾ YARD
FABRIC 8



LOLLIPOP
BT23390-184
¾ YARD
BINDING

NOTES




Riley Blake
 DESIGNS®



Follow us for tutorials on YouTube

www.rileyblakedesigns.com

© 2025 Riley Blake Designs | All Rights Reserved.

This SKU Guide is designed to support the enclosed quilt pattern
 in conjunction with this Riley Blake Designs boxed kit.

Fabric requirements are listed to aid in proper fabric placement for this Riley Blake Designs Kit.

The fabrics and quilt images portrayed are virtual images.

The look of the physical project may differ when using actual fabric.