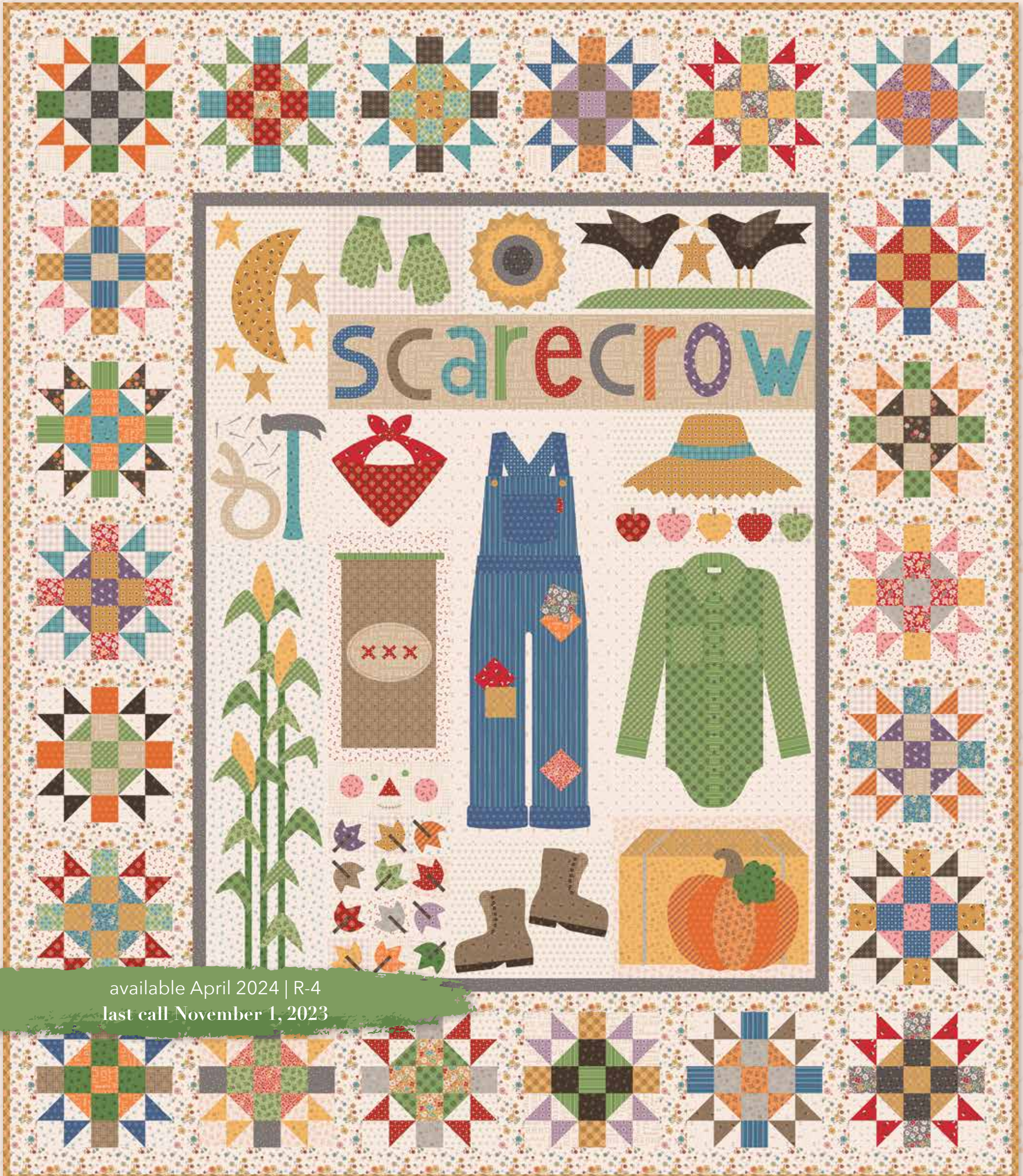


AUTUMN

by Lori Holt of Bee in my Bonnet



available April 2024 | R-4
last call November 1, 2023

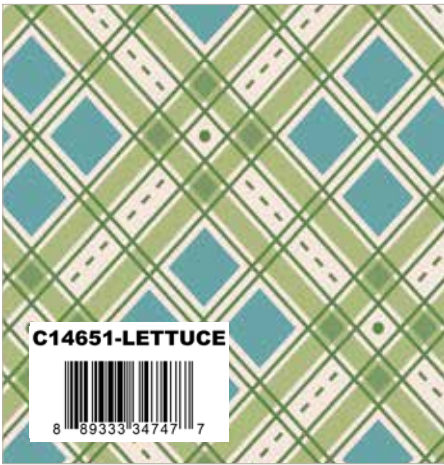
AUTUMN



Latte Floral*



Raisin Floral



Lettuce Plaid



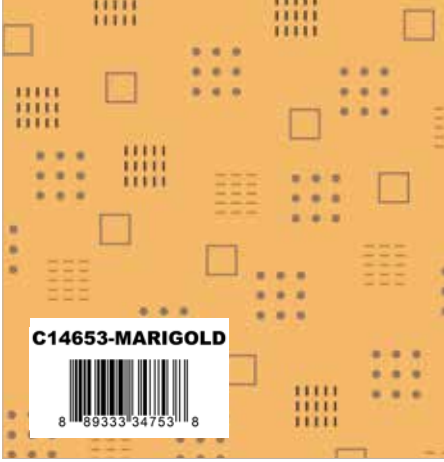
Marigold Plaid



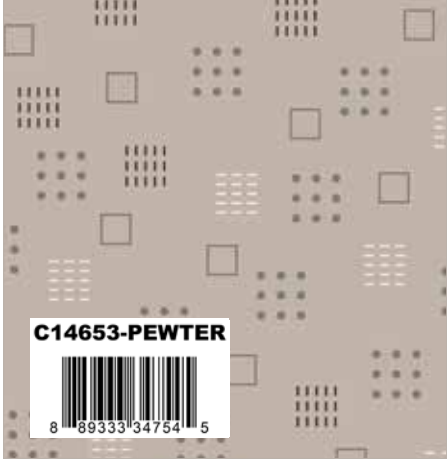
Chestnut Berries



Raindrop Berries*



Marigold Squares*



Pewter Squares



Cider Blossom



Riley Red Blossom*



Coral Posy



Milk Can Posy*



Coral Bouquet



Plum Bouquet



Raindrop Bouquet



Denim Dots



Schoolhouse Dots*



Autumn Stitch



Denim Stitch*



Cider Cosmos*



Milk Can Cosmos



Riley Red Cosmos

AUTUMN



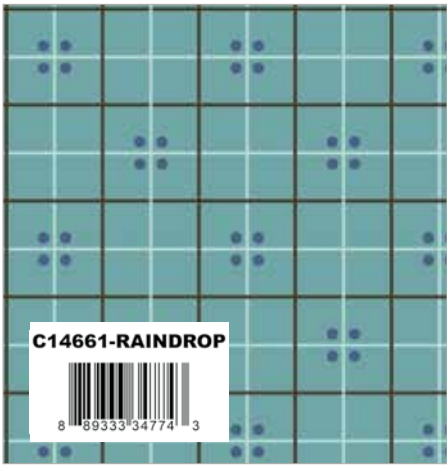
Basil Gingham*



Pumpkin Gingham



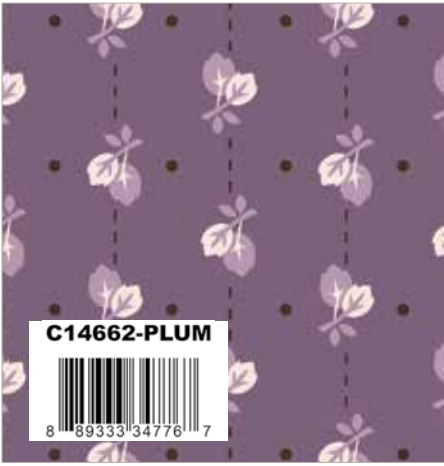
Brown Sugar Homespun



Raindrop Homespun*



Milk Can Leaves



Plum Leaves*



Clover Sprig*



Raisin Sprig



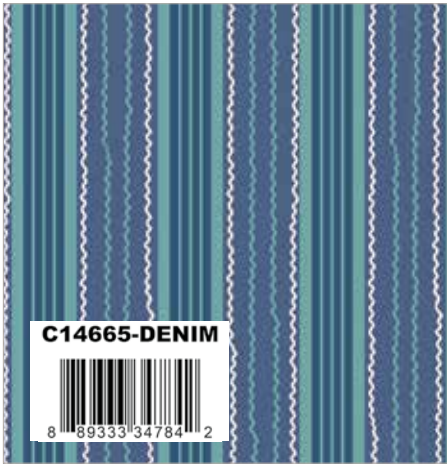
Lettuce Perennial



Yam Perennial*



Basil Stripe



Denim Stripe*



Cider Sunflowers



Taffy Sunflowers



Pumpkin Words*



Tea Dye Words*



Basil Kerchief



Cider Kerchief*



Raisin Kerchief



Schoolhouse Kerchief

Autumn Backgrounds



Latte Berries*



Latte Squares*



Latte Posy*



Latte Stitch*



Latte Sprig*

Autumn Backgrounds



Latte Perennial*



Latte Words



Latte Kerchief*



Latte Maple*



Latte Gunny Sack*

Autumn 107/108" Wide Backs



Denim Cosmos Wide Back



Pumpkin Cosmos Wide Back



Raindrop Floral Wide Back



Tea Dye Floral Wide Back



Latte Words Wide Back

Apples in Autumn 57/58" Home Dec



Multi Apples in Autumn Home Dec

Shown as Repeat 36" x 54"

Pumpkins and Haystacks Kit by Lori Holt



Quilt Size 64½" x 80½"

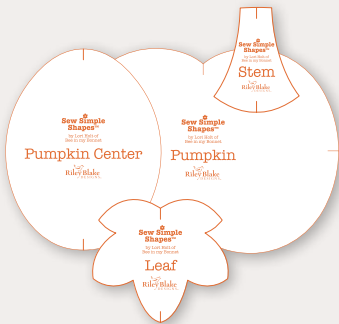


Collector Box Size*: 16" x 13" x 3"

Includes exclusive pattern, Pumpkin Sew Simple Shapes™ and fabric for quilt top and binding

Suggested Backing:
2 Yards WB14672-PUMPKIN Cosmos

AVAILABLE MAY 2024
Limited Quantities Available



Pre-order the
Pumpkins and Haystacks
Quilt Kit



*box design not final and subject to change

Autumn Skies Runner Kit by Lori Holt



Runner Size 28" x 42"



Collectors Box Size: 6" x 10" x 2½"

Includes exclusive pattern and
fabric for runner top and binding

Suggested Backing:
1 Yard WB14673-TEADYE Floral

AVAILABLE MAY 2024
Limited Quantities Available

Pre-order the
Autumn Skies
Runner Kit





Quilt Size 74" x 87"

estimated requirements

Fat 1/8 of Each

- C14650-RAISIN Floral
- C14651-LETTUCE Plaid
- C14652-RAINDROP Berries
- C14653-PEWTER Squares
- C14655-CORAL Posy
- C14656-CORAL Bouquet
- C14656-PLUM Bouquet
- C14656-RAINDROP Bouquet
- C14657-DENIM Dots
- C14658-AUTUMN Stitch
- C14659-CIDER Cosmos
- C14659-MILKCAN Cosmos
- C14659-RILEYRED Cosmos
- C14662-MILKCAN Leaves
- C14662-PLUM Leaves
- C14666-TAFFY Sunflowers

- C14667-PUMPKIN Words
- C14668-RAISIN Kerchief
- C14668-SCHOOL Kerchief
- C120-RILEYGRAY Solid

Fat 1/4 of Each

- C14651-MARIGOLD Plaid
- C14652-CHESTNUT Berries
- C14654-CIDER Blossom
- C14657-SCHOOL Dots
- C14660-PUMPKIN Gingham
- C14661-BROWN Homespun
- C14663-RAISIN Sprig
- C14664-LETTUCE Perennial
- C14664-YAM Perennial
- C14665-BASIL Stripe
- C14665-DENIM Stripe
- C14666-CIDER Sunflowers

- C14667-LATTE Words
- C14668-BASIL Kerchief
- 1/4 Yard of Each**
- C14654-RILEYRED Blossom
- C14658-DENIM Stitch
- C14663-CLOVER Sprig
- C14670-LATTE Gunny Sack
- 3/8 Yard of Each**
- C14660-BASIL Gingham
- C14661-RAINDROP Homespun
- 1/2 Yard of Each**
- C14653-LATTE Squares
- C14653-MARIGOLD Squares
- C14655-LATTE Posy
- C14655-MILKCAN Posy
- C14668-LATTE Kerchief

- 5/8 Yard of Each**
- C14652-LATTE Berries
- C14658-LATTE Stitch
- C14663-LATTE Sprig
- C14667-TEADYE Words
- C14669-LATTE Maple
- Additional Fabrics**
- 1/3 Yard C14664-LATTE Perennial
- 1 1/2 Yards C14650-LATTE Floral
- 3/4 Yard C14668-CIDER Kerchief (Binding)
- 2 3/4 Yards WB14673-RAINDROP (Backing)

NOT A CUTTING GUIDE

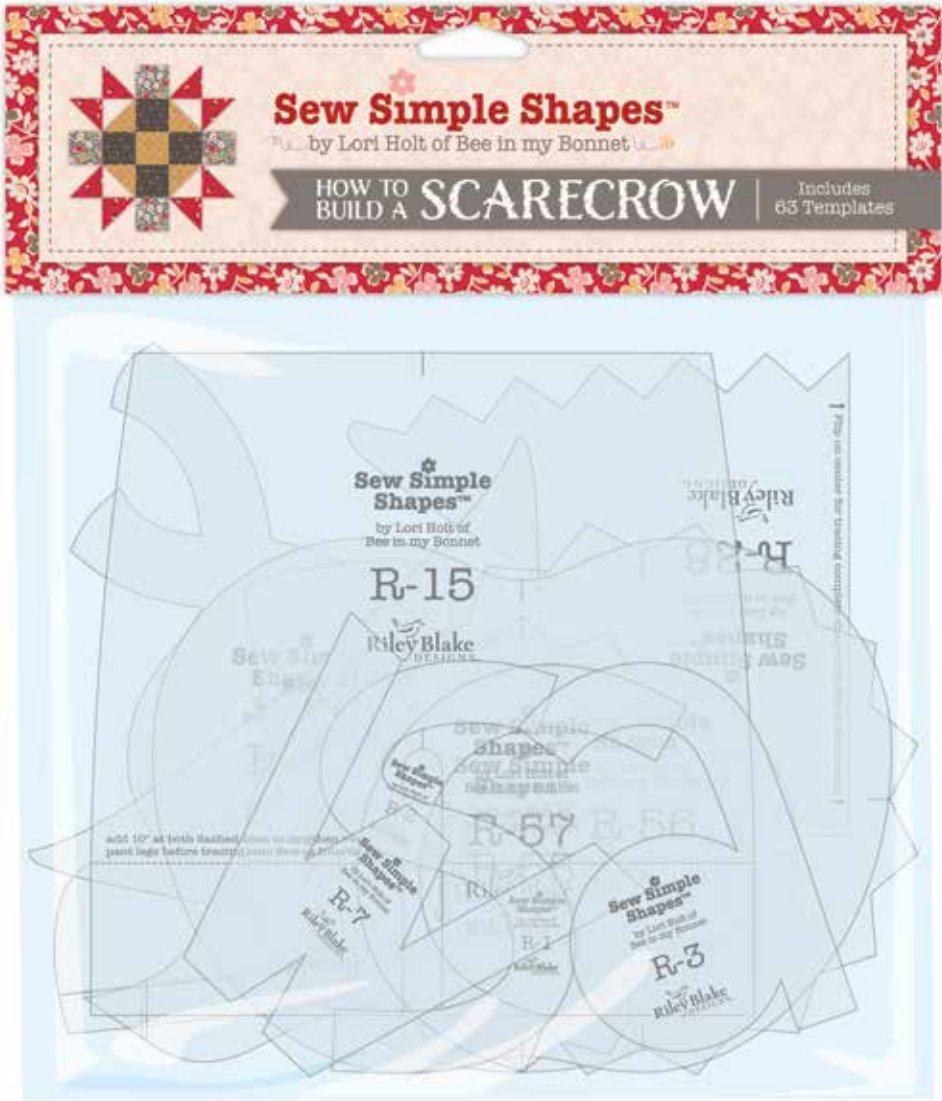
How to Build a Scarecrow Sew Along Products and Notions



Notions Needed/Suggested

- STT-35006 How to Build a Scarecrow Sew Simple Shapes™
- Bias Tape Makers: ¼", ½", ¾" and 1"
- 1 Package ST-21954 Stitch Cute Little Buttons
- 1 Package STB-6023 Cute Little Buttons
- N093 Sue Daley Glue
- ST-4913 Sew-in Interfacing
- N039-7803 Point 2 Point Turner
- TH-LH5080HBE45 Honey Bee Essentials Aurifil Thread Box
- ST-8517 Nifty Needles™
- ST-8644 Pretty Pins™
- ST-33034 Busy Bee Pencils
- ST-33029 Flower Power Magnet Pin Holder
- Bee Keeper Binder
- Trim-it™ Rulers 3½", 4½", 6½", 7½", 8½", 9½", 10½", 12½", 15½", 18½" and 20½"
- Design Boards
- Seams Sew Easy™ Seam Guide
- Honey Bee 5" Scissors
- ST-34011 Sweet Sewing 9" Scissors

How to Build a Scarecrow Sew Simple Shapes™



- 63 Sew Simple Shapes
- Constructed of sturdy plastic
- Features center marks
- Opaque for fussy cutting
- Works great with Lori's Sew-In Interfacing Pack and Precuts
- *MOQ: sold in packs of 6*

Available April 2024

STT-35006



Nifty Needles™



Available Now

ST-8517



Lori Holt 9" Sweet Sewing Scissors

Available December 2023

ST-34011



Point 2 Point Turner



Available Now

N039-7803



Sue Daley Glue



Available Now

N093-GLUE



Honey Bee Essentials
Aurifil Thread Box



Available November 2023

TH-LH5080HBE45



Pretty Pins™



Available Now

ST-8644



Sew-in Interfacing



Available Now

ST-4913



The Quilted Scarecrow by Lori Holt



Quilt Size 80½" x 85½"

estimated requirements

Fat 1/8 of Each

- C14650-RAISIN Floral
- C14651-LETTUCE Plaid
- C14651-MARIGOLD Plaid
- C14652-RAINDROP Berries
- C14653-LATTE Squares
- C14653-MARIGOLD Squares
- C14653-PEWTER Squares
- C14654-CIDER Blossom
- C14655-CORAL Posy
- C14656-CORAL Bouquet
- C14656-RAINDROP Bouquet
- C14658-AUTUMN Stitch
- C14659-CIDER Cosmos
- C14659-RILEYRED Cosmos
- C14660-BASIL Gingham
- C14660-PUMPKIN Gingham
- C14661-RAINDROP Homespun
- C14663-CLOVER Sprig

- C14663-RAISIN Sprig
- C14664-LETTUCE Perennial
- C14664-YAM Perennial
- C14665-BASIL Stripe
- C14667-PUMPKIN Words
- C14667-TEADYE Words
- C14668-BASIL Kerchief
- C14668-CIDER Kerchief
- C14668-SCHOOL Kerchief

Fat 1/4 of Each

- C14652-CHESTNUT Berries
- C14654-RILEYRED Blossom
- C14657-DENIM Dots
- C14659-MILKCAN Cosmos
- C14661-BROWN Homespun
- C14662-MILKCAN Leaves
- C14666-CIDER Sunflowers
- C14668-RAISIN Kerchief

1/3 Yard of Each

- C14655-MILKCAN Posy
- C14657-SCHOOL Dots

Additional Fabrics

- 1/2 Yard C14658-DENIM Stitch
- 5 Yards C14663-LATTE Sprig (Background)
- 1 Yard C14665-DENIM Stripe (Includes Binding)
- 2 5/8 Yards WB14672-DENIM Cosmos (Backing)

Notions

- 1/4 Yard STVT-28244 Pebble Small Vintage Trim
- 1 Package ST-21954 Stitch Cute Little Buttons



Pattern designed by Lori Holt
Published by It's Sew Emma

Pre-order the
P051-QUILTEDSCARECROW
Quilt Pattern



Crows in the Corn by Lori Holt



Quilt Size 69" x 77"

estimated requirements

Fat 1/8 of Each

- C14651-LETTUCE Plaid
- C14651-MARIGOLD Plaid
- C14652-CHESTNUT Berries
- C14652-RAINDROP Berries
- C14653-MARIGOLD Squares
- C14653-PEWTER Squares
- C14654-CIDER Blossom
- C14654-RILEYRED Blossom
- C14655-CORAL Posy
- C14656-CORAL Bouquet
- C14656-PLUM Bouquet
- C14656-RAINDROP Bouquet
- C14657-DENIM Dots
- C14657-SCHOOL Dots
- C14658-AUTUMN Stitch
- C14658-DENIM Stitch
- C14659-CIDER Cosmos
- C14659-MILKCAN Cosmos

- C14659-RILEYRED Cosmos
- C14660-BASIL Gingham
- C14660-PUMPKIN Gingham
- C14661-BROWN Homespun
- C14661-RAINDROP Homespun
- C14662-PLUM Leaves
- C14663-CLOVER Sprig
- C14664-LETTUCE Perennial
- C14664-YAM Perennial
- C14665-BASIL Stripe
- C14665-DENIM Stripe
- C14666-TAFFY Sunflowers
- C14667-PUMPKIN Words
- C14667-TEADYE Words
- C14668-BASIL Kerchief
- C14668-CIDER Kerchief
- C14668-SCHOOL Kerchief

1/2 Yard of Each

- C14655-MILKCAN Posy
- C14662-MILKCAN Leaves
- C14663-RAISIN Sprig
- C14668-RAISIN Kerchief

Additional Fabrics

- 1 5/8 Yards C14666-CIDER Sunflowers
- 3/4 Yard C14652-LATTE Berries (Background)
- 1 Yard C14670-LATTE Gunny Sack (Background)
- 1 1/8 Yards C14669-LATTE Maple (Background)
- 7/8 Yard C14650-RAISIN Floral (Binding)
- 2 1/4 Yards WB14674-LATTE Words (Backing)

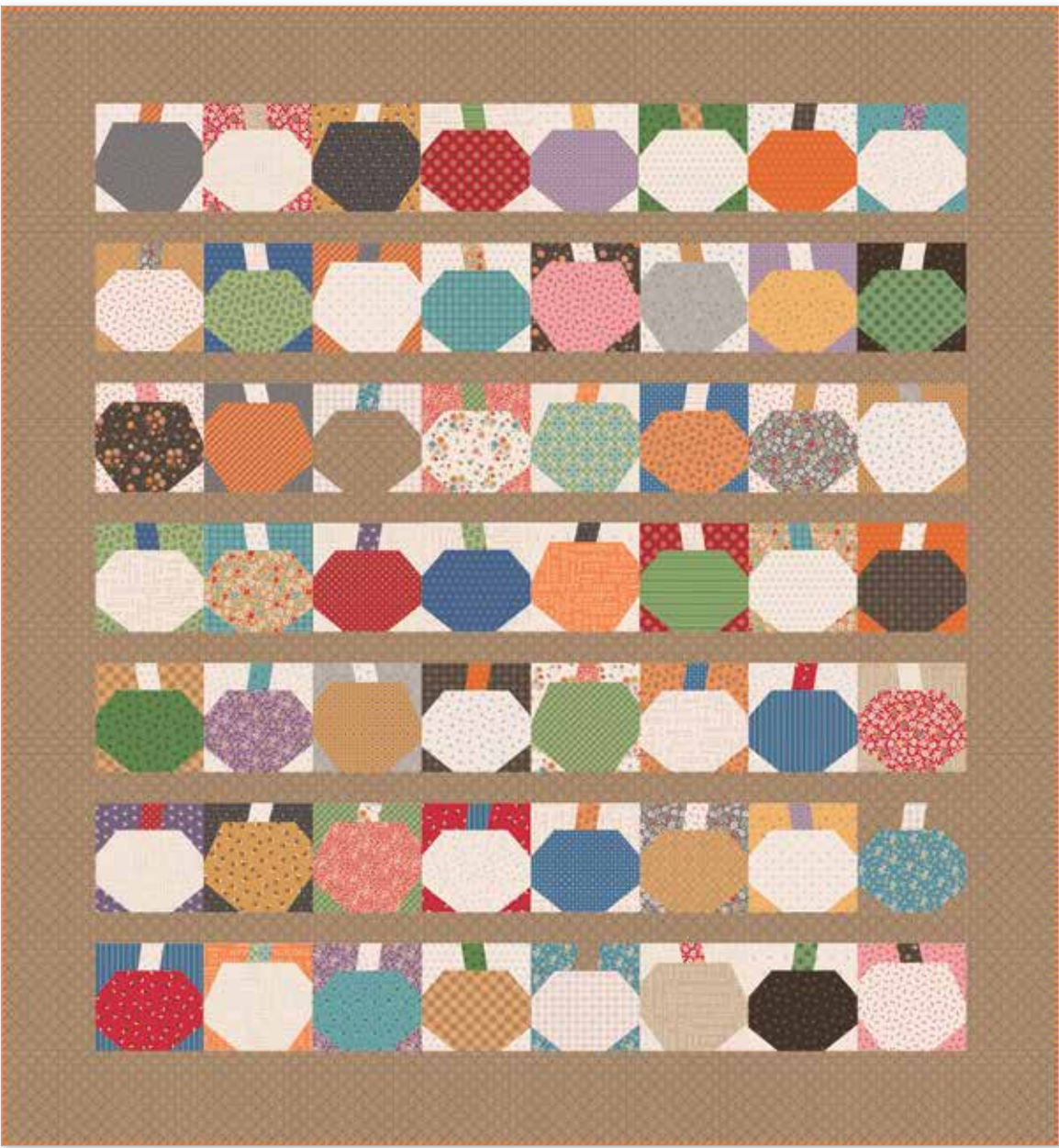


Pattern designed by Lori Holt
Published by It's Sew Emma

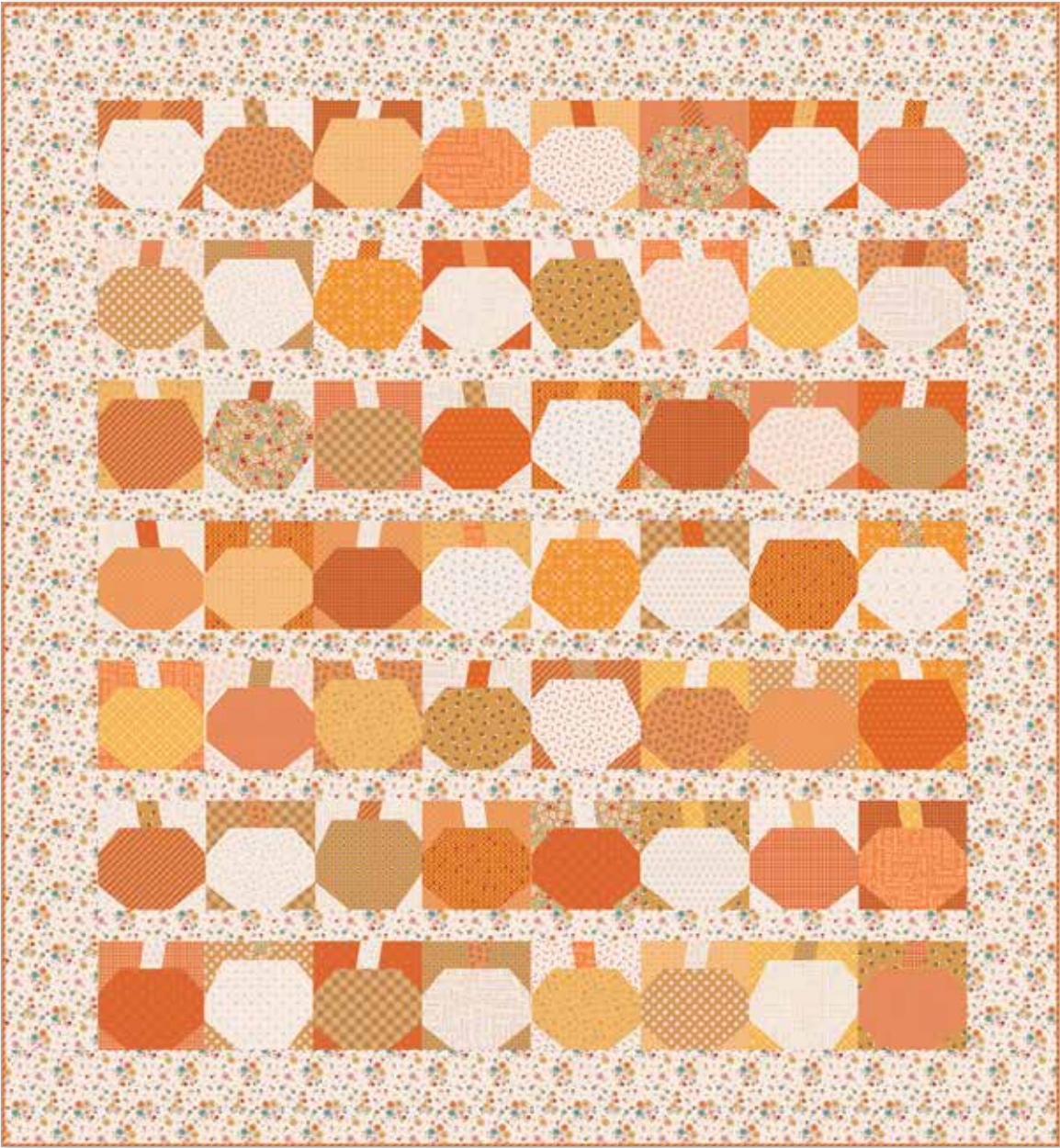
Pre-order the
P051-CROWSINTHECORN
Quilt Pattern



Pumpkin Paper Quilts by Lori Holt



Quilt Size 68" x 73"



Quilt Size 68" x 73"

estimated requirements

SCRAPPY QUILT

(1) 10-14650-42 10" Stacker

10" x 20" Cut of Each

C14652-LATTE Berries	C14664-LATTE Perennial
C14653-LATTE Squares	C14667-LATTE Words
C14655-LATTE Posy	C14668-LATTE Kerchief
C14658-LATTE Stitch	C14669-LATTE Maple
C14663-LATTE Sprig	C14670-LATTE Gunny Sack

Additional Fabrics

2 Yards C14661-BROWN Homespun
5/8 Yard C14660-PUMPKIN Gingham (Binding)
2 1/8 Yards WB14673-RAINDROP Floral (Backing)

TONAL QUILT

10" x 20" Cut of Each

<i>AUTUMN</i>	<i>BEE DOTS</i>
C14652-LATTE Berries	C14164-TERRACOTTA Elvira
C14653-LATTE Squares	C14165-CIDER Verona
C14653-MARIGOLD Squares	C14168-YAM Thelma
C14654-CIDER Blossom	C14179-MARIGOLD Frances
C14655-LATTE Posy	
C14658-AUTUMN Stitch	<i>BEE PLAIDS</i>
C14658-LATTE Stitch	C12024-AUTUMN Zinnia
C14659-CIDER Cosmos	C12025-AUTUMN Harvest
C14660-PUMPKIN Gingham	C12026-AUTUMN October
C14663-LATTE Sprigs	C12029-MACNCHEESE
C14664-LATTE Perennial	Homemade
C14664-YAM Perennial	C12035-DAISY Sunflower
C14666-CIDER Sunflowers	
C14667-LATTE Words	<i>BEE CROSS STITCH</i>
C14667-PUMPKIN Words	C745-Autumn
C14668-CIDER Kerchief	
C14669-LATTE Maple	
C14670-LATTE Gunny Sack	

Additional Fabrics

2 Yards C14650-LATTE Floral
5/8 Yard C14660-PUMPKIN Gingham (Binding)
2 1/8 Yards WB9709-GREEN Prim (Backing)

Both of these products are needed to complete each Paper Pumpkin Quilt

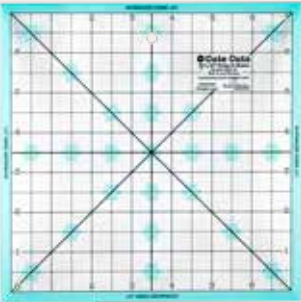
10" Pumpkin Quilt Paper

This iron-on Pumpkin Quilt Paper helps you cut out pumpkins from 10" Stackers at unique angles to reassemble as a fun 7" finished Pumpkin Quilt Block!

- 42 sheets per package
- Includes instructions for block and quilt setting
- *MOQ: sold in packs of 5*



10" Pumpkin
Quilt Paper
Available April 2024



7 1/2" Trim-it™ Ruler
Available Now



New Products and Notions

Autumn Washi Tape



- Set of (4) 10-yard rolls
- Sizes: (2) 10mm and (2) 15mm
- The perfect companion to Lori's Crafting Paper Pads
- A wonderful addition to your craft supplies and projects
- *MOQ: sold in packs of 4*

Available April 2024

ST-34995



Autumn Project Bag



- Dimensions: Approximately 9" x 12"
- Lovely vinyl zipper bag
- Lined
- Perfect for cosmetics, sewing, cross stitch, or punch needle supplies and projects
- *MOQ: sold in packs of 5*

Available April 2024

ST-35008



Scarecrow Needle Minder



- Holds your needle in place on your hoop
- Dependable magnets attach securely to your fabric
- Can double as a darling refrigerator magnet
- Dimensions: 2" x 5"
- *MOQ: sold in packs of 5*

Available April 2024

ST-35007



Autumn Bee Keeper Binder



- Use for How to Build a Scarecrow Sew Along
- Excellent for storing and organizing Sew Simple Shapes™, patterns, sew along instructions and more
- Use with Lori's Bee Keeper Binder Insert Pockets (Sold Separately/ST-17850)
- Use with Lori's Sew & Stich Binder Calendar (Sold Separately/ST-35021)
- Dimensions: 12¼" x 11½" x 2¾"
- Three-ring closures keep pages secure
- *MOQ: sold in packs of 4*

Binder Pocket Inserts



Available Now

ST-17850



- *MOQ: sold in packs of 5*

Autumn Enamel Tin Mug



- Charming enamel tin mug
- Perfect for your favorite beverage or for storing pens and other items
- Hand-wash only
- 20-ounces
- *MOQ: sold in packs of 6*

Available April 2024

ST-34997



Autumn Happy Charms™

Use Lori's Happy Charms on zipper pulls, key chains, and so much more!



Sunflower

- Dimensions: 1½" x 2"
- *MOQ: sold in packs of 10*

Available April 2024

ST-34994



Apple

- Dimensions: 1½" x 1¾"
- *MOQ: sold in packs of 10*

Available April 2024

ST-34992



Jar

- Dimensions: 1" x 2"
- *MOQ: sold in packs of 10*

Available April 2024

ST-34993



New Products and Notions

Autumn Design Boards



Available April 2024

	Cider	Denim
	DB-34998	DB-34999
18-Inch		
	Raindrop	Coral
	DB-35000	DB-35001
14-Inch		
	Schoolhouse	Milk Can
	DB-35002	DB-35003
10-Inch		
	Pewter	Pumpkin
	DB-35004	DB-35005
7-Inch		

- Audition fabric for blocks
- Organize blocks that are cut and ready to sew
- Stack easily for storing
- Available in 4 sizes for different blocks
- *MOQ: sold in packs of 5*

2024 Sew & Stitch Binder Calendar
Keep track of sew alongs, projects, and more!



- 8 ½" x 11"
- Individual pages
- Monthly calendar: January 2024 to December 2024
- Large enough to write in important dates and reminders
- Three-hole punched individual pages
- Fits perfectly into Lori's assortment of Bee Keeper Binders
- Use with Lori's Busy Bee Quilt, Stitch, and Yarn Pages
- Printed in the USA on premium paper
- *MOQ: sold in packs of 5*

Available October 2023



Busy Bee Quilt Binder Pages



Available October 2023



Busy Bee Stitch Binder Pages



Available October 2023



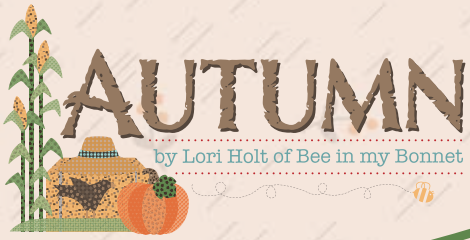
Busy Bee Yarn Binder Pages



Available October 2023



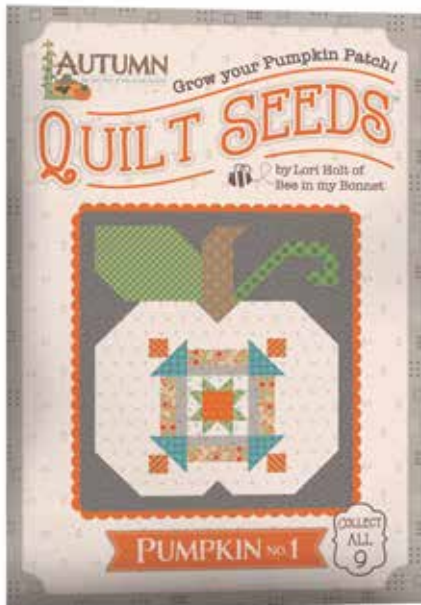
- 8 ½" x 11"
- Three-hole punched individual pages
- Fits perfectly into Lori's assortment of Bee Keeper Binders
- Use with Lori's 2024 Sew & Stitch Binder Calendar
- Printed in the USA on premium paper
- *MOQ: sold in packs of 5*



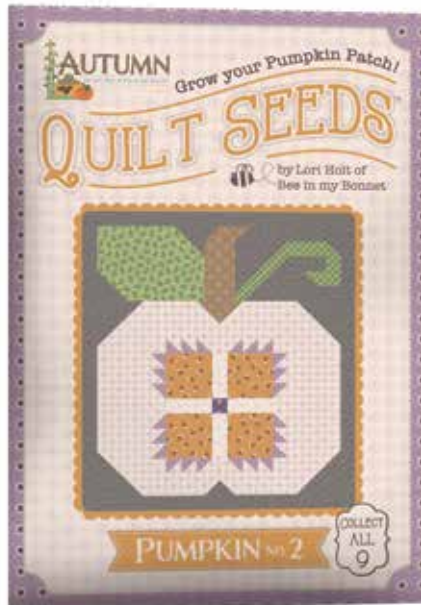
QUILT SEEDS™

by Lori Holt of
Bee in my Bonnet

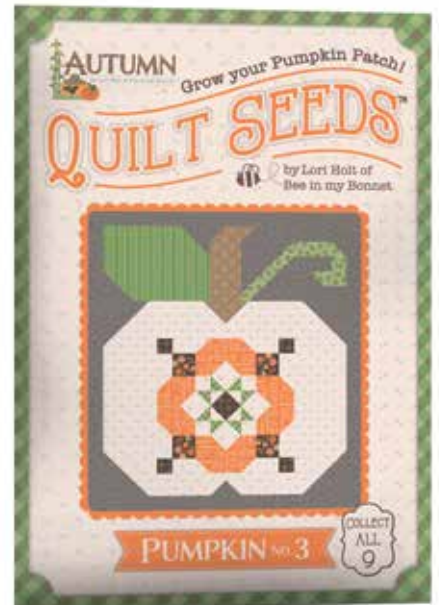
AVAILABLE APRIL 2024



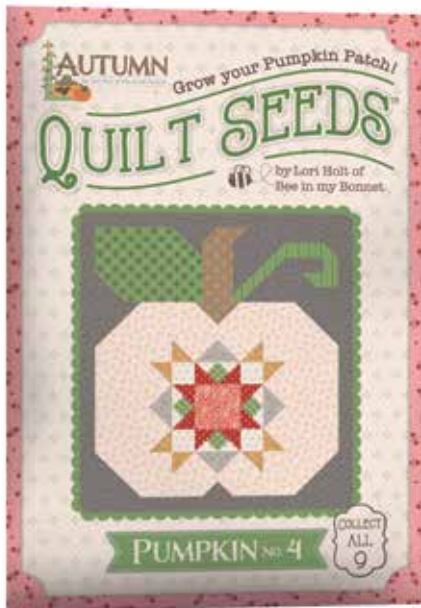
ST-35010



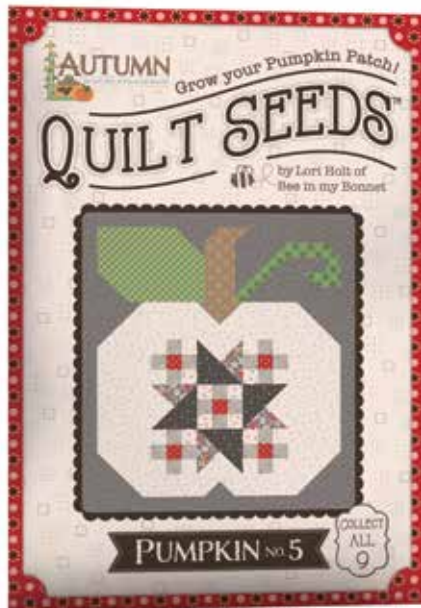
ST-35011



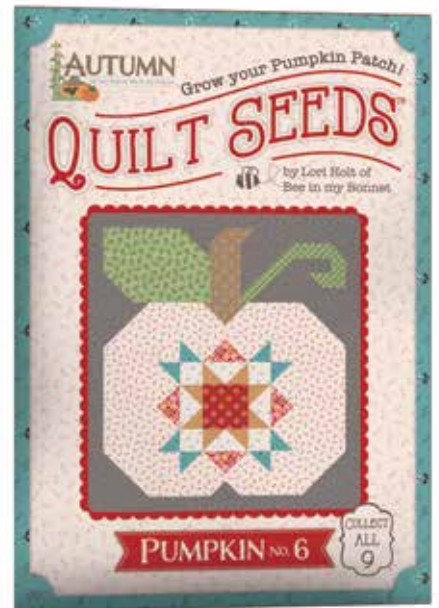
ST-35012



ST-35013



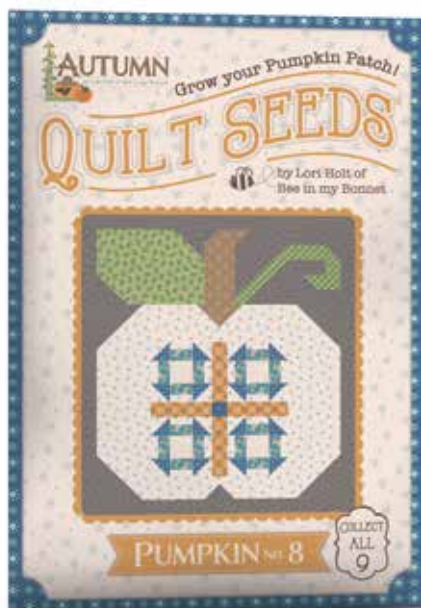
ST-35014



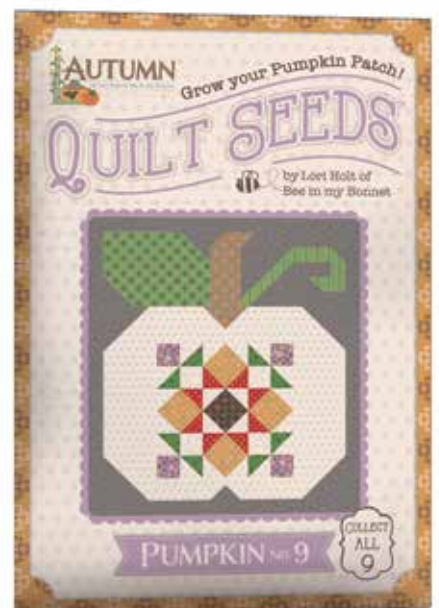
ST-35015



ST-35016



ST-35017



ST-35018



Autumn Quilt Seeds™ Patterns

We're very excited to introduce you to the next set of Lori's popular Quilt Seeds™.

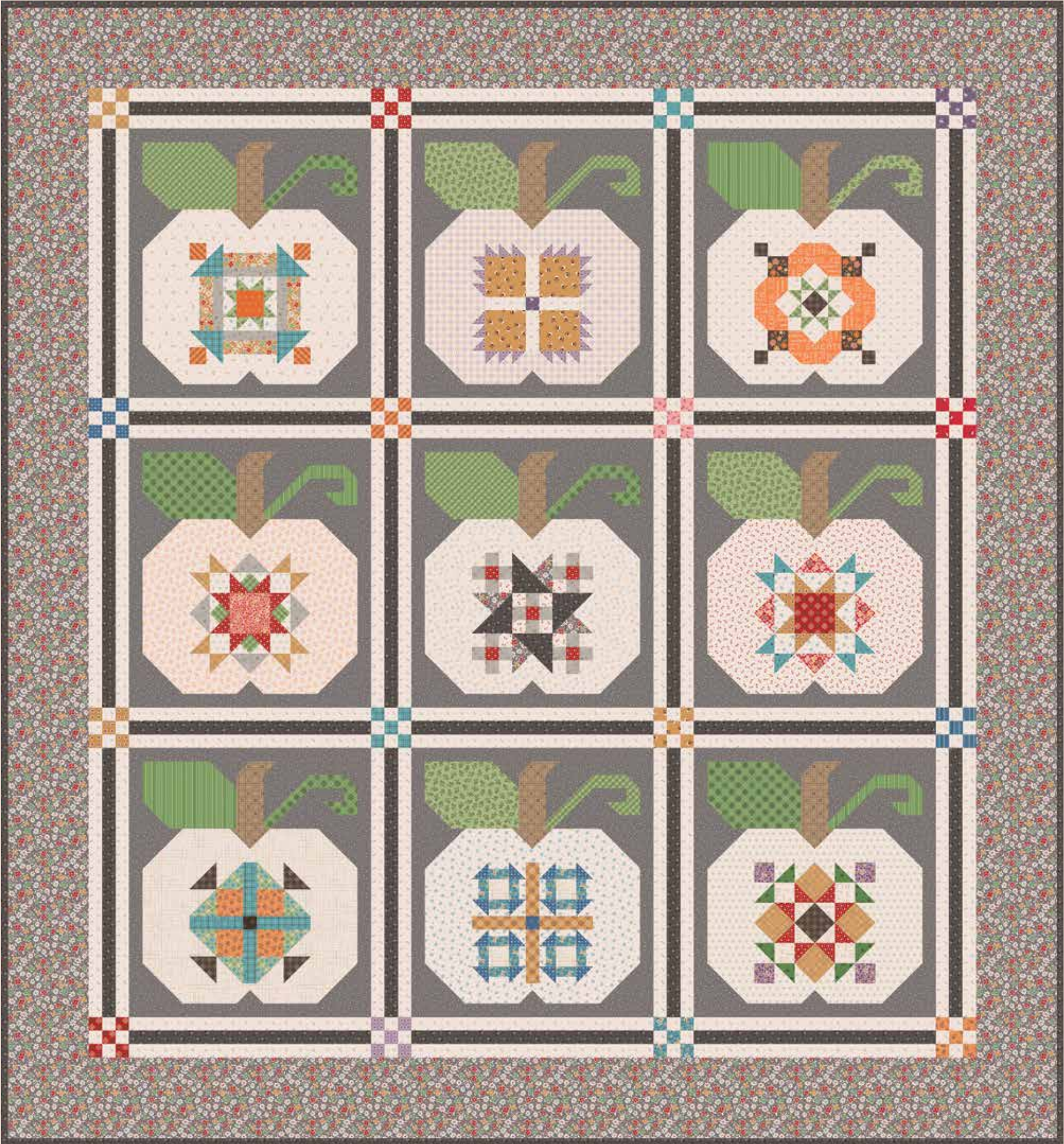
Each Quilt Seeds quilt block finishes at 18" x 20". The pieced setting instructions with 9-patch cornerstones will be included in each packet.

- Collect all nine!
- Keepsake packaging reminiscent of vintage seed packets
- Paper pattern included; no templates required
- Makes a great kit/block-of-the-month idea for quilt shops and online retailers
- Join Lori on her wildly popular YouTube channel for the Autumn Quilt Seeds tutorials
- Fabric requirements will be available in mid-August 2023



Quilt Seeds Packet Back

Autumn Pumpkin Seeds Quilt



Quilt Size 78" x 84"



About the Line



Lori Holt
@beelori1

You're going to fall in love with Lori Holt's designer fabric collection, *Autumn*! A creatively fresh take on her *Autumn Love* designer fabric collection, you'll want to fill your collector tin mug, throw on your favorite flannel shirt, grab your sewing machine, and create fall-inspired quilts and home décor projects.

In her vintage style we all love, *Autumn* features a bushel of prints from florals to dots and gingham to stripes with a dreamy autumnal color palette of Cider, Schoolhouse Red, Pumpkin, Basil, Milk Can, and many others!

Beginning in May 2024, you'll learn How to Build a Scarecrow during Lori's sew along. Be sure to check out Lori's The Quilted Scarecrow quilt and the Pumpkins and Haystacks quilt and Autumn Skies table runner - both in collector kit boxes.

If those projects didn't inspire you, Lori's coordinating notions certainly will! From washi tape to charms, this lineup of notions will be handy in your sewing room or given as a gift to your gourd-geous friends or family!

Scan to stay up-to-date on all
Lori Holt happenings & projects



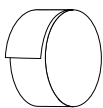
precuts



FFYD-14650



Flat Fold Bundle
25 Yards



RP-14650-40



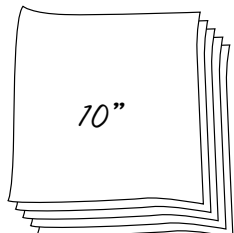
Rolie Polie
40 Pieces
(C14667, Backgrounds and
Home Dec not included)



5-14650-42



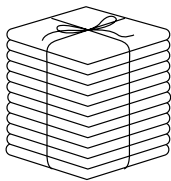
5-Inch Stacker
42 Pieces
(Backgrounds and
Home Dec not included)



10-14650-42



10-Inch Stacker
42 Pieces
(Backgrounds and
Home Dec not included)



FQ-14650-52



Fat Quarter Bundle
52 Pieces
(Home Dec not included)

pre-order only

ADD ANY LAMINATE WITH 100 YARDS MINIMUM
WIDE BACKS ARE NOT INCLUDED IN CASE PACKS
HOME DEC IS NOT INCLUDED IN CASE PACKS



1YD-14650C-21



Cider - 1-Yard Bundle
21 Pieces



1YD-14650R-21



Raindrop - 1-Yard Bundle
21 Pieces



1YD-14650L-10



Latte - 1-Yard Bundle
10 Pieces

CP10-14650-26



10-Yard Half Assortment Case Pack
(Includes * SKUs)

CP10-14650-52



10-Yard Case Pack

CP15-14650-52



15-Yard Case Pack

available April 2024 last call November 1, 2023

100% FINE COTTON · 43/44" WIDE · MADE IN KOREA



9646 South 500 West
Sandy, UT 84070
888.768.8454 · 801.816.0540
www.rileyblakedesigns.com

©2023 Riley Blake Designs & Lori Holt

Machine Wash Cold
No Chlorine Bleach
Tumble Dry Low
Remove Promptly
Not Intended for Children's Sleepwear

The projects portrayed are virtual images. The look of the projects may differ with actual fabric.

The project virtual(s) shown may be different than the image shown on the pattern cover.

Approximate fabric requirements are listed to aid in estimating the amount of yardage to order and are subject to change.

Backing yardage is shown using the best use of fabric and may not be intended for directional fabric.