

★ BLUEESCAPE
COASTAL
by Lisa Audit



available March 2024 | R-4
last call October 1, 2023





Off White Main



Colonial Ocean Floor



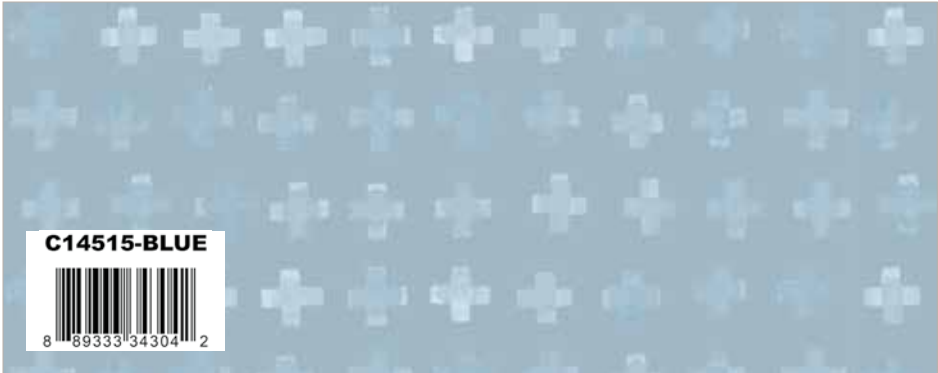
Off White Floral



Colonial Shell Toss



Colonial Texture



Blue Plus Sign



Sand POParazzi



Allspice Shabby



Stone Floret



Colonial Main



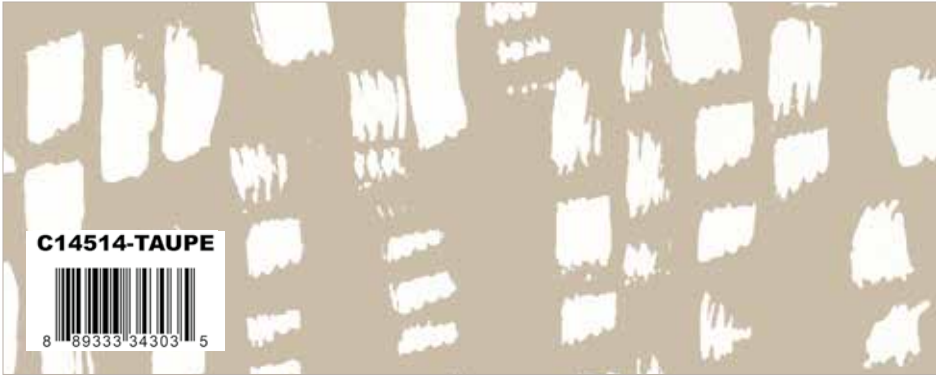
Sky Ocean Floor



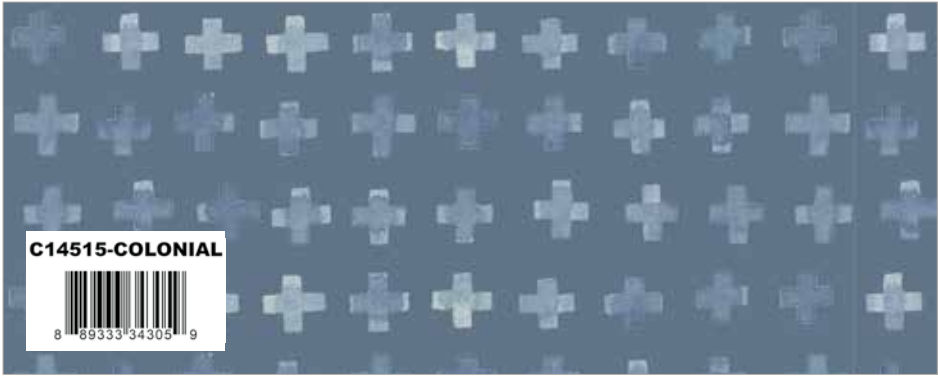
Colonial Floral



Blue Shell Toss



Taupe Texture



Colonial Plus Sign



Cream POParazzi



Cornflower Solid



Frost Floret



Sky Main



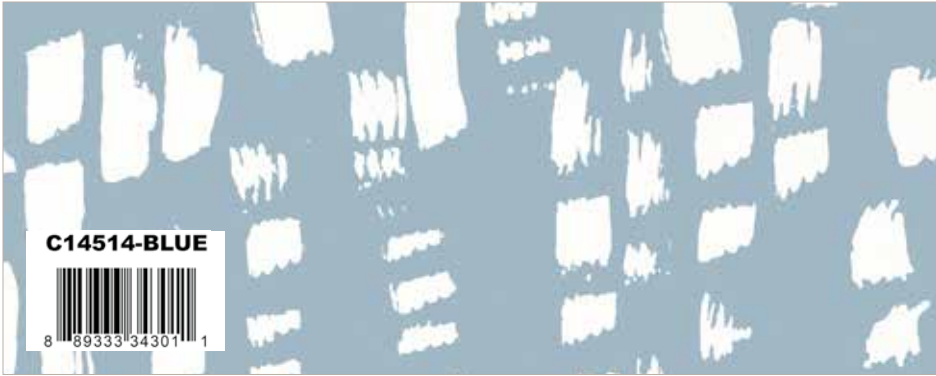
Off White Ocean Floor



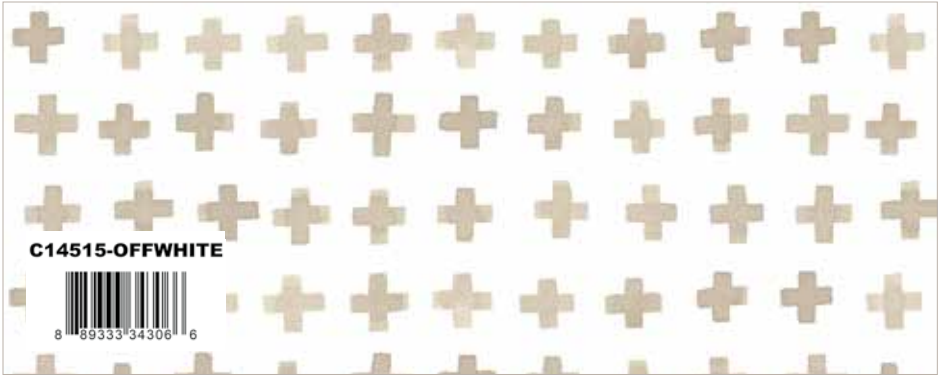
Blue Floral



Off White Shell Toss



Blue Texture



Off White Plus Sign



Khaki Blossom



Cornflower Painter's Watercolor Swirl



Cadet Floret

Seashells Home Dec Pillow Panel



Seashells Home Dec Pillow Panel (10 panels per bolt)
Scaled to 25% | Actual Size is 36" x 43" | Approximate Pillow Size is 17½" x 21½" (with border)



Romance by A Bright Corner



Quilt Size 61" x 74"

fabric requirements

Fat 1/4 of Each

- C14510-COLONIAL Main
- C14510-SKY Main
- C14511-COLONIAL Ocean Floor
- C14511-SKY Ocean Floor
- C14512-BLUE Floral
- C14512-COLONIAL Floral
- C14513-BLUE Shell Toss
- C14513-COLONIAL Shell Toss
- C14514-TAUPE Texture
- C14515-BLUE Plus Sign

Additional Fabrics

- 4 1/4 Yards C120-RILEYWHITE Solid (Background)
- 1 1/4 Yards C14515-COLONIAL Plus Sign (Includes Binding)
- 2 Yards WB200-CHAMBRAY Shades (Backing)



Pre-order the
P165-ROMANCE
Quilt Pattern



Sea Breeze by The RBD Designers



Quilt Size 55½" x 63"

fabric requirements

1/8 Yard of Each

- C14510-COLONIAL Main
- C14512-COLONIAL Floral
- C14512-OFFWHITE Floral
- C14514-BLUE Texture
- C14514-COLONIAL Texture
- C14515-BLUE Plus Sign

1/4 Yard of Each

- C14510-SKY Main
- C14511-SKY Ocean Floor
- C14512-BLUE Floral
- C14513-BLUE Shell Toss
- C14513-COLONIAL Shell Toss
- C14514-TAUPE Texture
- C14515-OFFWHITE Plus Sign

Additional Fabrics

- 5/8 Yard C14513-OFFWHITE Shell Toss
- 3/4 Yard C14510-OFFWHITE Main
- 1 1/8 Yards C14511-OFFWHITE Ocean Floor
- 2 1/8 Yards C805-STONE POParazzi (Background)
- 1 Yard C14515-COLONIAL Plus Sign (Includes Binding)
- 1 3/4 Yards WB645-BEACH Dapple Dot (Backing)

FREE PATTERN
AVAILABLE ON OUR WEBSITE
MARCH 2024

www.rileyblakedesigns.com



C14511 Sky Ocean Floor



C14512 Colonial Floral



C14513 Off White Shell Toss



C14510 Sky Main

Shown as Repeat 44" x 36"



Lisa Audit
@lisaauditart

About the Line

Blue Escape Coastal, Lisa Audit's debut designer fabric collection for Riley Blake Designs will take you on a coastal journey with a menagerie of watercolor imagery. In an expected but surprising palette of sand, taupe, sky, and colonial, you'll imagine your toes in the sand, the salty air blowing through your hair, and dream up the most beautiful coastal quilts, home décor, and apparel projects.

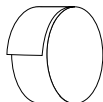
precuts



FFYD-14510



Flat Fold Bundle
25 Yards



RP-14510-40



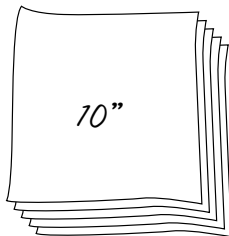
Rolie Polie
40 Pieces



5-14510-42



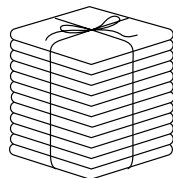
5-Inch Stacker
42 Pieces



10-14510-42



10-Inch Stacker
42 Pieces



FQ-14510-18



Fat Quarter Bundle
18 Pieces

pre-order only

ADD ANY LAMINATE WITH 100 YARDS MINIMUM
PANEL IS NOT INCLUDED IN CASE PACKS



1YD-14510C-6



Colonial - 1-Yard Bundle
6 Pieces



1YD-14510O-6



Off White - 1-Yard Bundle
6 Pieces



1YD-14510S-6



Sky - 1-Yard Bundle
6 Pieces

CP10-14510-18



10-Yard Case Pack

CP15-14510-18



15-Yard Case Pack

available March 2024 last call October 1, 2023

100% FINE COTTON · 43/44" WIDE · MADE IN KOREA



9646 South 500 West
Sandy, UT 84070
888.768.8454 · 801.816.0540
www.rileyblakedesigns.com

©2023 Riley Blake Designs & Lisa Audit

Machine Wash Cold
No Chlorine Bleach
Tumble Dry Low
Remove Promptly
Not Intended for Children's Sleepwear

The projects portrayed are virtual images. The look of the projects may differ with actual fabric.

The project virtual(s) shown may be different than the image shown on the pattern cover.

Approximate fabric requirements are listed to aid in estimating the amount of yardage to order and are subject to change.

Backing yardage is shown using the best use of fabric and may not be intended for directional fabric.