

LAST CALL DATE - July 15th 2026 | AVAILABLE DATE - February 2027



LIBERTY. LASENBY COTTON BOTANICAL MEMORIES MADE IN ITALY



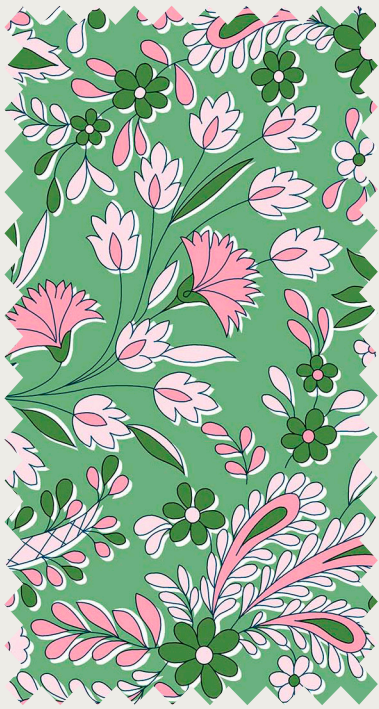
ENID'S  
CONSERVATORY  
01667540A

01667540A



HATTIE AND  
LIZZIE  
01667541A

01667541A



NYBG  
NEEDLEWORK  
01667542A

01667542A



HELEN'S  
HYDRANGEA'S  
01667543A

01667543A



VERONICA'S  
GARDEN  
01667544A

01667544A



ENID'S  
CONSERVATORY  
01667540B

01667540B



HATTIE AND  
LIZZIE  
01667541B

01667541B



NYBG  
NEEDLEWORK  
01667542B

01667542B



HELEN'S  
HYDRANGEA'S  
01667543B

01667543B



VERONICA'S  
GARDEN  
01667544B

01667544B



RECOMMENDED BLENDERS



WILTSHIRE SHADOW  
PRIMROSE  
01666507A / 04775679Z

01666507A / 04775679Z



EMILY BELLE  
PAPRIKA  
01666433A

01666433A



WILTSHIRE SHADOW  
ROSE PINK  
01666518A / 04775687Z

01666518A / 04775687Z



EMILY BELLE  
BRIGHT PINK  
01666439A

01666439A



WILTSHIRE SHADOW  
LEAF  
01666557A / 04775709Z

01666557A / 04775709Z



Whilst every effort is made to ensure colour consistency, please be aware that due to the nature of the product and the print process, slight variances may occur in colour definition between this document and the fabric.



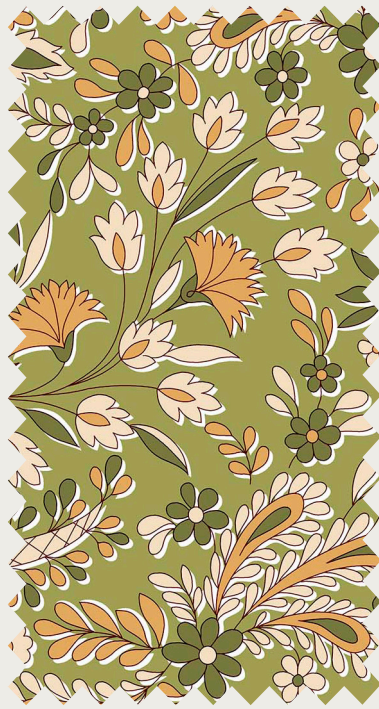
ENID'S  
CONSERVATORY  
01667540C

01667540C



HATTIE AND  
LIZZIE  
01667541C

01667541C



NYBG  
NEEDLEWORK  
01667542C

01667542C



HELEN'S  
HYDRANGEA'S  
01667543C

01667543C



VERONICA'S  
GARDEN  
01667544C

01667544C



ENID'S  
CONSERVATORY  
01667540D

01667540D



HATTIE AND  
LIZZIE  
01667541D

01667541D



NYBG  
NEEDLEWORK  
01667542D

01667542D



HELEN'S  
HYDRANGEA'S  
01667543D

01667543D



VERONICA'S  
GARDEN  
01667544D

01667544D

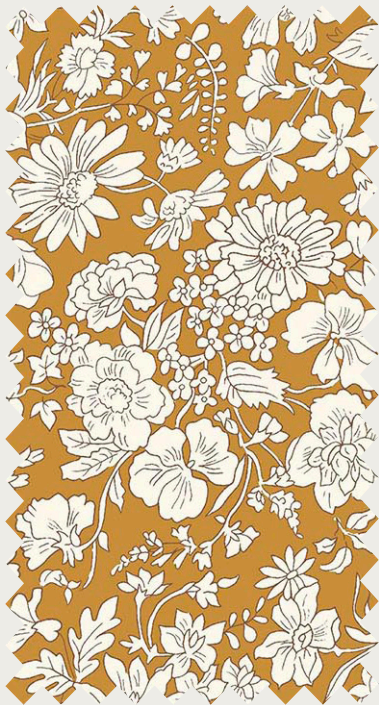


RECOMMENDED BLENDERS



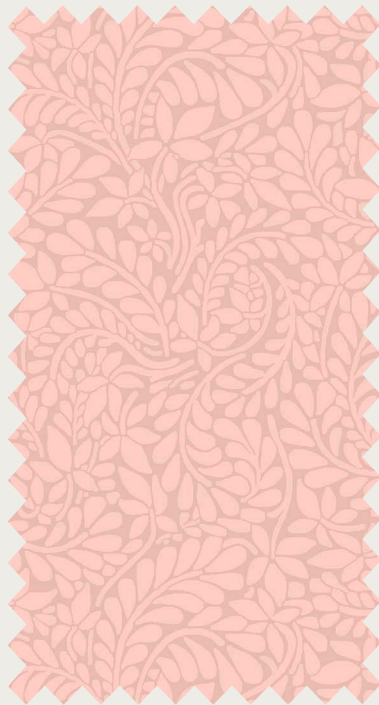
WILTSHIRE SHADOW  
BLACKCURRANT  
01666527A

01666527A



EMILY BELLE  
GOLDEN OCHRE  
01666431A

01666431A



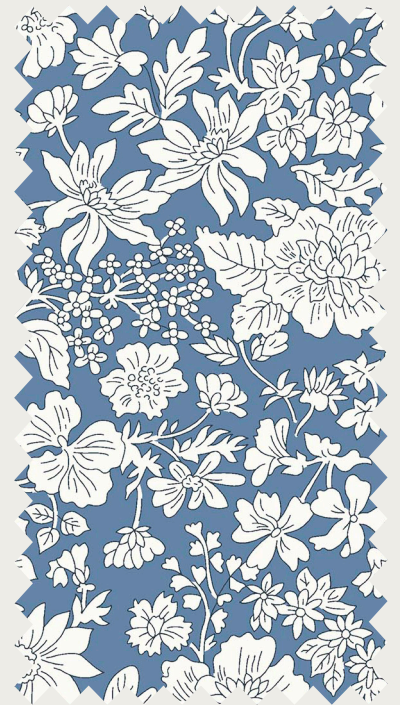
YORK FERN  
DUSTY PINK  
016668102A

016668102A



YORK FERN  
HYDRANGEA BLUE  
016668105A

016668105A



EMILY BELLE  
EVENING SKY  
01666414A

01666414A



Whilst every effort is made to ensure colour consistency, please be aware that due to the nature of the product and the print process, slight variances may occur in colour definition between this document and the fabric.

# BOTANICAL MEMORIES COLLECTION

Created in collaboration with the New York Botanical Garden Archives, the Botanical Memories collection draws inspiration from the rich history of the renowned New York City gardens. Shaped by archival materials and manuscripts documenting the garden's development since its founding in 1891, and the wider study of the history of American botanical science and horticulture, the collection is carefully curated by Liberty's Guest Curator, Leisa Morris. Interpreted through Liberty's artistic lens, Botanical Memories reflects a personal sense of home discovered within the cultivated landscape and shared heritage.

The collection is traditionally screen printed onto Lasenby cotton, a base specifically developed for quilting and craft projects.

## PRE-CUT COLLECTION



### 20 FAT QUARTERS

0166FQ-BM-20

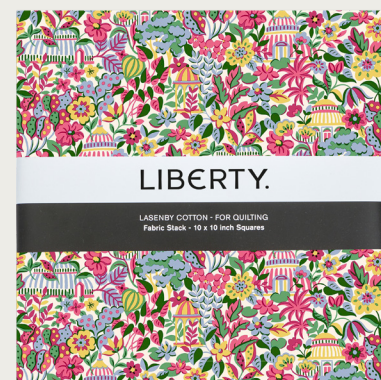
Average Piece Length - 45cm x 55cm approx. / 18" x 22" approx.



### 5-INCH SQUARES

0166SQ-BM-5

Average Piece Length - 12.7cm x 12.7cm / 5" x 5"



### 10-INCH SQUARES

0166SQ-BM-10

Average Piece Length - 25.4cm x 25.4cm / 10" x 10"



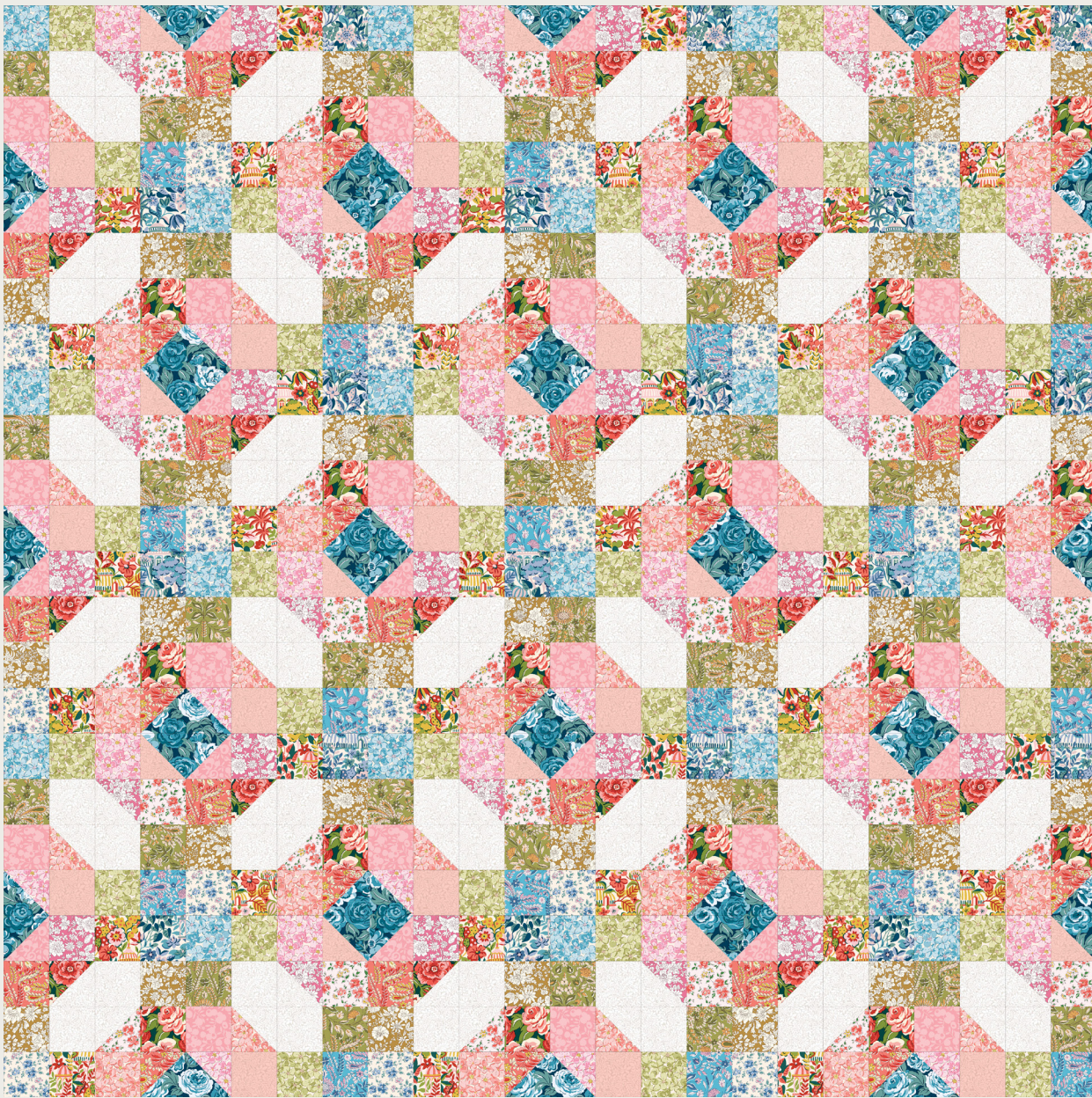
### LASENBY ROLL

0166FR-BM-A

Average Piece Length - 2.5" x 44"

# PATTERNS AND PROJECTS

## WAKE ME UP QUILT - 84" x 84"



- **York Fern Cream on Cream**  
01666849C  
1.4m / 1½ Yards
- **Hattie and Lizzie**  
01667541B  
0.35m / 14" by WOF
- **NYBG Needlework**  
01667542B  
0.35m / 14" by WOF
- **Helen's Hydrangea's**  
01667543A  
0.35m / 14" by WOF
- **Helen's Hydrangea's**  
01667543B  
0.35m / 14" by WOF
- **Veronica's Garden**  
01667544B  
0.35m / 14" by WOF
- **Wiltshire Shadow Rose Pink**  
01666518A / 04775687Z  
0.35m / 14" by WOF
- **Emily Belle Bright Pink**  
01666439A  
0.35m / 14" by WOF
- **York Fern Dusty Pink**  
016668102A  
0.35m / 14" by WOF
- **Enid's Conservatory**  
01667540B  
0.46m / ½ Yard
- **NYBG Needlework**  
01667542C  
0.46m / ½ Yard
- **Helen's Hydrangea's**  
01667543C  
0.46m / ½ Yard
- **Emily Belle Golden Ochre**  
01666431A  
0.46m / ½ Yard
- **Enid's Conservatory**  
01667540D  
1 Fat Quarter
- **Hattie and Lizzie**  
01667541D  
1 Fat Quarter
- **NYBG Needlework**  
01667542D  
1 Fat Quarter
- **Helen's Hydrangea's**  
01667543D  
1 Fat Quarter
- **Veronica's Garden**  
01667544D  
0.5m / 20"
- **Binding**  
**Veronica's Garden**  
01667544D  
0.6m / ¾ Yard
- **Backing**  
**York Fern Hydrangea Blue**  
016668105A  
7m / 7¾ Yards

Pattern written and designed by Emma Jean Jansen  
 Pattern available for purchase from  
[emmajeans.com.au/pages/wholesale-request](http://emmajeans.com.au/pages/wholesale-request)

## BOTANICAL MEMORIES DRESDEN CUSHION - 20" x 20"

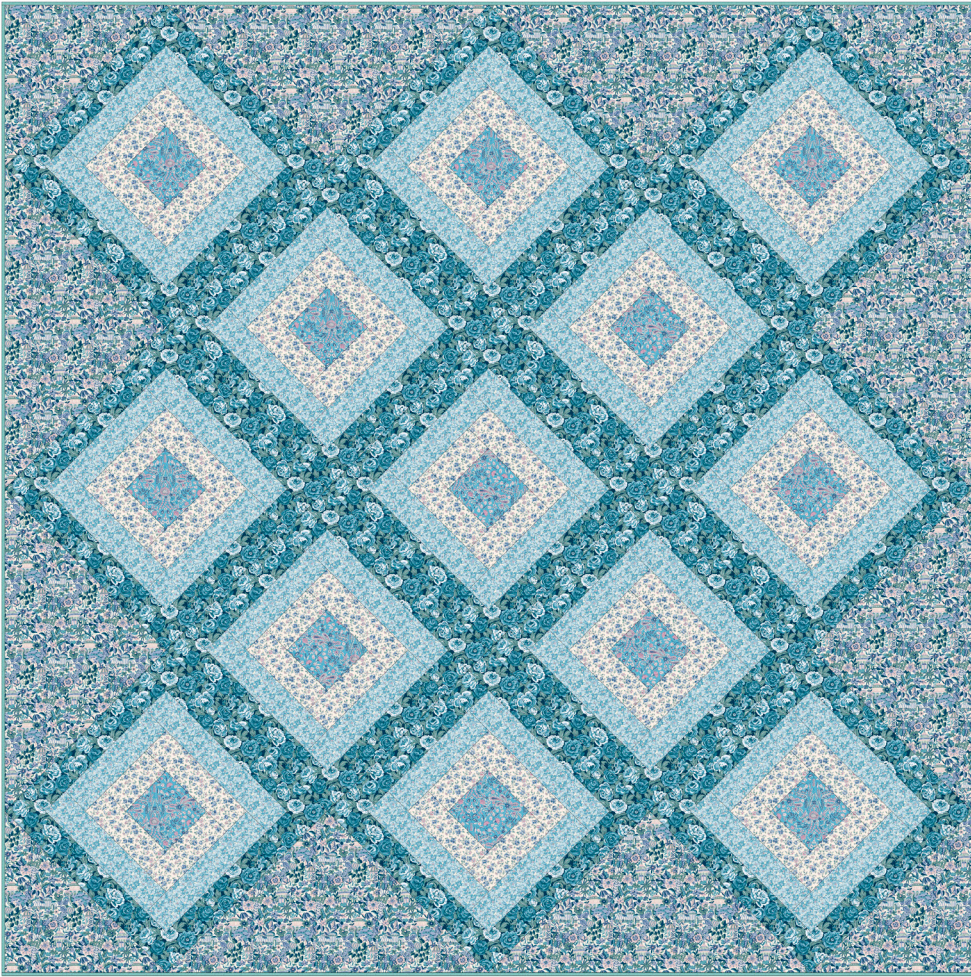


- **Enid's Conservatory**  
01667540A  
0.5m / ½ Yard
- **Emily Belle Ivory**  
01666416A  
0.25m / ¼ Yard
- 1 Fat Eighth of all other prints in the collection

Pattern written and designed by Leisa Morris White  
 Pattern will be available at [libertyfabric.com](http://libertyfabric.com)  
 from 1st February 2027

## PATTERNS AND PROJECTS

### BOTANICAL MEMORIES LOG CABIN QUILT - 76" x 76"



Pattern written and designed by Leisa Morris White  
Pattern will be available at [libertyfabric.com](http://libertyfabric.com)  
from 1st February 2027

- **NYBG Needlework**  
01667542D  
0.5m / ½ Yard
- **Hattie and Lizzie**  
01667541D  
1m / 1 Yard
- **Helen's Hydrangea**  
01667543D  
1.5m / 1½ Yards
- **Veronica's Garden**  
01667544D  
2m / 2 Yards
- **Enid's Conservatory**  
01667540D  
2m / 2 Yards
- **Binding**  
**York Fern Hydrangea Blue**  
016668105A  
0.45m / ½ Yard
- **Backing**  
**Emily Blossom Wide Width Sapphire**  
0166W7414A  
2m / 2¼ Yards

### MARCH BAG - APPROX 12" x 16"



Pattern written and designed by Melissa Mortenson  
Pattern available for purchase from  
[shop.polkadotchair.com/collections/wholesale](http://shop.polkadotchair.com/collections/wholesale)

- **Bag Straps and Bag Band**  
**NYBG Needlework**  
01667542B  
0.75m / ¾ Yard
- **Helen's Hydrangeas**  
01667542B  
1m / 1 Yard  
(½ Yard for Bag Front Contrast / ½ Yard Bag Lining)
- **Veronica's Garden**  
01667544B  
1m / 1 Yard  
(½ Yard for Bag Outside Pocket / ½ Yard Bag Outside Pocket Lining)

The projects portrayed are virtual images. The look of the projects may differ with actual fabric.

Approximate fabric requirements are listed to aid in estimating the amount of yardage/meterage to order and are subject to change.

# LIBERTY.