



Pink Clifton Rose



Cream Icons



Pink Stripe



Mist Arlington Ditsy



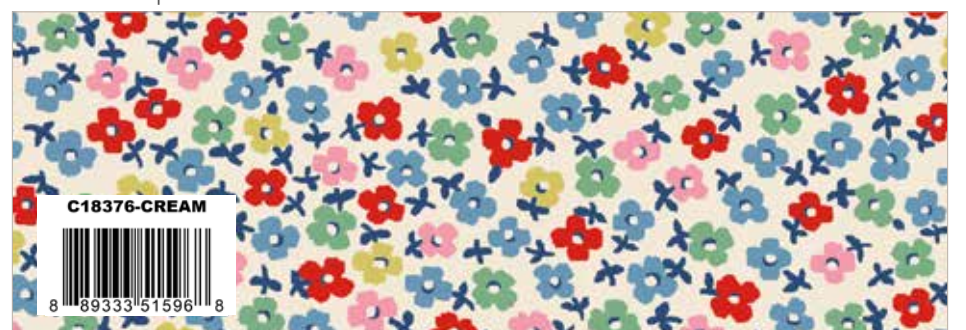
Pink Button Spot



Red Button Spot



Red Gingham



Cream Teeny One



Blue Clifton Rose



Pink Icons



Green Stripe



Cream Arlington Ditsy



Multi Button Spot



Blue Button Spot



Pink Gingham



Blue Teeny One



Cream Clifton Rose



Mist Icons



Blue Stripe



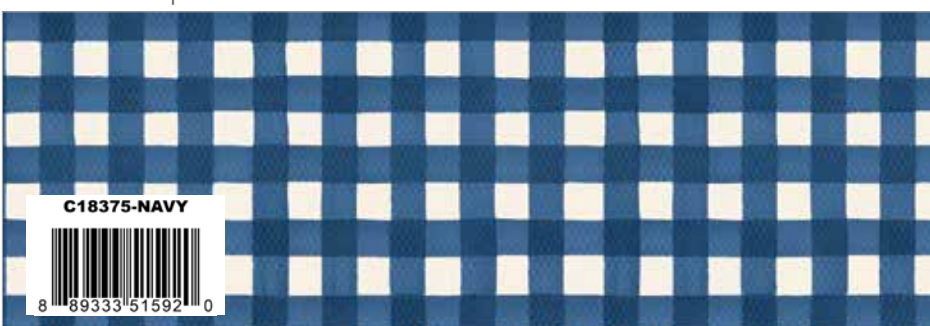
Pink Arlington Ditsy



Green Button Spot



Navy Button Spot



Navy Gingham



Pink Teeny One

Cath Kidston® Signature Collection 107/108" Wide Backs



Blue Clifton Rose Wide Back



Cream Clifton Rose Wide Back

Pretty Dresses by Black Mountain Needleworks



Quilt Size 50" x 58"

estimated requirements

1/8 Yard of Each

- C18370-CREAM Clifton Rose
- C18371-MIST Icons
- C18372-BLUE Stripe
- C18372-PINK Stripe
- C18374-MULTI Button Spot
- C18375-PINK Gingham
- C18376-CREAM Teeny One

1/4 Yard of Each

- C18370-BLUE Clifton Rose
- C18372-GREEN Stripe
- C18374-BLUE Button Spot
- C18374-PINK Button Spot
- C18375-RED Gingham

Additional Fabrics

- 1/2 Yard C840-PASTE American Jane Pindot
- 1 1/4 Yards C18370-PINK Clifton Rose
- 1 5/8 Yards C747-TEAROSE Bee Cross Stitch (Background)
- 1 Yard C18375-NAVY Gingham (Includes Binding)
- 1 3/4 Yards WB18377-BLUE Clifton Rose (Backing)



Pre-order the P298-PRETTYDRESSES Quilt Pattern



Charm Posies by Black Mountain Needleworks



Quilt Size 47" x 47"

estimated requirements

(1) 5-18370-42 5" Stacker

Additional Fabrics

(3) 5" Squares cut from excess fabric (Need total of 45)

1 Yard C18370-BLUE Clifton Rose

1 1/2 Yards C747-TEAROSE Bee Cross Stitch (Background)

1/2 Yard C18374-RED Button Spot (Binding)

1 1/2 Yards WB18377-BLUE Clifton Rose (Backing)



Pre-order the
P298-CHARMPOSIES
Quilt Pattern



Skip to My Lou by Busy Hands Quilts



Quilt Size 57" x 68"

estimated requirements

(1) 10-18370-42 10" Stacker

Additional Fabrics

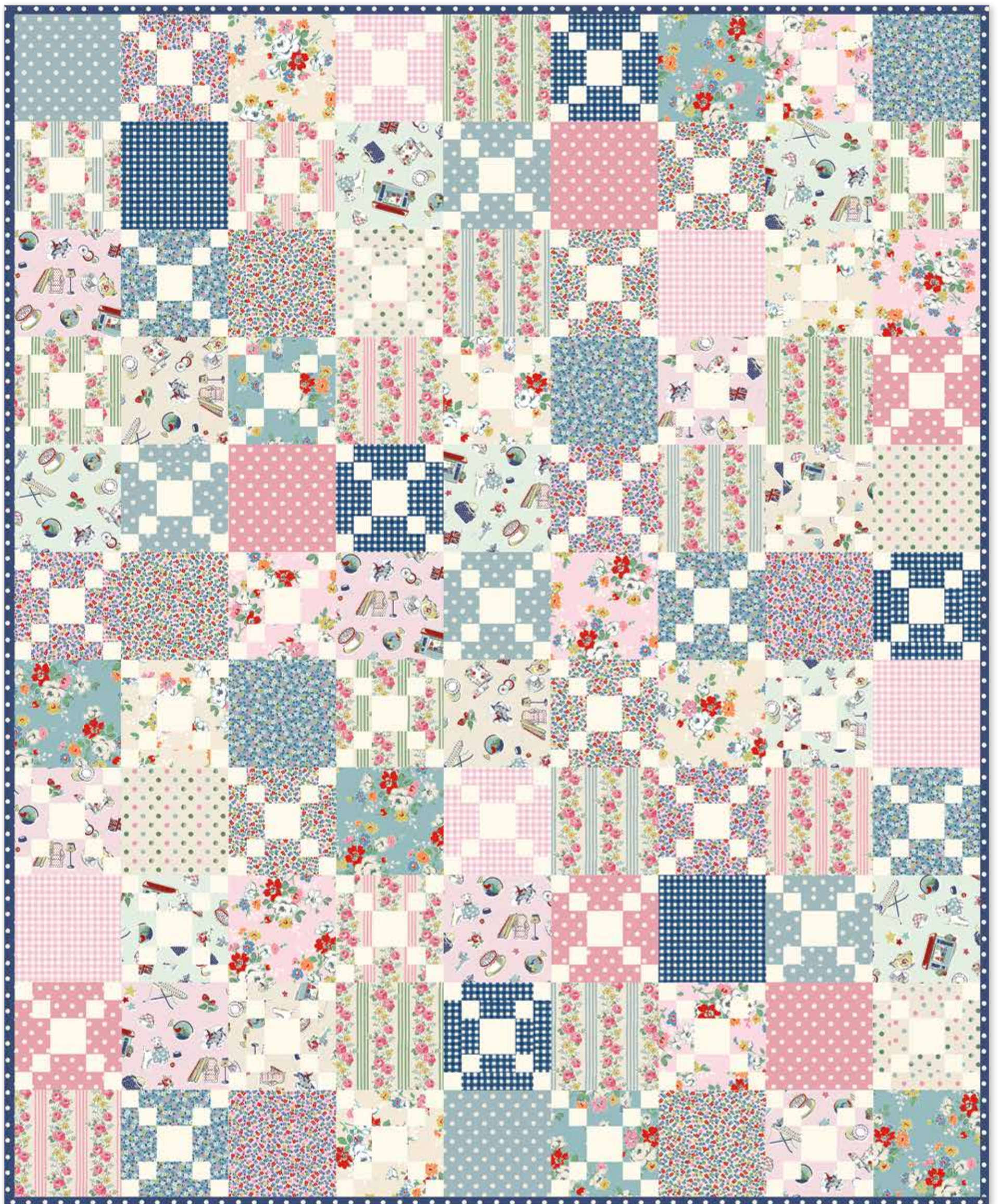
- 1 1/4 Yards C120-CLOUD Confetti Cotton
- 1 1/2 Yards C120-RILEYNAVY Confetti Cotton
- 1/2 Yard C18374-NAVY Button Spot (Binding)
- 1 3/4 Yards WB18377-CREAM Clifton Rose (Backing)



Pre-order the P224-SKIPTOMYLOU Quilt Pattern



London Garden by The RBD Designers



Quilt Size 54½" x 66½"

estimated requirements

(1) FQ-18370-24 Fat Quarter Bundle

Additional Fabrics

1 Yard C120-LECREME Confetti Cotton

5/8 Yard C18374-NAVY Button Spot (Binding)

1 3/4 Yards WB18377-CREAM Clifton Rose (Backing)



FREE PATTERN
AVAILABLE ON OUR WEBSITE
SEPTEMBER 2026

www.rileyblakedesigns.com

The Cindy Lou Bag by Bluebird Patterns

CUTE & COMPACT SIZE!



Bag Size 8" x 8" x 2"

estimated requirements

- 3/8 Yard C18370-BLUE Clifton Rose (Bag)
- 1/2 Yard C18370-PINK Clifton Rose (Binding)
- 1/2 Yard C18374-PINK Button Spot (Lining, Handles)

Additional Supplies

- Sallie Tomato 3/4" Hardware Kit
- 3/4" Magnetic Snaps
- Batting or Soft and Stable
- Fusible Interfacing
- 3/4" Webbing (optional for handles)

Pre-order the
P100-CINDYLOU
Bag Pattern

P100-CINDYLOU



Gunmetal

P210-ST5193B



0 26404 94284 5



Rose Gold

P210-ST5193C



0 26404 94285 2



Nickle

P210-ST5193S



0 26404 94281 4



Antique

P210-ST5193A



0 26404 94283 8



Gold

P210-ST5193G



0 26404 94282 1

Sallie Tomato Hardware Kit

- (1) 3/4" Slider Buckle
- (2) 3/4" D-Rings
- (2) 3/4" Swivel Hooks

Cath Kidston® Needle Minder & Charms

Cath Kidston®
LONDON



Storefront Needle Minder

ST-51615

- Approx. 2½" x 1¾"
- MOQ: 5



8 89333 51615 6



Teacup Enamel Charm

- Approx. 2¼" x 2¾"
- MOQ: 10

FG-51614



8 89333 51614 9



Teapot Enamel Charm

- Approx. 2¼" x 2¾"
- MOQ: 10

FG-51613



8 89333 51613 2



C18372 Pink Stripe



C18373 Mist Arlington Ditsy



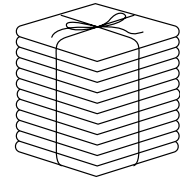
C18370 Blue Clifton Rose

Shown as Repeat 44" x 36"

Advanced Sample Bundle

ONLY AVAILABLE THROUGH LOCAL RBD REPS

- Pre-order only
- One per customer
- Not available on website



ASY-FQ-18370-24



ASY Fat Quarter Bundle
24 Pieces



Cath Kidston[®]
LONDON

About the Line

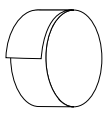
Cath Kidston Signature Collection celebrates the timeless charm and quintessential style of Cath Kidston. Known for her nostalgic florals, cheerful strawberries, and playful nods to British life, this collection captures the heart of her beloved brand. From London-inspired icons to her faithful Lakeland Terrier, Stanley, every print and button spot reflects Cath's unmistakable blend of whimsy and heritage. Classic, colourful, and effortlessly charming; this collection is a true celebration of everyday joy, the Cath Kidston way.

About the Brand

Known and loved all over the world for our hand-painted prints and prettily practical products, we aspire to inspire the silver lining seekers, champion the optimist's pursuit of the bright side through colour and character and bring joy to the everyday. With our hands, with our hearts, with our collections - we make joy for our Cath Community all over the world.

The Cath Kidston name and logo are used under license from Next Retail Limited. © Next Retail Limited, All Rights Reserved.

precuts



RP-18370-40



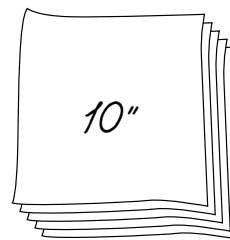
Rolie Polie
40 Pieces



5-18370-42



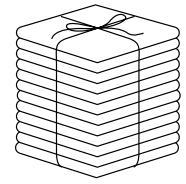
5-Inch Stacker
42 Pieces



10-18370-42



10-Inch Stacker
42 Pieces



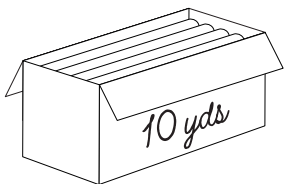
FQ-18370-24



Fat Quarter Bundle
24 Pieces

pre-order only

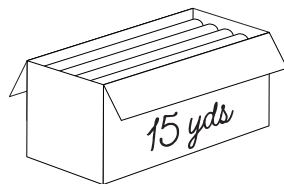
ADD ANY LAMINATE WITH 100 YARDS MINIMUM



CP10-18370-24



10-Yard Case Pack



CP15-18370-24



15-Yard Case Pack



1YD-18370B-8



Blue - 1-Yard Bundle
8 Pieces



1YD-18370C-8



Cream - 1-Yard Bundle
8 Pieces



1YD-18370P-8



Pink - 1-Yard Bundle
8 Pieces

WIDE BACKS ARE NOT INCLUDED IN CASE PACKS

Cath Kidston[®] Signature Collection
available September 2026 **last call April 1, 2026**

100% FINE COTTON · 43/44" WIDE · MADE IN KOREA



4060 W 2100 N, STE A
Lehi, UT 84048-7837
888.768.8454 · 801.816.0540
www.rileyblakedesigns.com

©2026 Riley Blake Designs

Machine Wash Cold
No Chlorine Bleach
Tumble Dry Low
Remove Promptly
Not Intended for Children's Sleepwear

The projects portrayed are virtual images. The look of the projects may differ with actual fabric.

The project virtual(s) shown may be different than the image shown on the pattern cover.

Approximate fabric requirements are listed to aid in estimating the amount of yardage to order and are subject to change.

Backing yardage is shown using the best use of fabric and may not be intended for directional fabric.