

Cheddar *at* Twilight

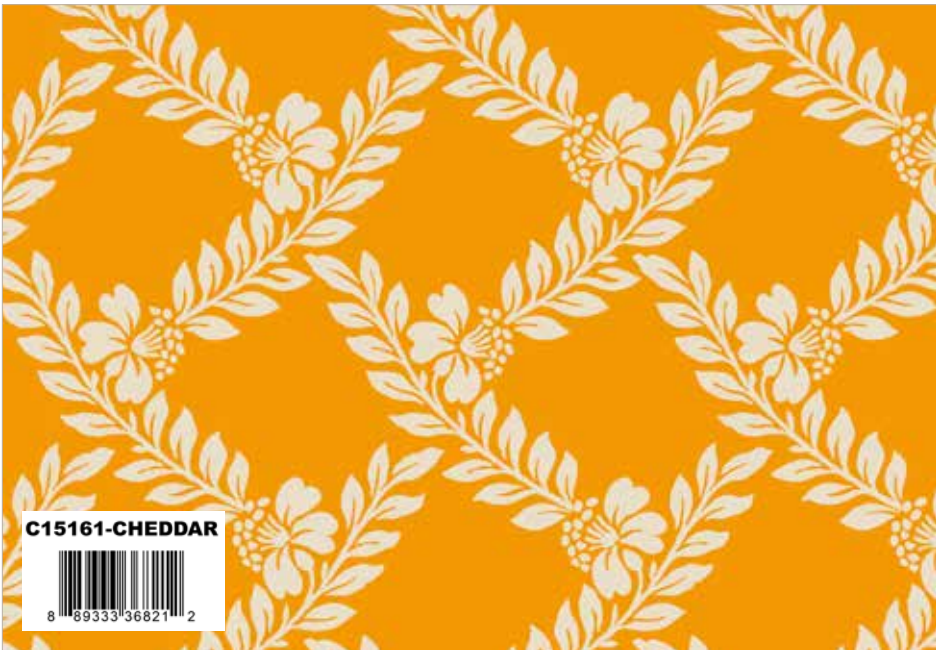
The RBD Designers



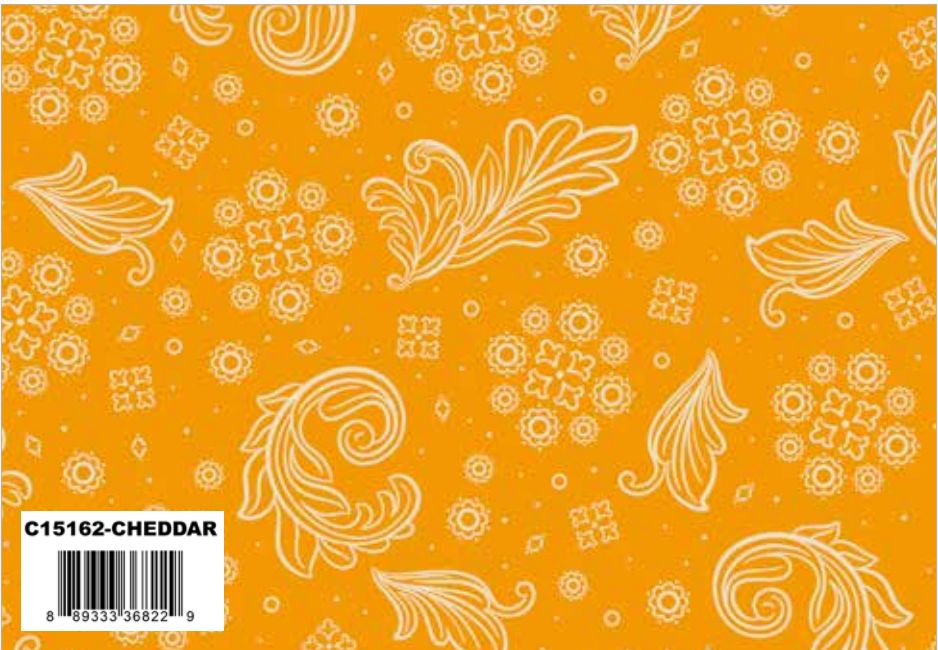
available September 2024 | R-1
last call April 1, 2024



Navy Main



Cheddar Vines



Cheddar Scarf



Navy Medallion



Cream Sprigs



Cheddar Flower Dots



Navy Diamonds

coordinating basics



Pearl Confetti Cotton



Cream Main



Cream Vines



Cream Medallion



Navy Flower Dots



Navy Scarf



Cheddar Sprigs



Cream Diamonds

coordinating basics



Cheddar Confetti Cotton



Cheddar Main



Navy Vines



Cheddar Medallion



Cream Flower Dots



Cream Scarf



Navy Sprigs



Cheddar Diamonds

coordinating basics



Twilight Confetti Cotton

Cheddar Twilight 107/108" Wide Back



Cream Scarf Wide Back

Peppermint Bark by It's Sew Emma



Quilt Size 51½" x 67"



estimated requirements

(1) FQ-15160-21 Fat Quarter Bundle

Additional Fabrics

2 3/4 Yards C15165-CREAM Flower Dots (Background)

5/8 Yard C15163-NAVY Medallion (Binding)

1 2/3 Yards WB15167-CREAM Scarf (Backing)



Pre-order the
P051-PEPPERMINTBARK
Quilt Pattern



When you purchase the fabrics
or kits for this quilt, you'll
be eligible to purchase one
digitally-printed quilt top to
finish and hang in your store.

Pre-order the
Digital Quilt Top



Solid Box Size: 11" x 12¼" x 3½"
(Printed belly band)

Includes pattern and fabric for
quilt top and binding

AVAILABLE OCTOBER 2024

Pre-order the
Peppermint Bark
Quilt Kit



Plus Quilt by The RBD Designers



Quilt Size 54" x 63"

estimated requirements

(1) 10-15160-42 10" Stacker

Additional Fabrics

1 5/8 Yards C15166-CREAM Diamonds (Background)

1/2 Yard C15165-NAVY Flower Dots (Binding)

1 3/4 Yards WB15167-CREAM Scarf (Backing)



FREE PATTERN
AVAILABLE ON OUR WEBSITE
SEPTEMBER 2024

www.rileyblakedesigns.com

Starstruck in Plaid by Snowball Quilt Company



Quilt Size 90" x 90"

estimated requirements

1/4 Yard of Each

C15164-CREAM Sprigs

C15165-NAVY Flower Dots

1 1/4 Yards of Each

C15160-CREAM Main

C15160-NAVY Main

C15161-NAVY Vines

C15162-CREAM Scarf

C15164-CHEDDAR Sprigs

Additional Fabrics

2 3/4 Yards C120-RILEYWHITE Confetti Cotton
(Background)

1 1/4 Yards C15166-NAVY Diamonds
(Includes Binding)

2 3/4 Yards WB15167-CREAM Scarf (Backing)

Pre-order the
P190-STARSTRUCK
Quilt Pattern

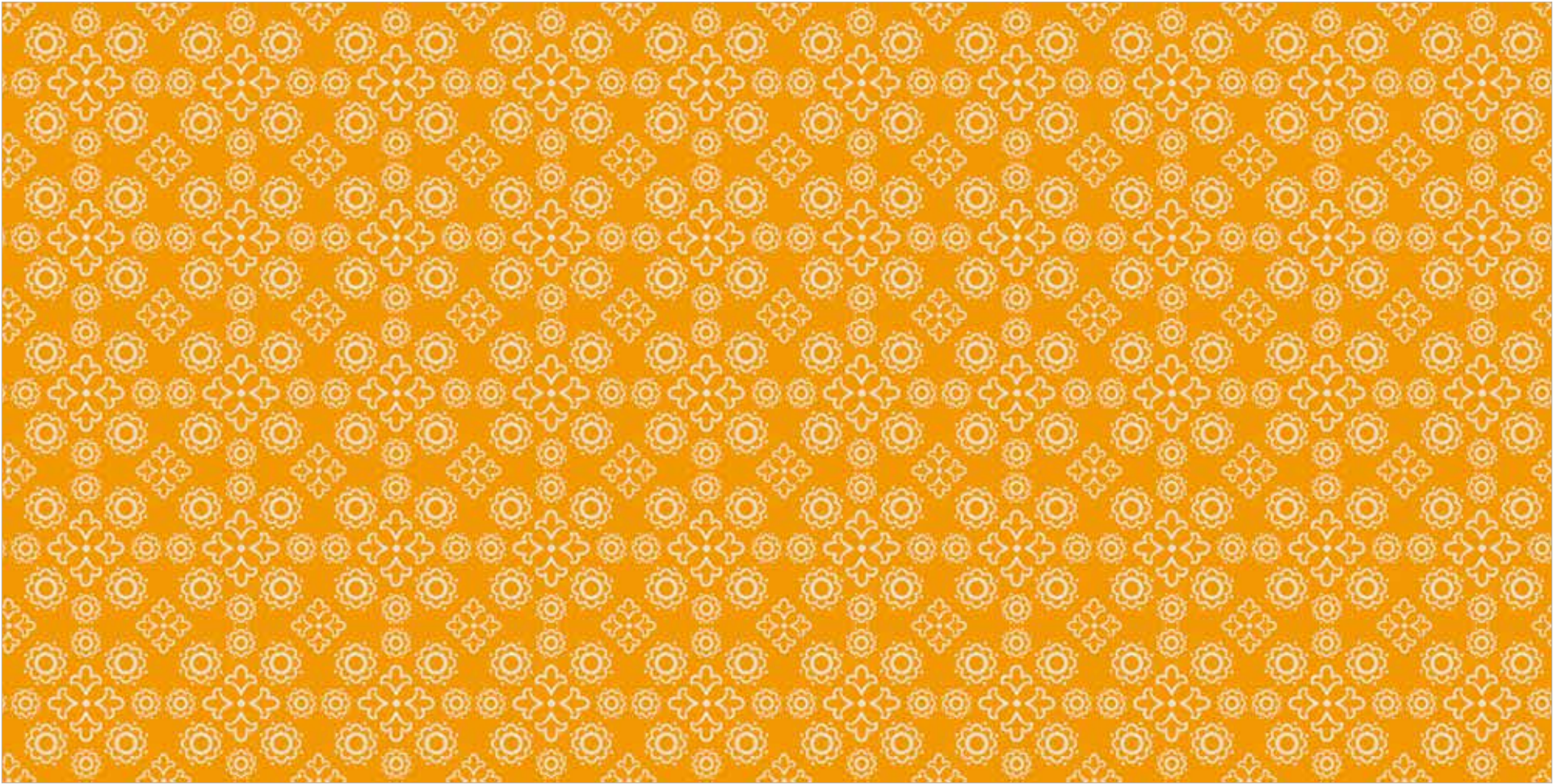




C15161 Navy Vines



C15162 Cream Scarf



C15163 Cheddar Medallion



C15160 Cream Main

Shown as Repeat 44" x 36"



About the Line

Opulent and sophisticated – immerse yourself into *Cheddar at Twilight*, a tantalizing designer fabric collection from The RBD Designers. Featuring an array of gorgeous florals in a decadent palette of cream, cheddar, gold, midnight, and navy – you’ll be inspired to create striking projects. Surprise your guests for book club, wine night, or a special occasion as you show off your handmade table décor or pillows with this one-of-a-kind collection that only RBD could create. Put on your favorite jazz station and let the sewing begin!

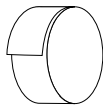
precuts



FFYD-15160



Flat Fold Bundle
25 Yards



RP-15160-40



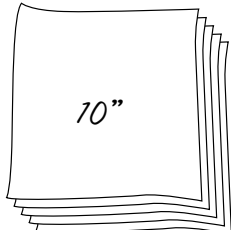
Rolie Polie
40 Pieces



5-15160-42



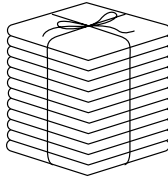
5-Inch Stacker
42 Pieces



10-15160-42



10-Inch Stacker
42 Pieces



FQ-15160-21



Fat Quarter Bundle
21 Pieces

pre-order only

ADD ANY LAMINATE WITH 100 YARDS MINIMUM
WIDE BACK IS NOT INCLUDED IN CASE PACKS



1YD-15160CH-7



Cheddar - 1-Yard Bundle
7 Pieces



1YD-15160CR-7



Cream - 1-Yard Bundle
7 Pieces



1YD-15160N-7



Navy - 1-Yard Bundle
7 Pieces

CP10-15160-21



10-Yard Case Pack

CP15-15160-21



15-Yard Case Pack

available September 2024 **last call April 1, 2024**

100% FINE COTTON · 43/44" WIDE · MADE IN KOREA



9646 South 500 West
Sandy, UT 84070
888.768.8454 · 801.816.0540
www.rileyblakedesigns.com

©2024 Riley Blake Designs

Machine Wash Cold
No Chlorine Bleach
Tumble Dry Low
Remove Promptly
Not Intended for Children's Sleepwear

The projects portrayed are virtual images. The look of the projects may differ with actual fabric.

The project virtual(s) shown may be different than the image shown on the pattern cover.

Approximate fabric requirements are listed to aid in estimating the amount of yardage to order and are subject to change.

Backing yardage is shown using the best use of fabric and may not be intended for directional fabric.