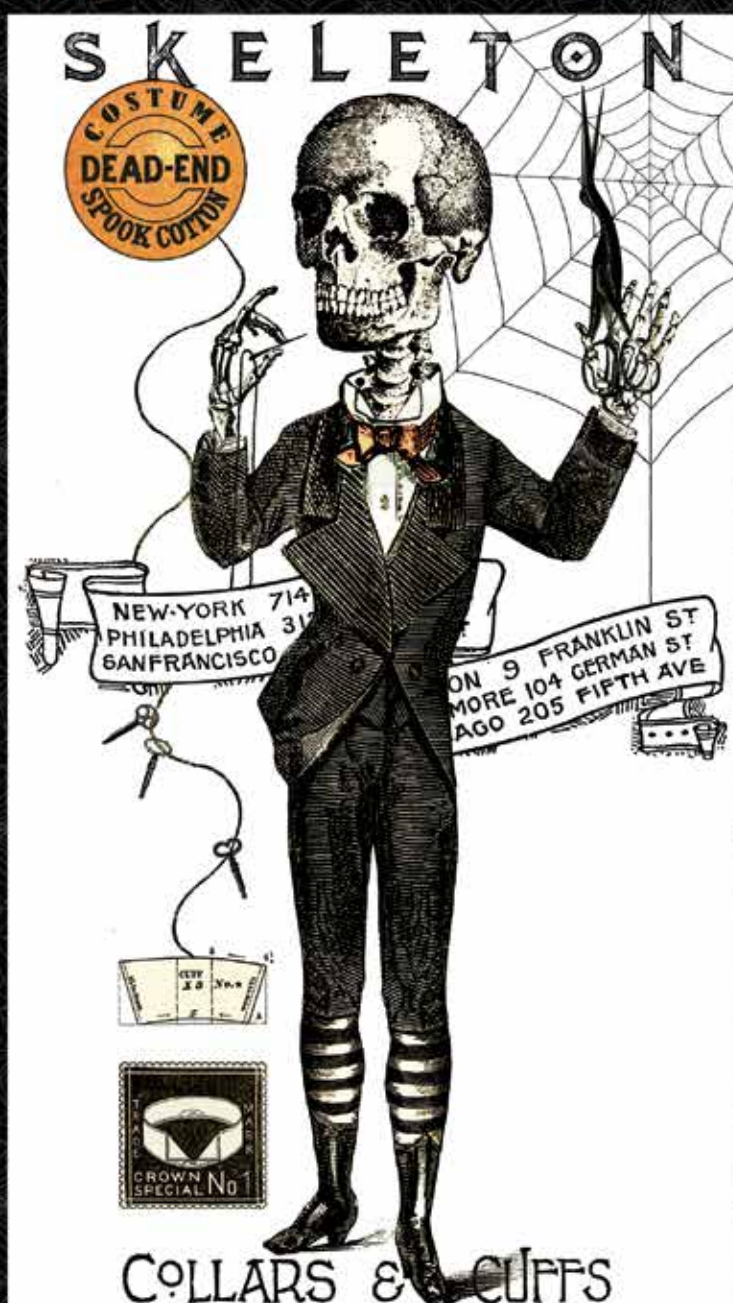


INTRODUCES

# COSTUME MAKER'S BALL

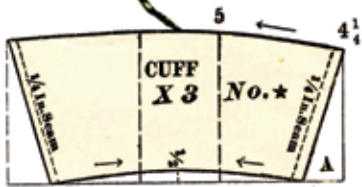
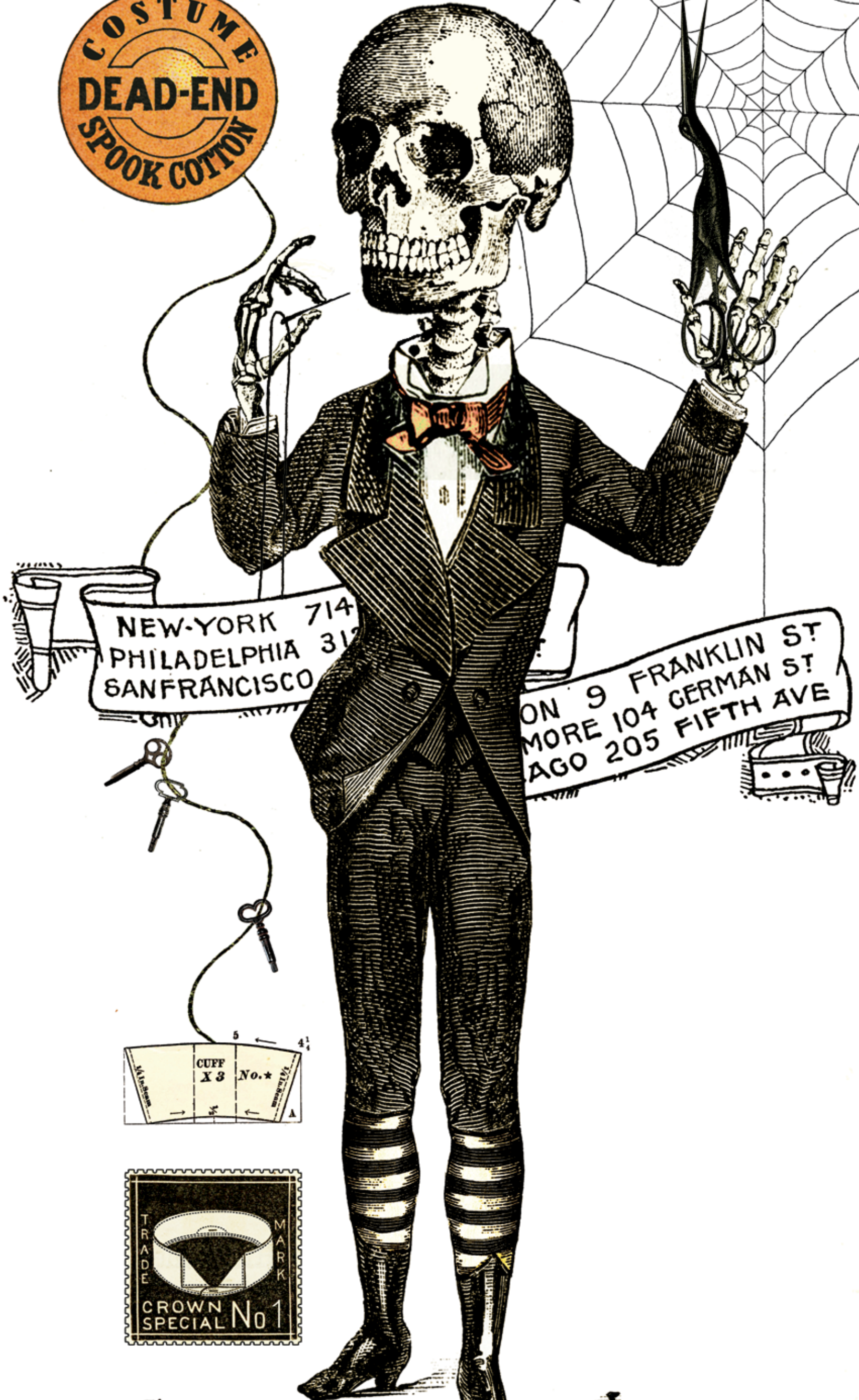
j. weckerfrischejoystudio



AVAILABLE  
APRIL  
2019



# SKELETON



P8360-WHITE



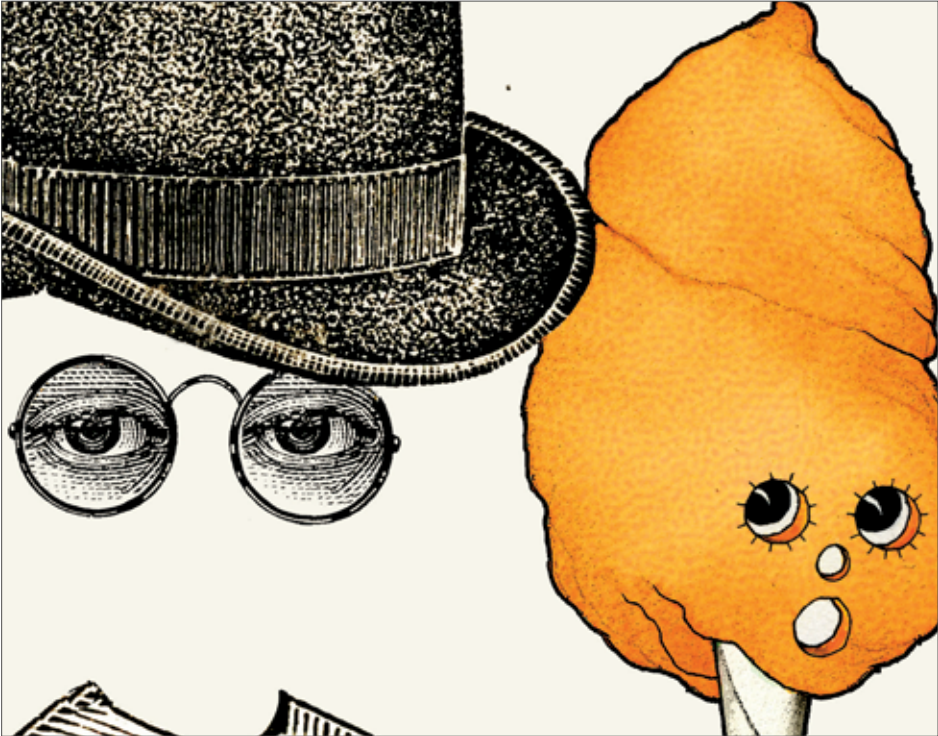
## COLLARS & CUFFS





Cream Costume Medium Patch

Scaled to 24% | Actual Size is 24" x 42"



Cream Costume Medium Patch

Actual Scale



Orange Costume Bunting

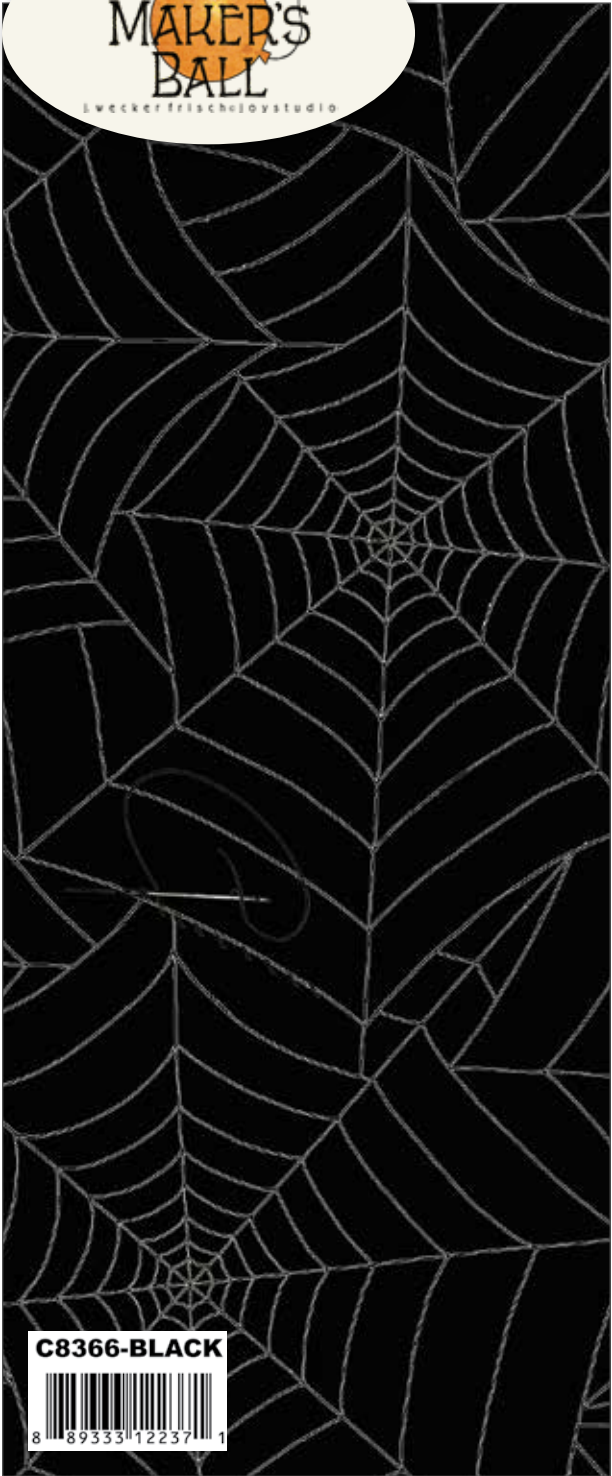
Actual Scale



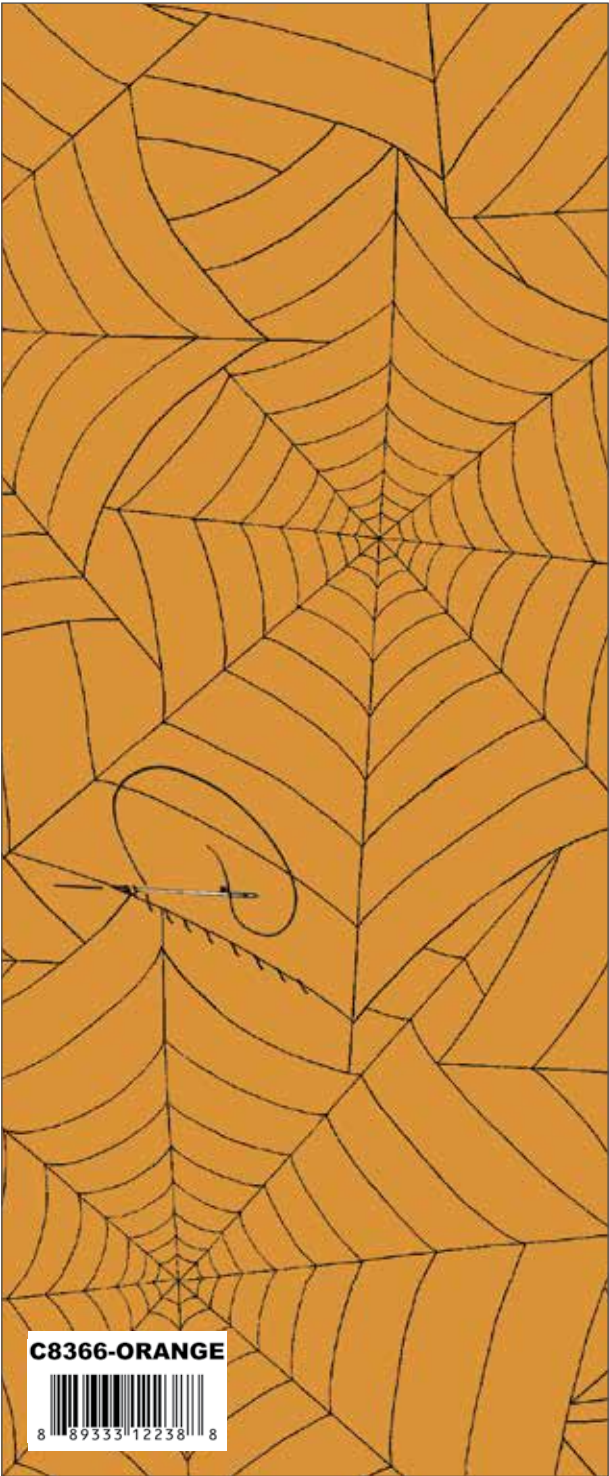
Orange Costume Bunting

Scaled to 23% | Actual size is 24" x 44"

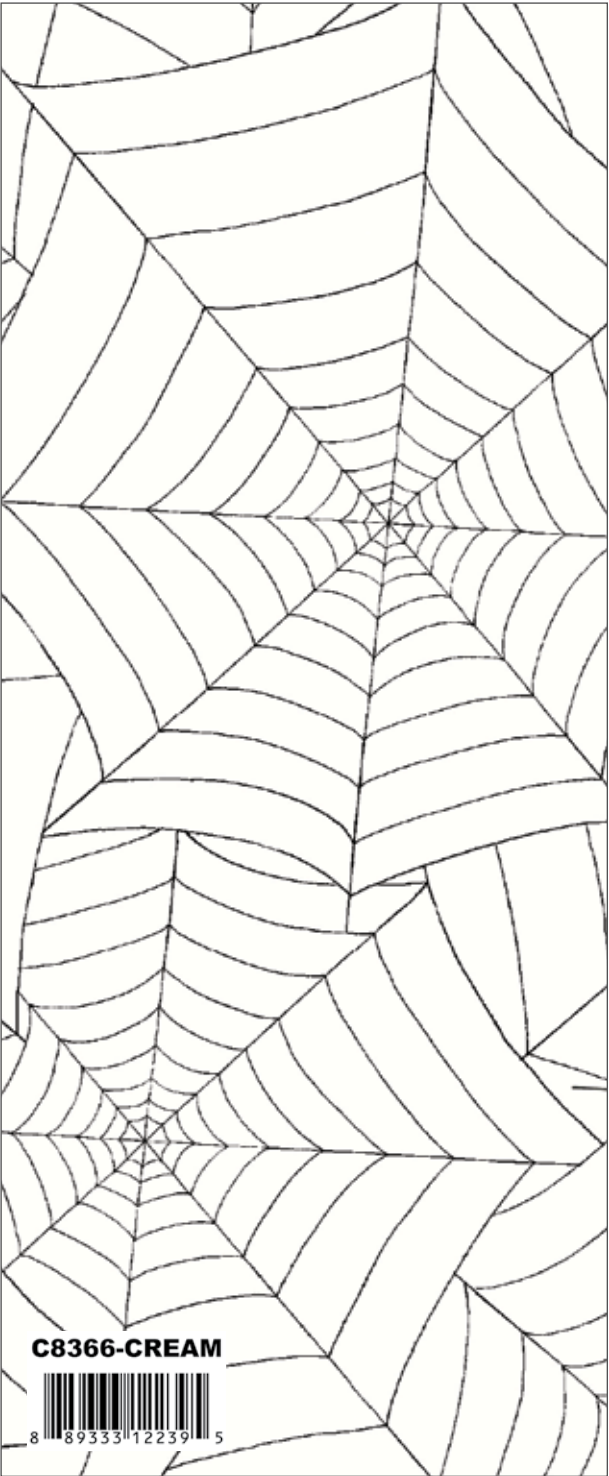




Black Costume Webs



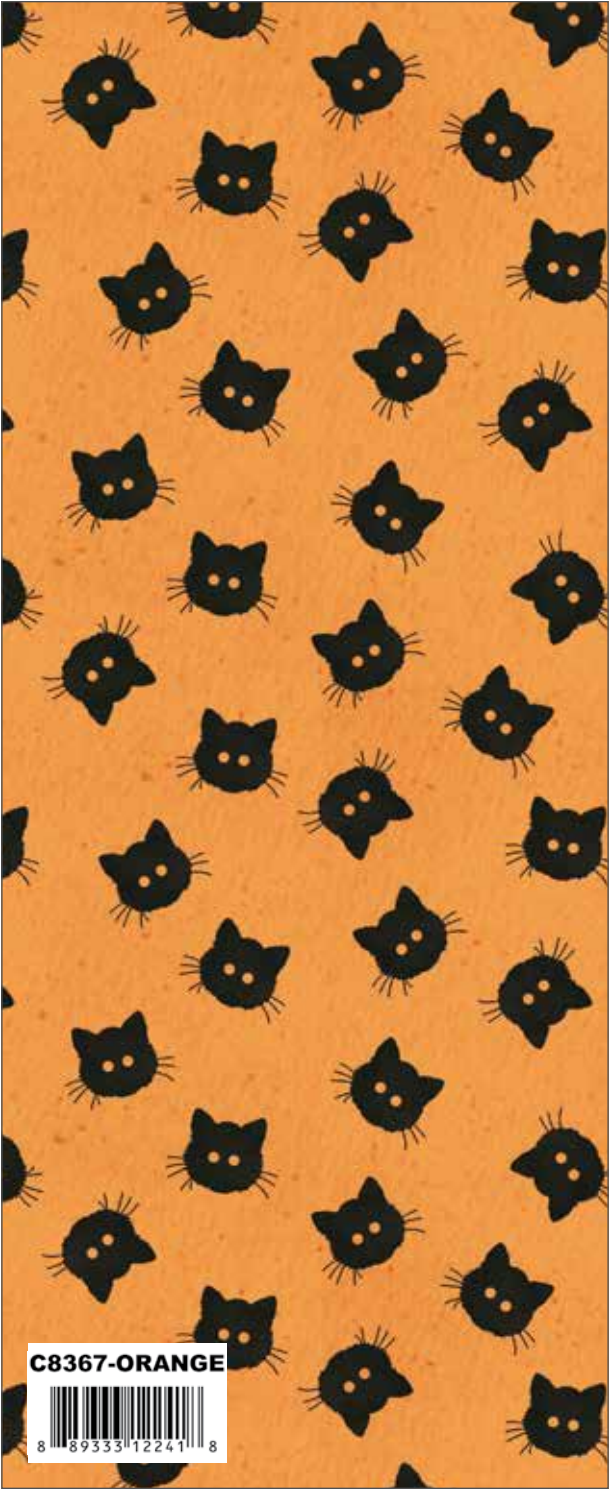
Orange Costume Webs



Cream Costume Webs



Black Costume Scaredy Cat Buttons



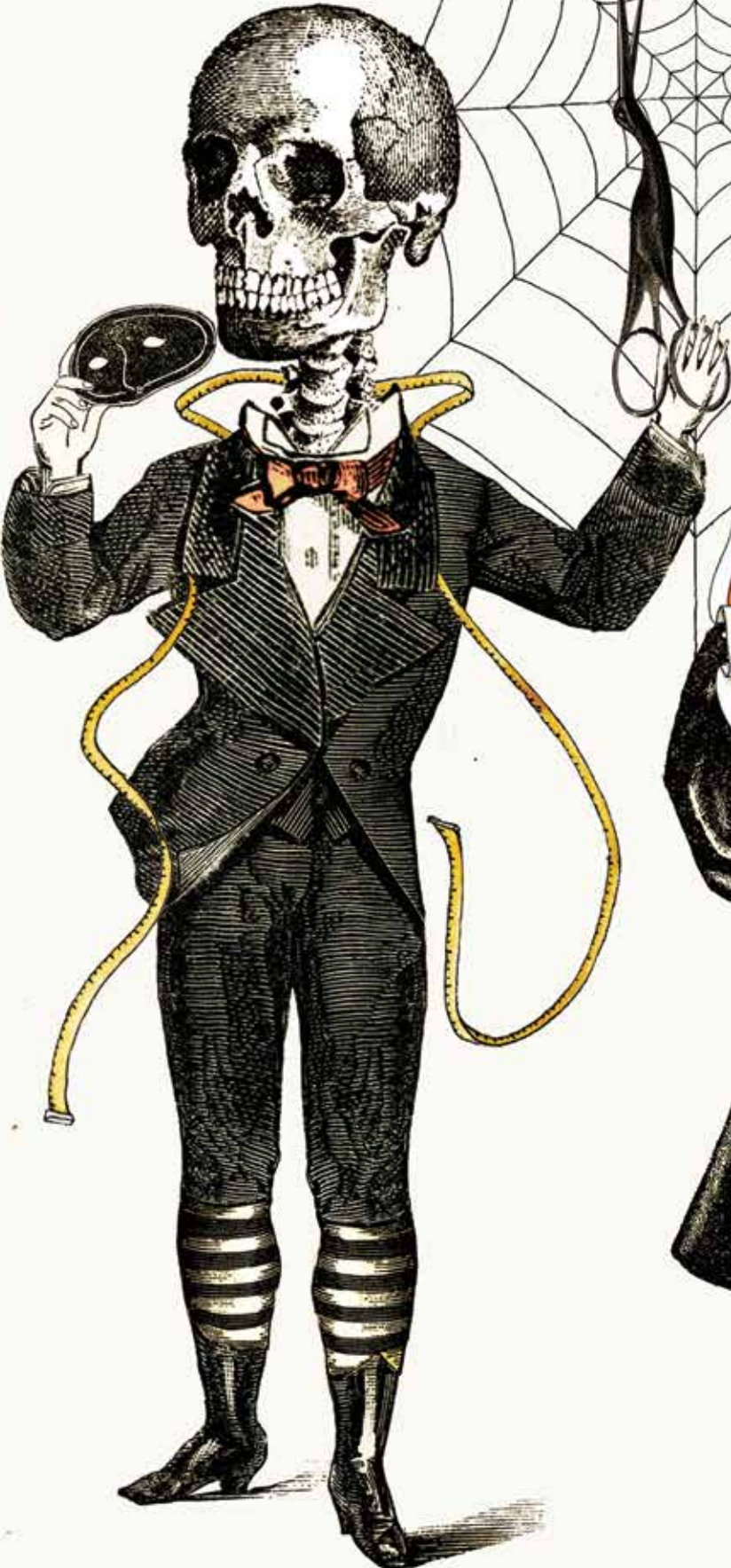
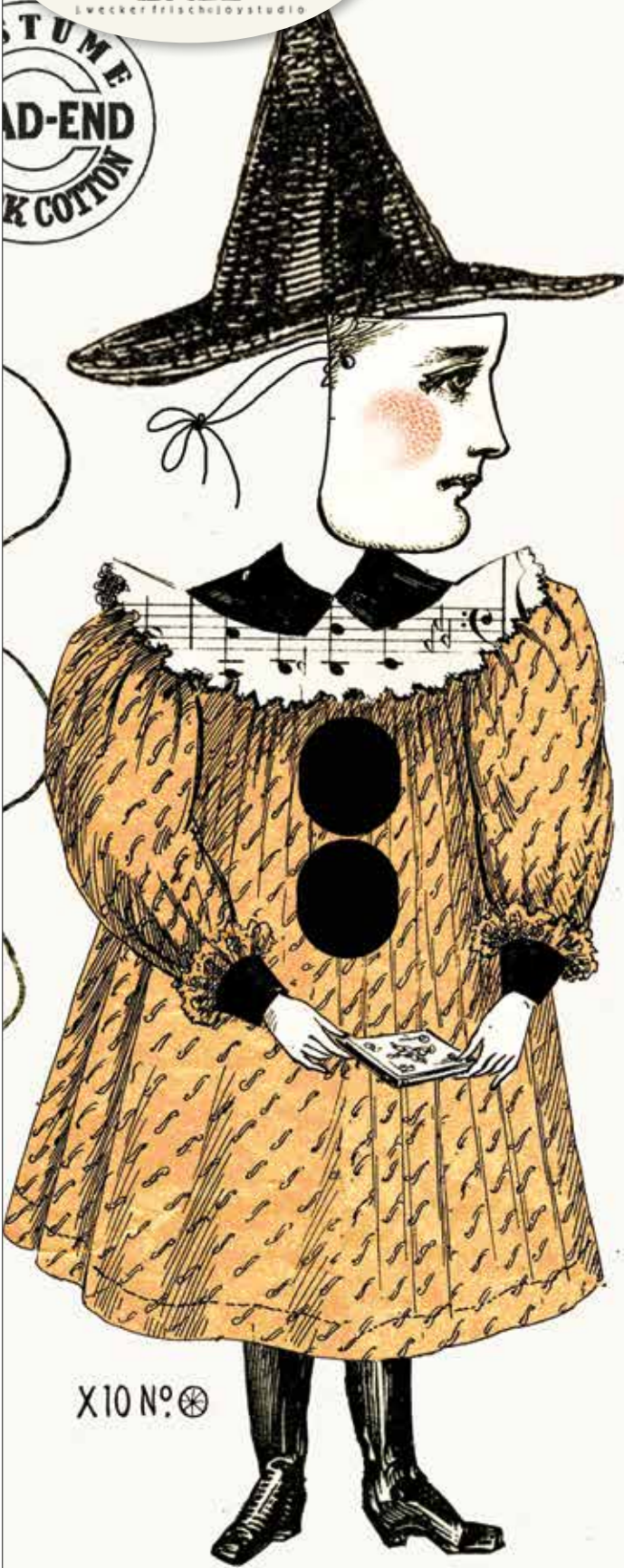
Orange Costume Scaredy Cat Buttons



Cream Costume Scaredy Cat Buttons

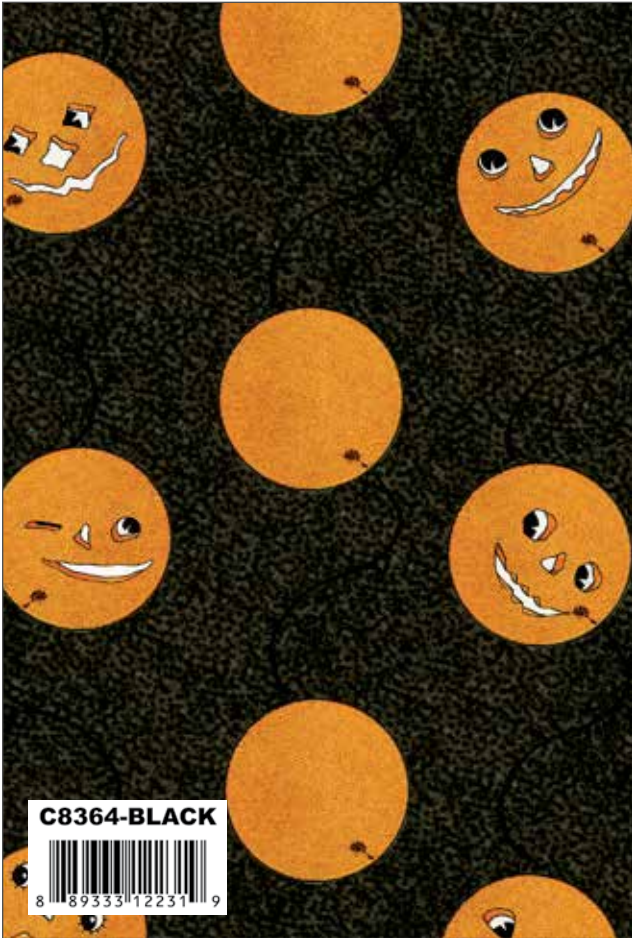


COSTUME  
MAKER'S  
BALL  
J. WECKER FRISCH LOVSTUDIO

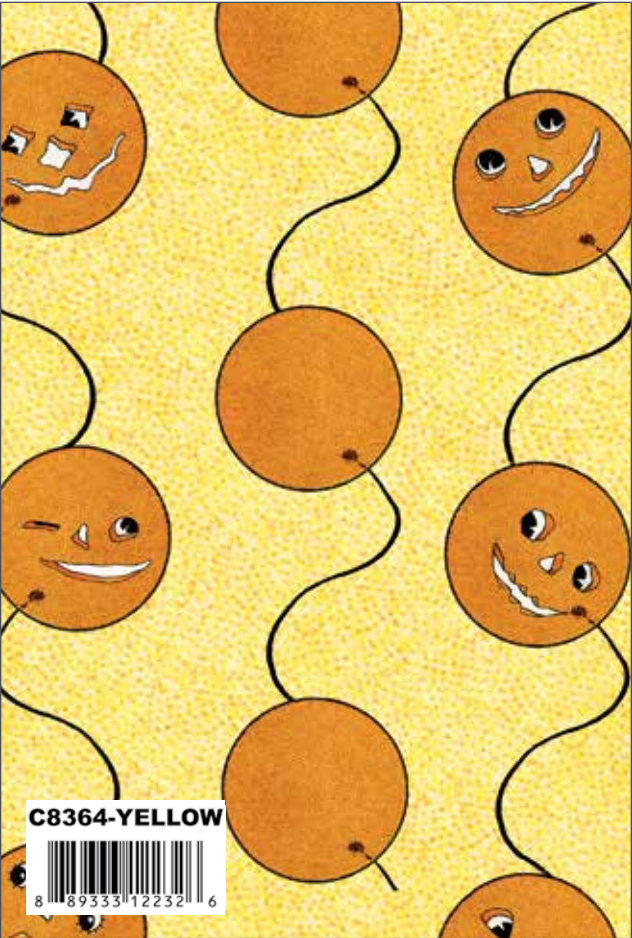


**C8363-CREAM** **Halloween Night • Costume Maker's Ball**

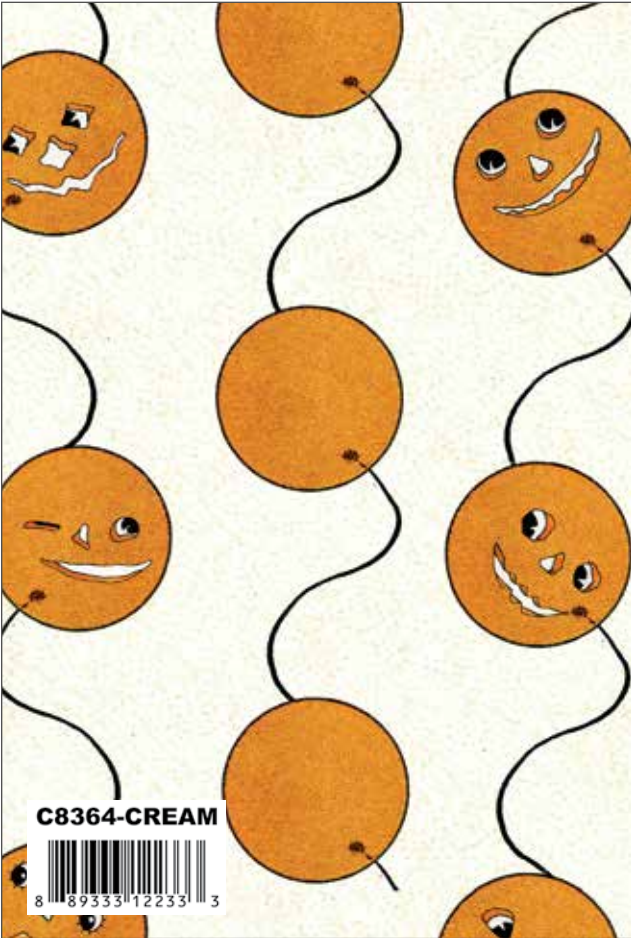
Cream Costume Border Stripe



Black Costume Jack-O-Lantern Balloons



Yellow Costume Jack-O-Lantern Balloons



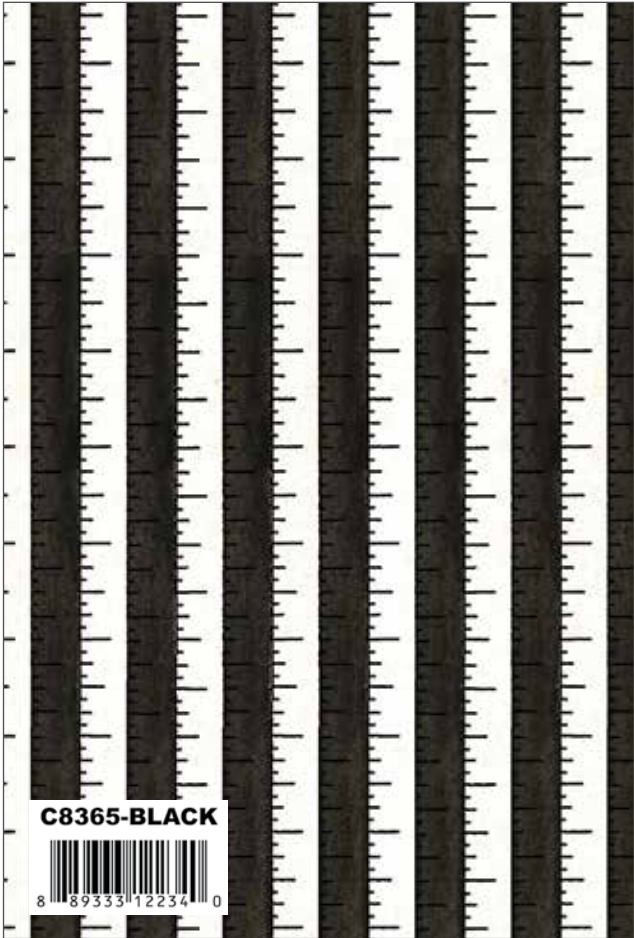
Cream Costume Jack-O-Lantern Balloons





• SPELLS AND FORTUNE SEWING • TICKETS 13

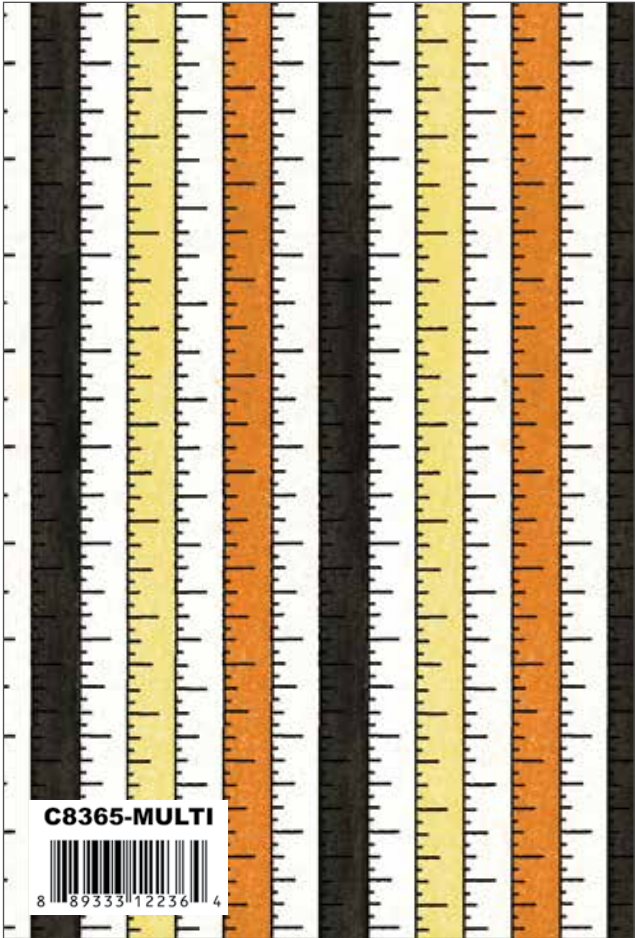
Actual Scale



Black Costume Tape Measure



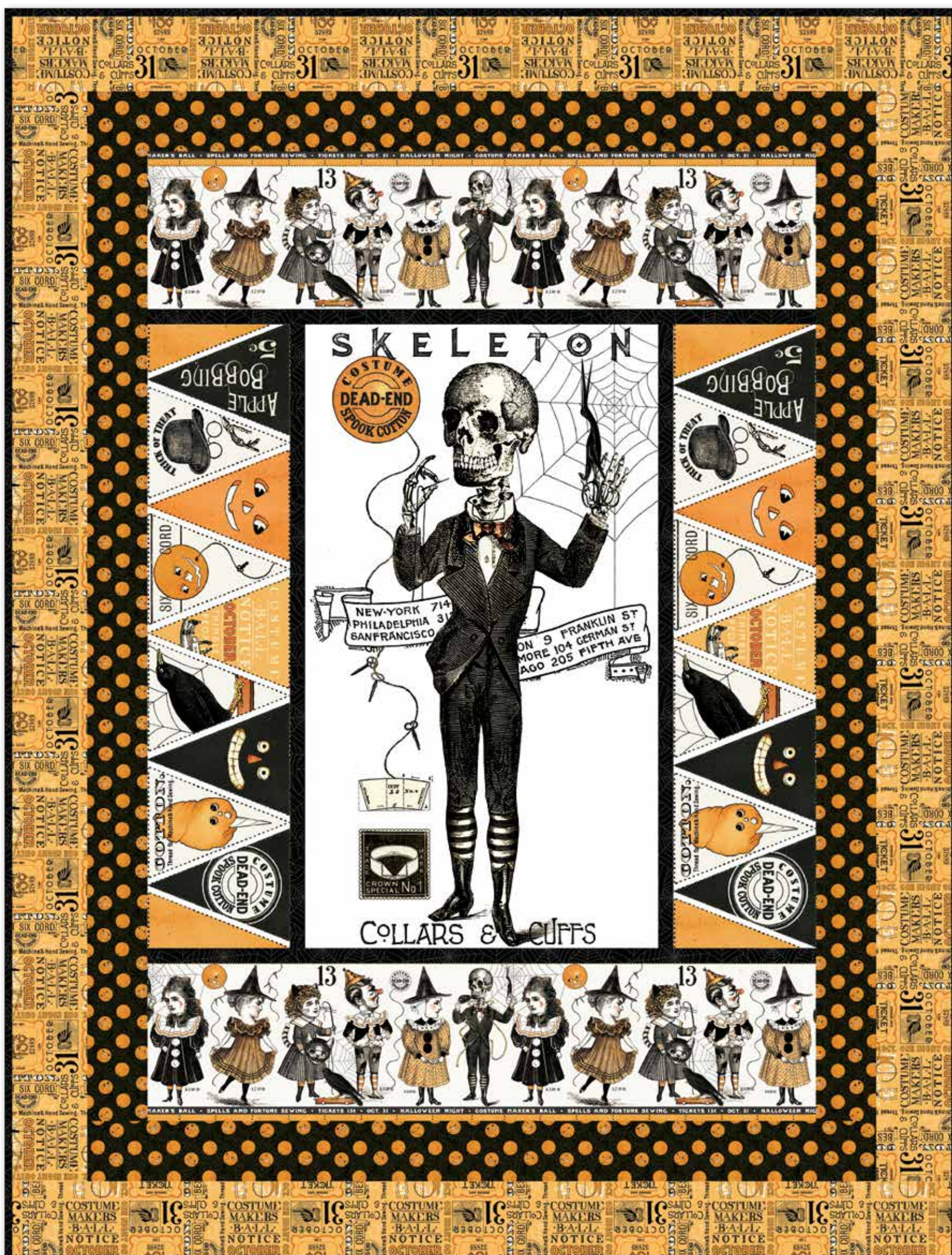
Orange Costume Tape Measure



Multi Costume Tape Measure



## Step Right Up by J. Wecker Frisch



Step Right Up Quilt Size 63 1/2" x 83 1/2"

### Fabric Requirements

- 1 Panel P8360 White Costume Main
- 1 Panel P8362 Orange Costume Bunting
- 1 3/8 Yards C8363 Cream Costume Border Stripe
- 1 Yard C8364 Black Costume Jack-o-Lantern Balloons
- 1 1/4 Yards C8368 Orange Costume Ticket Text
- 7/8 Yard C8366 Black Costume Webs (Includes Stop Border and Binding)



Party Patch by J. Wecker Frisch



Party Patch Quilt Size 68 1/2" x 68 1/2"

Fabric Requirements

- 1 10" Stacker Bundle 10-8360-42
- 1 Panel Bundle 1P-8360-4
- 3/8 Yard C8366 Black Costume Webs
- 1 3/8 Yards C8368 Orange Costume Ticket Text
- 5/8 Yard C8364 Black Costume Jack-o-Lantern Balloons (Binding)

Free Quilt Pattern Available at  
[www.rileyblakedesigns.com](http://www.rileyblakedesigns.com)



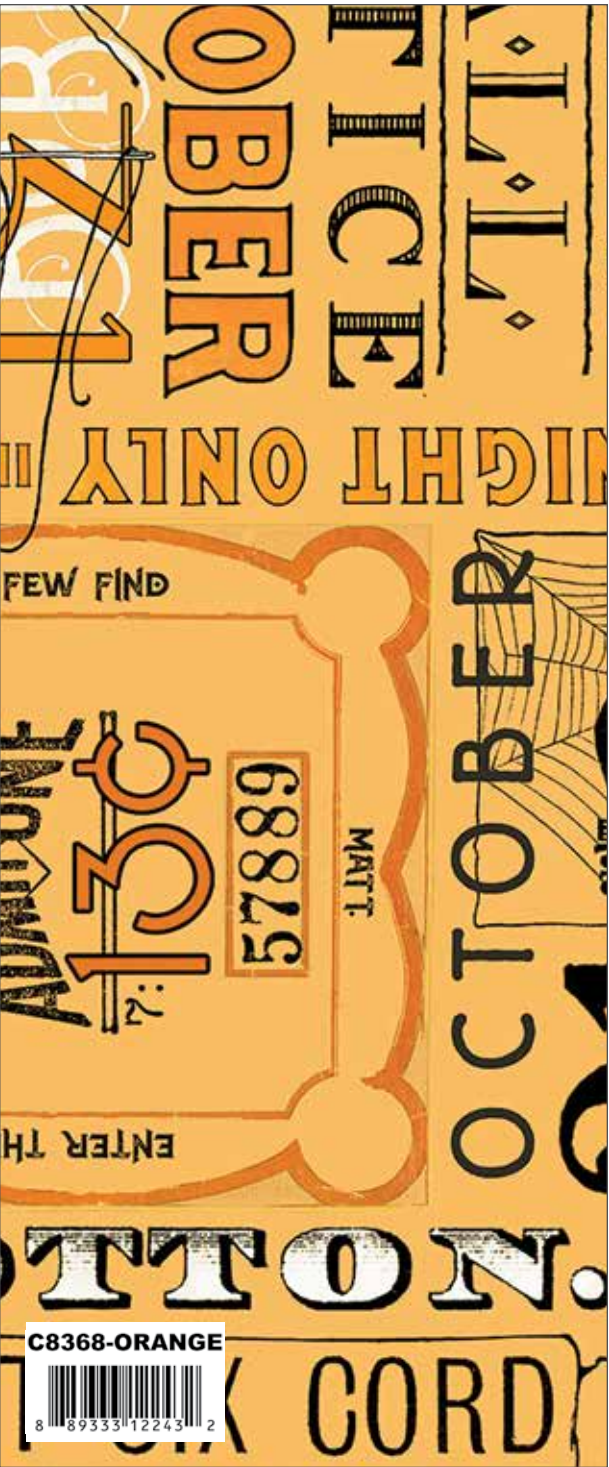




Cream Costume Ticket Text



Black Costume Ticket Text



Orange Costume Ticket Text



Cream Costume Ticket Grid



Yellow Costume Ticket Grid



Orange Costume Ticket Grid



## About the Line

Costume Maker's Ball was inspired by a rare set of antique sewing patterns from the late 1800's. Enhanced vintage illustrations and thoughtfully placed hand work add just the right amount of visual interest to this engaging, edgy collection! In keeping with the designer's Halloween point of view, the group offers a slightly creepy appeal in a fun and modern/vintage sort of way. The sophisticated fall offering customers are eagerly waiting to see!



### Panel Bundle includes:

- 1 Panel P8360 White Costume Main
- 1 Full Repeat P8361 Cream Costume Medium Patch
- 1 Full Repeat P8362 Orange Costume Bunting
- 1 Yard C8363 Cream Costume Border Stripe

### Panel Bundle

5-Inch Stacker  
42 Pieces



**5-8360-42**



10-Inch Stacker  
42 Pieces



**10-8360-42**



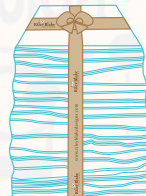
Rolie Polie  
40 Pieces



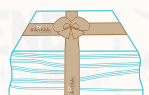
**RP-8360-40**



Fat Quarter



**FQ-8360-18**



**1P-8360-4**



## PRE-ORDER ONLY

ADD ANY LAMINATE WITH 100 YARDS MINIMUM

10-Yard Case Pack

**CP10-8360-23**



15-Yard Case Pack

**CP15-8360-23**



AVAILABLE APRIL 2019

100% FINE COTTON 43/44" WIDE • MACHINE WASH COLD • NO CHLORINE BLEACH • TUMBLE DRY LOW • REMOVE PROMPTLY

Riley Blake Designs • 9646 South 500 West, Sandy, Utah 84070

Toll Free 1.888.768.8454 • Tel 801.816.0540 • Fax 801.816.0542

www.rileyblakedesigns.com

Not intended for children's sleepwear

©2019 Riley Blake Designs and J. Wecker Frisch

MADE IN KOREA