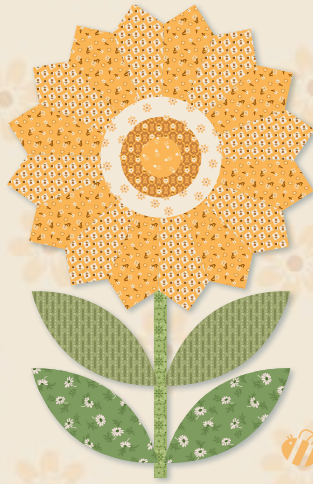


Lori Holt in COLOR No. 2



Denim & Daisy

by Lori Holt of Bee in my Bonnet



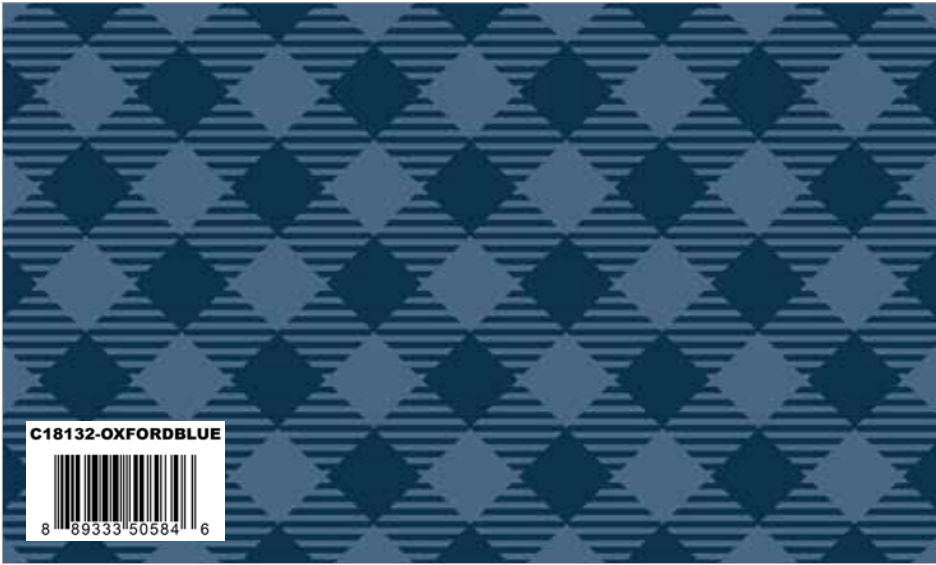
available October 2026 | R-1
last call May 1, 2026



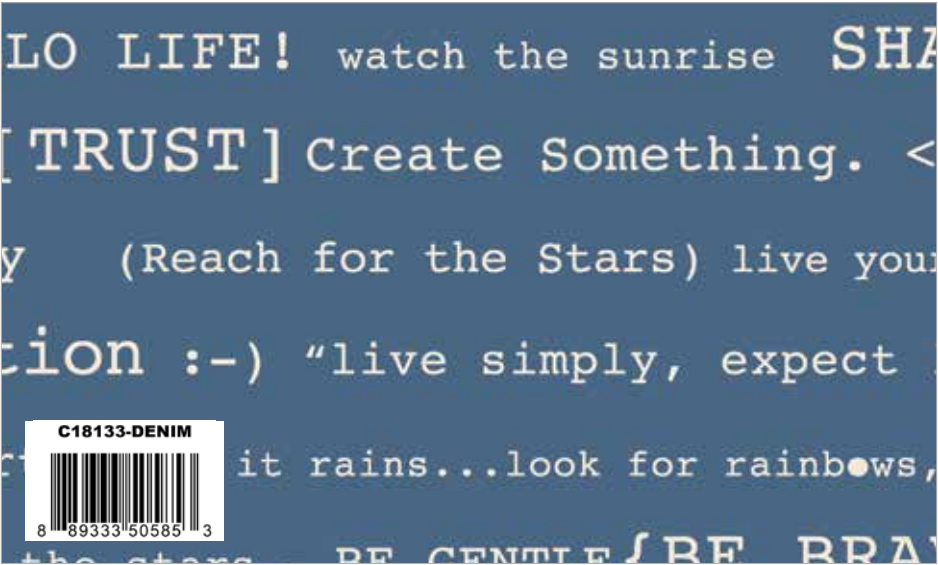
Oxford Blue Flowers



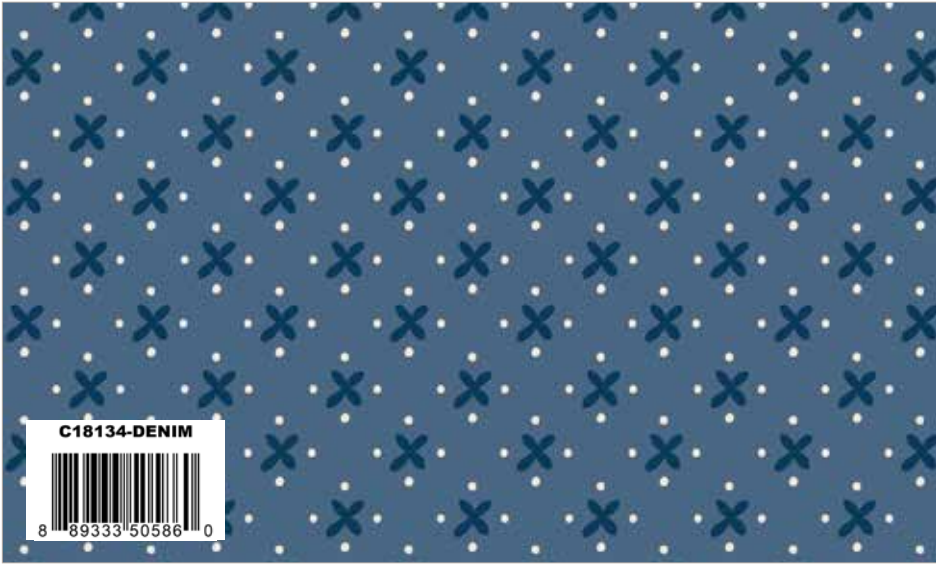
Denim Bouquet



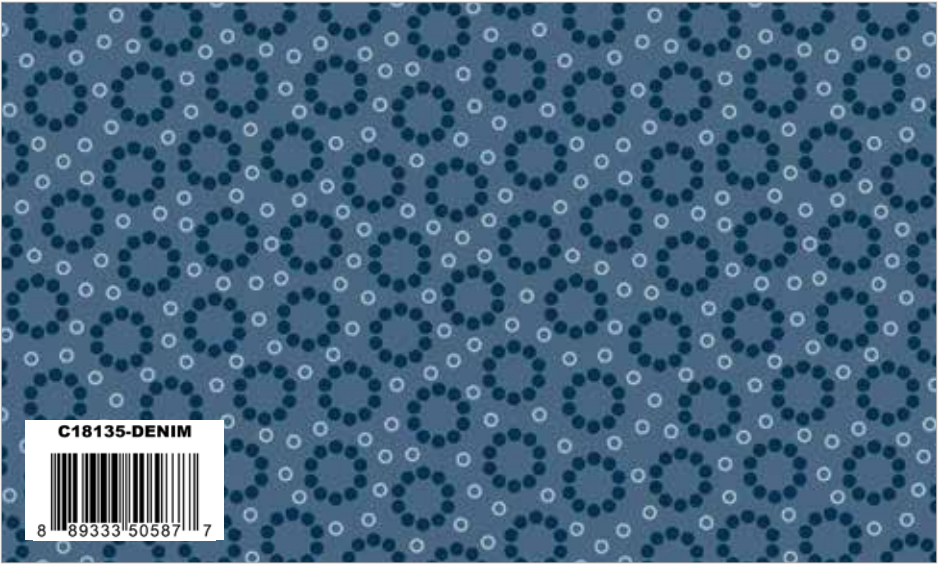
Oxford Blue Gingham



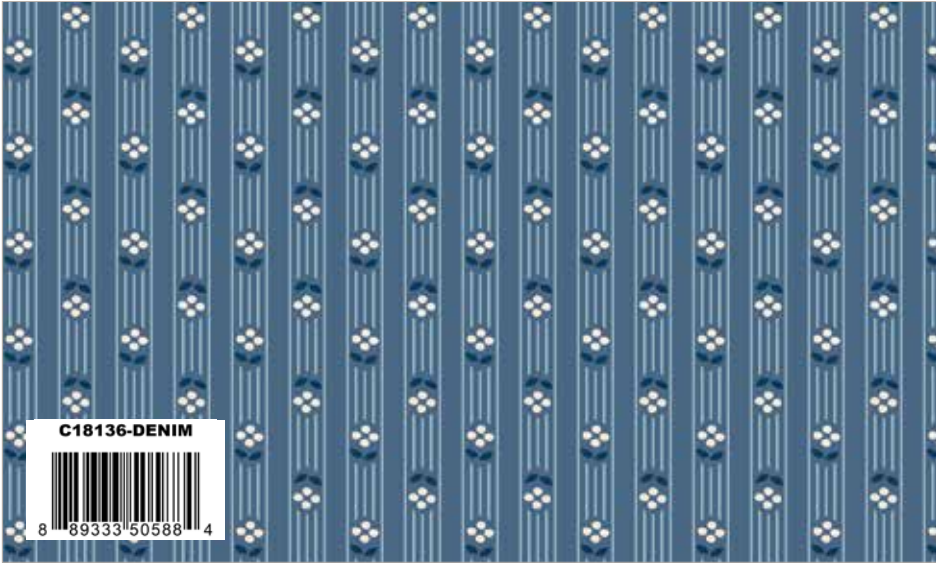
Denim Happy Text



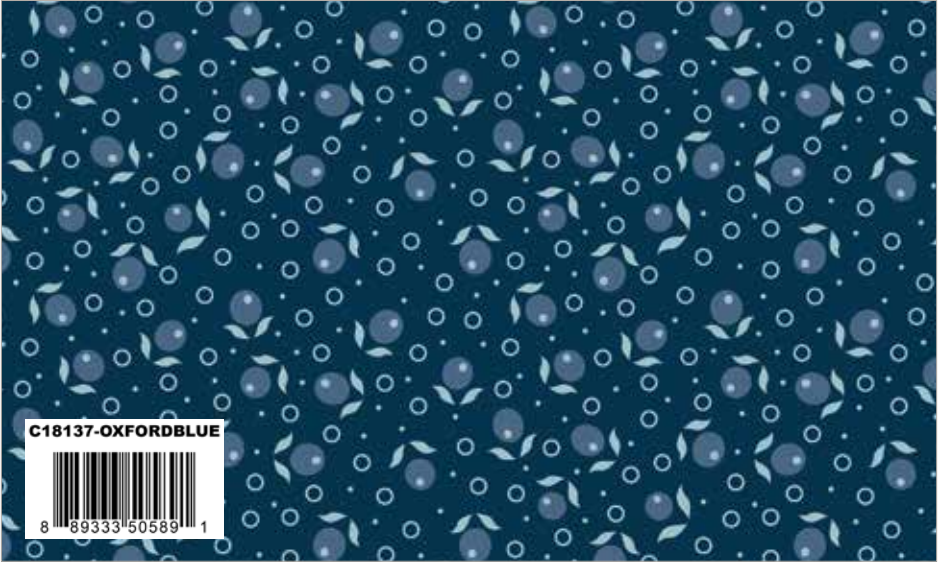
Denim Kisses



Denim Miller

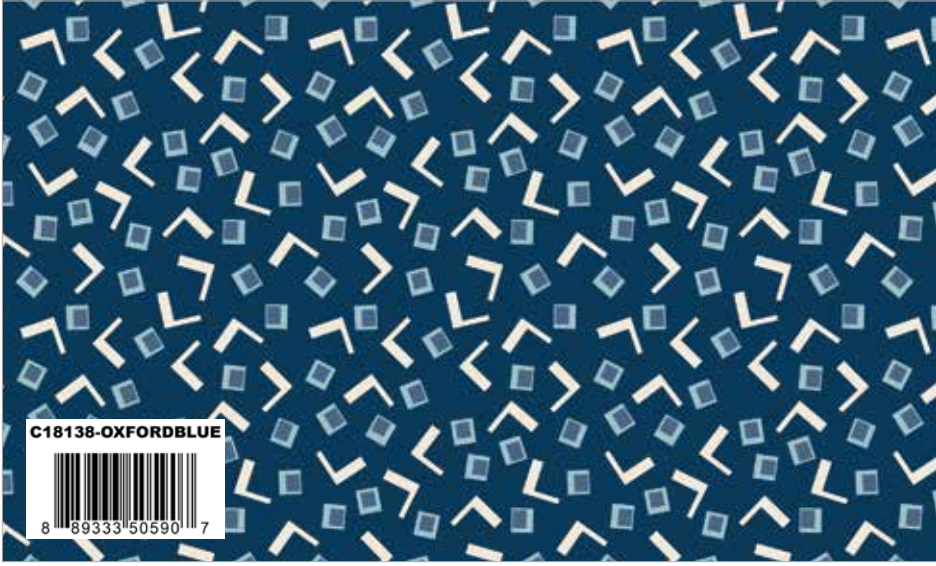


Denim Stripes



Oxford Blue Suzanne

58/60" 100% Cotton Lightweight Denim Fabric



Oxford Blue Tiny Squares



Blue Denim (4.5 oz. Cotton Twill)



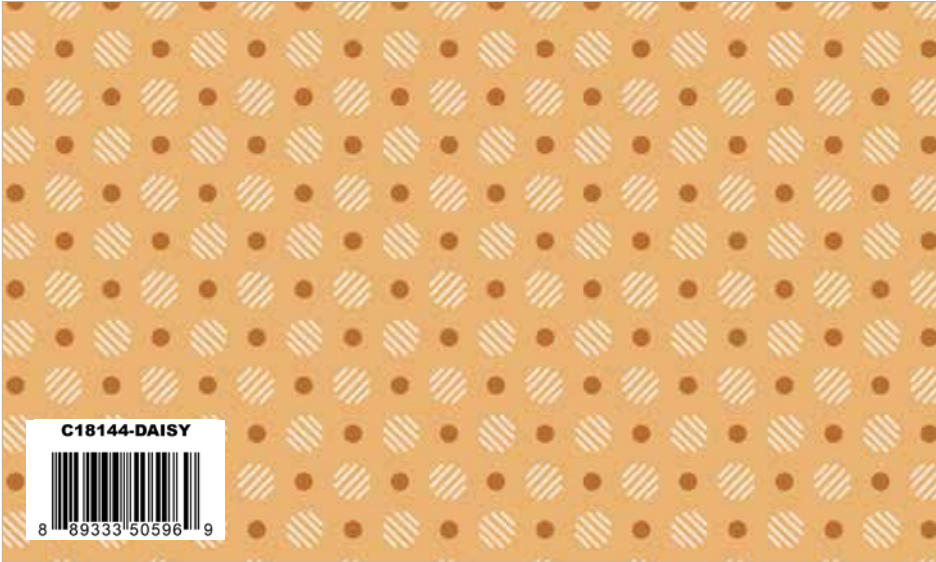
Stonewash Denim (4.5 oz. Cotton Twill)



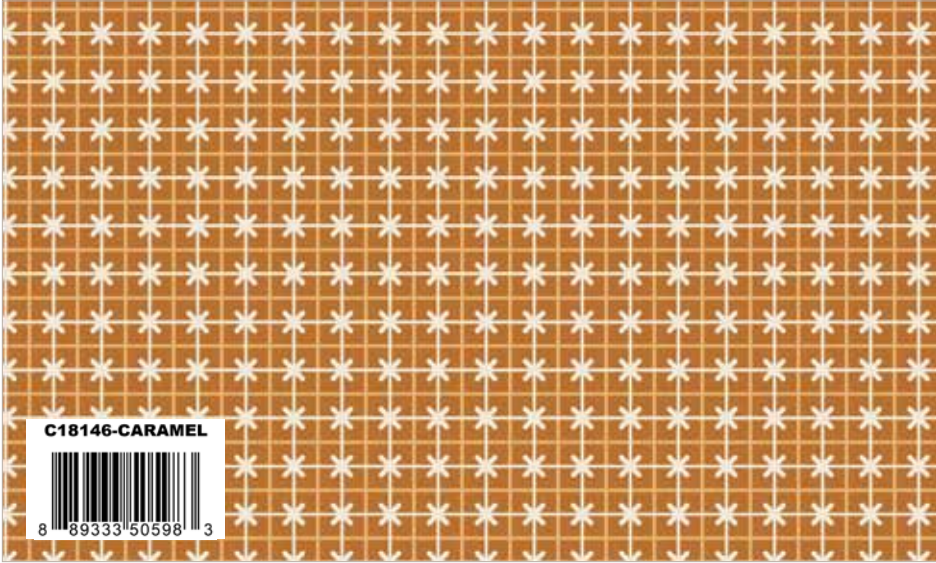
Daisy Hazel



Daisy Meadow



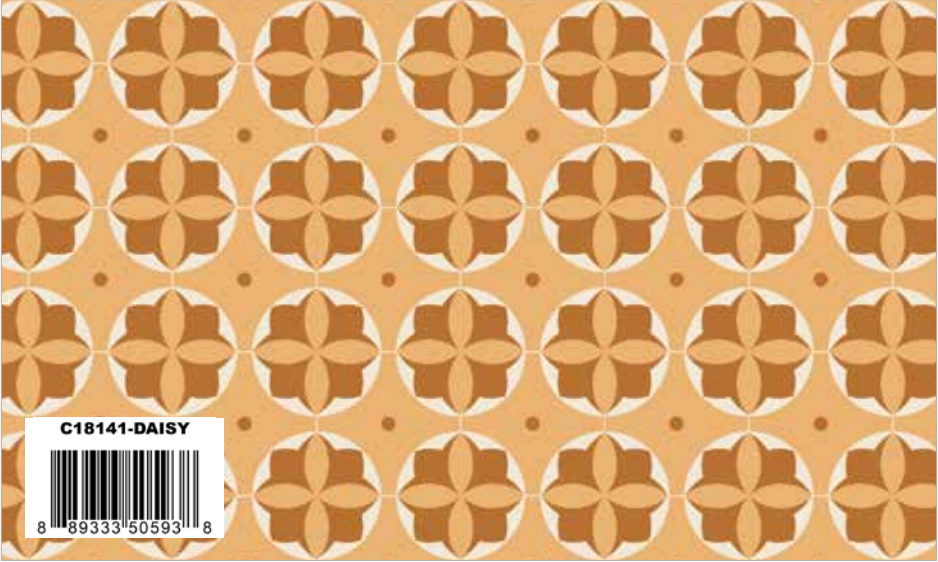
Daisy Polka Dot



Caramel Sweater



Daisy Casserole



Daisy Doris



Caramel Pioneer



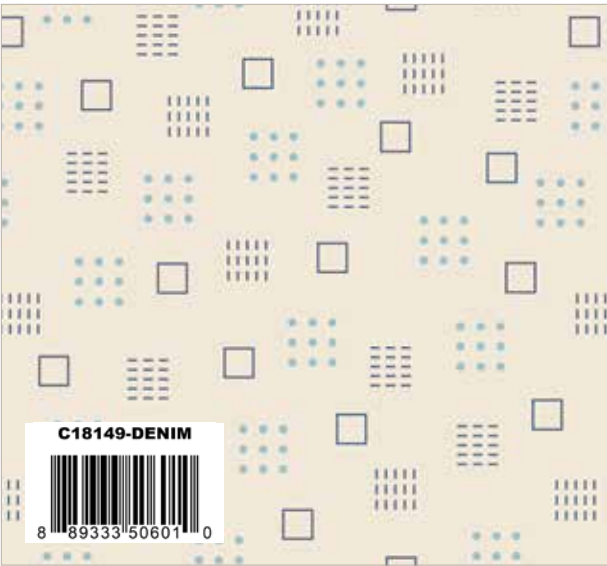
Daisy Tulips



Daisy Flower Pots



Denim Bonnet



Denim Squares



Daisy Daisies

Denim & Daisy 107/108" Wide Backs



Daisy Farmer's Almanac Wide Back



Multi Prairie Flower Wide Back



Denim Wallpaper Wide Back

Fresh as a Daisy Sew Along by Lori Holt



Quilt Size 76½" x 86½"



estimated requirements

Fat 1/4 of Each

- C14910-LETTUCE Ivy
- C17165-THYME Bonnet
- C17781-OLIVE Family
- C18141-DAISY Doris
- C18146-CARAMEL Sweater

1/4 Yard of Each

- C17163-THYME Bandana
- C18144-DAISY Polka Dot

1/3 Yard of Each

- C14903-BASIL Pineflower
- C17786-THYME Dish Towel
- C18140-DAISY Casserole

5/8 Yard of Each

- C18143-CARAMEL Pioneer
- C18149-DENIM Squares
- C18150-DAISY Daisies

7/8 Yard of Each

- C18132-OXFORDBLUE Gingham
- C18138-OXFORDBLUE Tiny Squares
- C18148-DENIM Bonnet

1 Yard of Each

- C18130-DENIM Bouquet
- C18131-OXFORDBLUE Flowers
- C18134-DENIM Kisses
- C18136-DENIM Stripes
- C18137-OXFORDBLUE Suzanne
- C18139-DAISY Hazel
- C18142-DAISY Meadow

Additional Fabrics

- 3/8 Yard C18145-DAISY Tulips
- 1/2 Yard C18147-DAISY Flower Pots
- 2/3 Yard C18133-DENIM Happy Text
- 3/4 Yard C18135-DENIM Miller

Suggested Backing

- 2 1/2 Yards WB181521-DAISY Farmer's Almanac



Collector Box Size: 11" x 12" x 5"

Includes fabric for quilt top and binding. Circle Rulers, Seed Rulers, & Pie Ruler sold separately.

AVAILABLE NOVEMBER 2026
Limited Quantities Available

Pre-order the
Fresh as a Daisy
Quilt Kit



The Sew Along Guide will be
available December 2026 on
www.rileyblakedesigns.com

Fresh as a Daisy Sew Along Products and Notions



Circle Rulers

STRULER-4194

8 47736 04194 1

Set of 4 Circle Rulers
2", 4", 6", & 9"

Seed Rulers

ST-18059

8 89333 18059 3

Pie Ruler

ST-4815

8 89333 04815 2

Products & Notions Needed/Suggested

STRULER-4194 2", 4", 6", & 9" Circle Ruler Set

ST-18059 Seed Rulers

ST-4815 Pie Ruler

Trim-It™ Ruler Sizes: 8½", 10½", 12½", 14½", 16½", 18½"

(1) Package STVT-50737 Daisy Large Vintage Trim

(1) Package ST-34006 Precut 14" Squares Sew-In Interfacing

N039-464-06 Clover 1/4" Bias Tape Maker

N039-464-12 Clover 1/2" Bias Tape Maker

ST-50232 Sew Simple Shaper™

ST-8517 Nifty Needles™

ST-8644 Appliqué Pretty Pins™

ST-34011 Lori Holt Sweet Sewing 9" Scissors

ST-46808 Lori Holt Honey Bee 5" Scissors

ST-40885 Denim Flower Power Magnetic Pin Holder

ST-36046 Busy Bee Mechanical Pencils

ST-50848 Denim & Daisy Washi Tape

N093-GLUE Sue Daley Glue

Thread Colors: Butterscotch, Daisy, Linen, Dream & Denim

Denim & Daisy Design Boards

Bee in my Bonnet Cutting Mats

Seams Sew Easy™ Seam Guide

RTY-2C-RED Quick-Change Rotary Cutter by Olfa x Lori Holt

ST-11311 12" Tailor's Clapper & ST11312 7" Quilter's Clapper

ST-40888 Quilter's Water Brush

1/4" Bias Tape Maker

N039-464-06

30051221505240

1/2" Bias Tape Maker

N039-464-12

30051221505257

Sew Simple Shaper™

ST-50232

8 89333 50232 6

Sew-In Interfacing

Precut Sew-In Interfacing
14" x 14" Squares
50 per pack

ST-34006

8 89333 34006 5

9" Sweet Sewing Scissors

ST-34011

8 89333 34011 9

Honey Bee 5" Scissors

ST-46808

8 89333 46808 0

Lori Holt Confetti Cotton Thread Colors

NEW Caramel
RBTH-49643

8 25161 49643 7

Daisy
RBTH-49570

8 25161 49570 6

Dream
RBTH-49561

8 25161 49561 4

Denim
RBTH-49551

8 25161 49551 5

NEW Linen
RBTH-49644

8 25161 49644 4

Sue Daley Glue

N093-GLUE

7 01715 77563 3

Quilter's Water Brush

ST-40888

8 89333 40888 8

- Use for pressing open intersecting seams when making patchwork blocks
- 4 brushes per pack
- Soft plastic
- MOQ: Sold in packs of 5

Appliqué Pretty Pins

ST-39772

8 89333 39772 4

Nifty Needles™

ST-8517

8 89333 08517 1

Large Ric-Rac Vintage Trim
NEW Daisy

STVT-50737

8 89333 50737 6

Charmed Table Topper or Baby Quilt by Lori Holt

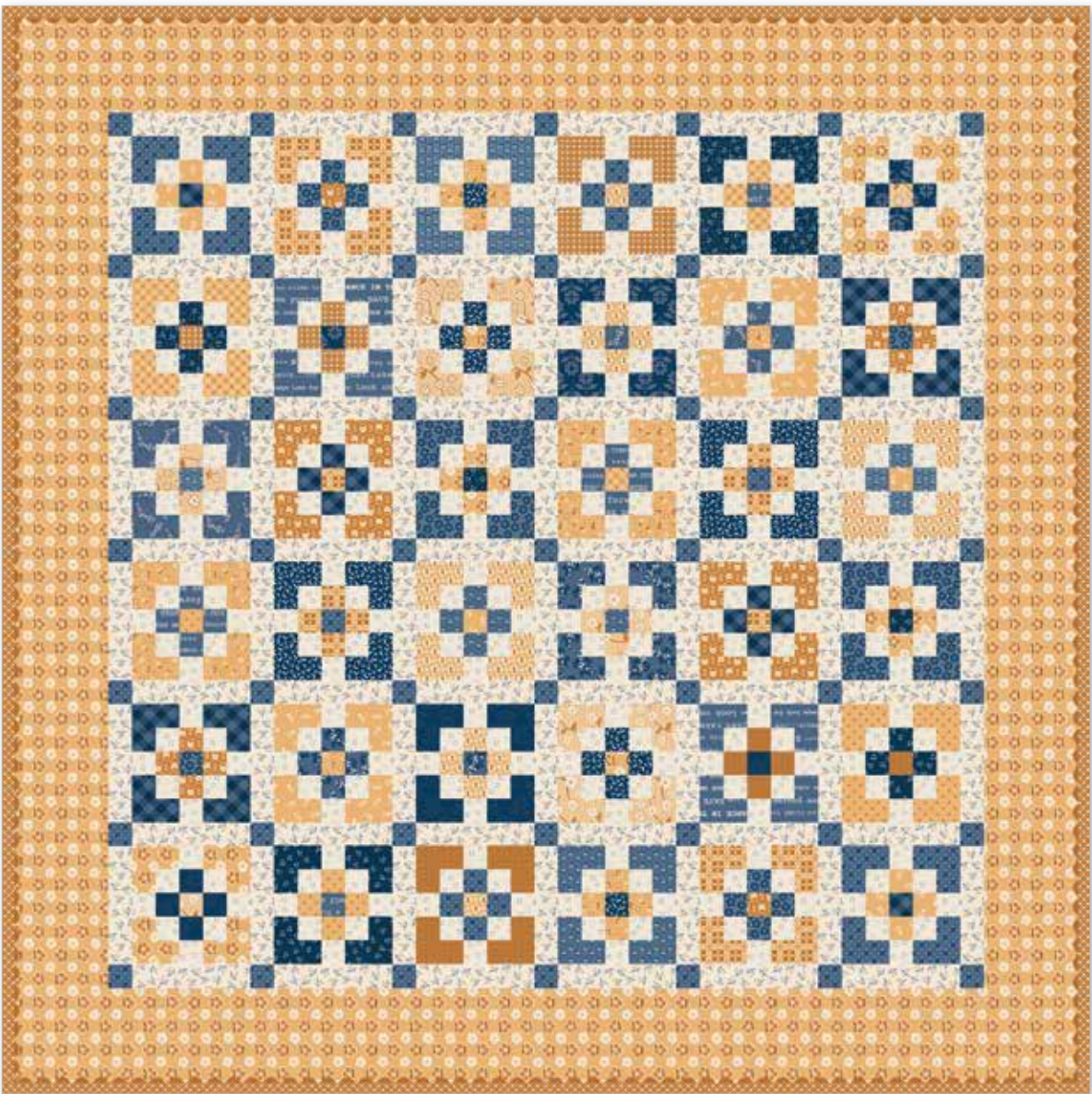
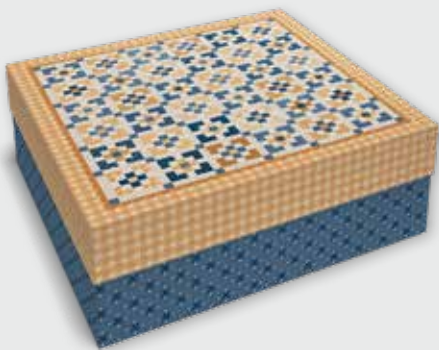


Table Topper/Quilt Size 45½" x 45½"



Collector Box Size: 8" x 8" x 3"

Includes exclusive pattern and fabric for baby quilt or Table Topper and binding

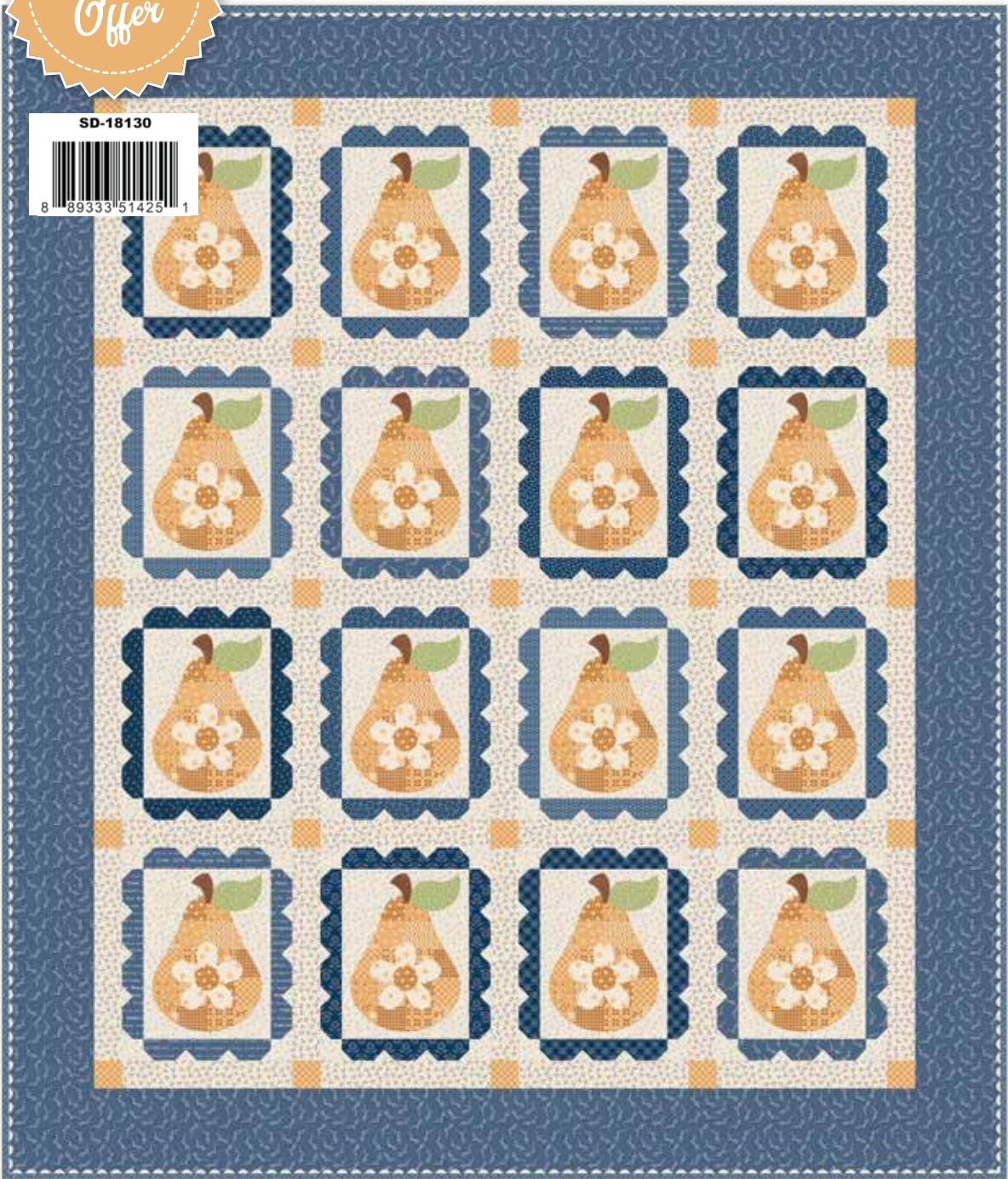
Suggested Backing
1 1/2 Yards WB18152-MULTI Prairie Flower

AVAILABLE NOVEMBER 2026
Limited Quantities Available

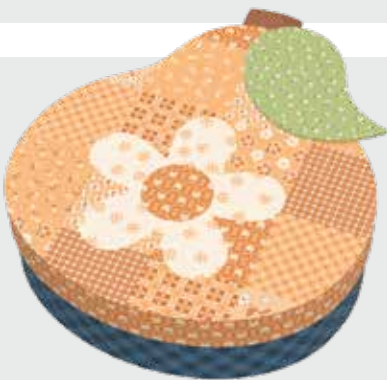
Pre-order the Charmed
Table Topper or Baby Quilt Kit



Sweet Golden Pears by Lori Holt



Quilt Size 70½" x 82½"

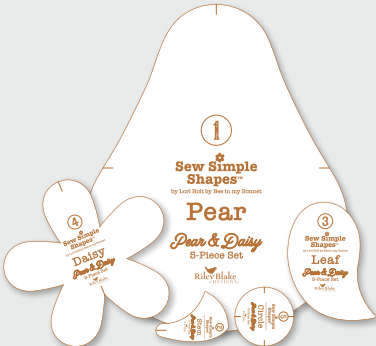


Collector Box Size: 13½" x 11¼" x 3¼"

Includes exclusive pattern, set of Pear Sew Simple Shapes™, and fabric for quilt top and binding

Suggested Backing:
2 1/4 Yards WB18153-DENIM Wallpaper

AVAILABLE NOVEMBER 2026
Limited Quantities Available



Pre-order the
Sweet Golden Pears
Quilt Kit



Cheerful by Lori Holt



Quilt Size 72½" x 90½"

estimated requirements

1/3 Yard of Each

- C18130-DENIM Bouquet
- C18131-OXFORDBLUE Flowers
- C18133-DENIM Happy Text
- C18134-DENIM Kisses
- C18135-DENIM Miller
- C18136-DENIM Stripes
- C18137-OXFORDBLUE Suzanne
- C18138-OXFORDBLUE Tiny Squares
- C18139-DAISY Hazel
- C18140-DAISY Casserole
- C18141-DAISY Doris
- C18142-DAISY Meadow
- C18143-CARAMEL Pioneer
- C18144-DAISY Polka Dot

1/3 Yard of Each (Continued)

- C18145-DAISY Tulips
- C18146-CARAMEL Sweater
- C18147-DAISY Flower Pots

7/8 Yard of Each

- C18148-DENIM Bonnet
- C18149-DENIM Squares
- C18150-DAISY Daisies

Additional Fabrics

- 1 1/8 Yards C18132-OXFORDBLUE Gingham (Includes Binding)
- 2 1/4 Yards WB18152-MULTI Prairie Flower (Backing)

Notions Needed/Suggested

- (1) Package STVT-50741 Oxford Blue Large Vintage Trim

FREE PATTERN
AVAILABLE ON OUR WEBSITE
OCTOBER 2026
www.rileyblakedesigns.com

Birdsong by Lori Holt – Published by It’s Sew Emma



Quilt Size 74½" x 98½"

estimated requirements

1/2 Yard of Each

- C18140-DAISY Casserole
- C18141-DAISY Doris
- C18142-DAISY Meadow
- C18144-DAISY Polka Dot
- C18145-DAISY Tulips
- C18147-DAISY Flower Pots

5/8 Yard of Each

- C18130-DENIM Bouquet
- C18131-OXFORDBLUE Flowers
- C18132-OXFORDBLUE Gingham
- C18133-DENIM Happy Text
- C18134-DENIM Kisses
- C18135-DENIM Miller
- C18136-DENIM Stripes

5/8 Yard of Each (Continued)

- C18137-OXFORDBLUE Suzanne
- C18138-OXFORDBLUE Tiny Squares

7/8 Yard of Each

- C17781-OLIVE Family (Baked With Love)
- C17786-THYME Dish Towel (Baked With Love)

Additional Fabrics

- 1/3 Yard C18146-CARAMEL Sweater
- 3/8 Yard C18143-CARAMEL Pioneer
- 2/3 Yard C18139-DAISY Hazel
- 1 1/3 Yards C18149-DENIM Squares
- 1 7/8 Yards C18150-DAISY Daisies
- 3 5/8 Yards C18148-DENIM Bonnet (Background)
- 7/8 Yard C18136-DENIM Stripes (Binding)
- 2 3/8 Yards WB18153-DENIM Wallpaper (Backing)

Notions Needed/Suggested

- (1) Skein DMC Ecru for Birds' Eyes

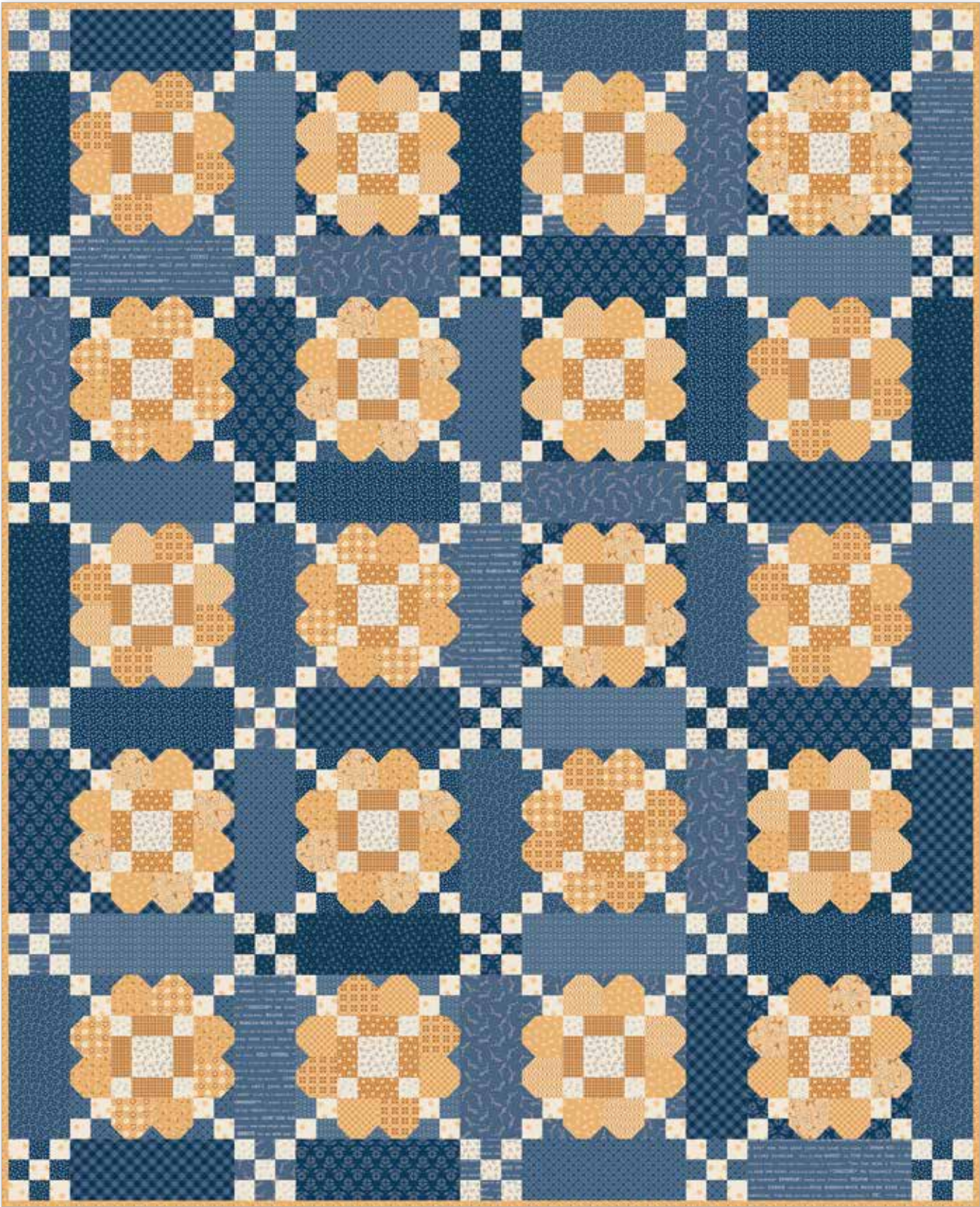


Pre-order the
P051-ISE-329
Quilt Pattern



6 69185 32965 0

Daisy Chain Quilt & Runner by Lori Holt – Published by It’s Sew Emma



Quilt Size 71" x 87½"

estimated requirements

QUILT

3/8 Yard of Each

- C18143-CARAMEL Pioneer
- C18146-CARAMEL Sweater

1/2 Yard of Each

- C18139-DAISY Hazel
- C18140-DAISY Casserole
- C18141-DAISY Doris
- C18142-DAISY Meadow
- C18144-DAISY Polka Dot
- C18145-DAISY Tulips
- C18147-DAISY Flower Pots
- C18148-DENIM Bonnet

3/4 Yard of Each

- C18130-DENIM Bouquet
- C18131-OXFORDBLUE Flowers
- C18132-OXFORDBLUE Gingham
- C18133-DENIM Happy Text
- C18134-DENIM Kisses
- C18135-DENIM Miller
- C18136-DENIM Stripes
- C18137-OXFORDBLUE Suzanne
- C18138-OXFORDBLUE Tiny Squares
- C18150-DAISY Daisies

Additional Fabrics

- 5/8 Yard C18149-DENIM Squares
- 7/8 Yard C18142-DAISY Meadow (Binding)
- 2 1/4 Yards WB18152-MULTI Prairie Flower (Backing)



Runner Size 30½" x 84½"

estimated requirements

RUNNER

Fat 1/8 of Each

- C18139-DAISY Hazel
- C18140-DAISY Casserole
- C18141-DAISY Doris
- C18142-DAISY Meadow
- C18144-DAISY Polka Dot
- C18145-DAISY Tulips
- C18147-DAISY Flower Pots

Fat 1/4 of Each

- C18130-DENIM Bouquet
- C18131-OXFORDBLUE Flowers
- C18132-OXFORDBLUE Gingham
- C18133-DENIM Happy Text
- C18134-DENIM Kisses
- C18135-DENIM Miller
- C18136-DENIM Stripes
- C18137-OXFORDBLUE Suzanne
- C18138-OXFORDBLUE Tiny Squares
- C18143-CARAMEL Pioneer
- C18146-CARAMEL Sweater
- C18150-DAISY Daisies

Additional Fabrics

- 2/3 Yard C18149-DENIM Squares
- 1 1/8 Yards C18148-DENIM Bonnet
- 5/8 Yard C18132-OXFORDBLUE Gingham (Binding)
- 2 5/8 Yards C18131-OXFORDBLUE Flowers (Backing)

Notions Needed/Suggested

- (1) Package STVT-50741 Oxford Blue Large Vintage Trim



Pre-order the
P051-ISE-331
Quilt & Runner Pattern



Bloom and Grow by Lori Holt – Published by It’s Sew Emma



Quilt Size 63½" x 86½"

estimated requirements

Fat 1/8 of Each

- C18138-OXFORDBLUE Tiny Squares
- C18139-DAISY Hazel
- C18140-DAISY Casserole
- C18141-DAISY Doris
- C18142-DAISY Meadow
- C18144-DAISY Polka Dot
- C18145-DAISY Tulips
- C18147-DAISY Flower Pots

Fat 1/4 of Each

- C17781-OLIVE Family (Baked With Love)
- C17786-THYME Dish Towel (Baked With Love)
- C17793-ZUCCHINI Memories (Baked With Love)
- C18132-OXFORDBLUE Gingham
- C18143-CARAMEL Pioneer
- C18146-CARAMEL Sweater

1/2 Yard of Each

- C18131-OXFORDBLUE Flowers
- C18133-DENIM Happy Text
- C18134-DENIM Kisses
- C18135-DENIM Miller
- C18136-DENIM Stripes
- C18137-OXFORDBLUE Suzanne
- C18149-DENIM Squares

Additional Fabrics

- 1/3 Yard C18148-DENIM Bonnet Family
- 5/8 Yard C18130-DENIM Bouquet
- 2 1/8 Yards C18140-DAISY Casserole
- 3 1/4 Yards C18150-DAISY (Background)
- 2/3 Yard C18146-CARAMEL (Binding)
- 2 1/8 Yards WB18151-DAISY Farmer's Almanac (Backing)

Notions Needed/Suggested

- (1) Package STVT-50739 Caramel Large Vintage Trim

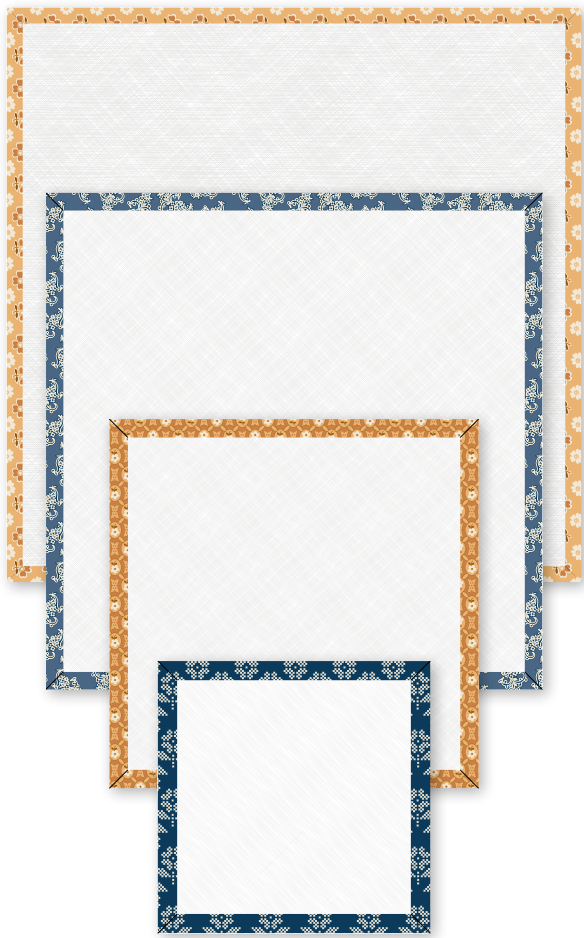


Pre-order the
P051-ISE-330
Quilt Pattern



Denim & Daisy Notions by Lori Holt of Bee in My Bonnet

Available October 2026



Denim & Daisy Design Boards

- Audition fabric for blocks
- Organize blocks that are cut and ready to sew
- Stack easily for storing
- Available in 4 sizes for different blocks
- MOQ: 5

Daisy
DB-50841

18-Inch

Denim
DB-50842

14-Inch

Caramel
DB-50843

10-Inch

Oxford Blue
DB-50844

7-Inch



Denim & Daisy Textured Washi Tape

- Pulls away cleanly with no residue
- Approx 10 yards per roll
- Includes 2 roll 1 inch wide and 2 rolls ½" wide
- MOQ: 4



Pear & Daisy Sew Simple Shapes™

- 5 Sew Simple Shapes™
- Constructed of sturdy plastic
- Features center marks
- Transparent for fussy cutting
- Works great with Lori's Sew-In Interfacing Pack and Precuts
- MOQ: 6



Watering Can Enamel Charm

- Approx. 2" x 2¼"
- MOQ: 10

Pear Leather Charm

- Approx. 2" x 4¼"
- MOQ: 5



Denim & Daisy Vinyl Project Bag

- Dimensions: Approximately 9" x 12"
- Perfect for cosmetics, sewing, cross stitch, or punch needle supplies and projects
- Lined
- MOQ: 5



Denim & Daisy Flower Pots

- Approx. sizes with drip tray
Large: W 6½" x H 6¼"
Medium: W 4½" x H 5¼"
Small: W 4" x H 4¼"
- 3 Lori-colored flower pots per set
- Plastic pots include removable drip trays
- Sold in a colorful gift box
- MOQ: 6

FG-50846

STLR-50857

ST-50847

FG-50852



Colors Selections by Lori Holt for Denim & Daisy

- 60wt 100% Extra Long Staple Egyptian Cotton
- Perfect for appliqué and piecing
- 1500yd spools from our Confetti Cotton threads collection
- MOQ: 5

NEW Caramel
RBTH-49643

Daisy
RBTH-49570

NEW Linen
RBTH-49644

Dream
RBTH-49561

Denim
RBTH-49551

Vintage Trim

- New, easy to hang packaging!
- 12 yards
- 100% Polyester
- MOQ: 6

5/8" - Daisy
STVT-50737

1/4" - Daisy
STVT-50738

5/8" - Caramel
STVT-50739

1/4" - Caramel
STVT-50740

5/8" - Oxford Blue
STVT-50741

1/4" - Oxford Blue
STVT-50742

Denim & Daisy Notions by Lori Holt of Bee in My Bonnet

Available October 2026



Denim & Daisy Cutting Mat 24" x 36"

- Triple layer, self-healing mat with grids on both sides for longer life
- Layouts designed by Lori Holt for her quilting style and general use
- Extra room around the outside for easier cutting on the borders
- Mat features Lori Holt’s signature colors, Denim & Daisy
- MOQ: 5



Denim & Daisy Bee Keeper Binder

- Use for Sew-Alongs
- Excellent for storing & organizing recipes, Sew Simple Shapes™, patterns, and sew along instructions & more
- Great for Lori's Busy Bee Quilt, & Stitch Binder pages
- Approximately 12¼" x 11½" x 2¾"
- D-Rings make for secure and easy page turning
- MOQ: 4



Fresh as a Daisy Quilt Puzzle

- 500 pieces
- Finished puzzle size 18" x 24"
- Features Lori's Fresh as a Daisy Sew Along Quilt
- MOQ: 6



Potted Daisy Quilt & Garden Accents Machine Embroidery (ME)



Machine Embroidery

- Potted Daisy Quilt**
(3 Sizes)
- 34" x 44"
6x10 Stitchable Area
- 44½" x 56½"
8x12 Stitchable Area
- 51" x 63¼"
9x14 Stitchable Area
- Apron**
One Size Fits All
5x7 Stitchable Area
- Bench Pillow**
14" x 30"
6x10 Stitchable Area

- Door Banner**
(2 Sizes)
- 9½" x 26"
5x7 Stitchable Area
- 11" x 30"
6x10 Stitchable Area
- Seed Packet Mini Wall Hangings** (3 Sizes)
- 5½" x 7½"
6x10 Stitchable Area
- 7½" x 10"
8x12 Stitchable Area
- 8½" x 11½"
9x14 Stitchable Area

- Flower Pot Wraps**
(3 Sizes) Made to fit the Bee in my Bonnet Flower Pot Set
- Large
6x10 Stitchable Area
- Medium
6x10 Stitchable Area
- Small
5x7 Stitchable Area
- Formats Included: .DST .EXP .HUS .JEF .PES .VIP .VP3 .XXX*
- Available November 2026

Potted Daisy Quilt
Estimated Shopping List*



*Final requirements will be posted before the release date



Garden Accents
Estimated Shopping List*



*Final requirements will be posted before the release date

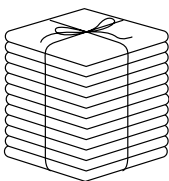




Advanced Sample Bundle

ONLY AVAILABLE THROUGH LOCAL RBD REPS

- Pre-order only
- One per customer
- Not available on website



ASY-FQ-18130-21



ASY Fat Quarter Bundle
21 Pieces



Lori Holt
@beelori1

Introducing

Lori Holt in Color by Lori Holt of Bee in my Bonnet is a fresh and inspiring series that invites makers to explore the beauty of color—two hues at a time. Each release in this twice-yearly series will highlight a perfectly paired duo, celebrating every shade and tone in Lori’s signature style. The second collection in the series, *Denim & Daisy* features exclusive fabrics, notions, and gift items in color combinations you’re sure to love. Whether you’re quilting, crafting, or collecting, Lori Holt in Color is a playful way to explore new color combinations to add even more creative possibilities to your sewing room. We can’t wait for you to sew along!

About the Line

Denim & Daisy by Lori Holt of Bee in my Bonnet is a charming collection that pairs classic denim blues with cheerful daisy yellows in a fresh mix of prints that feel both timeless and playful. From floral motifs to vintage geometrics, *Denim & Daisy* captures the feeling of a sunny afternoon in denim overalls, planting flowers and tidying up the potting shed. Whether you're sewing along to make the *Fresh as a Daisy* quilt or adding a pop of color to your sewing room, these shades of blue and yellow are sure to brighten your day.

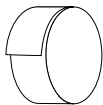


Denim
& Daisy

Scan to stay up-to-date on all
Lori Holt happenings & projects



precuts



RP-18130-40



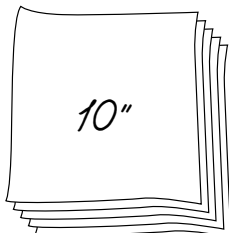
Rolie Polie
40 Pieces
(DN16106 & DN17192
not included)



5-18130-42



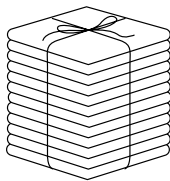
5-Inch Stacker
42 Pieces
(DN16106 & DN17192
not included)



10-18130-42



10-Inch Stacker
42 Pieces
(DN16106 & DN17192
not included)



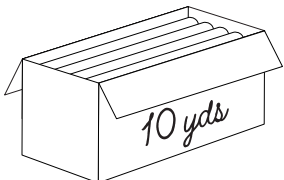
FQ-18130-21



Fat Quarter Bundle
21 Pieces
(DN16106 & DN17192
not included)

pre-order only

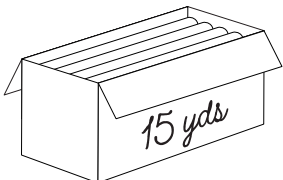
ADD ANY LAMINATE WITH 100 YARDS MINIMUM



CP10-18130-21



10-Yard Case Pack



CP15-18130-21



15-Yard Case Pack



1YD-18130-21



1-Yard Bundle
21 Pieces

WIDE BACKS ARE NOT INCLUDED IN CASE PACKS
DN16106 & DN17192 ARE NOT INCLUDED IN CASE PACKS

Denim & Daisy - Lori Holt in Color No. 2 by Lori Holt
available October 2026 **last call May 1, 2026**

100% FINE COTTON · 43/44" WIDE · MADE IN KOREA



4060 W 2100 N, STE A
Lehi, UT 84048-7837
888.768.8454 · 801.816.0540
www.rileyblakedesigns.com

©2026 Riley Blake Designs & Lori Holt

Machine Wash Cold
No Chlorine Bleach
Tumble Dry Low
Remove Promptly
Not Intended for Children's Sleepwear

The projects portrayed are virtual images. The look of the projects may differ with actual fabric.

The project virtual(s) shown may be different than the image shown on the pattern cover.

Approximate fabric requirements are listed to aid in estimating the amount of yardage to order and are subject to change.

Backing yardage is shown using the best use of fabric and may not be intended for directional fabric.