

DOUBLE LUSH VELVET



available December 2024 | R-5



LV16560





Churn Dash by Lori Holt of Bee in my Bonnet



Double Wedding Ring by Sandy Gervais



LV16563





BloomBerry Hexies by Minki Kim



Red Delicious Scallops by the RBD Designers



Backside

LV16566



8 89333 42669 1



LV16567



8 89333 42670 7



Backside

LV16568





LV16569



8 89333 42672 1

Backside

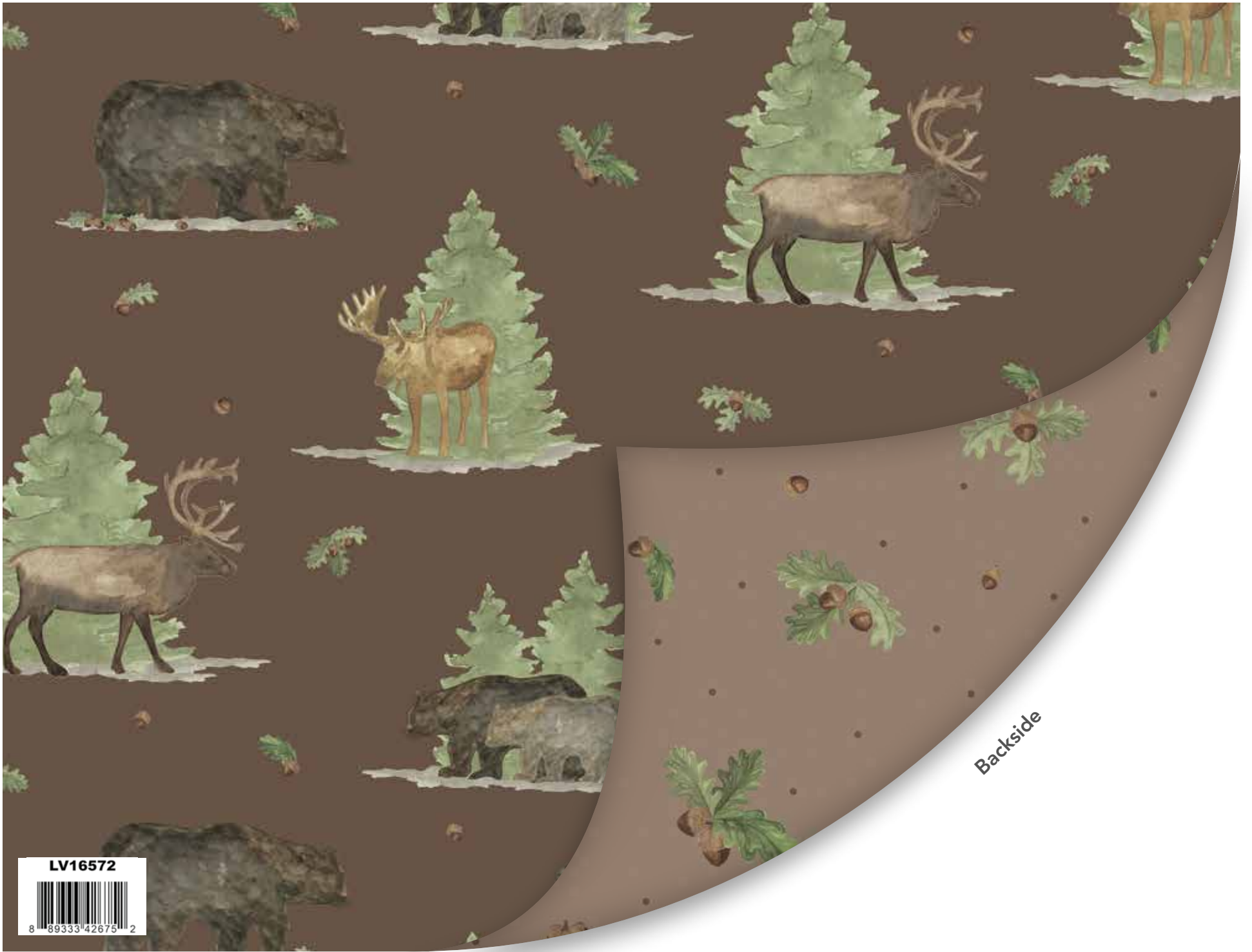


LV16570





Backside



Let's Get Lost in the Woods by Tara Reed



Vintage Charm by Dani Mogstad



LV16574



8 89333 42677 6

Backside

DOUBLE LUSH
VELVET



Floral Charms by Kelsey Carlson

About the Line

Introducing Double Lush Velvet, the luxurious new substrate from Riley Blake Designs. Double Lush Velvet is 58/60" wide of double-sided plushness and is 95% polyester/5% spandex. It's soft, smooth and dreamy to the touch, plus a no fray edge. Double Lush Velvet is perfect for snuggly quilts, pillows, pajamas, and more for gifting or keeping. Get cozy with Double Lush Velvet!

available December 2024

95% POLYESTER/5% SPANDEX · 58/60" WIDE · MADE IN COLOMBIA



9646 South 500 West
Sandy, UT 84070
888.768.8454 · 801.816.0540
www.rileyblakedesigns.com

©2024 Riley Blake Designs & Assorted Designers

Machine Wash Cold
No Chlorine Bleach
Tumble Dry Low
Remove Promptly
Not Intended for Children's Sleepwear

The projects portrayed are virtual images. The look of the projects may differ with actual fabric.

The project virtual(s) shown may be different than the image shown on the pattern cover.

Approximate fabric requirements are listed to aid in estimating the amount of yardage to order and are subject to change.

Backing yardage is shown using the best use of fabric and may not be intended for directional fabric.

DOUBLE LUSH VELVET

Double Lush Velvet is 95% polyester/5% spandex, produced in Colombia

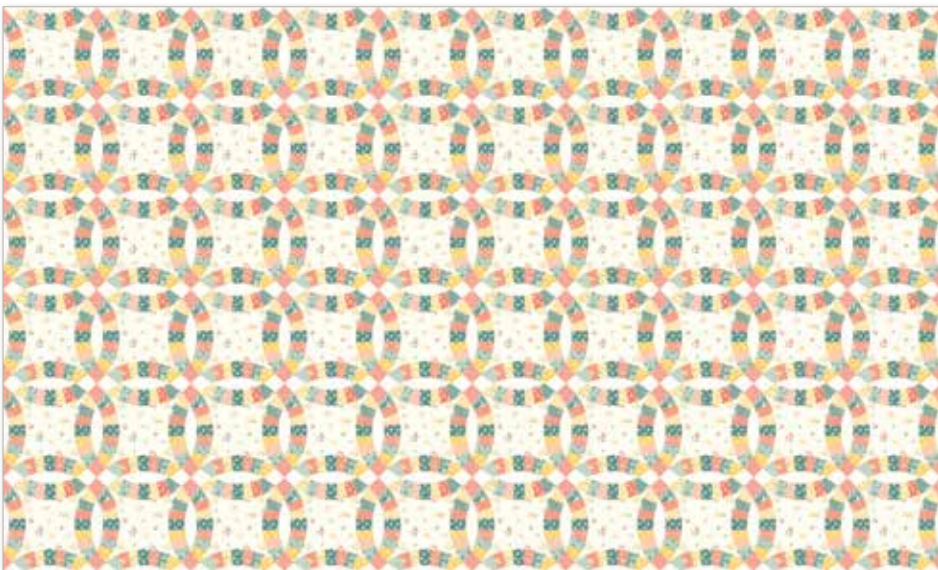
Swatches shown at 58/60" 1-yd repeat



Bee Vintage by Lori Holt of Bee in my Bonnet



Churn Dash by Lori Holt of Bee in my Bonnet



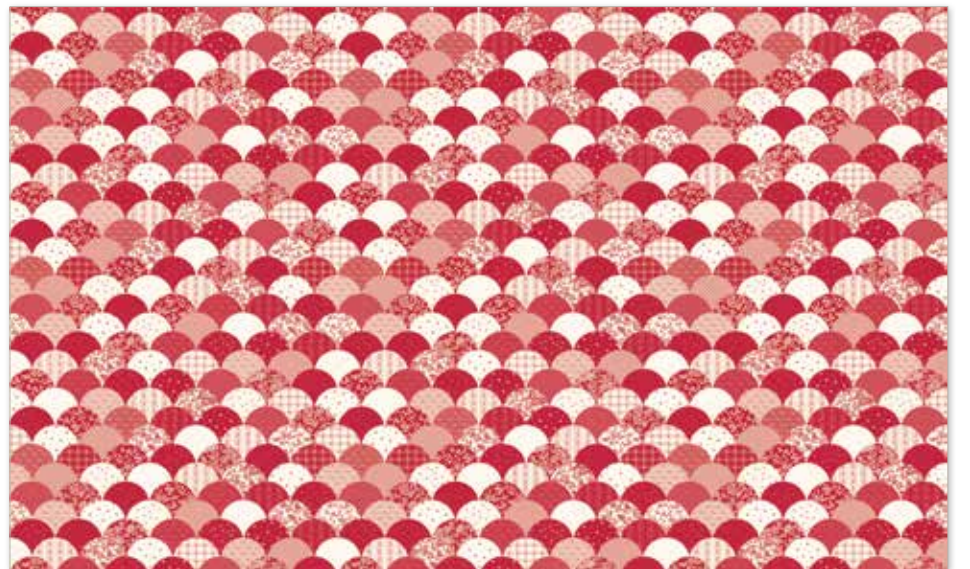
Double Wedding Ring by Sandy Gervais



Prairie Chain by Modern Prairie



BloomBerry Hexies by Minki Kim



Red Delicious Scallops by the RBD Designers



Blue Safari Stargazing by the RBD Designers



Pink Safari Stargazing by the RBD Designers



Twilight Creatures by Natàlia Juan Abelló



Special Delivery by Doodlebug Design Inc.



Bundle of Joy by Doodlebug Design Inc.



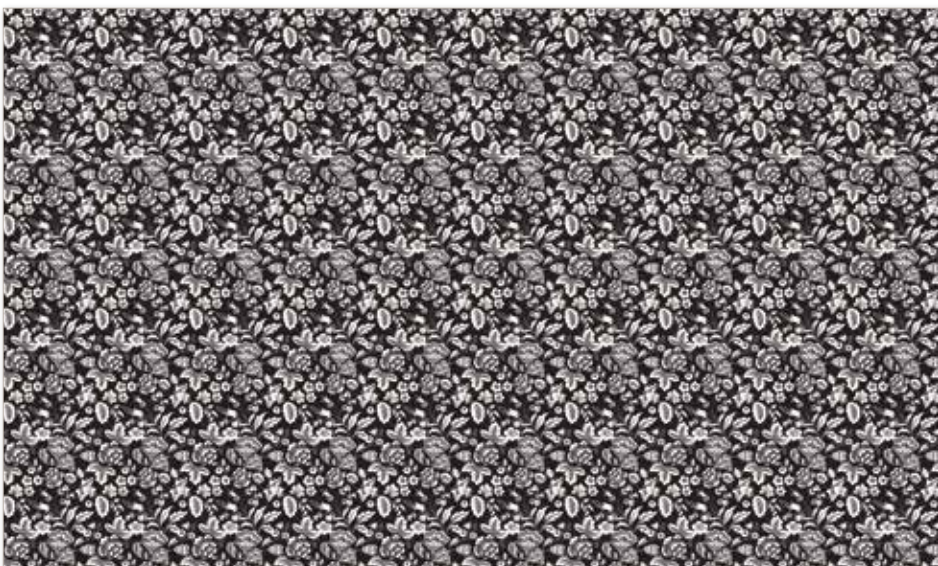
Americana Stars by Lori Holt of Bee in my Bonnet



Let's Get Lost in the Woods by Tara Reed



Vintage Charm by Dani Mogstad



Midnight Meadow by My Mind's Eye



Floral Charm by Kelsey Carlson

available December 2024

95% POLYESTER/5% SPANDEX · 58/60" WIDE · MADE IN COLOMBIA



9646 South 500 West
Sandy, UT 84070
888.768.8454 · 801.816.0540
www.rileyblakedesigns.com

©2024 Riley Blake Designs & Assorted Designers