

INTRODUCES

EDIE JANE

deenarutter

AVAILABLE  
MAY  
2019

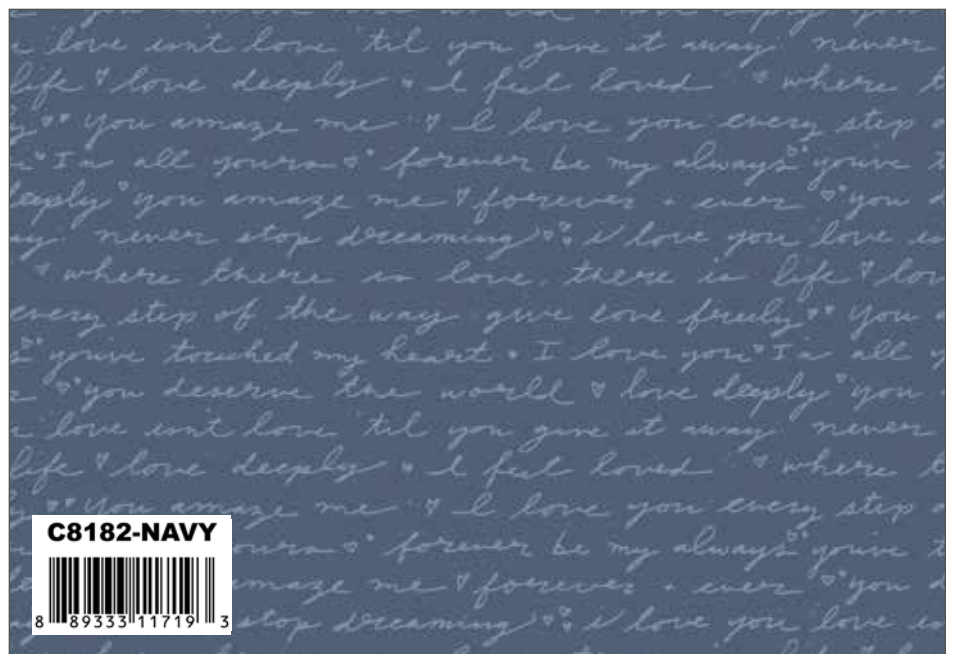




Navy Edie Jane Main



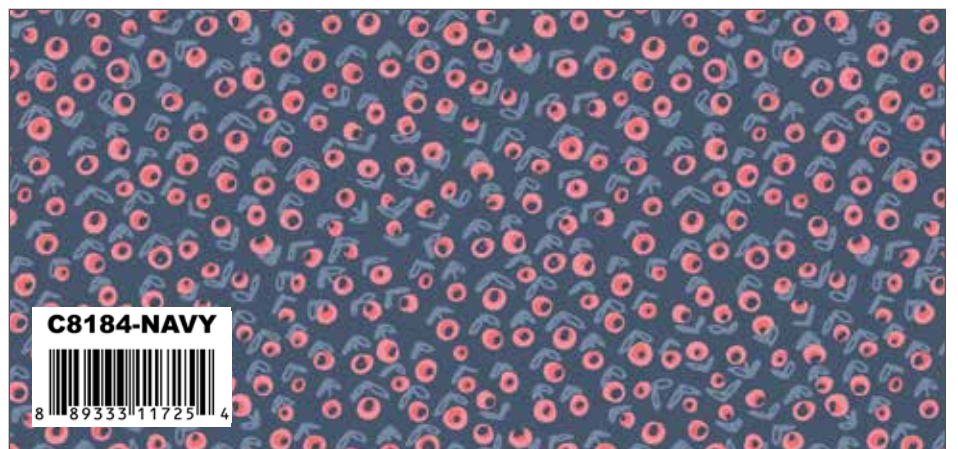
Navy Edie Jane Floral



Navy Edie Jane Love Letter



Pink Edie Jane Triangle



Navy Edie Jane Posey



Navy Edie Jane Dot



Navy Edie Jane Sketch



Tutu Shade



Shell Shade



Riley Teal Solid



Ash Solid

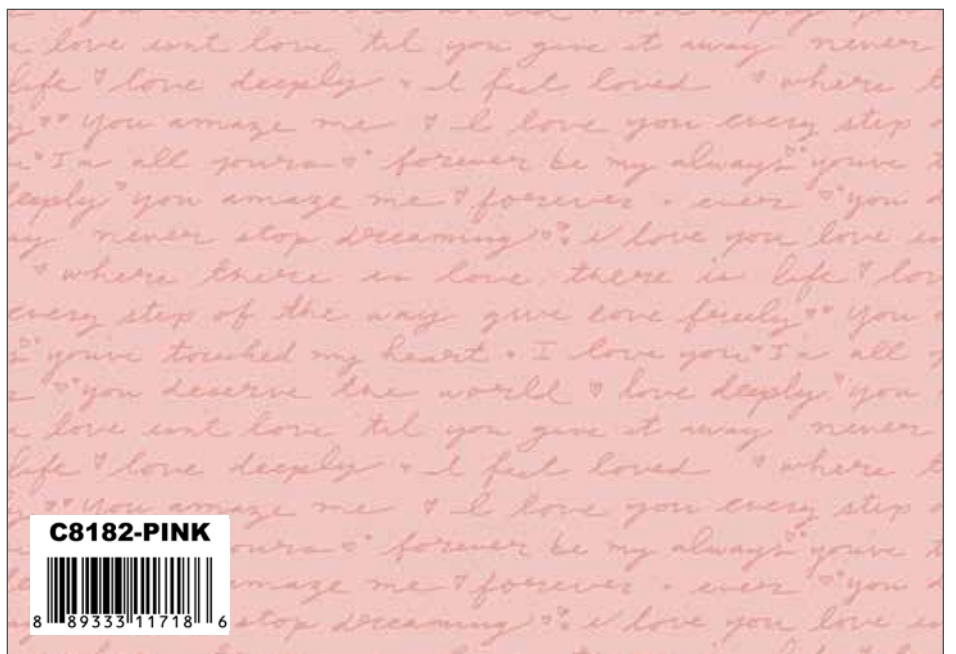




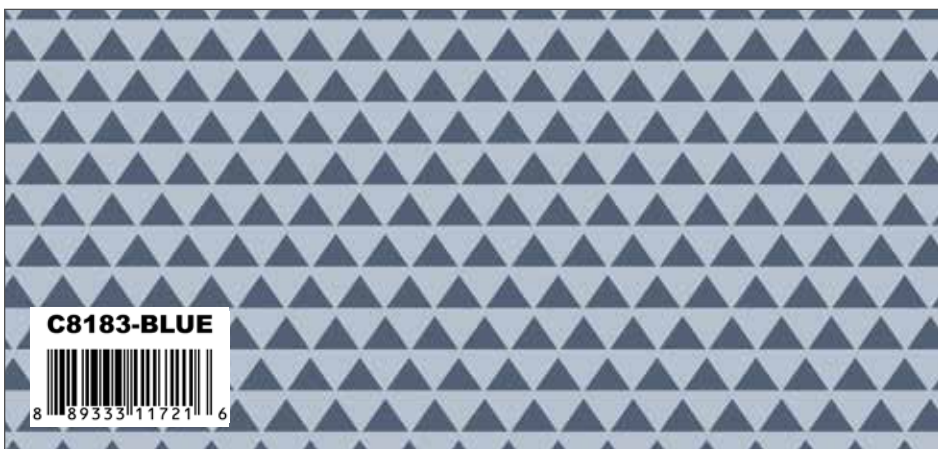
Cream Edie Jane Main



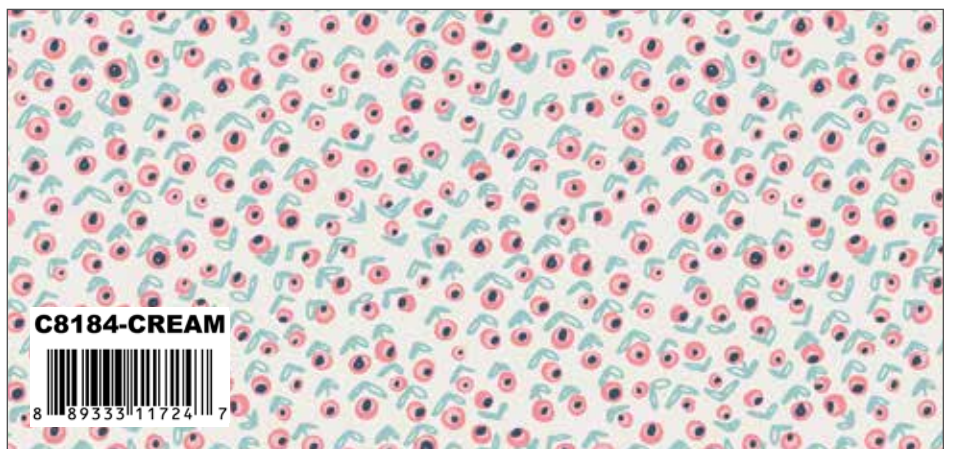
Blue Edie Jane Floral



Pink Edie Jane Love Letter



Blue Edie Jane Triangle



Cream Edie Jane Posey



Cream Edie Jane Dot



Pink Edie Jane Sketch



Riley Baby Pink Solid



Baby Pink Kisses



Peony Solid



Navy Le Crème Swiss Dot

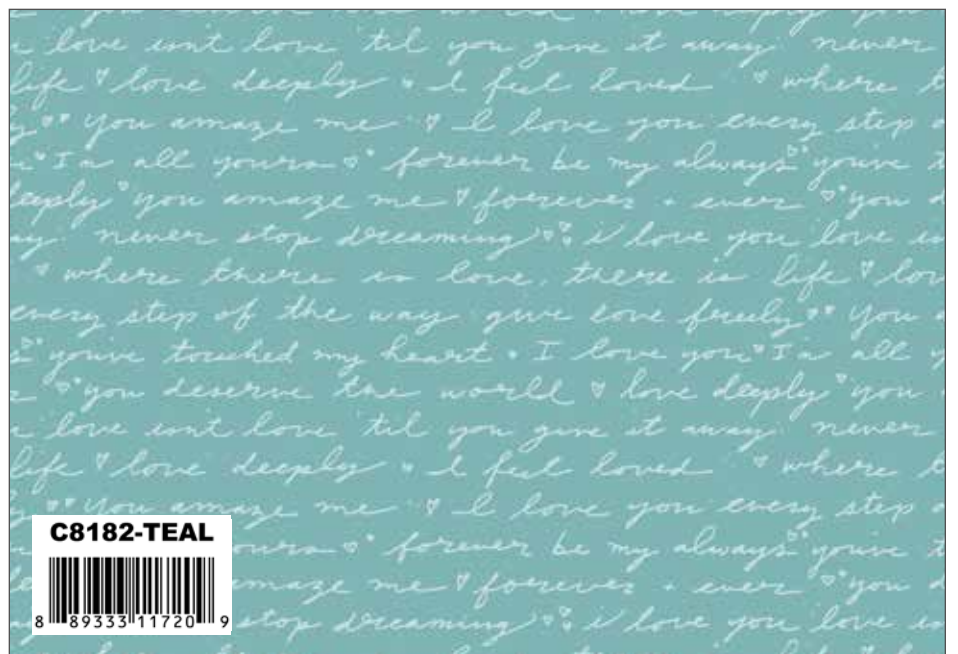




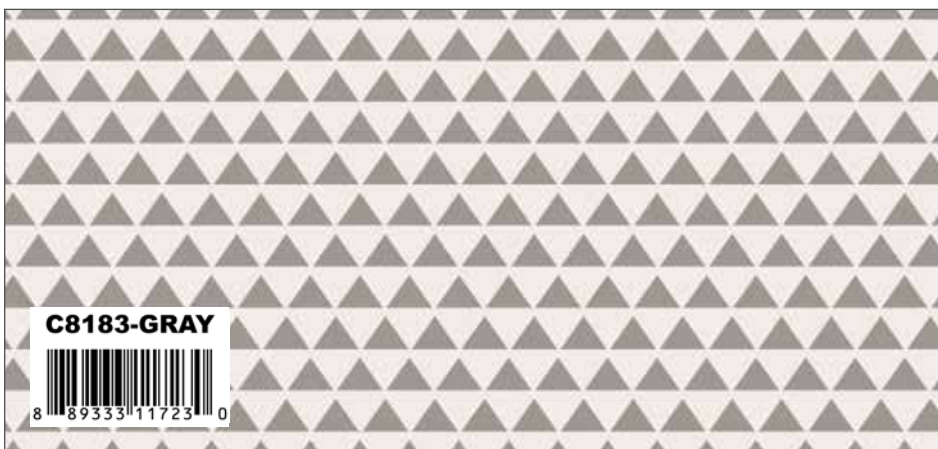
Teal Edie Jane Main



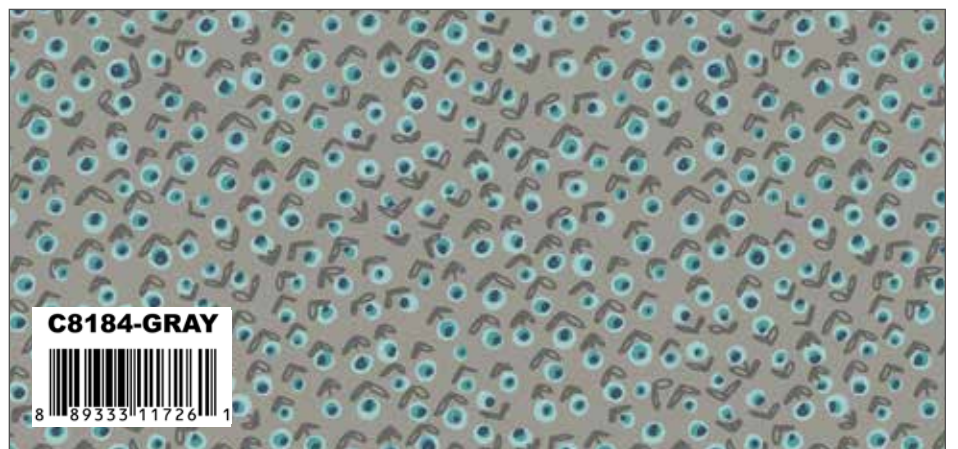
Cream Edie Jane Floral



Teal Edie Jane Love Letter



Gray Edie Jane Triangle



Gray Edie Jane Posey



Teal Edie Jane Dot



Gray Edie Jane Sketch



Apricot Blush Solid



Salmon Solid



Slate Shade



Teal Shade



*Double Crossed by Amy Smart*

Twin Quilt Size 72" x 86"

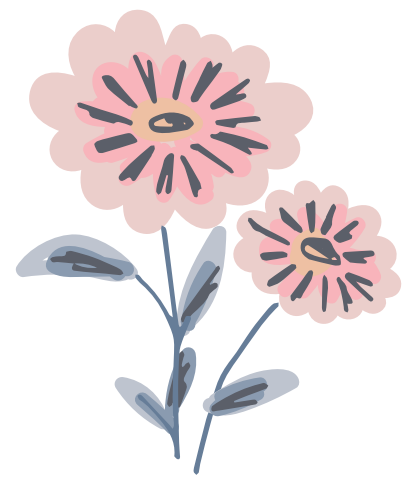
**Fabric Requirements**

FQ-8180-21 Edie Jane Fat Quarter Bundle

1 1/2 Yards C8181 Blue Floral

1 1/8s Yard C8185 Navy Dot (Includes Binding)

1 3/4 Yards C120 Ash Solid



Twin Quilt Size 72" x 86"

**Fabric Requirements**

FQ-8180-21 Edie Jane Fat Quarter Bundle

1 1/2 Yards C8181 Cream Floral

1 1/8 Yard C8185 Teal Dot (Includes Binding)

1 3/4 Yards C120 Ash Solid

Order the Double Crossed  
Quilt Pattern



Mod Geocruiser by Kelli Fannin



Quilt Size 68" x 80"

Fabric Requirements

- |                                 |   |
|---------------------------------|---|
| 1 1/8 Yards C8180 Navy Main     | 1/4 Yard C8184 Cream Posey                    |
| 1/8 Yard C8181 Blue Floral      | 1/8 Yard C8184 Navy Posey                     |
| 1/4 Yard C8181 Cream Floral     | 3 5/8 Yards C8185 Cream Dot                   |
| 5/8 Yard C8181 Navy Floral      | 1/8 Yard C8185 Teal Dot                       |
| 3/8 Yard C8182 Teal Love Letter | 1 1/2 Yards C8185 Navy Dot (Includes Binding) |
| 1/8 Yard 8183 Blue Triangle     | 1/4 Yard C8186 Pink Sketch                    |
|                                 | 1/8 Yard C8186 Navy Sketch                    |



Order the  
P076-Mod Geocruiser  
Quilt Pattern

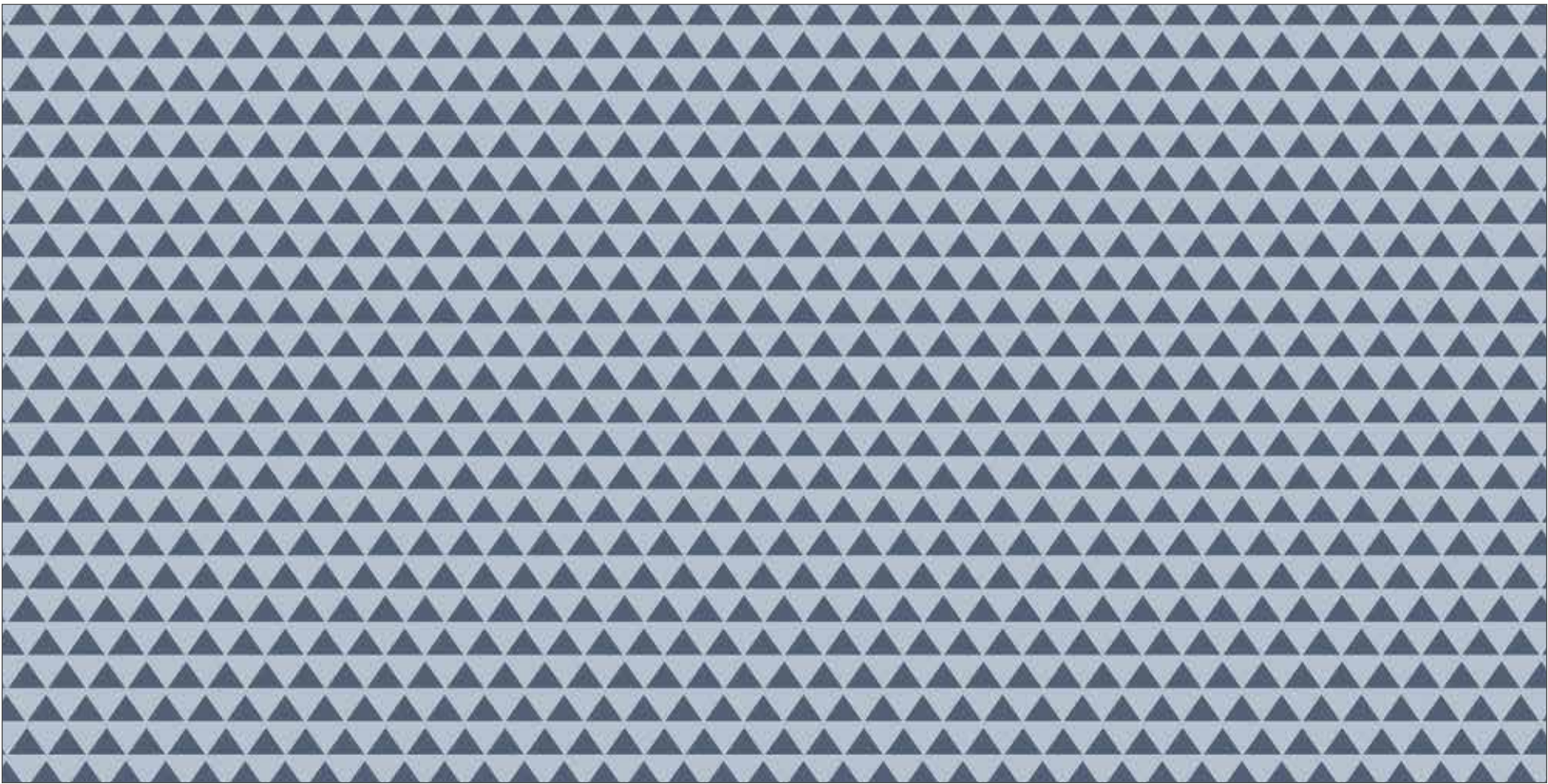




C8181 Blue Edie Jane Floral

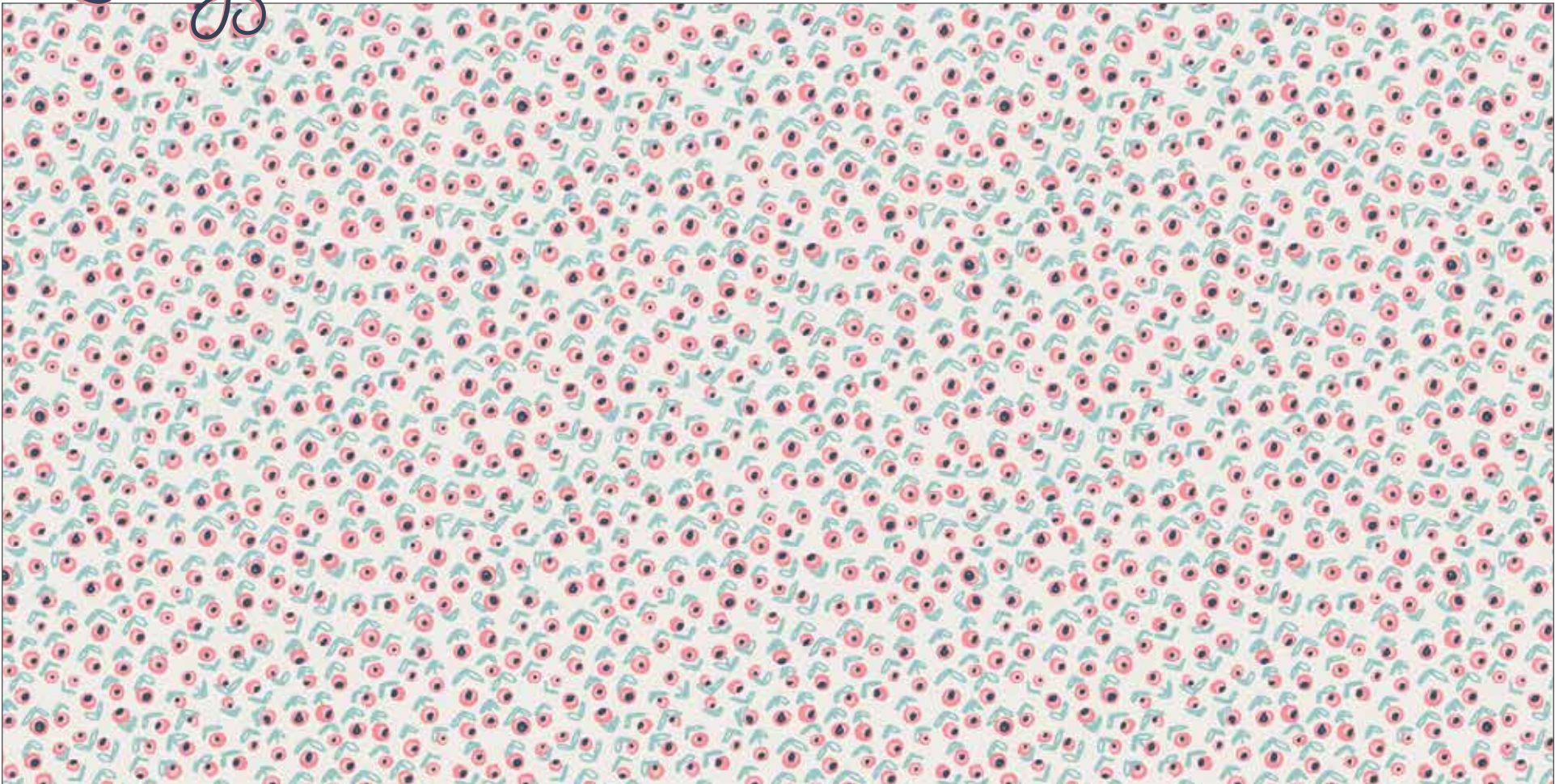


C8182 Pink Edie Jane Love Letter

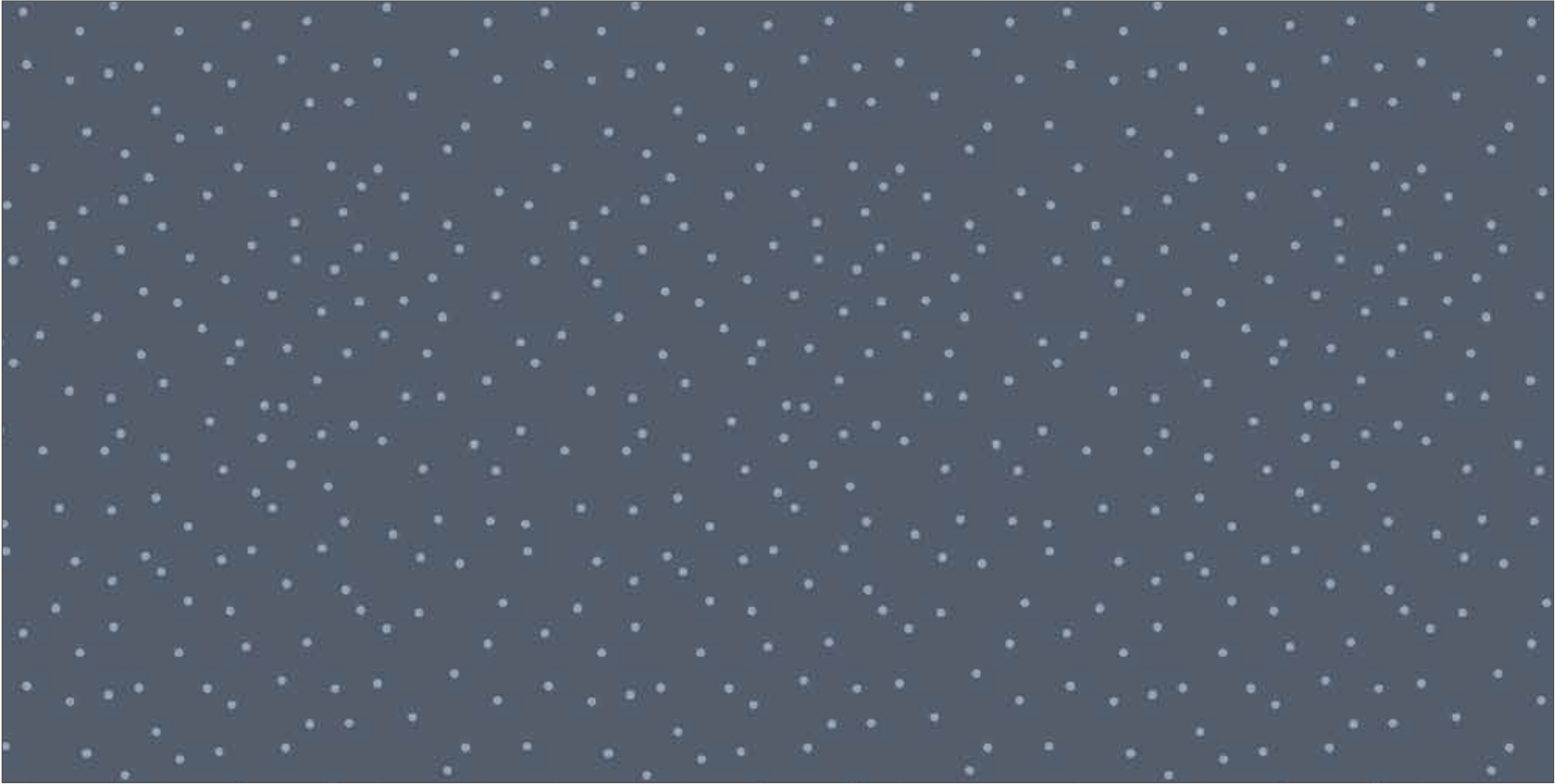


C8183 Navy Edie Jane Triangle





C8184 Cream Edie Jane Posey



C8185 Navy Edie Jane Dot



C8186 Navy Edie Jane Sketch





C8180 Navy Edie Jane Main

Shown as Repeat 44" x 36"

C: COTTON



## About the Line



Cornflower, sage, eggshell and blush are just some of the gorgeous colors you'll see in bloom for the Edie Jane collection from Deena Rutter.

A love letter print with uplifting phrases like "Never stop dreaming" and "You've touched my heart" complement the delightful dots, posey and triangle prints. And they all blend beautifully with the main floral print inspired by garden flowers.

This collection is sure to plant ideas for quilting, sewing and creating projects that will be perennial favorites.



5-Inch Stacker  
42 Pieces



**5-8180-42**



10-Inch Stacker  
42 Pieces



**10-8180-42**



Rolie Polie  
40 Pieces



**RP-8180-40**



Fat Quarter  
21 Pieces



**FQ-8180-21**



## PRE-ORDER ONLY

ADD ANY LAMINATE WITH 100 YARDS MINIMUM

10-Yard Case Pack

**CP10-8180-21**



15-Yard Case Pack

**CP15-8180-21**



AVAILABLE MAY 2019

100% FINE COTTON 43/44" WIDE • MACHINE WASH COLD • NO CHLORINE BLEACH • TUMBLE DRY LOW • REMOVE PROMPTLY

Riley Blake Designs • 9646 South 500 West, Sandy, Utah 84070

Toll Free 1.888.768.8454 • Tel 801.816.0540 • Fax 801.816.0542

[www.rileyblakedesigns.com](http://www.rileyblakedesigns.com)

Not intended for children's sleepwear

©2019 Riley Blake Designs and Deena Rutter

MADE IN KOREA