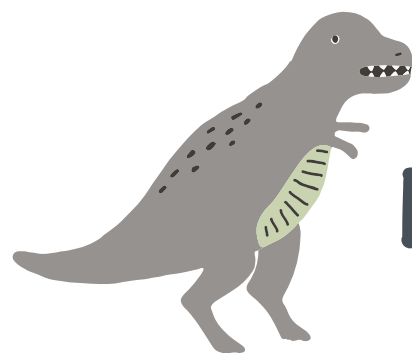
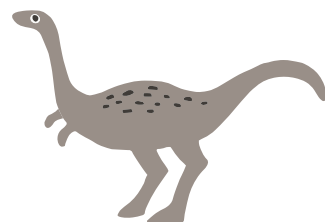


INTRODUCES



# FOSSIL RIM

deenarutter



You'll Love the  
Patterns Inside!





Blue Fossil Main



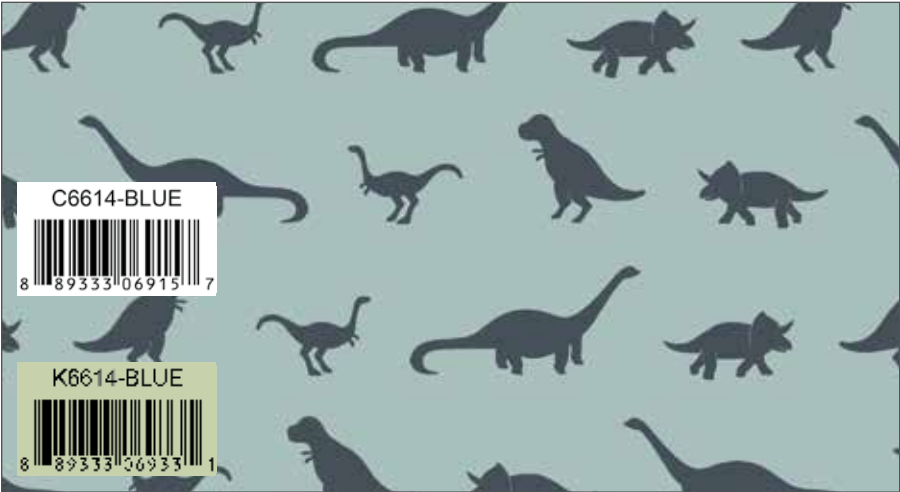
Blue Fossil Words



Navy Fossil Hexagon



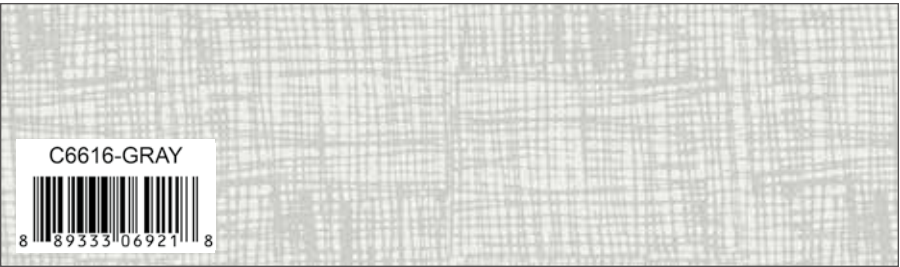
Navy Fossil Terrain



Blue Fossil Tiny Dino



Gray Fossil Footprint



Gray Fossil Scratch



Cloud Solid



Grass Solid



Teal Shade



Overcast Shade





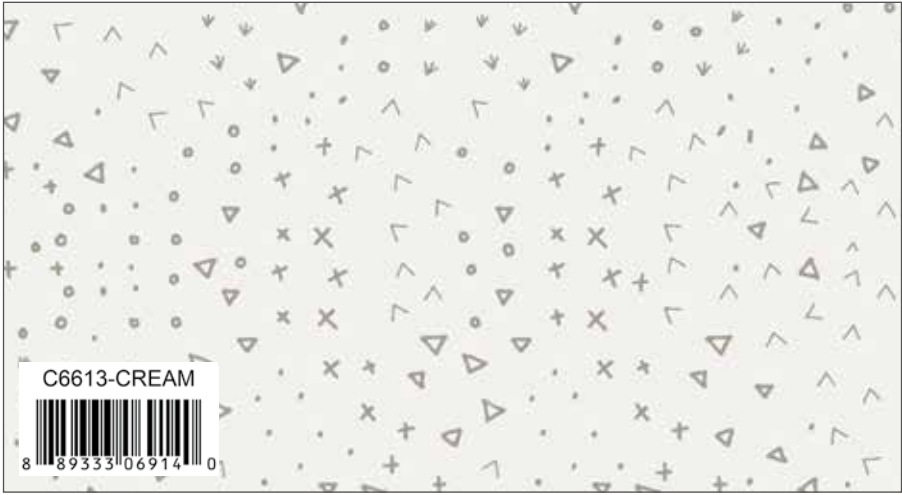
Navy Fossil Main



Navy Fossil Words



Cream Fossil Hexagon



Cream Fossil Terrain



Yellow Fossil Tiny Dino



Navy Fossil Footprint



Yellow Fossil Scratch



Riley Gray Solid



Cadet Solid



Robin Shade



Sky Solid





©2017 RILEY BLAKE DESIGNS AND DEENA RUTTER

ALL PRINTS AVAILABLE IN 100% FINE COTTON & 2 KNITS



## Cream Fossil Main



## Cream Fossil Words



Blue Fossil Hexagon



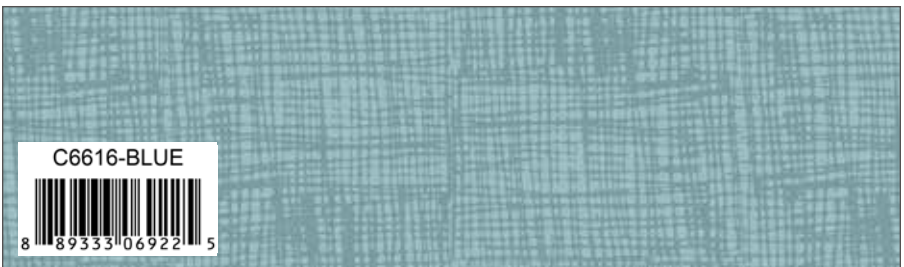
## Yellow Fossil Terrain



### Cream Fossil Tiny Dino



## Blue Fossil Footprint



## Blue Fossil Scratch



### Linen Shade



Pewter Solid



## Riley Mustard Solid



Riley Teal Solid

C: COTTON, K: KNIT





Downtown V-Neck



8 5 2 6 6 4 0 9 4 8 5 3



Inside Out Pockets



8 5 2 6 6 8 3 8 6 8 2 4



Pack Pack



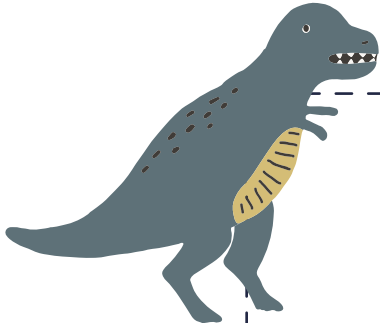
7 1 3 7 5 7 9 5 6 8 1 9



“Squared Away” by Deena Rutter



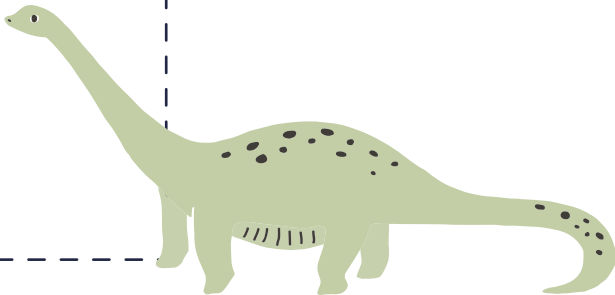
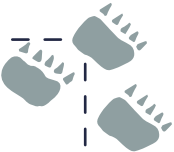
Quilt Size 56" x 60"



Fabric Requirements

- 1/3 Yard C6610 Cream Main
- 1/4 Yard C6610 Navy Main
- 1/3 Yard C6611 Navy Words
- 1/4 Yard C6612 Navy Hexagon
- 1/4 Yard C6612 Cream Hexagon
- 1/4 Yard C6613 Cream Terrain
- 1/3 Yard C6613 Yellow Terrain
- 1/8 Yard C6614 Cream Tiny Dino
- 1/8 Yard C6614 Blue Tiny Dino
- 1/4 Yard C6614 Yellow Tiny Dino
- 1/4 Yard C6615 Gray Footprints
- 1/4 Yard C6615 Navy Footprints
- 2 1/8 Yards C6616 Blue Scratch

Binding: 2/3 Yard  
Backing: 4 Yards



Pre-order the Squared Away  
Quilt Pattern







C6610 Blue Fossil Main

Shown as Repeat 44" x 36"  
C: COTTON





©2017 RILEY BLAKE DESIGNS AND DEENA RUTTER

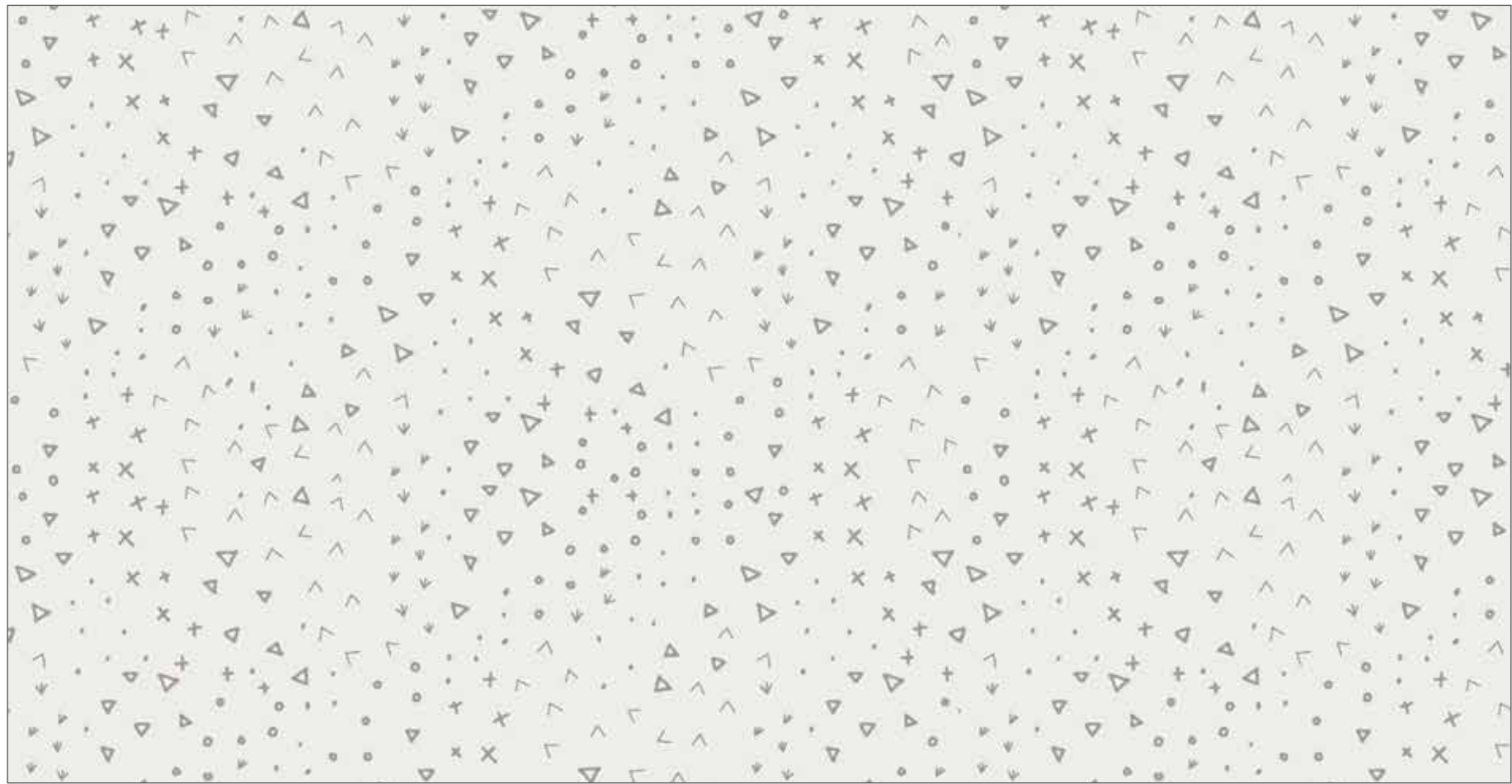
ALL PRINTS AVAILABLE IN 100% FINE COTTON & 2 KNITS



**C6611 K6611** Blue Fossil Words



## C6612 Navy Fossil Hexagon



### C6613 Cream Fossil Terrain

C: COTTON, K: KNIT

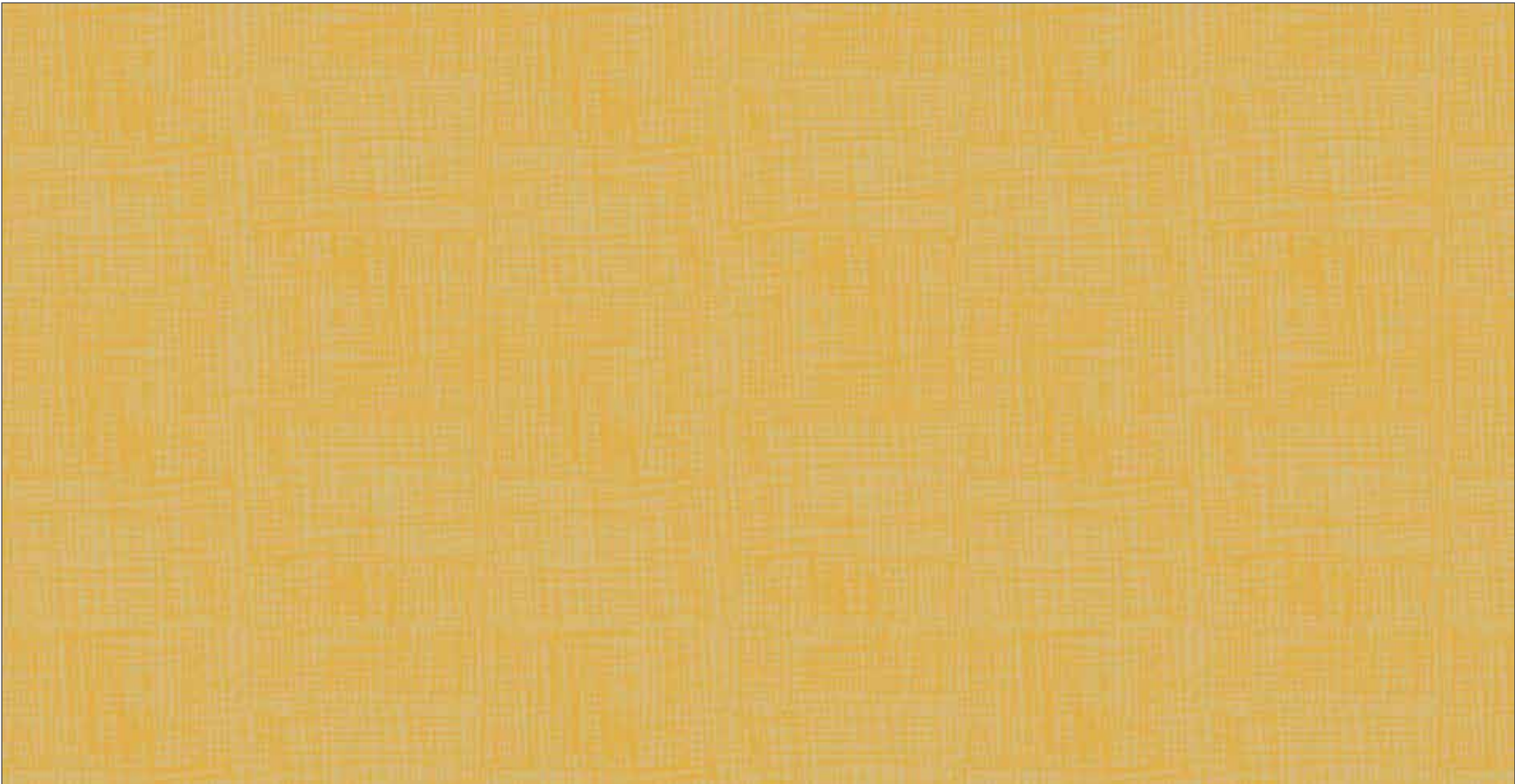




**C6614** **K6614** Cream Fossil Tiny Dino



**C6615** Gray Fossil Footprint



**C6616** Yellow Fossil Scratch



## About the Artist



Since I was a young girl, I have always needed a creative outlet to express myself. Whether it is through painting, playing the piano and guitar, decorating my home, or graphic designing, artistic expression brings me much fulfillment. I have been designing for the craft industry since 1999. Much of my inspiration comes from nature, music, and architecture. I also come from a long line of quilters. My grandmother and mother sew countless quilts and receiving blankets each year. I am happy to be making my contribution to the fabric world with my own fabric designs. Fabric is such a versatile medium with the possibilities seeming endless.

I currently live on an amazing little circle in Salt Lake City, Utah. When I am not designing, I love being out with my family and friends. Some of my other interests include exercising outdoors, playing the piano and guitar, and I love all sorts of music genres. I have some sort of affinity to the singer songwriters of the 70s... maybe because it is the decade of my birth. Music is a big part of my inspiration. A big perk to my job includes getting to listen to my own musical selections while I design.

I have always hoped my designs will inspire creativity in others. I believe we all have a creative spark within us, waiting to be displayed. Sometimes we design fabric, sometimes we sew a quilt that we share with someone, sometimes we need to be creative in our friendships or child rearing. If we all share our unique creativity with one another, what a great inspiring world we would live in.

deena rutter

5-Inch Stacker  
42 Pieces



5-6610-42



10-Inch Stacker  
42 Pieces



10-6610-42



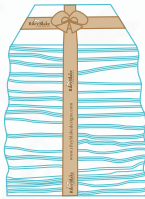
Rolie Polie  
40 Pieces



RP-6610-40



Fat Quarter



FQ-6610-21



## PRE-ORDER ONLY

Add any laminate with 100 yards minimum

10-Yard Case Pack

CP10-6610-21



15-Yard Case Pack

CP15-6610-21



AVAILABLE AUGUST 2017

100% FINE COTTON 43/44" WIDE • KNIT 95% COTTON / 5% SPANDEX 57/58"

MACHINE WASH COLD • NO CHLORINE BLEACH • TUMBLE DRY LOW • REMOVE PROMPTLY

Riley Blake Designs • 9646 South 500 West, Sandy, Utah 84070

Toll Free 1.888.768.8454 • Tel 801.816.0540 • Fax 801.816.0542

www.rileyblakedesigns.com • www.sewtogether.com

Not intended for children's sleepwear

©2017 Riley Blake Designs and Deena Rutter

MADE IN KOREA