
Riley Blake
DESIGNS

INTRODUCES



FOSSIL RIM 2

deena rutter
.....



AVAILABLE
OCTOBER
2019 - R2



Navy Fossil Rim 2 Main



Navy Fossil Rim 2 Words



Cream Fossil Rim 2 Tiny Dino



Blue Fossil Rim 2 Scratch



Navy Fossil Rim 2 Terrain



Navy Fossil Rim 2 Fossil



Teal Shade



Outrageous Orange Kaleidoscope



Cadet Solid



Gray Large Hashtag



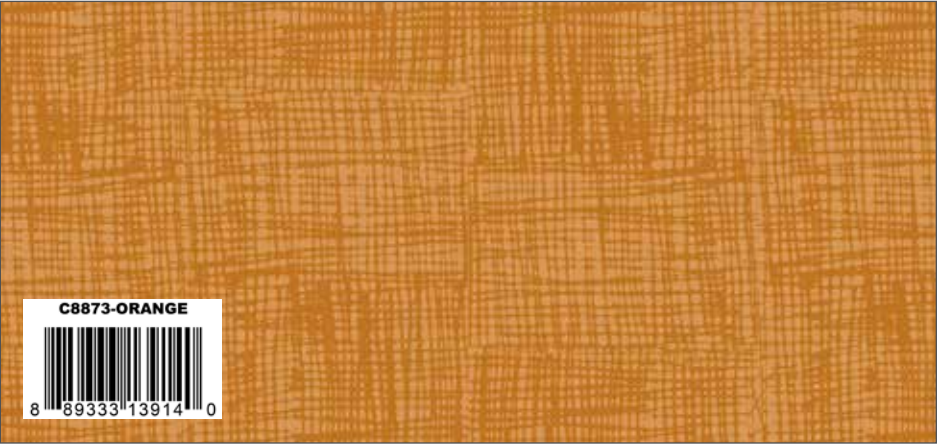
Cream Fossil Rim 2 Main



Cream Fossil Rim 2 Words



Orange Fossil Rim 2 Tiny Dino



Orange Fossil Rim 2 Scratch



Yellow Fossil Rim 2 Terrain



Yellow Fossil Rim 2 Fossil



Bear Lake Solid



Steel Mini Hashtag



Navy Le Crème Swiss Dot



Pumpkin Shabby



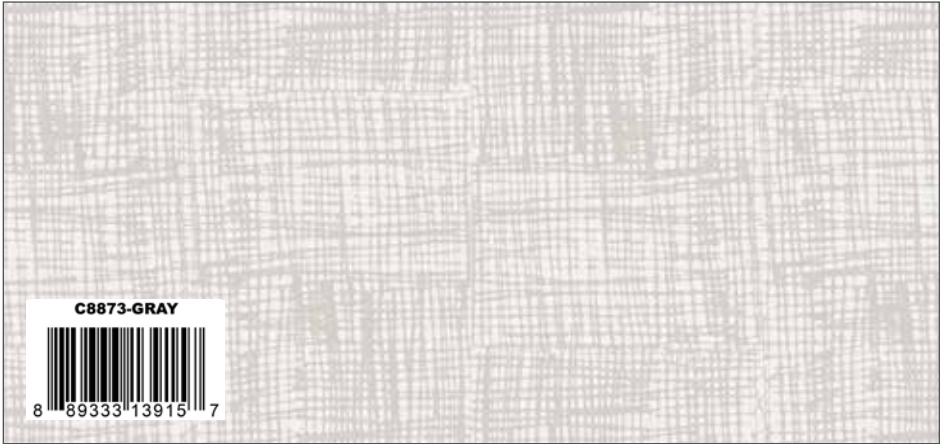
Light Blue Fossil Rim 2 Main



Light Blue Fossil Rim 2 Words



Blue Fossil Rim 2 Tiny Dino



Gray Fossil Rim 2 Scratch



Cream Fossil Rim 2 Terrain



Blue Fossil Rim 2 Fossil



Gray Triangles



Bleached Denim Solid



Teal Swiss Dot



Slate Shade

Fossil Rim 2 Pillow Panels



Green Fossil Rim 2 PillowPanel

Scaled to 23% | Actual Size is 43 1/2" x 24"

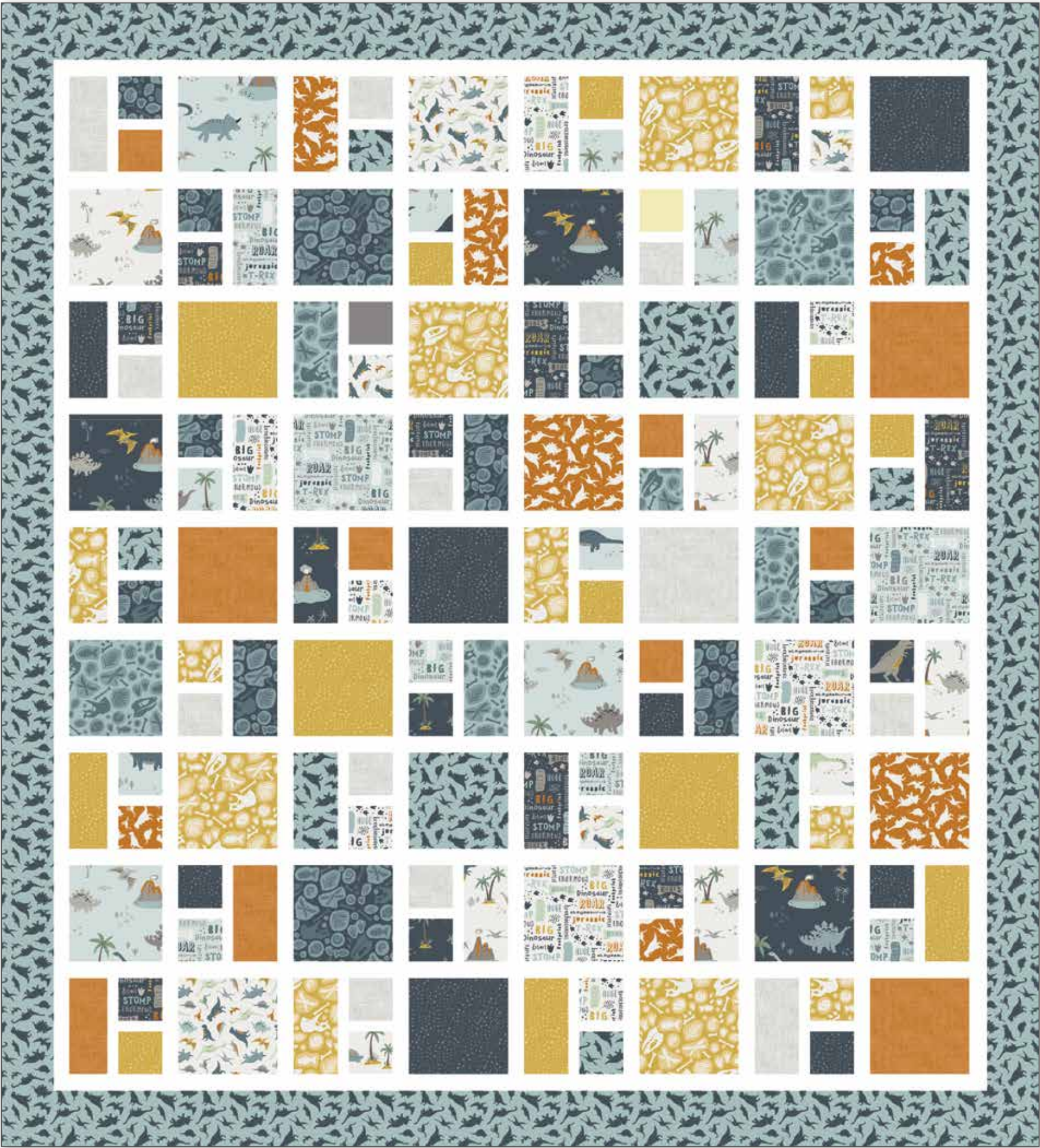


Blue Fossil Rim 2 Pillow Panel

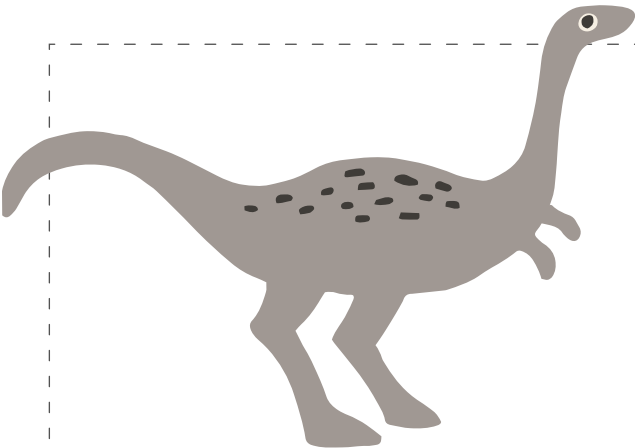
Scaled to 23% | Actual Size is 43 1/2" x 24"



Charming Charlie by Primrose Cottage Quilts

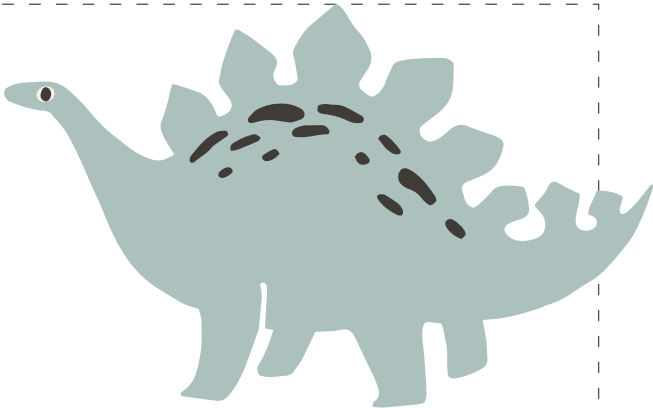


Throw Size 56" x 61 1/2"



Fabric Requirements

- 2 5-8870-42 Fossil Rim 2 5-Inch Stackers
- 1 1/2 Yards C8872 Blue Tiny Dino
- 2 Yards C120 Riley White Solid
- 1/2 Yard Binding



Pre-order the Charming Charlie
Quilt Pattern
(Two Size Options)



C8870 Navy Fossil Rim 2 Main

Shown as Repeat 44" x 36"

C: COTTON



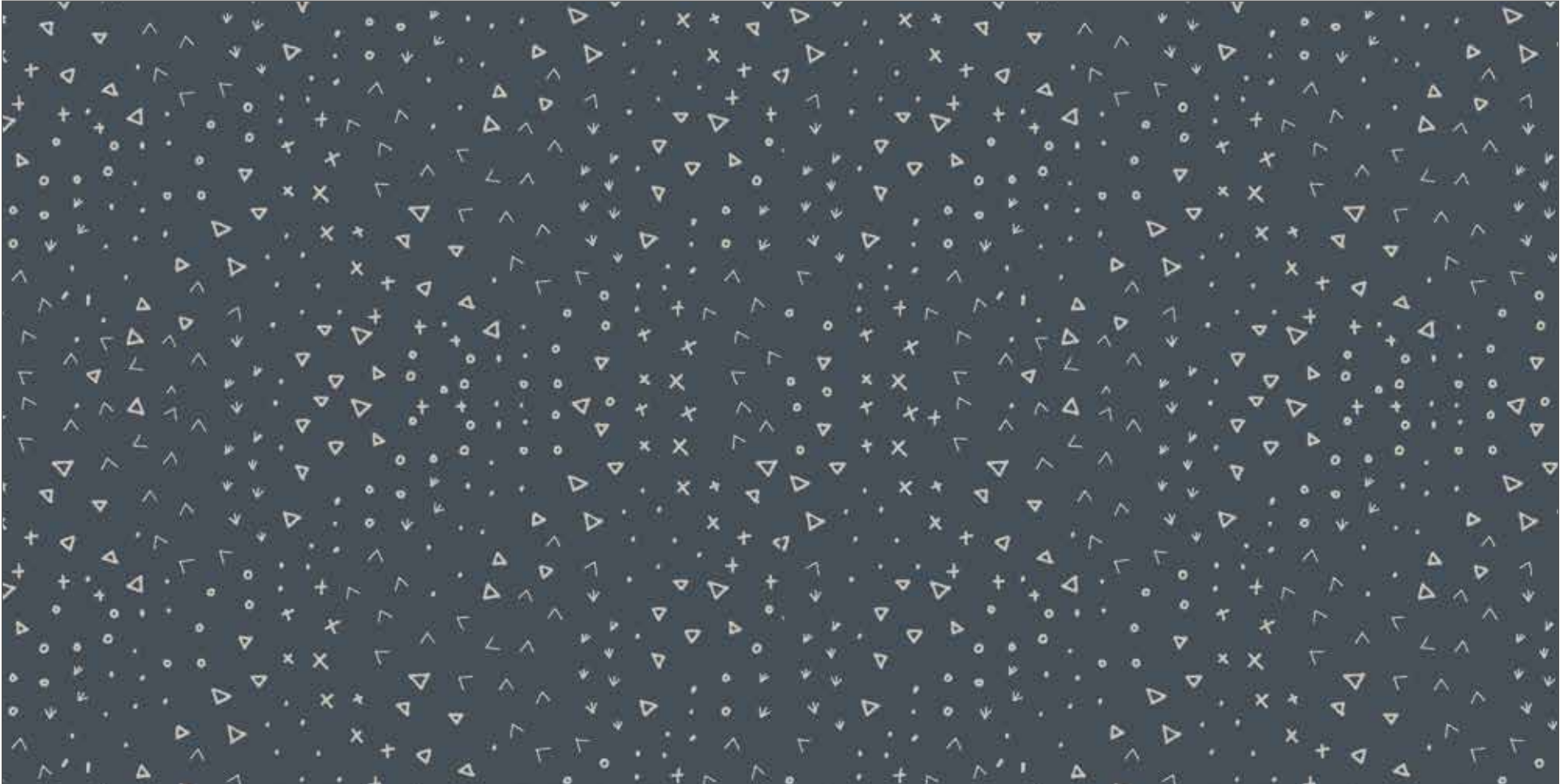
C8871 Light Blue Fossil Rim 2 Words



C8872 Cream Fossil Rim 2 Tiny Dino



C8873 Orange Fossil Rim 2 Scratch



C8874 Navy Fossil Rim 2 Terrain

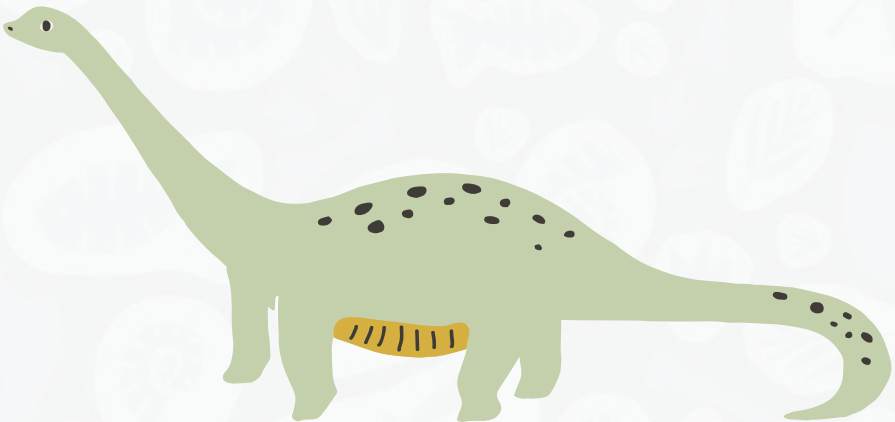


C8875 Blue Fossil Rim 2 Fossil

About the Line



I love the challenge of creating a great kid line. Especially when it's the sequel! Everyone loved Fossil Rim the first go around, so I wanted to make sure it had the same prehistoric charm as before, but with a new flare. I've added a few volcanoes, lots of extra fossils. Mixed with my dinos from the past and the same color palette, this collection's one of my favorites!



5-Inch Stacker
42 Pieces



5-8870-42



10-Inch Stacker
42 Pieces



10-8870-42



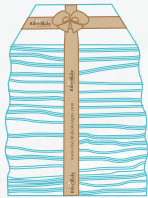
Rolie Polie
40 Pieces



RP-8870-40



Fat Quarter



FQ-8870-18



PRE-ORDER ONLY

ADD ANY LAMINATE WITH 100 YARDS MINIMUM

10-Yard Case Pack

CP10-8870-20



15-Yard Case Pack

CP15-8870-20



AVAILABLE OCTOBER 2019

100% FINE COTTON 43/44" WIDE • MACHINE WASH COLD • NO CHLORINE BLEACH • TUMBLE DRY LOW • REMOVE PROMPTLY

Riley Blake Designs • 9646 South 500 West, Sandy, Utah 84070

Toll Free 1.888.768.8454 • Tel 801.816.0540 • Fax 801.816.0542

www.rileyblakedesigns.com

Not intended for children's sleepwear

©2019 Riley Blake Designs and Deena Rutter

MADE IN KOREA