



FRAGRANT *Fields*

by Lila Tueller



available August 2024 | R-1
last call March 1, 2024



C15220-MAROON



Maroon Main



C15221-MAROON



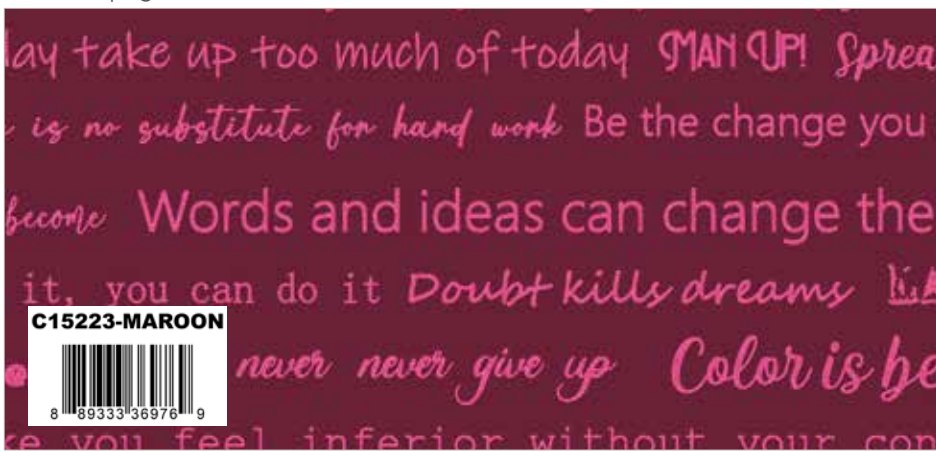
Maroon Sprigs



C15222-HOTPINK



Hot Pink Dancing Daisies



C15223-MAROON



Maroon Script



C15224-MAROON



Maroon Leaves



C15225-BLUSH



Blush Flowers



C15226-HOTPINK



Hot Pink Stony Path



coordinating basics

C780-WINE



Wine Grasscloth Cotton



C120-RILEYBURGUNDY



Riley Burgundy Confetti Cotton



C605-PEONY



Peony Shabby



C665-FROSTING



Frosting Dainty Daisy



C15220-MINT



Mint Main



C15221-DKFOREST



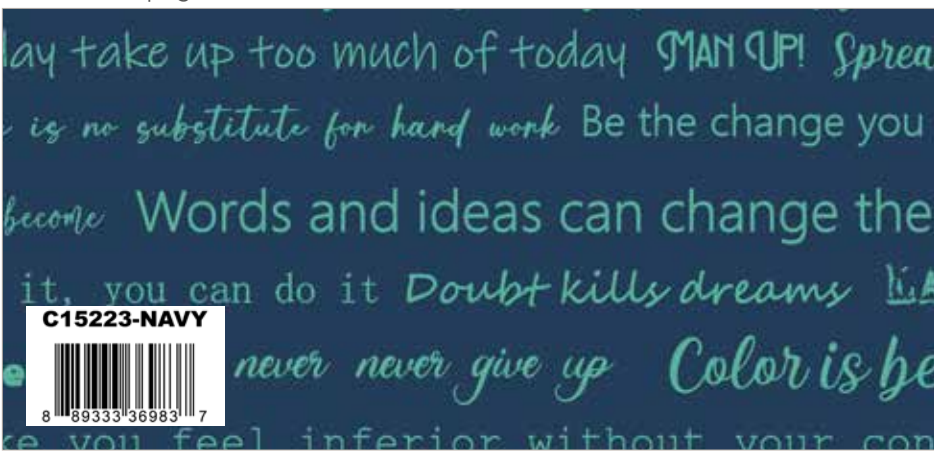
Dark Forest Sprigs



C15222-DKFOREST



Dark Forest Dancing Daisies



C15223-NAVY



Navy Script



C15224-DKFOREST



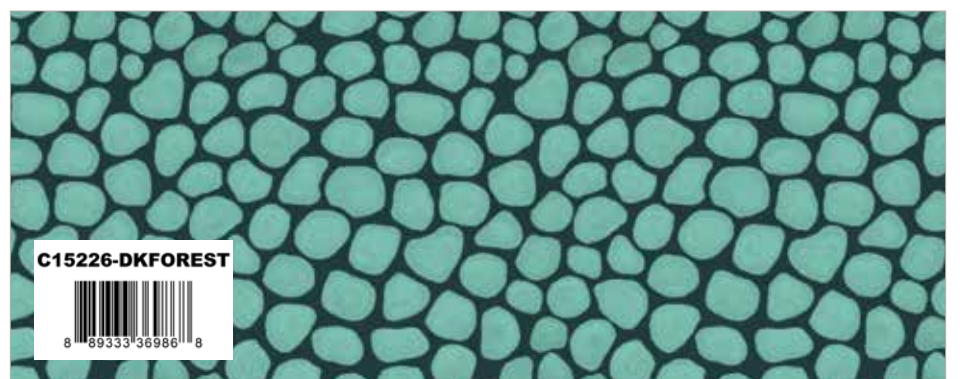
Dark Forest Leaves



C15225-AQUA



Aqua Flowers



C15226-DKFOREST



Dark Forest Stony Path



C665-SONGBIRD



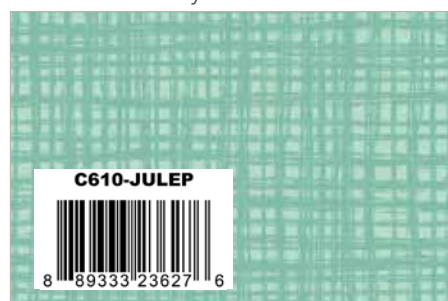
Songbird Dainty Daisy



C780-DARKTEAL



Dark Teal Grasscloth Cotton



C610-JULEP



Julep Texture



C120-MISTY



Misty Confetti Cotton



C15220-EGGPLANT



Eggplant Main



C15221-EGGPLANT



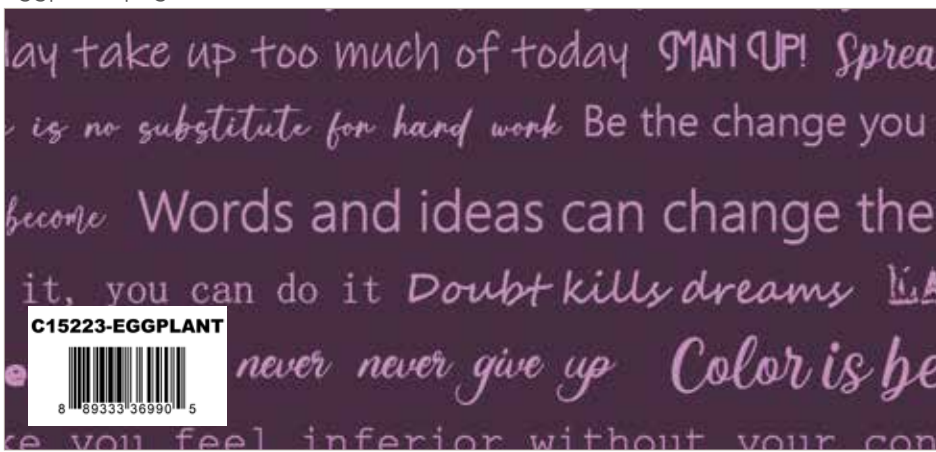
Eggplant Sprigs



C15222-EGGPLANT



Eggplant Dancing Daisies



C15223-EGGPLANT



Eggplant Script



C15224-EGGPLANT



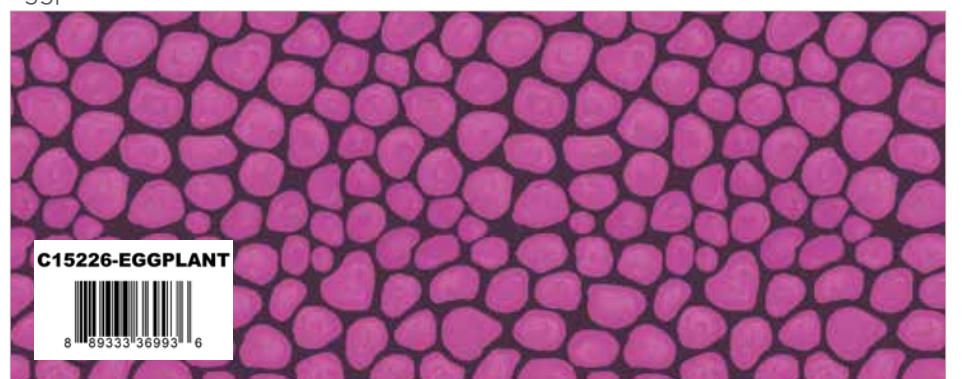
Eggplant Leaves



C15225-LILAC



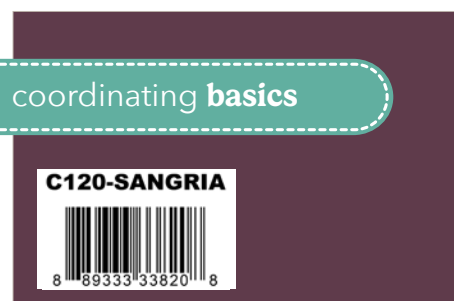
Lilac Flowers



C15226-EGGPLANT



Eggplant Stony Path



C120-SANGRIA



Sangria Confetti Cotton



C780-PLUM



Plum Grasscloth Cotton



C675-EGGPLANT



Eggplant Floret



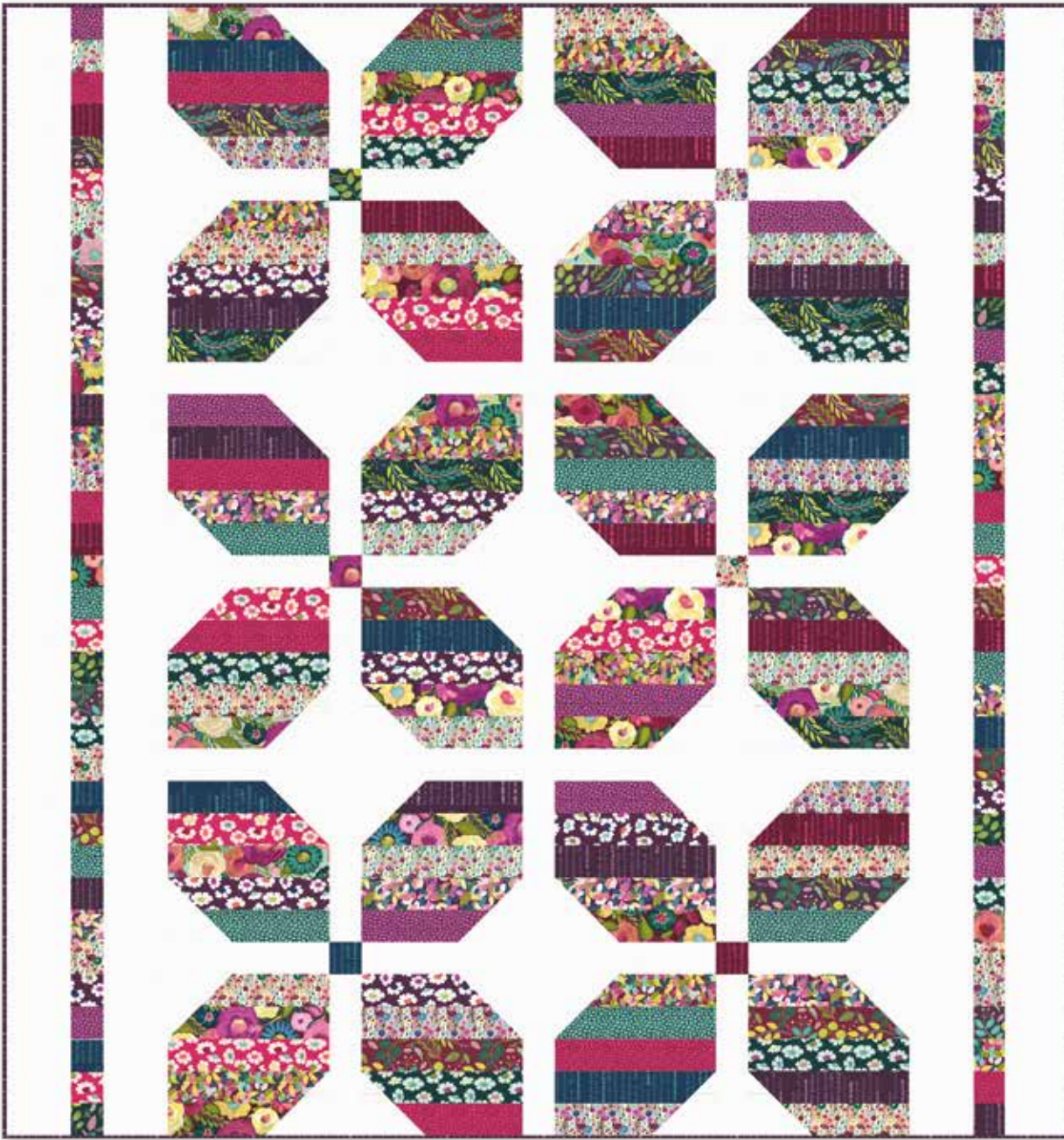
C675-ORCHID



Orchid Floret

coordinating basics

Rolie Flower by The RBD Designers



Quilt Size 66" x 70"

estimated requirements

(1) RP-15220-40 Rolie Polie

Additional Fabrics

2 1/2 Yards C675-WHITE Floret (Background)

1/2 Yard C15223-EGGPLANT Script (Binding)

2 1/8 Yards WB200-SNOW Shade (Backing)



FREE PATTERN
AVAILABLE ON OUR WEBSITE
AUGUST 2024

www.rileyblakedesigns.com

Lollies by Wendy Sheppard



Quilt Size 84" x 80"

estimated requirements

1/4 Yard of Each

C15223-MAROON Script

C15525-BLUSH Flowers

C15226-DKFOREST Stony Path

C15226-EGGPLANT Stony Path

C15226-HOTPINK Stony Path

3/4 Yard of Each

C15220-MAROON Main

C15220-MINT Main

C15221-MAROON Sprigs

C15223-NAVY Script

C15525-LILAC Flowers

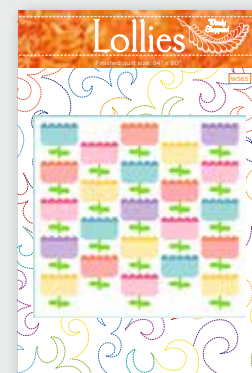
Additional Fabrics

5/8 Yard C15221-DKFOREST Sprigs

4 Yards C610-SWEETMINT Texture (Background)

3/4 Yard C15222-EGGPLANT Dancing Daisies (Binding)

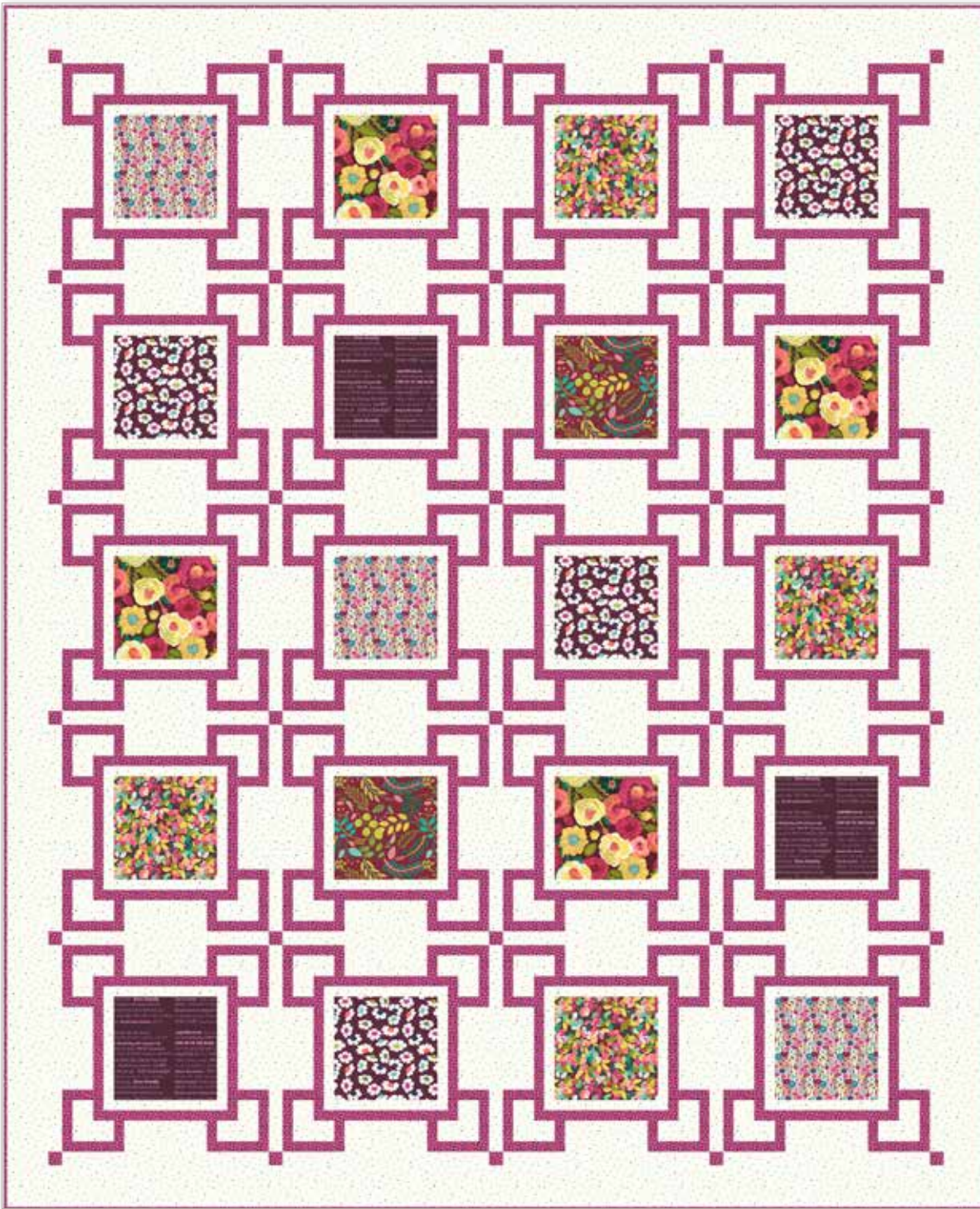
2 1/2 Yards WB200-CARNATION Shade (Backing)



Pre-order the
P180-LOLLIES
Quilt Pattern



Squares Surrounding Squares by Wendy Sheppard



Quilt Size 71" x 87"

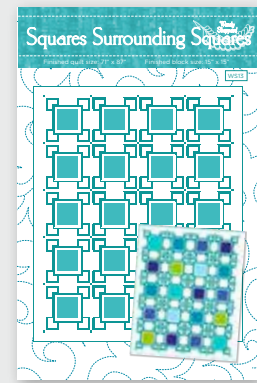
estimated requirements

Fat 1/4 of Each

- C15220-MAROON Main
- C15221-MAROON Sprigs
- C15222-EGGPLANT Dancing Daisies
- C15223-EGGPLANT Script
- C15224-MAROON Leaves
- C15225-LILAC Flowers

Additional Fabrics

- 4 1/8 Yards C645-BLACK Dapple Dot (Background)
- 2 7/8 Yards C15226-EGGPLANT Stony Path
(Includes Binding)
- 2 1/4 Yards WB640-FROSTING Dapple Dot (Backing)



Pre-order the
P180-SQUARES
Quilt Pattern



Sparklers by Wendy Sheppard



Quilt Size 60" x 60"

estimated requirements

- (1) FQ-15220-21 Fat Quarter Bundle

Additional Fabrics

- 2 Yards C120-LECREME Confetti Cotton (Background)
- 5/8 Yard C15222-EGGPLANT Dancing Daisies (Binding)
- 1 7/8 Yards WB14183-SEAGLASS Bee Dots (Backing)



Pre-order the
P180-SPARKLERS
Quilt Pattern





C15221 Dark Forest Sprigs



C15222 Hot Pink Dancing Daisies

eat, drink and be merry Carpe' diem A bird in the hand is worth two in the bush

STEP UP TO THE PLATE *Today is the first day of the rest of your life*

Don't let yesterday take up too much of today. MAN UP! Spread your wings and fly There is no substitute for hard work Be the change you want to see

What we think, we become. Words and ideas can change the world. If you can dream it, you can do it. Doubt kills dreams. LAUGH

Sing in the shower *Never never never give up Color is beautiful*

No one can make you feel inferior without your consent

Dare Greatly

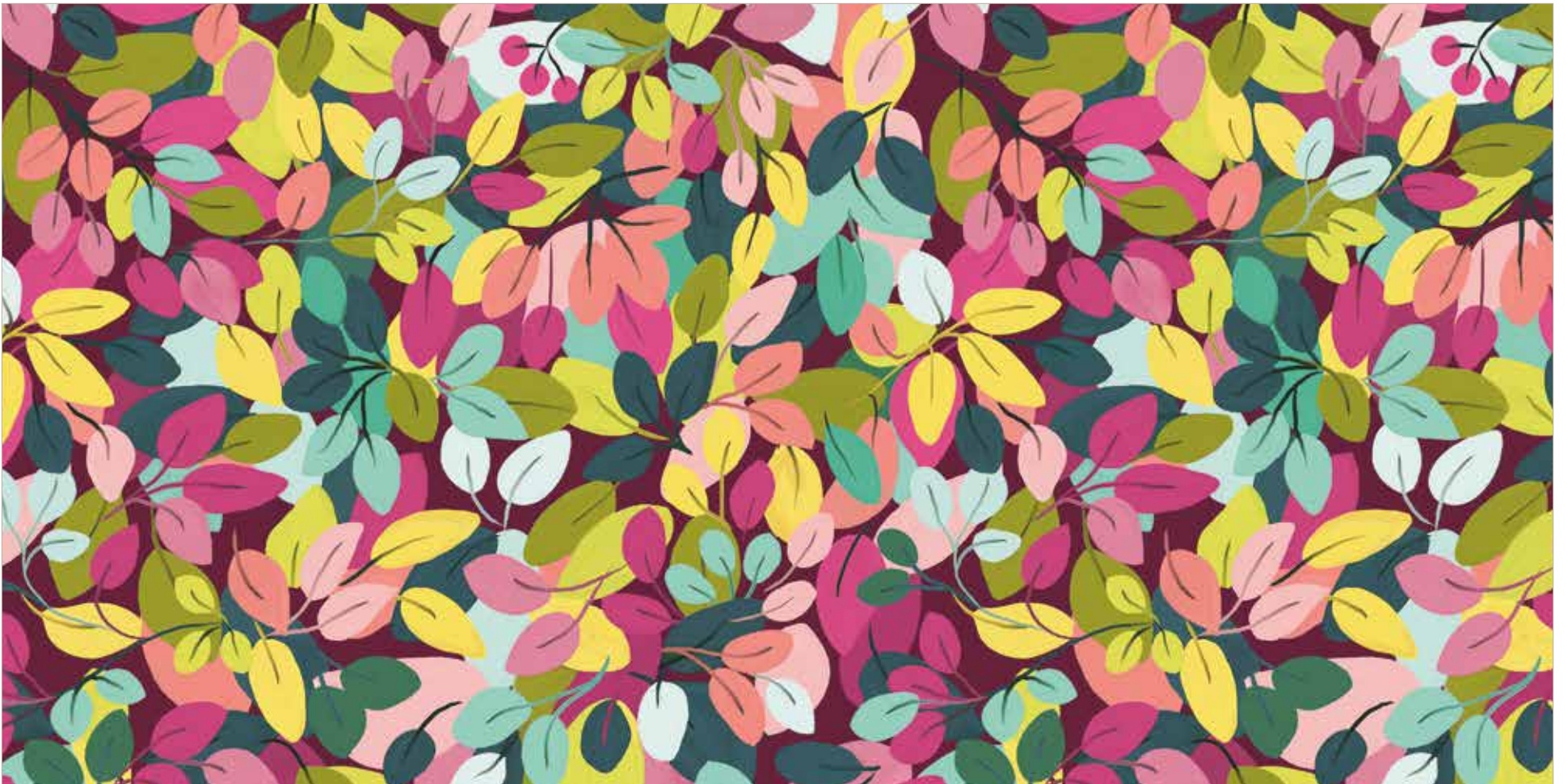
No pressure, no diamonds You miss 100% of the shots you don't take

The best way out is always through Spread love everywhere you go

If you think you can or think you can't, you're right Dance like no one is watching

PLANT A TREE

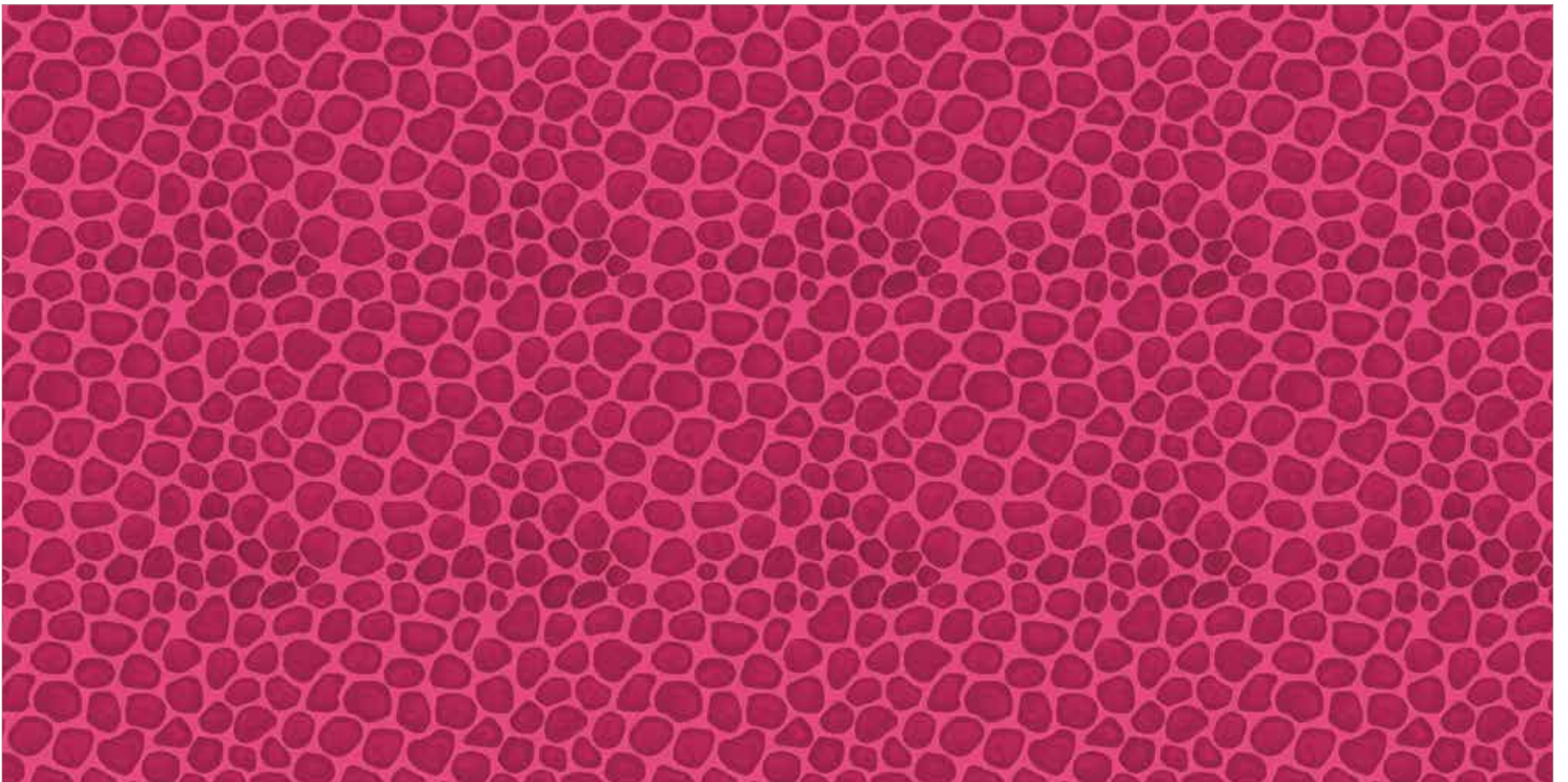
C15223 Navy Script



C15224 Maroon Leaves



C15225 Blush Flowers



C15226 Hot Pink Stony Path



C15220 Mint Main

Shown as Repeat 44" x 36"



About the Line

Let's take a stroll through the vibrant *Fragrant Fields* designer fabric collection by none other than Lila Tueller. You'll fall madly in love with these painterly florals in a decadent color palette of blush, maroon, eggplant, lilac, forest, and navy. The text print features words of encouragement and beautiful reminders on how to live life to the fullest. Your quilts and home décor projects will reach new heights with this stunning and colorful collection.

Lila Tueller
@lilatuellercabric

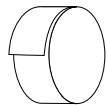
precuts



FFYD-15220



Flat Fold Bundle
25 Yards



RP-15220-40



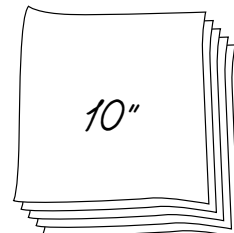
Rolie Polie
40 Pieces



5-15220-42



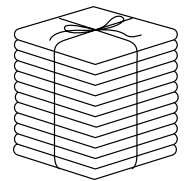
5-Inch Stacker
42 Pieces



10-15220-42



10-Inch Stacker
42 Pieces



FQ-15220-21



Fat Quarter Bundle
21 Pieces

pre-order only

ADD ANY LAMINATE WITH 100 YARDS MINIMUM



1YD-15220E-7



Eggplant - 1-Yard Bundle
7 Pieces



1YD-15220MA-7



Maroon - 1-Yard Bundle
7 Pieces



1YD-15220MI-7



Mint - 1-Yard Bundle
7 Pieces

CP10-15220-21



10-Yard Case Pack

CP15-15220-21



15-Yard Case Pack

available August 2024 **last call March 1, 2024**

100% FINE COTTON · 43/44" WIDE · MADE IN KOREA



9646 South 500 West
Sandy, UT 84070
888.768.8454 · 801.816.0540
www.rileyblakedesigns.com

©2024 Riley Blake Designs & Lila Tueller

Machine Wash Cold
No Chlorine Bleach
Tumble Dry Low
Remove Promptly
Not Intended for Children's Sleepwear

The projects portrayed are virtual images. The look of the projects may differ with actual fabric.

The project virtual(s) shown may be different than the image shown on the pattern cover.

Approximate fabric requirements are listed to aid in estimating the amount of yardage to order and are subject to change.

Backing yardage is shown using the best use of fabric and may not be intended for directional fabric.