

INTRODUCES

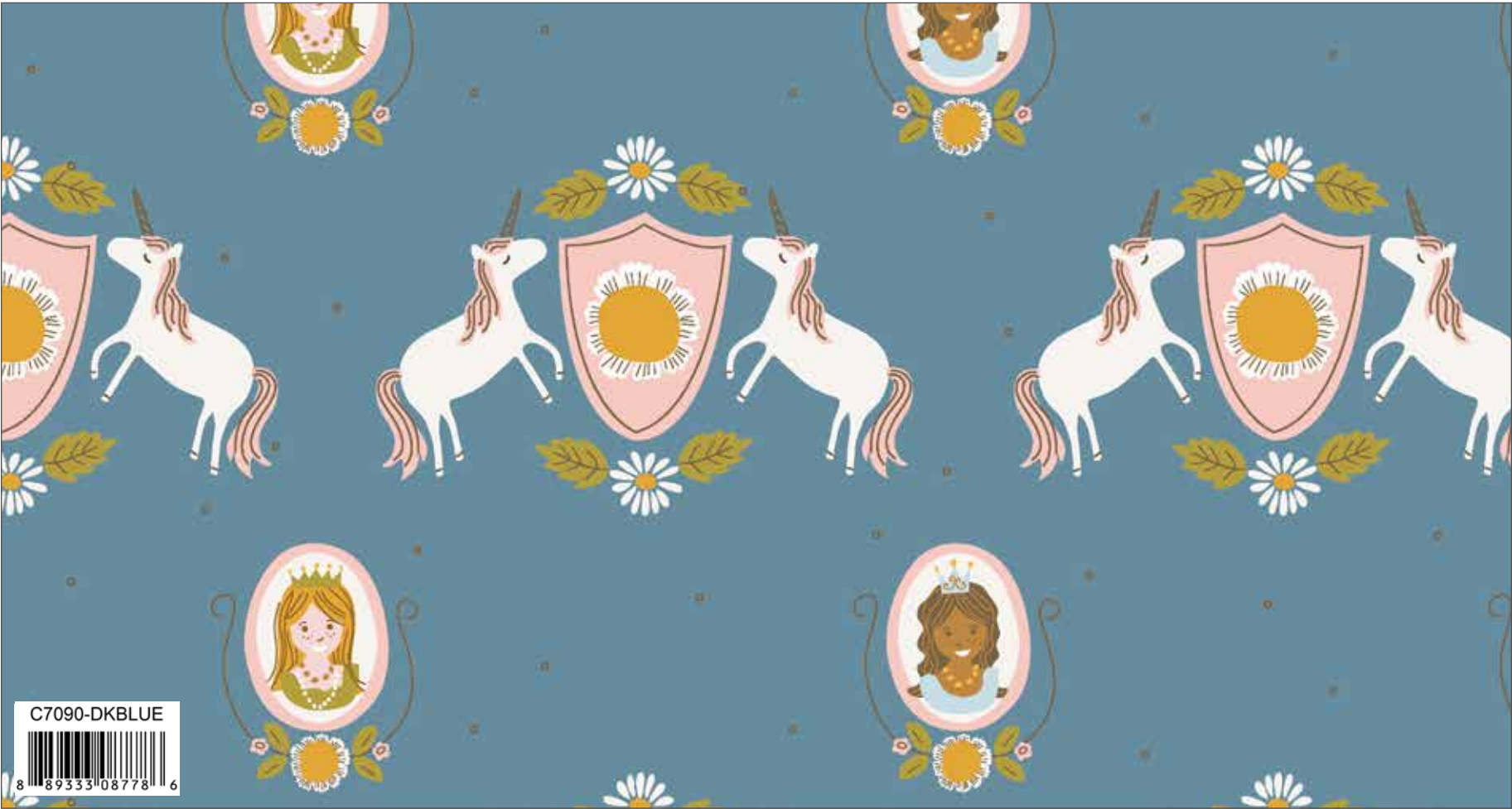
# GUINEVERE

BY citrus & mint DESIGNS



You'll Love the  
Patterns Inside!





Dark Blue Guinevere Main



Pink Guinevere Castle



Cream Guinevere Flower



Cream Guinevere People



Blue Guinevere Dress Up



Green Guinevere Daisy Chain



Hot Pink Guinevere Bows



Riley Baby Pink Solid



Lipstick Swiss Dot



Olive Solid



Teal Mini Hashtag



Cadet Solid





Cream Guinevere Main



Hot Pink Guinevere Castle



Pink Guinevere Flower



Pink Guinevere People



Cream Guinevere Dress Up



Cream Guinevere Daisy Chain



Dark Blue Guinevere Bows



Boy Blue Solid



Le Crème Navy Swiss Dot



Riley Mustard Solid



Tutu Shade



Cloud Solid





Hot Pink Guinevere Main



Cream Guinevere Castle



Dark Blue Guinevere Flower



Blue Guinevere People



Pink Guinevere Dress Up



Hot Pink Guinevere Daisy Chain



Pink Guinevere Bows



Linen Shade



Le Crème Lime Swiss Dot



Mustard Swiss Dot



1/8" Peony Stripe



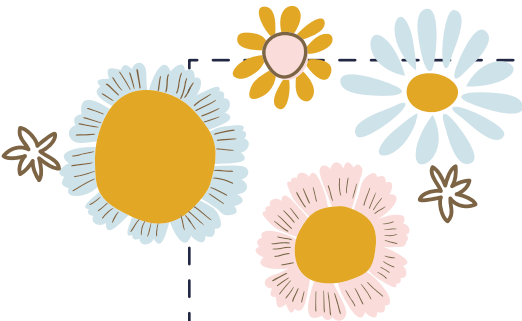
Riley Raspberry Solid  
C: COTTON



“Buttercup” by Meags & Me



Quilt Size 40” x 40”



Fabric Requirements

- FQ-7090-21 Fat Quarter Bundle
- 2 3/4 Yards C120 Bleached Denim Solid
- 6” x 12” Solid for Face, Neck, and Hands
- 3” x 5” Solid for Cheeks
- 10” x 22” Solid for Hair
- 5” x 7” Solid for Boots
- 2 Yards Fusible-Web for Applique
- Brown, Orange, Green, and Gray Embroidery Floss
- Binding: 1/2 Yard



Pre-order the Buttercup  
Quilt Pattern

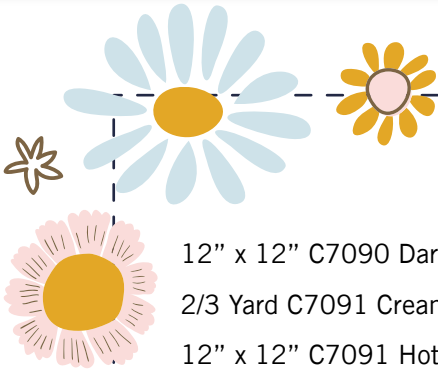




“Daffodil” by Meags & Me



Quilt Size 40” x 44”



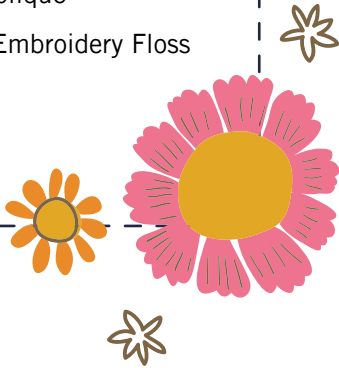
Fabric Requirements

- 12” x 12” C7090 Dark Blue Main
- 2/3 Yard C7091 Cream Castle
- 12” x 12” C7091 Hot Pink Castle
- 5” x 5” C7092 Cream Flower
- 12” x 12” C7092 Pink Flower
- 12” x 12” C7094 Blue Dress Up
- 8” x 10” C7094 Cream Dress Up
- 6” x 6” C7094 Pink Dress Up
- 7” x 7” C7095 Cream Daisy Chain
- 12” x 12” C7095 Green Daisy Chain
- 10” x 10” C7095 Hot Pink Daisy Chain

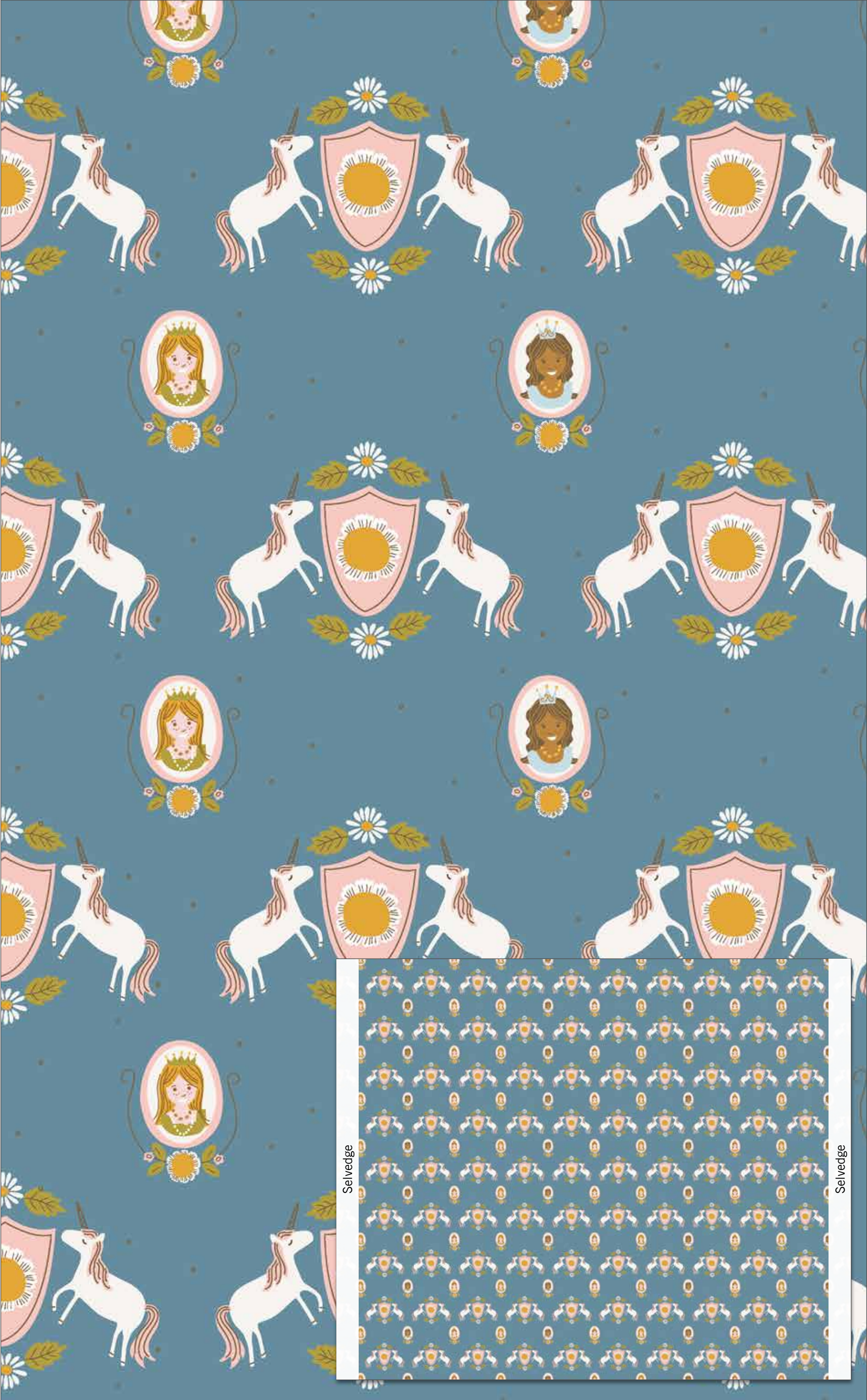
- 8” x 10” C7096 Blue Bows
- 6” x 6” C7096 Hot Pink Bows
- 1/2 Yard C7096 Pink Bows
- 2/3 Yard C120 Bleached Denim Solid
- 8” x 14” Solid for Hair
- 3” x 5” Solid for Cheeks
- 8” x 10” Solid for Face, Neck, and Hands
- 2 Yards Fusible-Web for Applique
- Brown, Orange, and Green Embroidery Floss
- Binding: 3/4 Yard



Pre-order the Daffodil  
Quilt Pattern



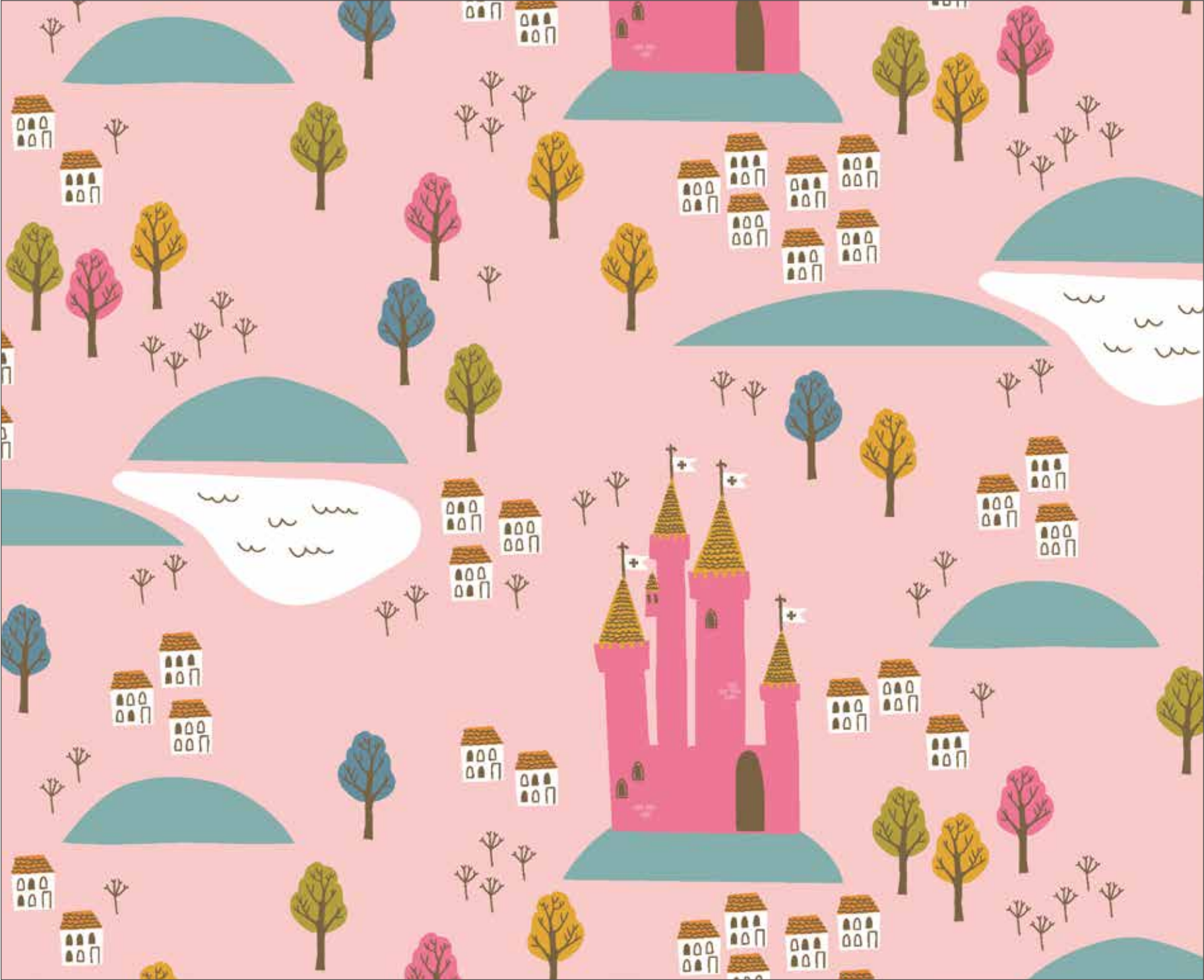




C7090 Dark Blue Guinevere Main

Shown as Repeat 44" x 36"  
C: COTTON





C7091 Pink Guinevere Castle



C7092 Dark Blue Guinevere Flower





C7093 Cream Guinevere People



C7094 Blue Guinevere Dress Up



C7095 Hot Pink Guinevere Daisy Chain



About the Artist



Rachel Erickson, of Citrus and Mint Designs, hails from the always beautiful, and almost always humid, Florida. Like many other designers at Riley Blake, she is a teacher turned stay-at-home mom who discovered illustration while searching for a hobby to maintain her sanity at home with two little children.

Rachel comes from a long line of seamstresses who she constantly disappoints with her aversion to “measuring twice, cutting once.” Illustrating is her passion. She is drawn to bright colors and a hand-drawn whimsical style, though she has to remind herself often that not everyone loves orange as much as she does.

When she isn’t illustrating, you can find her sipping diet coke while playing “kitty tornado waterslide” with her son (don’t ask), drawing baby animals with her daughter (mostly kitties), or combing the beach for more tiny shells and shark teeth to add to her borderline obsessive collection.



5-Inch Stacker  
42 Pieces



5-7090-42



10-Inch Stacker  
42 Pieces



10-7090-42



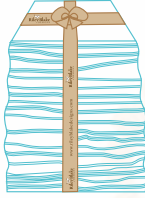
Rolie Polie  
40 Pieces



RP-7090-40



Fat Quarter



FQ-7090-21



PRE-ORDER ONLY

Add any laminate with 100 yards minimum

10-Yard Case Pack

CP10-7090-21



15-Yard Case Pack

CP15-7090-21



AVAILABLE APRIL 2018

100% FINE COTTON 43/44” WIDE • MACHINE WASH COLD • NO CHLORINE BLEACH • TUMBLE DRY LOW • REMOVE PROMPTLY

Riley Blake Designs • 9646 South 500 West, Sandy, Utah 84070  
Toll Free 1.888.768.8454 • Tel 801.816.0540 • Fax 801.816.0542

www.rileyblakedesigns.com

Not intended for children’s sleepwear

©2017 Riley Blake Designs and Citrus & Mint Designs

MADE IN KOREA