

HALLOWEEN AND HARVEST

by Gerri Robinson of Planted Seed Designs



Halloween and Harvest Booklet

Boo! We're back with a spooktacular and harvested assortment of quilts, table runners and wall hangings in our NEW color story booklet arriving Spring 2024!

The *Halloween and Harvest* projects come alive in *Floret's* Fall inspired colors of Black, Charcoal, Gray, Wagon Red, Red, Beach, Chive, Olive, Off White, Spice, Cider, Marigold, Autumn, Ginger, Ochre, Eggplant, Orchid and Violet.

Tucked inside the pages you'll find (12) projects consisting of Pumpkin Stars, Mummy Eyes, Spider Webs, Halloween Stars and an assortment of tossed leaves helping you to usher in that Autumn feeling into your home.

Happy Haunting and Leaf Raking Quilting!

Pre-order the
P120-HALLOWEEN
Quilt & Project
Pattern Booklet



AVAILABLE APRIL 2024

Leaf Quilts Design 1 and 2



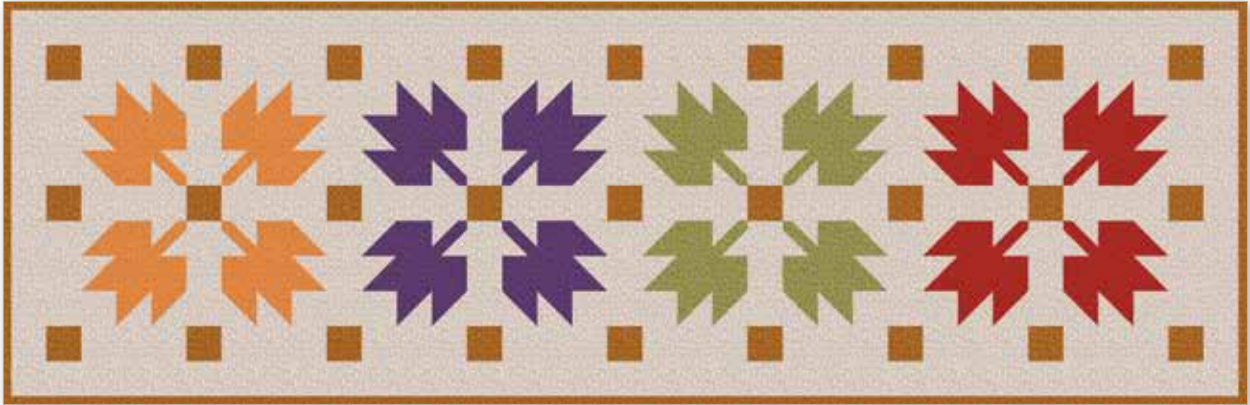
Quilt Size 50" x 66"



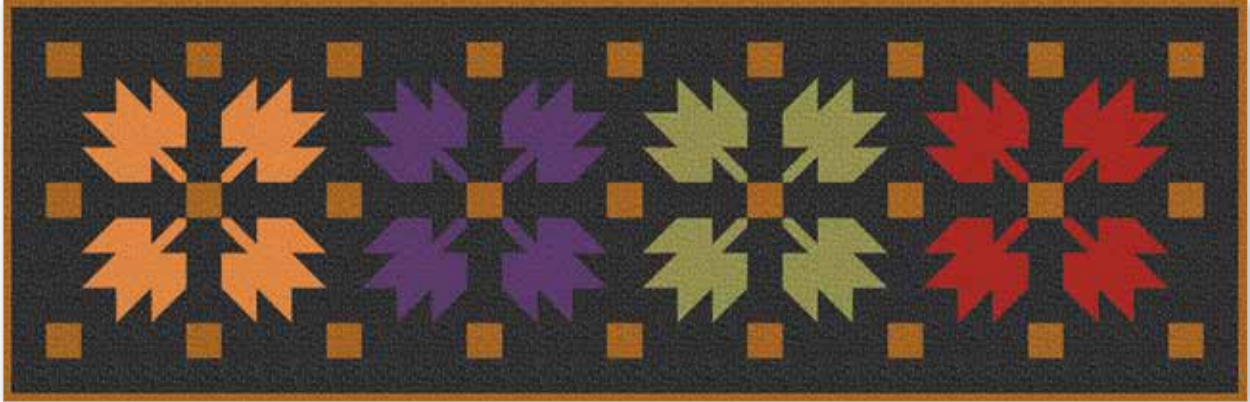
Quilt Size 50" x 66"

fabric requirements		
1/4 Yard of Each	C675-OCHRE Floret	Additional Fabrics 3 1/8 Yards C675-BEACH or C675-BLACK Floret (Background) 7/8 Yard C675-CIDER (Includes Binding)
	C675-AUTUMN Floret	
	C675-CHIVE Floret	
	C675-EGGPLANT Floret	
	C675-GINGER Floret	
	C675-MARIGOLD Floret	
	C675-OLIVE Floret	
	C675-ORCHID Floret	
	C675-RED Floret	
	C675-VIOLET Floret	
	C675-WAGONRED Floret	

Leaf Runners Design 1 and 2



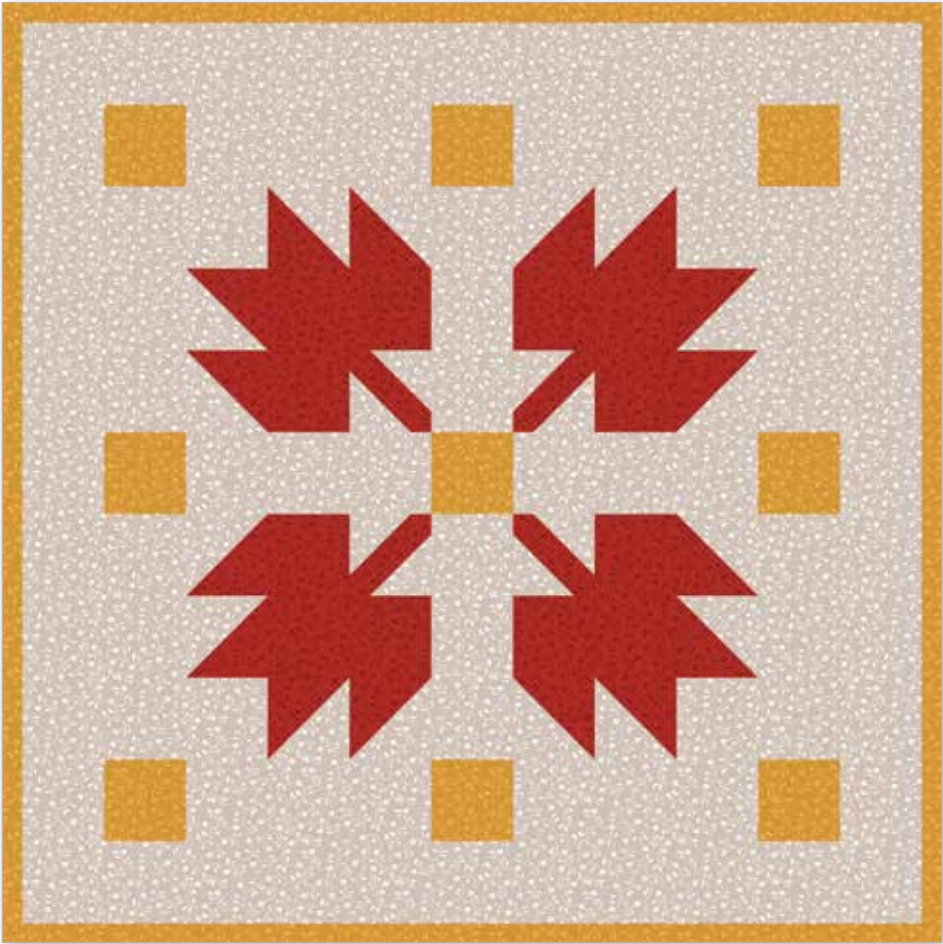
Runner Size 22" x 70"



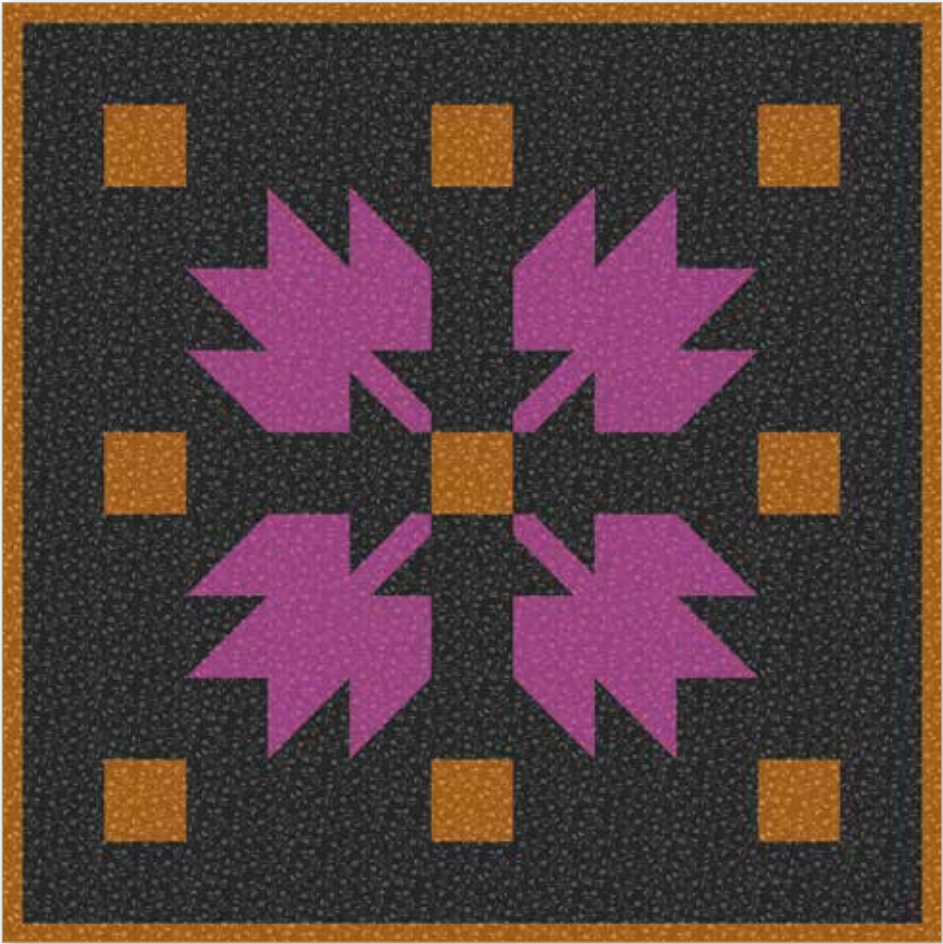
Runner Size 22" x 70"

fabric requirements	
1/4 Yard of Each	C675-EGGPLANT Floret
	C675-GINGER Floret
	C675-RED Floret
	C675-OLIVE Floret
	C675-ORCHID Floret
Additional Fabrics	
1 1/8 Yards C675-BEACH or C675-BLACK Floret (Background)	
1/2 Yard C675-SPICE (Includes Binding)	

Leaf Wall Hanging Design 1 and 2



Wall Hanging Size 22" x 22"



Wall Hanging Size 22" x 22"

fabric requirements

1/4 Yard C675-RED Floret

1/2 Yard C675-BEACH Floret (Background)

1/3 Yard C675-OCHRE Floret (Includes Binding)

fabric requirements

1/4 Yard C675-ORCHID Floret

1/2 Yard C675-BLACK Floret (Background)

1/3 Yard C675-SPICE Floret (Includes Binding)

Maple Leaf Runner



Runner Size 32" x 66"

fabric requirements

1/8 Yard of Each

C675-WAGONRED Floret

C675-RED Floret

C675-CHIVE Floret

C675-OLIVE Floret

C675-EGGPLANT Floret

C675-ORCHID Floret

C675-VIOLET Floret

C675-AUTUMN Floret

C675-GINGER Floret

C675-OCHRE Floret

Additional Fabrics

1 7/8 Yards C675-BLACK Floret (Includes Background)

7/8 Yard C675-SPICE Floret (Includes Binding)

Spider Webs Quilt and Runner



Quilt Size 60" x 80"



Runner Size 20" x 80"

fabric requirements

QUILT

3/4 Yards of Each

C675-AUTUMN Floret

C675-CHARCOAL Floret

C675-CHIVE Floret

C675-EGGPLANT Floret

C675-GINGER Floret

C675-GRAY Floret

C675-OLIVE Floret

C675-ORCHID Floret

C675-VIOLET Floret

Additional Fabrics

6 Yards C675-BLACK Floret (Background)

1/2 Yard C675-GINGER Floret (Binding)

RUNNER

1/3 Yard of Each

C675-GINGER Floret

C675-GRAY Floret

C675-OLIVE Floret

C675-VIOLET Floret

Additional Fabrics

1/2 Yard C675-BLACK Floret (Background)

3/8 Yard C675-GINGER Floret (Binding)

Mummy Eyes



Quilt Size 64" x 64"

fabric requirements

1/3 Yard of Each

C675-AUTUMN Floret

C675-CHARCOAL Floret

C675-CHIVE Floret

C675-EGGPLANT Floret

C675-GINGER Floret

C675-GRAY Floret

C675-OLIVE Floret

C675-ORCHID Floret

C675-VIOLET Floret

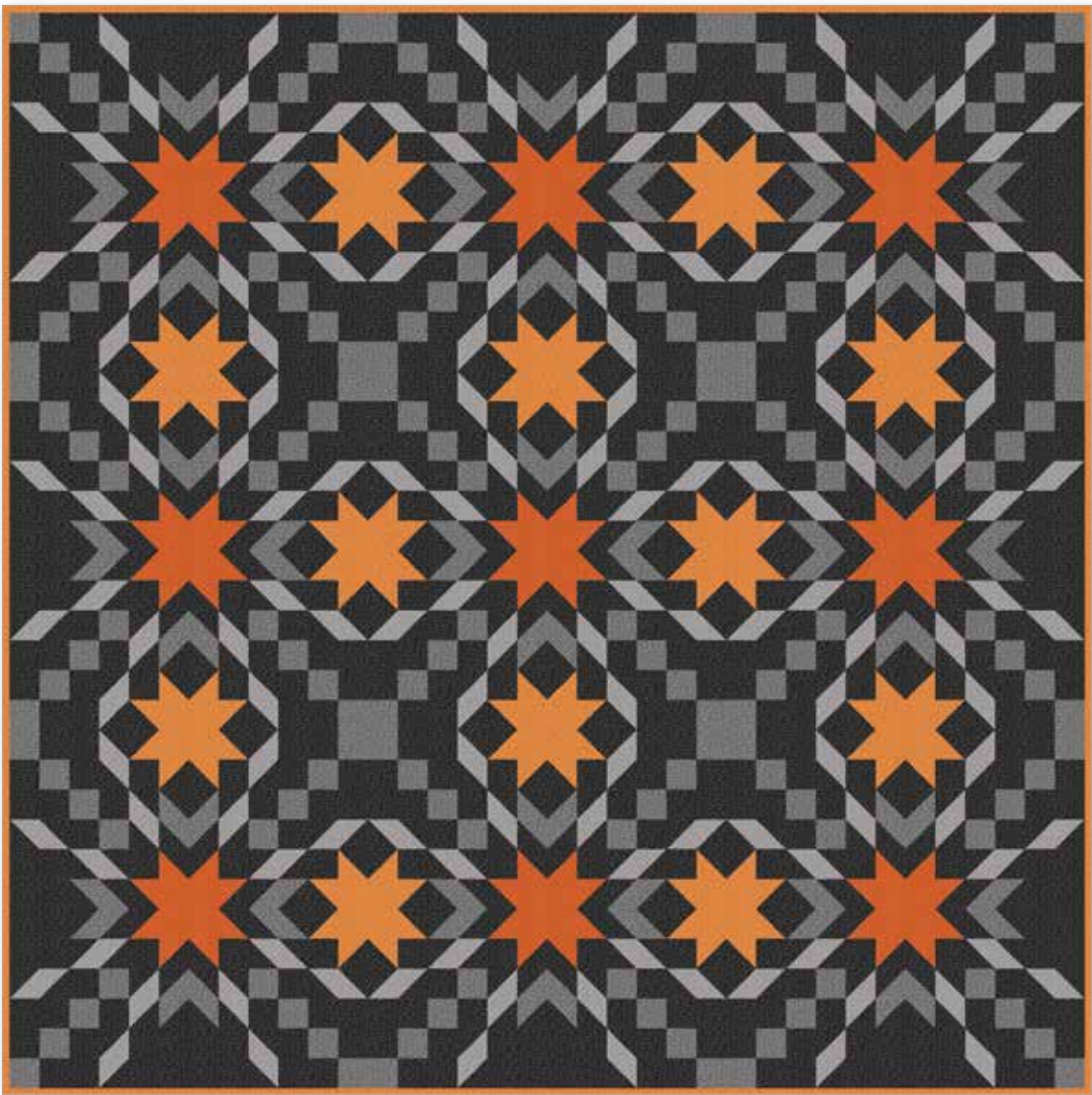
Additional Fabrics

1 1/8 Yards C675-OFFWHITE Floret

2 1/8 Yards C675-BLACK Floret

1/2 Yard C675-GINGER Floret (Binding)

Pumpkin Stars Quilt and Runner



Quilt Size 72" x 72"



Runner Size 24" x 72"

fabric requirements

QUILT

1 1/8 Yards of Each

C675-CHARCOAL Floret

C675-GRAY Floret

Additional Fabrics

2 1/4 Yards C675-AUTUMN Floret

2 7/8 Yards C675-GINGER Floret

7 Yards C675-BLACK Floret (Background)

1/2 Yard C675-GINGER Floret (Binding)

RUNNER

1/4 Yard of Each

C675-AUTUMN Floret

C675-GINGER Floret

Additional Fabrics

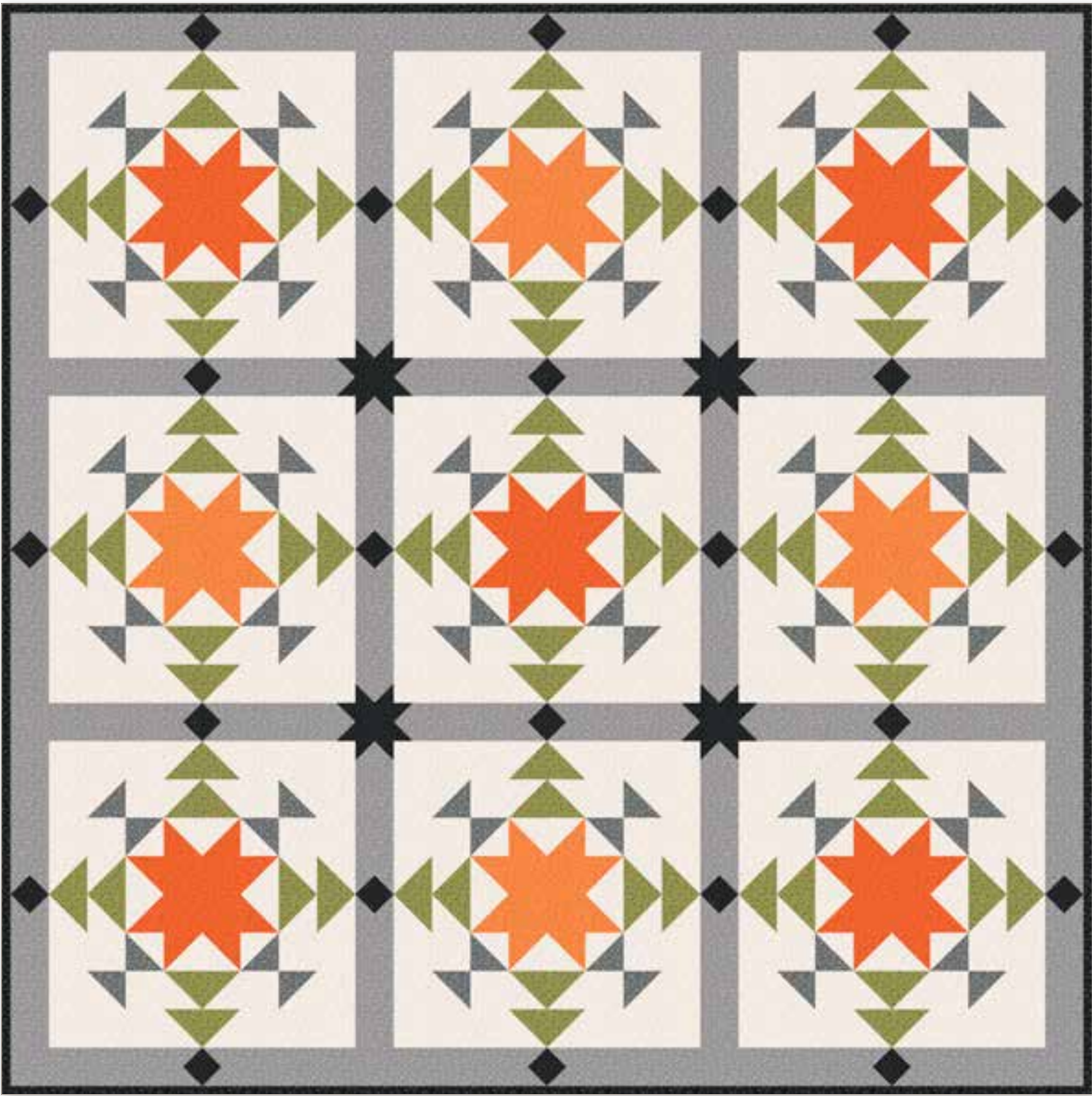
1/2 Yard C675-CHARCOAL Floret

3/8 Yard C675-GRAY Floret

1 3/4 Yards C675-BLACK Floret (Background)

1/3 Yard C675-GINGER Floret (Binding)

Halloween Stars



Quilt Size 56" x 56"

fabric requirements

1/3 Yard of Each

C675-AUTUMN Floret

C675-CHARCOAL Floret

C675-GINGER Floret

Additional Fabrics

1/4 Yard C675-BLACK Floret

5/8 Yard C675-OLIVE Floret

7/8 Yard C675-GRAY Floret

2 Yards C675-CREAM Floret (Background)

1/2 Yard C675-BLACK Floret (Binding)

HALLOWEEN AND HARVEST

Floret Available Now



Wagon Red



Red



Cherry



Autumn



Ginger



Chive



Ochre



Marigold



Cider



Spice



Olive



Navy



Coastal



Cornflower



Cadet



Violet



Orchid



Eggplant



Frost



Stone



Shell



Nutmeg



Beach



Ash



Cream



Gray



Charcoal



Black



White on White



Off White

Galaxy of Stars I & II Booklets Available Now



Galaxy of Stars
Galaxy of Stars is a compilation of six star-studded projects using only 5" stackers that shine bright in a patriotic palette of red, white, and blue. For the American Farmhouse lover, there's also a beautiful neutral palette of black, gray and cream. The 5" stackers are a single color precut giving you 42 5" squares of one color, perfect for a myriad of projects.



Galaxy of Stars II: 2 Color Quilts
9 NEW designs! This booklet has the same design premise as Galaxy of Stars, utilizing (4) simple quilting elements of a 4-Patch block, 4", 8" and 16" star blocks to create these unique and classic designs. The designs consist of the ever popular and classic 2 Color combos of Red/White, Blue/White and Black/White.



available April 2024 last call November 1, 2023

FLORET FABRIC IS 100% FINE COTTON · 43/44" WIDE · MADE IN KOREA



9646 South 500 West
Sandy, UT 84070
888.768.8454 · 801.816.0540
www.rileyblakedesigns.com

©2023 Riley Blake Designs & Gerri Robinson

Machine Wash Cold
No Chlorine Bleach
Tumble Dry Low
Remove Promptly
Not Intended for Children's Sleepwear

The projects portrayed are virtual images. The look of the projects may differ with actual fabric.

The project virtual(s) shown may be different than the image shown on the pattern cover.

Approximate fabric requirements are listed to aid in estimating the amount of yardage to order and are subject to change.

Backing yardage is shown using the best use of fabric and may not be intended for directional fabric.