



INTRODUCES



# Heartfelt

Gerri Robinson of Planted Seed Designs

AVAILABLE JUNE 2023  
*Last Call*  
Jan 1, 2023  
R-5





Ruby Heartfelt Main



Ruby Heartfelt Floral



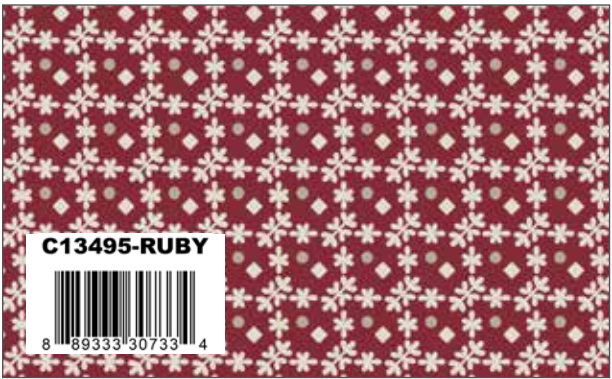
Taupe Heartfelt Trellis



Beige Heartfelt Blossoms



Ruby Heartfelt Bouquets



Ruby Heartfelt Geo Floral



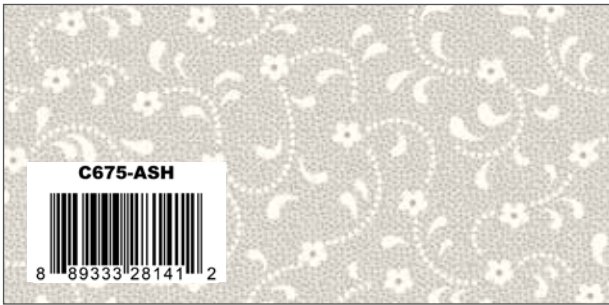
Cream Heartfelt Flower Buds



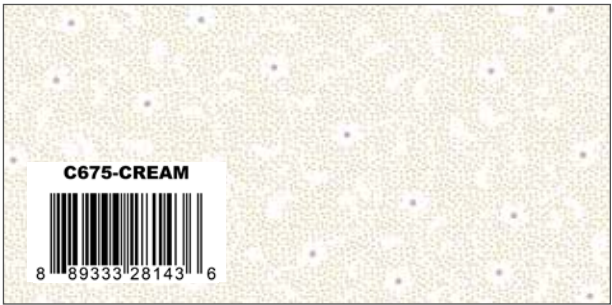
Light Taupe Heartfelt Ditsy



Riley Burgundy Solid



Ash Floret



Cream Floret





White Heartfelt Main



White Heartfelt Floral



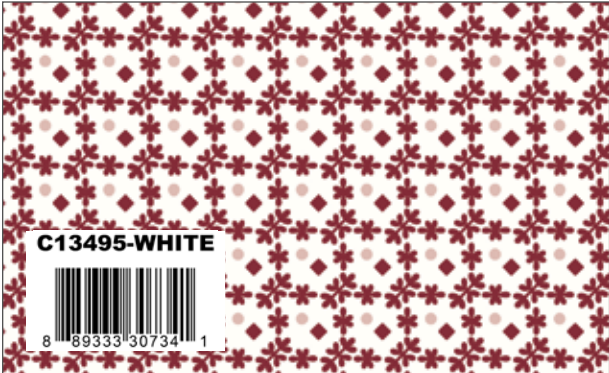
Cream Heartfelt Trellis



Rose Heartfelt Blossoms



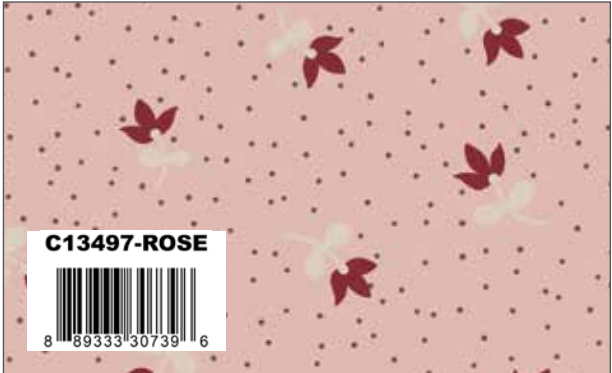
Taupe Heartfelt Bouquets



White Heartfelt Geo Floral



Ruby Heartfelt Flower Buds



Rose Heartfelt Ditsy



Brick Solid



Beach Floret



White-on-White Floret

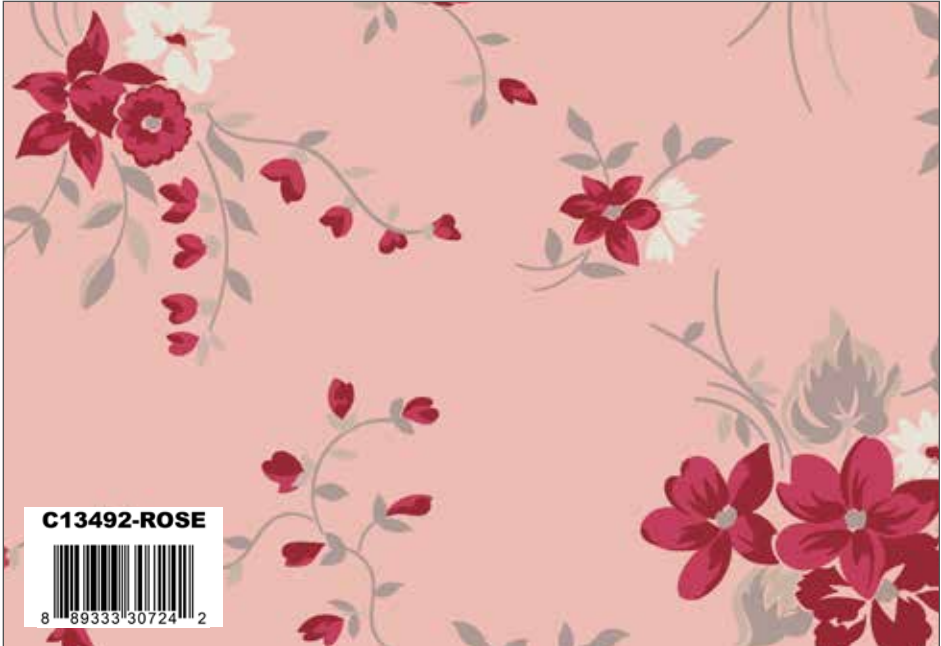




Taupe Heartfelt Main



Rose Heartfelt Floral



Rose Heartfelt Trellis



Taupe Heartfelt Blossoms



Cream Heartfelt Bouquets



Light Taupe Heartfelt Geo Floral



Rose Heartfelt Flower Buds



Ruby Heartfelt Ditsy



Wagon Red Floret



Off White Floret



Frosting Solid



Heartfelt Panels



Heartfelt Panel #1(10 panels per bolt)  
Scaled to 20% | Actual Size is 36" x 43½"

PD13498-PANEL



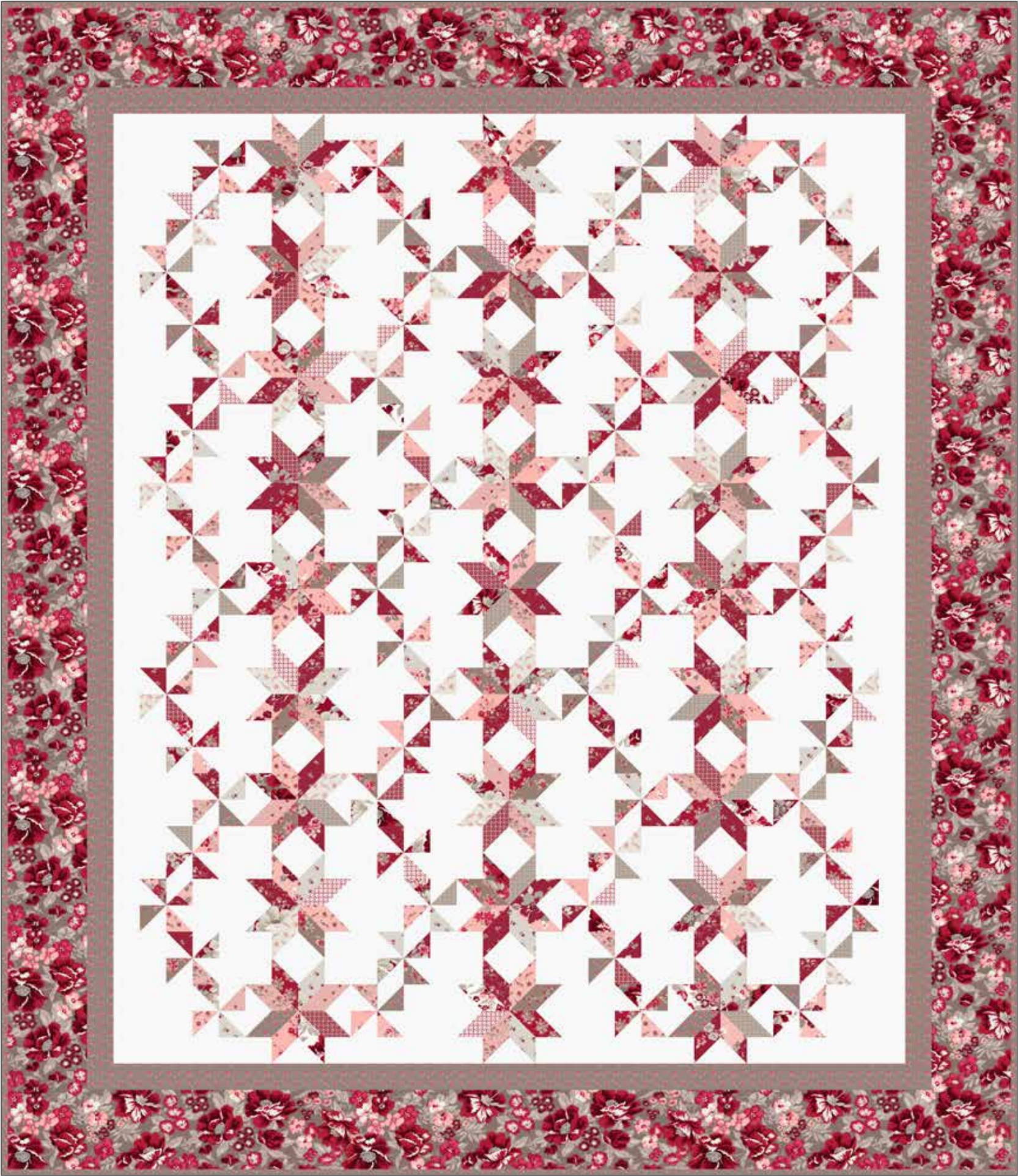
Heartfelt Panel #2 (10 panels per bolt)  
Scaled to 20% | Actual Size is 36" x 43½"

PD13499-PANEL





Woven in Pinwheels by Gerri Robinson



Quilt Size 75" x 87"

Fabric Requirements

1 FQ-13490-24 Heartfelt Fat Quarter Bundle

2 3/4 Yards C13490 Taupe Main

1 1/3 Yards C13493 Taupe Blossoms (Includes Binding)

3 3/4 Yards C675 White-on-White Floret



Pre-order the  
P124-WOVENINPINWHEELS  
Quilt Pattern

\* **Approximate** fabric requirements are listed to aid in estimating the amount of yardage to order and are **subject to change**.  
The projects portrayed are virtual images. The look of the projects may differ when using actual fabric.  
The quilt virtual shown on this page may be different than the image shown on the pattern cover.



Dancing with the Stars 1 by Gerri Robinson



Quilt Size 68" x 68"

Fabric Requirements

1/3 Yard of Each:

- C13491 Ruby Foral
- C13492 Taupe Trellis
- C13493 Taupe Blossoms
- C13494 Taupe Bouquets
- C13494 Ruby Bouquets
- C13495 Light Taupe Geo Floral
- C13496 Ruby Flower Buds
- C13497 Light Taupe Ditsy

1/2 Yard of Each:

- C13490 Ruby Main
- C13490 Taupe Main
- C13491 Rose Floral
- C13492 Rose Trellis
- C13493 Rose Blossoms
- C13495 Ruby Geo Floral
- C13496 Rose Flower Buds
- C13497 Rose Ditsy

Other Fabrics:

- 3/4 Yards C13497 Ruby Ditsy (Binding)
- 4 1/4 Yards C675 White-on-White Floret



Pre-order the  
P124-DANCINGWITHTHESTARS1  
Quilt Pattern

Dancing with the Stars 2 by Gerri Robinson



Quilt Size 68" x 68"

Fabric Requirements

1/3 Yard of Each:

- C13491 Ruby Foral
- C13492 Taupe Trellis
- C13493 Taupe Blossoms
- C13494 Taupe Bouquets
- C13494 Ruby Bouquets
- C13495 Light Taupe Geo Floral
- C13496 Ruby Flower Buds
- C13497 Light Taupe Ditsy

1/2 Yard of Each:

- C13490 Ruby Main
- C13490 Taupe Main
- C13491 Rose Floral
- C13492 Rose Trellis
- C13493 Rose Blossoms
- C13495 Ruby Geo Floral
- C13496 Rose Flower Buds
- C13497 Rose Ditsy

Other Fabrics:

- 3/4 Yards C13493 Rose Blossoms (Binding)
- 2 1/4 Yards C13497 Ruby Ditsy
- 2 3/8 Yards C675 White-on-White Floret



Pre-order the  
P124-DANCINGWITHTHESTARS2  
Quilt Pattern

\* **Approximate** fabric requirements are listed to aid in estimating the amount of yardage to order and are **subject to change**.  
The projects portrayed are virtual images. The look of the projects may differ when using actual fabric.  
The quilt virtual shown on this page may be different than the image shown on the pattern cover.



Star Spangled by Gerri Robinson



Quilt Size 74" x 74"

Fabric Requirements

- 2 3/8 Yards C13490 White Main
- 5/8 Yard C13491 Ruby Floral
- 1/4 Yard C13492 Taupe Trellis
- 1 7/8 Yards C13493 Taupe Blossoms
- (Includes Binding)
- 1/4 Yard C13494 Taupe Bouquets
- 5/8 Yard C13494 Ruby Bouquets
- 1/4 Yard C13495 Light Taupe Geo Floral
- 5/8 Yard C13496 Ruby Flower Buds
- 5/8 Yard C13497 Ruby Ditsy
- 3 1/4 Yards C675 White-on-White Floret

- Fat 1/8 of Each:**
- C13490 Ruby Main
  - C13490 Taupe Main
  - C13490 White Main
  - C13492 Rose Trellis
  - C13493 Rose Blossoms
  - C13493 Beige Blossoms
  - C13495 Ruby Geo Floral
  - C13496 Rose Flower Buds
  - C13497 Rose Ditsy
  - C13497 Light Taupe Ditsy



Pre-order the  
P124-STARSPANGLED  
Quilt Pattern

9 Patch Stars by Gerri Robinson



Quilt Size 68" x 68"

Fabric Requirements

- 1 FQ-13490-24 Heartfelt Fat Quarter Bundle
- 2 1/8 Yard C13490 Taupe Main
- 1 3/4 Yards C13497 Light Taupe Ditsy
- (Includes Binding)
- 2 1/8 Yards C675 White-on-White Floret



Pre-order the  
P124-9PATCHSTARS  
Quilt Pattern

\* **Approximate** fabric requirements are listed to aid in estimating the amount of yardage to order and are **subject to change**.  
The projects portrayed are virtual images. The look of the projects may differ when using actual fabric.  
The quilt virtual shown on this page may be different than the image shown on the pattern cover.



Casual Classic Quilts Book Re-Imagined by Gerri Robinson

For patterns and re-imagined quilt updated materials and cutting directions visit:  
<https://plantedseeddesigns.com> and <https://plantedseeddesigns.com/pages/re-imagined-quilts>

Dazzling Blooms



A Star Within



Hope



Pre-order the  
P124-CASUALCLASSICS  
Quilt Book

Rustic Romance Book Re-Imagined by Gerri Robinson

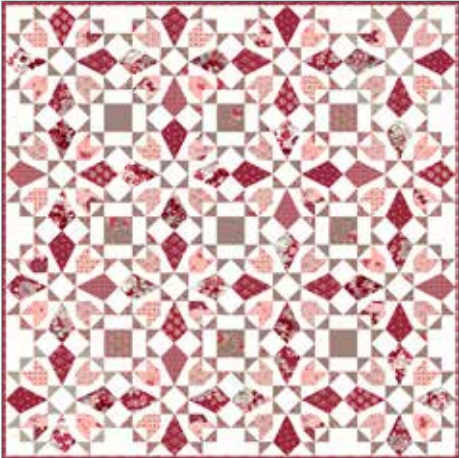
Haven



Journey



Rustic Village



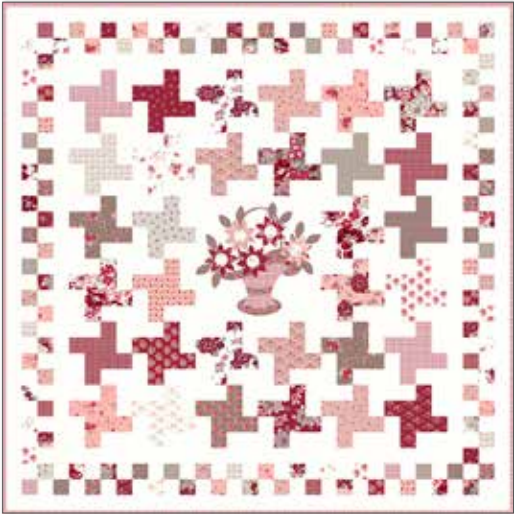
Unique



Pre-order the  
P124-RUSTICROMANCE  
Quilt Book

Patterns Re-Imagined by Gerri Robinson

Hopscotch



Pre-order the  
P124-HOPSCOTCH  
Quilt Pattern

Swirls



Pre-order the  
P124-SWIRLS  
Quilt Pattern

Majestic



Pre-order the  
P124-MAJESTIC  
Quilt Pattern

\* **Approximate** fabric requirements are listed to aid in estimating the amount of yardage to order and are **subject to change**.  
The projects portrayed are virtual images. The look of the projects may differ when using actual fabric.  
The quilt virtual shown on this page is different than the image shown on the pattern cover.



# About the Line



Gerri Robinson  
@plantedseeddesigns

Introducing *Heartfelt*! A classic red, white, taupe and soft pink collection of florals and ditsy companion prints.

So many of you have been asking me to design another “red” line similar to *Rustic Romance* and I hope I hit the mark with *Heartfelt*!

As you can imagine, ALL my original “*Rustic Romance*” designs would look incredibly beautiful in *Heartfelt* along with several of my all-time classic designs, REFRESHED in *Heartfelt* too!

We’re also bringing back the ever-popular faux applique Blooming Basket Panels and REFRESHED the designs showcasing how to use them in quilts.

The options are endless from pre-cut quilts, to a bit more advanced quilts to quilts with faux applique baskets (without the applique) to round out the variety and selection of projects to tackle.

Well, did I hit the mark and deliver on another winner? I sure hope so!

Happy Red and White Classic Quilting!

## PRECUTS

Flat Fold Bundle  
25 Yards

**FFYD-13490**



8 89333 30752 5

5-Inch Stacker  
42 Pieces



**5-13490-42**



8 89333 30744 0

10-Inch Stacker  
42 Pieces



**10-13490-42**



8 89333 30743 3

Rolie Polie  
40 Pieces



**RP-13490-40**



8 89333 30745 7

Fat Quarter



**FQ-13490-24**



8 89333 30746 4

## PRE-ORDER ONLY

ADD ANY LAMINATE WITH 100 YARDS MINIMUM  
PANELS ARE INCLUDED IN CASE PACKS

10-Yard Case Pack

**CP10-13490-26**



8 89333 30747 1

15-Yard Case Pack

**CP15-13490-26**



8 89333 30748 8

Ruby - 1 Yard Bundle  
8 Pieces

**1YD-13490R-8**



8 89333 30749 5

Taupe - 1 Yard Bundle  
8 Pieces

**1YD-13490T-8**



8 89333 30750 1

White - 1 Yard Bundle  
8 Pieces

**1YD-13490W-8**



8 89333 30751 8

AVAILABLE JUNE 2023 – LAST CALL JANUARY 1, 2023

100% FINE COTTON 43/44” WIDE • MACHINE WASH COLD • NO CHLORINE BLEACH • TUMBLE DRY LOW • REMOVE PROMPTLY

.....

Riley Blake Designs • 9646 South 500 West, Sandy, Utah 84070

Toll Free 1.888.768.8454 • Tel 801.816.0540

www.rileyblakedesigns.com

Not intended for children’s sleepwear

©2022 Riley Blake Designs and Gerri Robinson

MADE IN KOREA