

Huckleberry Salbox



by Karen Walker of
Laugh Yourself Into Stitches



AVAILABLE JANUARY 2024 | R-3
LAST CALL - AUGUST 1, 2023



Independence Main



Mahogany Wreaths



Oxford Tile



Brown Blocks



Mahogany Doorknobs



Pewter Branches



Stone Sprigs



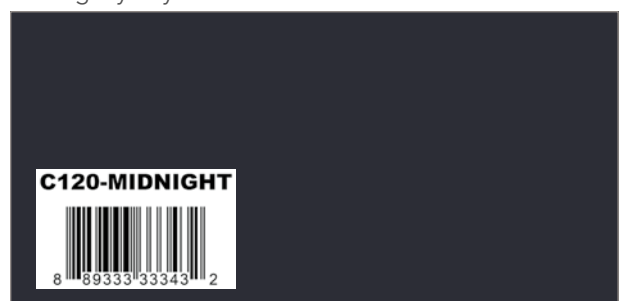
Mahogany Keys



NEW Dahlia Red Solid



Navy POParazzi



NEW Midnight Solid



C14350-OATMEAL



Oatmeal Main



C14351-BROWN



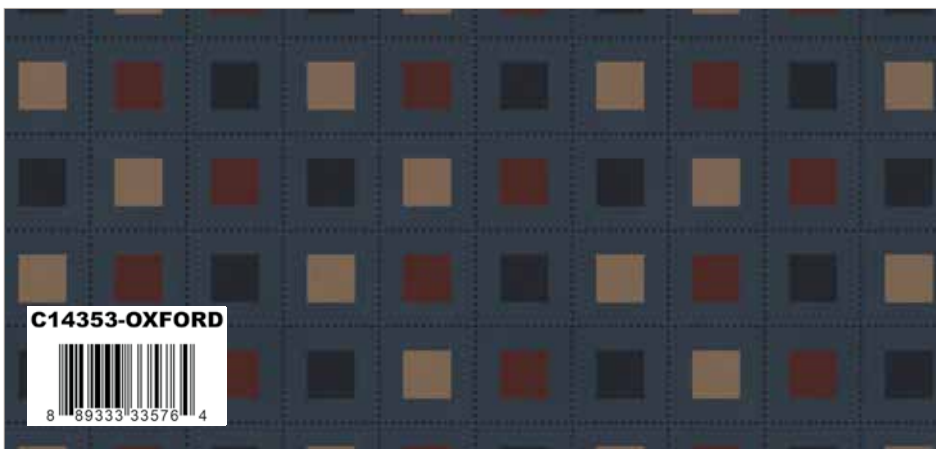
Brown Wreaths



C14352-MAHOGANY



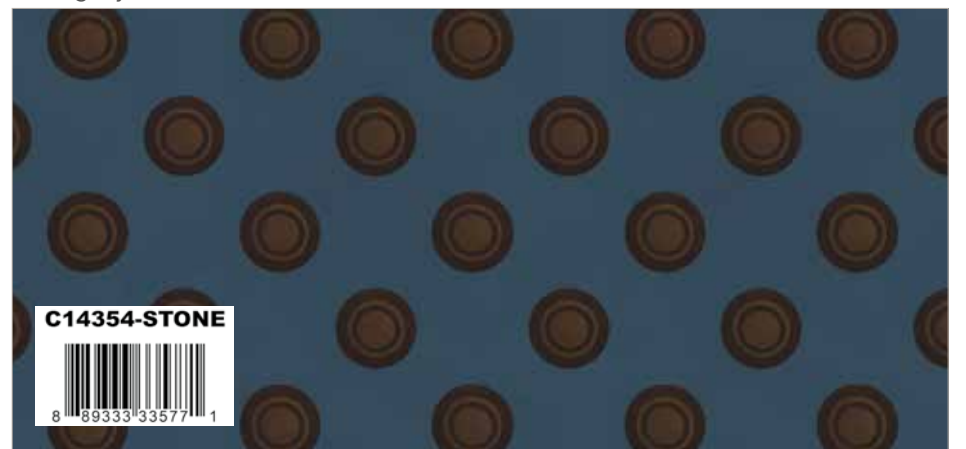
Mahogany Tile



C14353-OXFORD



Oxford Blocks



C14354-STONE



Stone Doorknobs



C14355-TAUPE



Taupe Branches



C14356-WINE



Wine Sprigs



C14357-STONE



Stone Keys



C120-TWILIGHT



NEW Twilight Solid



C605-BRICK



Brick Shabby



C610-CREAM



Cream Texture



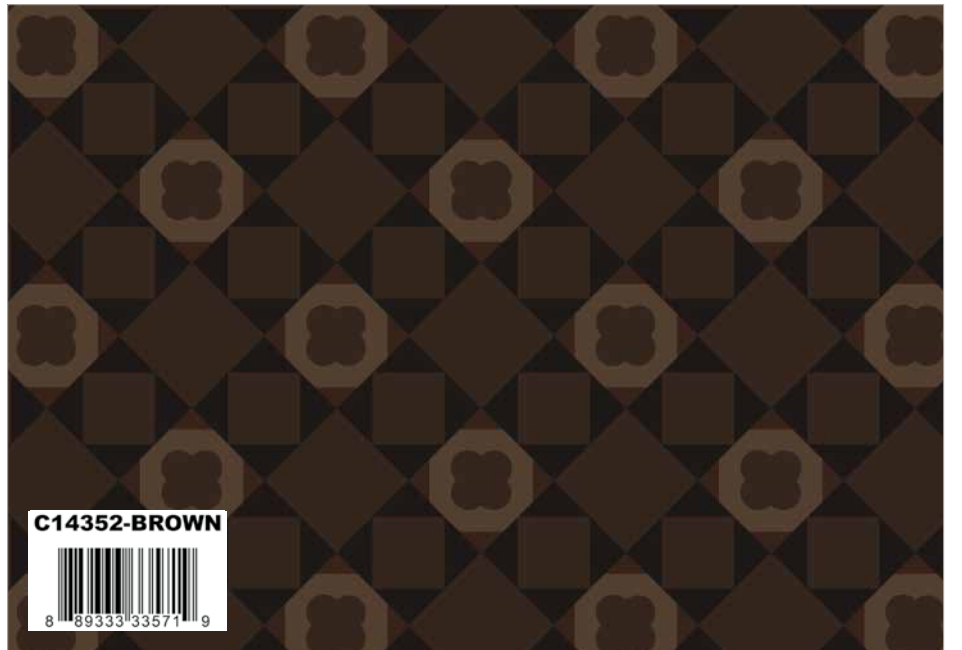
C14350-BROWN
8 89333 33565 8

Brown Main



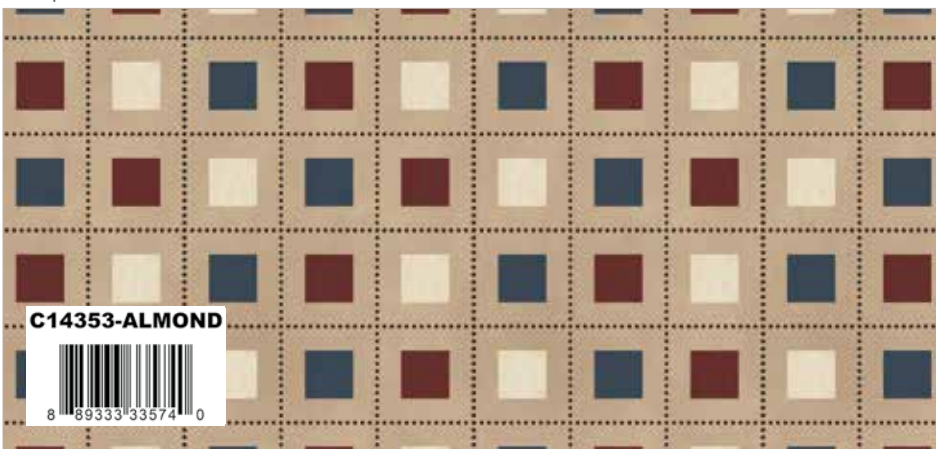
C14351-INDEPENDENCE
8 89333 33567 6

Independence Wreaths



C14352-BROWN
8 89333 33571 9

Brown Tile



C14353-ALMOND
8 89333 33574 0

Almond Blocks



C14354-OXFORD
8 89333 33579 5

Oxford Door knobs



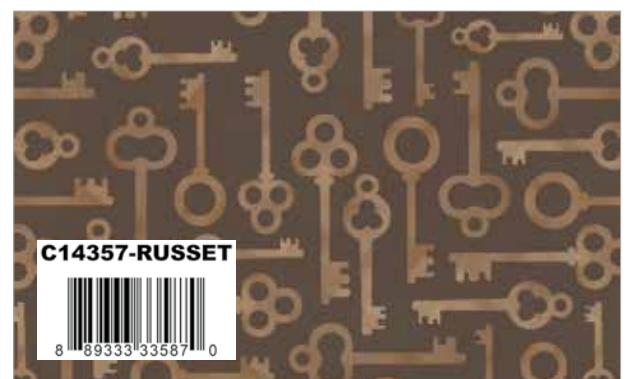
C14355-OATMEAL
8 89333 33580 1

Oatmeal Branches



C14356-ALMOND
8 89333 33583 2

Almond Sprigs



C14357-RUSSET
8 89333 33587 0

Russet Keys



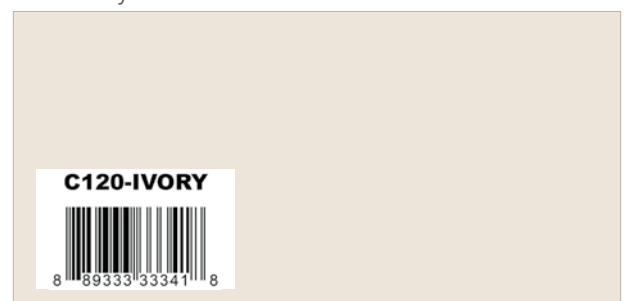
C605-NAVY
8 89333 13551 7

Navy Shabby



C805-SAND
8 89333 31466 0

Sand POParazzi



C120-IVORY
8 89333 33341 8

NEW Ivory Solid

Huckleberry Haven by Karen Walker



Quilt Size 60" x 60"

Fabric Requirements

7/8 Yard C14350 Brown Main	1/2 Yard C14354 Stone Doorknobs
1/4 Yard C14351 Brown Wreaths	1/8 Yard C14355 Oatmeal Branches
3/8 Yard C14352 Mahogany Tile	2 1/4 Yards C14356 Almond Sprigs
1/2 Yard C14353 Almond Blocks	1/3 Yard C14357 Mahogany Keys
2/3 Yard C14353 Brown Blocks (Binding)	1/8 Yard C14357 Russet Keys
1/2 Yard C14354 Mahogany Doorknobs	1/4 Yard C14357 Stone Keys
1/2 Yard C14354 Oxford Doorknobs	Backing: 1 7/8 Yards *WB605 Allspice Shabby

Pre-order the
P197-HUCKLEBERRYHAVEN
Quilt Pattern



*Wide Back measurement is shown using the best use of fabric and may not be intended for directional Wide Back fabric.

* **Approximate** fabric requirements are listed to aid in estimating the amount of yardage to order and are subject to change. The projects portrayed are virtual images. The look of the projects may differ when using actual fabric. The quilt virtual shown on this page may be different than the image shown on the pattern cover.

Huckleberry Harvest by Karen Walker



Quilt Size 66" x 84"

Fabric Requirements

1 3/8 Yards C14350 Independence Main

5/8 Yard C14351 Mahogany Wreaths

1/2 Yard C14352 Mahogany Tile

1 Yard C14352 Oxford Tile

2/3 Yard C14353 Brown Blocks (Binding)

1 1/2 Yards C14355 Pewter Branches

3/4 Yards C14357 Russet Keys

Backing: 2 1/4 Yards *WB605 Allspice Shabby

Pre-order the
P197-HUCKLEBERRYHARVEST
Quilt Pattern



*Wide Back measurement is shown using the best use of fabric and may not be intended for directional Wide Back fabric.

* **Approximate** fabric requirements are listed to aid in estimating the amount of yardage to order and are subject to change. The projects portrayed are virtual images. The look of the projects may differ when using actual fabric. The quilt virtual shown on this page may be different than the image shown on the pattern cover.

Ode to Betsy by Karen Walker



Quilt Size 66" x 82"

Fabric Requirements

- 1 5/8 Yards C14350 Oatmeal Main
- 2 Yards C14351 Mahogany Wreaths
- 1/2 Yard C14351 Oxford Wreaths
- 1/4 Yard C14352 Mahogany Tile
- 1 Yard C14352 Oxford Tile (Includes Binding)
- 1 1/2 Yards C14355 Oatmeal Branches
- Backing: 2 1/4 Yards *WB605 Allspice Shabby

Pre-order the
P197-ODETOBETSY
Quilt Pattern



*Wide Back measurement is shown using the best use of fabric and may not be intended for directional Wide Back fabric.

Robbin Bobbin by Karen Walker



Quilt Size 48" x 48"

Fabric Requirements

- 1 Yard C14350 Oatmeal Main
- 1/6 Yard C14351 Mahogany Wreaths
- 1/4 Yard C14352 Brown Tile
- 1/4 Yard C14353 Brown Blocks
- 2/3 Yard C14353 Oxford Blocks (Includes Binding)
- 1/4 Yard C14354 Stone Doorknobs
- 3/8 Yard C14355 Oatmeal Branches
- 1/3 Yard C14355 Taupe Branches
- 3/4 Yard C14356 Almond Sprigs
- 1/8 Yard C14357 Russet Keys
- Backing: 1 1/2 Yards *WB645 Beach on Cream Dapple Dot

Pre-order the
P197-ROBBINBOBBIN
Quilt Pattern



*Wide Back measurement is shown using the best use of fabric and may not be intended for directional Wide Back fabric.

* **Approximate** fabric requirements are listed to aid in estimating the amount of yardage to order and are subject to change.
The projects portrayed are virtual images. The look of the projects may differ when using actual fabric.
The quilt virtual shown on this page may be different than the image shown on the pattern cover.

Saltbox Wall Hanging by The RBD Designers



Wall Hanging Size 32" x 32"

Fabric Requirements

10" Square of Each:

C14351 Mahogany Wreaths
C14352 Mahogany Tile
C14353 Brown Blocks
C14354 Stone Doorknobs
C14356 Stone Sprigs
C14357 Mahogany Keys

1/2 Yard of Each:

C14350 Independence Main
1/2 Yard C14352 Brown Tile (includes binding)

1/4 Yard of Each:

C14355 Oatmeal Branches
C14356 Almond Sprigs
C14356 Wine Sprigs

1/8 Yard of Each:

C14354 Mahogany Doorknobs
C14355 Pewter Branches
C14357 Russet Keys

Free Pattern will be available at:
www.rileyblakedesigns.com/free-quilt-patterns

* **Approximate** fabric requirements are listed to aid in estimating the amount of yardage to order and are subject to change. The projects portrayed are virtual images. The look of the projects may differ when using actual fabric. The quilt virtual shown on this page may be different than the image shown on the pattern cover.



C14350 Oatmeal Main

Shown as Repeat 44" x 36"



About the Line and Designer

Huckleberry Saltbox is inspired by a love of yesteryear and family. Homes that stand the test of time, filled with joy. The keys and doorknobs unlock a reminiscence of merriment and kindness as loved ones wander along the river's edge where huckleberries flourish.

Karen made her first quilt alongside her Grandma Cora when she was 12 years old. It wasn't until her first son was born 19 years later, that she made her second quilt using the same skill set she had learned from her grandmother...a pair of scissors and templates. Little did she know there were all kinds of new quilting tools and techniques! Karen has been designing folk art style quilts since 2013, and many have been featured in magazine publications and catalogs.

You'll find her patterns, tutorials, and blog happenings at laughyourselfintostitches.com

When she is not quilting, she loves to host weekly family dinners and finds her inspiration through gatherings on the family farm.

NEW DESIGNER

Karen Walker

@laughyourselfintostitches

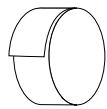
Precuts



FFYD-14350



Flat Fold Bundle
25 Yards



RP-14350-40



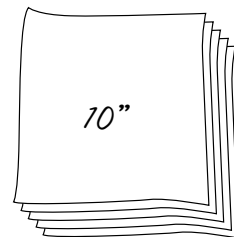
Rolie Polie
40 Pieces



5-14350-42



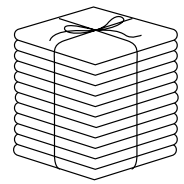
5-Inch Stacker
42 Pieces



10-14350-42



10-Inch Stacker
42 Pieces



FQ-14350-24



Fat Quarter Bundle
24 Pieces

Pre-Order Only

ADD ANY LAMINATE WITH 100 YARDS MINIMUM



1YD-14350B-8



Brown - 1-Yard Bundle
8 Pieces



1YD-14350I-8



Independence - 1-Yard Bundle
8 Pieces



1YD-14350O-8



Oatmeal - 1-Yard Bundle
8 Pieces

CP10-14350-24



10-Yard Case Pack

CP15-14350-24



15-Yard Case Pack

Available January 2024 Last Call August 1, 2023

100% FINE COTTON 43/44" WIDE • MACHINE WASH COLD • NO CHLORINE BLEACH • TUMBLE DRY LOW • REMOVE PROMPTLY

RILEY BLAKE DESIGNS • 9646 SOUTH 500 WEST, SANDY, UTAH 84070 • TOLL FREE 1.888.768.8454 • TEL 801.816.0540 • WWW.RILEYBLAKEDESIGNS.COM

NOT INTENDED FOR CHILDREN'S SLEEPWEAR

©2023 RILEY BLAKE DESIGNS AND KAREN WALKER

MADE IN KOREA