



Riley Blake  
DESIGNS™

INTRODUCES



In the **A**fterglow

MINKI KIM



AVAILABLE JUNE 2023  
*Last Call*  
Jan 1, 2023  
R-5



**C13370-MIDNIGHT**



8 89333 30331 2

Midnight In the Afterglow Main



**C13371-MIDNIGHT**



8 89333 30335 0

Midnight In the Afterglow Floral



**C13372-STONE**



8 89333 30338 1

Stone In the Afterglow Bouquet



**C13373-MIDNIGHT**



8 89333 30340 4

Midnight In the Afterglow Gingham



**C13374-MIDNIGHT**



8 89333 30344 2

Midnight In the Afterglow Spiral



**C13375-STONE**



8 89333 30347 3

Stone In the Afterglow Daisies

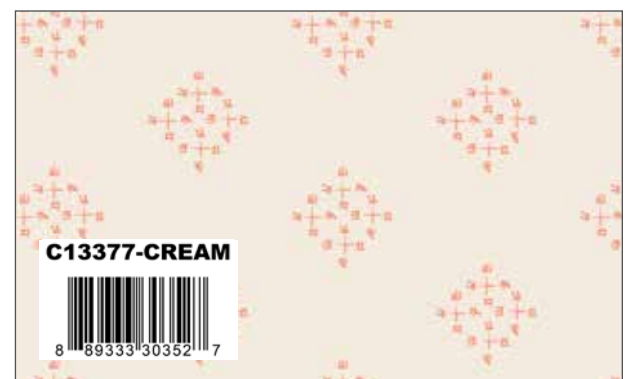


**C13376-MIDNIGHT**



8 89333 30348 0

Midnight In the Afterglow Flowerbed



**C13377-CREAM**



8 89333 30352 7

Cream In the Afterglow Criss-Cross



**C665-LIPSTICK**



8 89333 26967 0

Lipstick Dainty Daisy



**C610-BLUSH**



8 89333 23624 5

Blush Texture



**C715-APRICOTBLUSH**



8 89333 12151 0

Apricot Blush Blossom



**C747-PEBBLE**



8 89333 19286 2

Pebble Bee Cross Stitch Reversed



**C13370-ORCHID**



Orchid In the Afterglow Main



**C13371-FUCHSIA**



Fuchsia In the Afterglow Floral



**C13372-SHELL**



Shell In the Afterglow Bouquet



**C13373-APRICOT**



Apricot In the Afterglow Gingham



**C13374-DUSTYROSE**



Dusty Rose In the Afterglow Spiral



**C13375-CREAM**



Cream In the Afterglow Daisies



**C13376-PINK**



Pink In the Afterglow Flowerbed



**C13377-APRICOT**



Apricot In the Afterglow Criss-Cross



**C640-MARMALADE**



Marmalade Dapple Dot



**C610-SHELL**



Shell Texture



**C725-CREAM**



Cream Tone-on-Tone Blossom



**C605-PLUM**



Plum Shabby



**C13370-FOREST**



Forest In the Afterglow Main



**C13371-CREAM**



Cream In the Afterglow Floral



**C13372-BLUSH**



Blush In the Afterglow Bouquet



**C13373-MINT**



Mint In the Afterglow Gingham



**C13374-CREAM**



Cream In the Afterglow Spiral



**C13375-MINT**



Mint In the Afterglow Daisies



**C13376-MINT**



Mint In the Afterglow Flowerbed



**C13377-MINT**



Mint In the Afterglow Criss-Cross



**C715-PEACHESCREAM**



Peaches 'n Cream Blossom



**C650-CREAM**



Cream Dapple Dot



**SC650-ALPINE**



Alpine Sparkler

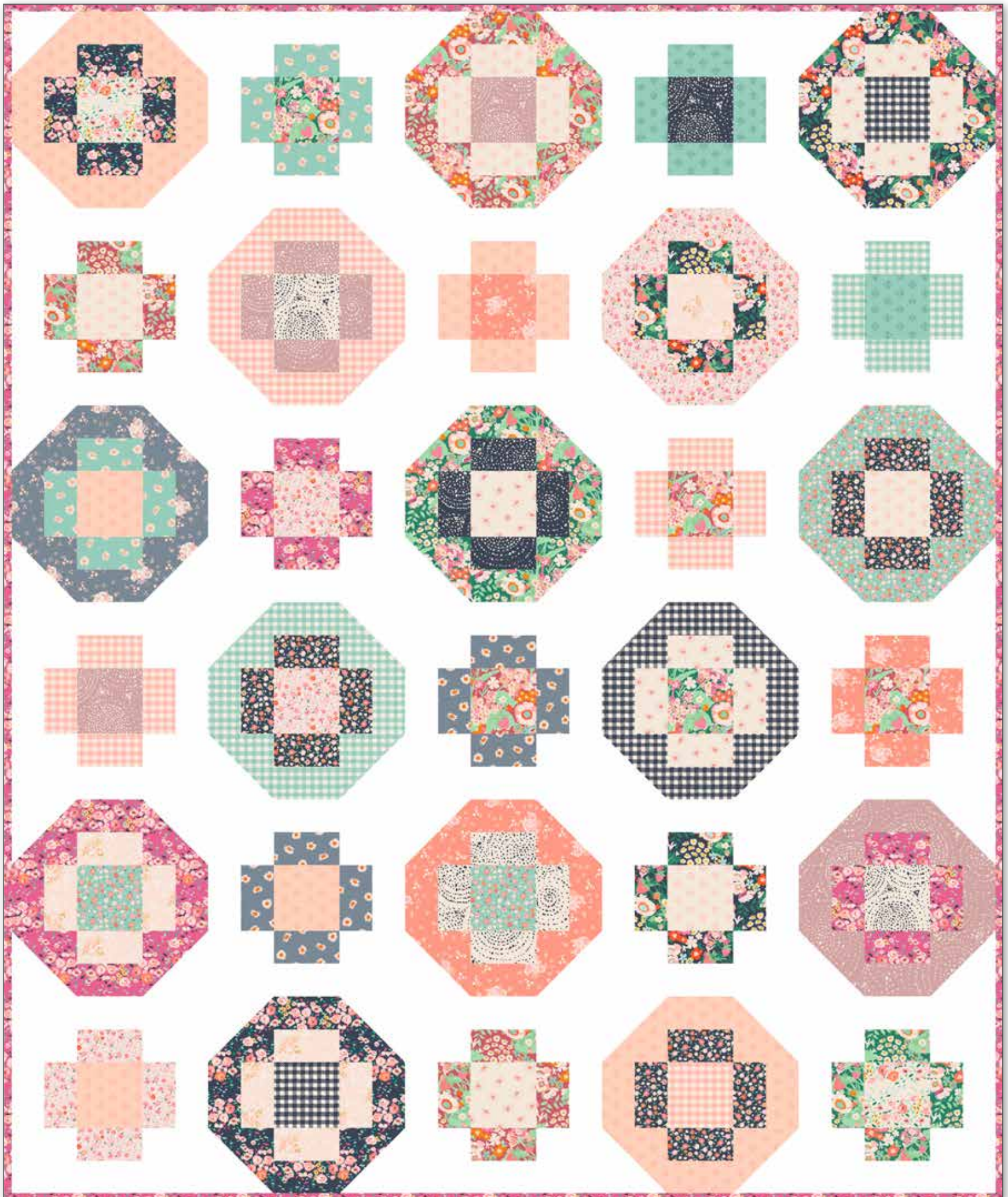


**C665-ALPINE**



Alpine Dainty Daisy

## Across the Way by Minki Kim



Quilt Size 60½" x 72½"

### Fabric Requirements

1 FQ-13370-24 In the Afterglow Fat Quarter Bundle

2 1/8 Yards C120 Riley White Solid

2/3 Yard C13371 Fuchsia Floral (Binding)



Pre-order the  
P178-ACROSSTHEWAY  
Quilt Pattern

\* **Approximate** fabric requirements are listed to aid in estimating the amount of yardage to order and are **subject to change**.  
The projects portrayed are virtual images. The look of the projects may differ when using actual fabric.  
The quilt virtual shown on this page may be different than the image shown on the pattern cover.

*In the Afterglow* by Minki Kim



Quilt Size 60½" x 72½"

### Fabric Requirements

1 FQ-13370-24 In the Afterglow Fat Quarter Bundle

2 1/8 Yards C120 Riley White Solid

2/3 Yard C13373 Midnight Gingham (Binding)

Free Pattern will be available at:  
[www.rileyblakedesigns.com/free-quilt-patterns](http://www.rileyblakedesigns.com/free-quilt-patterns)

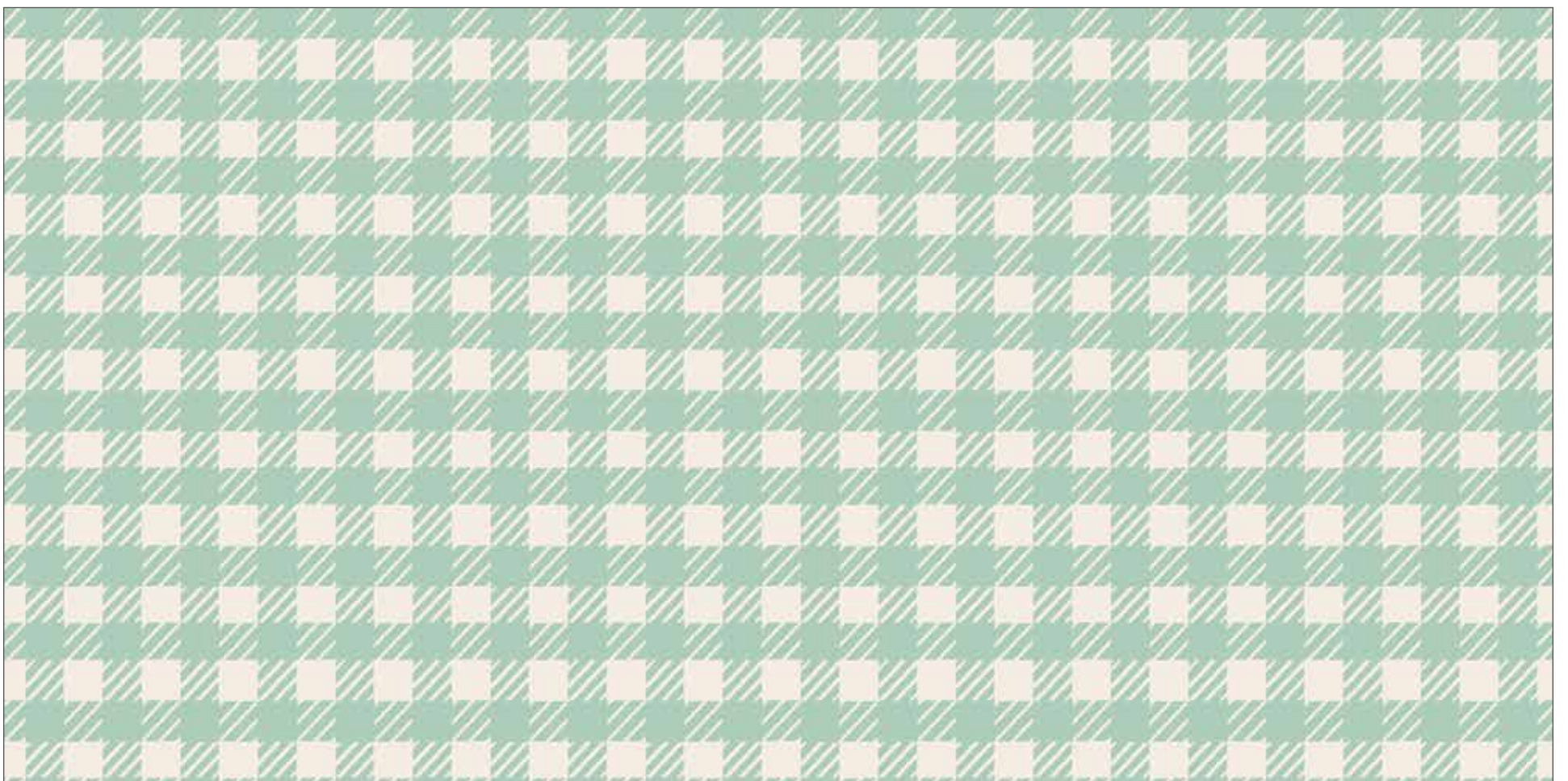
\* **Approximate** fabric requirements are listed to aid in estimating the amount of yardage to order and are **subject to change**.  
The projects portrayed are virtual images. The look of the projects may differ when using actual fabric.  
The quilt virtual shown on this page may be different than the image shown on the pattern cover.



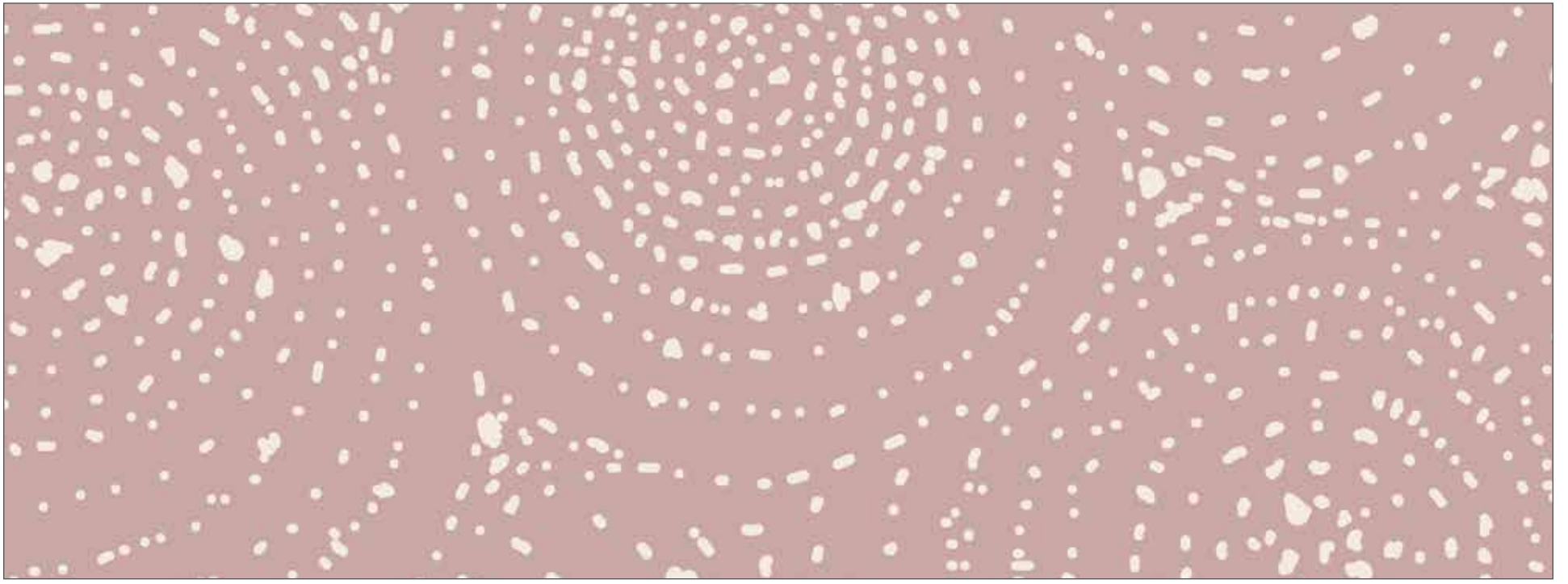
C13371 Midnight In the Afterglow Floral



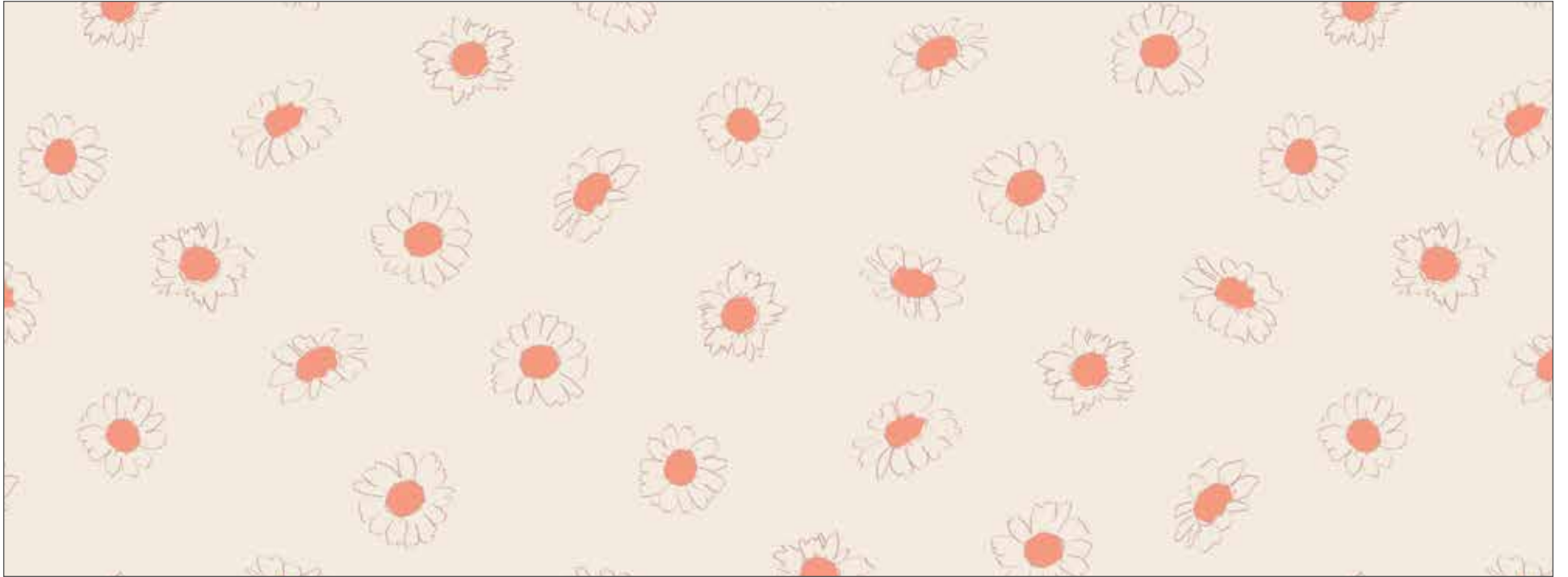
C13372 Blush In the Afterglow Bouquet



C13373 Mint In the Afterglow Gingham



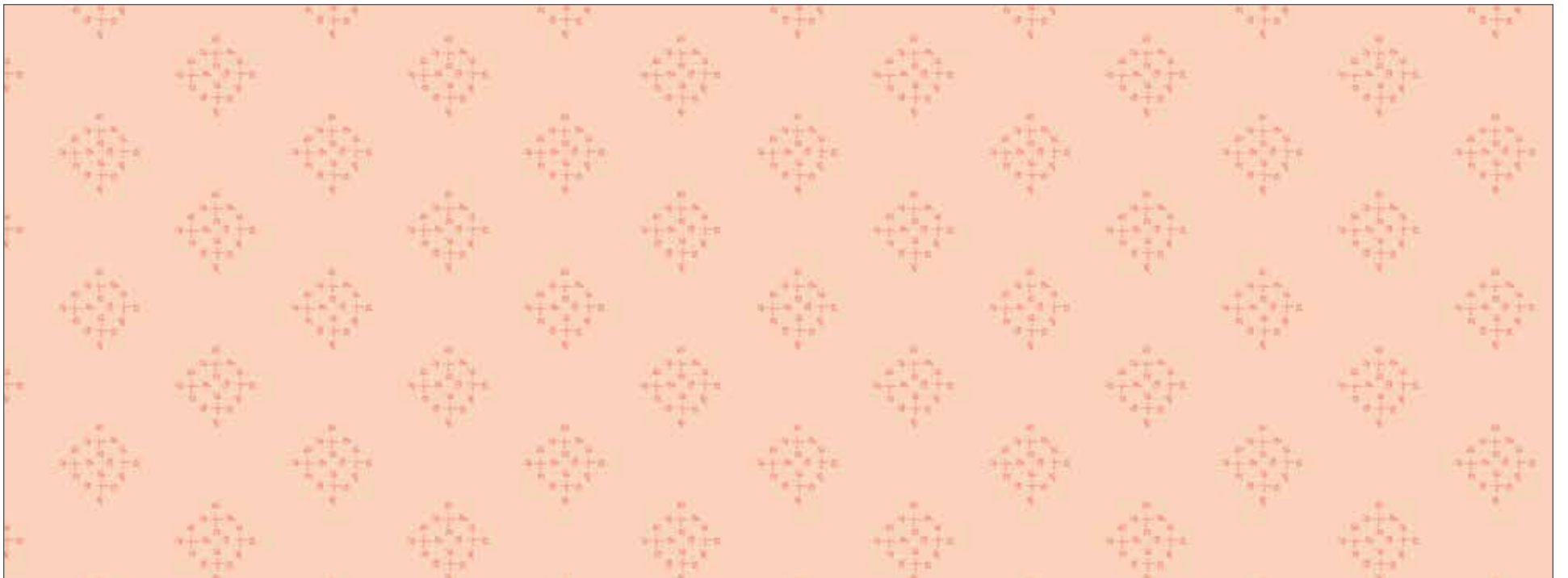
C13374 Dusty Rose In the Afterglow Spiral



C13375 Cream In the Afterglow Daisies



C13376 Midnight In the Afterglow Flowerbed



C13377 Apricot In the Afterglow Criss-Cross





C13370 Midnight In the Afterglow Main

Shown as Repeat 44" x 36"

## About the Line



Minki Kim  
@zeriano

Close your eyes and imagine yourself watching the sunset slowly disappearing across the sky. *In the Afterglow* by Minki Kim captures the feeling, light, and radiance of those breathtaking sunsets in her latest designer fabric collection. Warm and cool tone colors like apricot, dusty rose, mint, forest, stone, and midnight enhance Minki's beautiful prints. This delicate floral collection also features geometric coordinating prints. The two quilt patterns, *In the Afterglow* and *Across the Way* encapsulate the meaning behind this must-have collection.

### PRECUTS

Flat Fold Bundle  
25 Yards

**FFYD-13370**



8 89333 30363 3

5-Inch Stacker  
42 Pieces



**5-13370-42**



8 89333 30355 8

10-Inch Stacker  
42 Pieces



**10-13370-42**



8 89333 30354 1

Rolie Polie  
40 Pieces

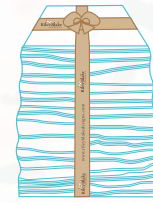


**RP-13370-40**



8 89333 30356 5

Fat Quarter



**FQ-13370-24**



8 89333 30357 2

### PRE-ORDER ONLY

ADD ANY LAMINATE WITH 100 YARDS MINIMUM

10-Yard Case Pack

**CP10-13370-24**



8 89333 30358 9

Forest - 1 Yard Bundle  
8 Pieces

**1YD-13370F-8**



8 89333 30360 2

Midnight - 1 Yard Bundle  
8 Pieces

**1YD-13370M-8**



8 89333 30361 9

15-Yard Case Pack

**CP15-13370-24**



8 89333 30359 6

Orchid - 1 Yard Bundle  
8 Pieces

**1YD-13370O-8**



8 89333 30362 6

AVAILABLE JUNE 2023 – LAST CALL JANUARY 1, 2023

100% FINE COTTON 43/44" WIDE • MACHINE WASH COLD • NO CHLORINE BLEACH • TUMBLE DRY LOW • REMOVE PROMPTLY

Riley Blake Designs • 9646 South 500 West, Sandy, Utah 84070

Toll Free 1.888.768.8454 • Tel 801.816.0540

www.rileyblakedesigns.com

Not intended for children's sleepwear

©2022 Riley Blake Designs and Minki Kim

MADE IN KOREA