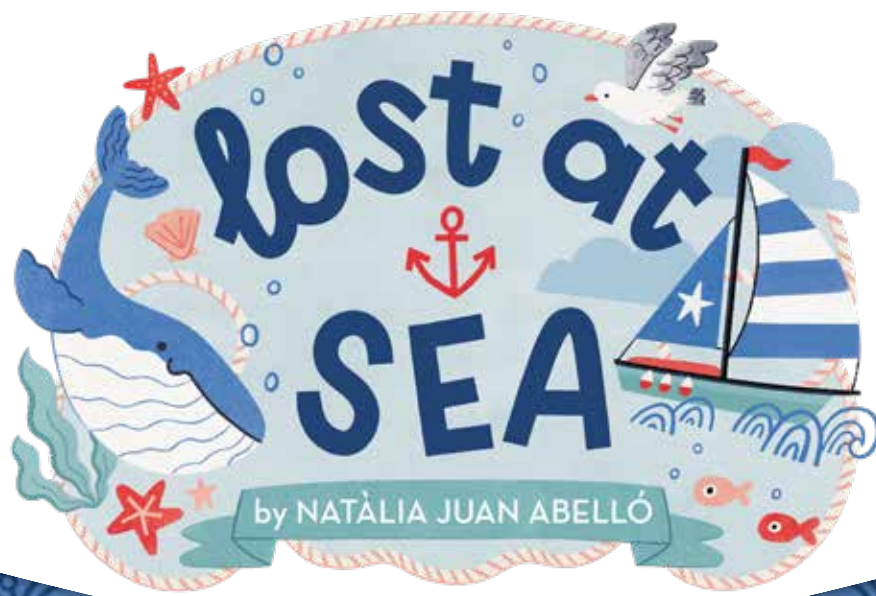



Riley Blake
DESIGNS

INTRODUCES



AVAILABLE MAY 2023
Last Call
Dec 1, 2022
R-5



Navy Lost at Sea Main



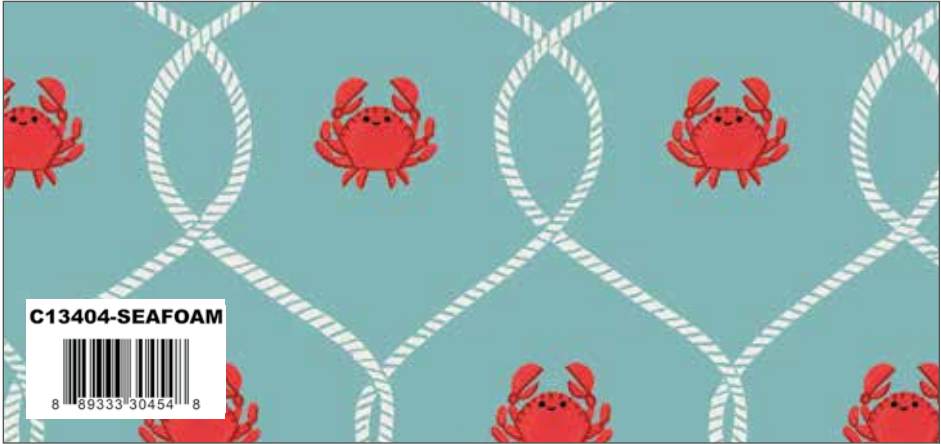
Sky Lost at Sea Seagulls Flight



Azure Lost at Sea Whales



Azure Lost at Sea Set Sail



Seafoam Lost at Sea Happy Crabs



Sky Lost at Sea Starfish and Anchors



Sky Lost at Sea Waves



Nighttime Shabby



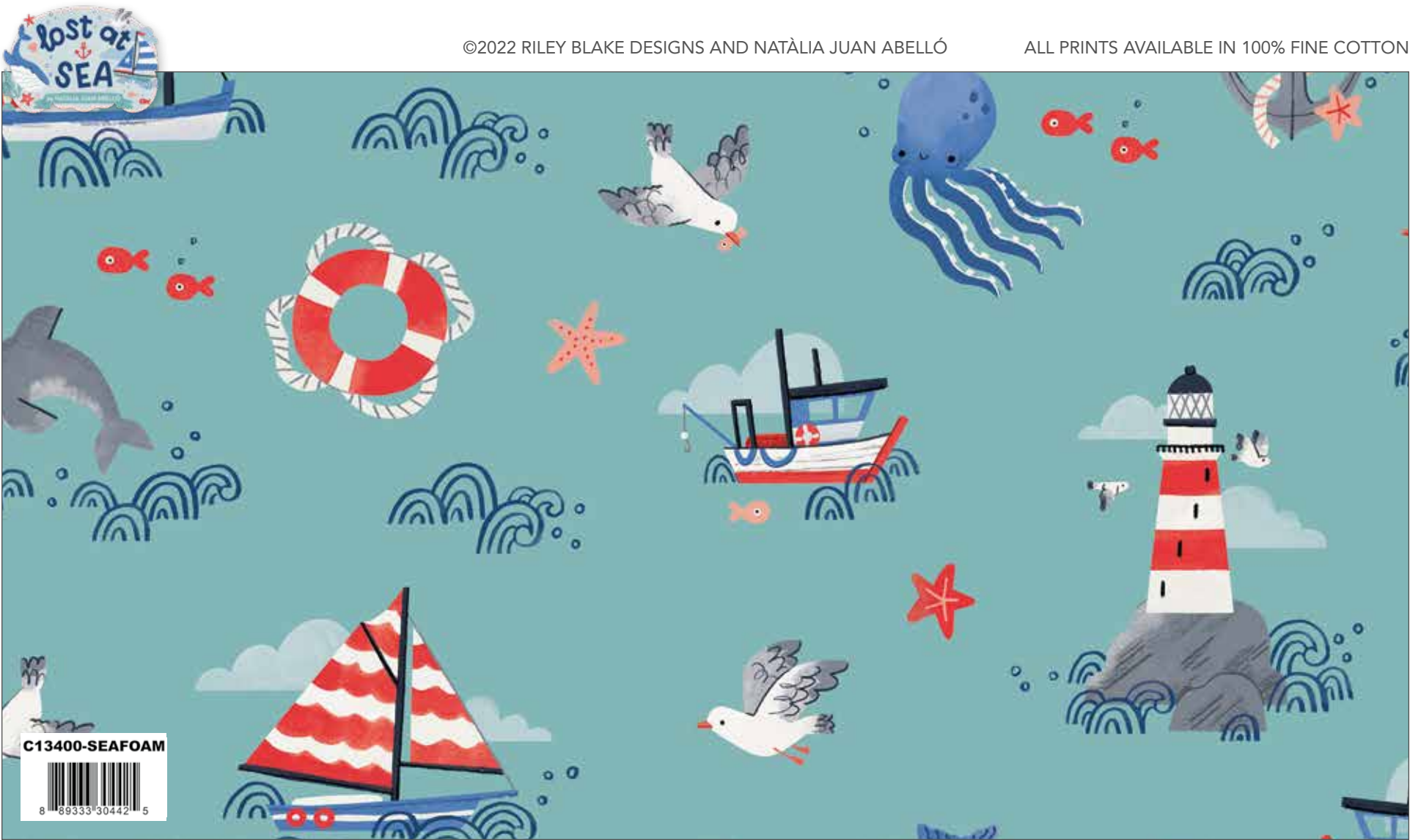
Denim Texture



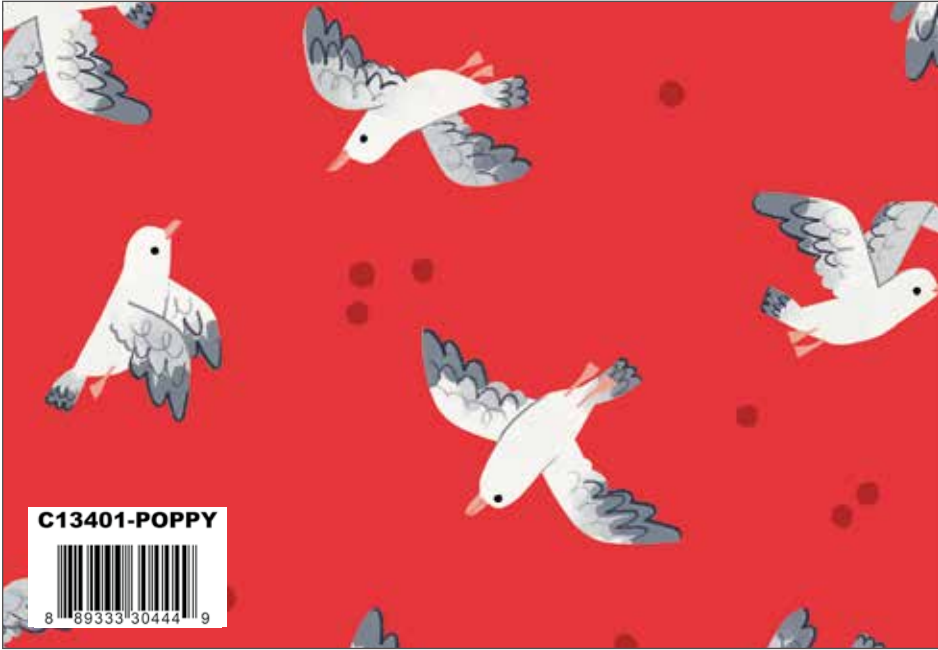
Denim Gunny Sack



Cornflower Solid



Seafoam Lost at Sea Main



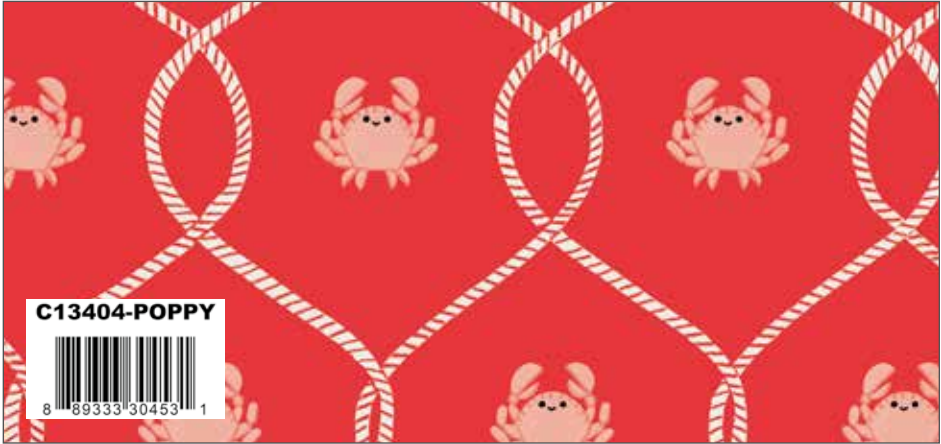
Poppy Lost at Sea Seagulls Flight



Off White Lost at Sea Whales



Off White Lost at Sea Set Sail



Poppy Lost at Sea Happy Crabs



Navy Lost at Sea Starfish and Anchors



Azure Lost at Sea Waves



Cherry Shabby



Red Kisses



Navy Texture



Scuba Solid



Arctic Lost at Sea Main



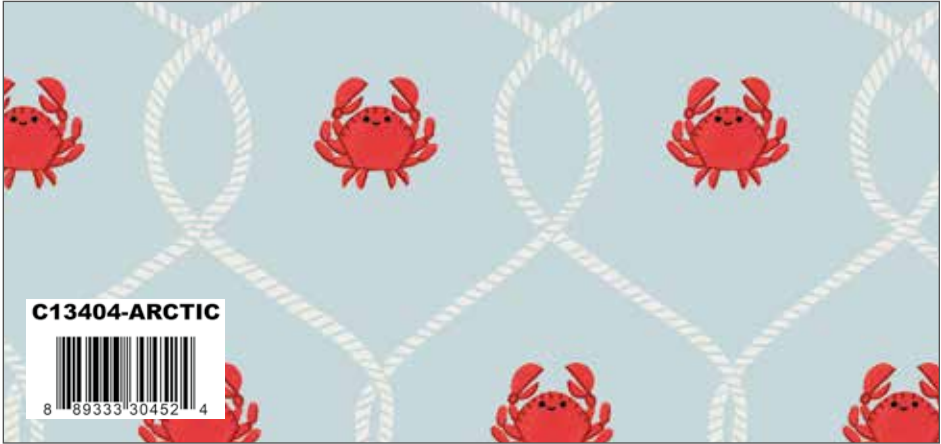
Azure Lost at Sea Seagulls Flight



Seafoam Lost at Sea Whales



Navy Lost at Sea Set Sail



Arctic Lost at Sea Happy Crabs



Poppy Lost at Sea Starfish and Anchors



Seafoam Lost at Sea Waves



Seaglass Bee Cross Stitch



Julep Texture



Medium Blue Kisses



Red Painter's Watercolor Swirl



You, Me and the Sea Panel



You, Me and the Sea Panel (10 panels per bolt)
Scaled to 28% | Actual Size is 36" x 43½"





You, Me and the Sea Panel Quilt by The RBD Designers



Quilt Size 64” x 64”

Fabric Requirements

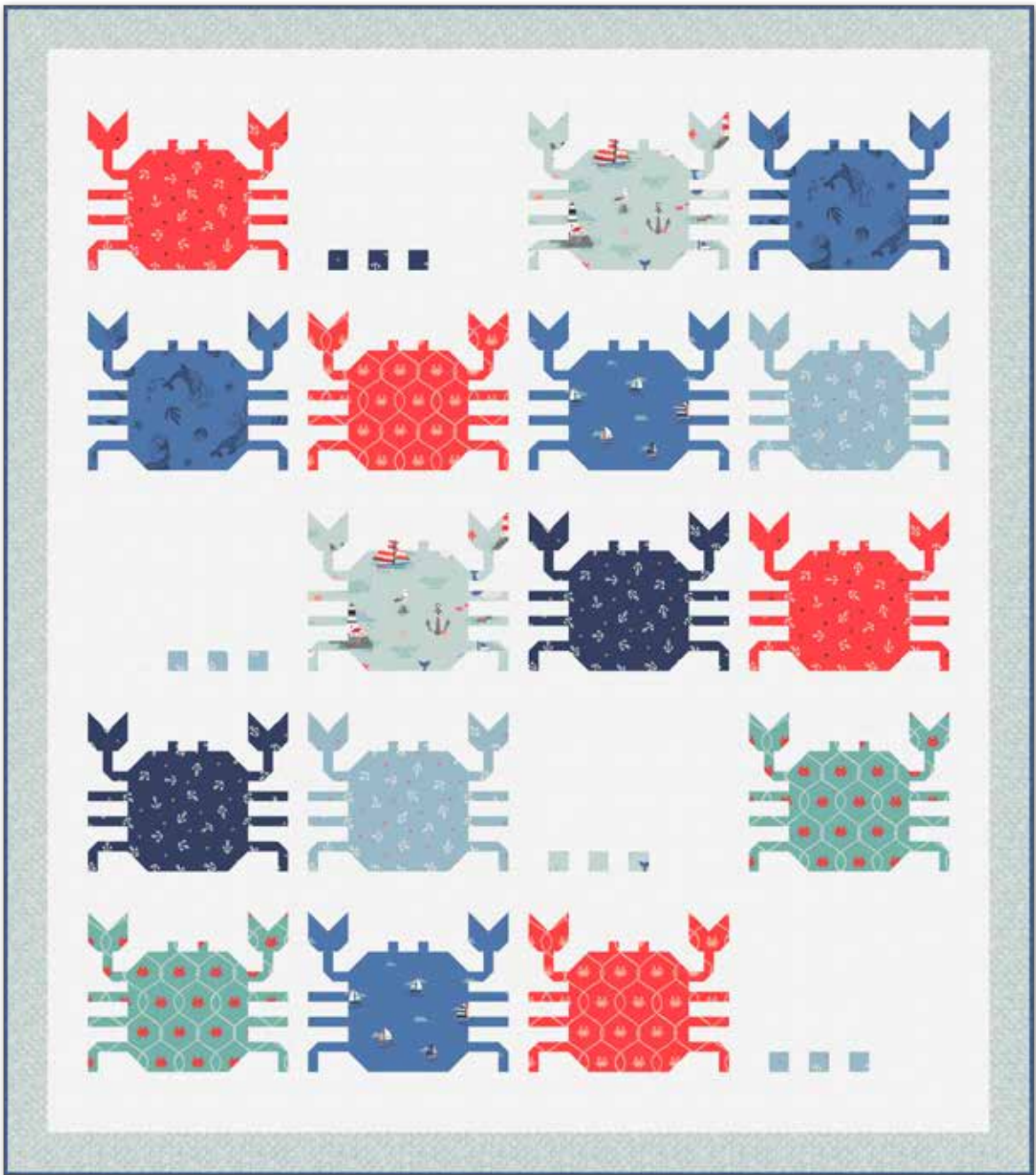
- 1 P13407 You, Me and the Sea Panel
- 1 Yard C13403 Navy Set Sail
- 3/4 Yard C13406 Seafoam Waves (Includes Binding)
- 1 Yard C6384 Blue Tiny Circles (Bee Backgrounds)
- Fat Quarter of Each:**
 - C13400 Navy Main
 - C13401 Poppy Seagulls Flight
 - C13402 Seafoam Whales
 - C13404 Seafoam Happy Crabs
 - C13405 Navy Starfish and Anchors

Free Pattern will be available at:
www.rileyblakedesigns.com/free-quilt-patterns

* **Approximate** fabric requirements are listed to aid in estimating the amount of yardage to order and are **subject to change**.
The projects portrayed are virtual images. The look of the projects may differ when using actual fabric.



Feeling Crabby by Wendy Sheppard



Quilt Size 51" x 58"

Fabric Requirements

- 5/8 Yard C13406 Azure Waves (Binding)
- 1/2 Yard C13406 Sky Waves
- 2 3/8 Yards C610 White Texture
- Fat Quarter of Each:**
 - C13400 Arctic Main
 - C13402 Azure Whales
 - C13403 Azure Set Sail
 - C13404 Poppy Happy Crabs
 - C13404 Seafoam Happy Crabs
 - C13405 Navy Starfish and Anchors
 - C13405 Poppy Starfish and Anchors
 - C13405 Sky Starfish and Anchors

Pre-order the
P180-FEELINGCRABBY
Quilt Pattern



Sail Away by Amanda Niederhauser



Quilt Size 70" x 70"

Fabric Requirements

- 1 10-13400-42 Lost at Sea 10-Inch Stacker
- 1 1/3 Yards C13400 Navy Main
- 1 1/3 Yards C13406 Sky Waves
- 1 1/2 Yards C120 Riley White Solid
- 2/3 Yard Binding

Pre-order the
P156-SAILAWAY
Quilt Pattern



* **Approximate** fabric requirements are listed to aid in estimating the amount of yardage to order and are **subject to change**.
The projects portrayed are virtual images. The look of the projects may differ when using actual fabric.
The quilt virtual shown on this page may be different than the image shown on the pattern cover.



C13401 Azure Lost at Sea Seagulls Flight



C13402 Seafoam Lost at Sea Whales



C13403 Navy Lost at Sea Set Sail



C13400 Navy Lost at Sea Main

Shown as Repeat 44" x 36"



About the Line



Natàlia Juan Abelló
@nat.juan

“The sea, once it casts its spell, holds one in its net of wonder forever.”
– Jacques Cousteau.

Natàlia Juan Abelló’s designer fabric collection, *Lost at Sea* is charming and swimmingly cute! From those happy little crabs to whales, sailboats, and friendly waves, this collection is sure to delight and inspire! Submerge yourself in the poppy, seafoam, sky, azure, and navy color palette. Get ready and drop your anchor into creative quilt, home décor, and apparel projects.



PRECUTS

Flat Fold Bundle
25 Yards

FFYD-13400



8 89333 30471 5

5-Inch Stacker
42 Pieces



5-13400-42



8 89333 30463 0

10-Inch Stacker
42 Pieces



10-13400-42



8 89333 30462 3

Rolie Polie
40 Pieces

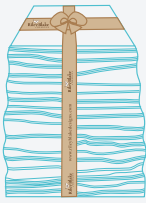


RP-13400-40



8 89333 30464 7

Fat Quarter



FQ-13400-21



8 89333 30465 4

PRE-ORDER ONLY

ADD ANY LAMINATE WITH 100 YARDS MINIMUM
PANEL IS INCLUDED IN CASE PACKS

10-Yard Case Pack

CP10-13400-22



8 89333 30466 1

15-Yard Case Pack

CP15-13400-22



8 89333 30467 8

Arctic - 1 Yard Bundle
8 Pieces

1YD-13400A-8



8 89333 30468 5

Navy - 1 Yard Bundle
8 Pieces

1YD-13400N-8



8 89333 30469 2

Seafoam - 1 Yard Bundle
8 Pieces

1YD-13400S-8



8 89333 30470 8

AVAILABLE MAY 2023 – LAST CALL DECEMBER 1, 2022

100% FINE COTTON 43/44" WIDE • MACHINE WASH COLD • NO CHLORINE BLEACH • TUMBLE DRY LOW • REMOVE PROMPTLY

Riley Blake Designs • 9646 South 500 West, Sandy, Utah 84070

Toll Free 1.888.768.8454 • Tel 801.816.0540 • Fax 801.816.0542

www.rileyblakedesigns.com

Not intended for children’s sleepwear

©2022 Riley Blake Designs and Natàlia Juan Abelló

MADE IN KOREA