

Mountain High



Expressions
Batiks by Riley Blake Designs™

RELEASE 5 2023
AVAILABLE JUNE 2024 | LAST CALL JANUARY 1, 2024



BTHH1313



BTHH1313 Stone



BTHH1314



BTHH1314 Rice



BTHH1315



BTHH1315 Straw



BTHH1316



BTHH1316 Gold



BTHH1317



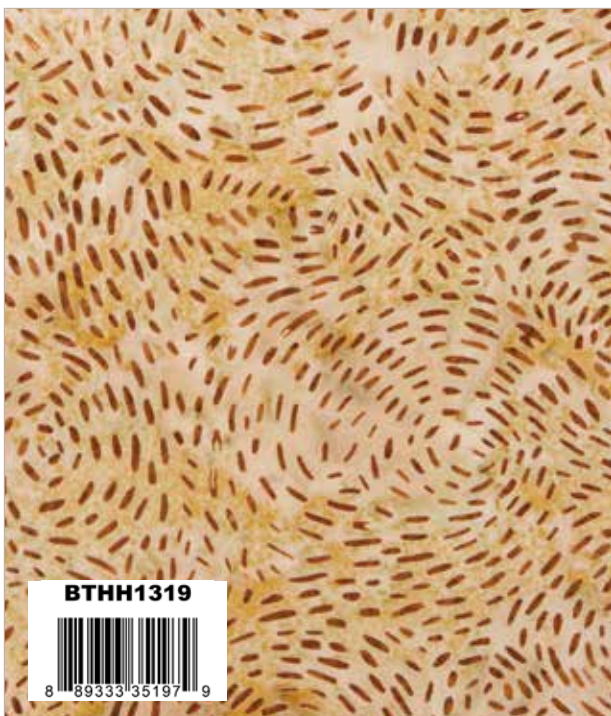
BTHH 1317 Grain



BTHH1318



BTHH1318 Wheat



BTHH1319



BTHH1319 Raffia



BTHH1320



BTHH1320 Aspen



BTHH1321



BTHH1321 Amber



BTHH1322 Bayern



BTHH1323 Yonder



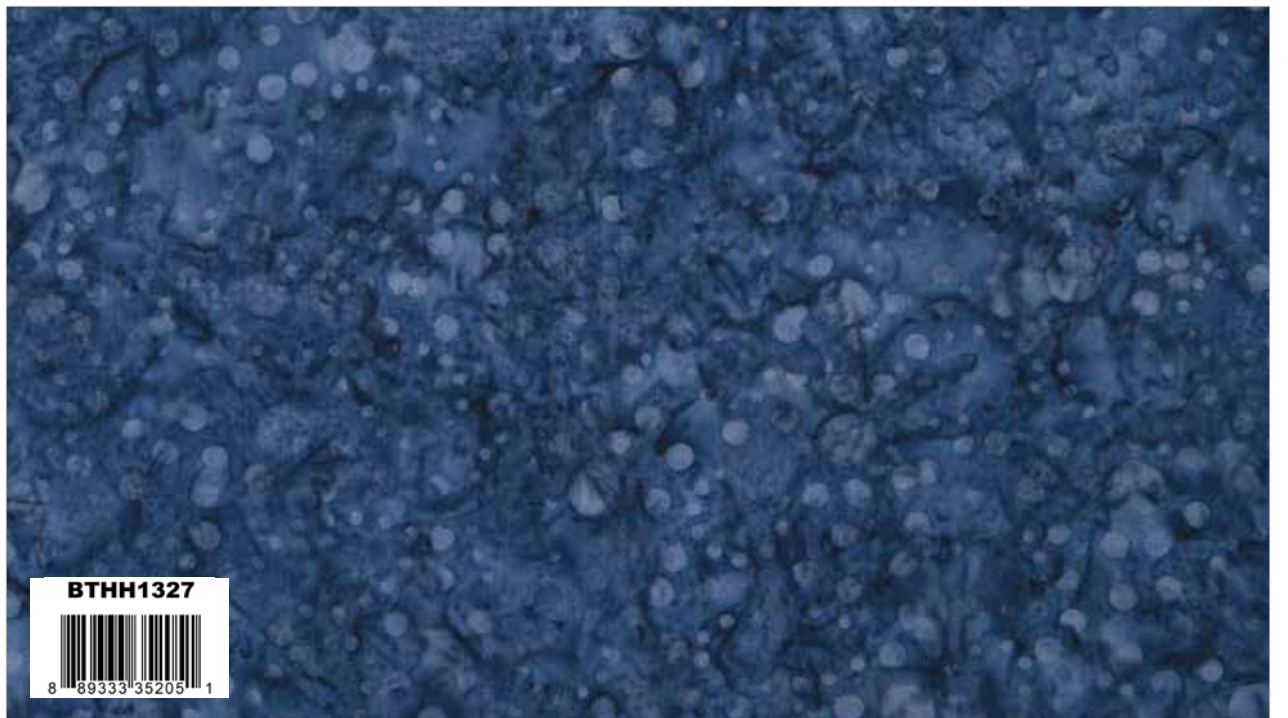
BTHH1324 Haze



BTHH1325 Chelsey



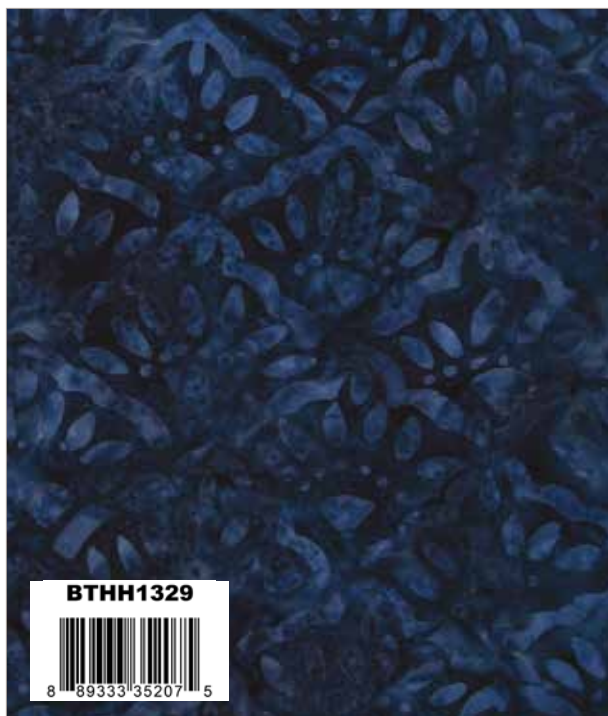
BTHH1326 Storm



BTHH1327 Delft



BTHH1328 Dungaree



BTHH1329 Glaucous



BTHH1330 Millennium

Mountain Lodge by Charisma Horton



Quilt Size 54" x 72"

estimated requirements

Fat 1/4 of Each	BTHH1325 Chelsey
BTHH1330 Millenium	BTHH1319 Raffia
BTHH1315 Straw	BTHH1320 Aspen
BTHH1324 Haze	BTHH1328 Dungaree
BTHH1329 Glaucous	Additional Fabrics
BTHH1323 Yonder	3 Yards BTHH1314 Rice
BTHH1322 Bayern	2/3 Yard BTHH1327 Delft (Binding)
BTHH1326 Storm	2 1/4 Yards BTWB179 Dark Blue (Backing)



Pre-order the
P161-MTNLODGE
Quilt Pattern



Winter Mountains by Charisma Horton



Quilt Size 72" x 84"

estimated requirements

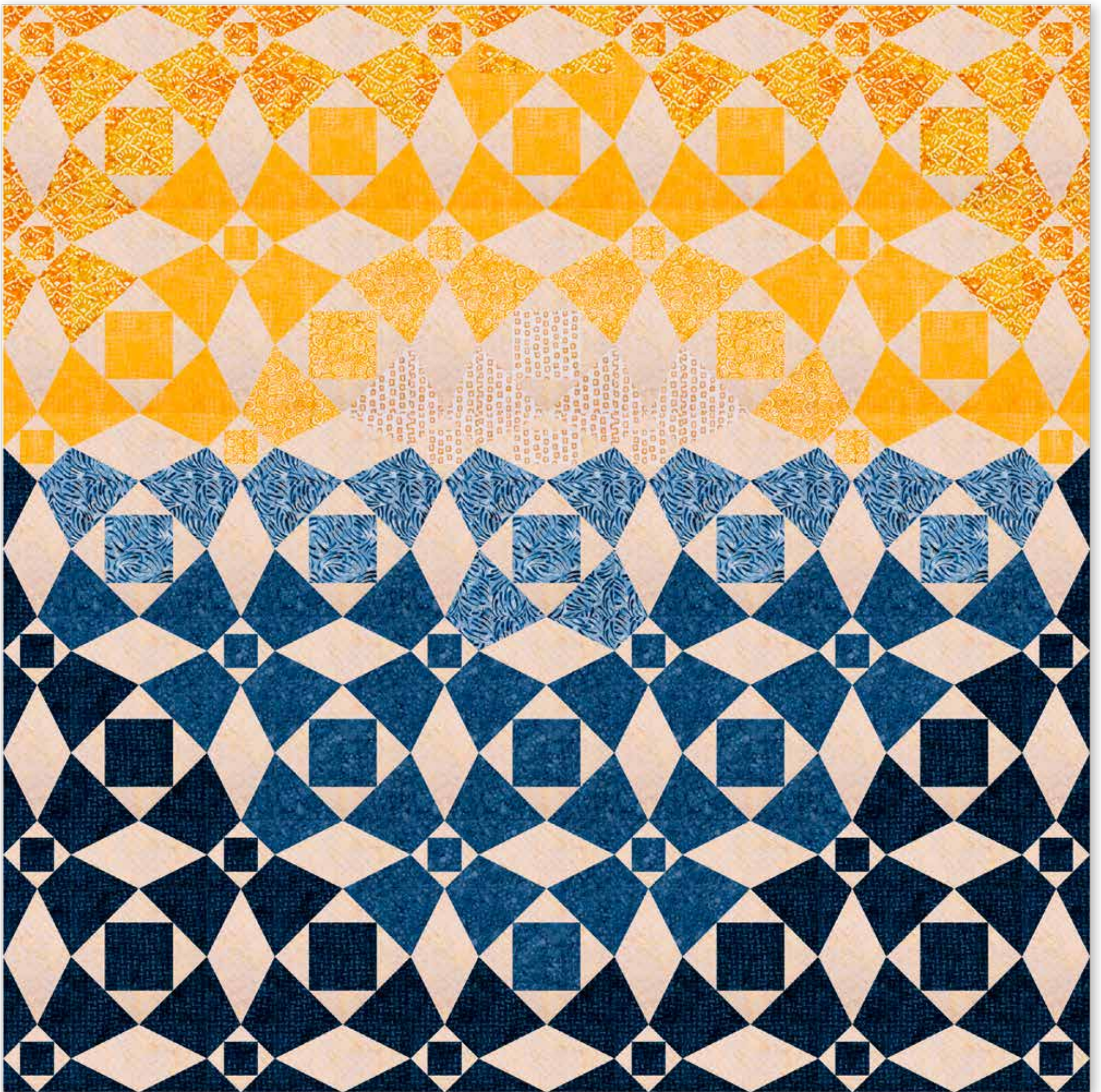
- 1/3 Yard BTHH1321 Amber
- 1 1/4 Yards BTHH1327 Delft
- 1 1/2 Yards BTHH1314 Rice
- 2 1/4 Yards BTHH1325 Chelsey
- 2 1/4 Yards BTHH1326 Storm
- 3/4 Yards BTHH1330 Millenium (Binding)
- 2 1/4 Yards BTWB142 Dijon (Backing)



Pre-order the
P161-WINTERMTNS
Quilt Pattern



Sunset at Sea by Ashley Hough



Quilt Size 72" x 72"

estimated requirements

1/2 Yard of Each

BTHH1313 Stone
BTHH1318 Wheat

1 Yard of Each

BTHH1316 Gold
BTHH1326 Amber
BTHH1327 Delft

Additional Fabrics

3/4 Yard BTHH1326 Storm
1 1/4 Yards BTHH1325 Chelsey
2 1/2 Yards BTHH1314 Rice
5/8 Yard BTHH1325 Chelsey (Binding)
2 1/4 Yards WBBTWB129 Dark Blue (Backing)

Pre-order the
P199-SUNSETATSEA
Quilt Pattern





Quilt Size 68½" x 86½"

estimated requirements

- | | |
|-------------------------|---|
| 1/6 Yard of Each | 1/4 Yard of Each |
| BTHH1322 Bayern | BTHH1315 Straw |
| BTHH1327 Delft | BTHH1317 Grain |
| BTHH1329 Glaucous | BTHH1318 Wheat |
| BTHH1330 Millenium | BTHH1319 Raffia |
| 1/8 Yard of Each | BTHH1321 Amber |
| BTHH1316 Gold | Additional Fabrics |
| BTHH1320 Aspen | 5/8 Yard BTHH1323 Yonder |
| | 1 5/8 Yards BTHH1328 Dungaree |
| | 3 1/8 Yards BTHH1314 Rice (Background) |
| | 2 1/4 Yards BTWB179 Dark Blue (Backing) |

**FREE PATTERN
AVAILABLE ON OUR WEBSITE
JUNE 2024**
www.rileyblakedesigns.com

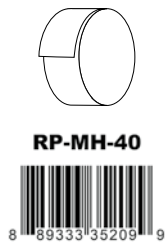


When you purchase the bolts to make Mountain High, you'll be eligible to purchase this handmade quilt top to finish and hang in your shop. Promote the collection, share your love of Expressions Batiks, and inspire your customer to use their colorful imagination to create their own handmade projects!

Pre-order the Handmade Quilt Top by February 1, 2024



precuts



RP-MH-40



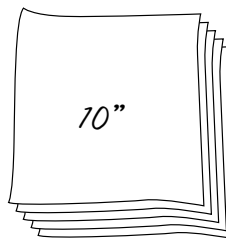
Rolie Polie
40 Pieces



5-MH-42



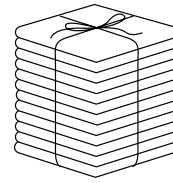
5-Inch Stacker
42 Pieces



10-MH-42



10-Inch Stacker
42 Pieces



FQ-MH-18



Fat Quarter Bundle
18 Pieces



With a serene color palette of rich yellows and deep blues, *Mountain High* will take your breath away. Your creative imagination will take you to new heights as you craft quilts, home décor, and apparel projects with this new batik collection.

Riley Blake Designs batiks are ethically sourced and made with the highest quality fabric. Each hand-dyed print is designed and developed by cultivating relationships with true batik artisans in Indonesia.

Our well-crafted batiks are produced in state-of-the-art facilities with the best Tjap designers and makers, color experts, and stamp prodigies. From conception to completion, each fabric has been meticulously designed for your creative and colorful imagination.

available June 2024 **last call January 1, 2024**

100% FINE COTTON · 43/44" WIDE · 10-YARD BOLTS · MADE IN INDONESIA



9646 South 500 West
Sandy, UT 84070
888.768.8454 · 801.816.0540
www.rileyblakedesigns.com

©2023 Riley Blake Designs

Machine Wash Cold
No Chlorine Bleach
Tumble Dry Low
Remove Promptly
Not Intended for Children's Sleepwear

The projects portrayed are virtual images. The look of the projects may differ with actual fabric.

The project virtual(s) shown may be different than the image shown on the pattern cover.

Approximate estimated requirements are listed to aid in estimating the amount of yardage to order and are subject to change.

Backing yardage is shown using the best use of fabric and may not be intended for directional fabric.