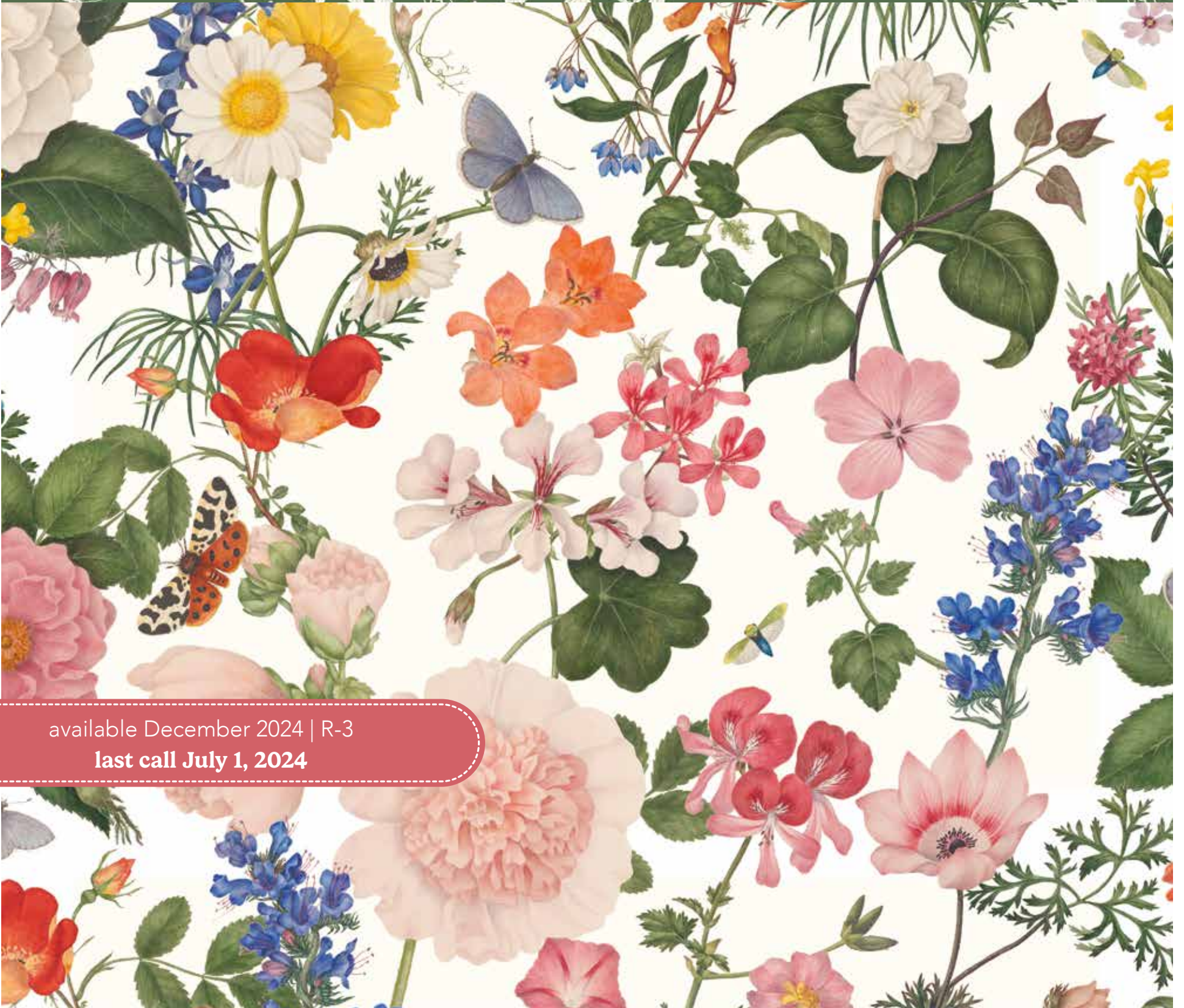
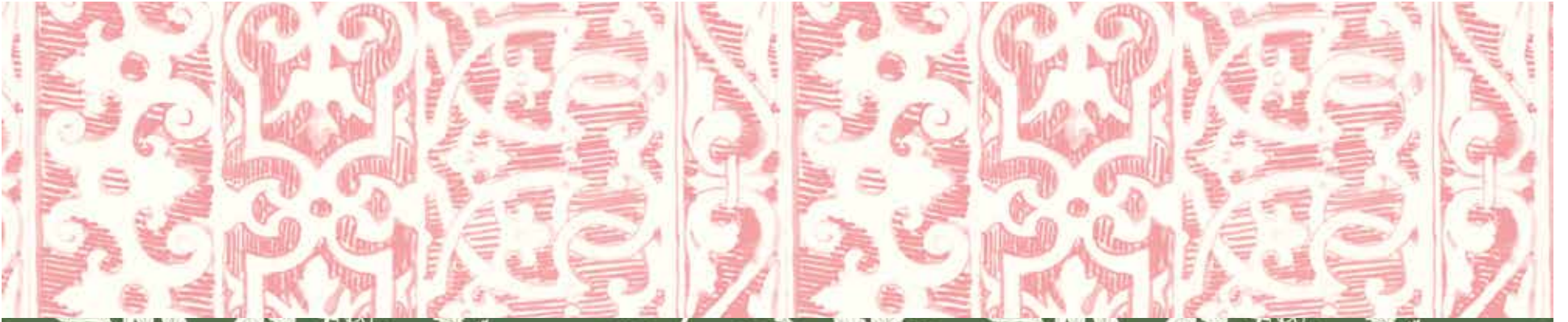




Nature's Portrait

Inspired by the Royal Horticultural Society



available December 2024 | R-3
last call July 1, 2024



CD15670-WHITE



8 89333 39212 5

White Main

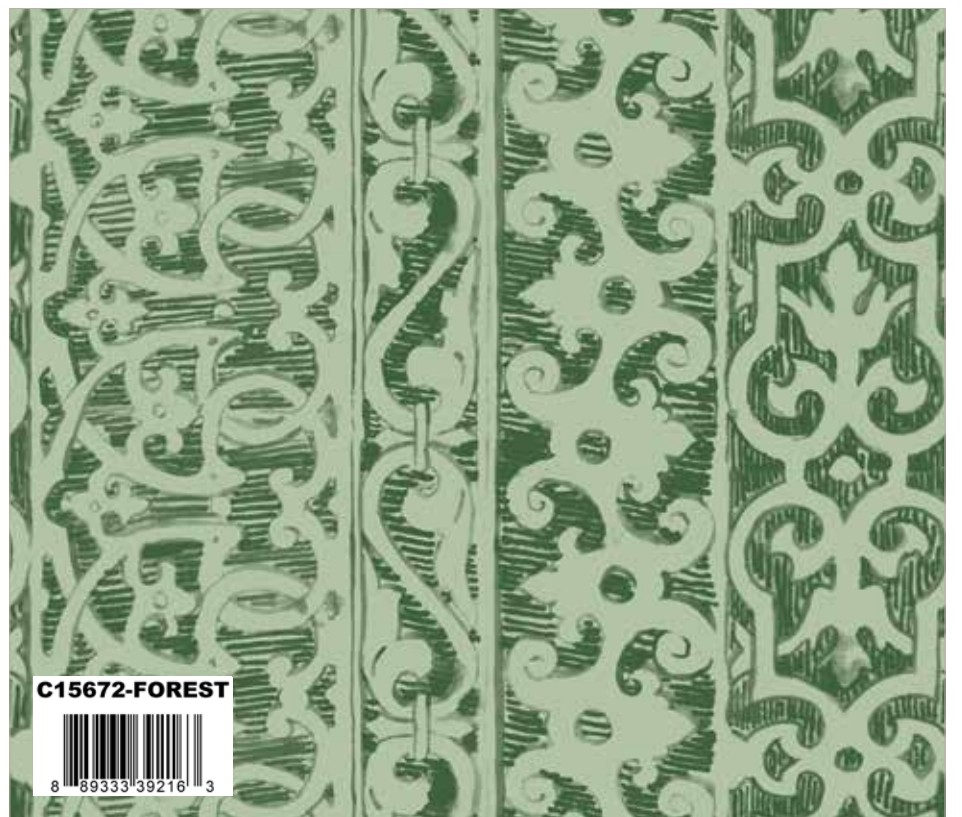


CD15671-SAGE



8 89333 39215 6

Sage Cute Cuttings



C15672-FOREST



8 89333 39216 3

Forest Filigree



C15673-YELLOW



8 89333 39221 7

Yellow Trifolium



C15674-FOREST



8 89333 39222 4

Forest Branches



coordinating basics

C805-SUNSHINE



8 89333 31447 9

Sunshine POParazzi



C640-SUGARPINK



8 89333 26349 4

Sugar Pink Dapple Dot



C440-SUGARPINK



8 89333 38357 4

Sugar Pink 1/8" Gingham



C605-MTNGREEN



8 89333 17932 0

Mountain Green Shabby



CD15670-SAGE



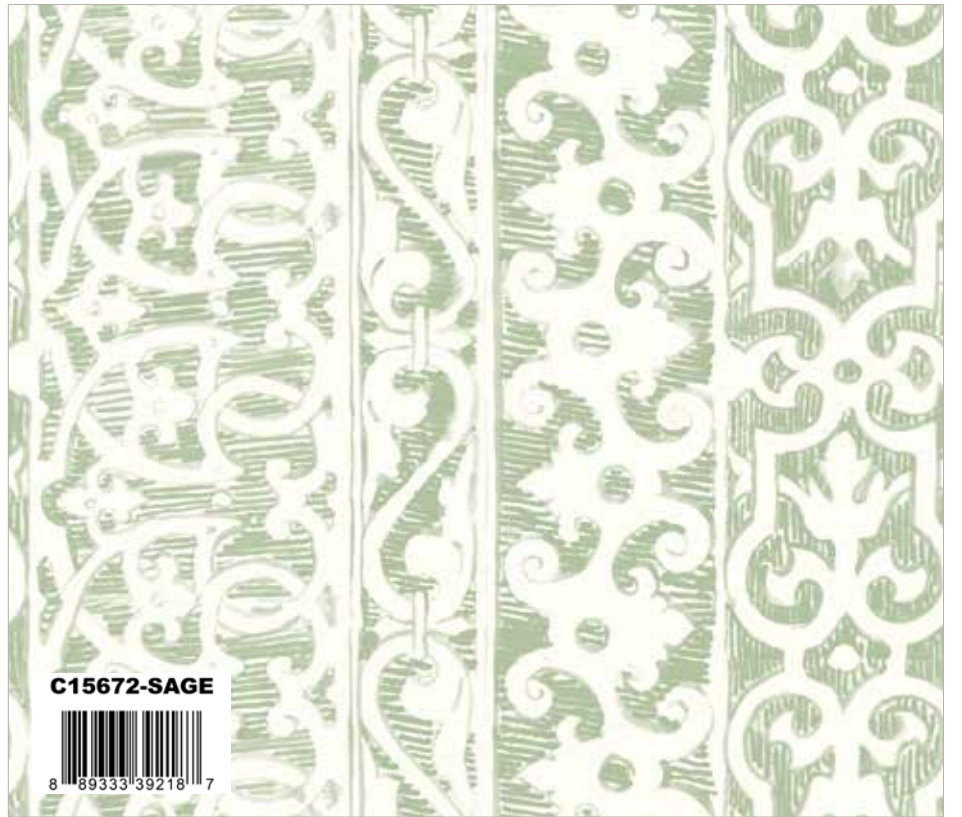
Sage Main



CD15671-HUNTER



Hunter Cute Cuttings



C15672-SAGE



Sage Filigree



C15673-SAGE



Sage Trifolium



C15674-PETAL



Petal Branches



C665-PEONY



Peony Dainty Daisy



C605-SWEETMINT



Sweet Mint Shabby



C200-TREETOP



Treetop Shade



C640-CHIVE

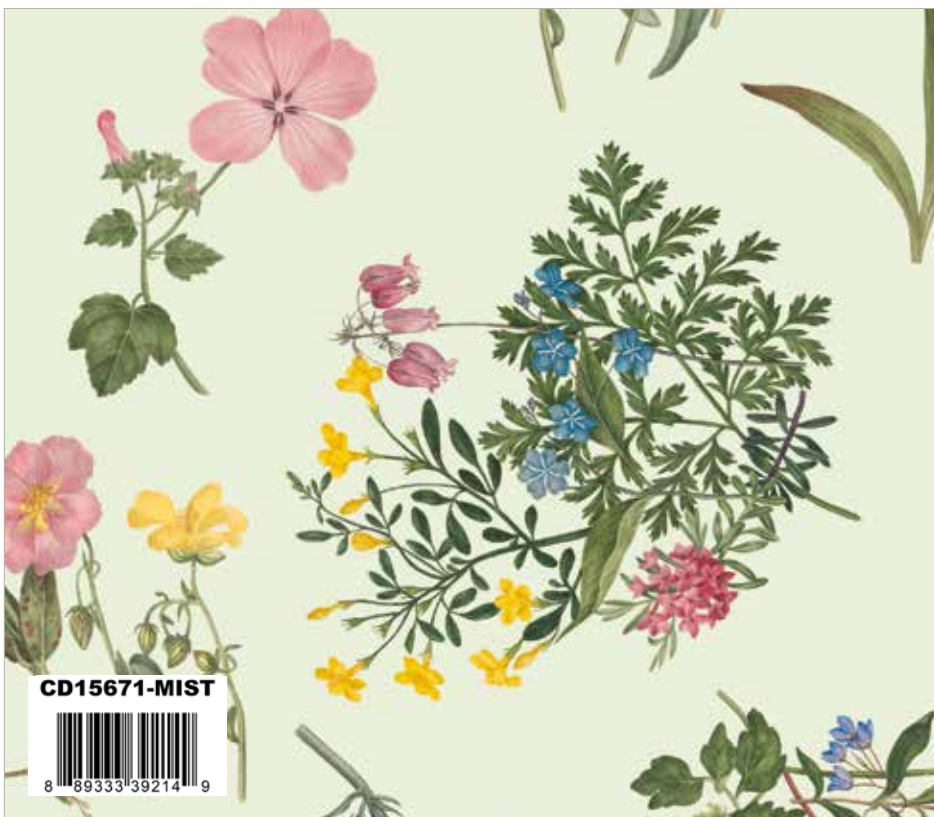


Chive Dapple Dot



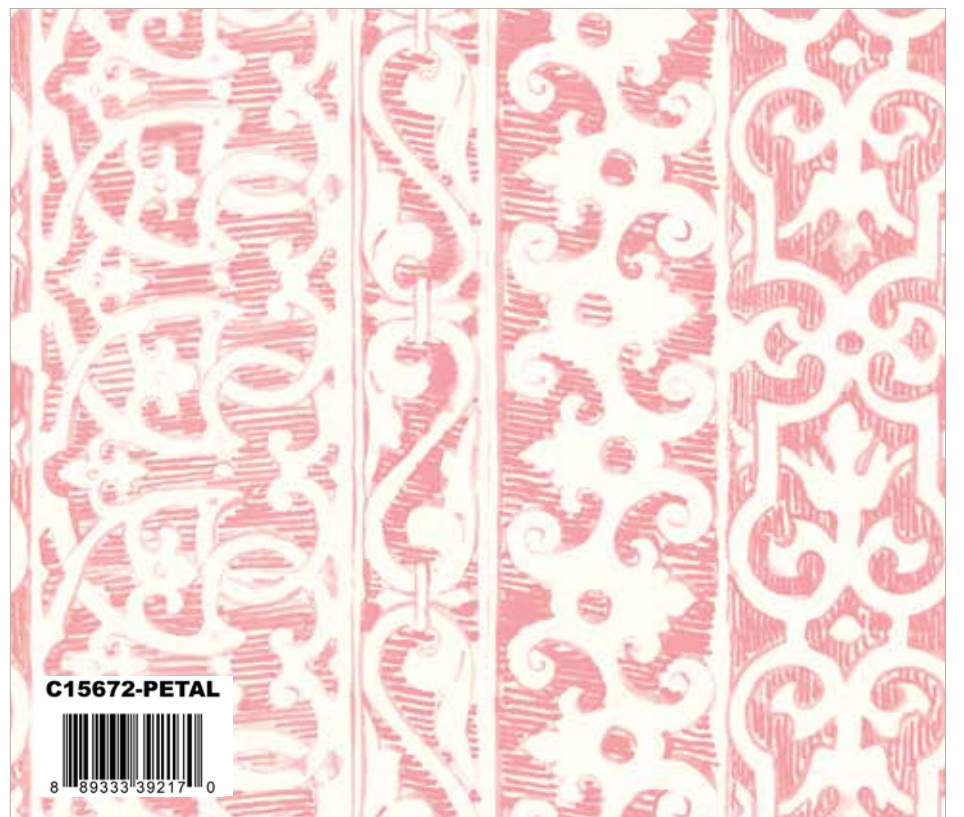
CD15670-HUNTER
 8 89333 39210 1

Hunter Main



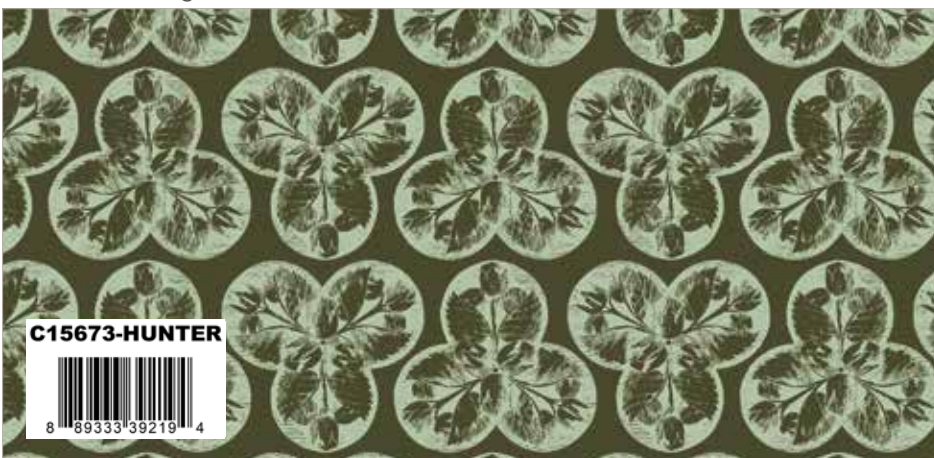
CD15671-MIST
 8 89333 39214 9

Mist Cute Cuttings



C15672-PETAL
 8 89333 39217 0

Petal Filigree



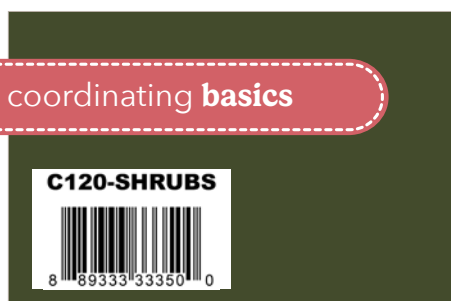
C15673-HUNTER
 8 89333 39219 4

Hunter Trifolium



C15674-YELLOW
 8 89333 39224 8

Yellow Branches



C120-SHRUBS
 8 89333 33350 0

Shrubs Confetti Cotton



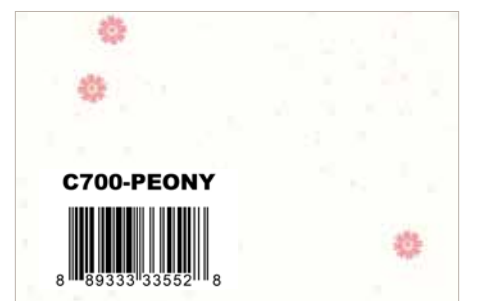
C825-SAGE
 8 89333 38972 9

Sage on Ivory Check Please!



C640-BUTTERCREAM
 8 89333 26342 5

Buttercream Dapple Dot



C700-PEONY
 8 89333 33552 8

Peony on Cloud Dainty Daisy

Floral 58/60" Linen



LN15675-NATURAL



Apron Panel



Apron Panel (10 panels per bolt)

Scaled to 16% | Actual Size is 36" x 43"



Bags Panel



Bags Panel (10 panels per bolt)

Scaled to 16% | Actual Size is 36" x 43"



Happy Zippers Singles
by Lori Holt of Bee in my Bonnet

Coral 16"

Cloud 22"



ST-30017



ST-30013



Water Lily by Jennifer Long



Quilt Size 64" x 76"

estimated requirements

(1) FQ-15670-15 Fat Quarter Bundle

Additional Fabrics

3 1/2 Yards C120-RILEYWHITE Confetti Cotton (Background)

5/8 Yard CD15670-SAGE Main (Binding)

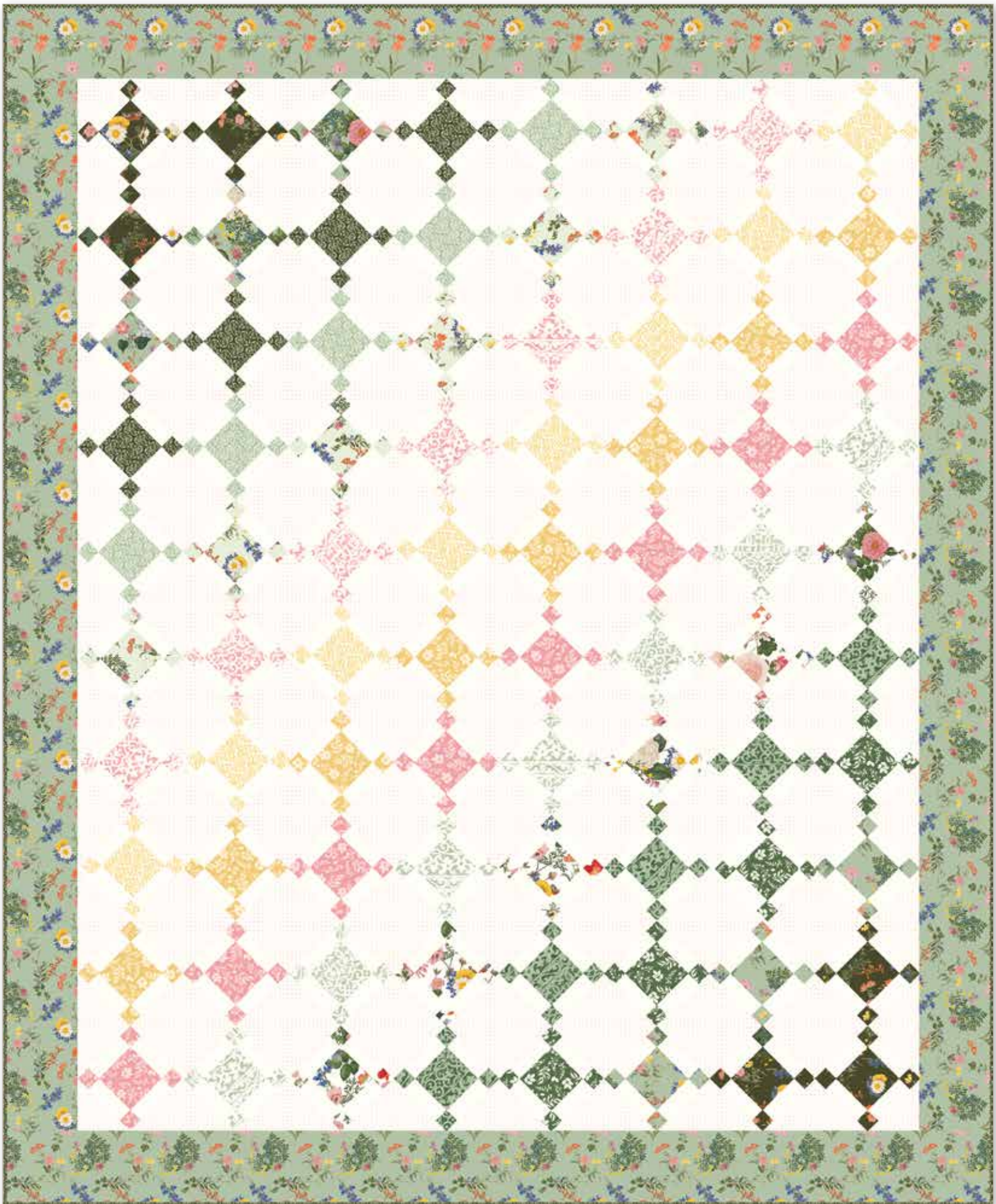
2 Yards WB640-FROSTING Dapple Dot (Backing)



Pre-order the
P177-WATERLILY
Quilt Pattern



Springtime by The RBD Designers



Quilt Size 66" x 80"

estimated requirements

1/8 Yard of Each

CD15670-HUNTER Main

CD15670-SAGE Main

CD15670-WHITE Main

CD15671-HUNTER Cute Cuttings

CD15671-MIST Cute Cuttings

C15672-FOREST Filigree

C15673-SAGE Trifolium

C15674-FOREST Branches

1/4 Yard of Each

C15672-PETAL Filigree

C15672-SAGE Filigree

C15673-YELLOW Trifolium

C15674-PETAL Branches

C15674-YELLOW Branches

Additional Fabrics

1 1/4 Yards C120-CLOUD Confetti Cotton

2 Yards CD15671-SAGE Cute Cuttings

2 1/8 Yards C600-75 BABY PINK Le Creme Swiss Dot (Background)

7/8 Yard C15673-HUNTER Trifolium (Includes Binding)

2 1/8 Yards WB640-FROSTING Dapple Dot (Backing)

FREE PATTERN
AVAILABLE ON OUR WEBSITE
DECEMBER 2024

www.rileyblakedesigns.com



CD15670 Hunter Main

Shown as Repeat 44" x 36"



About The Royal Horticultural Society

Nature's Portrait is a fabric collection inspired by the Royal Horticultural Society Lindley Collections, which houses one of the world's finest collections of botanical drawings, paintings, and literature. The artists featured in *Nature's Portrait* are Caroline Maria Applebee and Gertrude Jekyll.

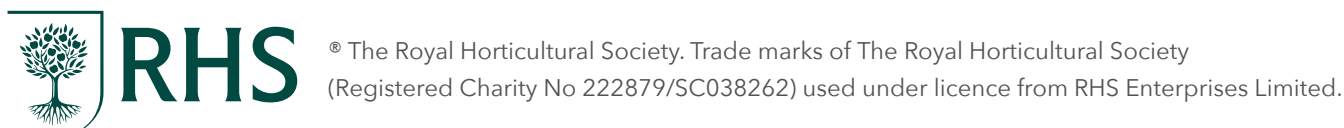
Caroline Maria Applebee (1787- 1854) was an amateur plantswomen and watercolour artist. The daughter of a clergyman from a middle-class family in Essex, England, her work features a wide variety of exotic and ornamental flowers.

The Lindley Library has over 300 watercolors of flowers from Applebee. Each illustration of Caroline Maria Applebee was executed on small sheets of watercolor paper and adhered to the album plates. Each is beautifully composed, and represent some of the most fashionable plants of the early 19th century.

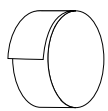
Gertrude Jekyll (1843-1942), artist, writer and one of the most influential 20th century garden designers. From an extraordinary scrapbook, 'Designs for Carving' (1866 - 1911), spanning 45 years of her life, our inspiration has been drawn from her sketches within.

RHS's vision is a world where gardening is embraced as a way of life - a source of joy and fulfilment, building healthier lives, stronger communities, and thriving environments. To achieve this, their mission is to be there for everyone on their lifelong adventure with gardening.

Make gardening your lifelong adventure. Visit rhs.org.uk/about-us to find out more about their work.



precuts



RP-15670-40



8 89333 39225 5

Rolie Polie
40 Pieces

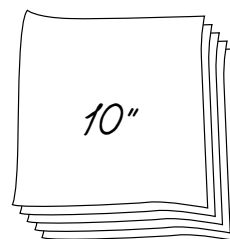


5-15670-42



8 89333 39226 2

5-Inch Stacker
42 Pieces

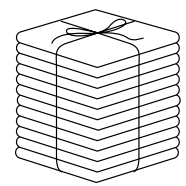


10-15670-42



8 89333 39227 9

10-Inch Stacker
42 Pieces



FQ-15670-15



8 89333 39228 6

Fat Quarter Bundle
15 Pieces

pre-order only

ADD ANY LAMINATE WITH 100 YARDS MINIMUM
PANELS ARE INCLUDED IN CASE PACKS
LINEN IS NOT INCLUDED IN CASE PACKS



1YD-15670H-5



8 89333 39229 3

Hunter - 1-Yard Bundle
5 Pieces



1YD-15670S-5



8 89333 39230 9

Sage - 1-Yard Bundle
5 Pieces



1YD-15670W-5



8 89333 39231 6

White - 1-Yard Bundle
5 Pieces

CP10-15670-17



8 89333 39233 0

10-Yard Case Pack

CP15-15670-17



8 89333 39234 7

15-Yard Case Pack

available December 2024 **last call July 1, 2024**

100% FINE COTTON · 43/44" WIDE · MADE IN KOREA



9646 South 500 West
Sandy, UT 84070
888.768.8454 · 801.816.0540
www.rileyblakedesigns.com

©2024 Riley Blake Designs

Machine Wash Cold
No Chlorine Bleach
Tumble Dry Low
Remove Promptly
Not Intended for Children's Sleepwear

The projects portrayed are virtual images. The look of the projects may differ with actual fabric.

The project virtual(s) shown may be different than the image shown on the pattern cover.

Approximate fabric requirements are listed to aid in estimating the amount of yardage to order and are subject to change.

Backing yardage is shown using the best use of fabric and may not be intended for directional fabric.