  
**Riley Blake**  
DESIGNS

INTRODUCES

# Nicholas

*the cheerful giver*

J. WECKER FRISCH©





St. Nicholas Panel





**Additional Supplies Required For Each Stocking:**

15" x 20" Piece of Fabric for the Back of the Stocking  
Two 15" x 20" Pieces of Fabric for the Stocking Lining  
2 Pieces of Fabric 8 1/2" x 10" for the Stocking Cuff  
4' Piece of Ribbon (for hanging the stocking) & Fray Check  
Optional: 2 Pieces of Lightweight Interfacing each 15" x 20"  
For Applique: 7" x 5" piece of paper-backed fusible web

**Santa Circle Applique Instructions:**  
Cut out the Santa circle from the panel of fabric loosely iron a piece of paper-backed fusible web to the wrong side of the circle. Cut out the circle again, precisely this time.  
Peel off the paper backing from the circle and iron it onto the stocking panel piece in the desired location. Stitch around the edge of the circle using matching thread and a straight stitch or an applique stitch on your machine.  
Peel off the paper backing from the circle and iron it onto the stocking panel piece in the desired location. Stitch around the edge of the circle using matching thread and a straight stitch or an applique stitch on your machine.

**Stocking Construction Steps:** Note: All seam allowances are 1/2" unless otherwise noted.  
Cut a Stocking Panel Piece out along the dashed lines. Using the Stocking Panel Piece as a guide, cut from your fabric 1 piece for the stocking back and 2 pieces for the stocking lining and two pieces from lightweight interfacing (iron lightweight interfacing onto the wrong side of your stocking outside pieces).  
Stitch the Stocking Front and Back Pieces together, right sides facing. Press seams open (as much as possible) and clip the seams along the curves. Repeat with the two Stocking Lining pieces. Turn the stocking piece right side out. Gently press the lining piece wrong side out.  
Sew the Stocking Lining inside the sewn Stocking with side seams matching. The wrong side of the fabric should be facing.  
Baste the Stocking and Lining pieces together along the top edge 1/2" down from the raw edge of the fabric.  
Stitch the stocking cuff pieces together along the 20" sides, right sides facing. Press the seams open.  
Fold the sewn cuff piece in half lengthwise, wrong sides facing. Press along the fold. Your piece should now be approx. 5" tall by 8" wide.  
Cut a piece of ribbon to 4" long. Finish the ends with fray check and fold the piece in half lengthwise. Pin the folded ribbon to the stocking lining on top of the seam allowance at the back (the heel side) of the basted stocking. The raw ends of the ribbon will be facing up.  
Sew the folded cuff piece into the basted stocking piece, matching side seams and raw edges. Pin in place. Stitch the cuff to the stocking using a 3/8" seam allowance, along the top edge of the stocking.  
Pull the cuff out of the stocking and then fold it — on the top of the stocking. Press the stocking well and it's ready to use!  
*\*in a photo tutorial of the construction process.*

**Panel 1: Santa Claus Illustration**  
A detailed illustration of Santa Claus wearing his traditional red suit with white trim, a yellow belt buckle, and a red hat with a white pom-pom. He has a long white beard and is holding a blue bag over his shoulder. A circular postmark stamp is visible on his leg, reading "ST. NICHOLAS DEC 25".

**Panel 2: Stocking Template**  
A pattern template for a Christmas stocking. It includes a cuff at the top and a heel patch at the bottom. Handwritten notes include "We bring you peace & joy", "I love you", and "Meet you at the point in the field behind the house". There is also a red "Postcard" stamp and a circular postmark reading "ST. LOUIS MO DEC 25".

**Panel 3: St. Nicholas Christ Skit**  
The title "ST. NICHOLAS Christ Skit" is written in large, stylized letters. Below it is a list of items and their costs, such as "3 chairs .85", "10 chairs 1.15", "3rd glue 1.50", "10 chairs 1.50", "shoes 1.50", "beef 3.00", "shoes 2.45", "flour 1.20", "brownie mix 1.50", "cups 1.50", "total 3.60".

**Panel 4: Stocking Template with Illustration**  
A pattern template for a Christmas stocking, similar to Panel 2, but with a different illustration of Santa Claus at the bottom. The illustration shows Santa Claus in a red suit, holding a green box labeled "806".

**Panel 5: St. Nicholas Christ Skit**  
The title "ST. NICHOLAS Christ Skit" is written in large, stylized letters. Below it is a list of items and their costs, such as "3 chairs .85", "10 chairs 1.15", "3rd glue 1.50", "10 chairs 1.50", "shoes 1.50", "beef 3.00", "shoes 2.45", "flour 1.20", "brownie mix 1.50", "cups 1.50", "total 3.60".

**Panel 6: Stocking Template with Illustration**  
A pattern template for a Christmas stocking, similar to Panel 2, but with a different illustration of Santa Claus at the bottom. The illustration shows Santa Claus in a red suit, holding a green box labeled "806".

**PD12331-PANEL 1**

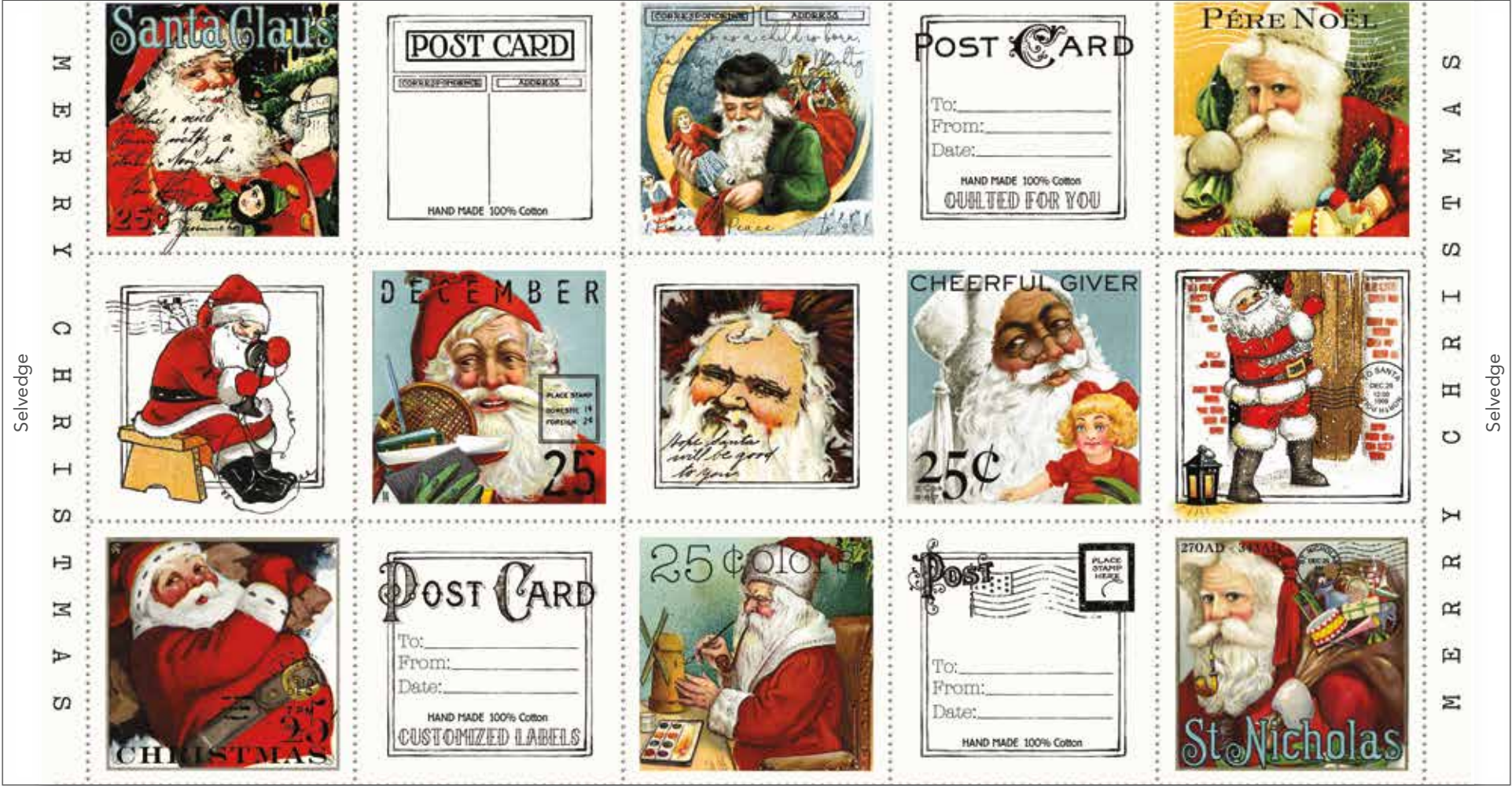
8 89333 26286 2



Cheerful Giver Panel



Cheerful Giver Panel (Actual Scale)



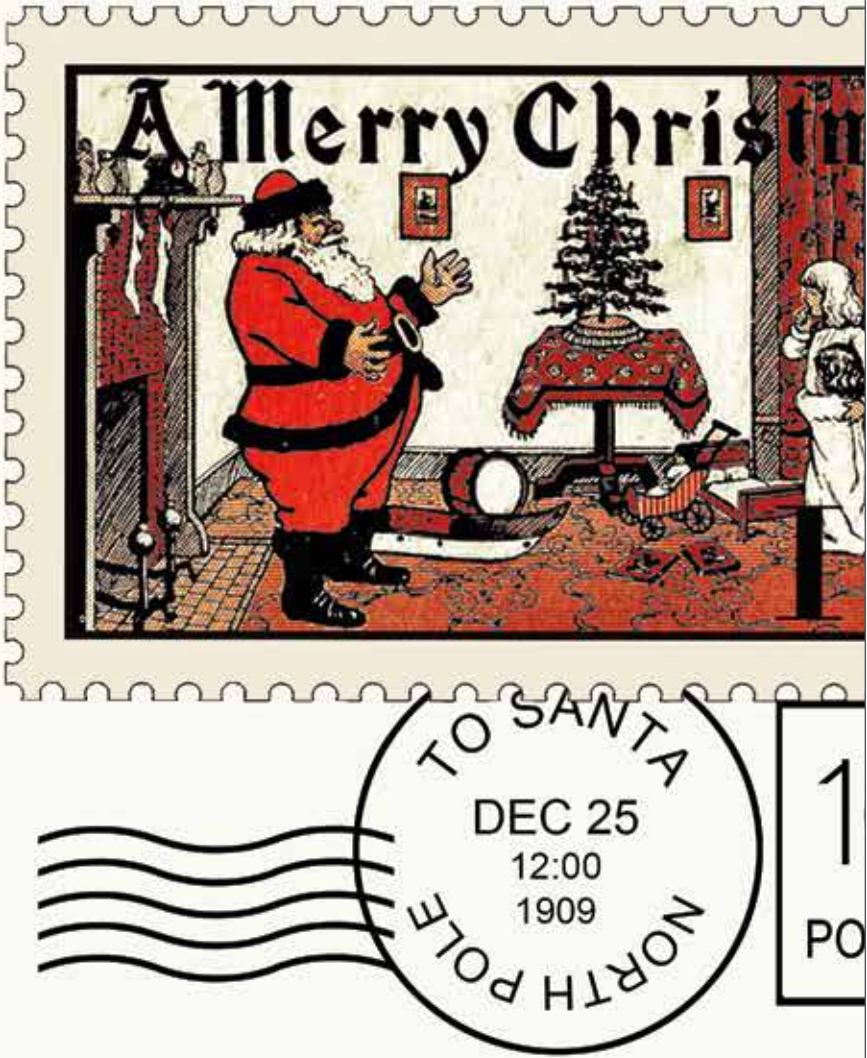
Shown as Repeat 24" x 43"



All I want for Christmas . . .



Nicholas Postage Stamps (Actual Scale)

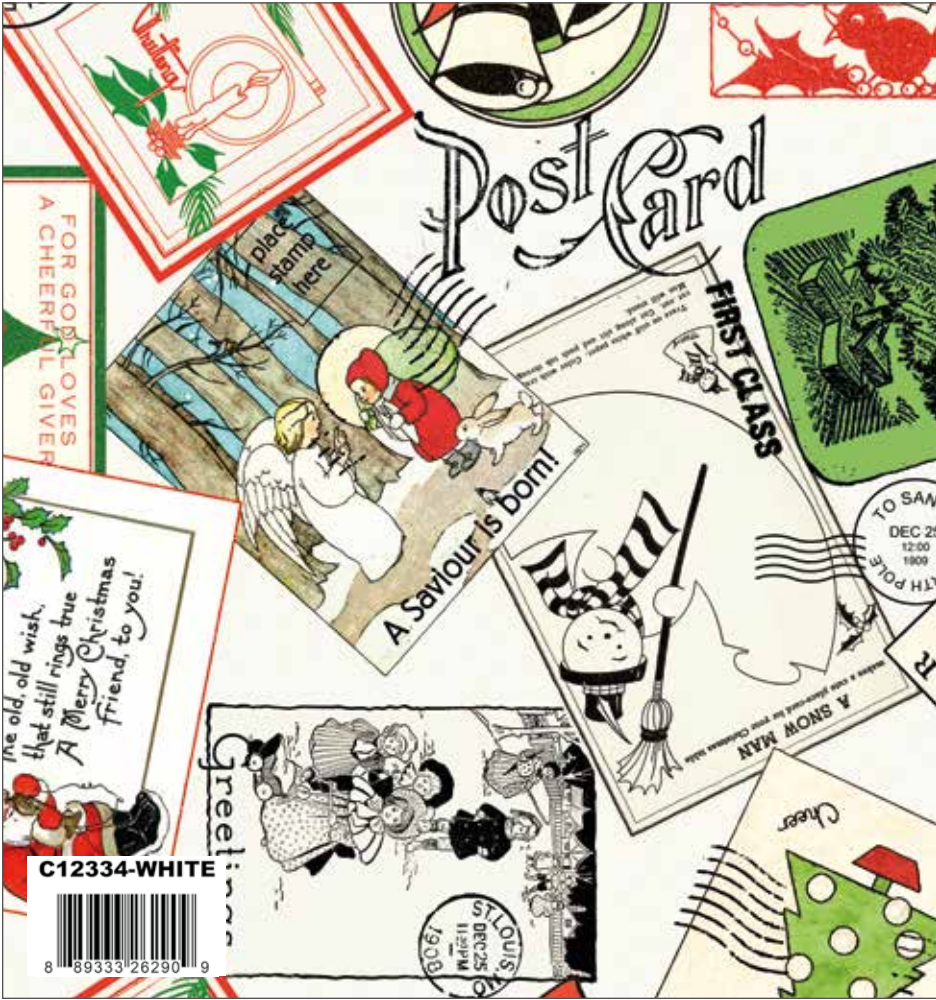


Shown as Repeat 36" x 44"





Red Nicholas Christmas Posts (Actual Scale)



White Nicholas Christmas Posts

Scaled to 50%



Charcoal Nicholas Christmas Posts

Scaled to 50%





Red Nicholas Santa Stamps (Actual Scale)



Black Nicholas Santa Stamps

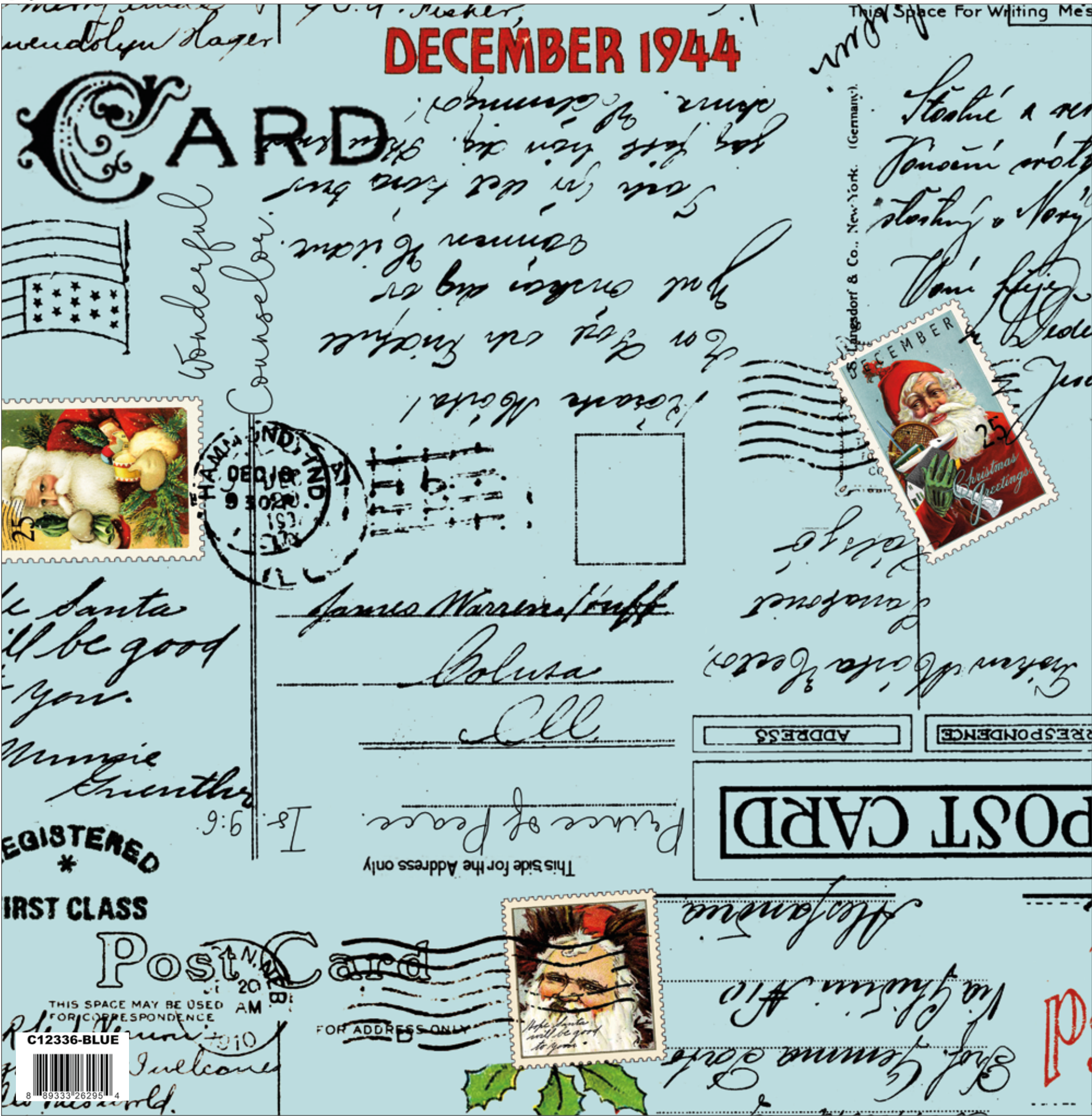
Scaled to 50%



White Nicholas Santa Stamps

Scaled to 50%



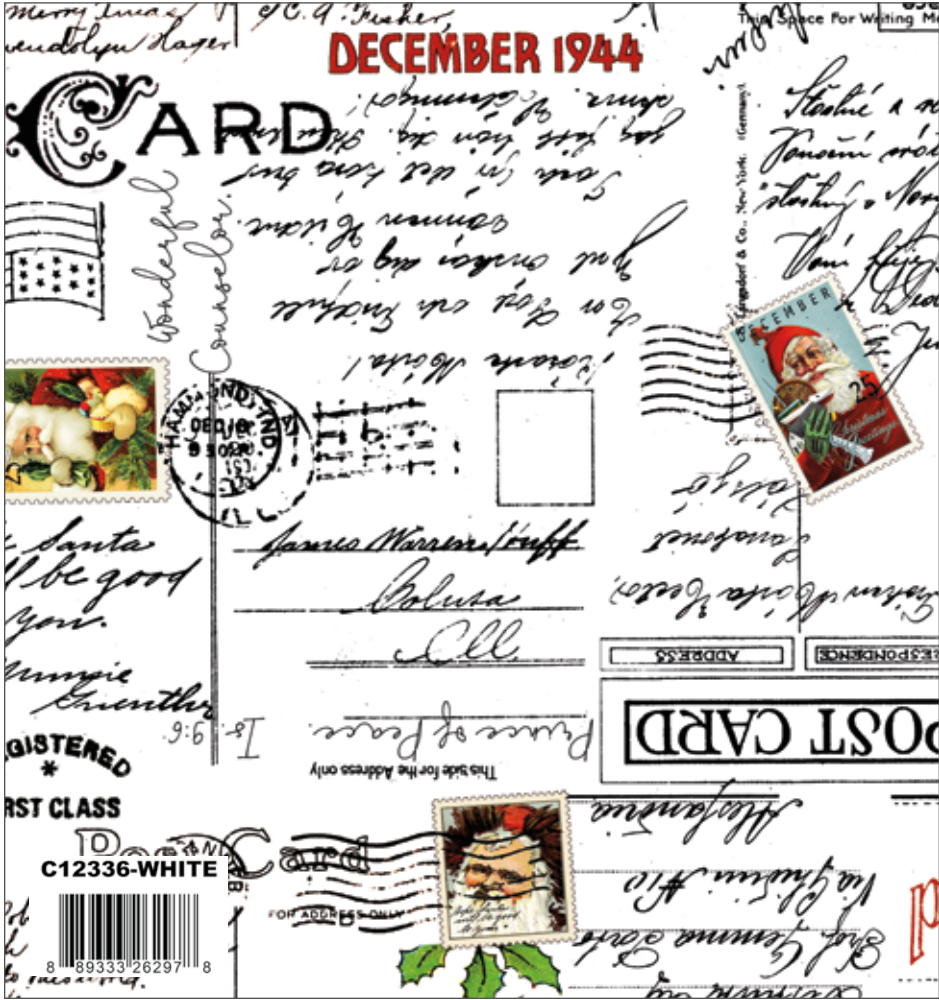


Blue Nicholas Christmas Greetings



Green Nicholas Christmas Greetings

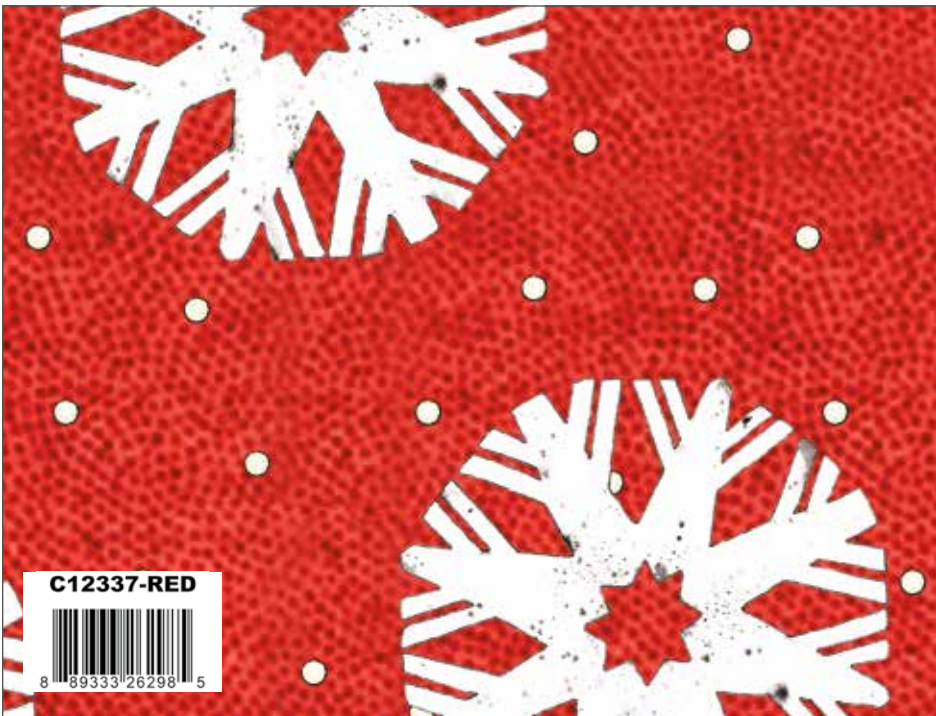
Scaled to 50%



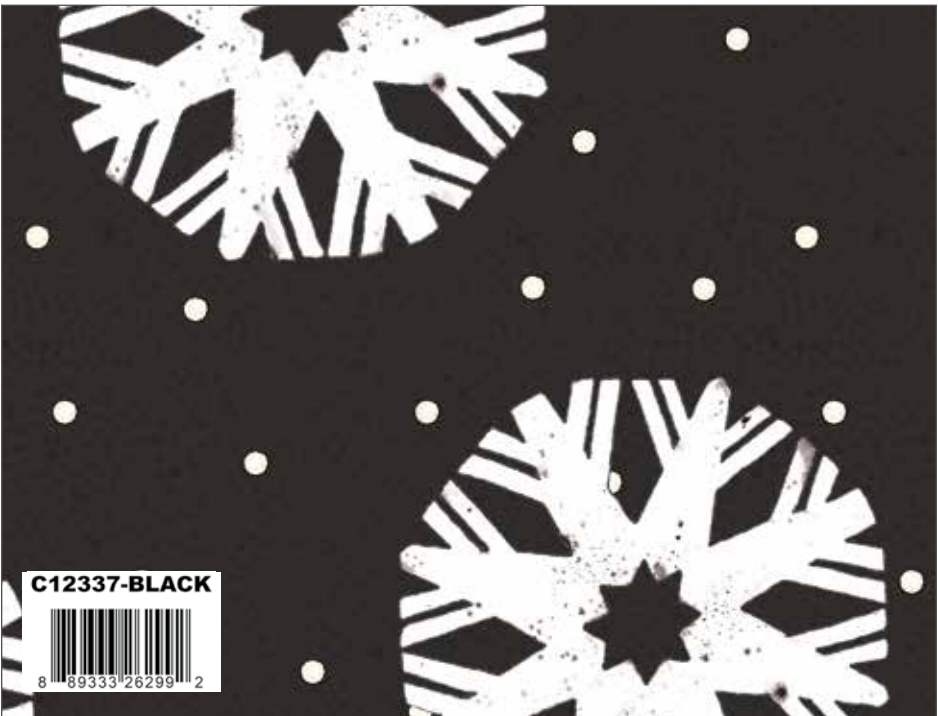
White Nicholas Christmas Greetings

Scaled to 50%

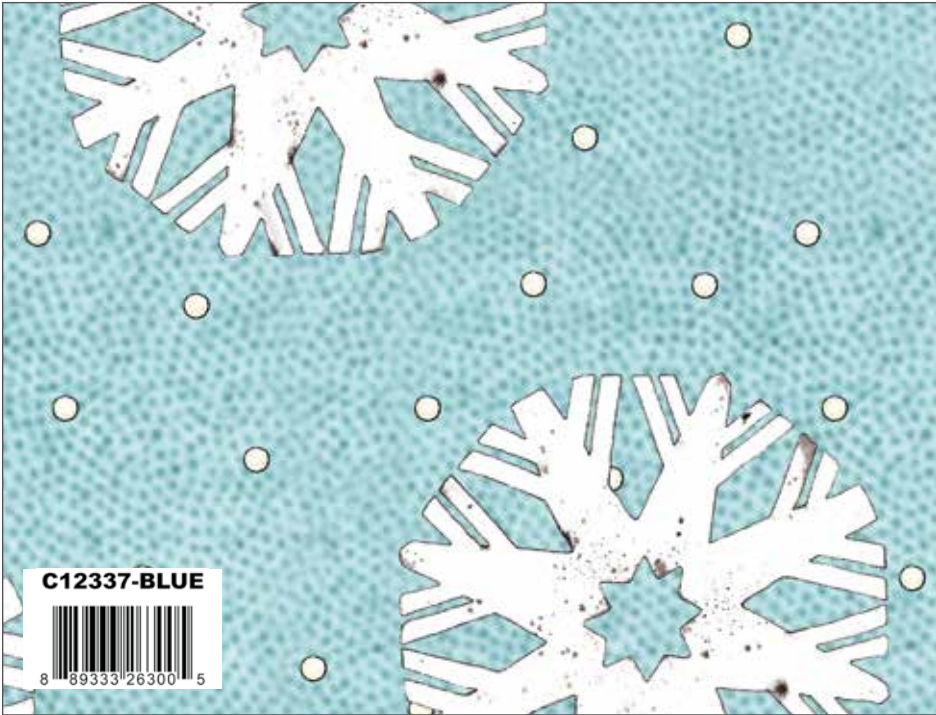




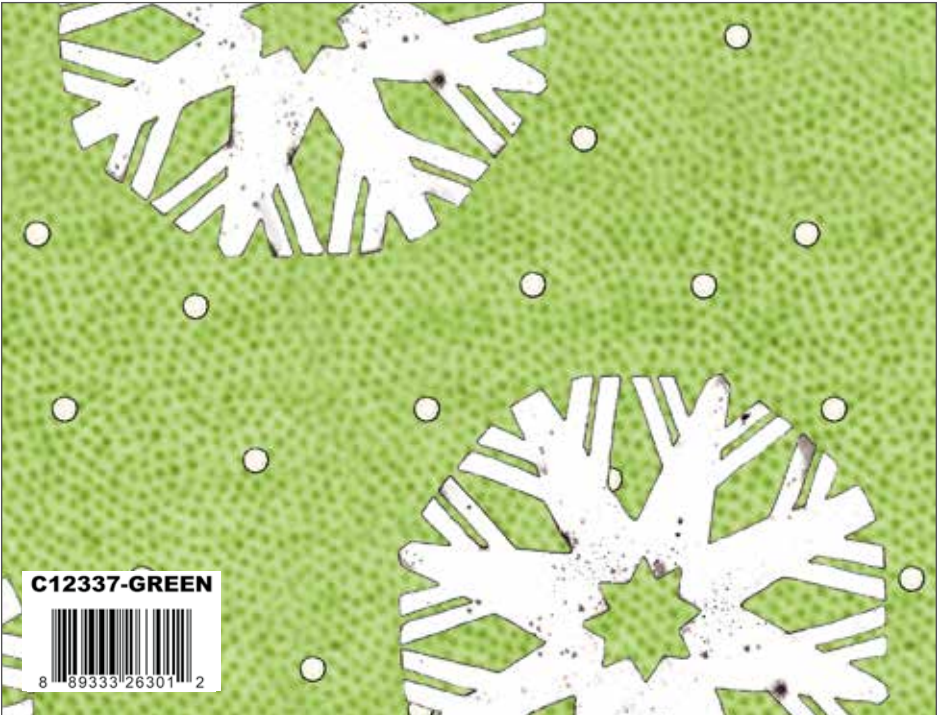
Red Nicholas Snowflake Dots



Black Nicholas Snowflake Dots



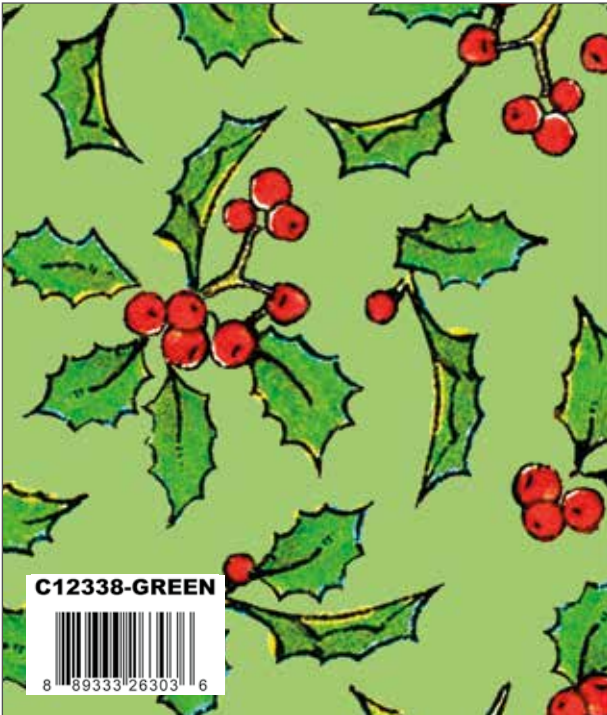
Blue Nicholas Snowflake Dots



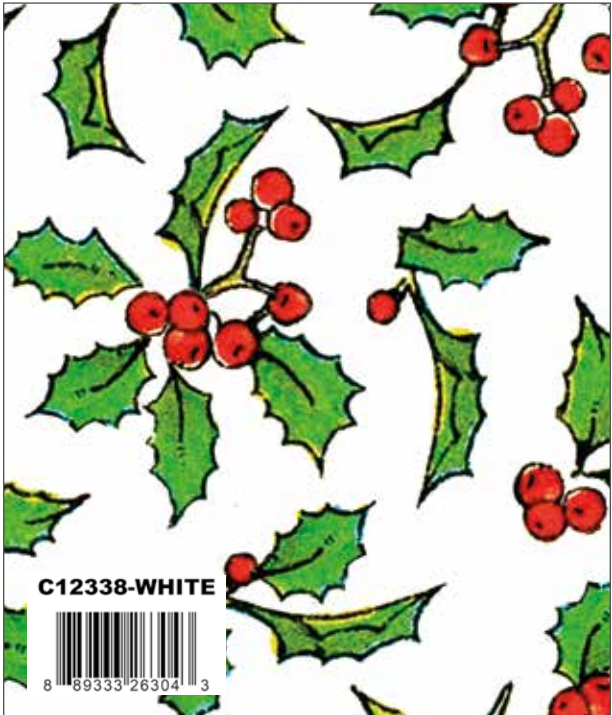
Green Nicholas Snowflake Dots



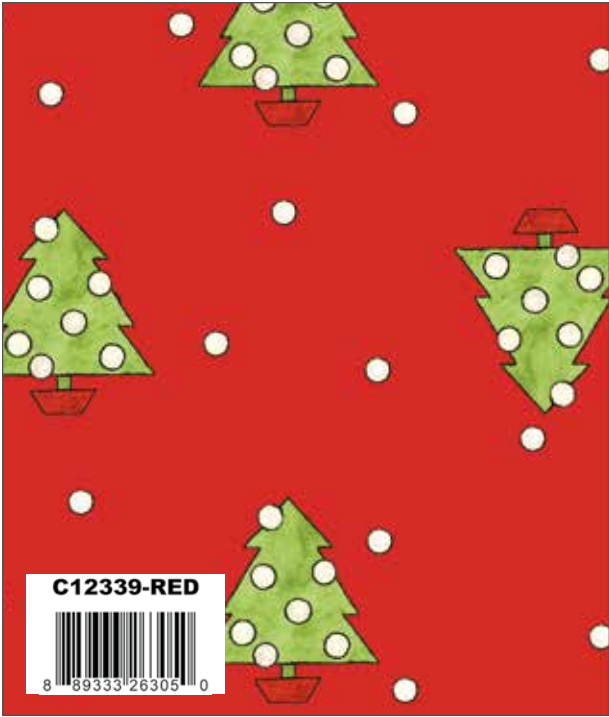
Black Nicholas Holly Days



Green Nicholas Holly Days



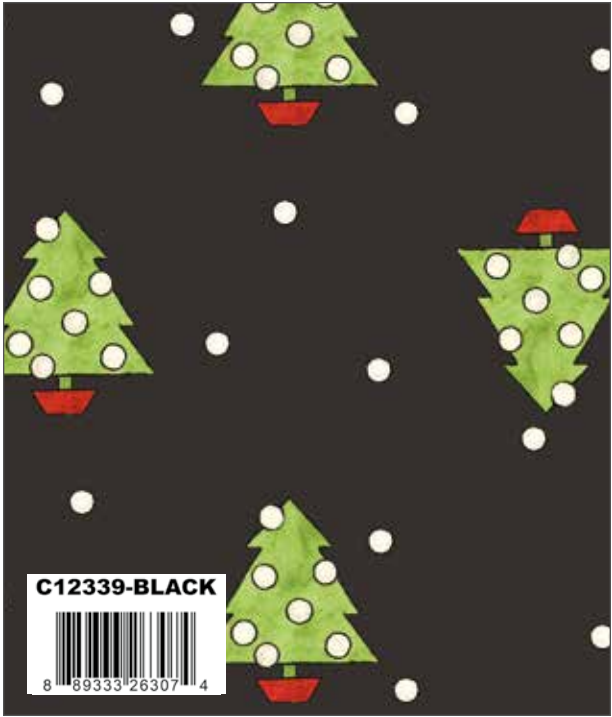
White Nicholas Holly Days



Red Nicholas Tiny Trees



White Nicholas Tiny Trees

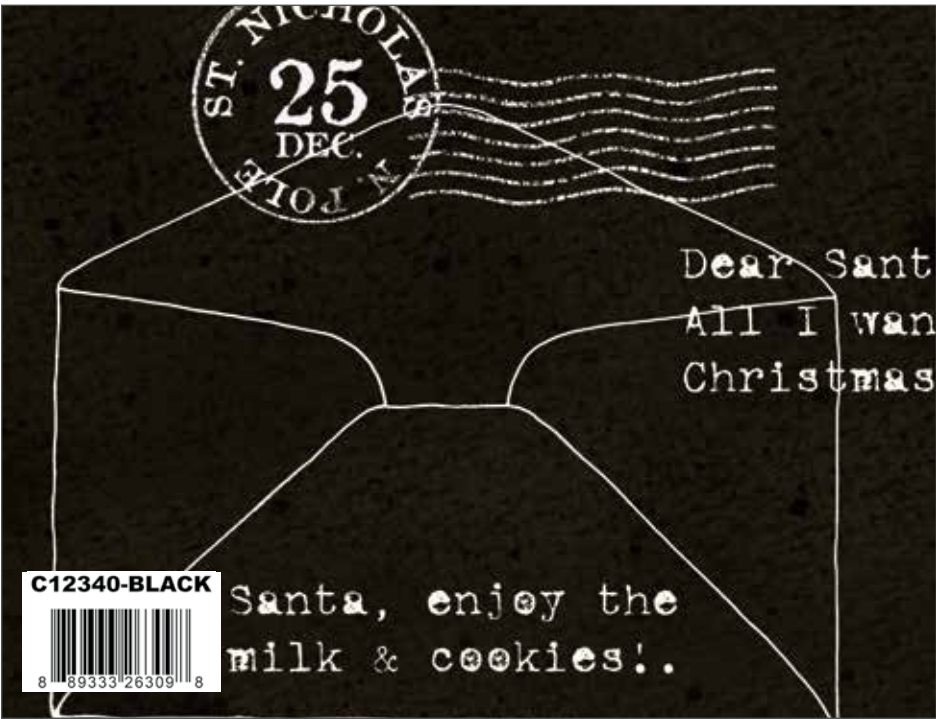


Black Nicholas Tiny Trees

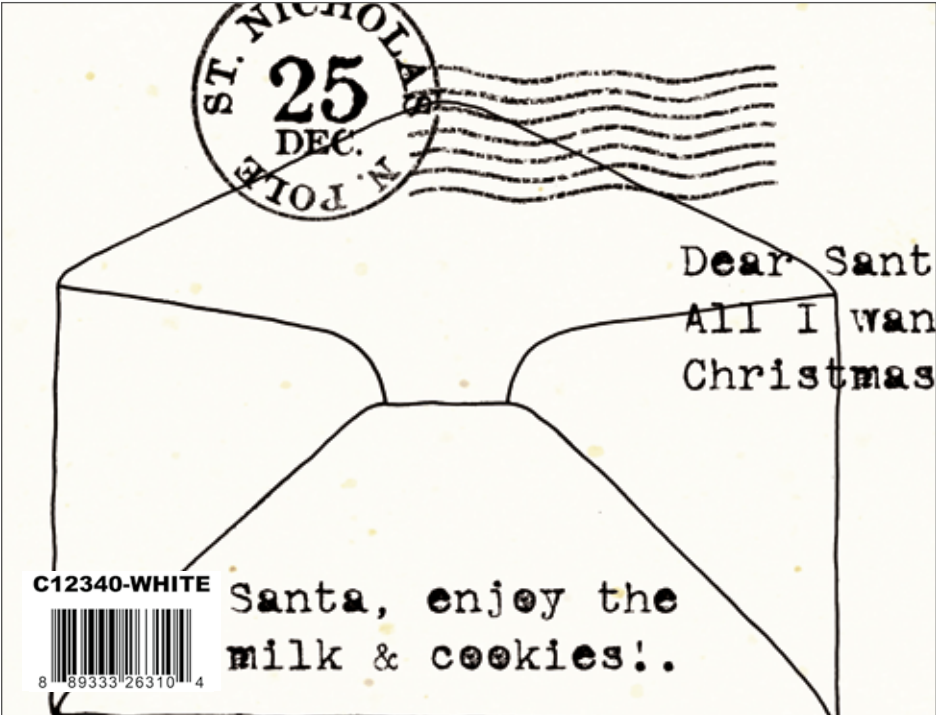




Red Nicholas Letters to Santa



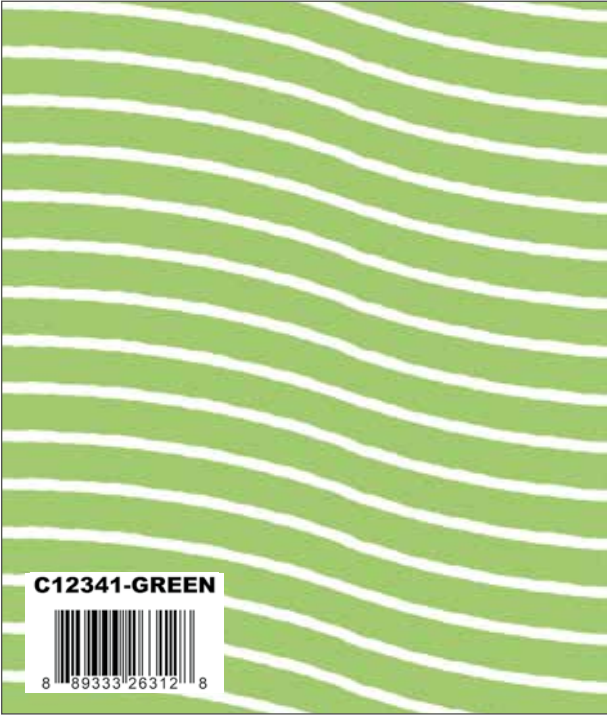
Black Nicholas Letters to Santa



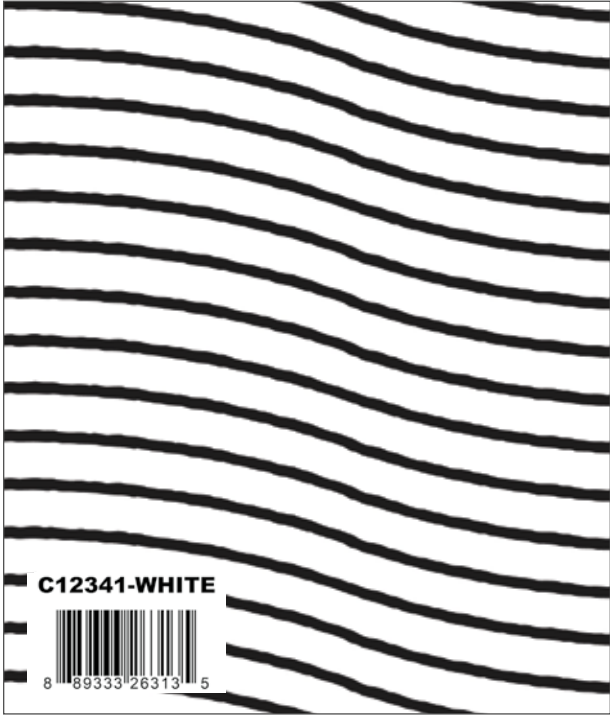
White Nicholas Letters to Santa



Red Nicholas Postal Stripes



Green Nicholas Postal Stripes



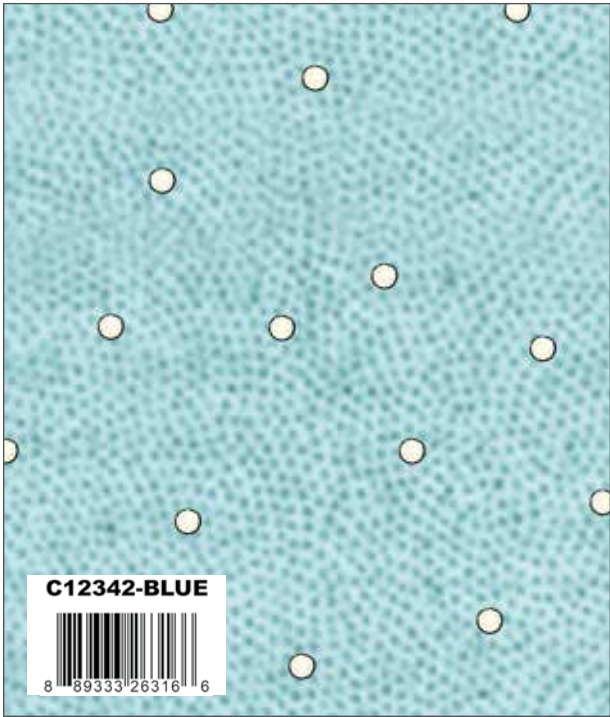
White Nicholas Postal Stripes



Red Nicholas Snow Dot Texture



Green Nicholas Snow Dot Texture



Blue Nicholas Snow Dot Texture

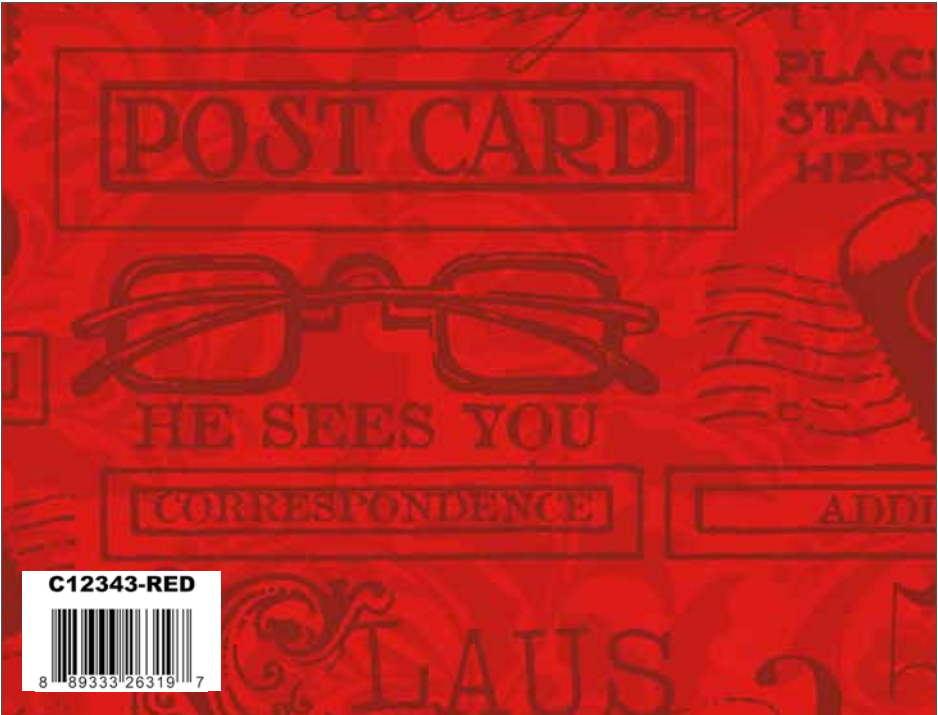




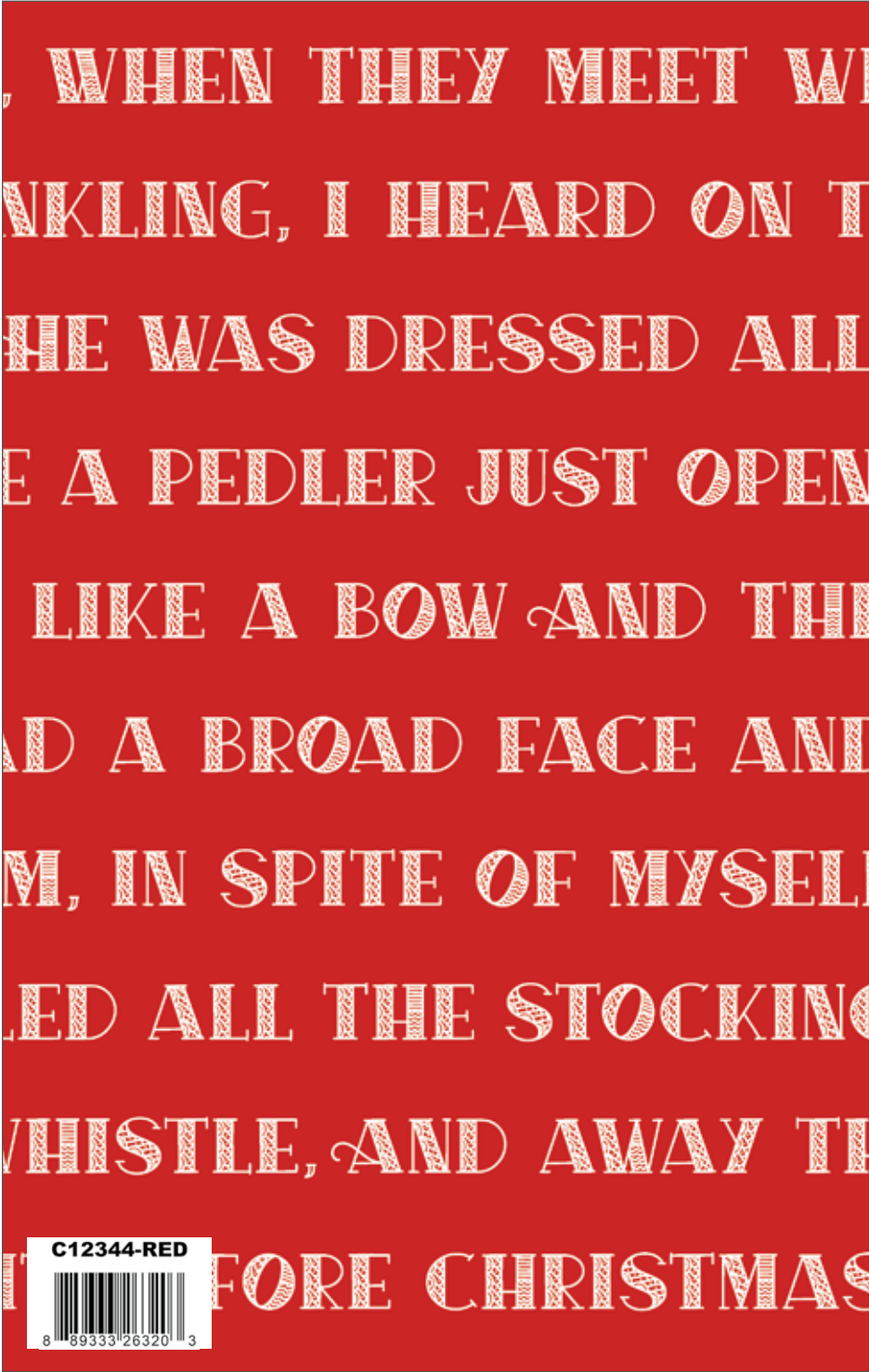
Holly Nicholas Greetings Blender



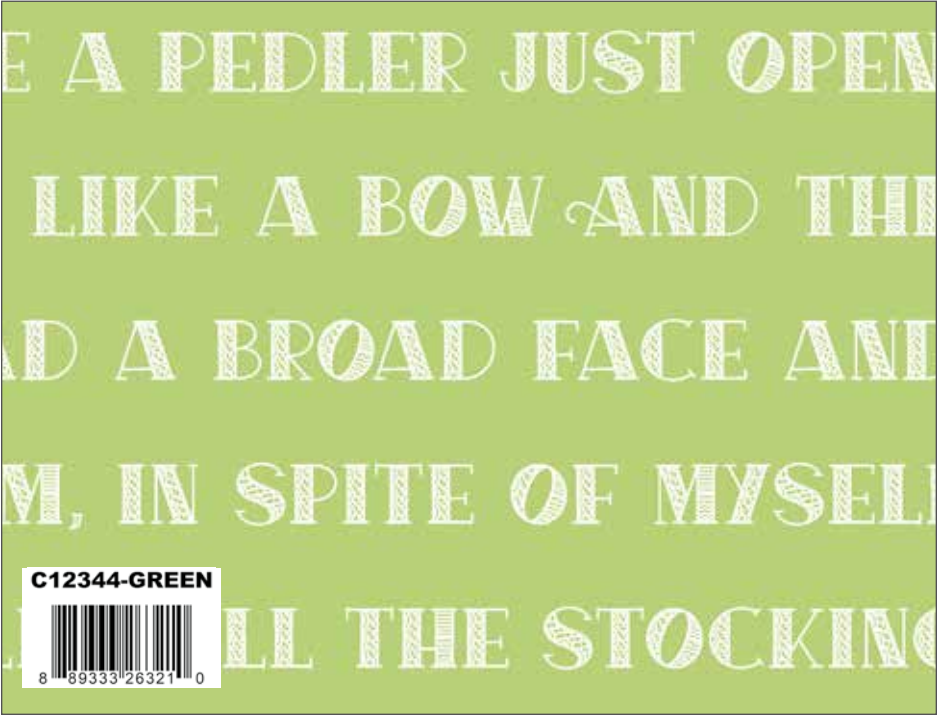
Black Nicholas Greetings Blender



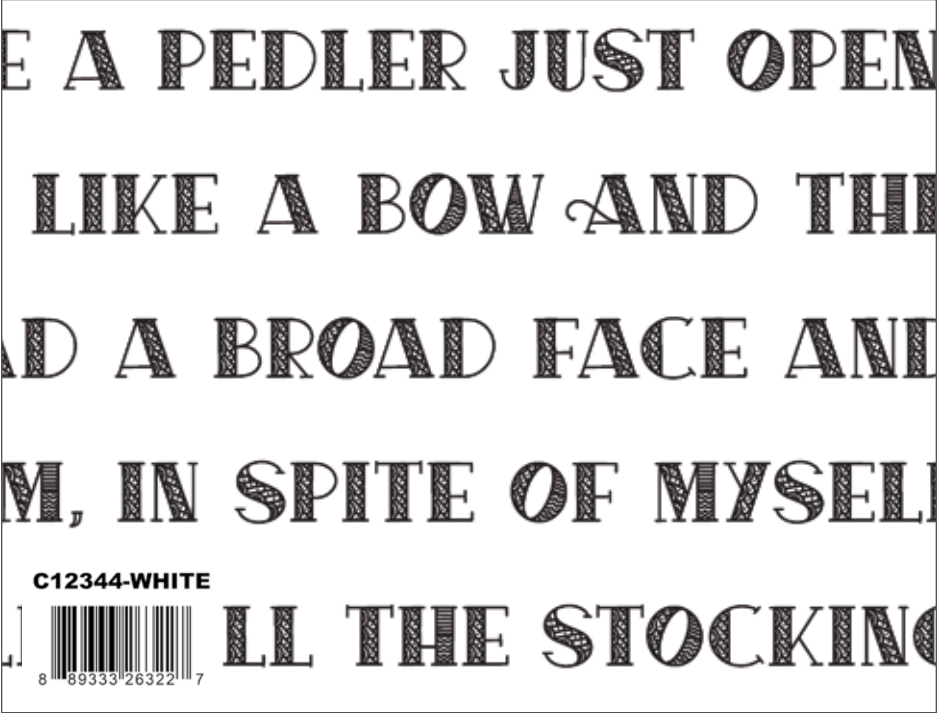
Red Nicholas Greetings Blender



Red Nicholas Twas the Night



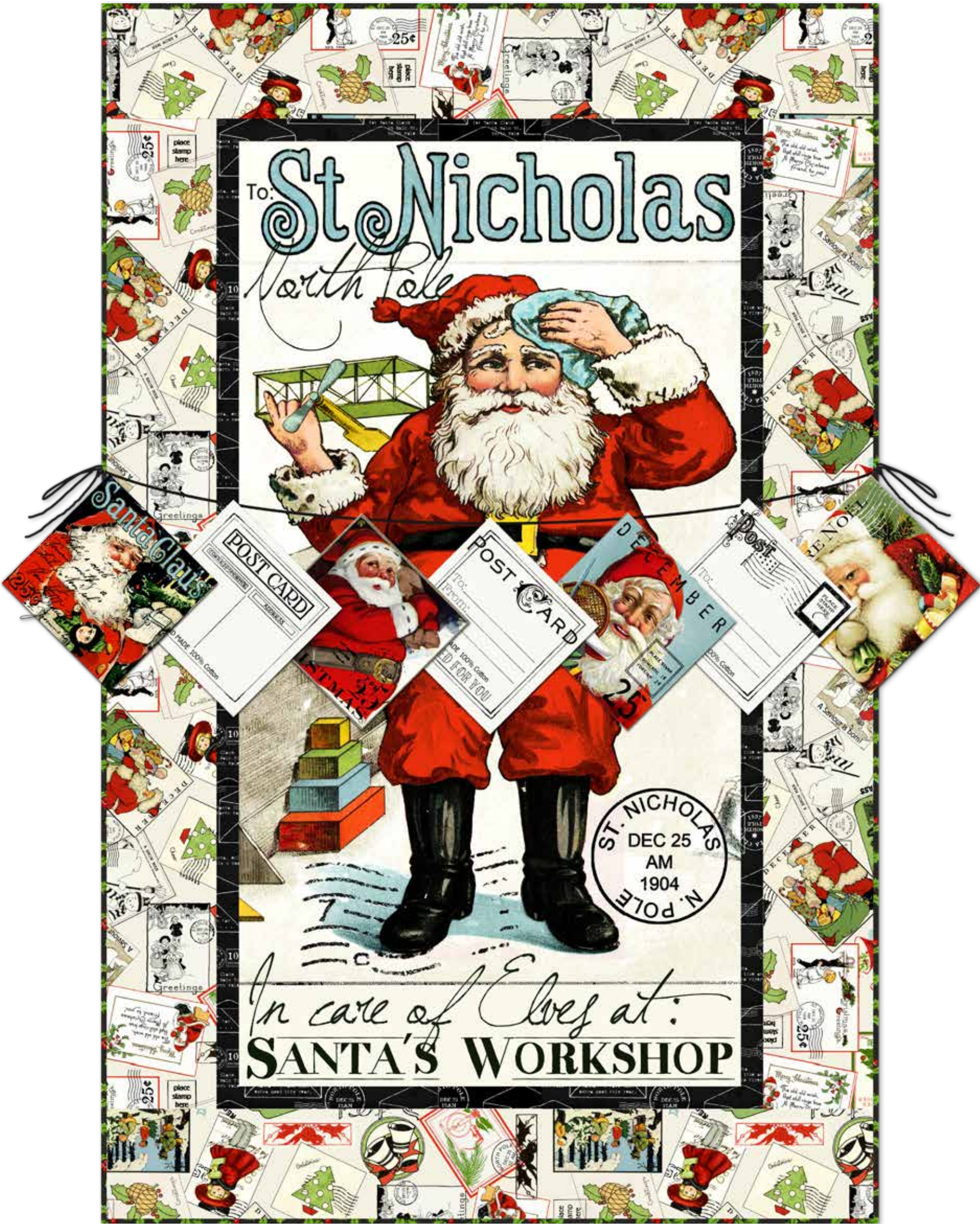
Green Nicholas Twas the Night



White Nicholas Twas the Night



Christmas Post Cards by J. Wecker Frisch



Approx Quilt Size 35" x 55"



Fabric Requirements

- 1 PD12330 Main Panel
- 1 PD12332 Cheerful Giver Panel
- 1 Yard C12334 Cream Christmas Posts
- 1/2 Yard C12338 Black Holly Days (Binding)
- 1/4 Yard C12340 Black Letters to Santa

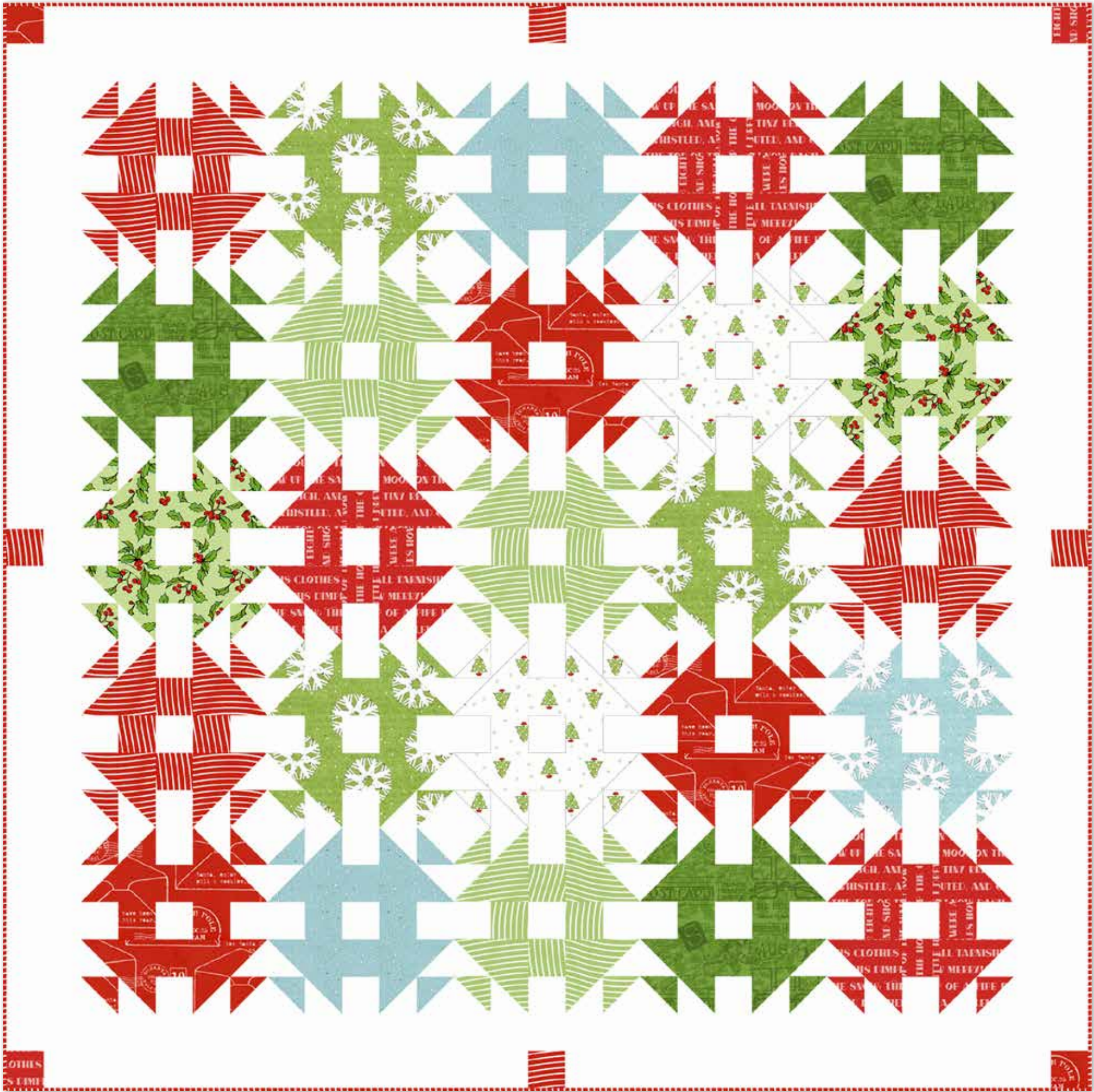


Free Pattern will be available at:  
[www.rileyblakedesigns.com/free-quilt-patterns](http://www.rileyblakedesigns.com/free-quilt-patterns)

\* Approximate fabric requirements are listed to aid in estimating the amount of yardage to order and are subject to change.



Christmas Charm by J. Wecker Frisch



Approx Quilt Size 58" x 58"

Fabric Requirements

1/2 Yard of Each:

- C12337 Green Snowflake Dots
- C12340 Red Letters to Santa
- C12341 Green Stripes
- C12343 Green Blender
- C12344 Red Twas the Night

1/4 Yard of Each:

- C12337 Blue Snowflake Dots
- C12338 Green Holly Days
- C12339 White Tiny Trees
- C12342 Blue Dot Texture

Other Fabrics:

- 2 1/2 Yards C120 Cloud Solid
- 1 1/2 Yards C12341 Red Postal Stripes
- (Includes Binding)



Free Pattern will be available at:  
[www.rileyblakedesigns.com/free-quilt-patterns](http://www.rileyblakedesigns.com/free-quilt-patterns)

\* Approximate fabric requirements are listed to aid in estimating the amount of yardage to order and are subject to change.



About the Line



J. Wecker Frisch  
@jweckerfrisch

Nicholas, *The Cheerful Giver* is an array of antique postcards and Christmas ephemera from the artist’s personal collection. The scripture focus is a favorite of Janet’s from 2 Corinthians 9:7.



PRECUTS

Flat Fold Bundle  
25 Yards

FFYD-12330



8 89333 26332 6

5-Inch Stacker  
42 Pieces



5-12330-42



8 89333 26324 1

10-Inch Stacker  
42 Pieces



10-12330-42



8 89333 26323 4

Rolie Polie  
40 Pieces

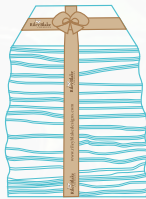


RP-12330-40



8 89333 26325 8

Fat Quarter



FQ-12330-34



8 89333 26326 5

PRE-ORDER ONLY

ADD ANY LAMINATE WITH 100 YARDS MINIMUM

10-Yard Case Pack

CP10-12330-38



8 89333 26327 2

Black - 1 Yard Bundle  
16 Pieces

1YD-12330B-16



8 89333 26329 6

Green - 1 Yard Bundle  
15 Pieces

1YD-12330G-15



8 89333 26330 2

15-Yard Case Pack

CP15-12330-38



8 89333 26328 9

Red - 1 Yard Bundle  
15 Pieces

1YD-12330R-15



8 89333 26331 9

AVAILABLE JUNE 2022

100% FINE COTTON 43/44" WIDE • MACHINE WASH COLD • NO CHLORINE BLEACH • TUMBLE DRY LOW • REMOVE PROMPTLY

Riley Blake Designs • 9646 South 500 West, Sandy, Utah 84070

Toll Free 1.888.768.8454 • Tel 801.816.0540 • Fax 801.816.0542

www.rileyblakedesigns.com

Not intended for children’s sleepwear

©2021 Riley Blake Designs and J. Wecker Frisch

MADE IN KOREA