

Petal Song

by Corrie Shebb



AVAILABLE SEPTEMBER 2023 | R-1
Last Call - April 1, 2023



Pink Main



Amethyst Roses



Cranberry Cameo Floral



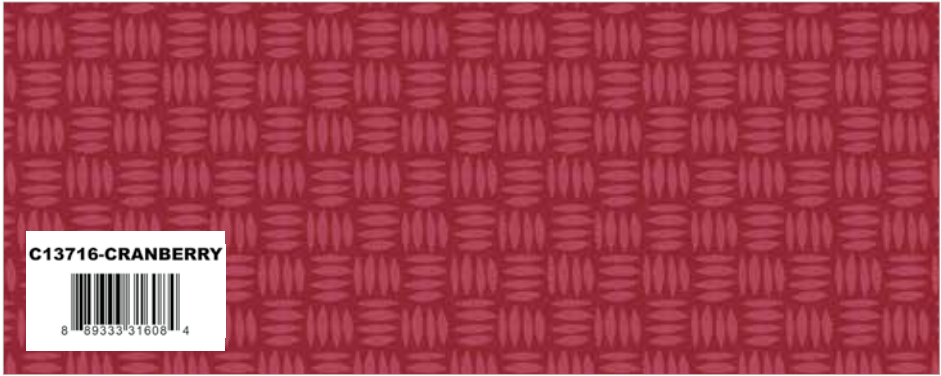
Pink Tossed Posies



Cranberry Fuzzy Navel



Cranberry Fireflies



Cranberry Basket Weave



Butterscotch Tina Bee Gingham



Plum Bee Cross Stitch Reversed



Petal Pink Solid



Riley Burgundy Solid



Blush Main



Blush Roses



Marmalade Cameo Floral



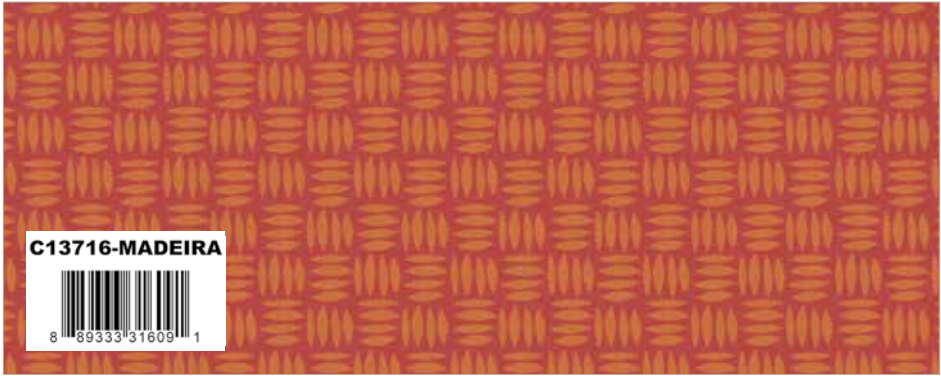
Honey Tossed Posies



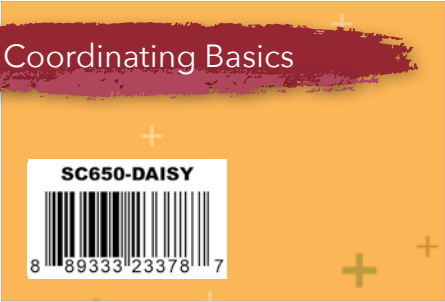
Pink Fuzzy Navel



Honey Fireflies



Madeira Basket Weave



Daisy Sparkler



Autumn Zinnia Bee Plaids



Autumn Shabby



Autumn Dapple Dot



Amethyst Main



Pink Roses



Amethyst Cameo Floral



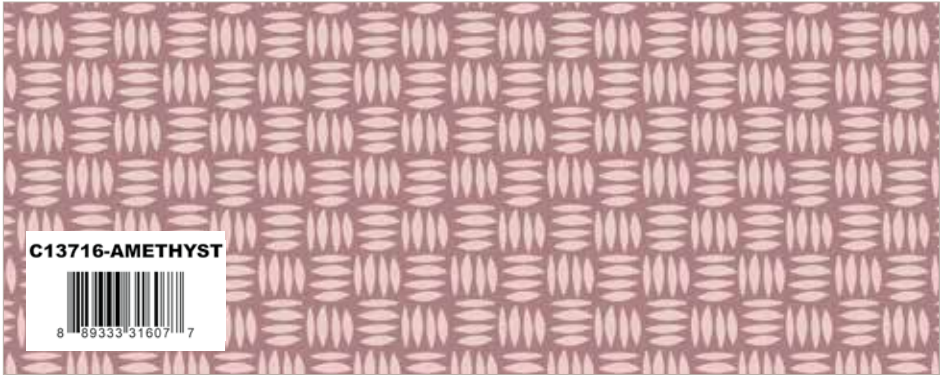
Wine Tossed Posies



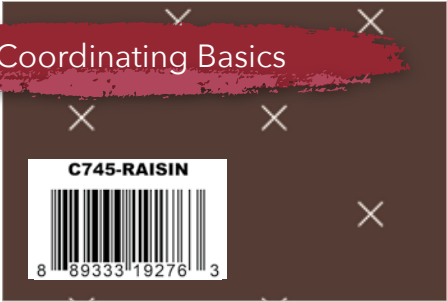
Blush Fuzzy Navel



Blush Fireflies



Amethyst Basket Weave



Raisin Bee Cross Stitch



Heather Texture



Heirloom Taffy Jennifer Bee Gingham



Tutu Shabby

Double Crossed by Amy Smart



Quilt Size 72" x 87"

Fabric Requirements

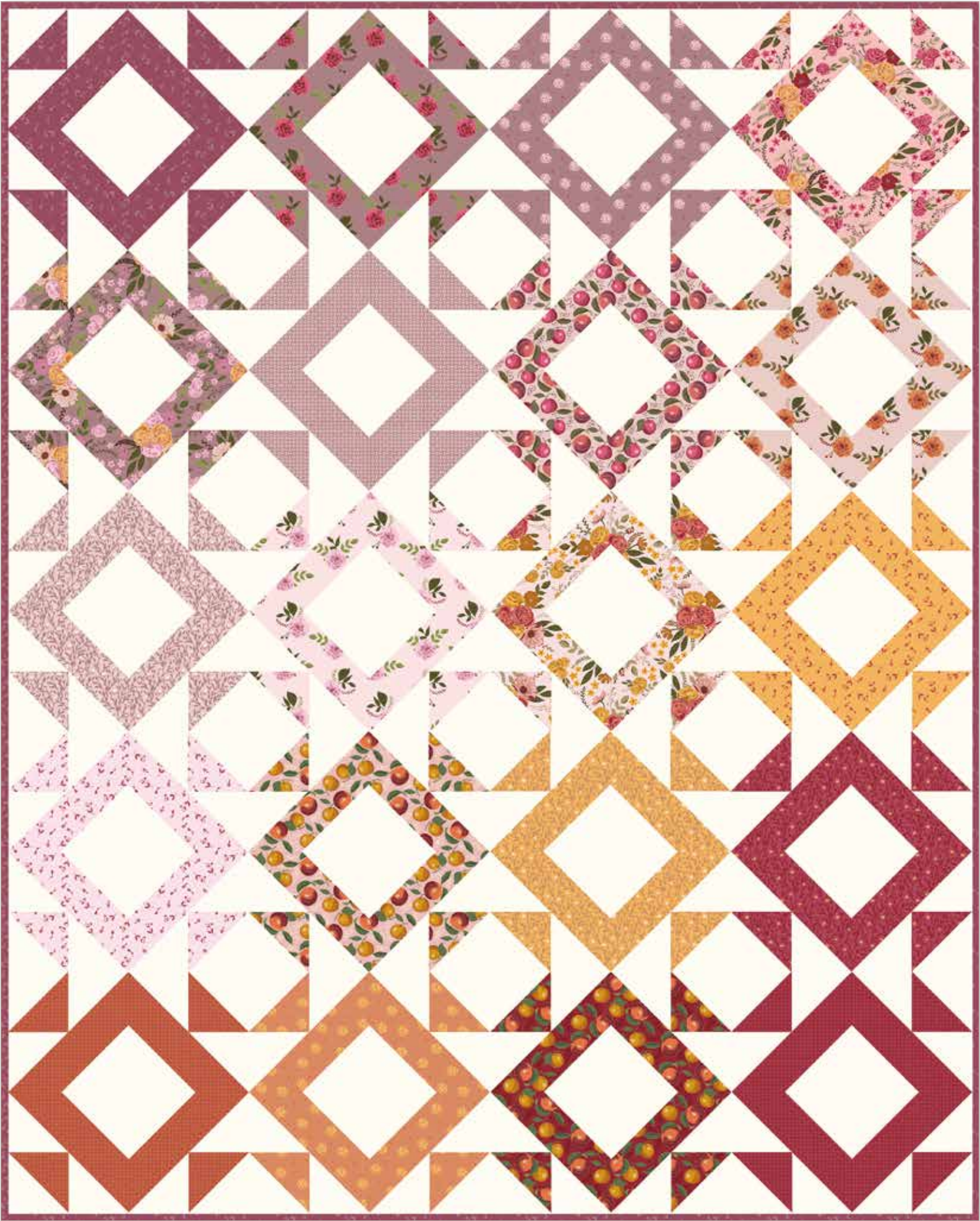
- 1 FQ-13710-21 Petal Song Fat Quarter Bundle
- 1 1/4 Yards C13710 Pink Main
- 2 1/4 Yards C120 Piña Colada Solid
- 5/8 Yard C13712 Cranberry Cameo Floral (Binding)



Pre-order the
P123-DOUBLECROSSED
Quilt Pattern



* **Approximate** fabric requirements are listed to aid in estimating the amount of yardage to order and are subject to change. The projects portrayed are virtual images. The look of the projects may differ when using actual fabric. The quilt virtual shown on this page may be different than the image shown on the pattern cover.



Quilt Size 36½" x 45½"

Fabric Requirements

1 FQ-13710-21 Petal Song Fat Quarter Bundle

1 1/8 Yards C650 Cream Dapple Dot

1/3 Yard C13713 Wine Tossed Posies (Includes Binding)

Free Pattern will be available at:
www.rileyblakedesigns.com/free-quilt-patterns

* **Approximate** fabric requirements are listed to aid in estimating the amount of yardage to order and are subject to change. The projects portrayed are virtual images. The look of the projects may differ when using actual fabric. The quilt virtual shown on this page may be different than the image shown on the pattern cover.



C13711 Amethyst Roses



C13712 Cranberry Cameo Floral



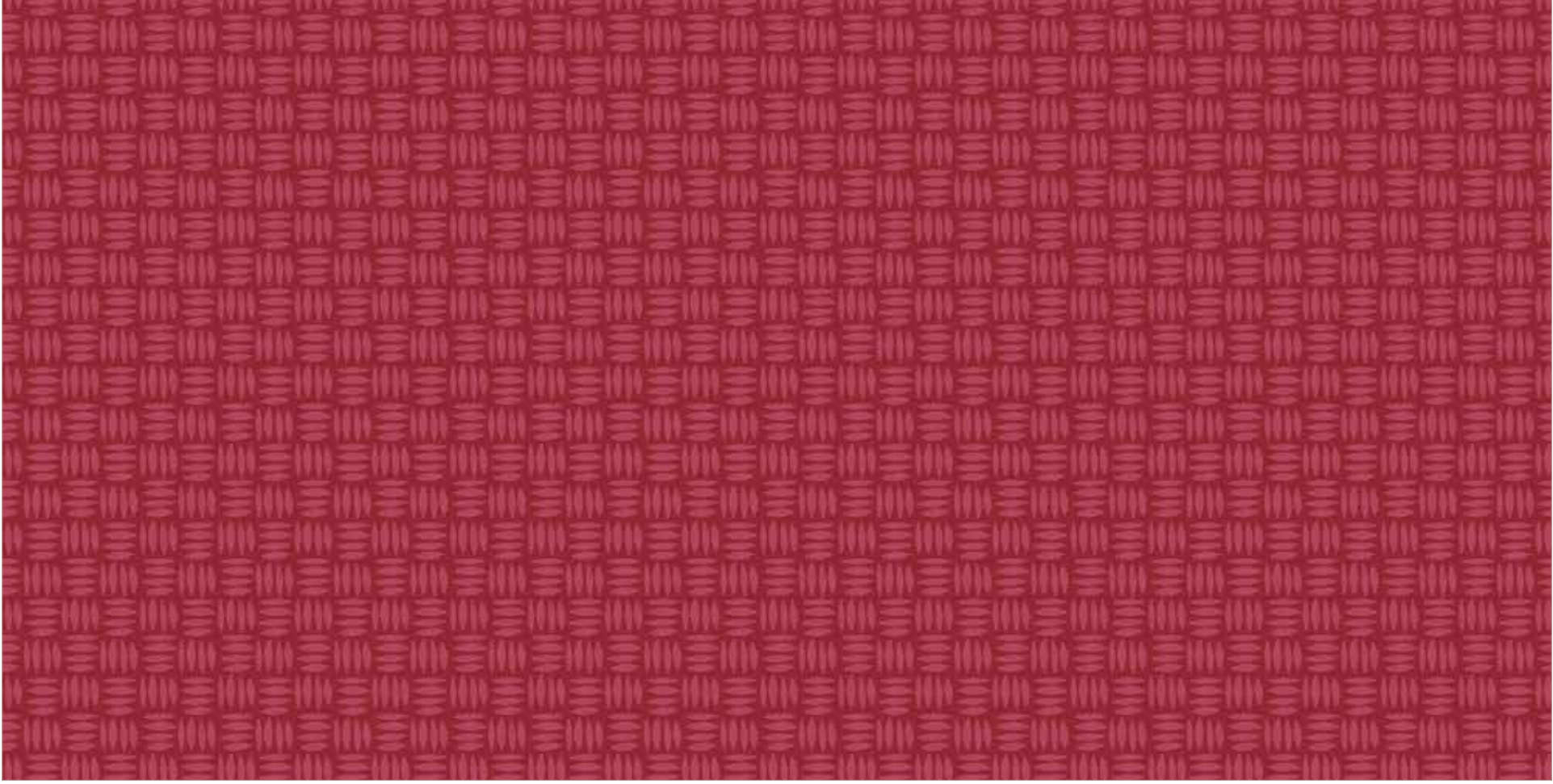
C13713 Pink Tossed Posies



C13714 Cranberry Fuzzy Navel



C13715 Cranberry Fireflies



C13716 Cranberry Basket Weave





About the Line

Petal Song is inspired by, and dedicated to, my late grandmother, Maxine. Her love of roses, vintage collectibles, cranberry and mauve, along with her signature Fuzzy Navel drink are harmonized in this collection; harmonized, as they were in life by her love, and, I can only hope, in a manner that nearly recreates her delicate touch and grace while properly paying tribute to her memory. What is old can be made new; sometimes it takes a cocktail to hear the antique melody of this spring's growth, and other times you can hear it in the stillness of a pattern such as these.

Corri Sheff
@corri_sheff

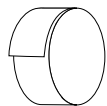
Precuts



FFYD-13710



Flat Fold Bundle
25 Yards



RP-13710-40



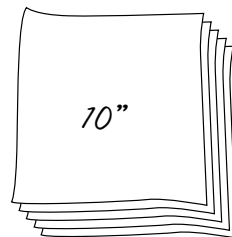
Rolie Polie
40 Pieces



5-13710-42



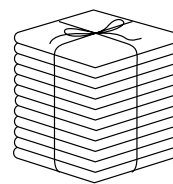
5-Inch Stacker
42 Pieces



10-13710-42



10-Inch Stacker
42 Pieces



FQ-13710-21



Fat Quarter Bundle
21 Pieces

Pre-Order Only

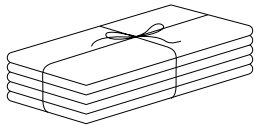
ADD ANY LAMINATE WITH 100 YARDS MINIMUM



1YD-13710A-7



Amethyst - 1-Yard Bundle
7 Pieces



1YD-13710B-7



Blush - 1-Yard Bundle
7 Pieces



1YD-13710P-7



Pink - 1-Yard Bundle
7 Pieces

CP10-13710-21



10-Yard Case Pack

CP15-13710-21



15-Yard Case Pack

Available September 2023 — Last Call April 1, 2023

100% FINE COTTON 43/44" WIDE • MACHINE WASH COLD • NO CHLORINE BLEACH • TUMBLE DRY LOW • REMOVE PROMPTLY

RILEY BLAKE DESIGNS • 9646 SOUTH 500 WEST, SANDY, UTAH 84070 • TOLL FREE 1.888.768.8454 • TEL 801.816.0540 • WWW.RILEYBLAKEDESIGNS.COM

NOT INTENDED FOR CHILDREN'S SLEEPWEAR

©2023 RILEY BLAKE DESIGNS AND CORRI SHEFF

MADE IN KOREA