

Riley Blake DESIGNS

INTRODUCES



AVAILABLE
APRIL 2021
R-4



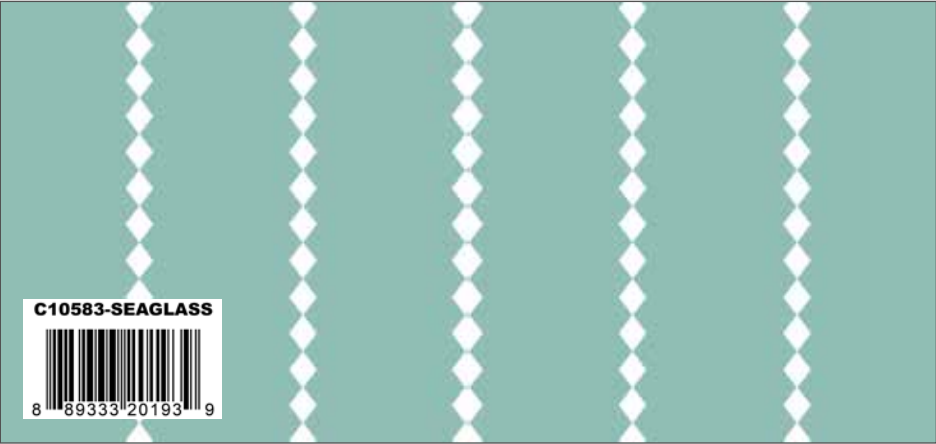
Mint Poppy Posey Main



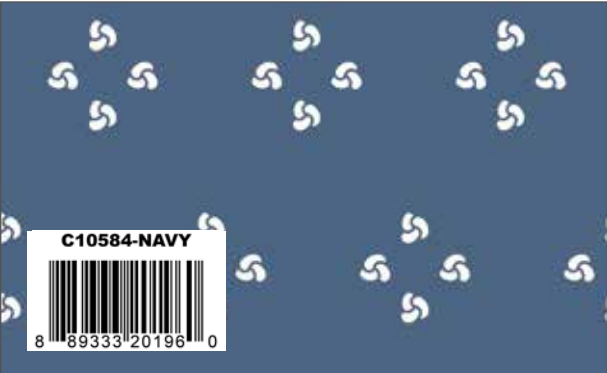
Navy Poppy Posey Garden



Mint Poppy Posey Buds



Sea Glass Poppy Posey Stripes



Navy Poppy Posey French Knots



Teal Poppy Posey Leaves



Teal Poppy Posey Butterflies



Coral Swiss Dot Reversed



Songbird Solid



Sea Glass Bee Cross Stitch



Navy Shabby



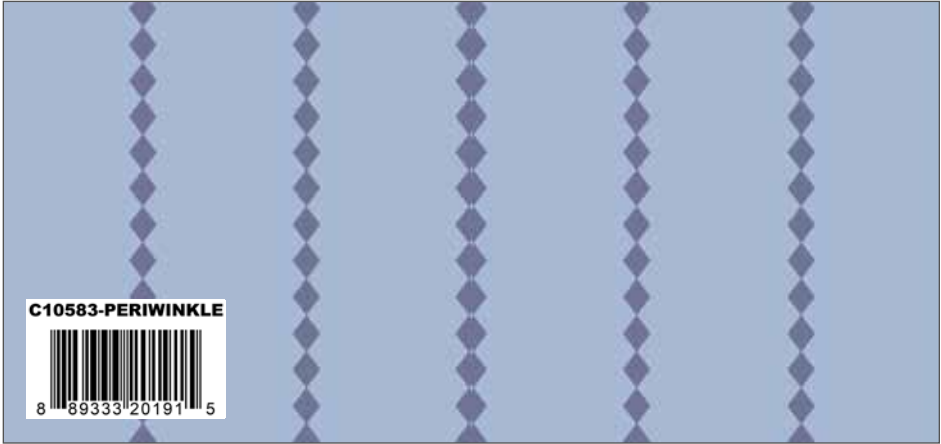
Amethyst Poppy Posey Main



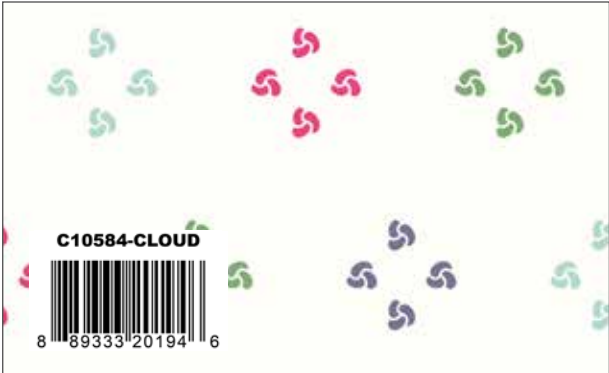
Mint Poppy Posey Garden



Amethyst Poppy Posey Buds



Periwinkle Poppy Posey Stripes



Cloud Poppy Posey French Knots



Amethyst Poppy Posey Leaves



Periwinkle Poppy Posey Butterflies



Serenity Shades



Violet Blue Gem Stones



Songbird Bee Basics Heart



Super Pink Pin Drop



Cloud Poppy Posey Main



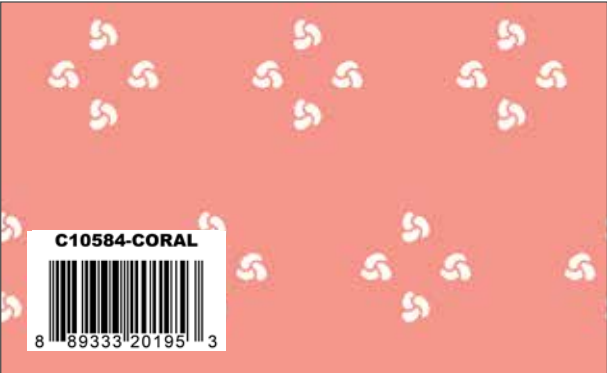
Cloud Poppy Posey Garden



Coral Poppy Posey Buds



Green Poppy Posey Stripes



Coral Poppy Posey French Knots



Green Poppy Posey Leaves



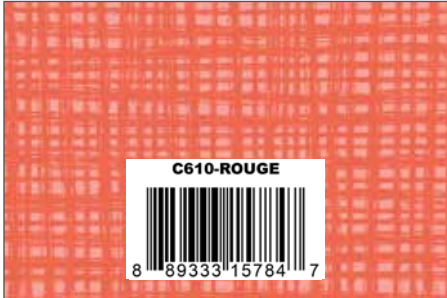
Coral Poppy Posey Butterflies



Coral Bee Cross Stitch Reversed



Salmon Pin Drop



Rouge Texture



Green Smoothie Blossom



Mint Garden Apron Panel



Amethyst Garden Apron Panel

Scaled to 20% | Actual Size is 43 1/2" x 36"

Circle of Friends by Dodi Poulsen



Quilt Size 68" x 68"

Fabric Requirements

- 2 Yards C10580 Periwinkle Main

1/8 Yard C10582 Amethyst Buds

3/8 Yard C10582 Coral Buds

3/8 Yard C10582 Mint Buds

1/2 Yard C10583 Periwinkle Stripes (Binding)

2 1/2 Yards C10584 Cream French Knots
- 1/4 Yard C10585 Green Leaves

3/8 Yard C10585 Periwinkle Leaves

1/8 Yard C10585 Teal Leaves

1/4 Yard C10586 Coral Butterflies

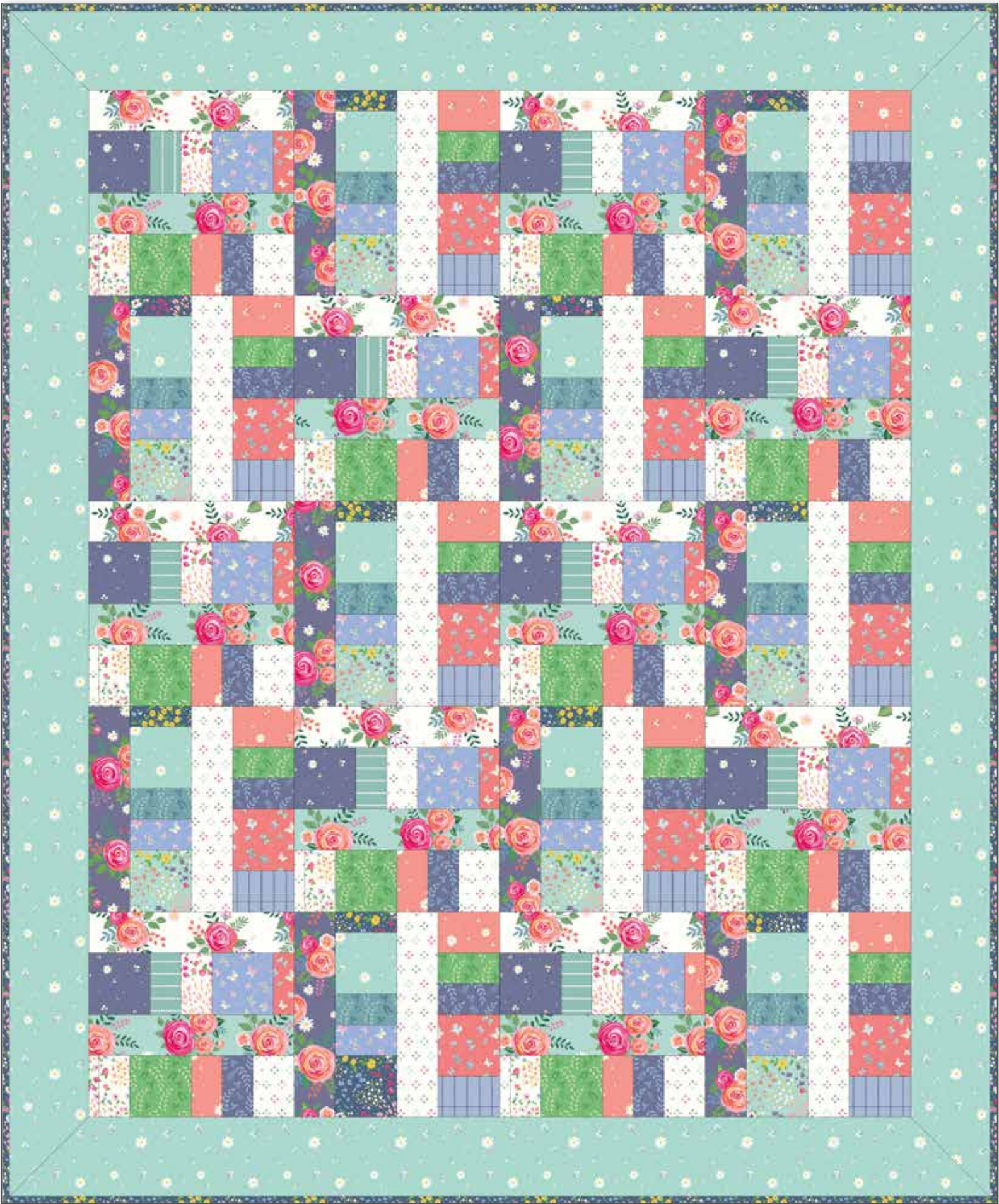
1/8 Yard C10586 Periwinkle Butterflies

1/4 Yard C10586 Teal Butterflies



Pre-order the
P023 Circle of Friends
Quilt Pattern

Farmers Market by Dodi Poulsen



Quilt Size 68 1/2" x 83"

Fabric Requirements

1 Fat Quarter of Each:

- C10581 Cloud Garden
- C10581 Mint Garden
- C10582 Coral Buds
- C10582 Periwinkle Buds
- C10583 Periwinkle Stripes
- C10583 Seaglass Stripes

- C10585 Green Leaves
- C10585 Periwinkle Leaves
- C10585 Teal Leaves
- C10586 Coral Butterflies
- C10586 Periwinkle Butterflies

Other Fabrics:

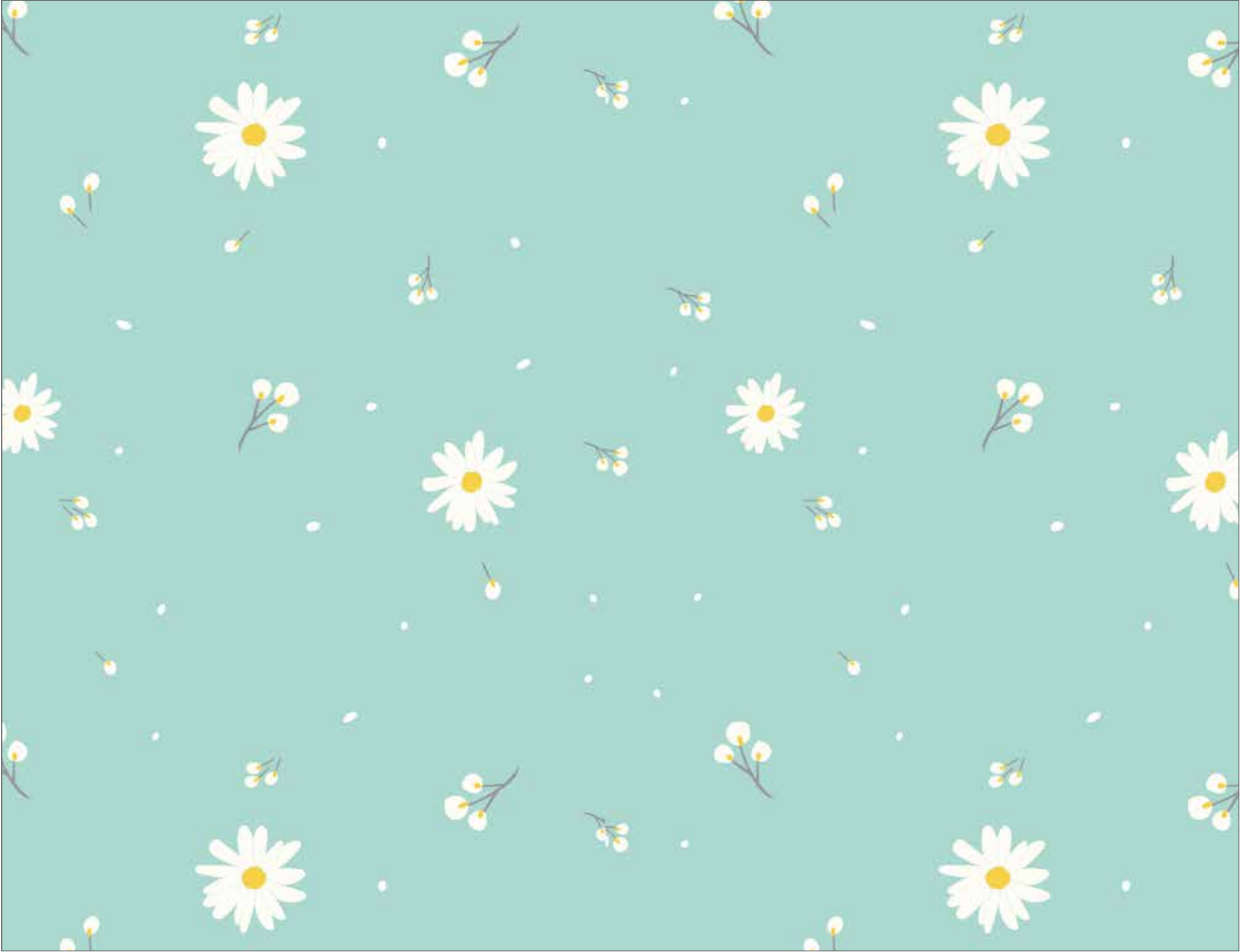
- 1/2 Yard C10580 Amethyst Main
- 1/2 Yard C10580 Cloud Main
- 1/2 Yard C10580 Mint Main
- 3/4 Yard C10581 Navy Garden (Includes Binding)
- 1 7/8 Yards C10582 Mint Buds
- 3/4 Yard C10584 Cloud French Knots



Pre-order the
P023 Farmers Market
Quilt Pattern



C10581 Navy Poppy Posey Garden



C10582 Mint Poppy Posey Buds



C10580 Amethyst Poppy Posey Main

Shown as Repeat 44" x 36"

About the Line



Dodi Poulsen
@sashgal

After returning from the 1st annual Garden of Quilts, I was elated to have been in attendance and honored to have taught classes. Ashton Gardens at Thanksgiving Point became my inspiration for a new line of fabric as the breathtaking beauty of the flowers and the gardens touched my heart. Watching hundreds of people walk through these gardens with hundreds of quilts blowing in the breeze was an experience that one would not soon forget.

The name for my new line, Poppy & Posey, was born while searching Pinterest one evening where I found vintage seed packets. These packets were such beautiful works of art, and I was amused by the term “Seedsmen” on some of them. I decided that Poppy & Posey would be the new generation “Seedgals” with their wildflower packet.

Small miracles take place all year long as floral displays dot landscapes throughout the world. To all those garden stewards whose efforts, time, and talents create visions of beauty for all to enjoy, I am forever indebted and so grateful for you!

PRECUTS

Flat Fold Bundle
25 Yards



5-Inch Stacker
42 Pieces



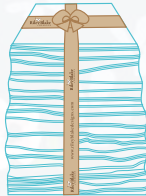
10-Inch Stacker
42 Pieces



Rolie Polie
40 Pieces



Fat Quarter



PRE-ORDER ONLY

ADD ANY LAMINATE WITH 100 YARDS MINIMUM

10-Yard Case Pack



15-Yard Case Pack



Mint - 1 Yard Bundle
8 Pieces



Amethyst - 1 Yard Bundle
8 Pieces



Cloud - 1 Yard Bundle
8 Pieces



AVAILABLE APRIL 2021

100% FINE COTTON 43/44" WIDE • MACHINE WASH COLD • NO CHLORINE BLEACH • TUMBLE DRY LOW • REMOVE PROMPTLY

Riley Blake Designs • 9646 South 500 West, Sandy, Utah 84070
Toll Free 1.888.768.8454 • Tel 801.816.0540 • Fax 801.816.0542
www.rileyblakedesigns.com

Not intended for children’s sleepwear
©2020 Riley Blake Designs and Dodi Poulsen
MADE IN KOREA