

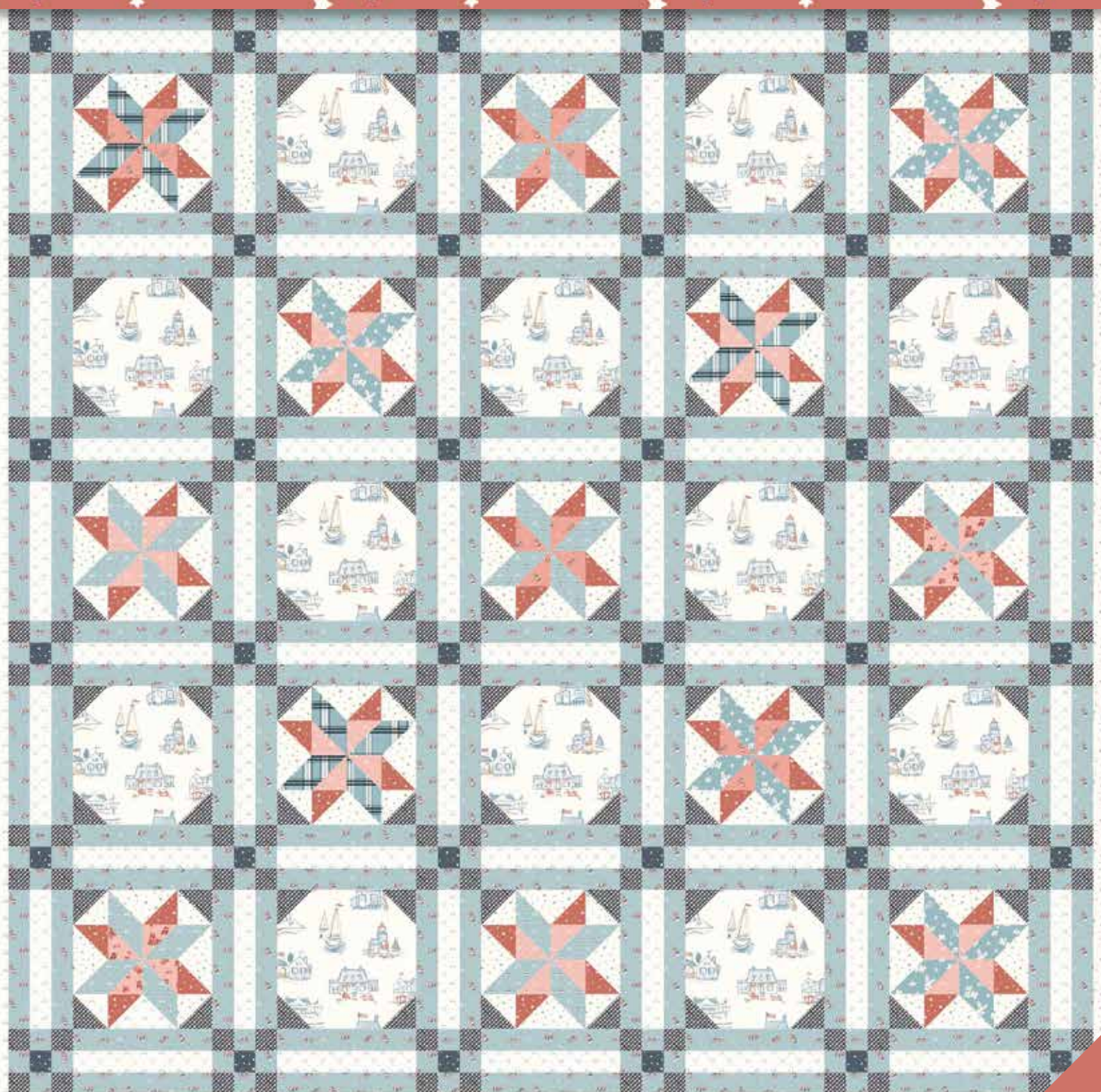


INTRODUCES



# PORTSMOUTH

BY AMY SMART

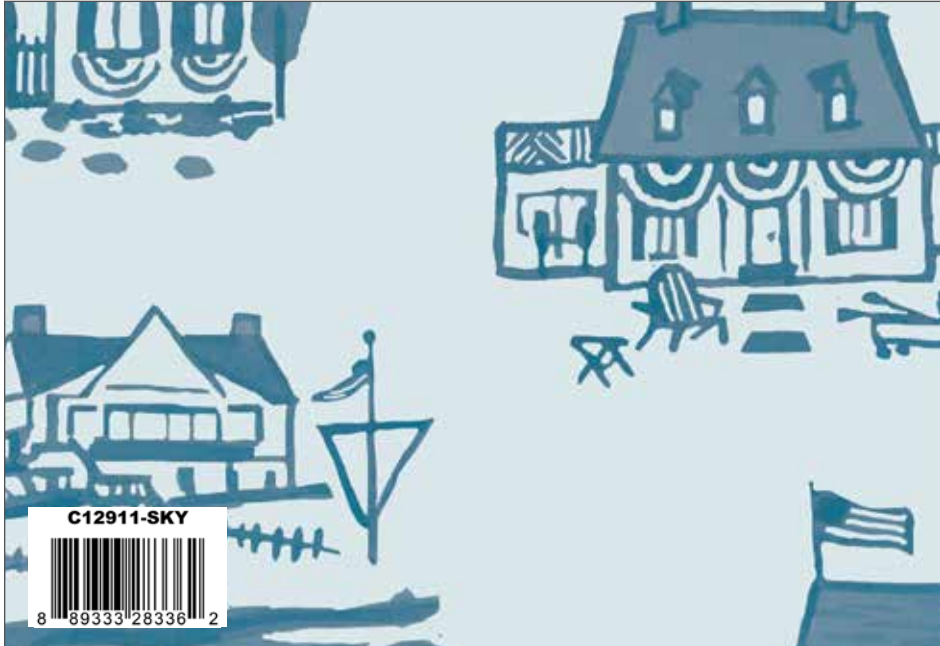


AVAILABLE  
FEBRUARY 2023  
R-3





Oxford Portsmouth Main



Sky Portsmouth Seaside



Dream Portsmouth Plaid



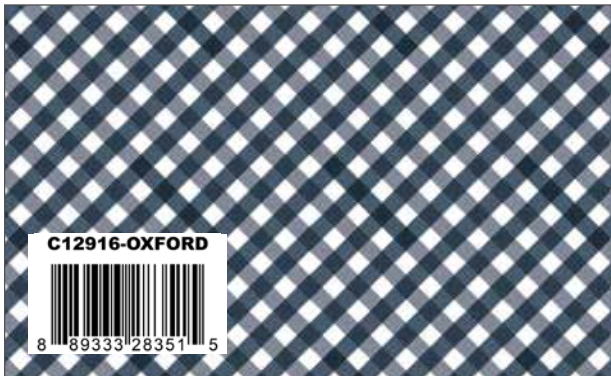
Dream Portsmouth Ditsy Blooms



Dream Portsmouth Oars & Life Preservers



Cloud Portsmouth Nautical Stripes



Oxford Portsmouth Gingham



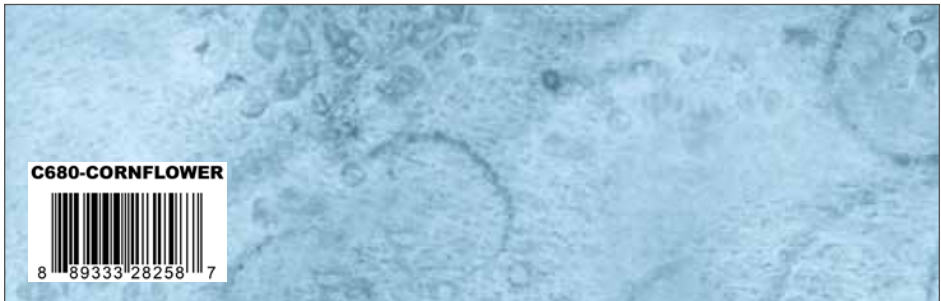
Cloud Portsmouth Flags



Oxford Portsmouth Stars



Oxford Blossom

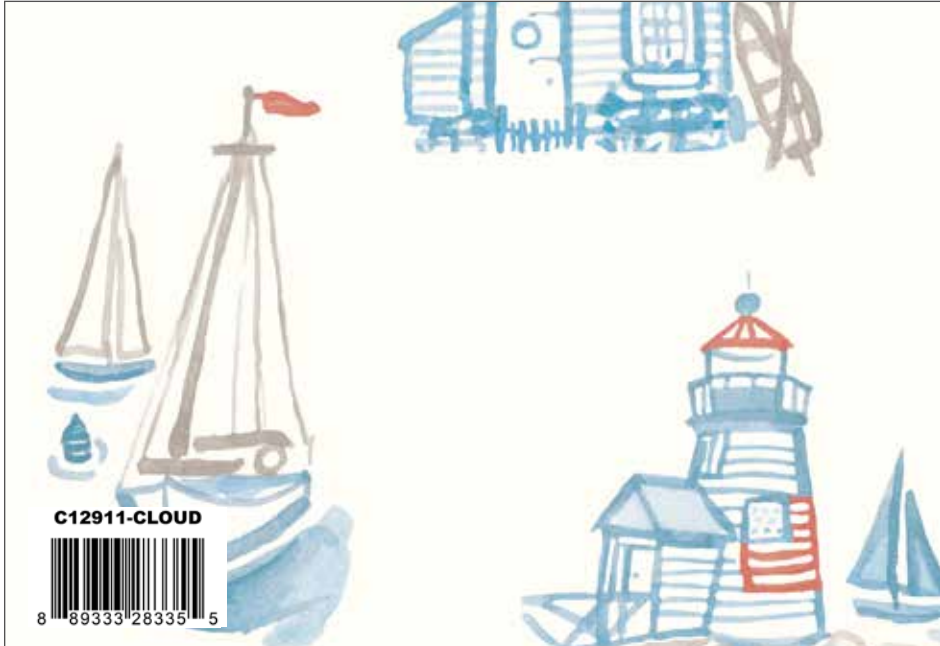


Cornflower Swirl

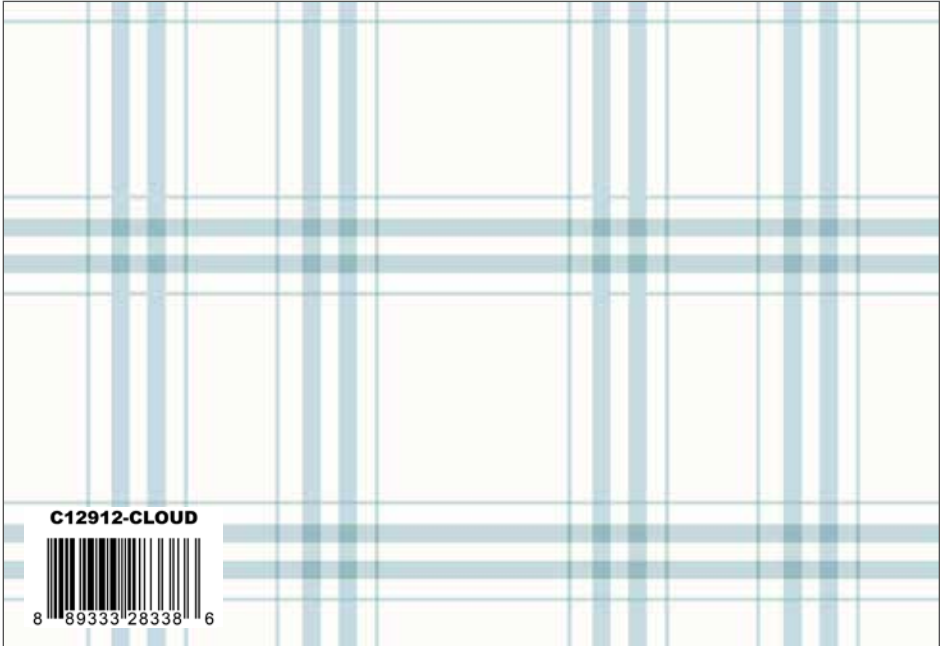




Cloud Portsmouth Main



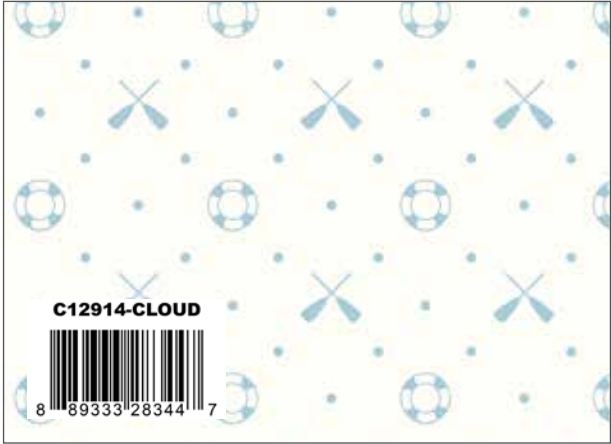
Cloud Portsmouth Seaside



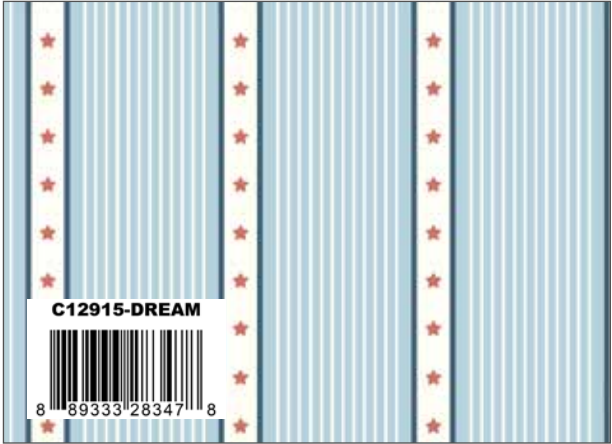
Cloud Portsmouth Plaid



Cloud Portsmouth Ditsy Blooms



Cloud Portsmouth Oars & Life Preservers



Dream Portsmouth Nautical Stripes



Pewter Portsmouth Gingham



Dream Portsmouth Flags



Cloud Portsmouth Stars



Pebble Bee Cross Stitch



Frost Floret





Red Portsmouth Main



Red Portsmouth Seaside



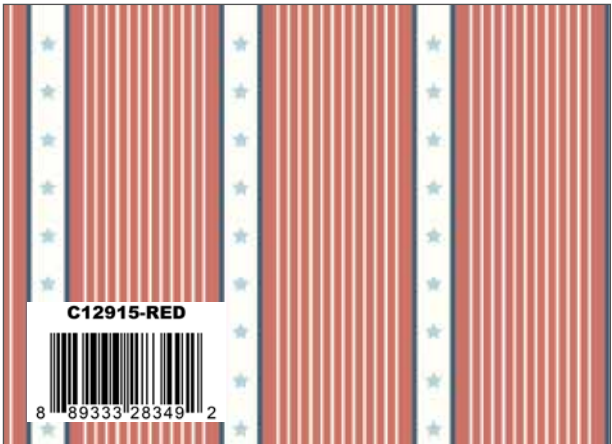
Red Portsmouth Plaid



Blush Portsmouth Ditsy Blooms



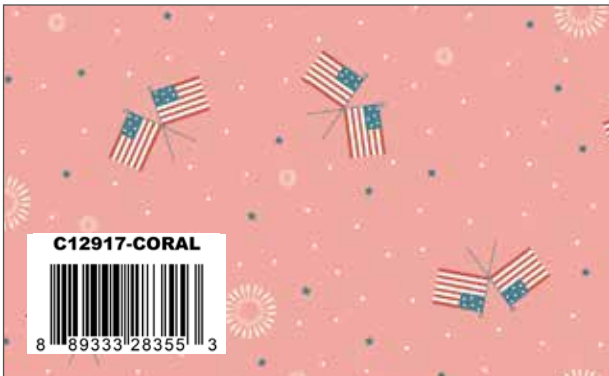
Blush Portsmouth Oars & Life Preservers



Red Portsmouth Nautical Stripes



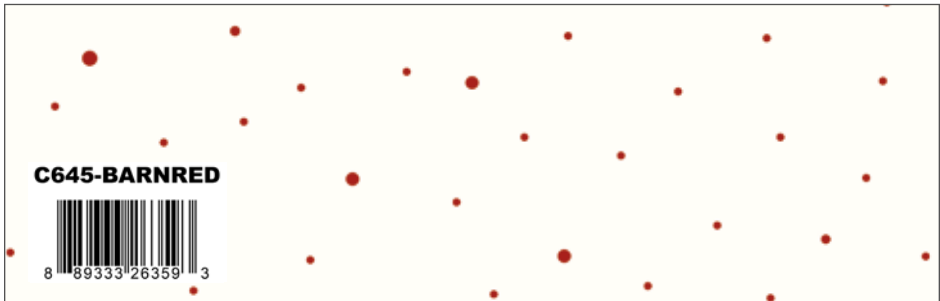
Red Portsmouth Gingham



Coral Portsmouth Flags



Red Portsmouth Stars



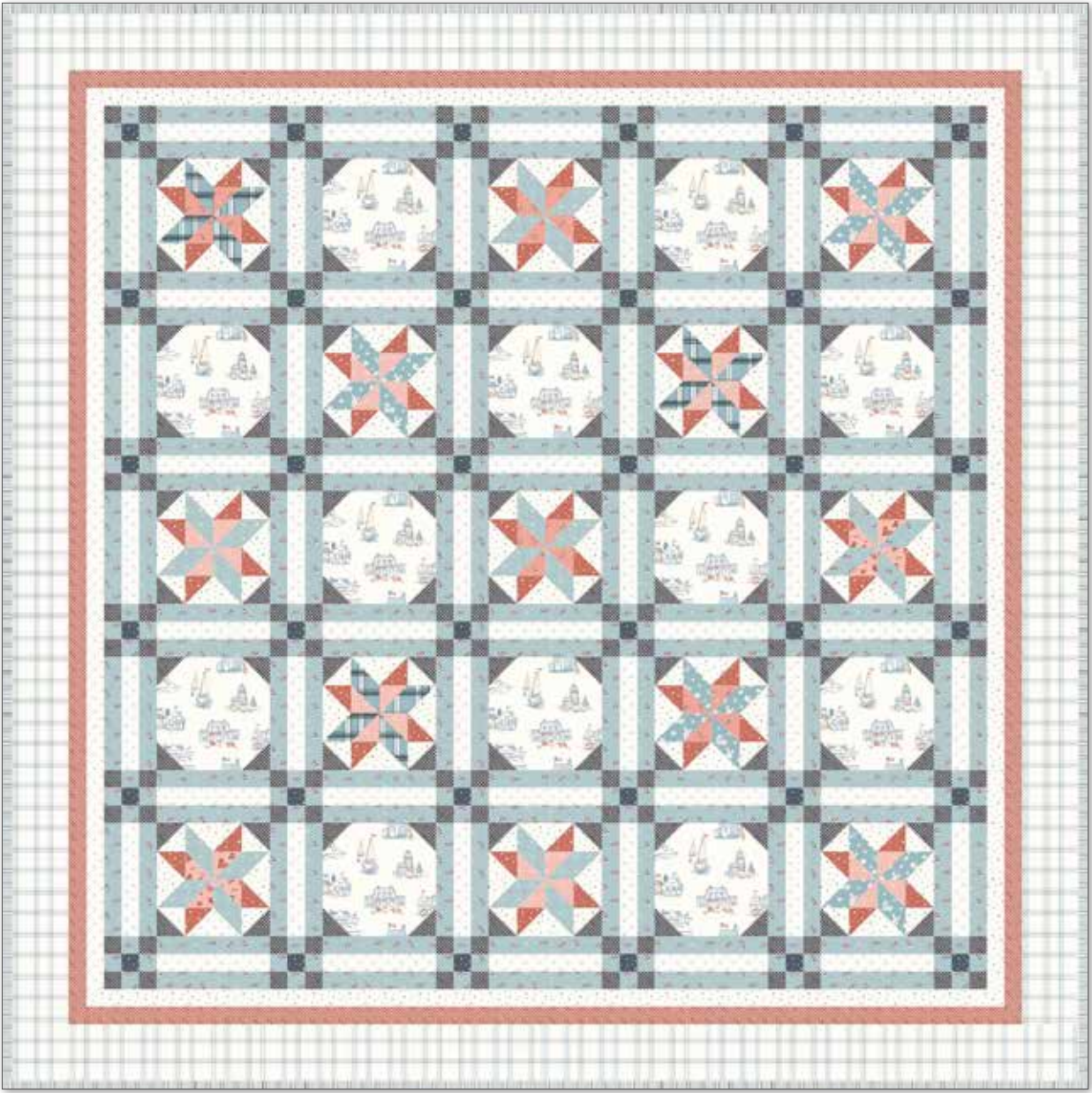
Barn Red Dapple Dot (Reversed)



Barn Red Bee Cross Stitch



New Castle Beach by Amy Smart



Quilt Size 75" x 75"

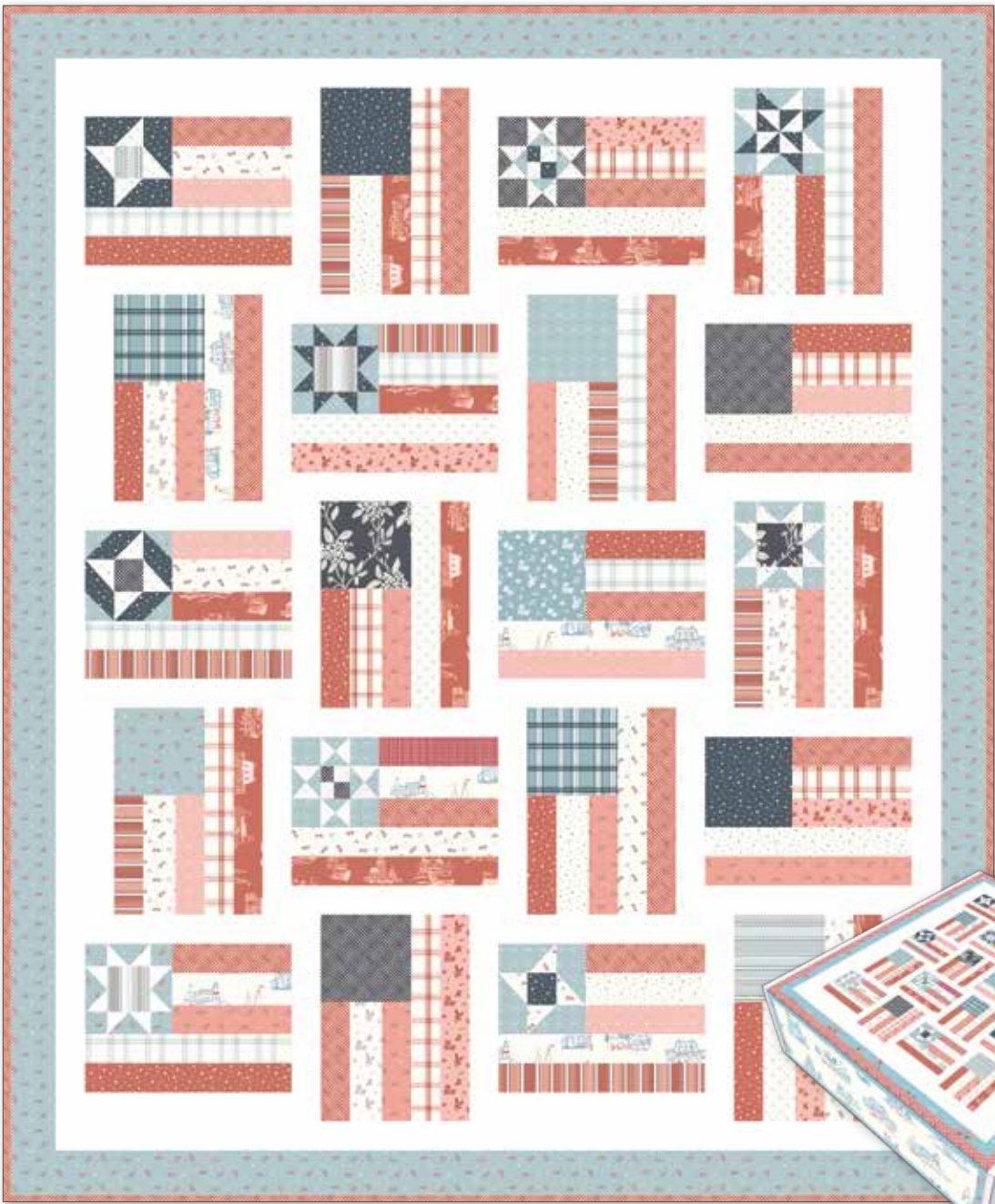
Fabric Requirements

- 3/4 Yard C12911 Cloud Seaside
- 1 Yard C12912 Cloud Plaid
- 1/8 Yard C12912 Dream Plaid
- 1/8 Yard C12913 Blush Ditsy Blooms
- 1/8 Yard C12913 Dream Ditsy Blooms
- 1/8 Yard C12914 Blush Oars & Life Preserve
- 1 1/4 Yards C12914 Cloud Oars & Life Preservers
- 1/8 Yard C12914 Dream Oars & Life Preservers
- 5/8 Yard C12915 Dream Nautical Stripe (Binding)
- 3/4 Yard C12916 Oxford Gingham
- 3/8 Yard C12916 Red Gingham
- 1/8 Yard C12917 Coral Flags
- 2 Yards C12917 Dream Flags
- 5/8 Yard C12918 Cloud Stars
- 1/8 Yard C12918 Oxford Stars
- 1/4 Yard C12918 Red Stars



Pre-order the  
P123 New Castle Beach  
Quilt Pattern

Fly the Flag by Amy Smart



Quilt Size 66" x 80"

Fabric Requirements

- 4-8 Fat Quarters or
- 1/4 Yard of Assorted Shades of Blue
- 20 - Precut 2 1/2" x 42" Strips or
- 1/4 Yard Each of 7 Assorted Red/Coral/Blush Prints
- 20 - Precut 2 1/2" x 42" Strips or
- 1/4 Yard Each of 7 Assorted Cloud Prints
- 5/8 Yard C12916 Red Gingham (Binding)
- 7/8 Yard C12917 Dream Flags
- 1 5/8 Yards C120 Cloud Solid



Pre-order the  
P123 Fly the Flag  
Quilt Pattern

Box Size  
Approx: 11" x 12" x 3 1/2"

\*Kit includes pattern  
and fabric for  
quilt top and binding

Available March 2023

Pre-order the  
Fly the Flag  
Quilt Kit

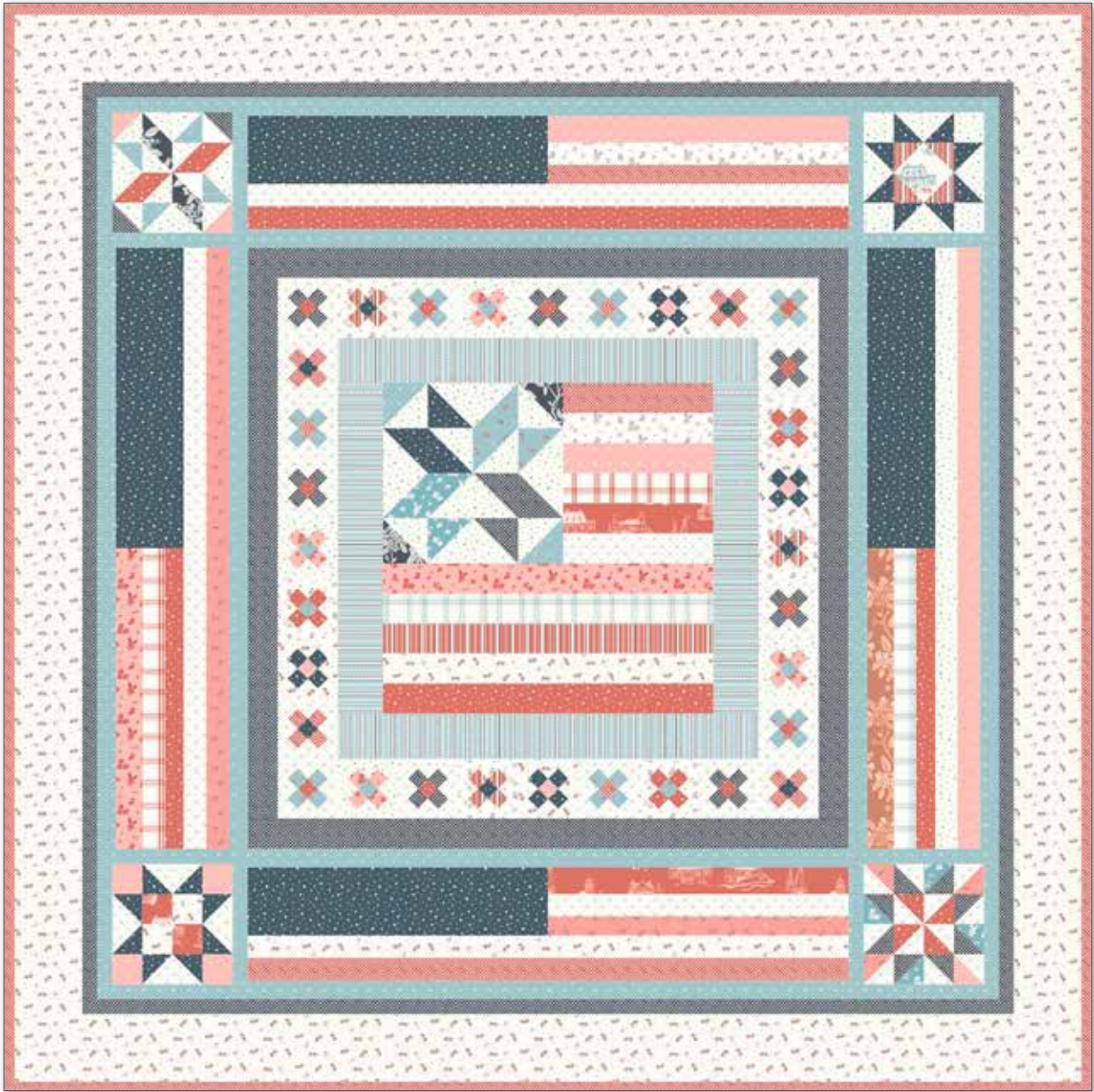
KT-12910



\* Approximate fabric requirements are listed to aid in estimating the amount of yardage to order and are subject to change.



Land that I Love by Amy Smart



Quilt Size 70" x 70"

Fabric Requirements

- 1/2 Yard Each of 5 Assorted Red/Pink Prints
- 1/2 Yard Each of 5 Assorted Cloud Background Prints
- 3/8 Yard Each of 2 Dream Prints
- 3/4 Yard C12914 Dream Oars & Life Preservers
- 3/8 Yard C12915 Dream Nautical Stripe
- 1 Yard C12916 Oxford Gingham
- 3/4 Yard C12916 Red Gingham (Binding)
- 1 Yard C12917 Cloud Flags
- 3/4 Yard C12918 Oxford Star



Pre-order the  
P123 Land that I Love  
Quilt Pattern

Sugarhouse Star by Amy Smart



Quilt Size 78" x 78"

Fabric Requirements

- 1/6 Yard Each of 3 Assorted Oxford Prints or  
5 - 10" x 10" Squares
- 1/6 Yard Each of 3 Assorted Dream Prints or  
5 - 10" x 10" Squares
- 1/6 Yard Each of 3 Assorted Red Prints or  
5 - 10" x 10" Squares
- 1/6 Yard Each of 3 Assorted Pink Prints or  
5 - 10" x 10" Squares
- 1 3/8 Yard C12915 Dream Nautical Stripe
- 5/8 Yard C12916 Oxford Gingham (Binding)
- 3 Yards C12918 Cloud Stars
- 3/8 Yard C12918 Red Stars



Pre-order the  
P123 Sugarhouse Star  
Quilt Pattern

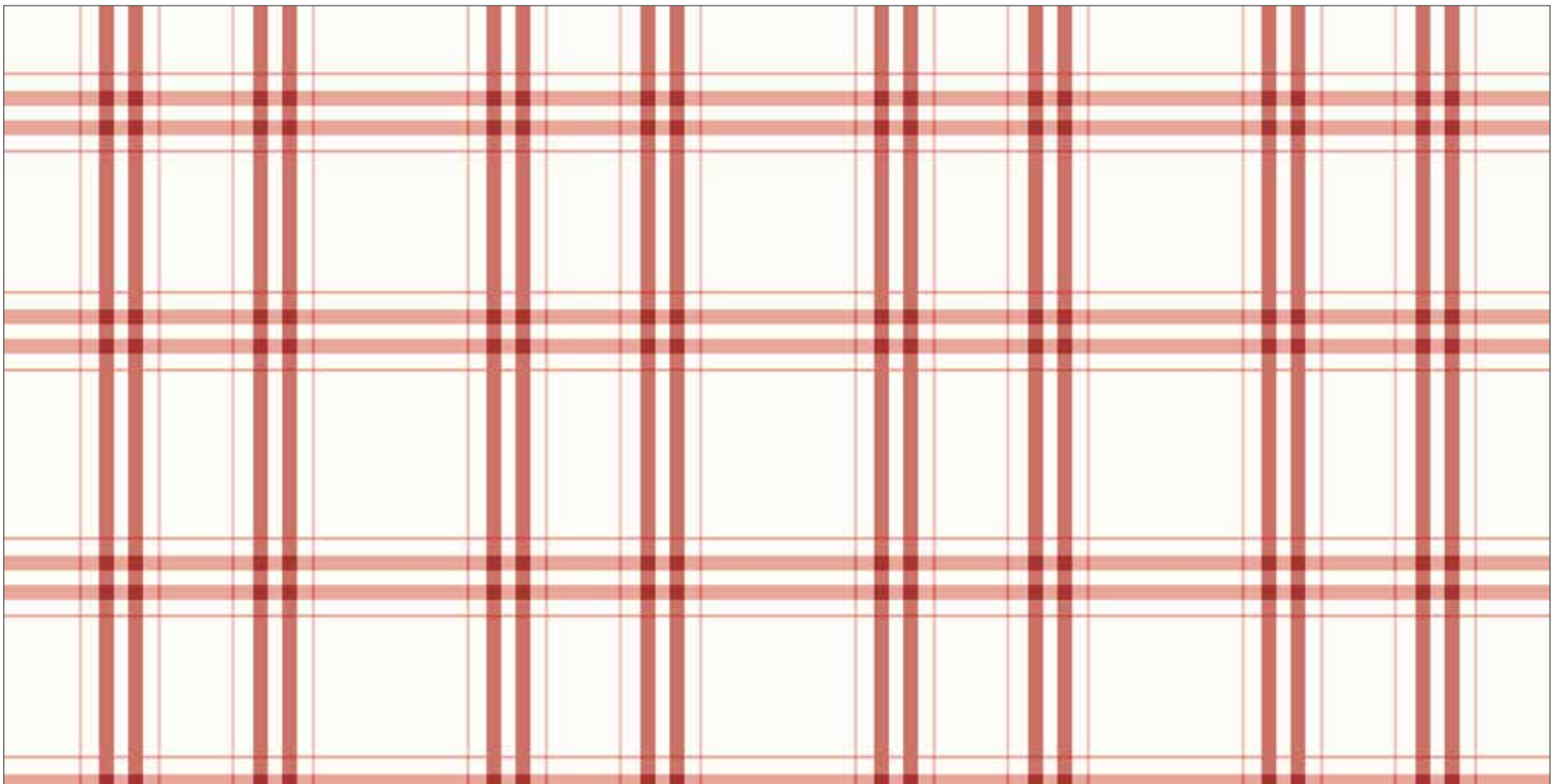
\* Approximate fabric requirements are listed to aid in estimating the amount of yardage to order and are subject to change.





C12911 Cloud Portsmouth Seaside

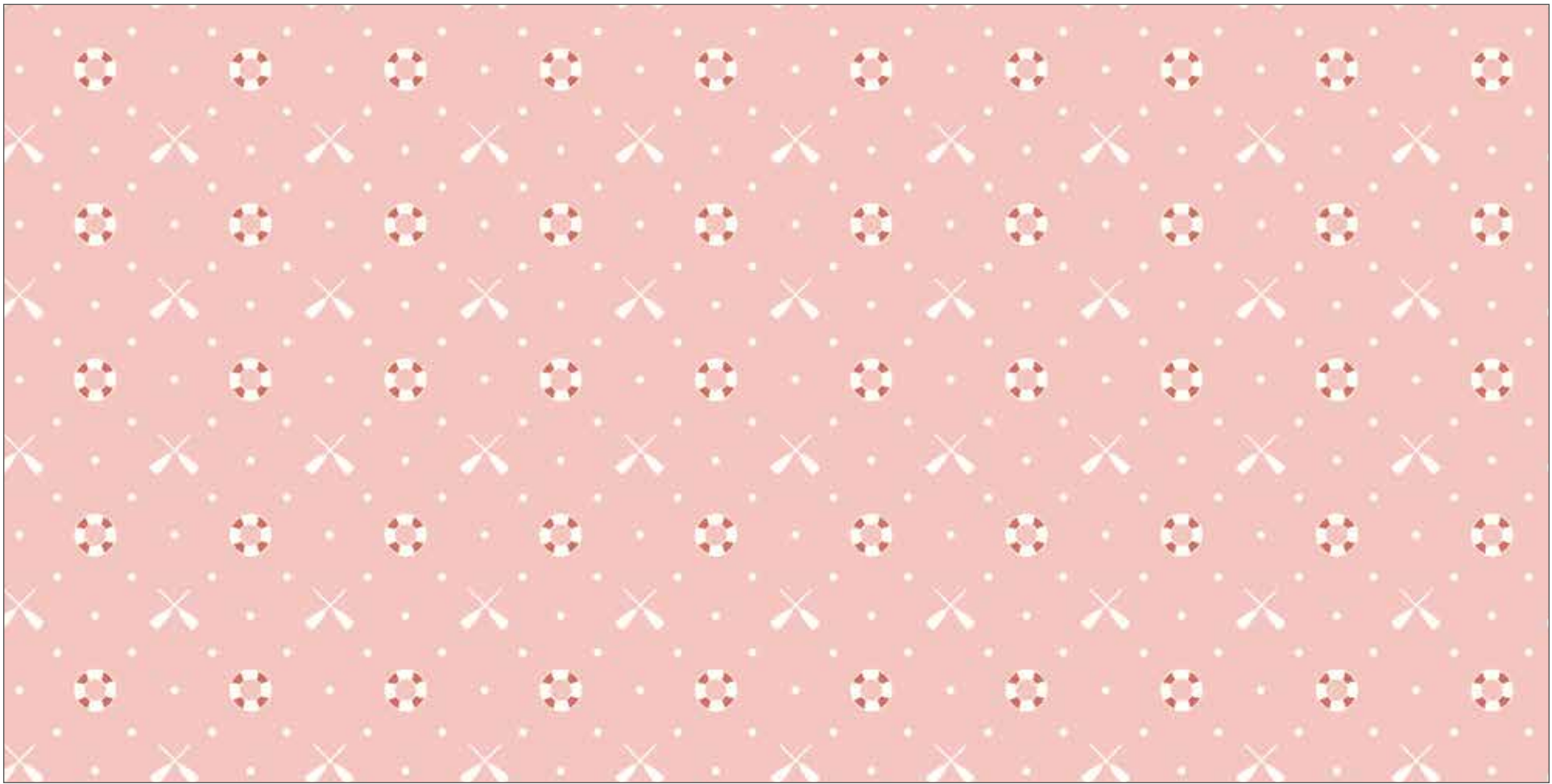




C12911 Red Portsmouth Plaid



C12912 Dream Portsmouth Ditsy Blooms



C12913 Blush Portsmouth Oars & Life Preservers





C12910 Red Portsmouth Main

Shown as Repeat 44" x 36"



About the Line



Amy Smart  
@diaryofaquilter

Portsmouth, New Hampshire might be one of my favorite places on the planet. Twenty-five years ago I married into a New England family - my husband's parents and extended family are all from Portsmouth and southern Maine, right on the Atlantic coast. As a result I've been able to spend many summer vacations and family reunions soaking in the New England nautical perfection: beaches, sailboats, lighthouses, thriving hydrangeas, the smell of saltwater, and American flags and buntings hanging from colonial houses built before 1776.

This collection is inspired by faded vintage quilts at the beach, sand in your toes, celebrating summer and the 4th of July with flags and picnics, lobster rolls and barbecue, and ending the day with the perfect sunset.



PRECUTS

Flat Fold Bundle  
25 Yards

FFYD-12910



5-Inch Stacker  
42 Pieces



5-12910-42



10-Inch Stacker  
42 Pieces



10-12910-42



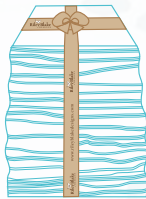
Rolie Polie  
40 Pieces



RP-12910-40



Fat Quarter



FQ-12910-27



PRE-ORDER ONLY

ADD ANY LAMINATE WITH 100 YARDS MINIMUM

10-Yard Case Pack

CP10-12910-27



15-Yard Case Pack

CP15-12910-27



Cloud - 1 Yard Bundle  
9 Pieces

1YD-12910C-9



Oxford - 1 Yard Bundle  
9 Pieces

1YD-12910O-9



Red - 1 Yard Bundle  
9 Pieces

1YD-12910R-9



AVAILABLE FEBRUARY 2023

100% FINE COTTON 43/44" WIDE • MACHINE WASH COLD • NO CHLORINE BLEACH • TUMBLE DRY LOW • REMOVE PROMPTLY

Riley Blake Designs • 9646 South 500 West, Sandy, Utah 84070

Toll Free 1.888.768.8454 • Tel 801.816.0540

www.rileyblakedesigns.com

Not intended for children's sleepwear

©2022 Riley Blake Designs and Amy Smart

MADE IN KOREA