

precious
petites

by Gerri Robinson
of Planted Seed Designs



available January 2025 | R-3
last call August 1, 2024



C15830-BLUE



Blue Main



C15831-AQUA



Aqua Blossoms



C15832-ASH



Ash Roses



C15833-CORAL



Coral Bouquet



C15834-YELLOW



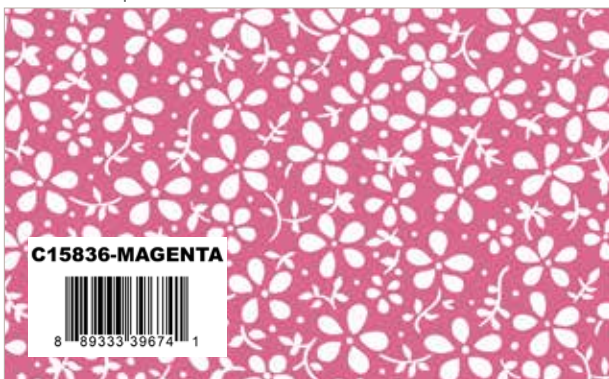
Yellow Garden



C15835-PINK



Pink Flowers



C15836-MAGENTA



Magenta Daisies



C15837-BLUE



Blue Gingham



C15837-CORAL



Coral Gingham



coordinating basics

C805-AQUA



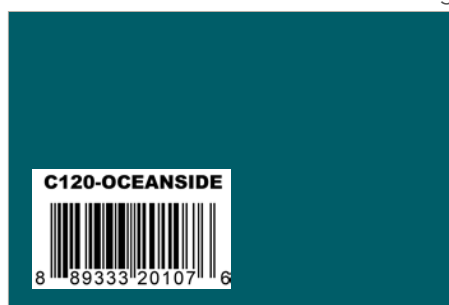
Aqua POParazzi



C715-PEACOCK



Peacock Blossom



C120-OCEANSIDE



Oceanside Confetti Cotton



C640-TICKLEPINK



Tickle Pink Dapple Dot



C15830-MINT



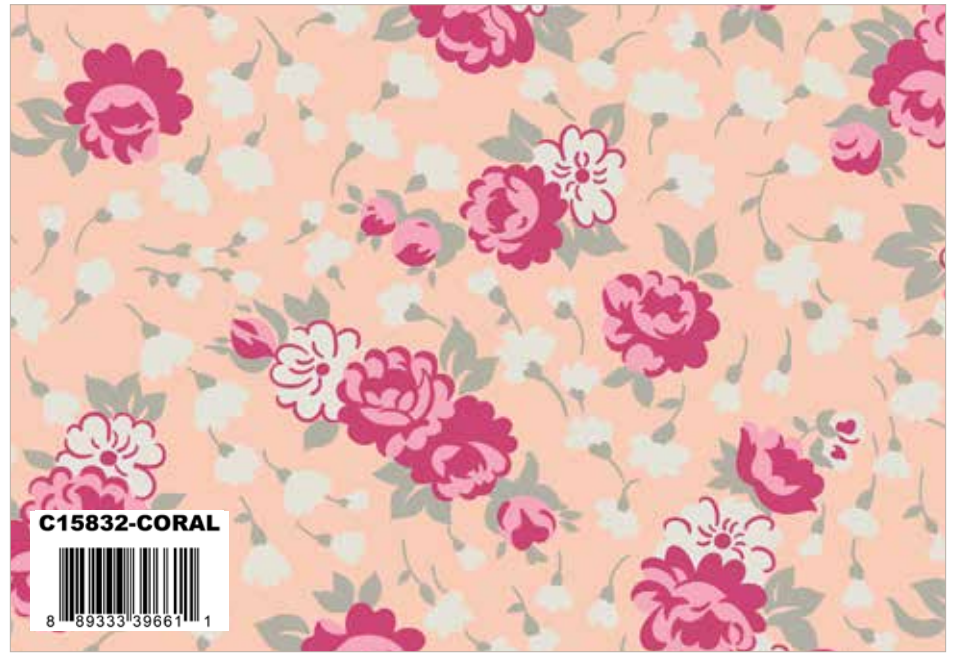
Mint Main



C15831-ASH



Ash Blossoms



C15832-CORAL



Coral Roses



C15833-MIST



Mist Bouquet



C15834-ASH



Ash Garden



C15835-YELLOW



Yellow Flowers



C15836-CORAL



Coral Daisies



C15836-SKY



Sky Daisies



C15837-MAGENTA



Magenta Gingham



C15837-CONFETTI



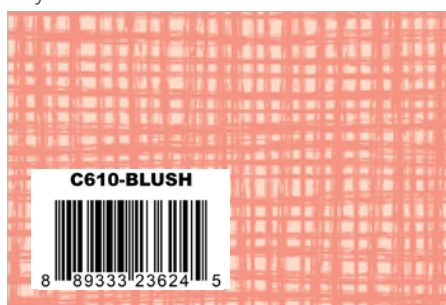
Confetti Gingham



C805-PEACHESNCREAM



Peaches 'n Cream POParazzi



C610-BLUSH



Blush Texture



C665-MINT



Mint Dainty Daisy



C715-BLEACHEDDENIM



Bleached Denim Blossom

coordinating basics



C15830-ASH



Ash Main



C15831-CORAL



Coral Blossoms



C15832-MIST



Mist Roses



C15833-YELLOW



Yellow Bouquet



C15834-WHITE



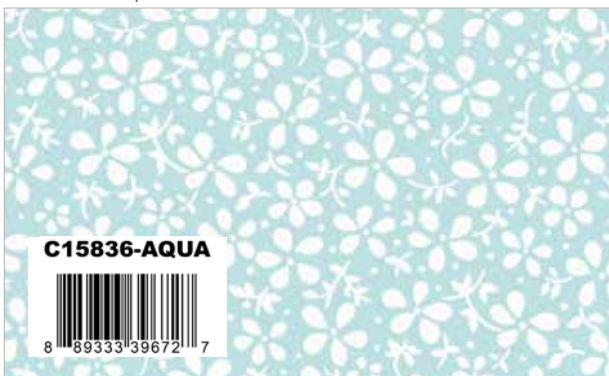
White Garden



C15835-ASH



Ash Flowers



C15836-AQUA



Aqua Daisies



C15837-VIVID



Vivid Gingham



C15837-PINK



Pink Gingham



coordinating basics

C805-SUNSHINE



Sunshine POParazzi



C120-SUNSHINE



Sunshine Confetti Cotton



C665-PEONY



Peony Dainty Daisy



C675-WHITE



White Floret

Precious Petites 107/108" Wide Backs



Pink Precious Petites Wide Back



Mint Precious Petites Wide Back

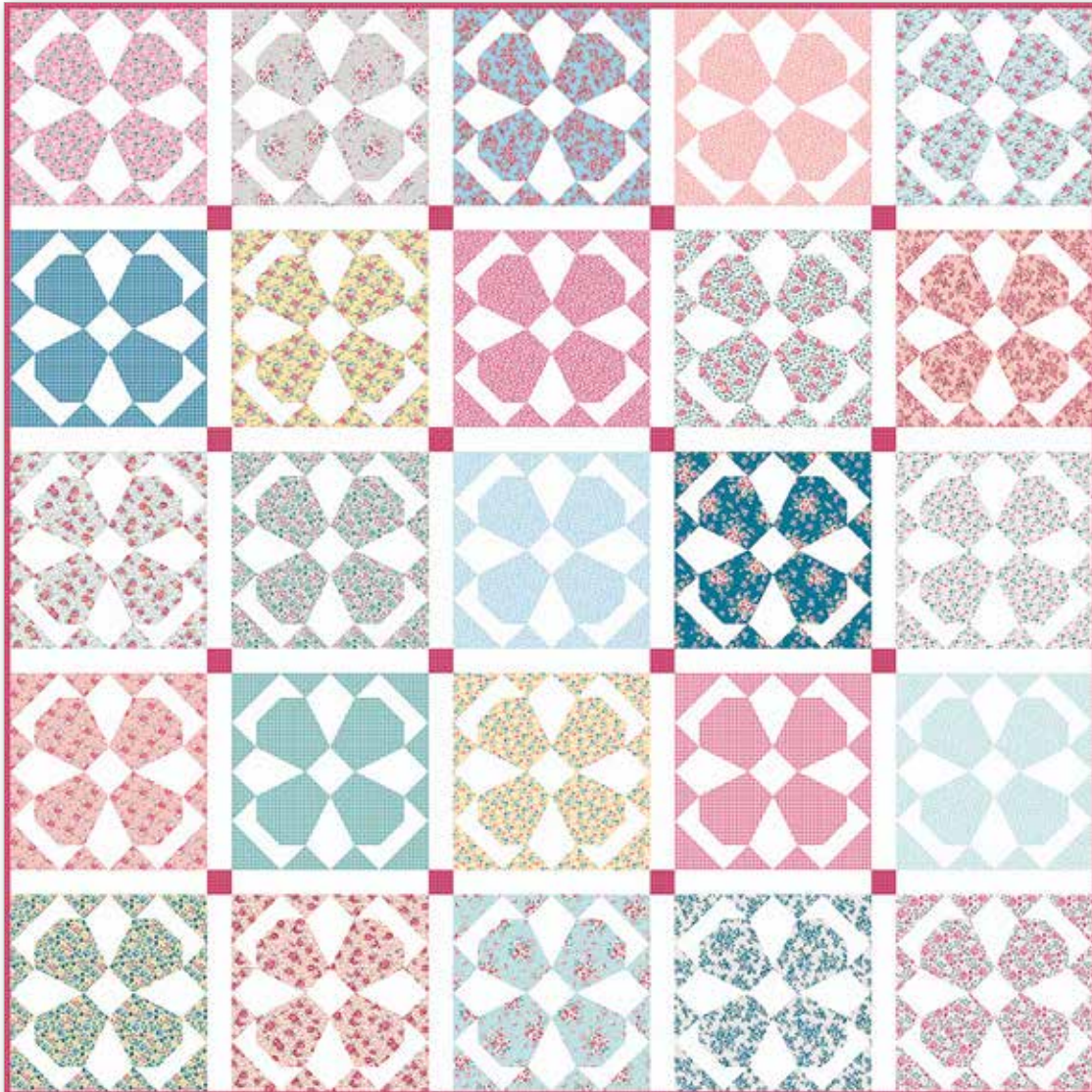


Blue Precious Petites Wide Back

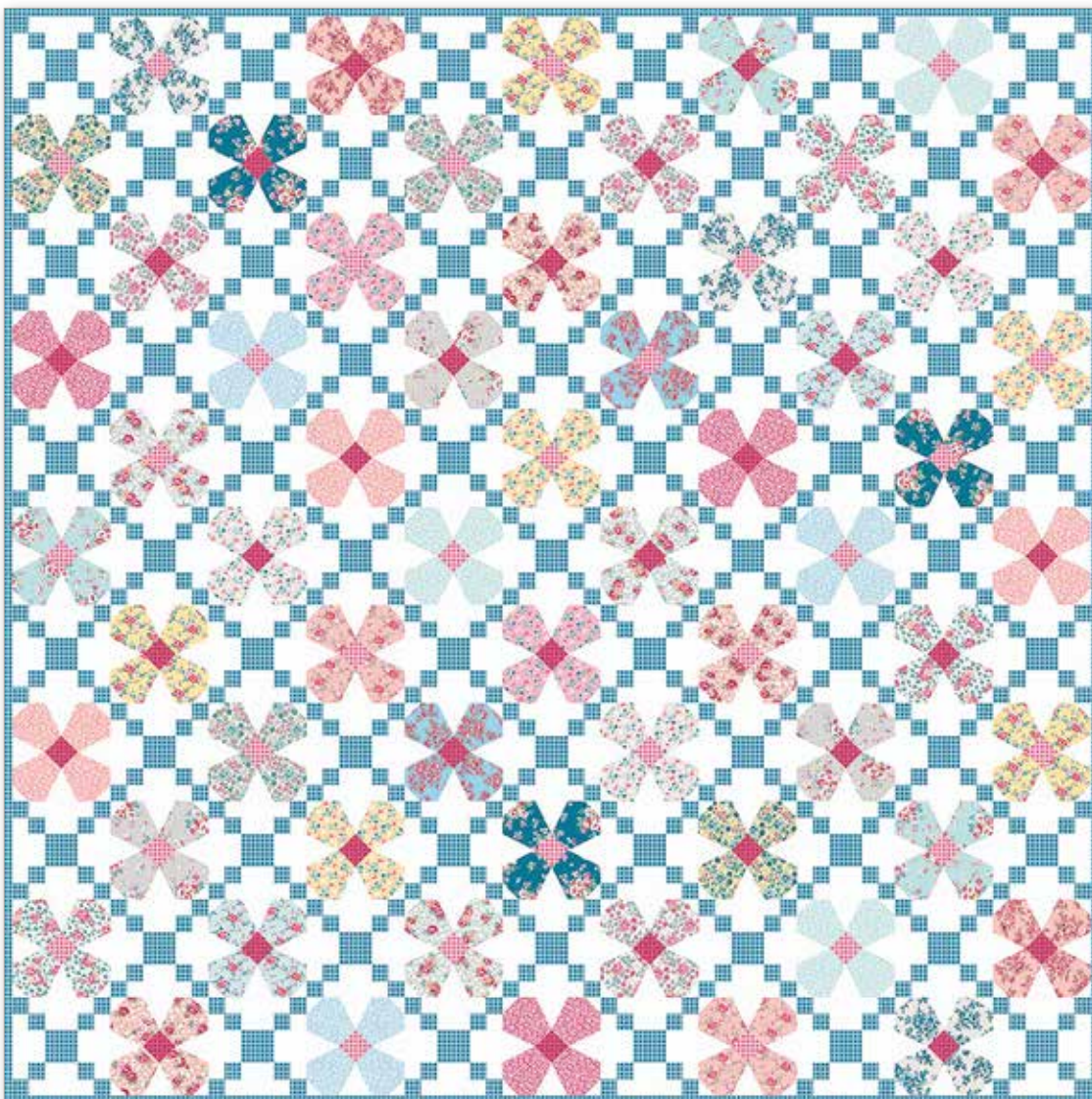
Blue Bells and Petite Blue Bells by Gerri Robinson

TWO designs in ONE pattern!

Blue Bells will be supported with video tutorials on Planted Seed Designs YouTube Channel. Gerri will show you how to construct the blocks and other tips for making the quilt.



Quilt Size 88" x 88"



Quilt Size 66" x 66"

estimated requirements

BLUE BELLS I

1/3 Yard of Each

- | | |
|-----------------------|------------------------|
| C15830-ASH Main | C15834-ASH Garden |
| C15830-BLUE Main | C15834-WHITE Garden |
| C15830-MINT Main | C15834-YELLOW Garden |
| C15831-AQUA Blossoms | C15835-ASH Flowers |
| C15831-ASH Blossoms | C15835-PINK Flowers |
| C15831-CORAL Blossoms | C15835-YELLOW Flowers |
| C15832-ASH Roses | C15836-AQUA Daisies |
| C15832-CORAL Roses | C15836-CORAL Daisies |
| C15832-MIST Roses | C15836-MAGENTA Daisies |
| C15833-CORAL Bouquet | C15836-SKY Daisies |
| C15833-MIST Bouquet | C15837-BLUE Gingham |
| C15833-YELLOW Bouquet | C15837-PINK Gingham |
| | C15837-VIVID Gingham |

Additional Fabrics

- 5 1/4 Yards C675-WHITE Floret (Background)
- 7/8 Yard C15837-MAGENTA Gingham (Includes Binding)
- 2 1/2 Yards WB15838-PINK Wide Back (Backing)

BLUE BELLS II

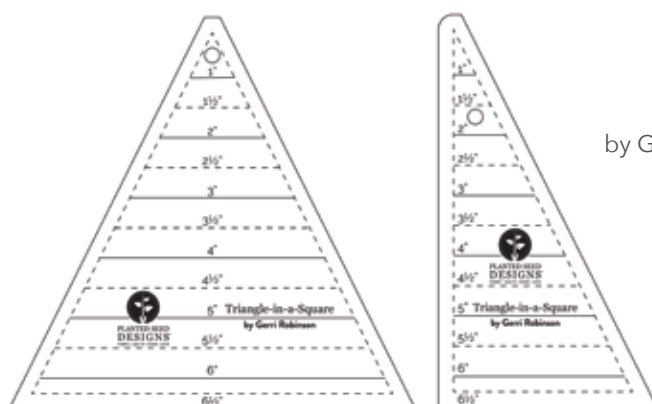
1/6 Yard of Each

- | | |
|-----------------------|------------------------|
| C15830-ASH Main | C15833-YELLOW Bouquet |
| C15830-BLUE Main | C15834-ASH Garden |
| C15830-MINT Main | C15834-YELLOW Garden |
| C15831-AQUA Blossoms | C15834-WHITE Garden |
| C15831-ASH Blossoms | C15835-ASH Flowers |
| C15831-CORAL Blossoms | C15835-PINK Flowers |
| C15832-ASH Roses | C15835-YELLOW Flowers |
| C15832-CORAL Roses | C15836-AQUA Daisies |
| C15832-MIST Roses | C15836-CORAL Daisies |
| C15833-CORAL Bouquet | C15836-MAGENTA Daisies |
| C15833-MIST Bouquet | C15836-SKY Daisies |

Additional Fabrics

- 2 1/2 Yards C675-WHITE Floret (Background)
- 1 3/4 Yards C15837-BLUE Gingham (Includes Binding)
- 2 1/8 Yards WB15838-BLUE Wide Back (Backing)

Pre-order the P124-BLUEBELLS Quilt Pattern



Triangle-in-a-Square Tool
by Gerri Robinson of Planted Seed Designs
Needed for ALL patterns

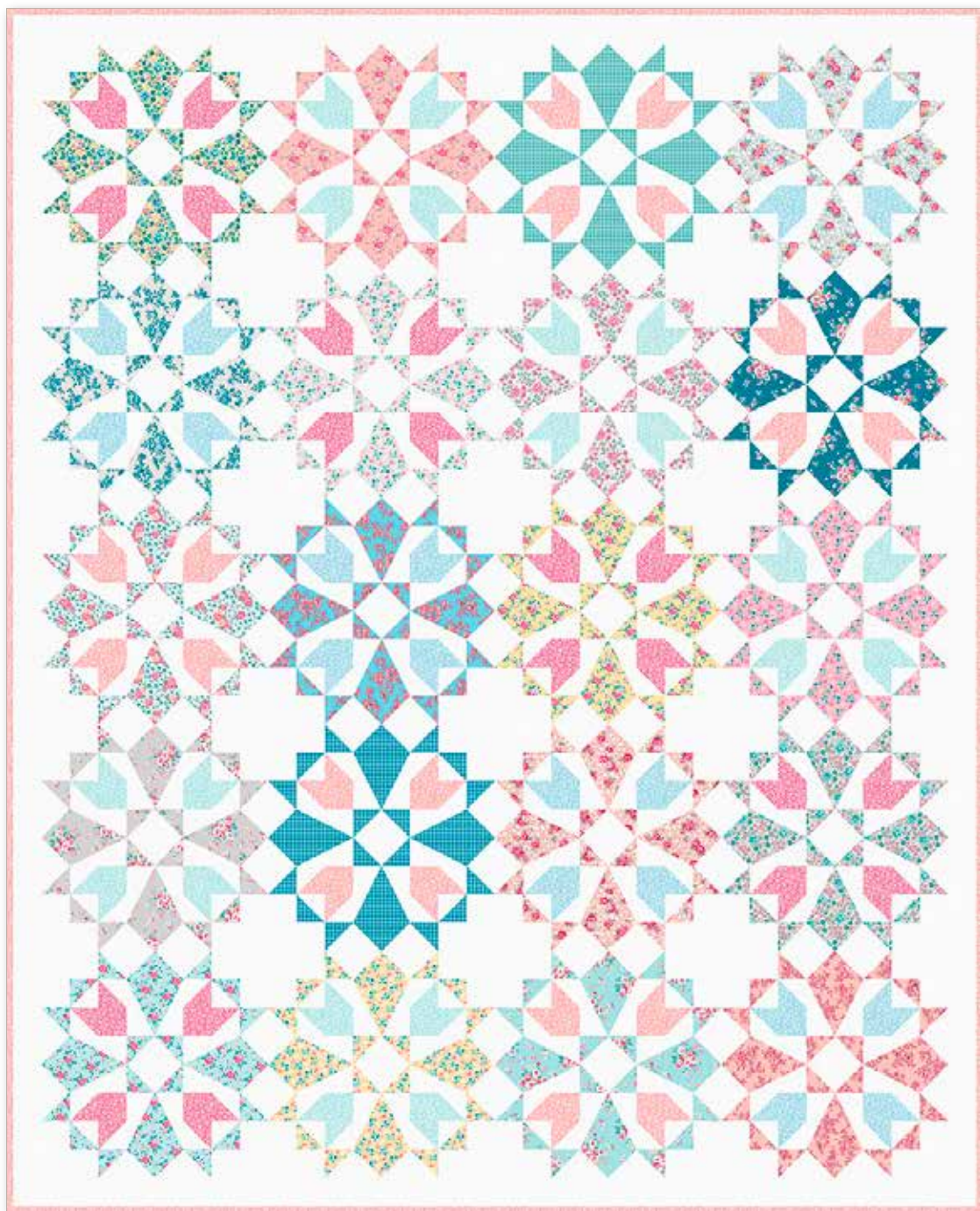
ST-12089



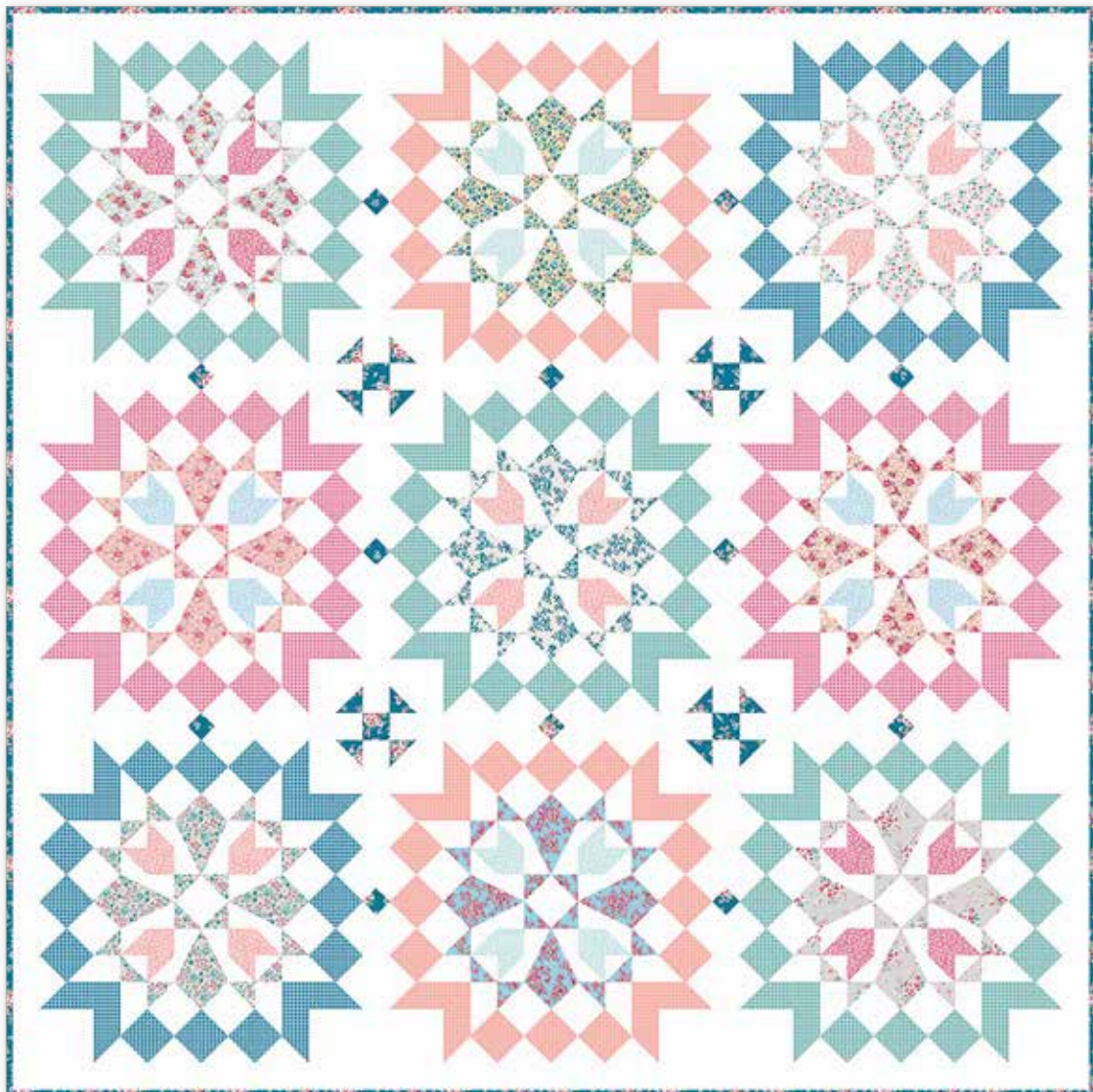
Blooming Tulips Design I & II by Gerri Robinson

TWO designs in ONE pattern!

Blooming Tulips will be supported with video tutorials on Planted Seed Designs YouTube Channel. Gerri will show you how to construct the blocks and other tips for making the quilt.



Quilt Size 64" x 80"



Quilt Size 80" x 80"

estimated requirements

BLOOMING TULIPS I

1/4 Yard of Each

- | | |
|-----------------------|-----------------------|
| C15830-ASH Main | C15833-MIST Bouquet |
| C15830-BLUE Main | C15833-YELLOW Bouquet |
| C15830-MINT Main | C15834-ASH Garden |
| C15831-AQUA Blossoms | C15834-WHITE Garden |
| C15831-ASH Blossoms | C15834-YELLOW Garden |
| C15831-CORAL Blossoms | C15835-ASH Flowers |
| C15832-ASH Roses | C15835-PINK Flowers |
| C15832-CORAL Roses | C15835-YELLOW Flowers |
| C15832-MIST Roses | C15837-BLUE Gingham |
| C15833-CORAL Bouquet | C15837-VIVID Gingham |

1/3 Yard of Each

- C15836-AQUA Daisies
- C15836-MAGENTA Daisies
- C15836-SKY Daisies

Additional Fabrics

- 5 3/4 Yards C675-WHITE Floret (Background)
- 1 Yard C15836-CORAL Daisies (Includes Binding)
- 2 Yards WB15838-MINT Wide Back (Backing)

BLOOMING TULIPS II

1/4 Yard of Each

- | | |
|----------------------|----------------------|
| C15830-ASH Main | C15837-BLUE Gingham |
| C15831-AQUA Blossoms | C15837-CORAL Gingham |
| C15831-ASH Blossoms | C15837-PINK Gingham |
| C15832-ASH Roses | C15837-VIVID Gingham |
| C15832-CORAL Roses | |
| C15833-CORAL Bouquet | |
| C15834-WHITE Garden | |
| C15834-YELLOW Garden | |
| C15835-ASH Flowers | |

Additional Fabrics

- 5 3/4 Yards C675-WHITE Floret (Background)
- 3/4 Yard C15830-BLUE Main (Includes Binding)
- 2 1/2 Yards WB15838-PINK Wide Back (Backing)

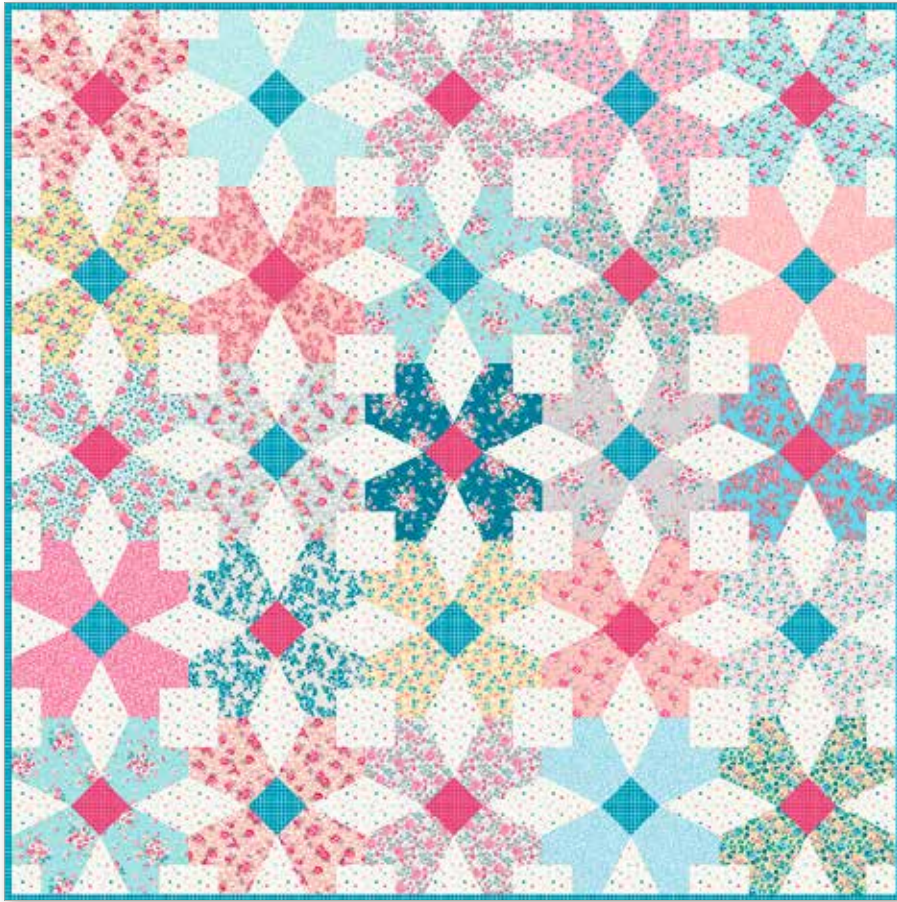
Pre-order the
P124-BLOOMINGTULIPS
Quilt Pattern



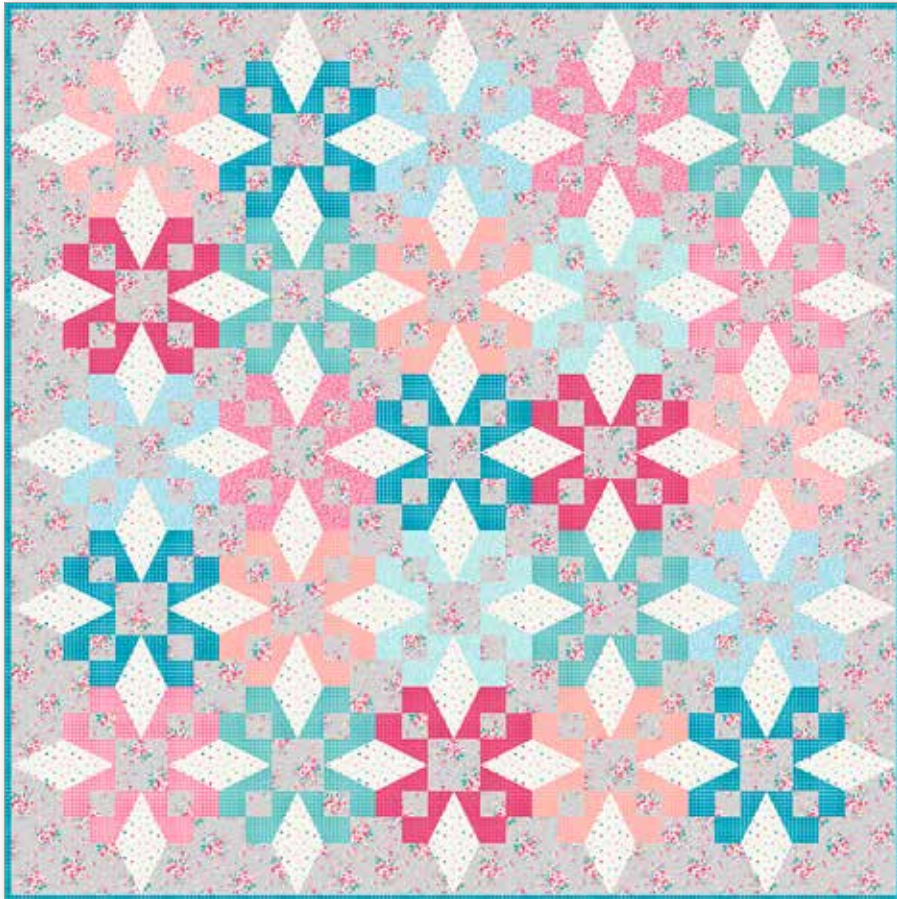
Ring Around the Posies by Gerri Robinson

THREE designs in ONE pattern!

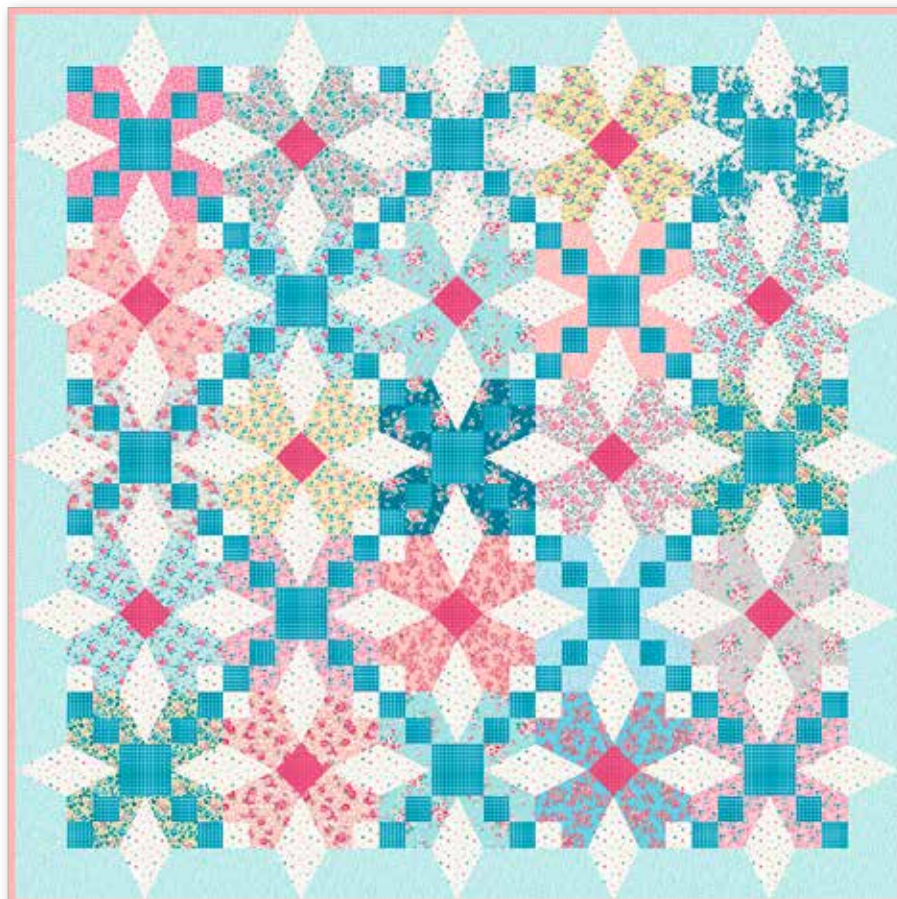
Ring Around the Posies will be supported with video tutorials on Planted Seed Designs YouTube Channel. Gerri will show you how to construct the blocks and other tips for making the quilt.



Quilt Size 60" x 60"



Quilt Size 68" x 68"



Quilt Size 68" x 68"

estimated requirements

RING AROUND THE POSIES I

1/4 Yard of Each

C15830-ASH Main	C15833-YELLOW Bouquet
C15830-BLUE Main	C15834-ASH Garden
C15830-MINT Main	C15834-WHITE Garden
C15831-AQUA Blossoms	C15834-YELLOW Garden
C15831-ASH Blossoms	C15835-ASH Flowers
C15831-CORAL Blossoms	C15835-PINK Flowers
C15832-ASH Roses	C15835-YELLOW Flowers
C15832-CORAL Roses	C15836-AQUA Daisies
C15832-MIST Roses	C15836-CORAL Daisies
C15833-CORAL Bouquet	C15836-MAGENTA Daisies
C15833-MIST Bouquet	C15836-SKY Daisies

Additional Fabrics

- 1/3 Yard C15837-MAGENTA Gingham
- 2 1/4 Yards C15837-CONFETTI Gingham (Background)
- 7/8 Yard C15837-BLUE Gingham (Includes Binding)
- 2 Yards WB15838-PINK Wide Back (Backing)

RING AROUND THE POSIES II

1/3 Yard Each

C15836-AQUA Daisies	C15837-CORAL Gingham
C15836-CORAL Daisies	C15837-MAGENTA Gingham
C15836-MAGENTA Daisies	C15837-PINK Gingham
C15836-SKY Daisies	C15837-VIVID Gingham

Additional Fabrics

- 2 Yards C15837-CONFETTI Gingham
- 2 1/4 Yards C15830-ASH Main (Background)
- 7/8 Yard C15837-BLUE Gingham (Includes Binding)
- 2 1/4 Yards WB15838-MINT Wide Back (Backing)

RING AROUND THE POSIES III

1/4 Yard of Each

C15830-ASH Main	C15834-WHITE Garden
C15830-BLUE Main	C15834-YELLOW Garden
C15830-MINT Main	C15835-ASH Flowers
C15831-AQUA Blossoms	C15835-PINK Flowers
C15831-CORAL Blossoms	C15835-YELLOW Flowers
C15832-ASH Roses	C15836-CORAL Daisies
C15832-CORAL Roses	C15836-MAGENTA Daisies
C15832-MIST Roses	C15836-SKY Daisies
C15833-CORAL Bouquet	C15837-MAGENTA Gingham
C15833-MIST Bouquet	3/4 Yard of Each
C15833-YELLOW Bouquet	C15836-AQUA Daisies
C15834-ASH Garden	C15837-CONFETTI Gingham

Additional Fabrics

- 2 1/4 Yards C15837-BLUE Gingham (Background)
- 1/2 Yard C15837-CORAL Gingham (Includes Binding)
- 2 1/4 Yards WB15838-BLUE Wide Back (Backing)

Pre-order the
P124-RINGAROUND
Quilt Pattern





C15830 Blue Main

Shown as Repeat 44" x 36"



About the Line



You've all heard the phrase, "timing is everything", right? That phrase could not be more true than the lead up to releasing *Precious Petites* now. I originally submitted *Precious Petites* in 2019 but it was rejected because it just wasn't its time. I tried again over the next 4 years with the hopes of hearing, "yes, now it's time". Well, the time has come and can I say, it's the perfect time to introduce you to *Precious Petites*!

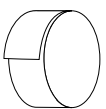
Precious Petites was inspired by the announcement of the pregnancy of our first granddaughter, Elle, in 2018. We knew she was a girl but we had not met her yet, she was still spending time in mommy's belly. Prior to Elle's birth, I envisioned *Precious Petites* as little girl dresses and jackets and her entire bedroom decorated with quilts, pillows and window toppers.

Fast forward to November 2023 when Elle was visiting us. I had all the printouts of the *Precious Petites* fabric swatches and digital quilts on my desk, when Elle picked up Blue Bells and said "Gigi, will you make this one just for me?" My heart melted! And you already know what my response was - yes!! I could not have been more thrilled than in that very moment. I smiled for multiple reasons . . . timing IS everything and it's now time to share all the fun and exciting things we have planned for *Precious Petites*.

- Gerri

Gerri Robinson
@plantedseeddesigns

precuts



RP-15830-40



8 89333 39685 7

Rolie Polie
40 Pieces

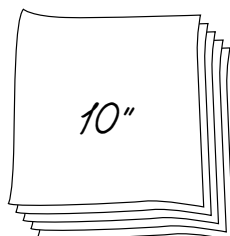


5-15830-42



8 89333 39686 4

5-Inch Stacker
42 Pieces

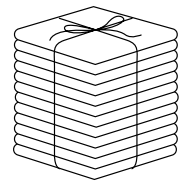


10-15830-42



8 89333 39687 1

10-Inch Stacker
42 Pieces



FQ-15830-28



8 89333 39688 8

Fat Quarter Bundle
28 Pieces

pre-order only

ADD ANY LAMINATE WITH 100 YARDS MINIMUM
WIDE BACKS ARE NOT INCLUDED IN CASE PACKS



1YD-15830A-9



8 89333 39689 5

Ash - 1-Yard Bundle
9 Pieces



1YD-15830B-9



8 89333 39690 1

Blue - 1-Yard Bundle
9 Pieces



1YD-15830M-10



8 89333 39691 8

Mint - 1-Yard Bundle
10 Pieces

CP10-15830-28



8 89333 39693 2

10-Yard Case Pack

CP15-15830-28



8 89333 39694 9

15-Yard Case Pack

available January 2025 **last call August 1, 2024**

100% FINE COTTON · 43/44" WIDE · MADE IN KOREA



9646 South 500 West
Sandy, UT 84070
888.768.8454 · 801.816.0540
www.rileyblakedesigns.com

©2024 Riley Blake Designs & Gerri Robinson

Machine Wash Cold
No Chlorine Bleach
Tumble Dry Low
Remove Promptly
Not Intended for Children's Sleepwear

The projects portrayed are virtual images. The look of the projects may differ with actual fabric.

The project virtual(s) shown may be different than the image shown on the pattern cover.

Approximate fabric requirements are listed to aid in estimating the amount of yardage to order and are subject to change.

Backing yardage is shown using the best use of fabric and may not be intended for directional fabric.