

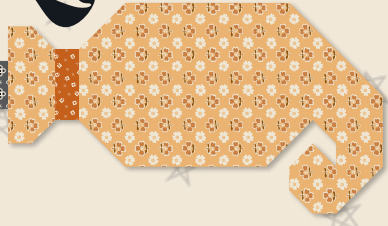
Riley Blake  
DESIGNS®



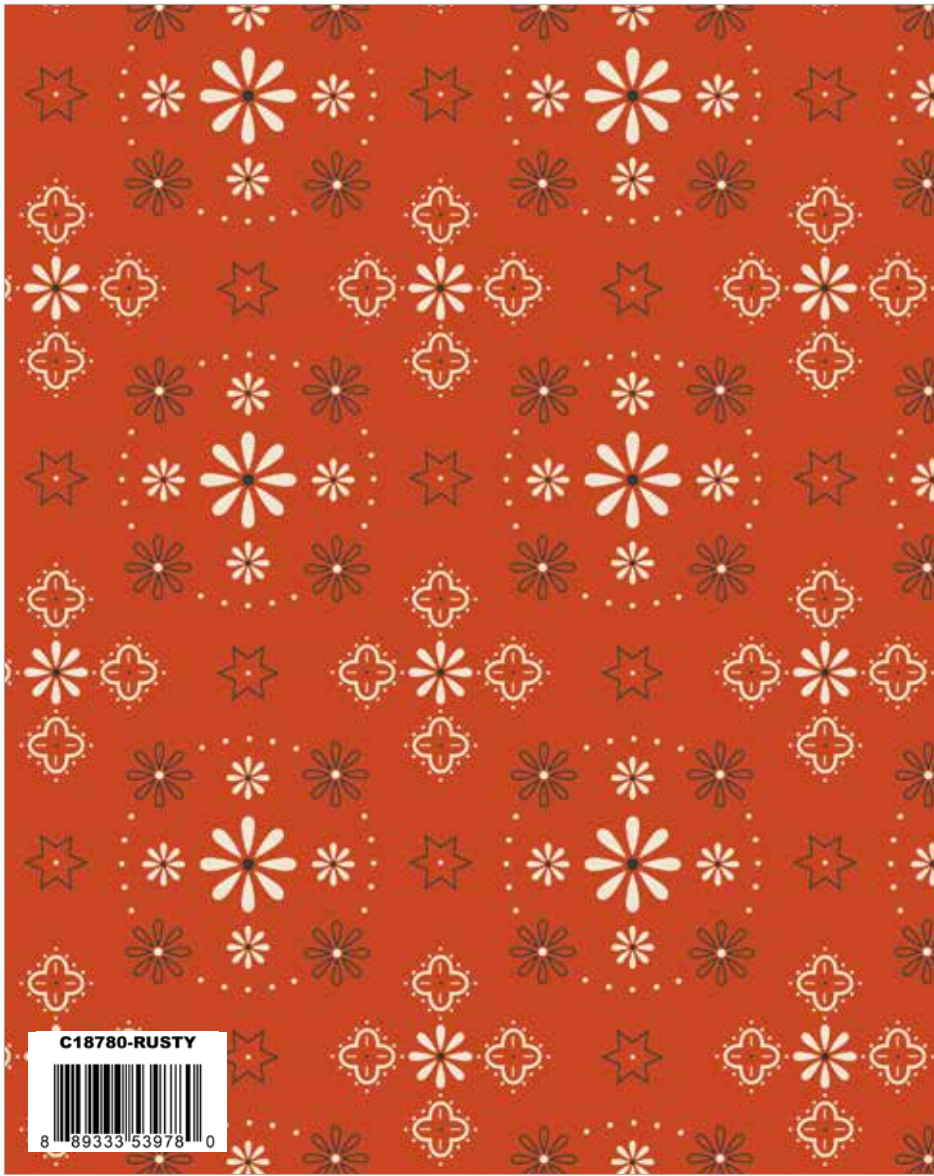
Lori Holt in COLOR No. 3

# Pumpkin & Licorice

by Lori Holt of Bee in my Bonnet

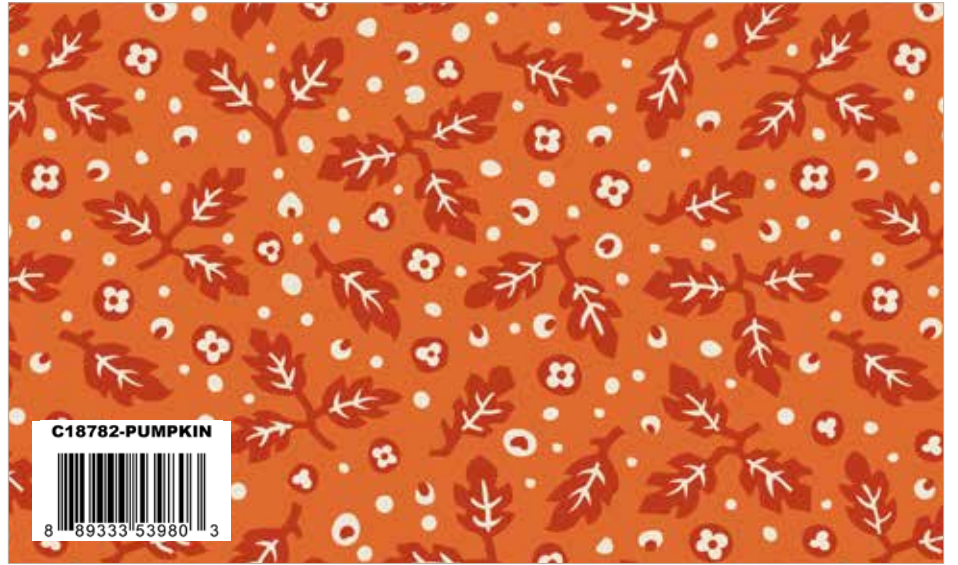


available March 2027 | R-3  
last call September 1, 2026



Rusty Handkerchief

Pumpkin Wallpaper



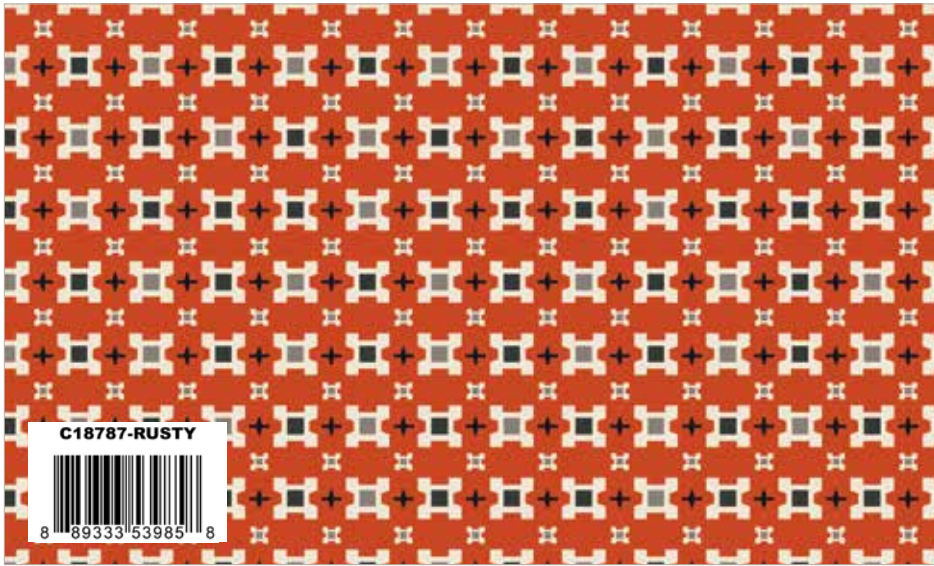
Pumpkin Plaid

Pumpkin Leaves



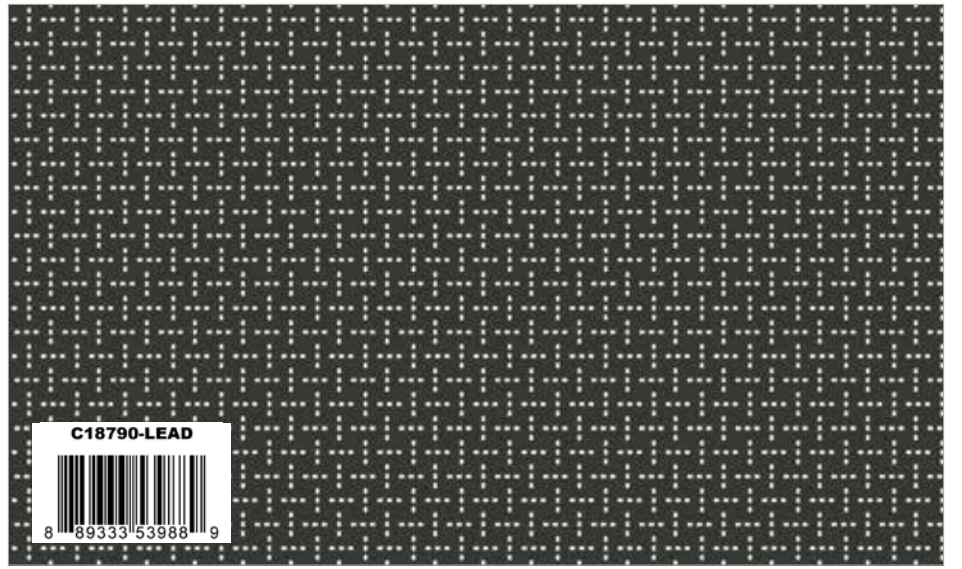
Rusty Tiny Daisy

Pumpkin Ditsy



Rusty Calico

Amber Star Flowers



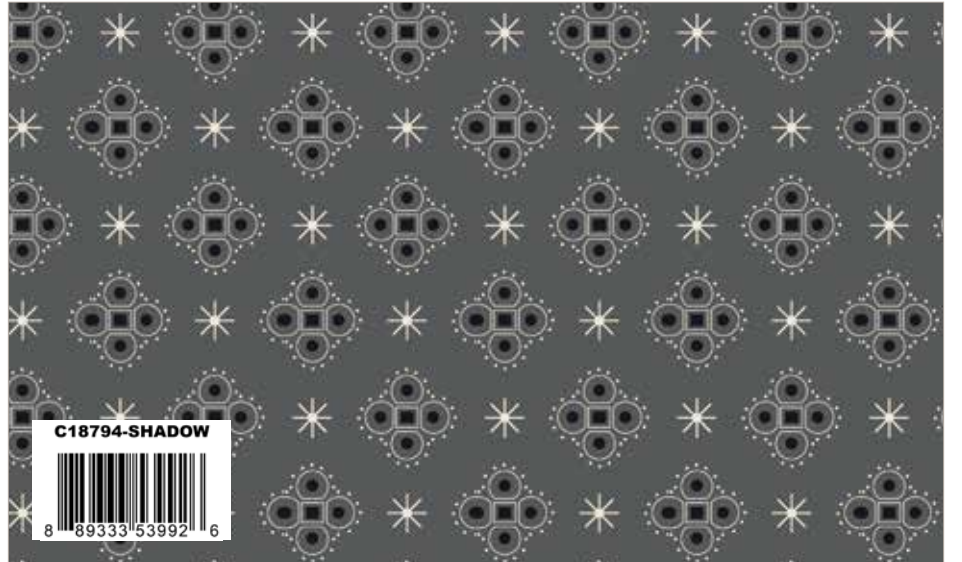
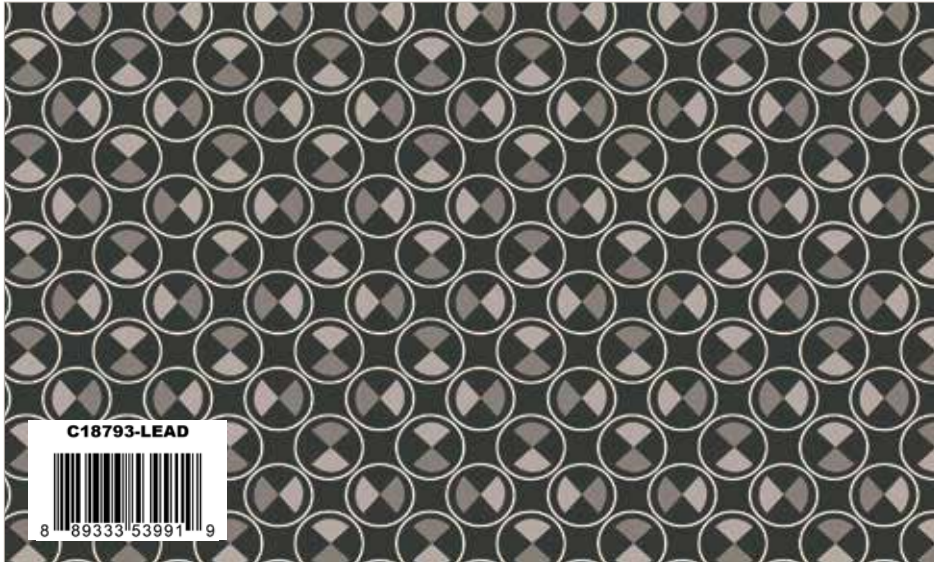
Licorice Petals

Lead Stitches



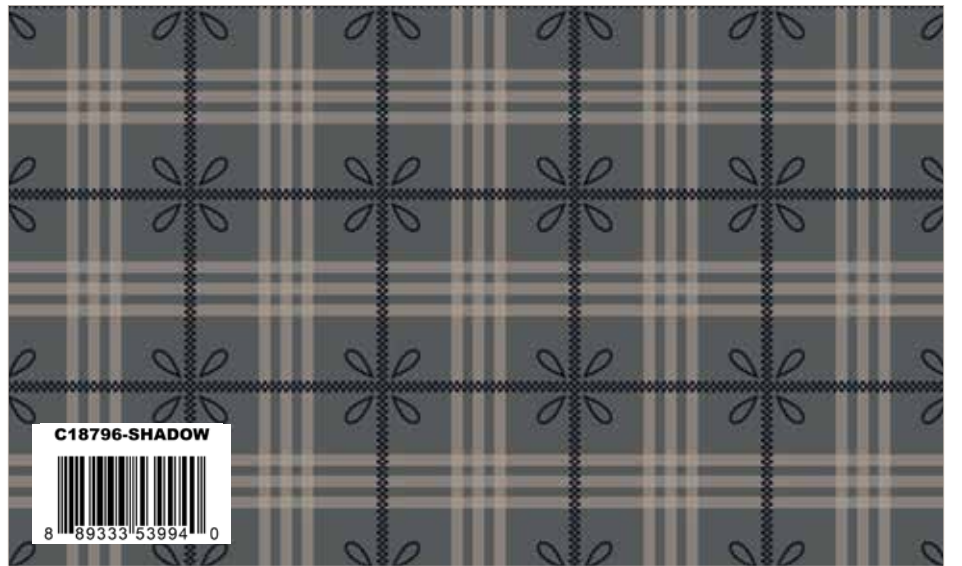
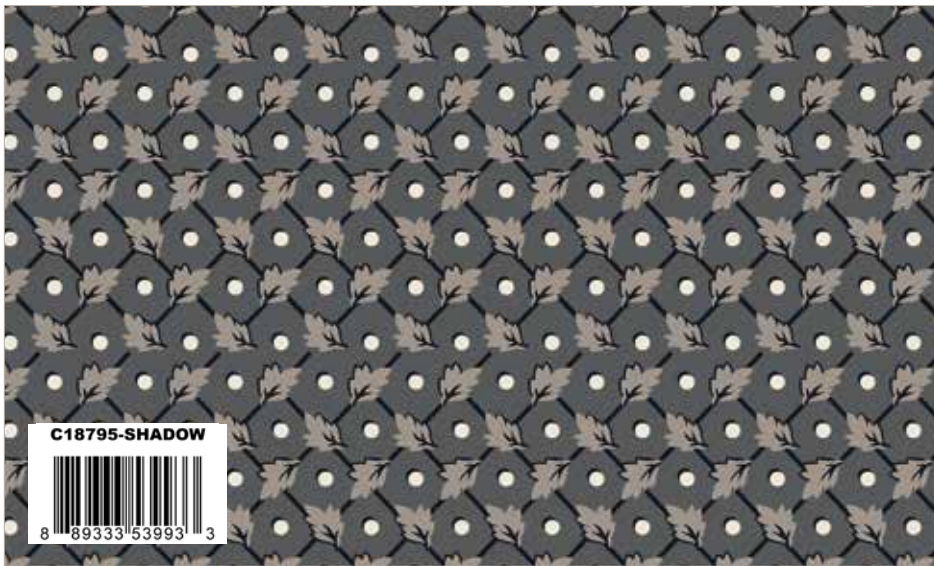
Deep Rustic Gingham

Lead Wildflowers



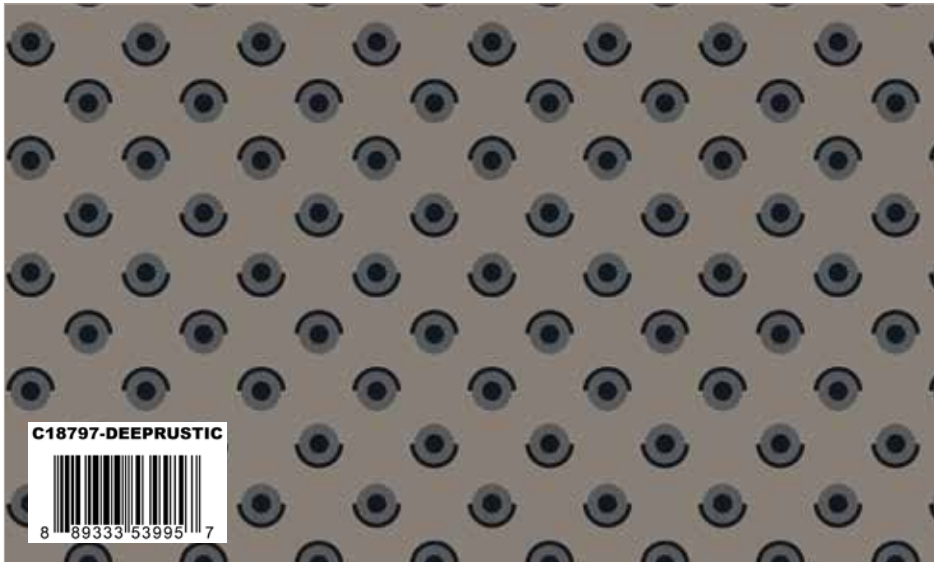
Lead Boxes

Shadow Starshine



Shadow Leaves Grid

Shadow Cozy Plaid



Deep Rustic Polka Dots

Rustic Denim (58/60" Wide Denim)

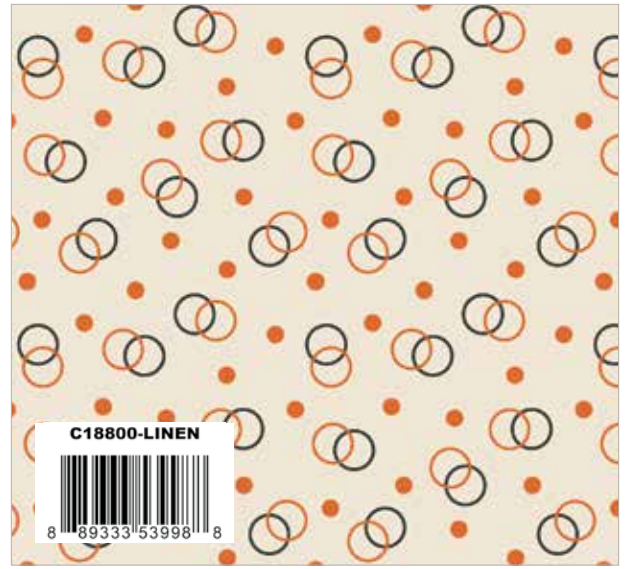
**58/60" 100% Cotton Lightweight Denim Fabric**



Linen Farmhouse Star



Linen Shirtings



Linen Ring Toss

**Pumpkin & Licorice 107/108" Wide Backs**



Lead Handkerchief Wide Back

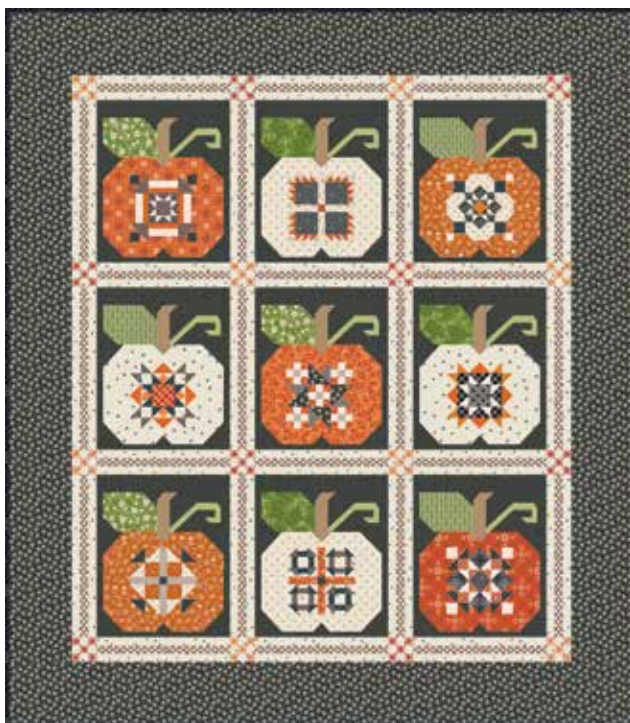
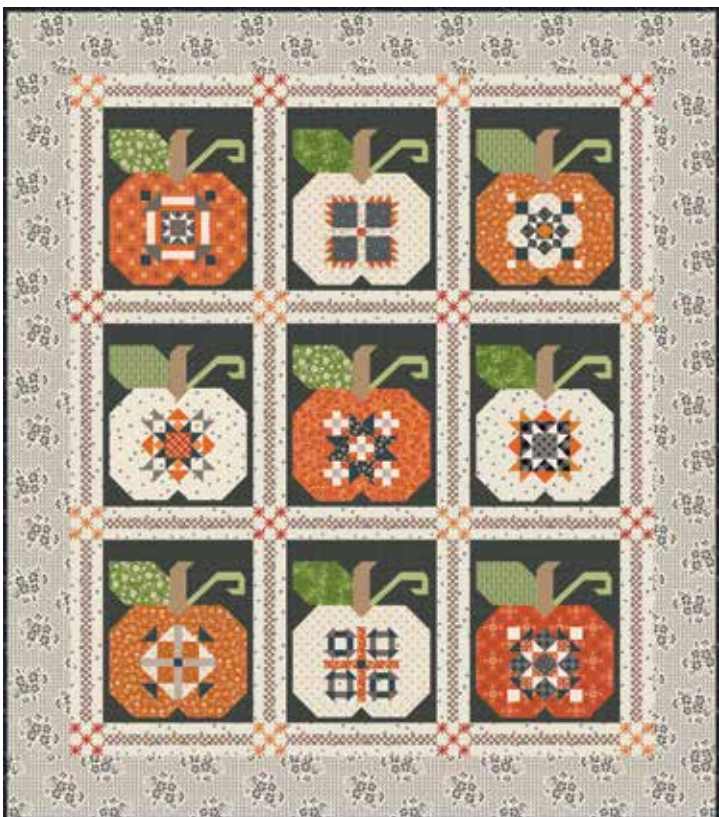


Linen Wallpaper Wide Back



Linen Petals Wide Back

**Autumn Quilt Seeds™ Machine Embroidery**



Available April 2027



## Patchwork Witch Hat Home Dec DIY Panels

Introducing 3 New Panels for DIY Witch Hats by Lori Holt of Bee in my Bonnet for your Halloween Haunting!

- Adult Size
- Free instructions will be at [www.rileyblakedesigns.com](http://www.rileyblakedesigns.com)
- Panel includes fabric for the hat, hat lining, hat band & brim binding
- Simply add batting, Vintage Trim or use Lori's NEW Sweet Scallop Scissors for a decorative raw edge!



Sweet Scallop Scissors  
ST-54681



Licorice  
STVT-54039



Rusty  
STVT-54041



Linen  
STVT-50249



**Hexie**  
Patchwork  
Witch Hat  
Panel

HD18805-PANEL



Hexie Patchwork Witch Hat Panel  
(5 panels per bolt)  
Scaled to 10% | Actual Size is 48" x 54"



**Licorice**  
Patchwork  
Witch Hat  
Panel

HD18806-PANEL



Licorice Patchwork Witch Hat Panel  
(5 panels per bolt)  
Scaled to 10% | Actual Size is 48" x 54"



**Star**  
Patchwork  
Witch Hat  
Panel

HD18807-PANEL



Star Patchwork Witch Hat Panel (5 panels per bolt)  
Scaled to 10% | Actual Size is 48" x 54"

**Midnight Snack Table Topper by Lori Holt of Bee in my Bonnet**

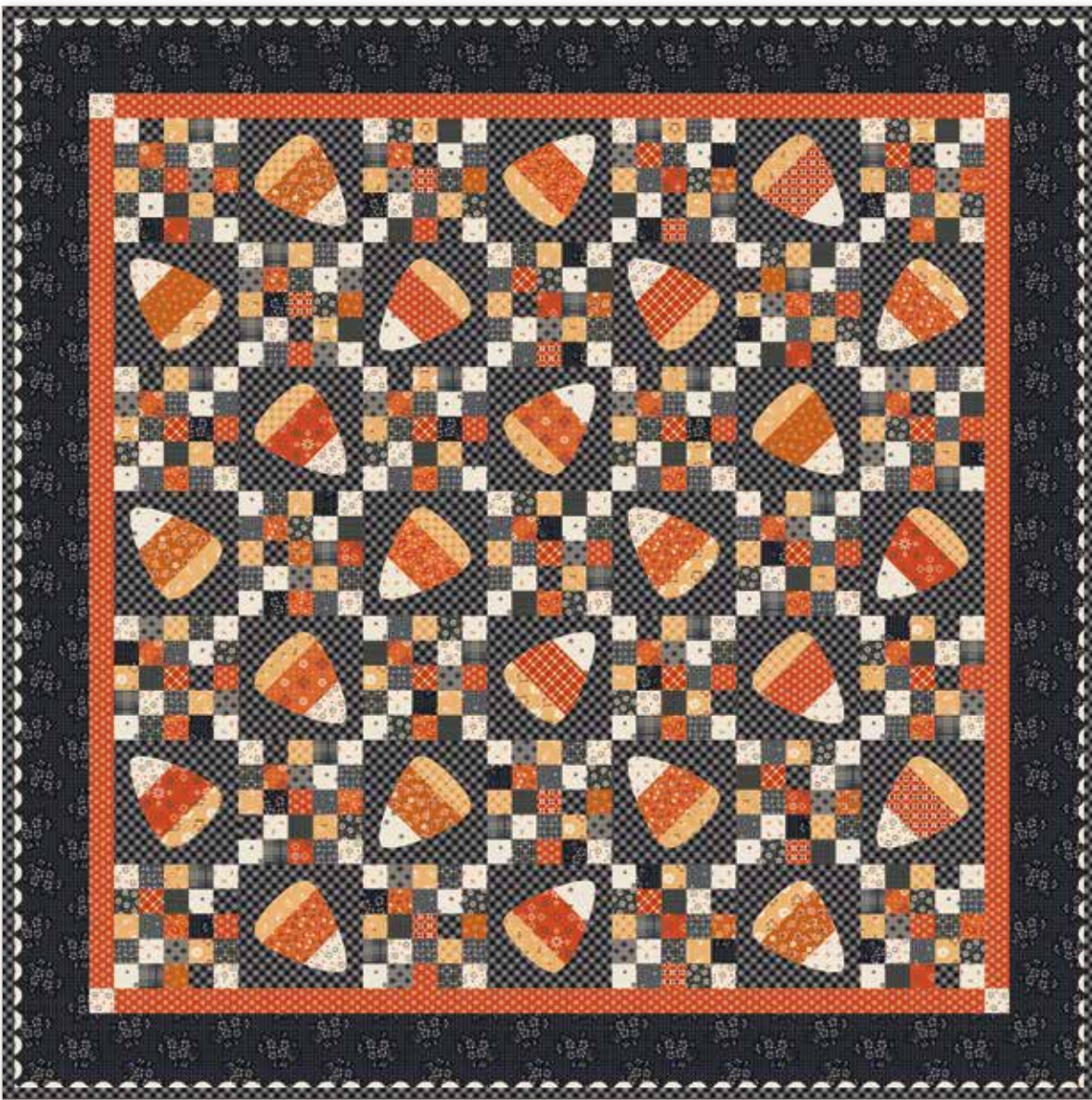


Table Topper 43½" x 43½"



Collector Box Size: 10" x 7¾" x 3¼"

Includes exclusive pattern, Candy Corn template and fabric for Table Topper and binding.

**Notions/Supplies** (not included in the kit)  
STTI-5527 5½" Trim-it Ruler  
STVT-50249 Linen Large Vintage Trim

**Suggested Backing**  
1 ¾ Yards WB18803-LINEN Wallpaper

AVAILABLE APRIL 2027  
Limited Quantities Available



Pre-order the Midnight Snack Table Topper Kit



**Midnight Ride by Lori Holt of Bee in my Bonnet**



Quilt Size 91½" x 91½"



Collector Box Size: 11" x 12" x 5½"

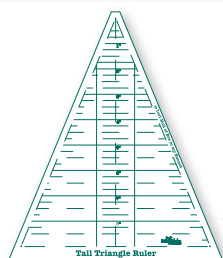
Includes exclusive pattern, and fabric for quilt top and binding.

**Notions/Supplies** (not included in the kit)  
ST-25442 Tall Triangle Ruler  
STTI-54038 13½" Trim-it™ Ruler  
STVT-54041 Rusty Large Vintage Trim

**Suggested Backing:**  
3 Yards WB18804-LINEN Petals

AVAILABLE APRIL 2027  
Limited Quantities Available

Pre-order the Midnight Ride Quilt Kit



Tall Triangle Ruler



ST-25442



13½" Trim-it™ Ruler



STTI-54038

**Midnight Boo! Sew Along** by **Lori Holt** of **Bee in my Bonnet**



Quilt Size 81½" x 90½"

estimated **requirements**

**Fat 1/4 of Each**

- C18780-RUSTY Handkerchief
- C18781-PUMPKIN Wallpaper
- C18782-PUMPKIN Leaves
- C18783-PUMPKIN Plaid
- C18784-PUMPKIN Ditsy
- C18785-RUSTY Tiny Daisy
- C18786-AMBER Star Flowers
- C18787-RUSTY Calico
- C18788-AMBER Mercantile

**5/8 Yard of Each**

- C18798-LINEN Farmhouse Star
- C18799-LINEN Shirtings

**7/8 Yard of Each**

- C18791-DEEPRUSTIC Gingham
- C18792-LEAD Wildflowers
- C18794-SHADOW Starshine
- C18795-SHADOW Leaves Grid
- C18796-SHADOW Cozy Plaid

**1 Yard of Each**

- C18790-LEAD Stitches
- C18793-LEAD Boxes
- C18797-DEEPRUSTIC Polka Dots

**Additional Fabrics**

- 3/4 Yard C18800-LINEN Ring Toss
- 1 3/8 Yards C18789-LICORICE Petals  
(Includes Binding)

**Suggested Backing**

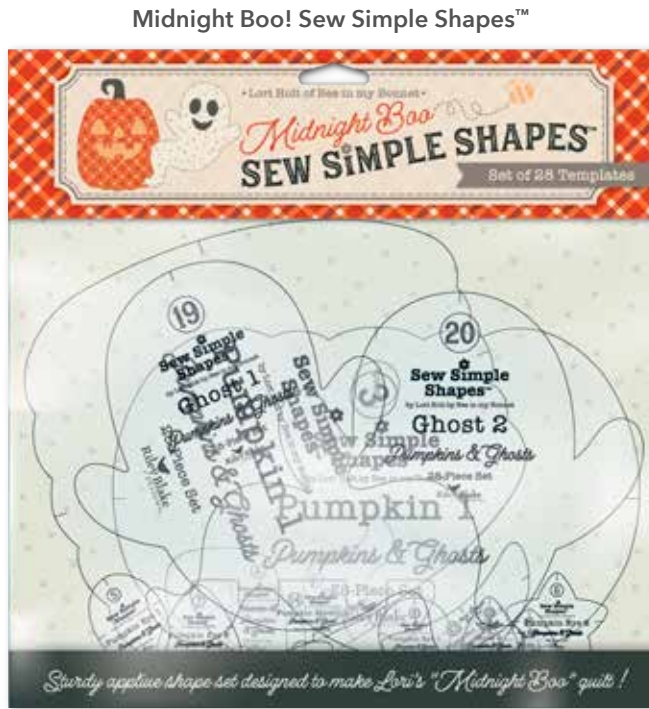
- 2 1/2 Yards WB18802-LEAD Handkerchief

**Products & Notions Needed/Suggested on Next Page**



The Sew Along Guide will be available  
April 26, 2027 on [www.rileyblakedesigns.com](http://www.rileyblakedesigns.com)

## Midnight Boo! Sew Along Products and Notions



- 28 Sew Simple Shapes™
- Constructed of sturdy plastic
- Features center marks
- Transparent for fussy cutting
- Works great with Lori's Sew-In Interfacing Pack and Precuts
- MOQ: sold in packs of 6

STT-54037



8 89333 54037 3

### Products & Notions Needed/Suggested

- STT-54037 Midnight Boo! Sew Simple Shapes™
- Cute Cuts Trim-It™ Rulers: STTI-5525 (3½") & STTI-5530 (9½")
- (1) Package STVT-54039 Licorice Large Vintage Trim
- (1) Package ST-34006 Precut 14" Squares Sew-In Interfacing
- ST-50232 Sew Simple Shaper™
- RBTH-54032 Pumpkin & Licorice Thread Pack
- ST-8517 Nifty Needles™
- ST-8644 Appliqué Pretty Pins™
- ST-34011 Lori Holt Sweet Sewing 9" Scissors
- ST-46808 Lori Holt Honey Bee 5" Scissors
- ST-37388 Riley Red Flower Power Magnetic Pin Holder
- ST-36046 Busy Bee Mechanical Pencils
- ST-54034 Pumpkin & Licorice Washi Tape
- N093-GLUE Sue Daley Glue
- Pumpkin & Licorice Design Boards
- Bee in my Bonnet Cutting Mats
- Seams Sew Easy™ Seam Guide
- RTY-2C-RED Quick-Change Rotary Cutter by Olfa x Lori Holt
- ST-11311 12" Tailor's Clapper & ST-11312 7" Quilter's Clapper
- ST-40888 Quilter's Water Brush

Sweet Sewing 9" Scissors



ST-34011



8 89333 34011 9

Honey Bee 5" Scissors



ST-46808



8 89333 46808 0

Sew Simple Shaper™



ST-50232



8 89333 50232 6

Sew-In Interfacing



Precut Sew-In Interfacing  
14" x 14" Squares  
50 per pack

ST-34006



8 89333 34006 5

Pumpkin & Licorice Thread Pack



RBTH-54032



8 89333 54032 8

Pumpkin & Licorice Textured Washi Tape



ST-54034



8 89333 54034 2

Sue Daley Glue



N093-GLUE



7 01715 77563 3

Quilter's Water Brush



ST-40888



8 89333 40888 8

- Use for pressing open intersecting seams when making patchwork blocks
- 4 brushes per pack
- Soft plastic
- MOQ: Sold in packs of 5

Appliqué Pretty Pins



ST-39772



8 89333 39772 4

Nifty Needles™



ST-8517



8 89333 08517 1

Large Ric-Rac Vintage Trim  
NEW Licorice

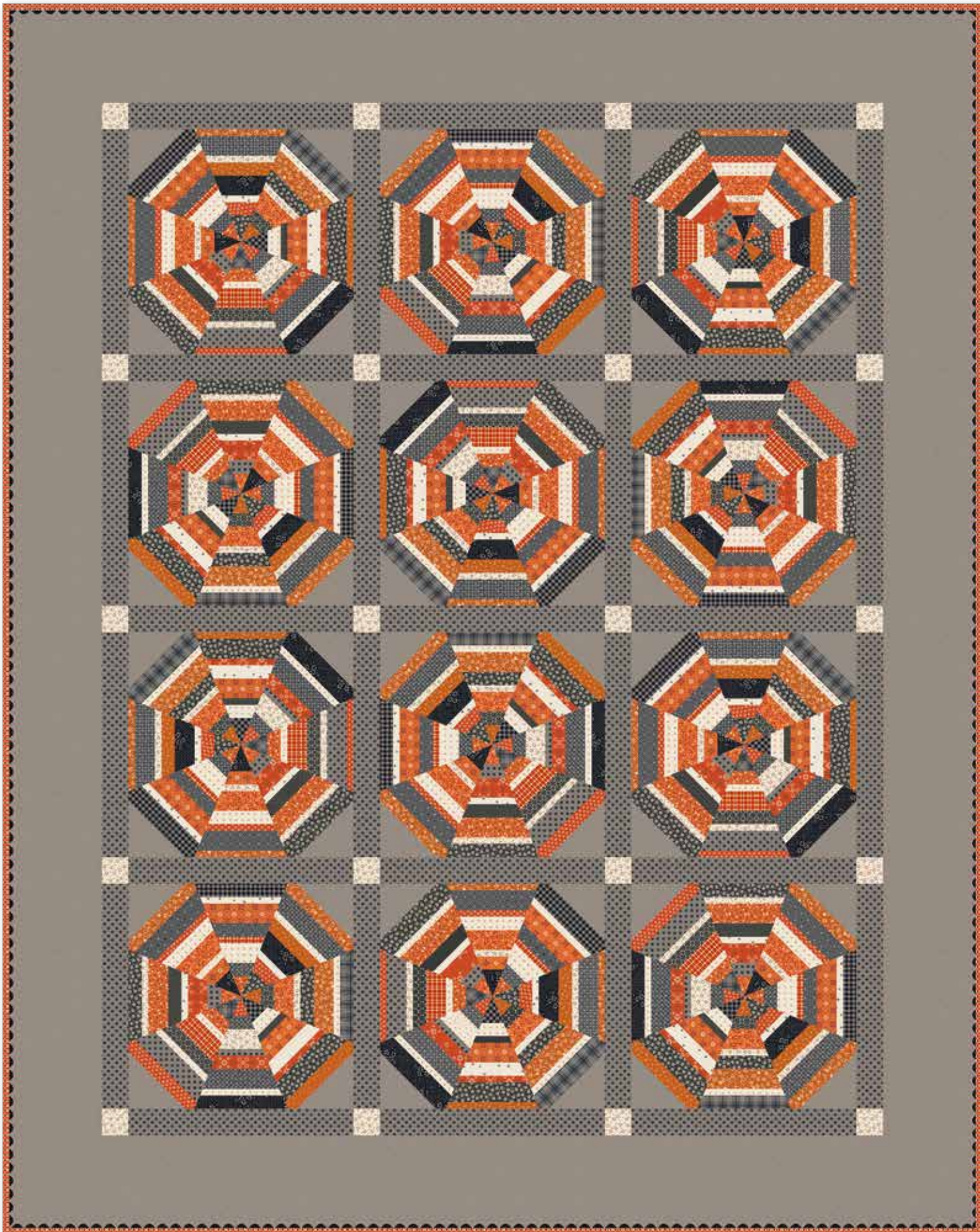


STVT-54039



8 89333 54039 7

**Scrappy Spider Web by Lori Holt of Bee in my Bonnet**



Quilt Size 73½" x 92½"

**estimated requirements**

**1/3 Yard of Each**

- C18783-PUMPKIN Plaid
- C18793-LEAD Boxers

**1/2 Yard of Each**

- C18780-RUSTY Handkerchief
- C18781-PUMPKIN Wallpaper
- C18784-PUMPKIN Ditsy
- C18786-AMBER Star Flowers
- C18788-AMBER Mercantile
- C18791-DEEPRUSTIC Gingham
- C18796-SHADOW Cozy Plaid
- C18798-LINEN Farmhouse Star

**5/8 Yard of Each**

- C18782-PUMPKIN Leaves
- C18785-RUSTY Tiny Daisy
- C18789-LICORICE Petals

**3/4 Yard of Each**

- C18792-LEAD Wildflowers
- C18799-LINEN Shirtings

**Additional Fabrics**

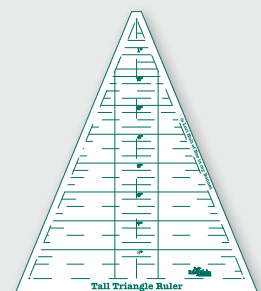
- 1/4 Yard C18790-LEAD Stitches
- 3/8 Yard C18794-SHADOW Starshine
- 2/3 Yard C18795-SHADOW Leaves Grid
- 7/8 Yard C18800-LINEN Ring Toss
- 1 5/8 Yards C18797-DEEPRUSTIC Polka Dots
- 2 Yards DN18801-RUSTIC Denim (Background)
- 3/4 Yard C18787-RUSTY Calico (Binding)
- 2 3/8 Yards WB18803-LINEN Wallpaper (Backing)

**Notions Needed/Suggested**

- STVT-54039 Licorice Large Vintage Trim
- ST-25442 Tall Triangle Ruler
- STTI-48393 17½" Trim-it™ Ruler

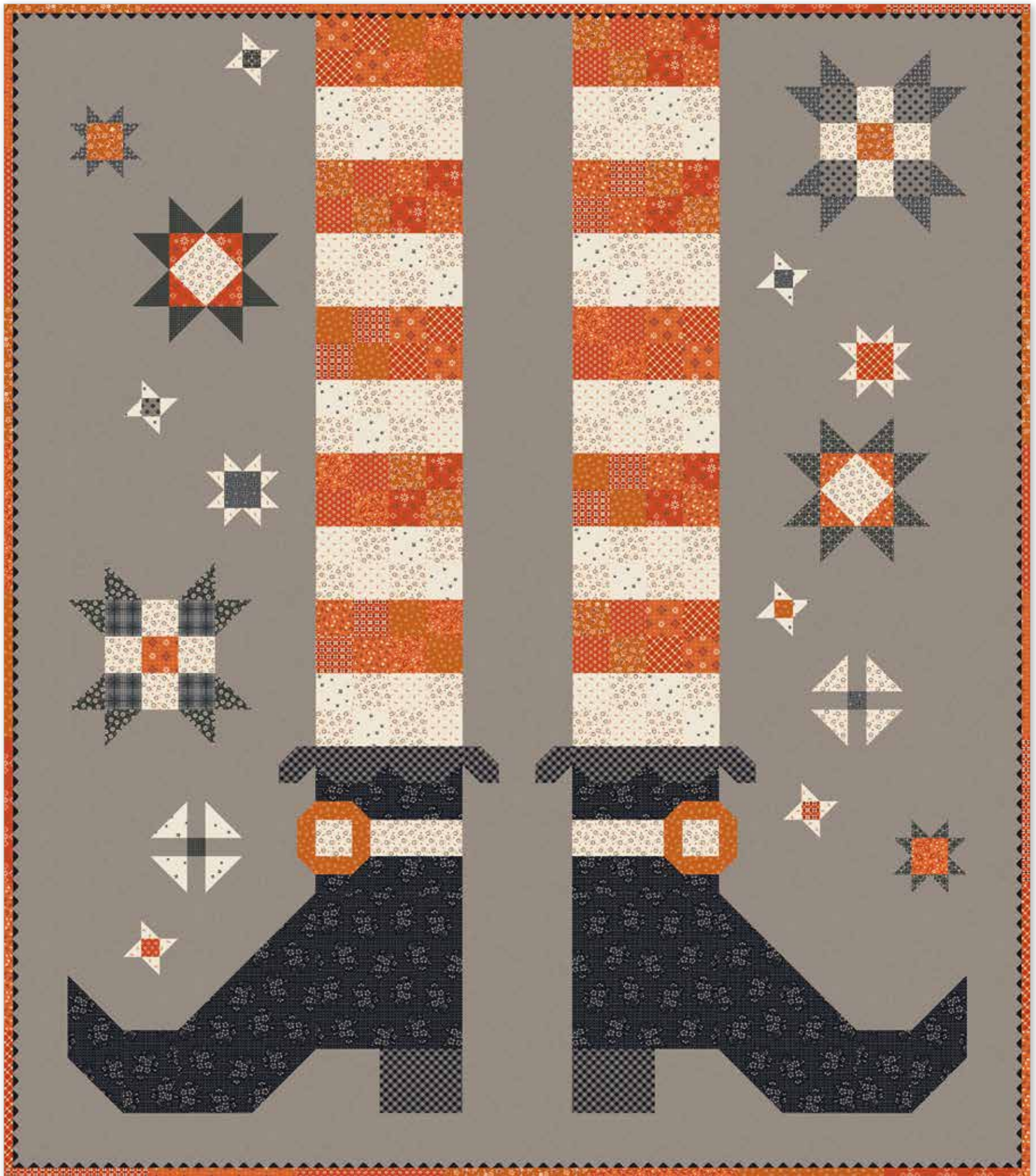


Pre-order the P120-SPIDERWEB Quilt Pattern



Tall Triangle Ruler





Quilt Size 55½" x 63½"

**estimated requirements**

**Fat 1/8 of Each**

- C18790-LEAD Stitches
- C18792-LEAD Wildflowers
- C18794-SHADOW Starshine
- C18796-SHADOW Cozy Plaid
- C18797-DEEPRUSTIC Polka Dots

**Fat 1/4 of Each**

- C18780-RUSTY Handkerchief
- C18781-PUMPKIN Wallpaper
- C18782-PUMPKIN Leaves
- C18783-PUMPKIN Plaid
- C18784-PUMPKIN Ditsy
- C18785-RUSTY Tiny Daisy
- C18786-AMBER Star Flowers
- C18787-RUSTY Calico

**Fat 1/4 of Each (Continued)**

- C18788-AMBER Mercantile
- C18791-DEEPRUSTIC Gingham
- C18793-LEAD Boxers
- C18795-SHADOW Leaves Grid
- C18798-LINEN Farmhouse Star
- C18799-LINEN Shirtings

**Additional Fabrics**

- 5/8 Yard C18800-LINEN Ring Toss
- 3/4 Yard C18789-LICORICE Petals
- 2 3/4 Yards DN18801-RUSTIC Denim (Background)
- 1 7/8 Yards WB18802-LEAD Handkerchief (Backing)

**Notions Needed/Suggested**

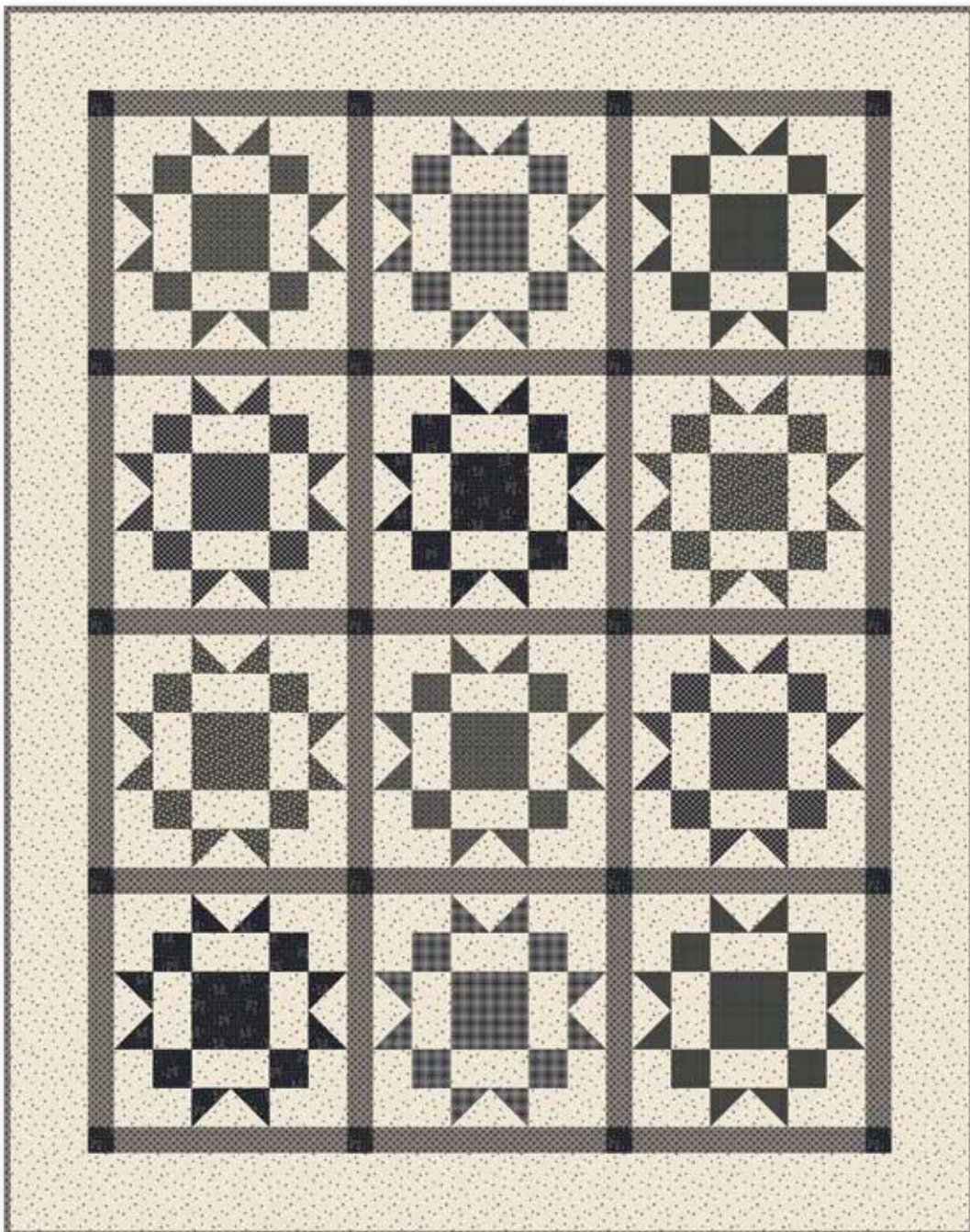
- 7 1/8 Yards STVT-54039 Licorice Large Vintage Trim



Pre-order the  
P051-ISE-341  
Quilt Pattern



**Home Again by Lori Holt – Published by It's Sew Emma**



Quilt Size 74½" x 94½"

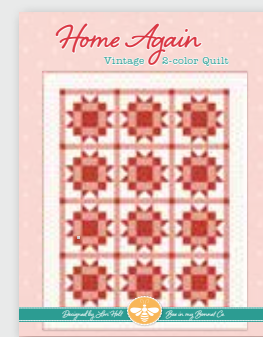
**estimated requirements**

**1/2 Yard of Each**

- C18790-LEAD Stitches
- C18791-DEEPRUSTIC Gingham
- C18792-LEAD Wildflowers
- C18793-LEAD Boxes
- C18796-SHADOW Cozy Plaid

**Additional Fabrics**

- 5/8 Yard C18789-LICORICE Petals
- 4 3/4 Yards C18798-LINEN Farmhouse Star (Background)
- 2 Yards C18797-DEEPRUSTIC Polka Dots (Includes Binding)
- 2 3/8 Yards WB18804-LINEN Petals (Backing)



Pre-order the  
P051-ISE-268  
Quilt Pattern



**Trick-or-Treat Runner by Lori Holt – Published by It's Sew Emma**



Runner Size 36½" x 78½"

**estimated requirements**

**Fat 1/8 of Each**

- C18789-LICORICE Petals
- C18790-LEAD Stitches
- C18791-DEEPRUSTIC Gingham
- C18792-LEAD Wildflowers
- C18793-LEAD Boxes
- C18794-SHADOW Starshind
- C18795-SHADOW Leaves Grid
- C18796-SHADOW Cozy Plaid
- C18797-DEEPRUSTIC Polka Dots

**7/8 Yard of Each**

- C18780-RUSTY Handkerchief
- C18781-PUMPKIN Wallpaper
- C18782-PUMPKIN Leaves
- C18783-PUMPKIN Plaid
- C18784-PUMPKIN Ditsy
- C18785-RUSTY Tiny Daisy
- C18786-AMBER Star Flowers
- C18787-RUSTY Calico
- C18788-AMBER Mercantile

**1 1/3 Yards of Each**

- C18798-LINEN Farmhouse Star
- C18799-LINEN Shirtings
- C18800-LINEN Ring Toss

**Additional Fabrics**

- 5/8 Yard C18791-DEEPRUSTIC Gingham (Binding)
- 5 Yards C18787-RUSTY Calico (Backing)

**Notions Needed/Suggested**

- 6 7/8 Yards STVT-54039 Licorice Large Vintage Trim
- 1 Pad P051-ISE-7017 12" Vintage Milkmaid's Star Quilt Foundation Paper

**FREE PATTERN  
AVAILABLE MARCH 2027**  
[www.fatquartershop.com](http://www.fatquartershop.com)





Quilt Size 54½" x 68"

**estimated requirements**

**Fat 1/4 of Each**

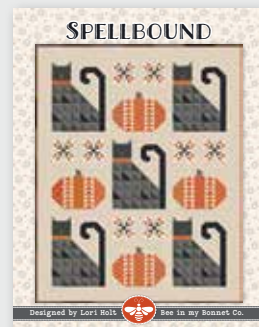
- C18780-RUSTY Handkerchief
- C18781-PUMPKIN Wallpaper
- C18782-PUMPKIN Leaves
- C18783-PUMPKIN Plaid
- C18784-PUMPKIN Ditsy
- C18785-RUSTY Tiny Daisy
- C18786-AMBER Star Flowers
- C18787-RUSTY Calico
- C18788-AMBER Mercantile
- C18791-DEEPRUSTIC Gingham
- C18793-LEAD Boxers
- C18794-SHADOW Starshine
- C18795-SHADOW Leaves Grid
- C18796-SHADOW Cozy Plaid

**1/2 Yard of Each**

- C18790-LEAD Stitches
  - C18792-LEAD Wildflowers
  - C18798-LINEN Farmhouse Star
  - C18799-LINEN Shirtings
- Additional Fabrics**
- 3/4 Yard C18789-LICORICE Petals
  - 7/8 Yard C18797-DEEPRUSTIC Polka Dots
  - 3 Yards C1880-LINEN Ring Toss (Background)
  - 1 7/8 Yards WB18803-LINEN Wallpaper (Backing)

**Notions Needed/Suggested**

- 7 1/4 Yards STVT-54041 Rusty Large Vintage Trim



Pre-order the  
P051-ISE-342  
Quilt Pattern



**Pumpkin & Licorice Notions by Lori Holt of Bee in my Bonnet**

**Sweet Scallop Scissors**

- Use to trim Sew Simple Shapes
- Perfect for raw-edge appliqué
- 7mm scallop
- MOQ: 6



ST-54681



**Pumpkin & Licorice Thread Pack**

- 5 spools of Efina™ 60wt 100% Egyptian cotton
- Licorice, Milk Can, Linen, Pumpkin & Rusty
- Perfect for appliqué and piecing
- 164yd (150m) spools
- MOQ: 5 packs

RBTH-54032



NEW Rusty  
RBTH-49650



**Pumpkin & Licorice Design Boards**

- Audition fabric for blocks
- Organize blocks that are cut and ready to sew
- Stack easily for storing
- Available in 4 sizes
- MOQ: 5



**Treats Enamel Charm**

- Approx. 2" x 3"
- MOQ: 10

FG-54026



**Tricks Enamel Charm**

- Approx. 2" x 3½"
- MOQ: 10

FG-54027



**Haunted Cottage Enamel Scissor Minder**

- Approx. 3" x 2½"
- MOQ: 5

ST-54033



13½" Trim-it Ruler

STTI-54038



**Pumpkin & Licorice Textured Washi Tape**

- Pulls away cleanly with no residue
- Approx 10 yards per roll
- Includes 2 rolls 1" wide and 2 rolls ½" wide
- MOQ: 4



ST-54034



**Midnight Boo Sew Simple Shapes™**

- 28 Sew Simple Shapes™
- Constructed of sturdy plastic
- Features center marks
- Transparent for fussy cutting
- Works great with Lori's Sew-In Interfacing Pack and Precuts
- MOQ: 6

SST-54037



**Bee Keeper Binder**

- Approximately 12¼" x 11½" x 2¾"
- D-Rings for easy page turning
- MOQ: 4



ST-54035



**Halloween Puzzle Set**

- Set of 4 puzzles
- 20, 16, 24, and 28 pieces
- Finished size of each is 6" x 9"
- Simple puzzles for tiny hands
- MOQ: 6



FG-54031



**Straw Pals**

- Printed acrylic
- Approx. 3½" x 4"
- Packs of 2
- MOQ: 6 packs



Jack & Ghost  
FG-54029



Boot & Hat  
FG-54682



**Pumpkin & Licorice Stick-ems**

- Clear vinyl stickers
- Approx. 3" each
- Pack of 5 stickers
- MOQ: 10 packs

FG-54028



**Midnight Ride Trick-or-Treat Tote**

- H 12½" x L 14½" x W 5½"
- MOQ: 10

TB-54043



**Midnight Boo Trick-or-Treat Tote**

- H 12½" x L 14½" x W 5½"
- MOQ: 10

TB-54044



**Vinyl Project Bag**

- Approx. 9" x 12"
- MOQ: 5

ST-54036



**Tiered Pumpkin Bowl/Container**

- Use for fall entertaining as decor, a bowl for candy, nuts, chips & dips or as cute storage for sewing notions
- Approx. sizes  
Closed with lid: W 10" x H 6"  
Stacked: W 10" x H 7½"  
Dividers: W 8" x H 2¼" x D 4"
- Includes 3 removable clear dividers
- Flip and stack lid on top of base
- Food and dishwasher safe
- Sold in a colorful gift box
- MOQ: 4



FG-54030



## Coordinating Confetti Cotton Threads



Licorice

Milk Can

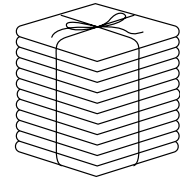
Pumpkin

Linen

## Advanced Sample Bundle

ONLY AVAILABLE THROUGH LOCAL RBD REPS

- Pre-order only
- One per customer
- Not available on website



ASY-FQ-18780-21



ASY Fat Quarter Bundle  
21 Pieces



### Lori Holt in Color

*Lori Holt in Color* by Lori Holt of Bee in my Bonnet is a fresh and inspiring series that invites makers to explore the beauty of color—two hues at a time. Each release in this twice-yearly series will highlight a perfectly paired duo, celebrating every shade and tone in Lori's signature style. The third collection in the series, *Pumpkin & Licorice* features exclusive fabrics, notions, and gift items in color combinations you're sure to love. Whether you're quilting, crafting, or collecting, *Lori Holt in Color* is a playful way to explore new color combinations to add even more creative possibilities to your sewing room. We can't wait for you to sew along!

### About the Line

*Pumpkin & Licorice* by Lori Holt of Bee in my Bonnet is a delightfully spooky collection that pairs warm pumpkin oranges with inky licorice blacks in a playful mix of prints that feel both classic and full of Halloween fun. From spooky-sweet florals to vintage geometrics, *Pumpkin & Licorice* captures the magic of midnight, when witches take to the skies, friendly ghosts drift by with a soft "boo," and little ones sneak just one more piece of candy corn. Whether you're stitching up festive quilts or adding a touch of Halloween to your sewing room, these rich shades of orange and black are sure to bring a little extra magic to every project.

Lori Holt  
@beelori1

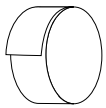


## Pumpkin & Licorice

Scan to stay up-to-date on all  
Lori Holt happenings & projects



## precuts



RP-18780-40



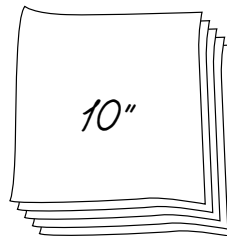
Rolie Polie  
40 Pieces  
(DN18801 not included)



5-18780-42



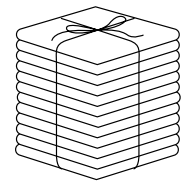
5-Inch Stacker  
42 Pieces  
(DN18801 not included)



10-18780-42



10-Inch Stacker  
42 Pieces  
(DN18801 not included)



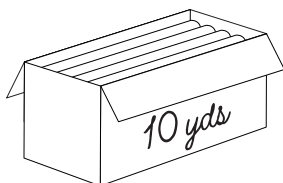
FQ-18780-21



Fat Quarter Bundle  
21 Pieces  
(DN18801 not included)

## pre-order only

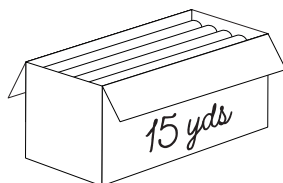
ADD ANY LAMINATE WITH 100 YARDS MINIMUM



CP10-18780-21



10-Yard Case Pack



CP15-18780-21



15-Yard Case Pack



1YD-18780-21



1-Yard Bundle  
21 Pieces

PANELS, DENIM, AND WIDE BACKS ARE NOT INCLUDED IN CASE PACKS

Pumpkin & Licorice - Lori Holt in Color No. 3  
available March 2027 **last call September 1, 2026**

100% FINE COTTON · 43/44" WIDE · MADE IN KOREA



4060 W 2100 N, STE A  
Lehi, UT 84048-7837  
888.768.8454 · 801.816.0540  
www.rileyblakedesigns.com

©2026 Riley Blake Designs & Lori Holt

Machine Wash Cold  
No Chlorine Bleach  
Tumble Dry Low  
Remove Promptly  
Not Intended for Children's Sleepwear

The projects portrayed are virtual images. The look of the projects may differ with actual fabric.

The project virtual(s) shown may be different than the image shown on the pattern cover.

Approximate fabric requirements are listed to aid in estimating the amount of yardage to order and are subject to change.

Backing yardage is shown using the best use of fabric and may not be intended for directional fabric.