



LAURA ASHLEY

SINCE 1953

Rosewater Cottage



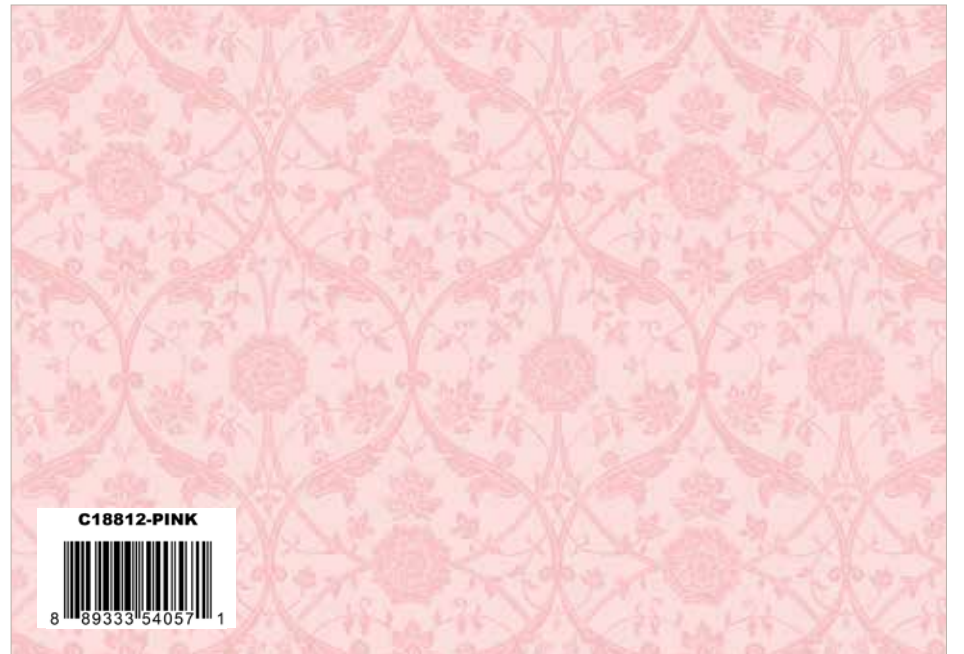
available January 2027 | R-3
last call July 1, 2026



Pink Toile Delight



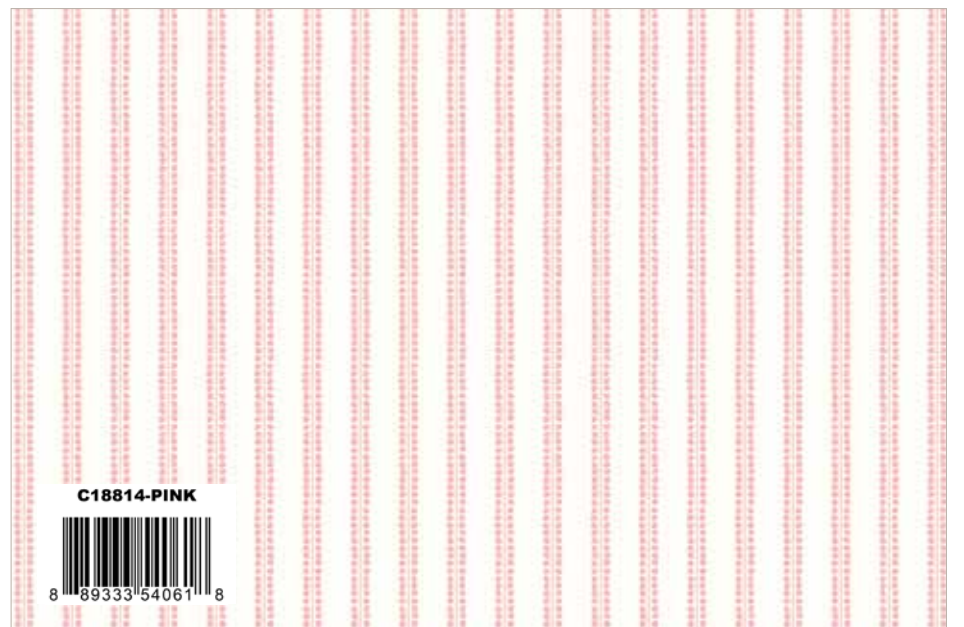
Pink China Rose



Pink Endale



Pink Hazelside Ditsy



Pink Candy Stripe



Pink Carleon



Pink Lunham



Pink Sweet Alyssum



Pink Pensham Bouquets



C18810-BLUE



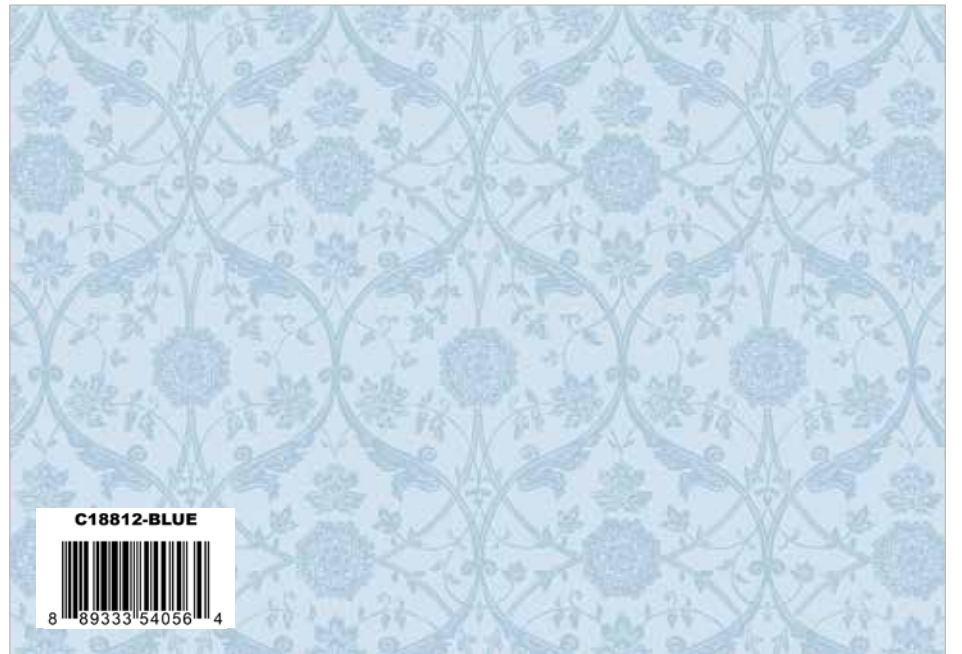
Blue Toile Delight



C18811-BLUE



Blue China Rose



C18812-BLUE



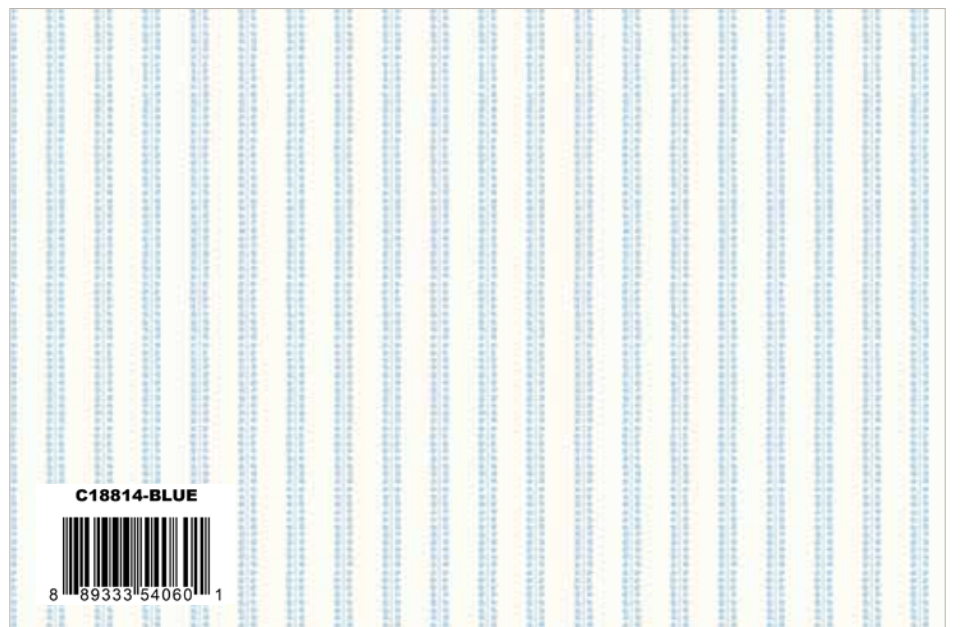
Blue Endale



C18813-BLUE



Blue Hazelside Ditsy



C18814-BLUE



Blue Candy Stripe



C18815-BLUE



Blue Carleon



C18816-BLUE



Blue Lunham



C18817-BLUE



Blue Sweet Alyssum

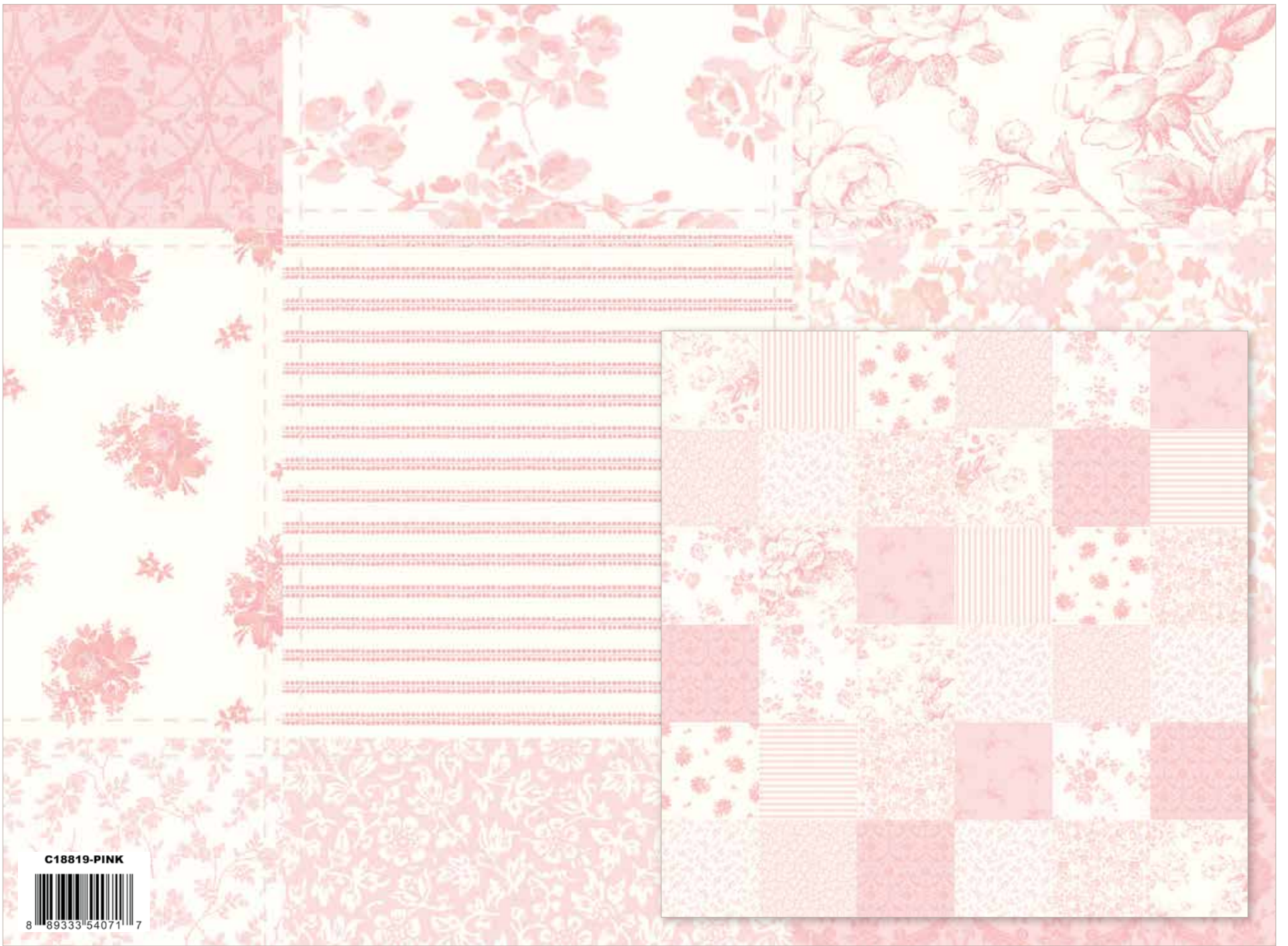


C18818-BLUE



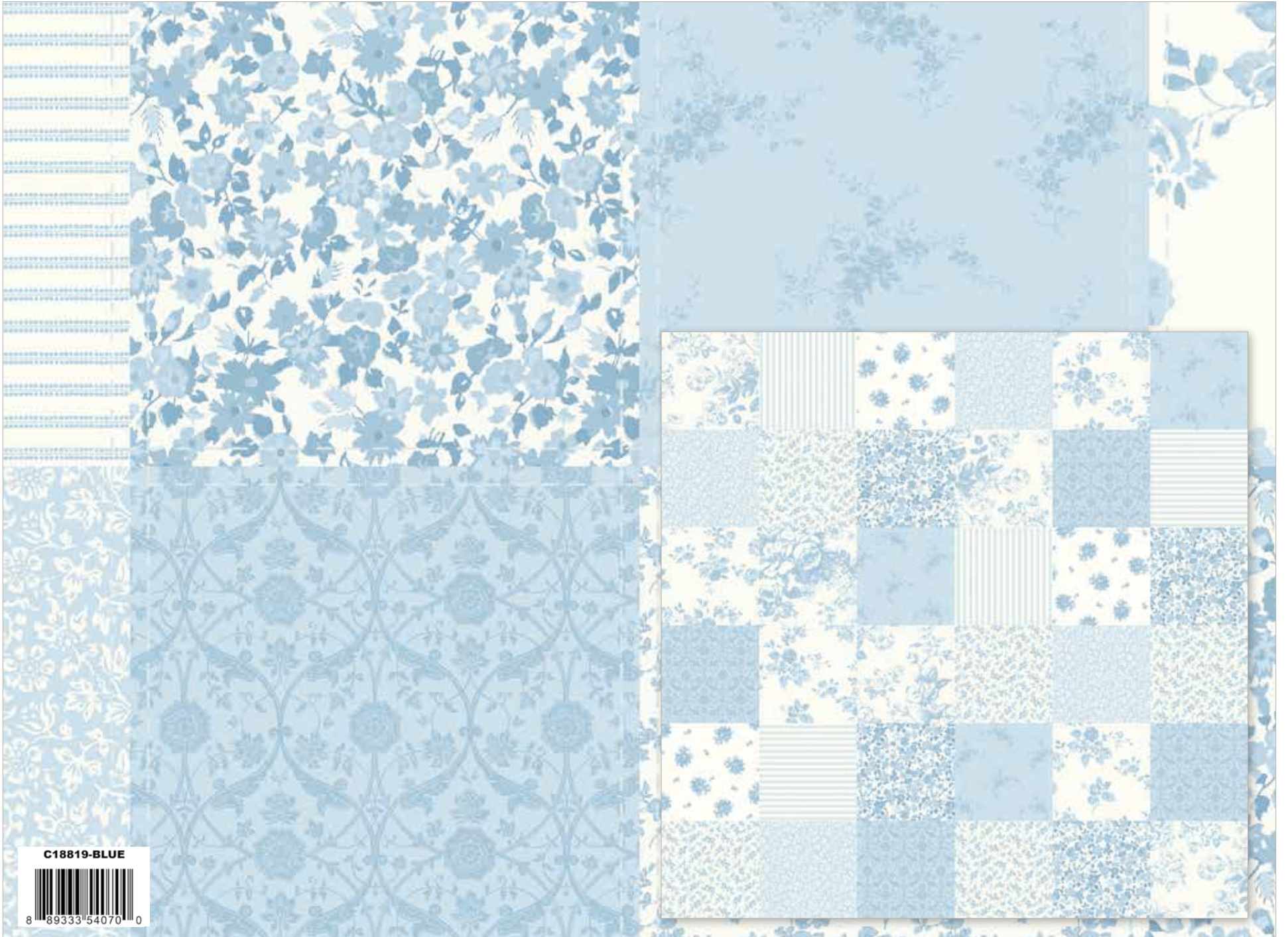
Blue Pensham Bouquets

Laura Ashley Rosewater Cottage Cheater Print



Pink Patchwork Cheater Print

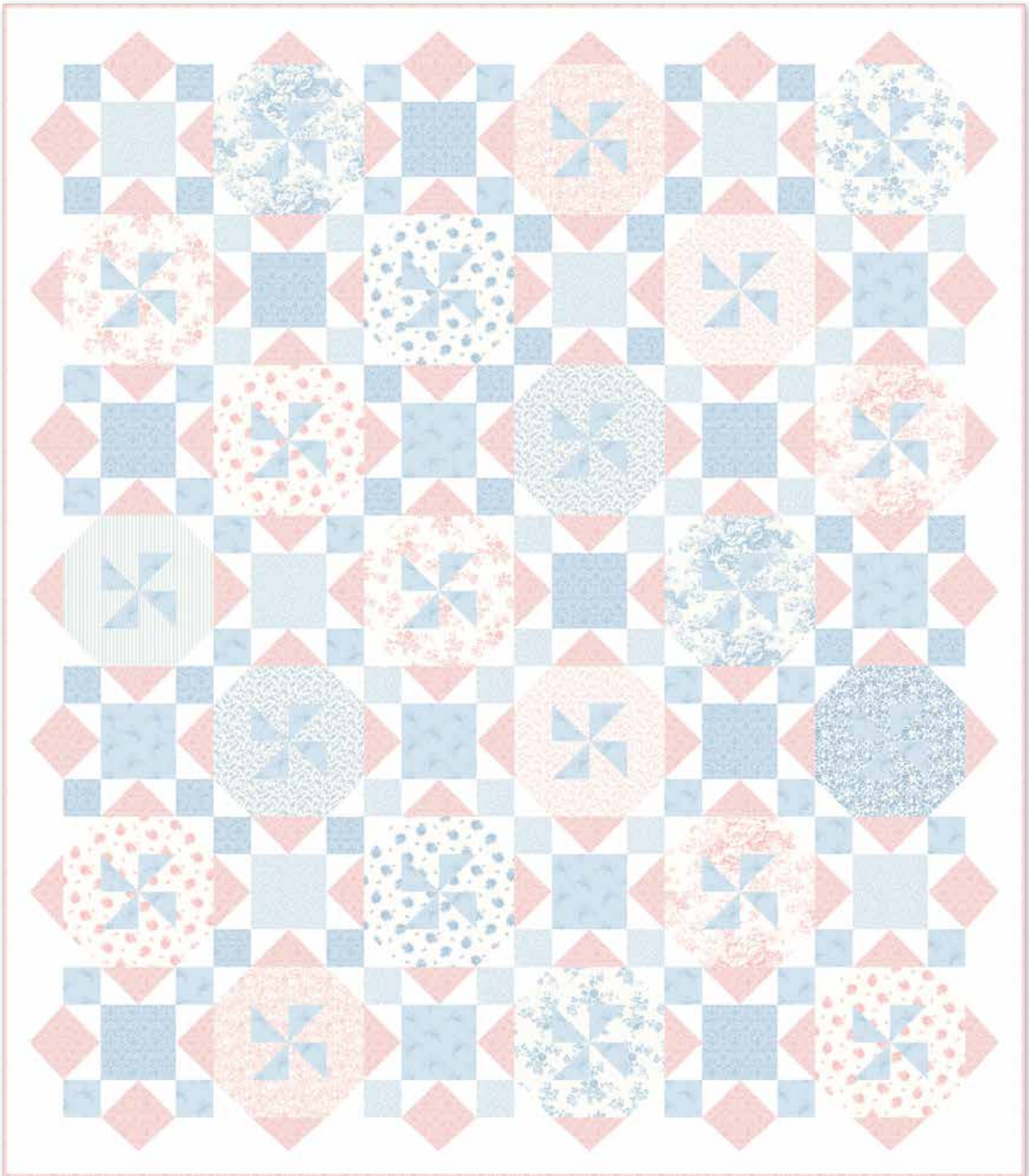
Shown as Repeat 24" x 24"



Blue Patchwork Cheater Print

Shown as Repeat 24" x 24"

Rose Trellis by **Amanda Niederhauser** of **Jedi Craft Girl**



Quilt Size 68" x 78"

estimated requirements

Fat 1/4 of Each

- C18810-BLUE Toile Delight
- C18810-PINK Toile Delight
- C18811-BLUE China Rose
- C18811-PINK China Rose
- C18813-PINK Hazelside Ditsy
- C18814-BLUE Candy Stripe
- C18814-PINK Candy Stripe
- C18816-PINK Lunham
- C18818-BLUE Pensham Bouquets
- C18818-PINK Pensham Bouquets

1/3 Yard of Each

- C18812-BLUE Endale
- C18817-BLUE Sweet Alyssum

Additional Fabrics

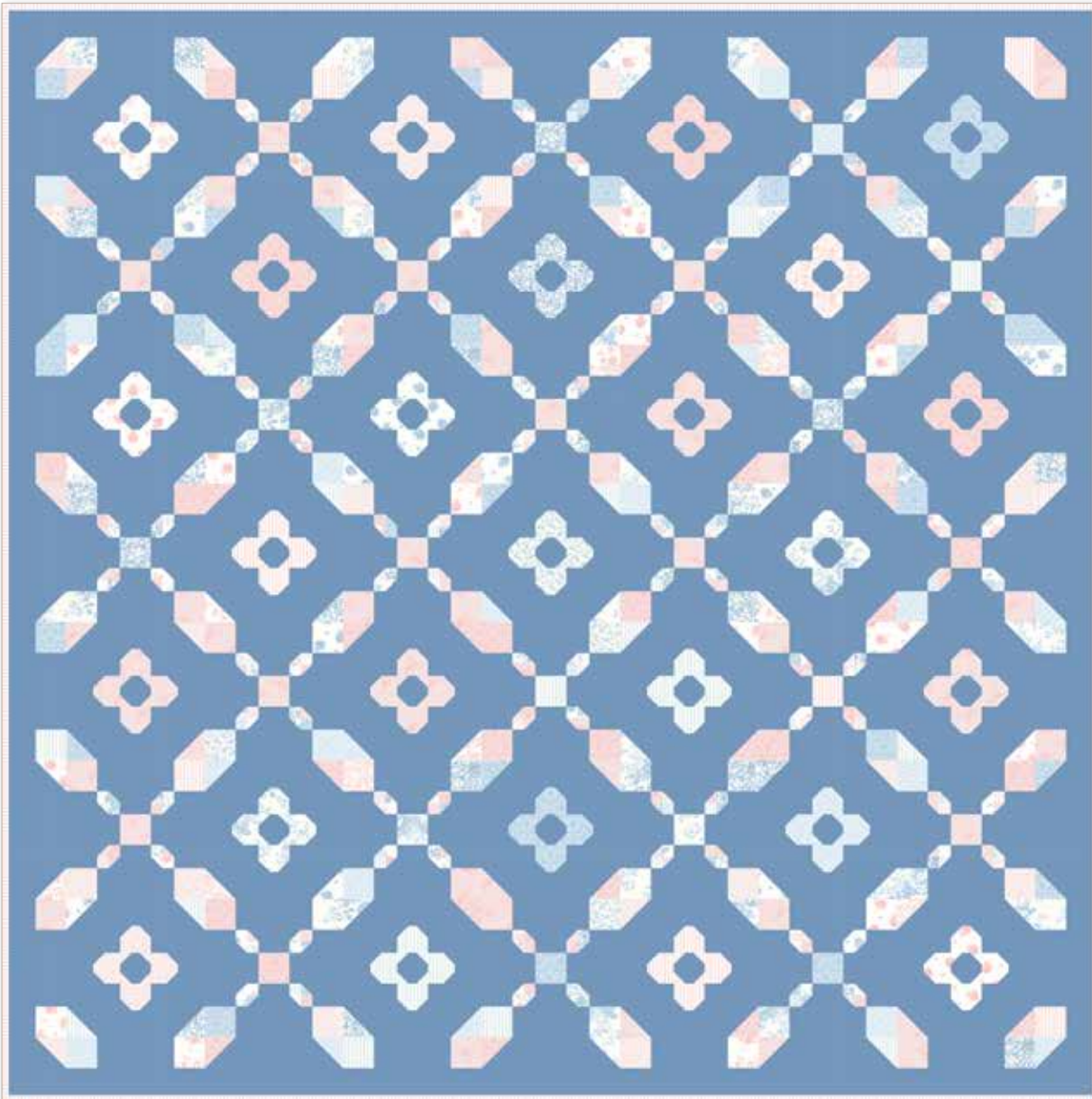
- 1 Yard C18812-PINK Endale
- 1 1/3 Yards C18815-BLUE Carleon
- 3 Yards C120-RILEYWHITE Confetti Cotton (Background)
- 2/3 Yard C18814-BLUE Candy Stripe (Binding)
- 2 1/8 Yards WB200-CHAMBRAY Shade (Backing)



Pre-order the
P156-ROSETRELLIS
Quilt Pattern



Garden Gate by My Sew Quilty Life



Quilt Size 71" x 71"

estimated requirements

(1) RP-18810-40 Rolie Polie

Additional Fabrics

4 1/2 Yards C120-DUSK Confetti Cotton
(Background)

2/3 Yard C18814-PINK Candy Stripe (Binding)

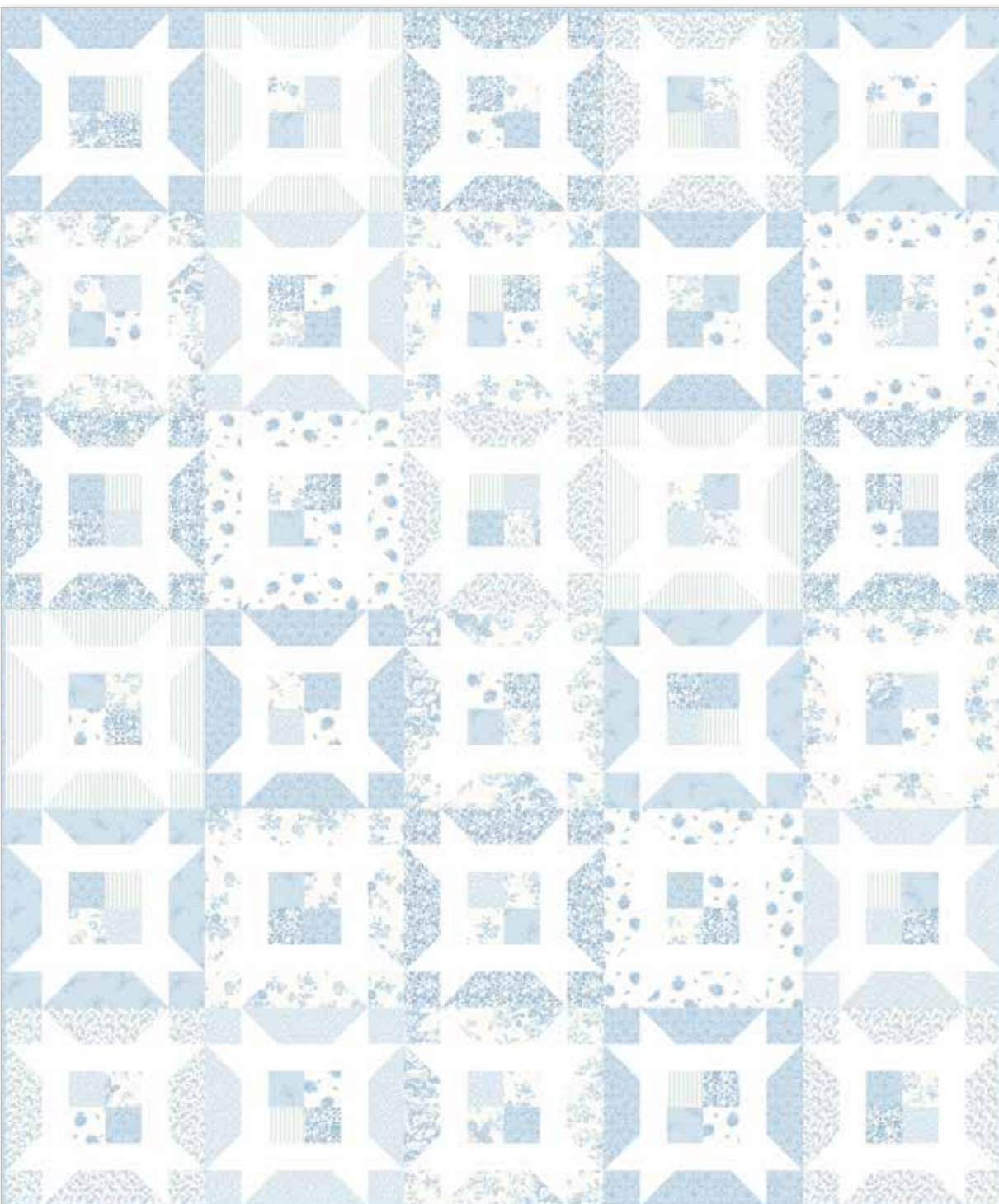
2 1/4 Yards WB640-FROSTING Dapple Dot
(Backing)



Pre-order the
P254-GARDENGATE
Quilt Pattern



Little Miss by A Bright Corner



Quilt Size 55" x 66"

estimated requirements

(1) RP-18810-40 Rolie Polie **OR**

(1) 10-18810-42 10" Stacker

Additional Fabrics

2 1/4 Yards C120-BRIGHTWHITE Confetti Cotton

2/3 Yard C18812-PINK Endale (Binding)

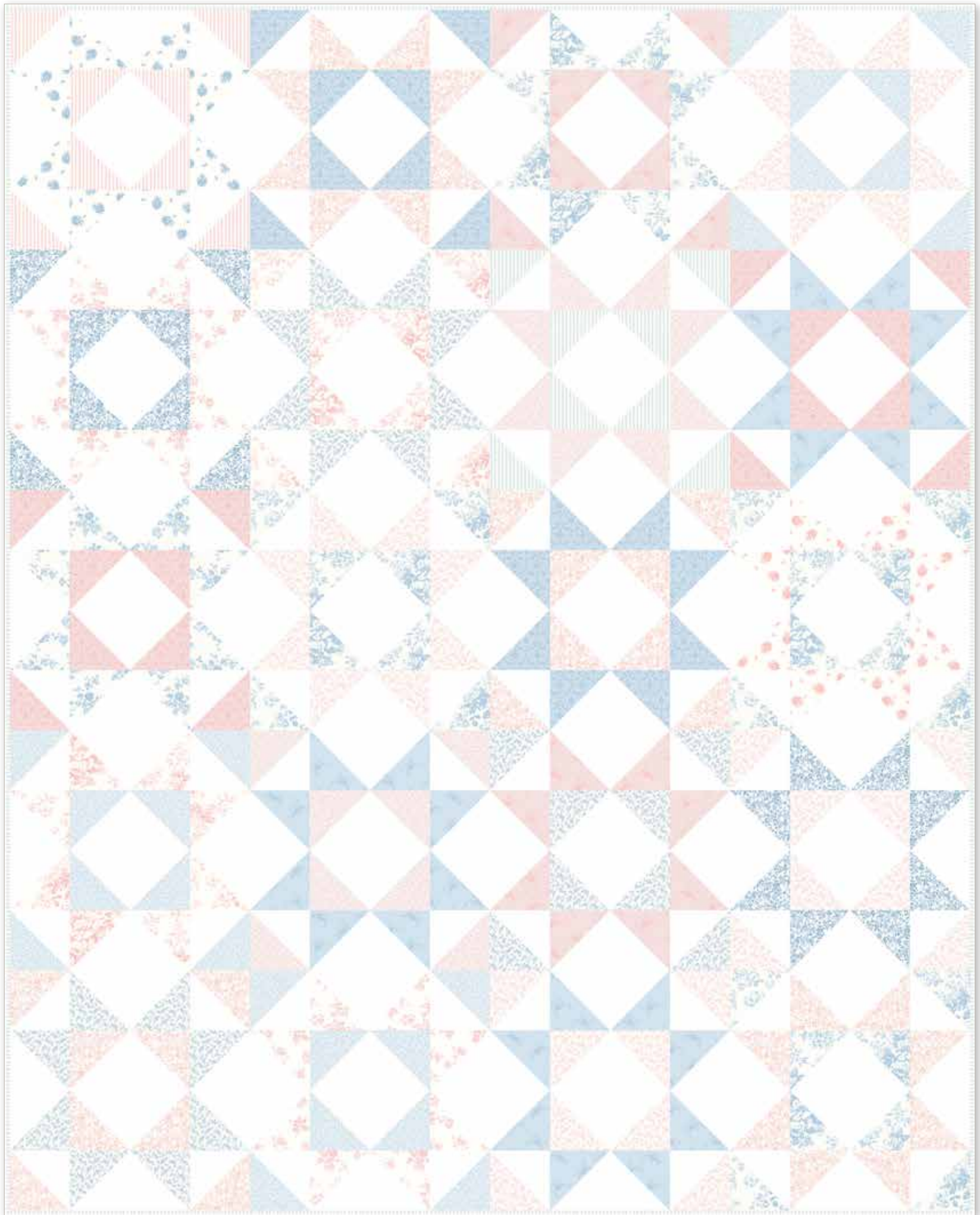
1 3/4 Yards WB200-CHAMRAY Shade (Backing)



Pre-order the
P165-LITTLEMISS
Quilt Pattern



Tango by Material Girl Quilts



Quilt Size 64" x 80"

estimated requirements

- (1) 10-18810-42 10" Stacker
- (1) 10-120-RWHITE-42 10" Stacker

Additional Fabrics

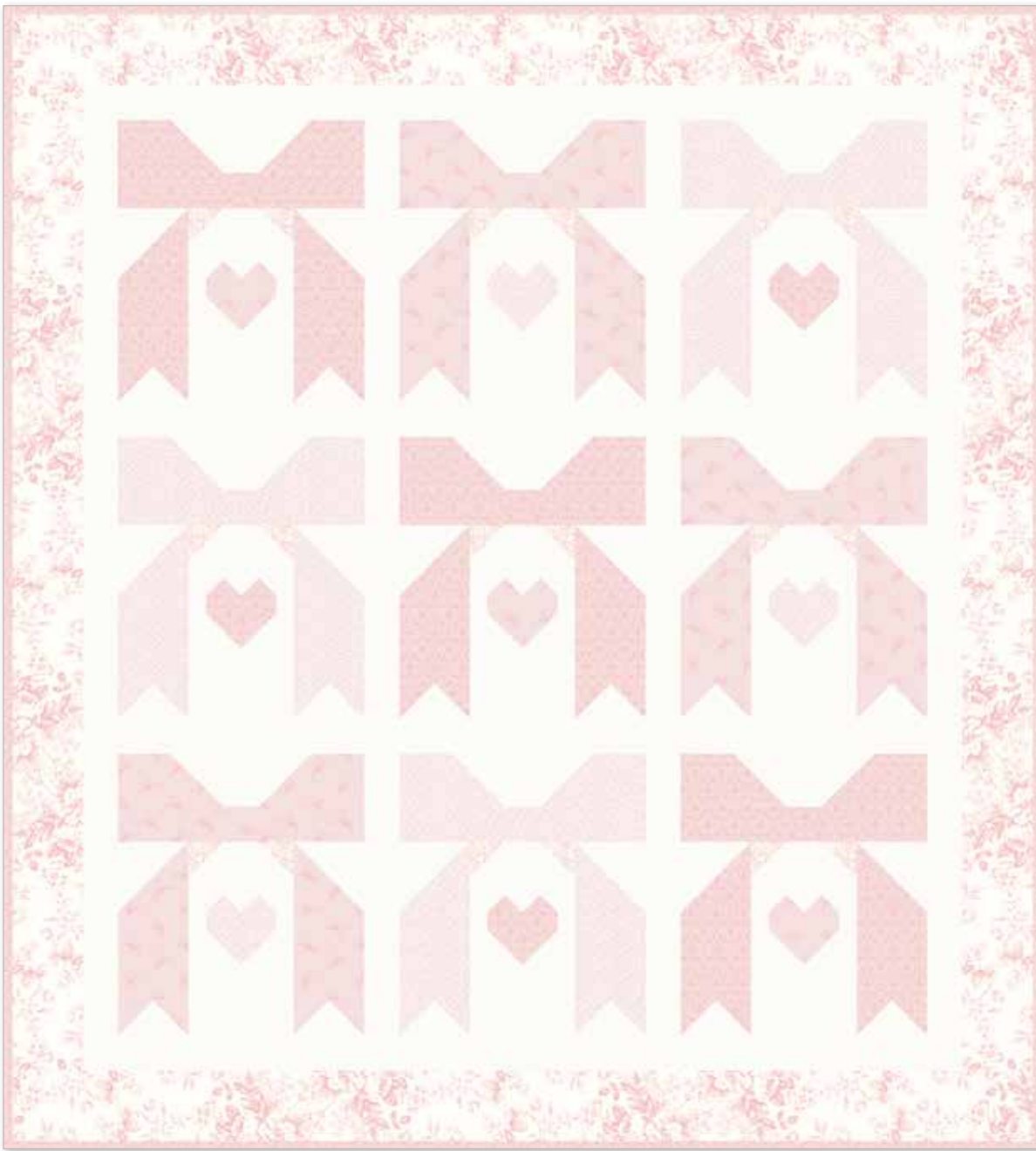
- 2/3 Yard C18814-BLUE Candy Stripe (Binding)
- 2 Yards WB200-CHAMBRAY Shade (Backing)



Pre-order the
P143-TANGO
Quilt Pattern



Satin Sashes by It's Sew Emma



Quilt Size 58½" x 64½"

estimated requirements

5/8 Yard of Each

C18815-PINK Carleon

C18817-PINK Sweet Alyssum

Additional Fabrics

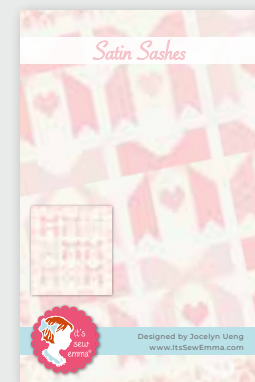
Fat 1/8 C18813-PINK Hazelside Ditsy

1 1/8 Yard C18810-PINK Toile Delight

2 5/8 Yards C120-CLOUD Confetti Cotton (Background)

1 1/4 Yards C18812-PINK Endale (Includes Binding)

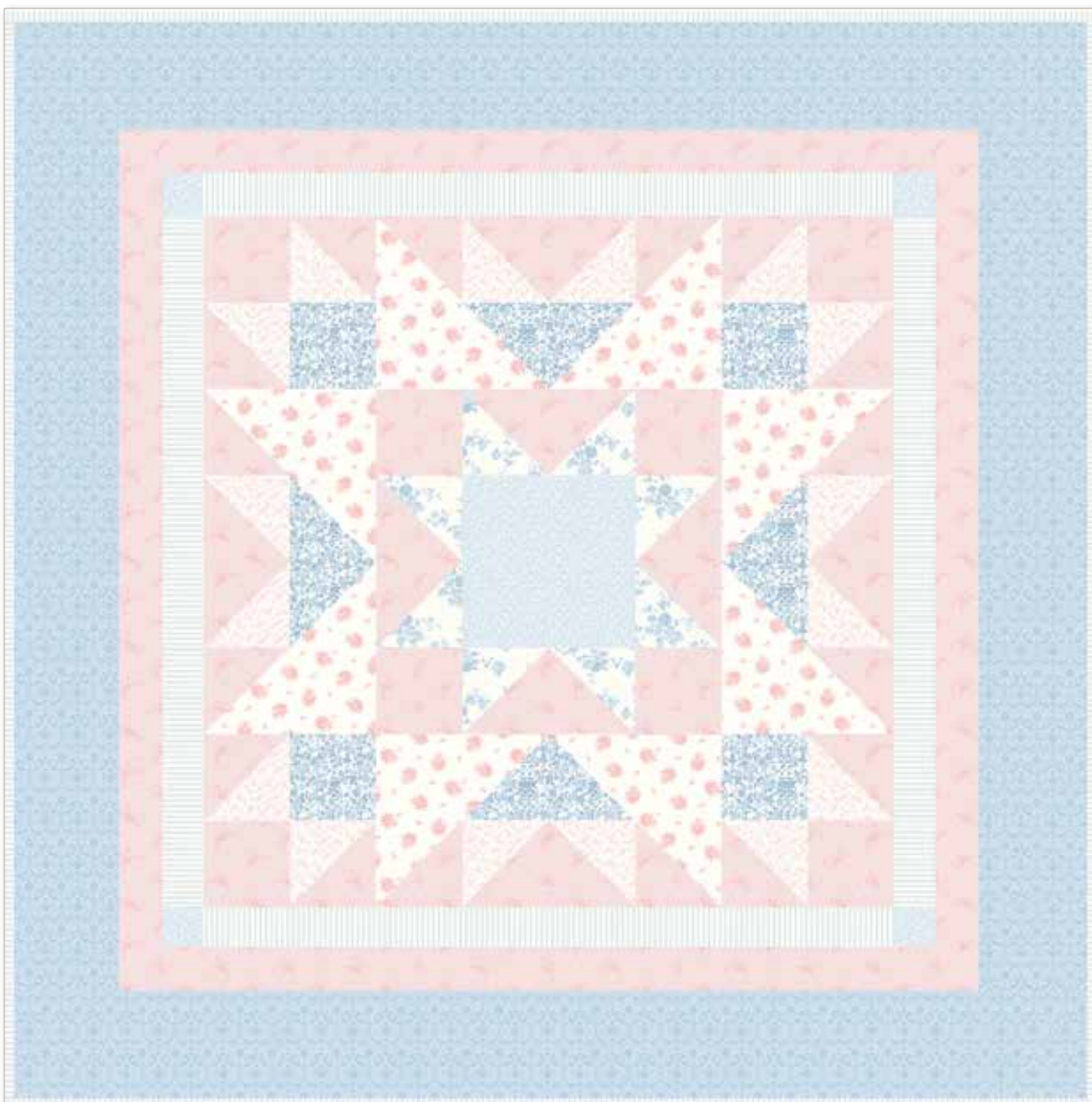
1 7/8 Yards WB640-FROSTING Dapple Dot (Backing)



Pre-order the
P051-ISE-343
Quilt Pattern



Rosy Blue Skies by The RBD Designers



Quilt Size 50" x 50"

estimated requirements

1/3 Yard of Each

C18813-BLUE Hazelside Ditsy

C18816-PINK Lunham

C18817-BLUE Sweet Alyssum

1 Yard of Each

C18812-BLUE Endale

C18815-PINK Carleon

Additional Fabrics

1/4 Yard C18811-BLUE China Rose

1/2 Yard C18818-PINK Pensham Bouquets

7/8 Yard C18814-BLUE Candy Stripe (Includes Binding)

1 3/4 Yards WB640-FROSTING Dapple Dot (Backing)

**FREE PATTERN
AVAILABLE ON OUR WEBSITE
JANUARY 2027**

www.rileyblakedesigns.com



C18810 Blue Toile Delight

Shown as Repeat 44" x 36"

Coordinating Confetti Cotton Threads



Ballerina

Peony

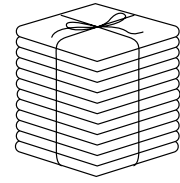
Dream

Cloud

Advanced Sample Bundle

ONLY AVAILABLE THROUGH LOCAL RBD REPS

- Pre-order only
- One per customer
- Not available on website



ASY-FQ-18810-18



ASY Fat Quarter Bundle
18 Pieces



LAURA ASHLEY

SINCE 1953

About the Brand

With over 70 years of design excellence, Laura Ashley is one of the world's best-loved home and lifestyle brands.

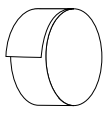
Founded on a rich design heritage and on traditional values of quality and originality, Laura Ashley offers timeless designs, signature prints and quintessentially British styles to suit every home.

lauraashleyusa.com Manufactured under license by Riley Blake Designs. ® & © 2026 Laura Ashley Brands. All rights reserved.

About the Line

Rosewater Cottage by Laura Ashley is a romantic collection filled with timeless floral prints in soft shades of pink and blue. Delicate blossoms and classic patterns come together in a palette that feels fresh, airy, and effortlessly elegant. Inspired by the charm of an English countryside cottage, Rosewater Cottage is perfect for quilts, home décor, and sewing projects that call for a gentle touch and enduring beauty.

precuts



RP-18810-40



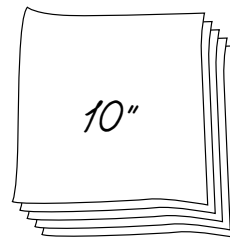
Rolie Polie
40 Pieces
(C18819 not included)



5-18810-42



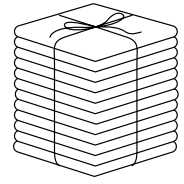
5-Inch Stacker
42 Pieces
(C18819 not included)



10-18810-42



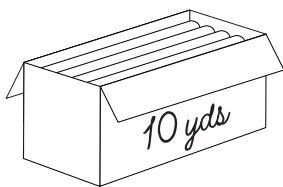
10-Inch Stacker
42 Pieces
(C18819 not included)



FQ-18810-18



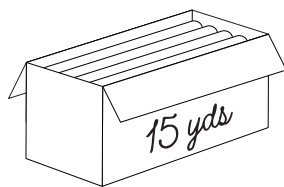
Fat Quarter Bundle
18 Pieces
(C18819 not included)



CP10-18810-20



10-Yard Case Pack



CP15-18810-20



15-Yard Case Pack



1YD-18810P-10



Pink - 1-Yard Bundle
10 Pieces



1YD-18810B-10



Blue - 1-Yard Bundle
10 Pieces

pre-order only

ADD ANY LAMINATE WITH 100 YARDS MINIMUM

Laura Ashley Rosewater Cottage
available January 2027 **last call July 1, 2026**

100% FINE COTTON · 43/44" WIDE · MADE IN KOREA



4060 W 2100 N, STE A
Lehi, UT 84048-7837
888.768.8454 · 801.816.0540
www.rileyblakedesigns.com

©2026 Riley Blake Designs

Machine Wash Cold
No Chlorine Bleach
Tumble Dry Low
Remove Promptly
Not Intended for Children's Sleepwear

The projects portrayed are virtual images. The look of the projects may differ with actual fabric.

The project virtual(s) shown may be different than the image shown on the pattern cover.

Approximate fabric requirements are listed to aid in estimating the amount of yardage to order and are subject to change.

Backing yardage is shown using the best use of fabric and may not be intended for directional fabric.